

**SS MH #6052-028**

use ss manhole 6052-028 for measurement to fire hyd. & valve  
74' East & 12'11" S to fire hyd.  
from hyd 20' South to valve

**SS MH #6052-030**

from ss manhole 6052-030 for measurement to fire hyd. & valve  
73' West & 56' South to fire hyd.  
from fire hyd. 21' West to valve

Line 1 moved 2' South  
FROM SS MANHOLE 6052-028 - 74' EAST & 32'11" SOUTH TO VALVE  
FROM SS MANHOLE 6052-028 - 74' EAST & 34'11" SOUTH TO TEE  
FROM SS MANHOLE 6052-028 - 72' EAST & 34'11" SOUTH TO ISO VALVE AND 8' WEST TO CAP  
FROM SS MANHOLE 84' EAST AND 32'11" SOUTH TO TOP 45 DEG. BEND AND 3'4" DOWN TO BOTTOM 45 DEG. BEND

SEE SHEET 5 FOR LOCATION OF FH

**AS BUILTS**

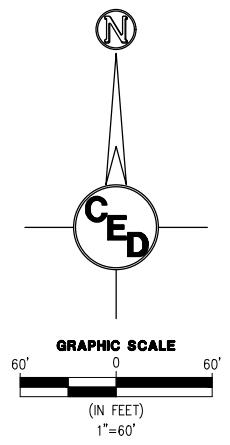
Contractor: Ewertz Excavation

Project Inspector: Larry Gann

**KEMILLER ENGINEERING PA**

117 E. Lewis, Wichita, KS 67202 (316)264-0242

REV.	DESCRIPTION	DATE



WATER IMPROVEMENTS

LA PALM PRODUCT, LLC

SW 1/4 OF THE SE 1/4 OF SECTION 29,  
TOWNSHIP 26S, RANGE 2E  
WICHITA, SEDGWICK COUNTY, KS

CERTIFIED ENGINEERING DESIGN, P.A.  
CIVIL ENGINEERING SERVICES



1935 WEST MAPLE STREET  
WICHITA, KANSAS 67213  
PH.(316)262-8808 FAX.(316)262-1669



NOTE: CONTRACTOR SHALL COMPLY WITH OSHA'S ASBESTOS STANDARD FOR ALL WORK RELATING TO THE EXISTING 20" A.C. LINE

**HORIZONTAL CONTROL**

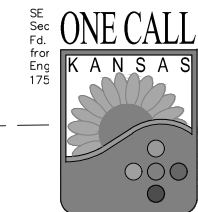
CP-1	N: 1711196.71 E: 1677882.12	1/2" IPF BAUGHMAN CAP LOCATED AT NORTHWEST PROPERTY CORNER
CP-2	N: 1711211.85 E: 1677884.94	1/2" IPF BAUGHMAN CAP LOCATED AT NORTHEAST PROPERTY CORNER
CP-3	N: 1710149.88 E: 1677897.31	1/2" CORNERSTONE SURVEYING BAR AND CAP LOCATED AT SOUTHWEST PROPERTY CORNER

**BENCHMARK**

BM-1	ELV = 1413.18 (NAVD88)	SQ. CUT ON TOP OF INLET LOCATED APPROX. 28' EAST AND 8' NORTH OF NORTHEAST PROPERTY CORNER
BM-2 <th>ELV = 1414.64 (NAVD88)</th> <th>SQ. CUT ON TOP OF INLET LOCATED APPROX. 95' WEST AND 352' SOUTH OF NORTHEAST PROP. COR.</th>	ELV = 1414.64 (NAVD88)	SQ. CUT ON TOP OF INLET LOCATED APPROX. 95' WEST AND 352' SOUTH OF NORTHEAST PROP. COR.
BM-3 <th>ELV = 1414.09 (NAVD88)</th> <th>SQ. CUT ON TOP OF INLET LOCATED APPROX. 37' WEST AND 345' SOUTH OF THE NORTHEAST PROP. COR.</th>	ELV = 1414.09 (NAVD88)	SQ. CUT ON TOP OF INLET LOCATED APPROX. 37' WEST AND 345' SOUTH OF THE NORTHEAST PROP. COR.

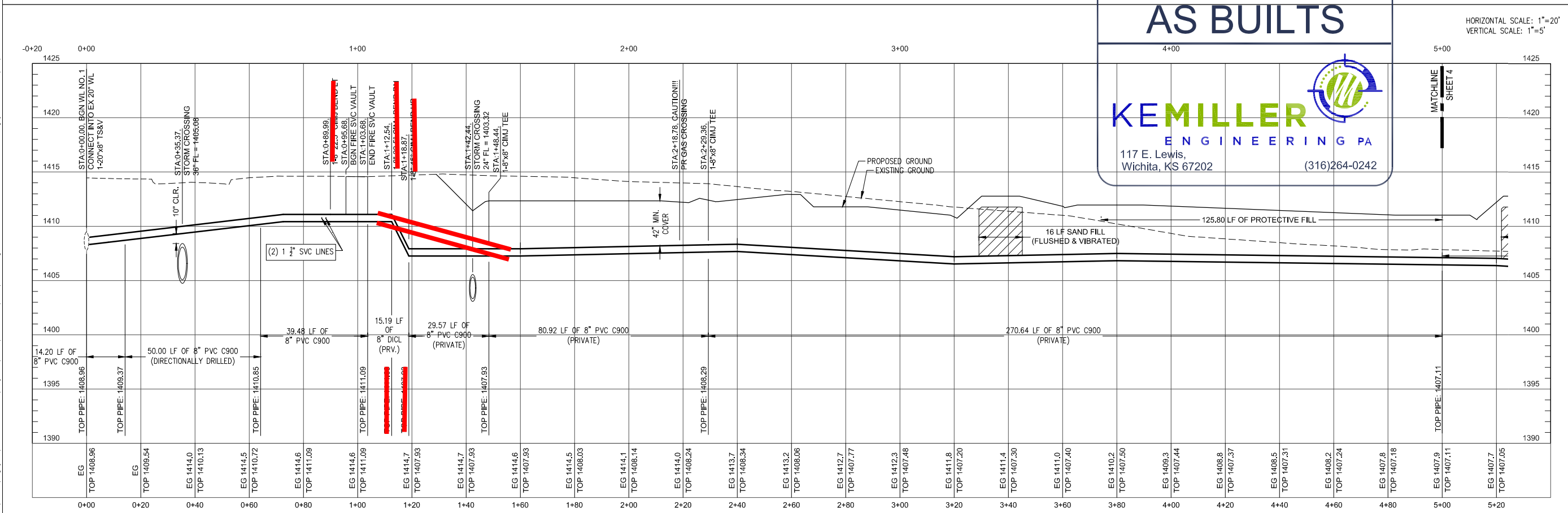
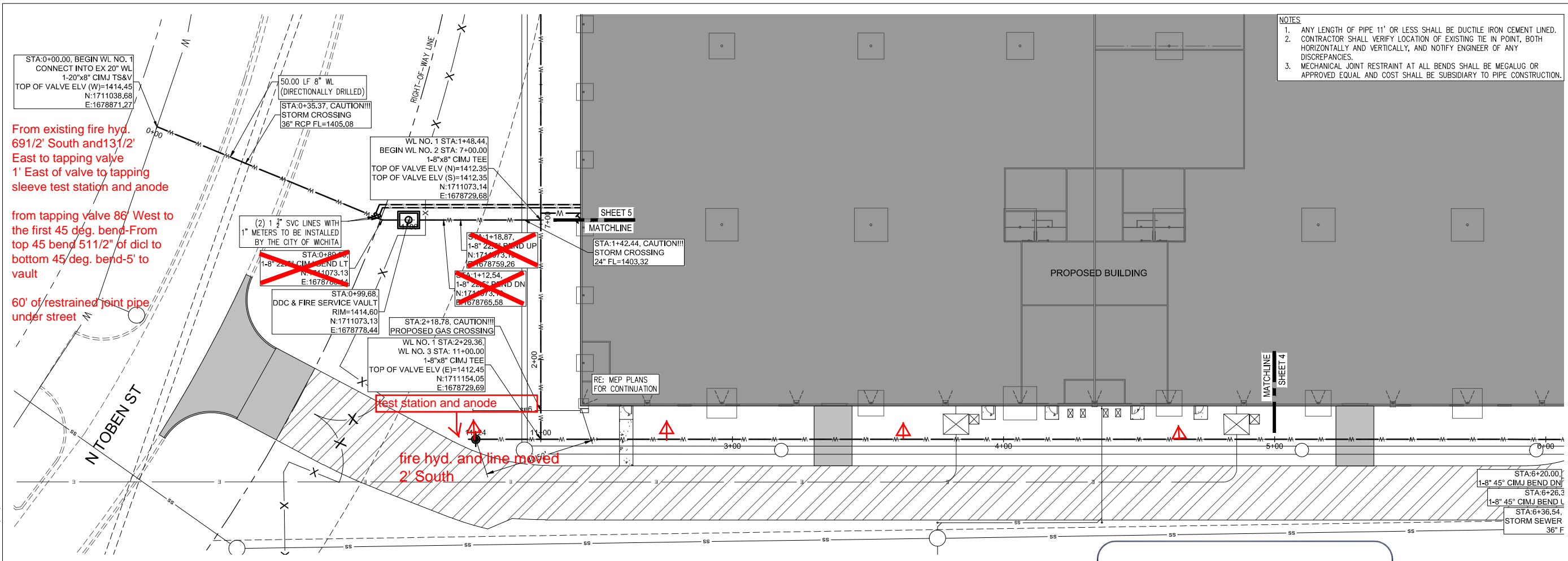
**SURVEY DISCLAIMER:**  
TOPOGRAPHIC SURVEY AND CONTOUR MAP USED WAS DEVELOPED BY GARBER SURVEYING SERVICE, PA, 2908 N PLUM ST. HUTCHINSON, KS 67502. ENGINEER DOES NOT GUARANTEE SURVEY ELEVATIONS FOR ACCURACY. CONTRACTOR SHALL VERIFY ELEVATIONS AND NOTIFY ENGINEER OF ANY DISCREPANCIES.

UTILITIES SHOWN REPRESENT THE BEST INFORMATION AVAILABLE FOR DESIGN. ADDITIONAL UTILITIES MAY BE PRESENT ON THIS PROJECT. THE CONTRACTOR SHALL BE RESPONSIBLE FOR DETERMINING THE EXACT LOCATION, DEPTH AND SIZE OF ALL UNDERGROUND UTILITIES PRIOR TO CONSTRUCTION. THE CONTRACTOR SHALL BE LIABLE FOR ANY DAMAGE CAUSED BY THE FAILURE TO DO SO.



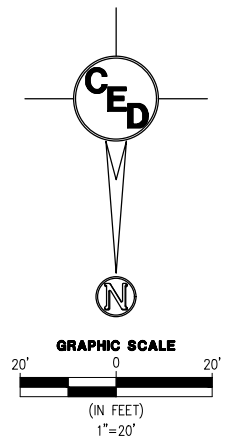
FILE LOCATION: C:\Users\nguyen\OneDrive - CED\Projects\2021\20212925\DWG\_PPW.dwg TAB NAME: Overall USER: nguyen SAVED: 6/18/2021 10:42 AM PLOTTED: 6/18/2021 10:46 AM

FILE LOCATION: C:\Users\anguyen\OneDrive - CED\Projects\2021\2925\DMG\_PPW.dwg TAB NAME: Plan Profiles 1 USER: anguyen SAVED: 6/18/2021 10:42 AM PLOTTED: 6/18/2021 10:46 AM



- NOTES
1. ANY LENGTH OF PIPE 11' OR LESS SHALL BE DUCTILE IRON CEMENT LINED.
  2. CONTRACTOR SHALL VERIFY LOCATION OF EXISTING TIE IN POINT, BOTH HORIZONTALLY AND VERTICALLY, AND NOTIFY ENGINEER OF ANY DISCREPANCIES.
  3. MECHANICAL JOINT RESTRAINT AT ALL BENDS SHALL BE MEGALUG OR APPROVED EQUAL AND COST SHALL BE SUBSIDIARY TO PIPE CONSTRUCTION.

REV.	DESCRIPTION	DATE



# AS BUILTS

117 E. Lewis,  
Wichita, KS 67202      (316)264-0242

**WATER IMPROVEMENTS**  
**LA PALM PRODUCT, LLC**  
 SW 1/4 OF THE SE 1/4 OF SECTION 29,  
 TOWNSHIP 26S, RANGE 2E  
 WICHITA, SEDGWICK COUNTY, KS

CERTIFIED ENGINEERING DESIGN, P.A.  
 CIVIL ENGINEERING SERVICES



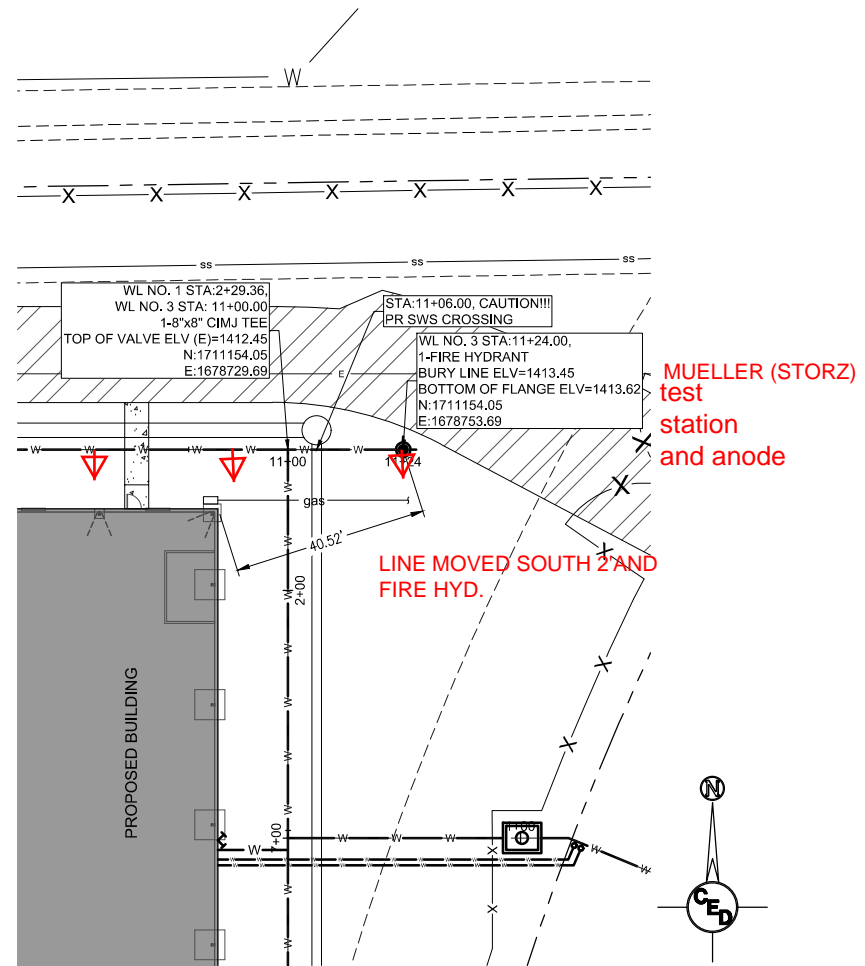
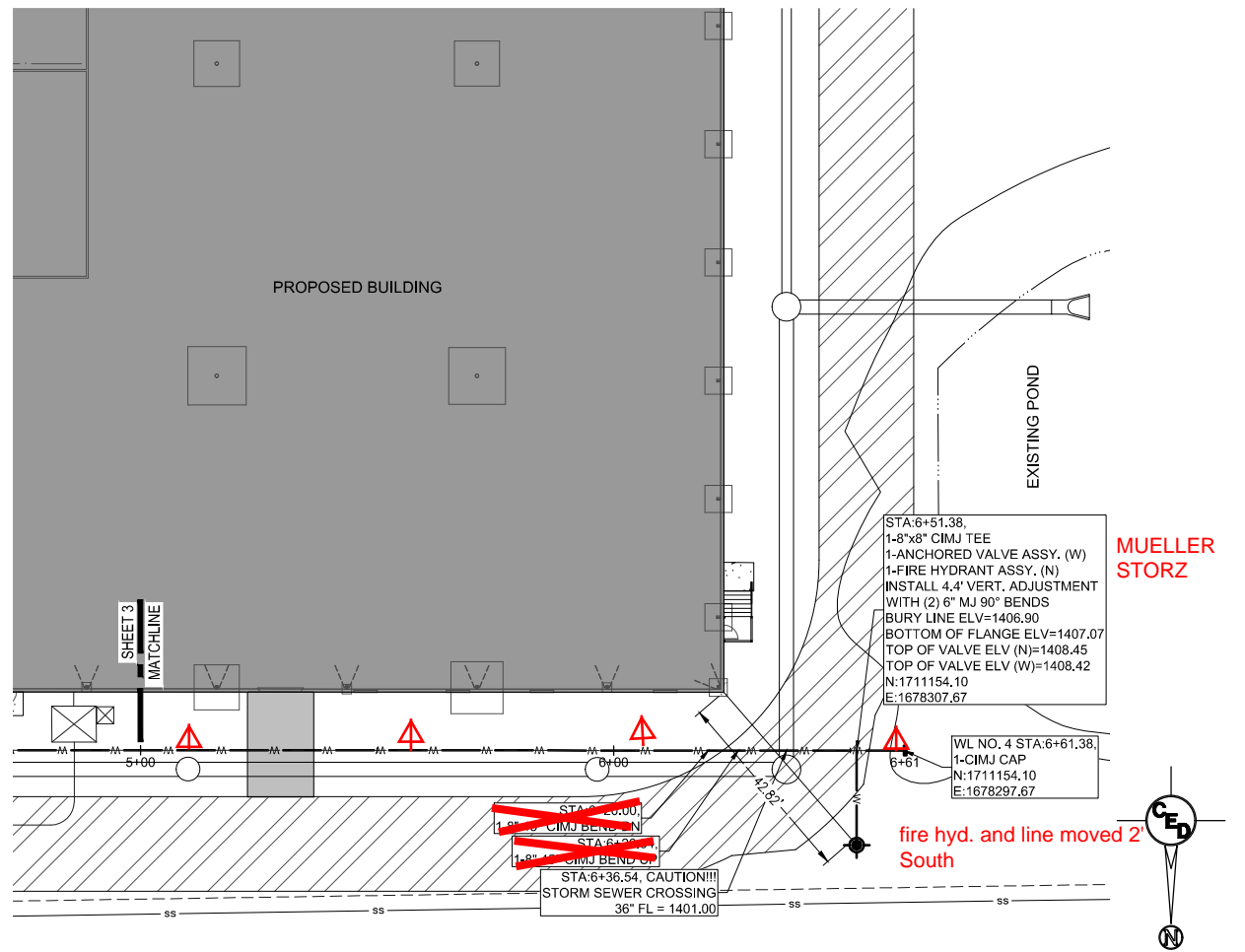
1935 WEST MAPLE STREET  
 WICHITA, KANSAS 67213  
 PH.(316)262-8808 FAX.(316)262-1669



PROJECT NO.: 20212925  
 ISSUE DATE: 06/18/21  
 CONTACT: L. MILLS / H. FORAKER  
 CHECKED BY: L. MILLS / H. FORAKER

**PLAN & PROFILE 1**

FILE LOCATION: C:\Users\anguyen\OneDrive - CED\Projects\2021\2925\DWG\PPW.dwg TAB NAME: Plan Profile 2 USER: anguyen SAVED: 6/18/2021 10:46 AM PLOTTED: 6/18/2021 10:46 AM



- NOTES
1. ANY LENGTH OF PIPE 11' OR LESS SHALL BE DUCTILE IRON CEMENT LINED.
  2. CONTRACTOR SHALL VERIFY LOCATION OF EXISTING TIE IN POINT, BOTH HORIZONTALLY AND VERTICALLY, AND NOTIFY ENGINEER OF ANY DISCREPANCIES.
  3. MECHANICAL JOINT RESTRAINT AT ALL BENDS SHALL BE MEGALUG OR APPROVED EQUAL AND COST SHALL BE SUBSIDIARY TO PIPE CONSTRUCTION.

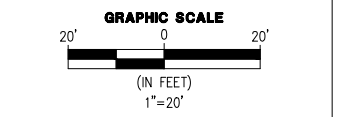
**AS BUILTS**

**KEMILLER**  
ENGINEERING PA

117 E. Lewis,  
Wichita, KS 67202

(316)264-0242

REV.	DESCRIPTION	DATE



SFF PAGE 4

WATER IMPROVEMENTS  
LA PALM PRODUCT, LLC

SW 1/4 OF THE SE 1/4 OF SECTION 29,  
TOWNSHIP 26S, RANGE 2E  
WICHITA, SEDGWICK COUNTY, KS

CERTIFIED ENGINEERING DESIGN, P.A.  
CIVIL ENGINEERING SERVICES



1935 WEST MAPLE STREET  
WICHITA, KANSAS 67213  
PH.(316)262-8808 FAX.(316)262-1669



PROJECT NO.: 20212925  
ISSUE DATE: 06/18/21  
CONTACT: L. MILLS / H. FORAKER  
CHECKED BY: L. MILLS / H. FORAKER

**PLAN & PROFILE 2**

