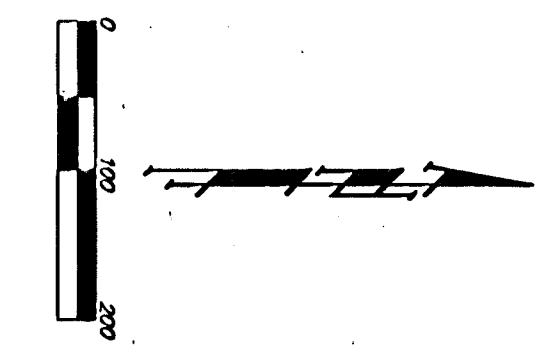
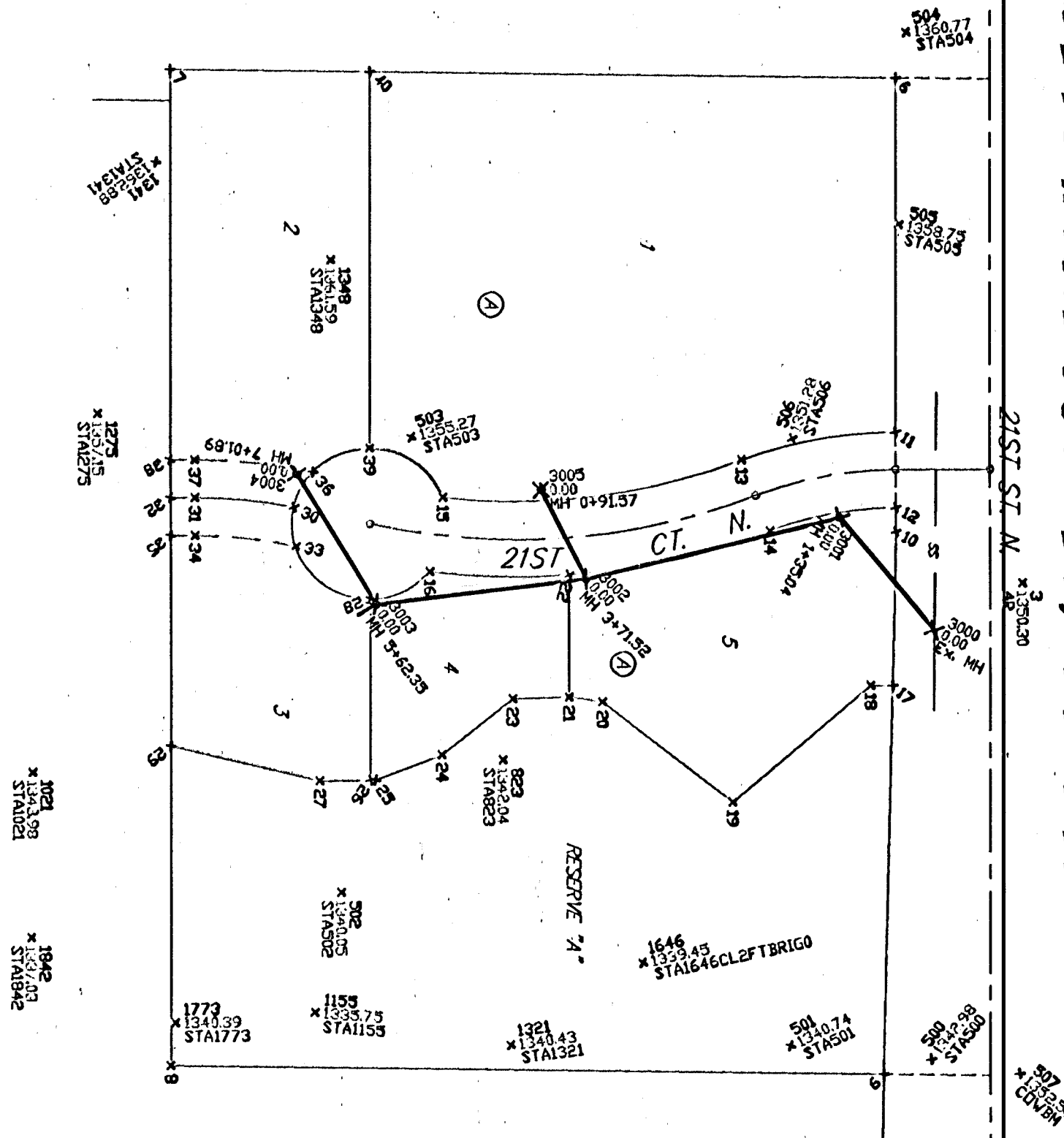



EBERLY FARM OFFICE PARK SEDGWICK COUNTY, KANSAS



Sheet 7 of 8

PT	NORTH	EAST	ELEV	DESC	PT	NORTH	EAST	ELEV	DESC
1	5000.0000	5000.0000	0.0000	SEC008	3000	4948.5217	3916.9714	0.0000	EX MH
2	5000.0000	2406.3300	0.0000	SEC028	3001	4863.9141	3712.5380	0.0000	MH 1-A-33.04
3	5028.9070	3773.3800	1300.3000	4R	3002	4634.3936	3769.4914	0.0000	MH 3-A-7.52
4	4955.2300	2391.1100	0.0000	NAL	3003	4443.0000	3792.6375	0.0000	MH 5-A-62.35
5	2389.3100	2372.2100	0.0000	SEC028	3004	4274.0884	3872.6473	0.0000	MH 1-A-01.29
6	4261.0000	3099.8632	0.0000		3005	4394.9338	3897.1080	0.0000	MH 0-91.37
7	4260.0000	4219.9408	0.0000						
8	4901.5902	4228.1631	0.0000						
9	4915.0000	3725.5300	0.0000						
10	4915.0000	4228.1631	0.0000						
11	4915.0000	3711.9177	0.0000						
12	4915.0000	3711.9177	0.0000						
13	4723.0000	3725.5300	0.0000						
14	4723.0000	3725.5300	0.0000						
15	4595.6902	3861.7244	0.0000						
16	4461.7777	3762.8003	0.0000						
17	4911.2599	3862.2668	0.0000						
18	4897.7542	3862.2668	0.0000						
19	4767.1963	3976.4997	0.0000						
20	4649.5513	3833.6922	0.0000						
21	4649.5513	3833.6922	0.0000						
22	4619.3038	3765.2710	0.0000						
23	4562.2909	3890.7589	0.0000						
24	4594.6269	3832.2773	0.0000						
25	4444.5064	3855.9169	0.0000						
26	4440.0000	3855.9169	0.0000						
27	4394.9685	3826.0283	0.0000						
28	4394.9685	3826.0283	0.0000						
29	4390.0000	3894.1025	0.0000						
30	4271.6800	3762.7542	0.0000						
31	4282.0669	3861.7275	0.0000						
32	4280.0000	3861.7275	0.0000						
33	4371.1620	3728.6634	0.0000						
34	4282.0669	3728.6634	0.0000						
35	4386.5211	3728.6634	0.0000						
36	4386.5211	3728.6634	0.0000						
37	4282.0669	3858.7575	0.0000						
38	4280.0000	3847.8983	0.0000						
39	4440.0000	3847.8983	0.0000						
40	4440.0000	3302.1634	0.0000						
41	4946.3902	4274.3910	1342.9946	STAB00					
42	4915.0000	4228.1631	1340.0000	STAB01					
43	4915.0000	4228.1631	1340.0000	STAB02					
44	4472.6919	3832.6692	1363.2895	STAB03					
45	4924.2799	3863.6929	1390.7699	STAB04					
46	4916.0572	3442.9711	1358.7462	STAB05					
47	4921.6238	3638.4985	1351.2788	STAB06					
48	5028.4177	4227.7383	1352.0713	CONVM					
49	4933.5378	3827.1125	1343.0713	STAB07					
50	4933.5378	3827.1125	1343.0713	STAB08					
51	4399.9404	4171.2414	1335.2516	STAB09					
52	4399.9404	4171.2414	1335.2516	STAB10					
53	4194.8905	3875.4890	1357.1454	STAB11					
54	4566.5900	4201.1198	1340.4290	STAB12					
55	4247.0633	3305.1025	1362.8798	STAB13					
56	4247.0633	3305.1025	1362.8798	STAB14					
57	4404.9707	3473.2393	1291.3000	STAB15					
58	4683.5879	4174.6190	1339.4831	STAB16					
59	4683.5879	4174.6190	1339.4831	STAB17					
60	4294.1244	4180.5779	1340.3899	STAB18					
61	4294.1244	4180.5779	1340.3899	STAB19					
62	4124.1015	4107.4389	1317.0270	STAB20					


Boughman Engineering, P.A.
 Surveyors & Engineers
 1000 West 10th Street, Suite 100
 Topeka, Kansas 66604