

PLOTTED: Wednesday, August 31, 2022 @ 10:33AM
J:\CML\042941\0305-CIVIL\CAD\WTR11TH_ADDITION\042941-0305-3000-11.DWG

GENERAL NOTES

- THE CONTRACTOR SHALL COMPLY WITH ALL APPLICABLE SAFETY REGULATIONS. ALL CONSTRUCTION SHALL BE COMPLETED FOLLOWING CURRENT CITY STANDARD SPECIFICATIONS AND SPECIAL PROVISIONS.
- CONTRACTOR WILL BE REQUIRED TO PROVIDE NOTICE TO UTILITY COMPANIES A MINIMUM OF SEVENTY-TWO (72) HOURS PRIOR TO ANY EXCAVATION, AS FOLLOWS:
KANSAS ONE-CALL 687-2470
THE CONTRACTOR MUST NOTIFY THE FOLLOWING IN CASE OF AN EMERGENCY:
AT&T 1-800-246-8464
BLACK HILLS ENERGY (GAS) 1-800-694-8989
CITY OF WICHITA WATER & SEWER 1-316-219-8921
CITY OF WICHITA STORMWATER 1-316-268-4090
CITY OF WICHITA TRAFFIC 1-316-268-4034
COX COMMUNICATIONS 1-888-249-3530
KANSAS GAS SERVICE 1-888-462-4950
EVERGY 1-800-544-4857
- UTILITY SERVICE LINES, POLES, ETC. ARE TO BE ADJUSTED AS NECESSARY BY OTHERS PRIOR TO CONSTRUCTION UNLESS THE PLANS SPECIFICALLY CALL FOR THEIR ADJUSTMENT BY THE CONTRACTOR OR UNLESS THE PLANS SPECIFICALLY IDENTIFY A UTILITY TO BE ADJUSTED BY ITS OWNER DURING CONSTRUCTION. EXISTING UTILITIES AND THEIR LOCATION, AS SHOWN ON THE PLANS, REPRESENT THE BEST INFORMATION OBTAINABLE FOR DESIGN. THE CONTRACTOR WILL BE REQUIRED TO WORK AROUND EXISTING UTILITIES WITHIN THE RIGHT-OF-WAY WHICH DO NOT CONFLICT WITH PROPOSED CONSTRUCTION.
- RUBBLE FROM THE REMOVAL OF MISCELLANEOUS STRUCTURES AND EXCESS EXCAVATION WHICH IS TO BE WASTED SHALL BE DISPOSED OF ON SITES TO BE PROVIDED BY THE CONTRACTOR. THESE SITES SHALL BE APPROVED BY THE ENGINEER AS TO SUITABILITY, APPEARANCE AND SITE LOCATION. LOCATIONS, IN THE OPINION OF THE ENGINEER, THAT WILL LEAVE AN UNSIGHTLY APPEARANCE WILL NOT BE APPROVED. ALL DISPOSAL SITES MUST BE APPROVED BY THE KANSAS DEPARTMENT OF HEALTH AND ENVIRONMENT. MATERIAL EITHER STOCKPILED OR DISPOSED OF IN A FLOOD PLAIN WILL REQUIRE A KANSAS STATE BOARD OF AGRICULTURE PERMIT. ANY MATERIAL DUMPED IN WATERS OF THE UNITED STATES OR WETLANDS IS SUBJECT TO U.S. CORPS OF ENGINEERS PERMITTING REGULATIONS. ANY MATERIAL BURIED OR STOCKPILED BEYOND APPROVED CONSTRUCTION LIMITS WILL REQUIRE ADDITIONAL ARCHAEOLOGICAL INVESTIGATIONS UNLESS BURIED IN A PREVIOUSLY APPROVED BORROW LOCATION.
- TREES AND SHRUBS IN PUBLIC RIGHT-OF-WAY WHICH ARE IN DIRECT CONFLICT WITH PROPOSED NEW CONSTRUCTION SHALL BE REMOVED BY THE CONTRACTOR WITH THE CITY ENGINEER'S APPROVAL. TREES AND SHRUBS WHICH ARE NOT IN DIRECT CONFLICT WITH PROPOSED NEW CONSTRUCTION SHALL BE SAVED AND PROTECTED FROM DAMAGE.
- THE CONTRACTOR SHALL GIVE ALL PROPERTY OWNERS AND/OR TENANTS OF DEVELOPED PROPERTY ABUTTING THE CONSTRUCTION OF THIS PROJECT A MINIMUM OF TEN (10) DAYS NOTICE PRIOR TO START OF CONSTRUCTION.
- THE CONTRACTOR SHALL BE RESPONSIBLE FOR PRESERVING PROPERTY IRONS. THE CONTRACTOR WILL BE REQUIRED TO RE-ESTABLISH ANY PROPERTY IRONS WHICH ARE DAMAGED OR DESTROYED BY HIS CONSTRUCTION OPERATIONS. SUCH IRONS SHALL BE RE-ESTABLISHED BY A LICENSED LAND SURVEYOR IN ACCORDANCE WITH STATE LAWS.
- THE ENGINEERING DIVISION SHALL FIELD LOCATE WATER VALVES ONE TIME DURING CONSTRUCTION WHEN REQUESTED BY THE CONTRACTOR. IT SHALL BE THE CONTRACTOR'S RESPONSIBILITY TO PRESERVE SUCH FIELD LOCATIONS DURING THE CONSTRUCTION PROCESS. WATER VALVES, VALVE BOXES OR FIRE HYDRANTS DAMAGED DURING CONSTRUCTION SHALL BE REPAIRED BY CONTRACTOR AT HIS OWN EXPENSE. VALVE BOXES AND WATER METERS WITHIN THE PROJECT LIMITS SHALL BE ADJUSTED TO MATCH FIELD GRADES BY THE CONTRACTOR.
- THE CONTRACTOR SHALL NOTIFY THE INSPECTING ENGINEER AND DAWNITA REINHARDT AT 650-0740 WITH THE CITY OF WICHITA WITH THE ANTICIPATED CONSTRUCTION START DATE AND NOTIFY THEM OF PROJECT COMPLETION. STAKING AND INSPECTION FOR THIS PROJECT WILL BE THE RESPONSIBILITY OF THE CONTRACTOR.
- IF TRAFFIC WILL BE IMPACTED BY CONSTRUCTION, A TRAFFIC CONTROL PLAN MUST BE SUBMITTED AND APPROVED BY THE CITY TRAFFIC ENGINEER, MIKE ARMOUR AT traffic@wichita.gov BEFORE CONSTRUCTION CAN BEGIN. THE CONTRACTOR SHALL BE RESPONSIBLE FOR ALL TRAFFIC CONTROL MEASURES TO FACILITATE CONSTRUCTION. ALL CONSTRUCTION ZONE MARKINGS AND SIGNAGE SHALL CONFORM TO THE LATEST VERSION OF THE MANUAL ON UNIFORM TRAFFIC CONTROL DEVICES (MUTCD) AS PUBLISHED BY THE U.S. DEPT. OF TRANSPORTATION, FEDERAL HIGHWAY ADMINISTRATION. ALL COSTS ASSOCIATED WITH CONSTRUCTION MARKINGS AND SIGNAGE SHALL BE THE CONTRACTOR'S RESPONSIBILITY.
- ALL ELEVATIONS SHOWN ARE NAVD 88.
- ALL AREAS DISTURBED DURING CONSTRUCTION THAT WILL NOT BE UNDER PROPOSED PAVEMENT SHALL BE RESTORED TO MATCH EXISTING CONDITIONS.
- ANY SIDEWALK, DRIVE APPROACH, CURB, OR STREET PAVEMENT REMOVED TO CONSTRUCT PROJECT MUST HAVE A PAVEMENT CUT PERMIT AND BE REPLACED BY CITY CONTRACTOR. PERMITS CAN BE OBTAINED BY CALLING 316-268-4501 OR 316-268-4480.
- ALL APPLICABLE FEES (TAP, EQUITY, IN LIEU OF & MAIN BENEFIT) MUST BE PAID BEFORE ANY CONNECTIONS CAN BE MADE ON THIS PROJECT. QUOTES CAN BE OBTAINED ON FEES BY CALLING 316-268-4555.
- CITY MAINTENANCE OF WATER MAINS ENDS AT RIGHT-OF-WAY OR EASEMENT LINE OR WITHIN TWO FEET OF VAULT.
- MAINTAIN A MINIMUM OF 10-FOOT HORIZONTAL SEPARATION BETWEEN ALL WATER LINES (MAINS, SERVICES, AND FIRE HYDRANTS) AND ALL SANITARY SEWER LINES (MAINS, SERVICES, AND MANHOLES) AT CROSSINGS. ALL SEPARATION DISTANCES ARE TO BE MEASURED FROM EDGE-TO-EDGE, AT THE CLOSEST POINT.
- MAINTAIN A MINIMUM OF 2-FOOT VERTICAL SEPARATION BETWEEN ALL WATER LINES (MAINS AND SERVICES) AND ALL GRAVITY SANITARY SEWER LINES (MAINS, SERVICES, AND MANHOLES) AT CROSSINGS. ALL SEPARATION DISTANCES ARE TO BE MEASURED FROM EDGE-TO-EDGE, AT THE CLOSEST POINT.
- MAINTAIN A MINIMUM OF 2-FOOT VERTICAL SEPARATION BETWEEN ALL WATER LINES (MAINS AND SERVICES) AND ALL PRESSURIZED SANITARY SEWER LINES (FORCE MAINS AND SERVICES) AT CROSSINGS. WATERLINES MUST ALWAYS BE PLACED ABOVE PRESSURIZED SANITARY SEWER LINES WHERE THEY CROSS. ALL SEPARATION DISTANCES ARE TO BE MEASURED FROM EDGE-TO-EDGE, AT THE CLOSEST POINT.
- CONTRACTOR SHALL LIMIT THE EXTENT OF TRENCH OPEN OVERNIGHT AND WEEKENDS TO LESS THAN 50 FEET.
- EXISTING UTILITIES AND THEIR LOCATION, AS SHOWN ON THE PLANS REPRESENT THE BEST INFORMATION OBTAINABLE FOR DESIGN. LOCATION INFORMATION HAS BEEN OBTAINED FROM THE VARIOUS COMPANIES AND IS EITHER FROM COMPANY UTILITY DRAWINGS OR COMPANY PROVIDED FIELD LOCATIONS. THE PLAN LOCATIONS SHOWN ARE NOT GUARANTEED. ADDITIONAL EXISTING UTILITIES MAY ALSO BE ENCOUNTERED.
- OPENINGS AND CLOSING OF WATER VALVES SHALL BE DONE SLOWLY TO PREVENT DAMAGE TO THE WATER DISTRIBUTIONS SYSTEM FROM WATER HAMMER. ALL VALVES CLOSED BY THE CONTRACTOR MUST BE REOPENED AS NEW CONSTRUCTION PERMITS. THE PROJECT INSPECTOR MUST ASCERTAIN THAT ANY VALVE CLOSED BY THE CONTRACTOR IS REOPENED. THE CONTRACTOR WILL BE PERMITTED TO OPERATE WATER VALVES ONLY WHEN THE PROJECT INSPECTOR ASSIGNED TO THE PROJECT IS PRESENT.
- THE CONTRACTOR SHALL LAY A TRACER WIRE AND SET TEST STATIONS ALONG ALL WATER PIPE INSTALLED IN ACCORDANCE WITH CITY SPECIFICATIONS AND TRACER WIRE DETAIL ON DETAIL SHEET WL-101, COST IS SUBSIDIARY TO PIPE INSTALLATION.
- THE CONTRACTOR SHALL PROVIDE MATERIALS FOR TEMPORARY BLOWOFF OF WATERLINES. CONNECTIONS TO THE EXISTING WATERLINE(S) SHALL BE MADE WITH CLEAN, SWABBED PIPE AND FLUSHED UPON COMPLETION OF TIE-INS.
- REQUESTS FOR SHORT TERM WATER INTERRUPTIONS SHALL BE MADE TO THE CITY WATER DISTRIBUTION DIVISION AND WILL BE SUBJECT TO THEIR APPROVAL. THE CONTRACTOR SHALL GIVE WRITTEN NOTICE TO ANY PROPERTY OWNER, BUSINESS, AND/OR TENANTS THAT WILL HAVE WATER SERVICE INTERRUPTED AT LEAST 5 DAYS IN ADVANCE. SUCH NOTIFICATIONS SHOULD INDICATE THE TIME AND DATE THAT THE WATER WILL BE TURNED OFF AND WHEN THE SERVICE WILL BE RESTORED. NO BUSINESS, PROPERTY OWNER, AND/OR TENANTS SHALL BE WITHOUT WATER SERVICE FOR MORE THAN 8 HOURS. PROPOSED TIE IN LOCATIONS WHICH WILL AFFECT WATER SERVICE TO PROPERTY OWNERS SHALL BE PERFORMED DURING NON-PEAK HOURS.
- THE CONTRACTOR MUST SCHEDULE THE CONNECTIONS TO THE EXISTING MAIN WITH THE CITY SUCH THAT THERE IS A MINIMUM DISRUPTION OF SERVICE. CONNECTIONS SHALL BE MADE DURING PERIODS OF LOW WATER USAGE. THE CONTRACTOR SHALL SUBMIT HIS PROPOSED SCHEDULE FOR COMPLETING WORK FOR CITY APPROVAL AT LEAST 10 DAYS PRIOR TO BEGINNING CONSTRUCTION.
- DEFLECTIONS AT PIPE JOINT OR COUPLINGS SHALL NOT EXCEED THE PIPE MANUFACTURER'S RECOMMENDED MAXIMUM. WHERE DEFLECTIONS ARE GREATER THAN THE MAXIMUM ALLOWED, THE CONTRACTOR SHALL UTILIZE CIMJ LONG SLEEVE OR MULTIPLE JOINTS.
- ANY EXISTING JOINT EXPOSED DURING EXCAVATION SHALL BE REPLACED IF WITHIN FOUR FEET OF PROPOSED JOINT.
- VALVES 12 INCH AND LARGER ARE TO BE OPERATED BY THE CITY WATER DISTRIBUTION DIVISION, 48 HOURS OF ADVANCE NOTICE IS REQUIRED WITH THE WATER DISPATCH AT 316-291-8921.
- ALL WET TAPS SHALL BE INSTALLED BY THE CITY OF WICHITA. THE CONTRACTOR WILL REIMBURSE THE CITY FOR TAPPING FEES.
- THE CONTRACTOR SHALL PROTECT FROM DAMAGE AND SUPPORT EXISTING UTILITIES THROUGH CONSTRUCTION AS APPROVED BY THE UTILITY OWNER AND THE ENGINEER AT THE CONTRACTOR'S EXPENSE.
- WORK DONE UNDER THIS PROJECT IS SUBJECT TO THE CITY OF WICHITA REQUIREMENTS FOR "CONSTRUCTION OF INFRASTRUCTURE IMPROVEMENTS BY PRIVATE CONTRACT". THE CONTRACTOR SHALL BE FAMILIAR AND COMPLY WITH ALL OF THE REQUIREMENTS, INCLUDING BONDING, INSPECTION, TESTING, NOTIFICATION, PROVIDING AS-BUILT DRAWINGS, PAYING FOR ALL NECESSARY CONNECTIONS, AND/OR STREET REPAIR FEES AND PROVIDING PIPE MATERIAL AND OTHER CERTIFICATIONS.
- DEVELOPER FOR THIS PROJECT IS:
CHESTNUT RIDGE LLC
8100 E. 22ND STREET N BLDG. 1000
WICHITA, KANSAS 67226
CONTACT - JEFF MULLEN, MANAGER
316-684-7300

WATER DISTRIBUTION SYSTEM IMPROVEMENTS

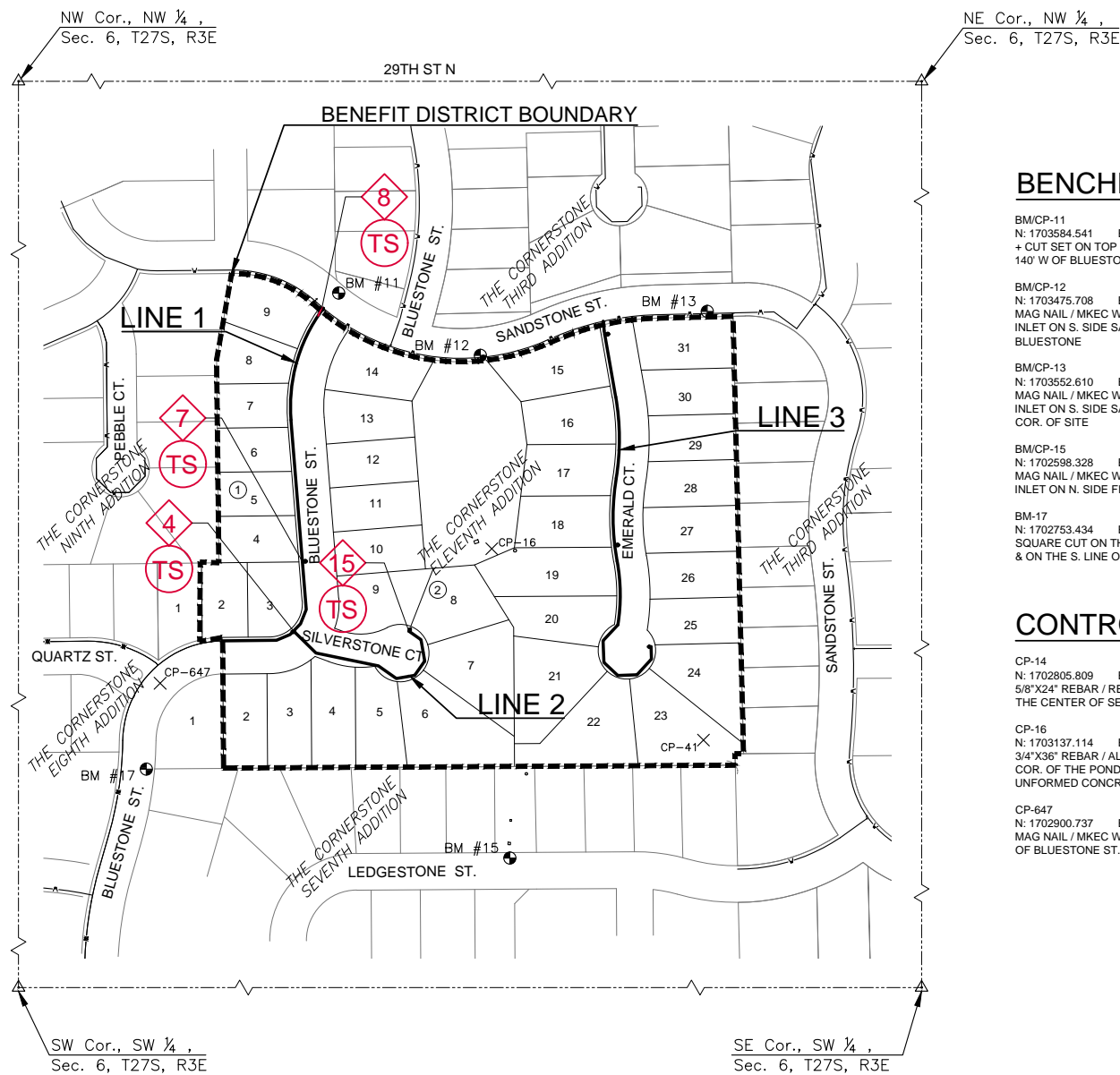
TO SERVE

THE CORNERSTONE ELEVENTH ADD.

CITY OF WICHITA PRIVATE PROJECT NO. 2021-019041PPW

THE CITY OF ANDOVER, KANSAS

ORG CODE 54030980



AS-BUILT PLANS - SEPTEMBER 2022

INSPECTED BY: LARRY SCHALLER, MKEC ENGINEERING, INC.
 CONSTRUCTED BY: NOWAK CONSTRUCTION INC.
 SUPERVISOR: ALAN BLOUGH
 SUPPLIER: CORE & MAIN, AMERICAN CAST IRON PIPE COMPANY

NE Cor., NW ¼,
Sec. 6, T27S, R3E

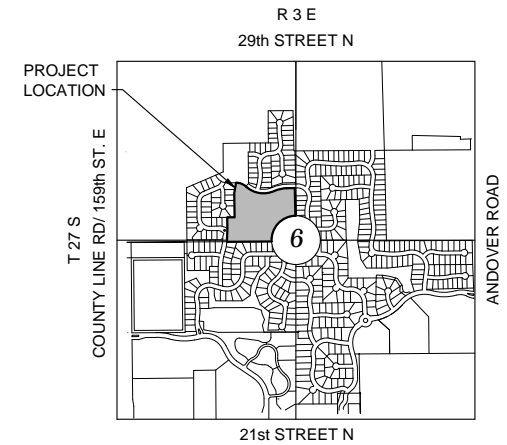
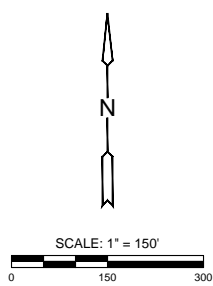
NW Cor., NW ¼,
Sec. 6, T27S, R3E

BENCHMARKS

- BM/CP-11
N: 1703584.541 E: 1703882.817 EL: 1369.59
+ CUT SET ON TOP OF N. CURB SANDSTONE ST.,
140' W OF BLUESTONE
- BM/CP-12
N: 1703475.708 E: 1704130.029 EL: 1366.07
MAG NAIL / MKEC WASHER ON SE COR. CURB
INLET ON S. SIDE SANDSTONE ST., 120'E OF
BLUESTONE
- BM/CP-13
N: 1703552.610 E: 1704526.006 EL: 1366.51
MAG NAIL / MKEC WASHER ON SE COR. CURB
INLET ON S. SIDE SANDSTONE ST., AT THE NE.
COR. OF SITE
- BM/CP-15
N: 1702598.328 E: 1704181.559 EL: 1358.29
MAG NAIL / MKEC WASHER ON NE COR. CURB
INLET ON N. SIDE FIELDSTONE ST.
- BM-17
N: 1702753.434 E: 1703546.969 EL: 1363.61
SQUARE CUT ON THE E. CURB OF BLUESTONE ST.
& ON THE S. LINE OF THE NE. QUARTER OF SEC. 6.

CONTROL POINTS

- CP-14
N: 1702805.809 E: 1704521.095 EL: 1364.12
5/8"X24" REBAR / RED MKEC ID CAP 45'N & 53'W OF
THE CENTER OF SEC. 6
- CP-16
N: 1703137.114 E: 1704149.167 EL: 1366.13
3/4"X36" REBAR / ALUMINUM MKEC ID CAP AT SE.
COR. OF THE POND. 34'E & 8'N. OF NE COR. OF
UNFORMED CONCRETE WEIR.
- CP-647
N: 1702900.737 E: 1703569.794 EL: 1365.95
MAG NAIL / MKEC WASHER AT THE INTERSECTION
OF BLUESTONE ST. & QUARTZ ST.



VICINITY MAP

No Scale

INDEX TO DRAWINGS

SHEET NO.	DESCRIPTION
01	TITLE SHEET
02	DETAILS
03	WATER LINE 1
04	WATER LINE 2
05	WATER LINE 3
06	EROSION CONTROL PLAN
07-11	BMP DETAILS
12	FINAL PLAT

LEGEND

- EXISTING WATER
- PROPOSED WATER

APPROVED AS NOTED
BY WICHITA PUBLIC WORKS
ENGINEERING DIVISION
& BY ANDOVER FIRE DEPARTMENT

Engineering: BEN FERGUSON
 Utilities: GREG LOLLEY
 Fire Department: JOSE OCADIZ

NOTE TO CONTRACTORS

Private Property:
 Installation and testing for the fire protection line is to be performed by a City of Andover licensed fire protection contractor in accordance with the fire codes as adopted by the City of Andover. All material and construction practices for the fire protection line shall comply with the fire codes as adopted by the City of Andover (available from the City of Andover Fire Department). The contractor shall not commence work without notification and approval of the Andover Fire Department. Inspection of the fire protection line is to be provided by a licensed Engineering Firm under contract with the Owner/Developer and the Fire Department. The contractor shall not start work until the project inspector is assigned to the project and present on the site. Any work done without inspection will be required to be uncovered for inspection.

An approved copy of these plans signed by City staff is required on-site.

NOTE: ALL LINES TO BE INSTALLED BY OTHERS ARE SUBJECT TO MABCD REVIEW.

NOTE: CONTRACTOR TO VERIFY DEPTH AND LOCATION OF EXISTING UTILITIES PRIOR TO CONSTRUCTION.



WATER DISTRIBUTION PLANS FOR
THE CORNERSTONE ELEVENTH ADD.
 ANDOVER, KANSAS

©2022
MKEC Engineering
All Rights Reserved
www.mkec.com
These drawings and their contents, including, but not limited to, all concepts, designs, & ideas are the exclusive property of MKEC Engineering (MKEC), and may not be used or reproduced in any way without the express consent of MKEC.

TITLE SHEET

PROJECT NO.	2021-019041ppw				
DATE	MAY 2021				
SCALE	1"=150'				
DESIGNED	LM	DRAWN	LM	CHECKED	DFL

NO.	REVISION	DATE

SHEET NO. 01 OF 12

PLOTTED: Wednesday, August 31, 2022 @ 10:54AM

J:\CML\042940\WLD3D\CIVIL\DWG\WTR11TH_ADDITION\042940-65-3200-11.DWG

1 STA. 10+00, LINE 1=
ST. STA. 19+63.42, 26' LT.
REMOVE EXIST. BLOWOFF AND
CONNECT TO EXIST 8" WATER

#1 @ INTERSECTION OF BLUESTONE ST. & SILVERSTONE
CT. ALONG BLUESTONE ST. CL 165.7' Wstrly & 26.0' N.

2 STA. 10+94.13, LINE 1=
ST. STA. 20+62.34, 24.83' LT.
1-8" DIMJ 22.5° BEND

#2 @ INTERSECTION OF BLUESTONE ST. & SILVERSTONE
CT. ALONG BLUESTONE ST. CL 66.8' Wstrly & 24.8'
N.Wstrly

3 STA. 11+20.02, LINE 1=
ST. STA. 20+98.35, 24.9' LT.
1-8" DIMJ 22.5° BEND

#3 @ INTERSECTION OF BLUESTONE ST. & SILVERSTONE
CT. ALONG BLUESTONE ST. CL 30.8' Wstrly & 24.9'
N.Wstrly

4 STA. 11+28.47, LINE 1=
STA. 10+00.00, LINE 2=
ST. STA. 21+10.04, 26' LT.
1-8"x8" DIMJ TEE
2-8" VALVE ASSEMBLIES (S&W)
(MJ GATE VALVES)
VALVE BOX ELEV=1365.87

#4 @ INTERSECTION OF BLUESTONE ST. & SILVERSTONE
CT. ALONG BLUESTONE ST. CL 17.4' S.Wstrly & 26.0'
N.Wstrly

CAUTION!!
SEVERAL LIVE UTILITIES ARE IN IMMEDIATE
VICINITY.. THE CONTRACTOR SHALL
COORDINATE WITH ALL ADJACENT UTILITIES
TO MAINTAIN AND HOLD THEIR SERVICES IN
PLACE DURING THE WORK. ALL COST
RELATED TO THESE NOTED ITEMS SHALL BE
SUBSIDIARY TO PROJECT.

5 STA. 11+45.97, LINE 1=
ST. STA. 21+34.43, 24.77' LT.
1-8" DIMJ 22.5° BEND

#5 @ INTERSECTION OF BLUESTONE ST. & SILVERSTONE
CT. ALONG BLUESTONE ST. CL 5.3' N.Estrly & 24.8' N.Wstrly

6 STA. 11+72.99, LINE 1=
ST. STA. 21+71.81, 24.21' LT.
1-8" DIMJ 22.5° BEND

#6 @ INTERSECTION OF BLUESTONE ST. & SILVERSTONE
CT. ALONG BLUESTONE ST. CL 42.7' N.rly & 24.2' N.Wstrly

7 STA. 12+56.83, LINE 1=
ST. STA. 22+61.45, 26' LT.
1-FIRE HYDRANT ASSEMBLY
L=5.0'

#7 @ INTERSECTION OF BLUESTONE ST. & SILVERSTONE
CT. ALONG BLUESTONE ST. CL 132.2' N. & 26.0' W.

8 STA. 17+12.34, LINE 1=
ST. STA. 26+98.52, 26' LT.
1-12"x8" TAPPING SLEEVE & VALVE
TO BE FURNISHED & INSTALLED BY
C.O.W. WATER DEPARTMENT.
CONTRACTOR TO REIMBURSE C.O.W.
FOR THIS WORK. CONTRACTOR SHALL
SET FINAL VALVE BOX ELEVATION.
(COST SUBSIDIARY TO PROJECT)

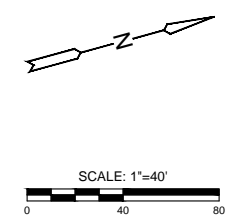
#8 @ INTERSECTION OF SANDSTONE ST. & BLUESTONE ST.
ALONG BLUESTONE ST. CL 21.9' Southerly & 29.0' N.Wstrly

FIRE HYDRANTS REQUIRED			
STATION	BURY LINE ELEVATION	TOP OF PIPE ELEVATION	FIRE HYDRANT BURY REQUIRED*
12+56.83, LINE 1	1366.32	1362.50	4.5'

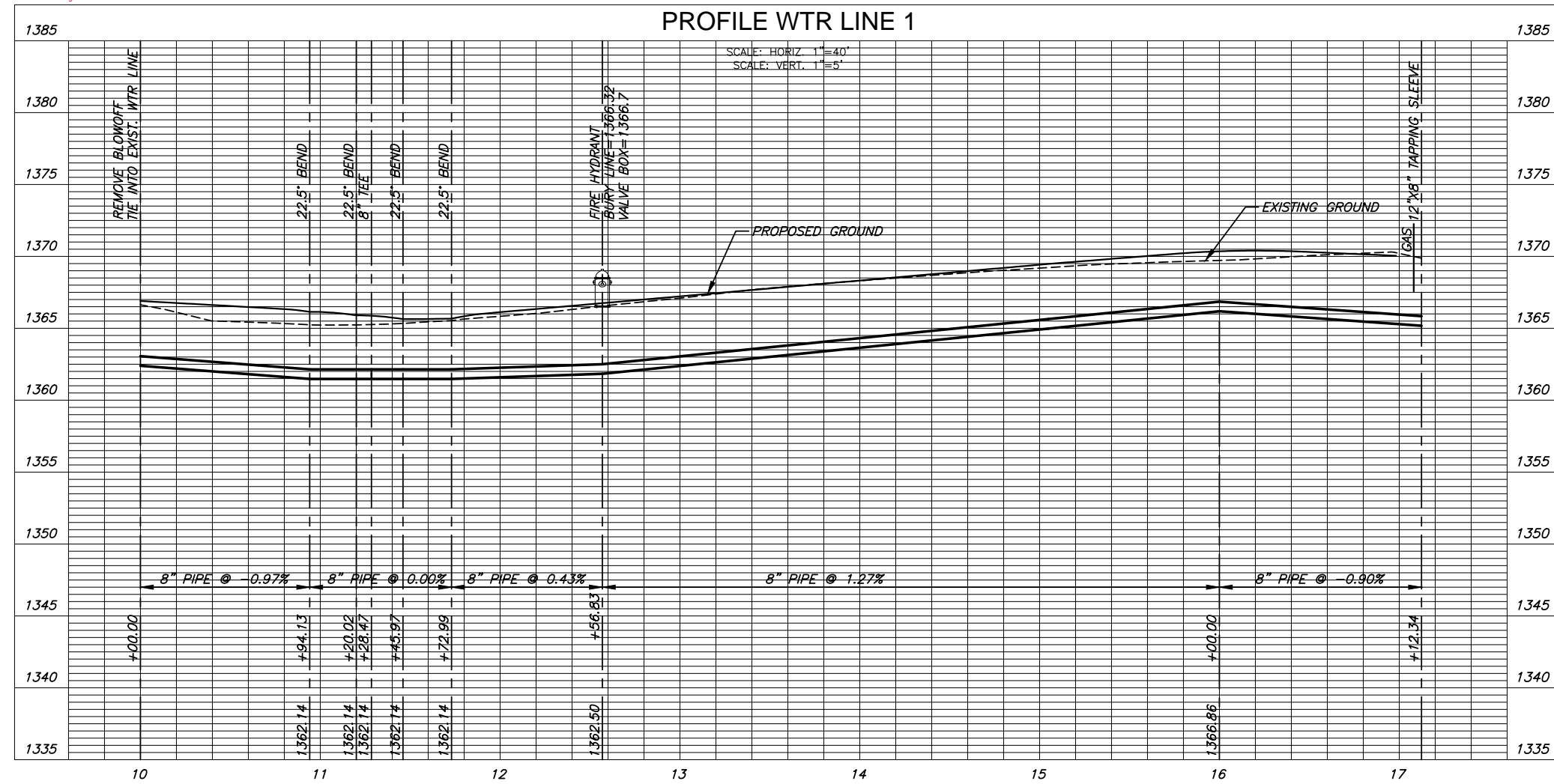


WATER DISTRIBUTION PLANS FOR
THE CORNERSTONE ELEVENTH ADD.
 ANDOVER, KANSAS

AS-BUILT PLANS - SEPTEMBER 2022



PLAN WTR LINE 1
PROFILE WTR LINE 1



NOTE:
CONTRACTOR TO VERIFY LOCATION
AND ELEVATION OF EXISTING WATER
LINE PRIOR TO CONSTRUCTION.

©2022
MKEC Engineering
All Rights Reserved
www.mkec.com
These drawings and their contents,
including, but not limited to, all concepts,
designs, & ideas are the exclusive
property of MKEC Engineering (MKEC),
and may not be used or reproduced in any
way without the express consent of MKEC.

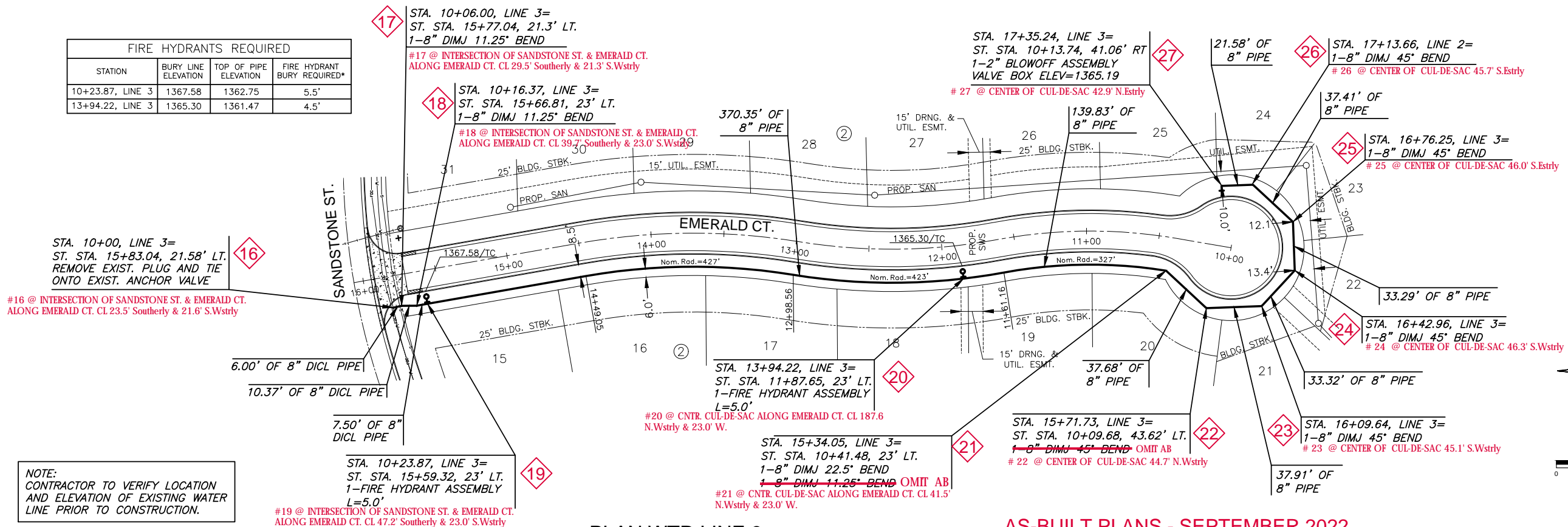
WATER LINE 1

PROJECT NO.	2021-019041ppw	
DATE	MAY 2021	
SCALE	1"=40'	
DESIGNED	DRAWN	CHECKED
DFL	RWB	DFL

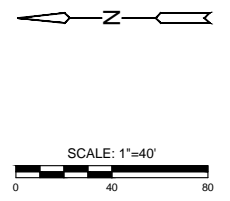
NO.	REVISION	DATE

PLOTTED: Wednesday, August 31, 2022 @ 10:37AM

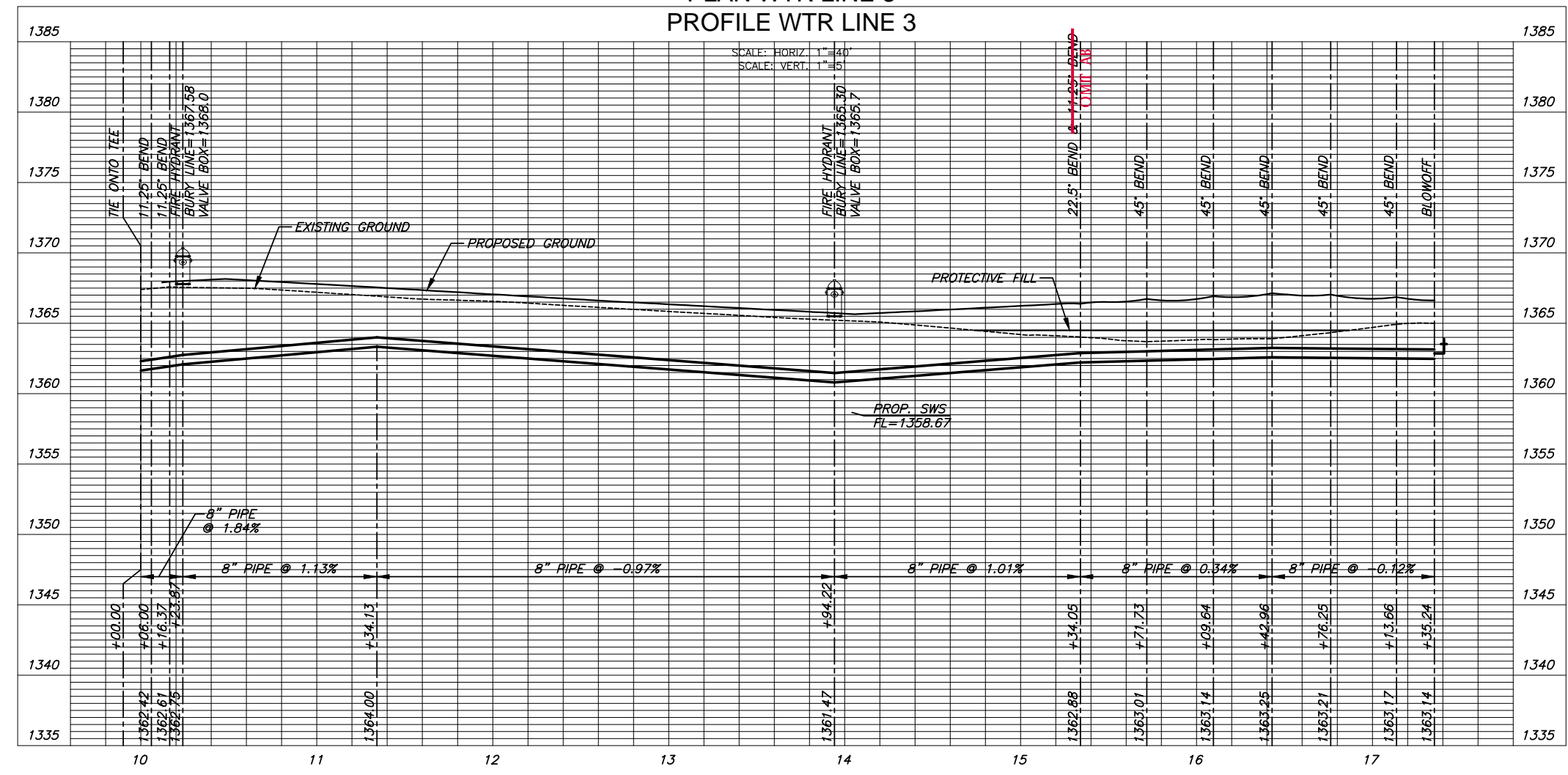
FIRE HYDRANTS REQUIRED			
STATION	BURY LINE ELEVATION	TOP OF PIPE ELEVATION	FIRE HYDRANT BURY REQUIRED*
10+23.87, LINE 3	1367.58	1362.75	5.5'
13+94.22, LINE 3	1365.30	1361.47	4.5'



NOTE:
CONTRACTOR TO VERIFY LOCATION AND ELEVATION OF EXISTING WATER LINE PRIOR TO CONSTRUCTION.



PLAN WTR LINE 3 AS-BUILT PLANS - SEPTEMBER 2022



WATER DISTRIBUTION PLANS FOR
THE CORNERSTONE ELEVENTH ADD.
 ANDOVER, KANSAS

©2022 MKEC Engineering
 All Rights Reserved
 www.mkec.com
 These drawings and their contents, including, but not limited to, all concepts, designs, & ideas are the exclusive property of MKEC Engineering (MKEC), and may not be used or reproduced in any way without the express consent of MKEC.

WATER LINE 3

PROJECT NO.	2021-019041ppw	
DATE	MAY 2021	
SCALE	1"=40'	
DESIGNED	DRAWN	CHECKED
LM	LM	DFL
NO.	REVISION	DATE
SHEET NO. 05 OF 12		

J:\CML\04294\DWG\CIVIL\DWG\WTR11TH_ADDITION\04294-05-3022-11.DWG