

E. 13TH STREET N
130' PUBLIC R/W

Built As Per Plans; Location: From Datum: Centerline 13th St./ N. Charlotte St. 102 ft. S./ 20 ft. W. to Tap, 102 ft. S./19 ft. W. to valve Assembly. (11.25° bends were not used.) Elevation at Valve, 52" from top of valve to existing grade.

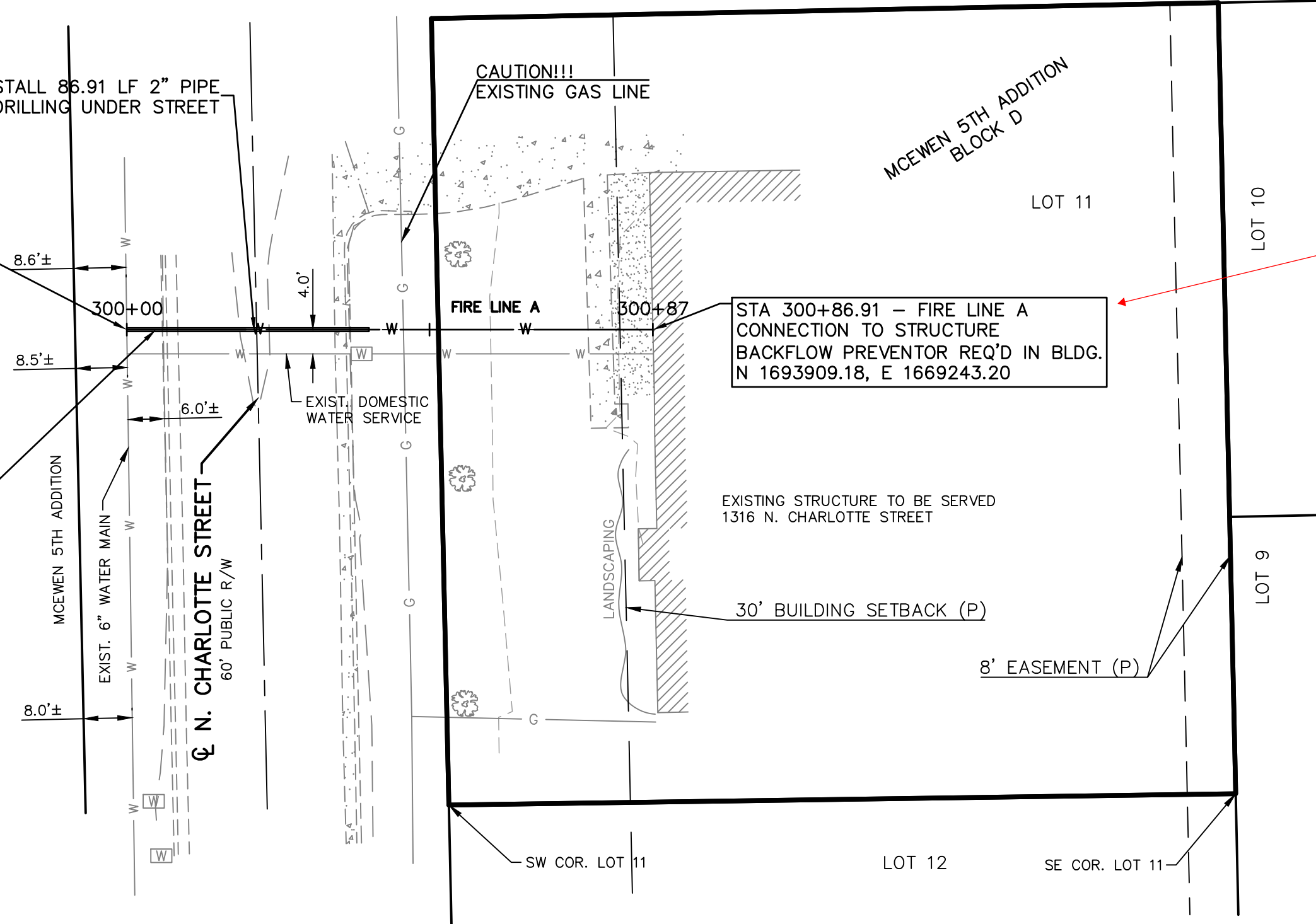
STA 300+00.00 - FIRE LINE A
1 - 6" X 2" TAPPING VALVE ASSEMBLY FURNISHED & INSTALLED BY C.O.W. WATER DEPARTMENT CONTRACTOR TO REIMBURSE CITY FOR TAP FEES
1 - 11.25° VERTICAL BEND DOWN (EAST)
CONTRACTOR RECEIVING PIT FOR DIRECTIONAL DRILLING TO BE ADEQUATELY SIZED BY TAPPING VALVE ASSEMBLY INSTALLATION AS WELL AS FOR ANY REQUIRED THRUST BLOCKING
TOP OF VALVE BOX ELEVATION = 1400.4
(MATCH EXISTING GRADES)
N 1693909.18, E 1669156.29

Not As Per Plans; Location: From Datum: Centerline 13th St./ N. Charlotte St. (11.25° bends were not used.)

STA 300+04.80 - FIRE LINE A
1 - 11.25° VERTICAL BEND (UP)
INSIDE RECEIVING PIT FOR DIRECTIONAL DRILLING
N 1693909.18, E 1669161.10

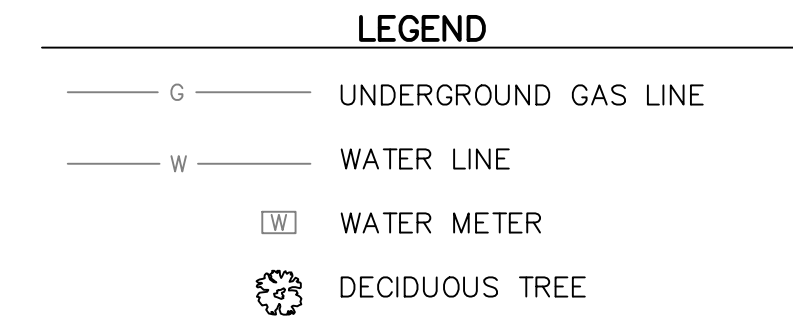
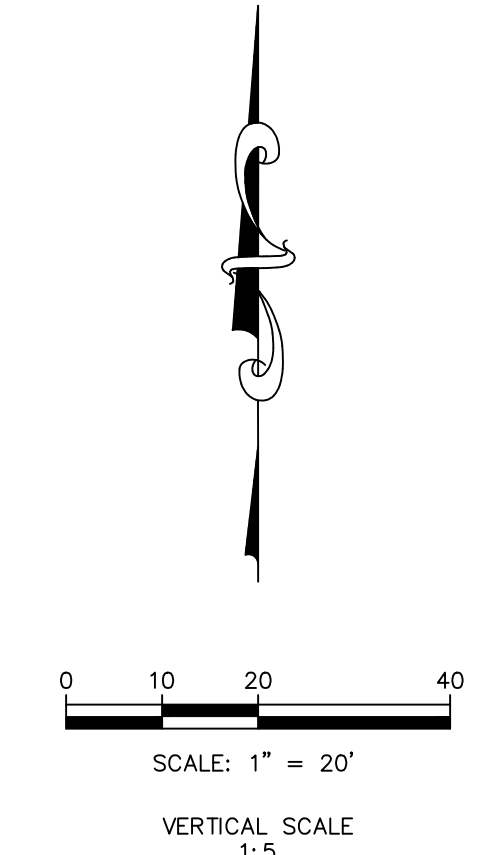
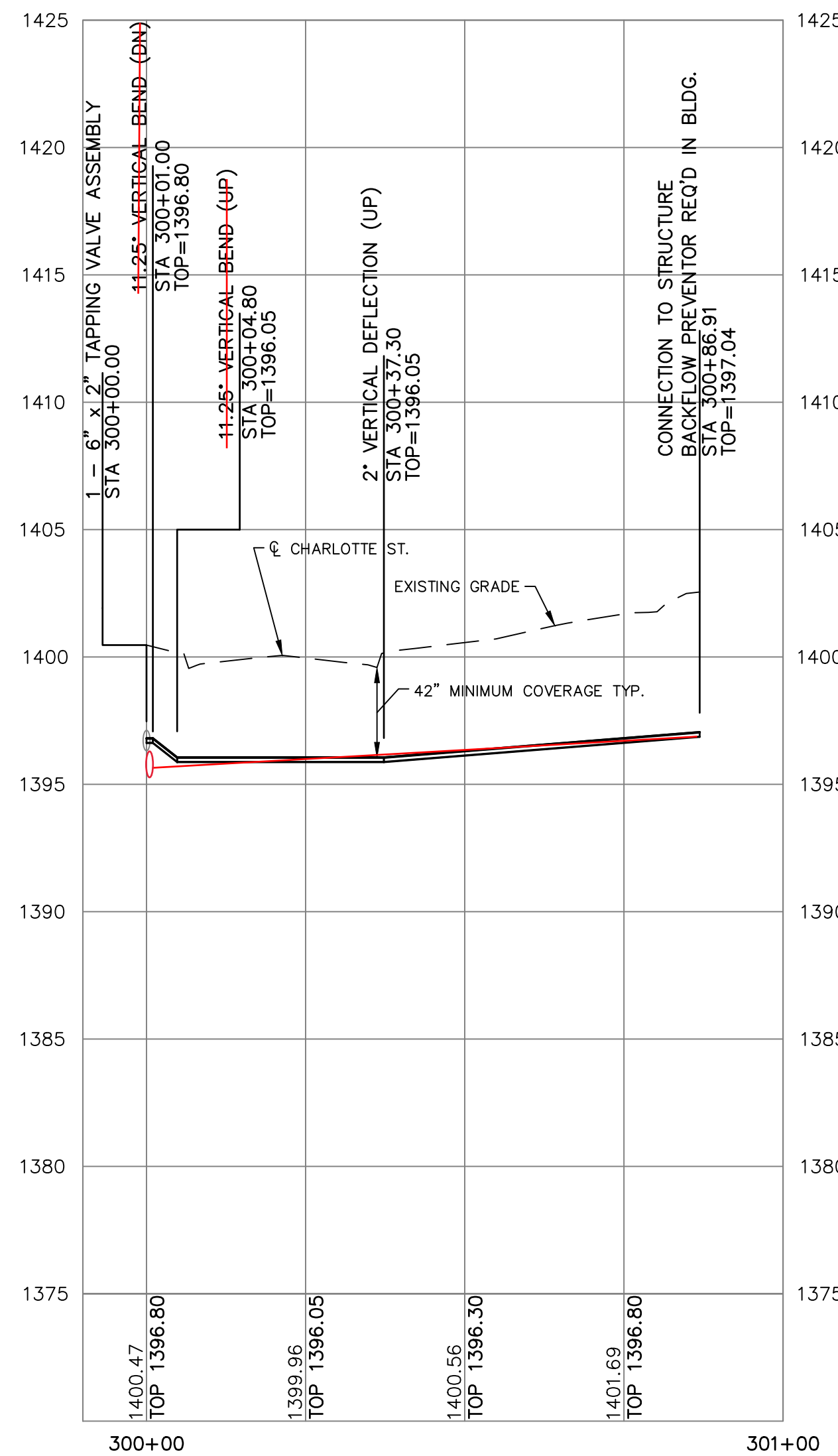
Built As Per Plans; Location: From Datum: Centerline 13th St./ N. Charlotte St. 102 ft. S./ 70 ft. W. to 2" Copper Pipe, (3 ft. of 2" Copper Pipe was used under footing and 2" 90° bend up for 2" copper riser), 104 ft. S./73 ft. W. to (sta: 300+86.91)

INSTALL 86.91 LF 2" PIPE
40 LF DIRECTIONAL DRILLING UNDER STREET

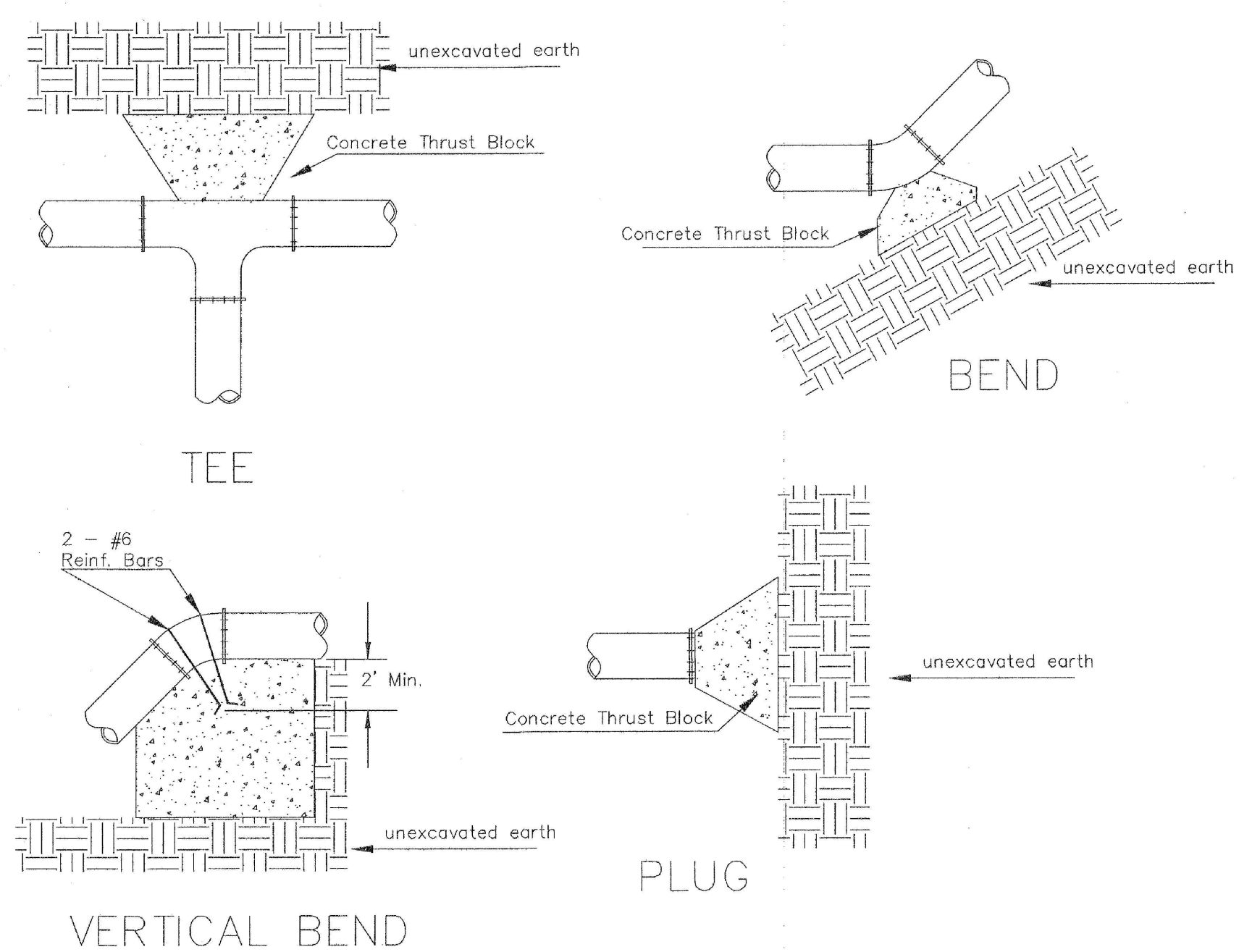


CONTRACTOR TO FIELD VERIFY AND LOCATE ALL UTILITIES AND WATER MAIN PRIOR TO CONSTRUCTION AND REPORT ANY DISCREPANCIES TO ENGINEER

FIRE LINE A

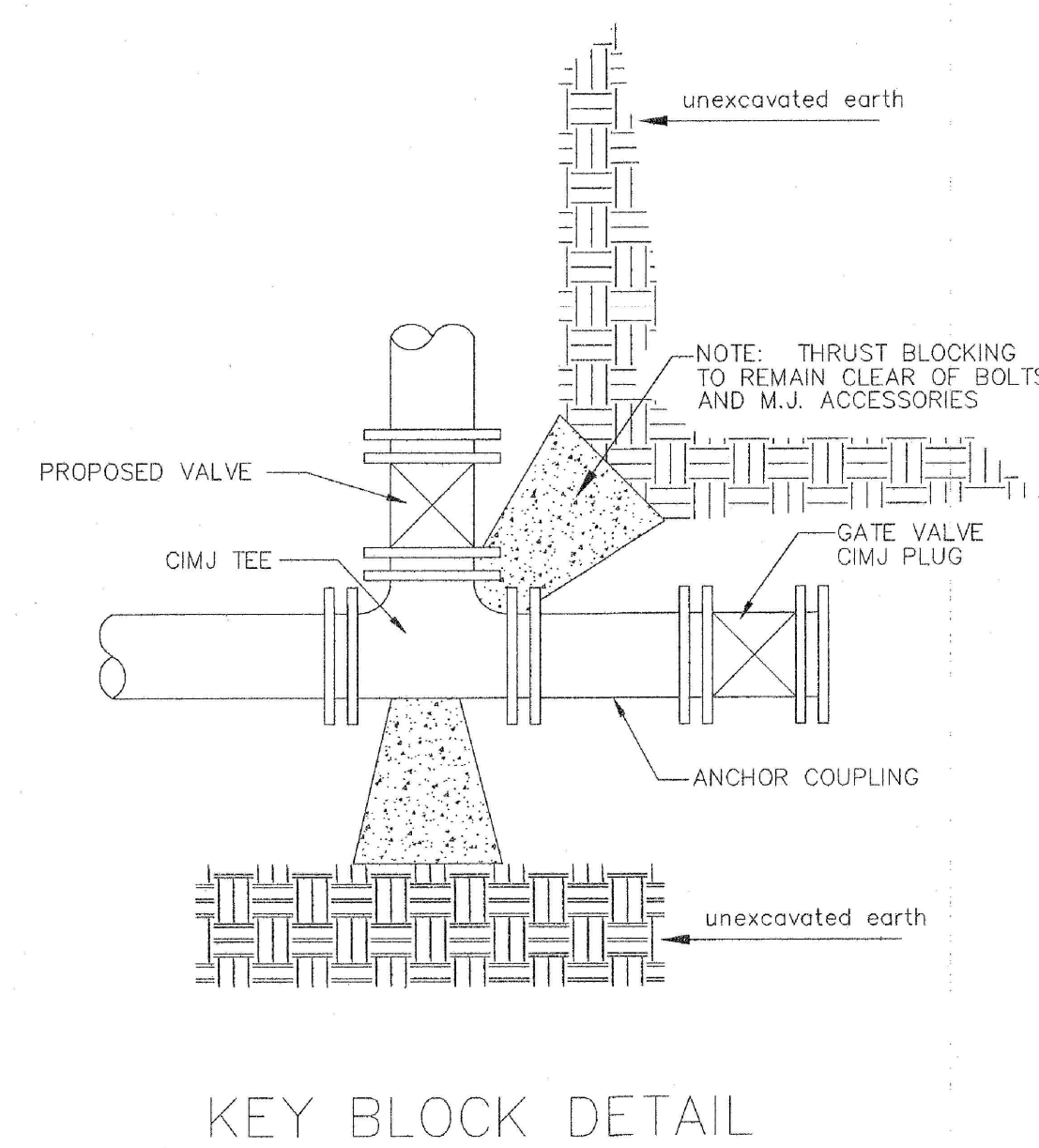


							CHK
							DWN
							DSN
							DESCRIPTION
							DATE
							REV
SHAWN R. BRYAN ENGINEER KS # 17899							
KAW VALLEY ENGINEERING 200 N. EMPORIA, SUITE 100 WICHITA, KANSAS 67202 PH. (316) 625-4309 www.kveng.com							
KAW VALLEY ENGINEERING, INC. IS AUTHORIZED TO OFFER ENGINEERING SERVICES BY KANSAS STATE CERTIFICATE OF AUTHORIZATION # E-113. EXPIRES 12/31/22							
HOMEPLUS FIRE LINE 1316 N. CHARLOTTE STREET WICHITA, KANSAS							
PLAN AND PROFILE							
PROJ. NO. G21_1982							
DESIGNER SRB				DRAWN BY CS			
CFN 1982WPP							
SHEET 2 OF 2							

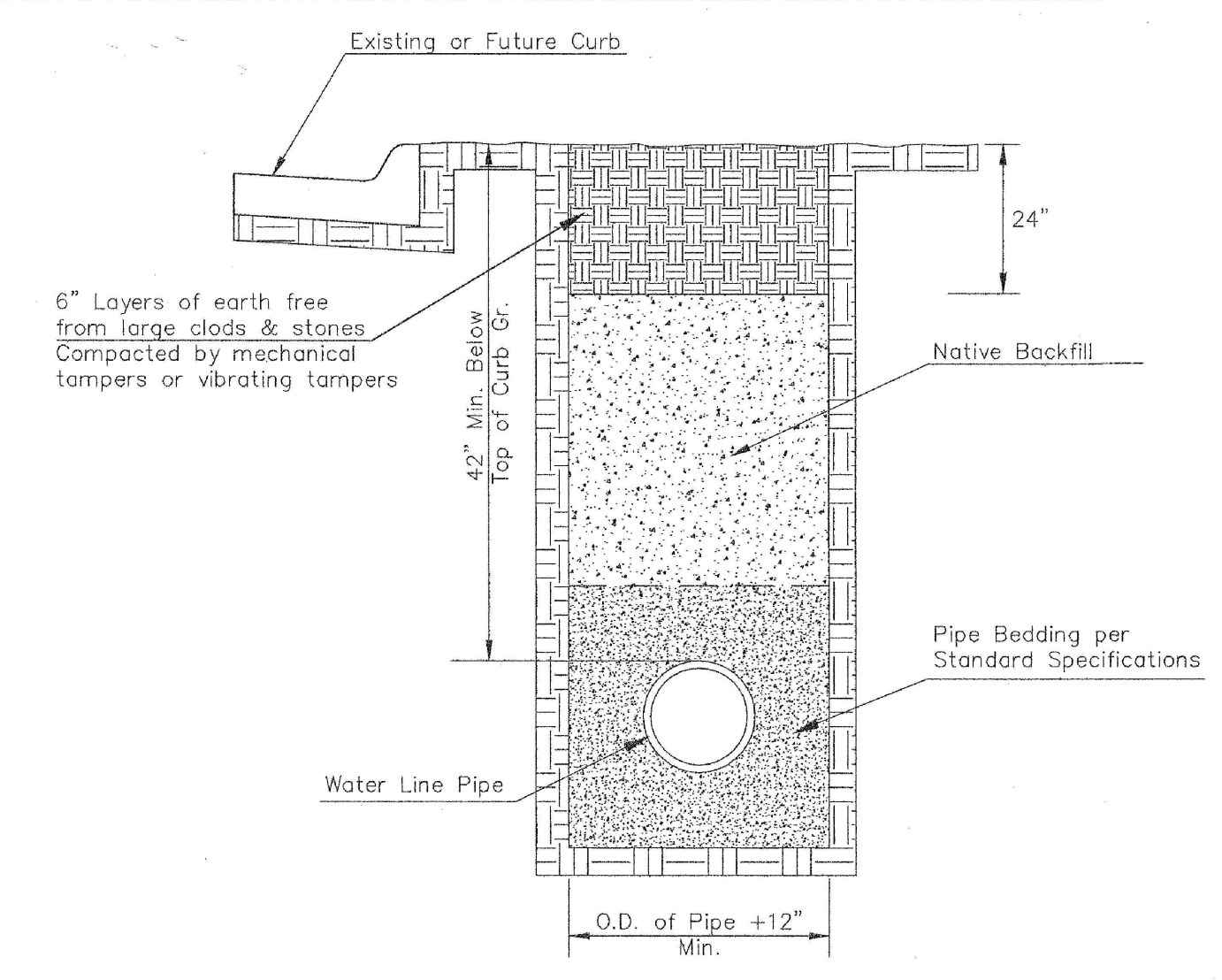


PIPE SIZE	THRUST AT FITTINGS IN TONS-AT 150#/IN ² P					
	PLUG	90°	45°	22 1/2°	11 1/4°	TEE
6"	2.8	3.95	2.15	1.09	.55	2.8
8"	4.9	6.95	3.75	1.90	.96	4.9
12"	11.4	16.1	8.75	4.45	2.25	11.4
16"	20.15	28.5	15.4	7.85	3.95	20.15
20"	31.15	44.0	23.85	12.15	6.10	31.15
24"	44.55	63.0	34.1	17.4	8.75	44.55

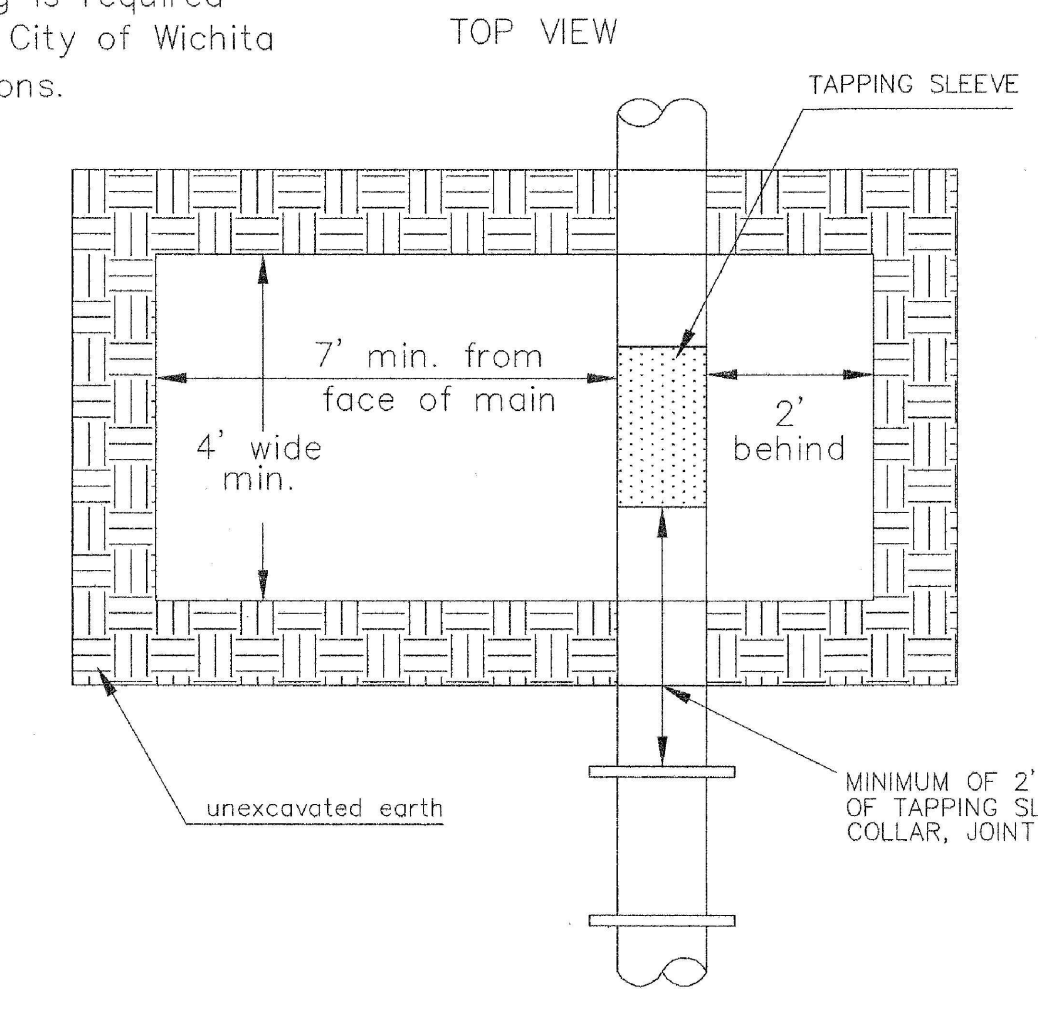
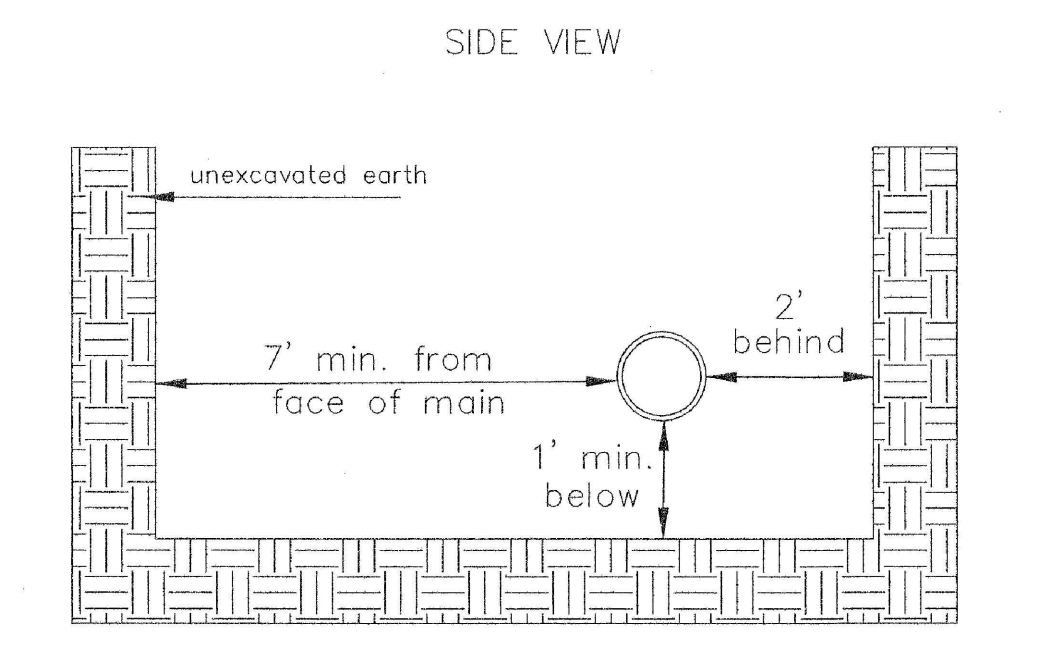
TYPICAL THRUST BLOCKS



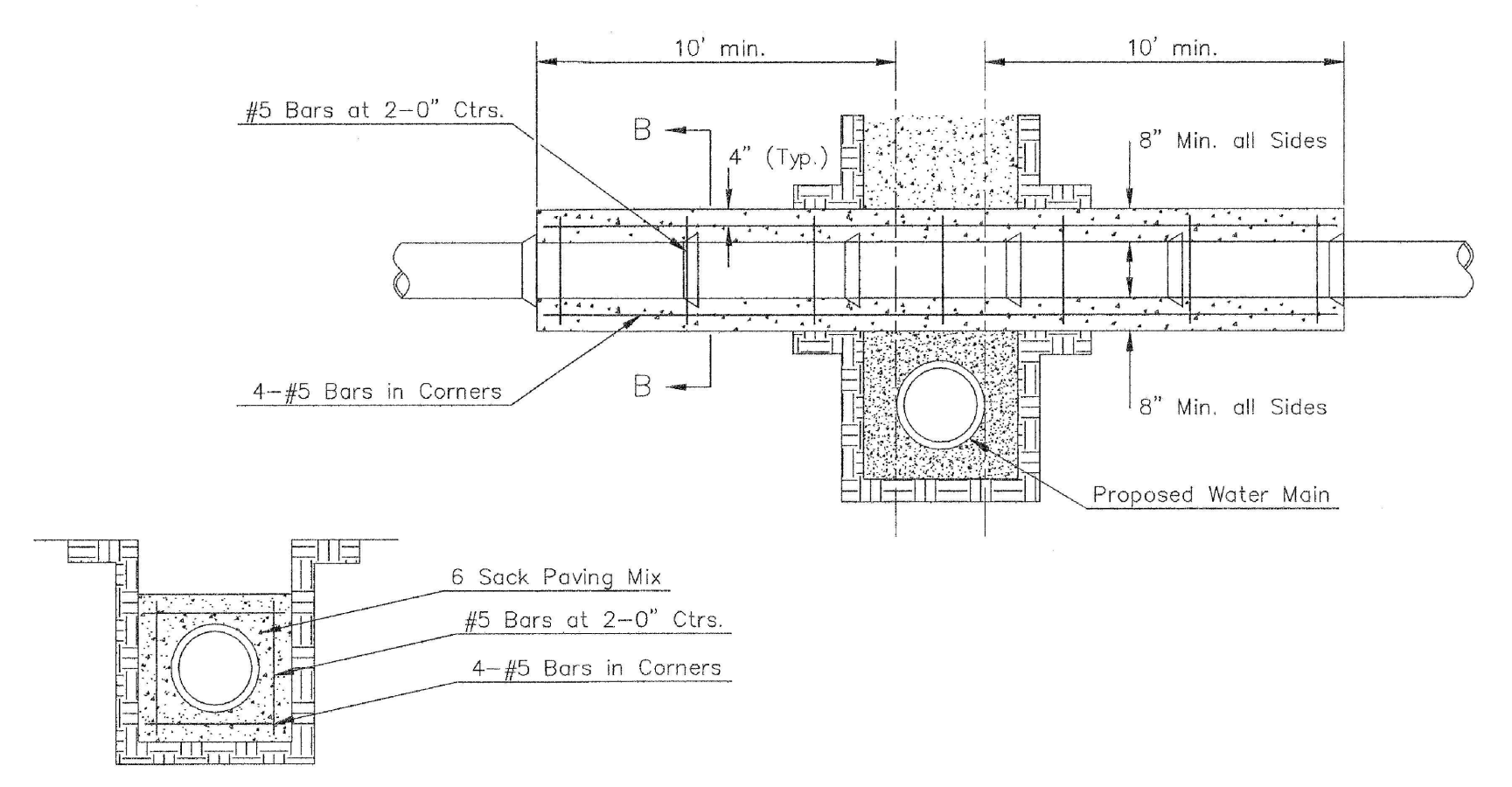
* PLANS GOVERN UNLESS OTHERWISE NOTED ON PLANS



TRENCH COMPACTION IN ROAD RIGHT-OF-WAY



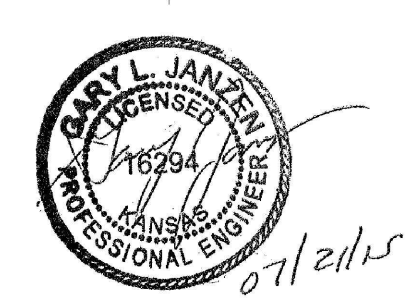
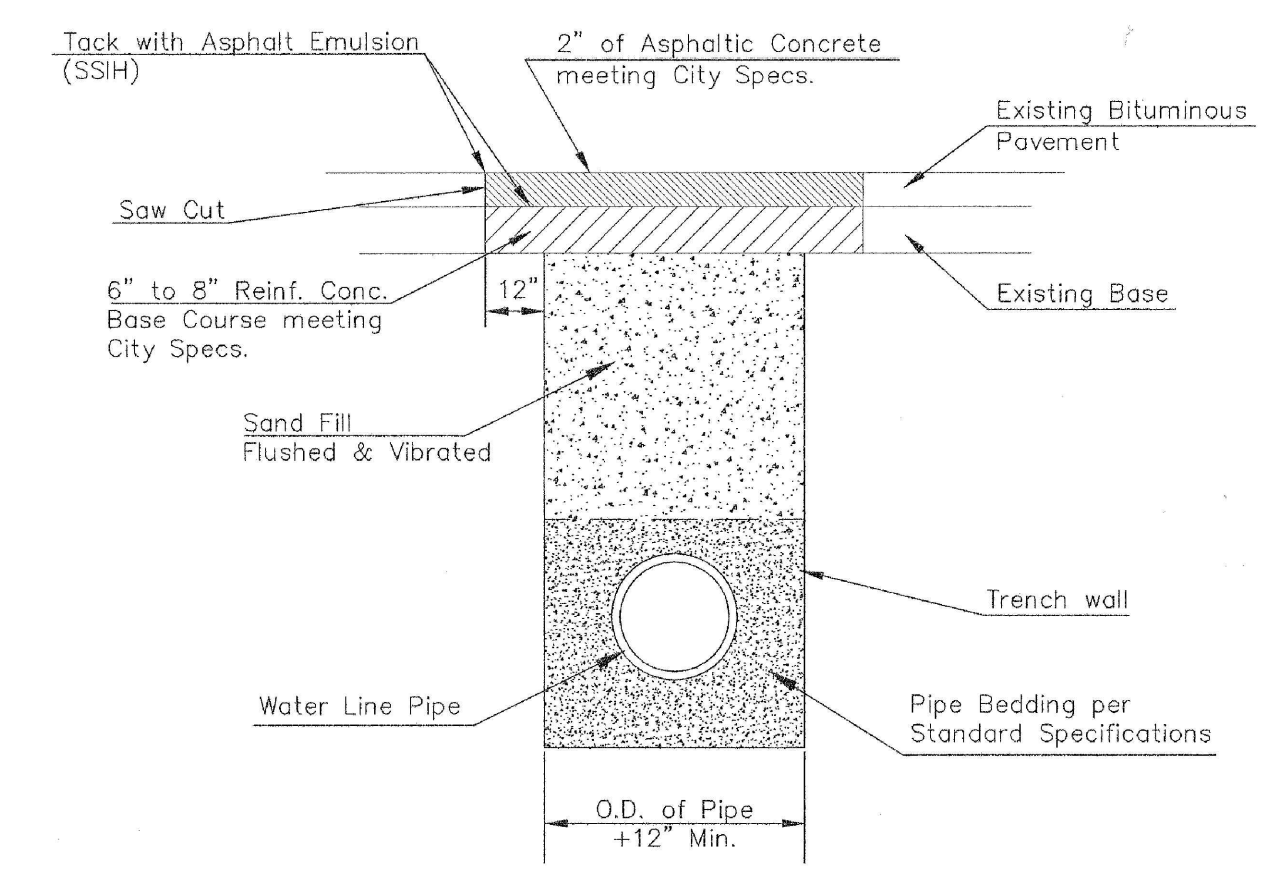
EXCAVATION FOR WET TAP



SECTION B-B

Note: Encasement to begin and end at a Bell on Sanitary Sewer Pipe.

PAVEMENT REPLACEMENT & TRENCH COMPACTION UNDER EXISTING AND PROPOSED CITY ROADS



REVISED: JULY 2015

MISCELLANEOUS WATER DETAILS

CITY ENGINEER
GARY JANZEN, P.E.

PROJECT NUMBER	OCA NUMBER	DATE

CITY ENGINEER'S OFFICE
CITY HALL - SEVENTH FLOOR
455 NORTH MAIN STREET
WICHITA, KANSAS 67202-1620
(316) 268-4501

SHEET

WL-104

CHK	
DWN	
DSN	
DESCRIPTION	
DATE	
REV	
SHAWN R. BRYAN ENGINEER KS # 17899	
200 N. EMPORIA, SUITE 100 WICHITA, KANSAS 67202 PH. (316) 268-4309 www.kawvalley.com www.kve.com	
KAW VALLEY ENGINEERING, INC. IS AUTHORIZED TO OFFER ENGINEERING SERVICES BY KANSAS STATE CERTIFICATE OF AUTHORIZATION # E-113. EXPIRES 12/31/22	
HOMEPLUS FIRE LINE 1316 N. CHARLOTTE STREET WICHITA, KANSAS	
FIRE LINE IMPROVEMENTS WATER DETAIL SHEET	
PROJ. NO.	G21_1982
DESIGNER	SRB
DRAWN BY	CS
CFN	1982WDET
SHEET	04