

PLOTTED: Wednesday, July 19, 2023 @ 03:09pm
J:\PROJECTS\20210616101010293_LUES_PROPERTY_16293_CADD\SHOTS\06 CIVIL\WTRW\WEST FOUNDERS PARKWAY\16293-05-3000-WFP.DWG

GENERAL NOTES

- THE CONTRACTOR SHALL COMPLY WITH ALL APPLICABLE SAFETY REGULATIONS. ALL CONSTRUCTION SHALL BE COMPLETED FOLLOWING CURRENT CITY STANDARD SPECIFICATIONS AND SPECIAL PROVISIONS.
- CONTRACTOR WILL BE REQUIRED TO PROVIDE NOTICE TO UTILITY COMPANIES A MINIMUM OF SEVENTY-TWO (72) HOURS PRIOR TO ANY EXCAVATION. AS FOLLOWS:
KANSAS ONE-CALL 687-2470
THE CONTRACTOR MUST NOTIFY THE FOLLOWING IN CASE OF AN EMERGENCY:
AT&T 1-800-246-8464
BLACK HILLS ENERGY (GAS) 1-800-694-8989
CITY OF WICHITA WATER & SEWER 1-316-219-8921
CITY OF WICHITA STORMWATER 1-316-268-4090
CITY OF WICHITA TRAFFIC 1-316-268-4034
COX COMMUNICATIONS 1-888-249-3530
KANSAS GAS SERVICE 1-888-492-4950
EVERGY 1-800-544-4857
- UTILITY SERVICE LINES, POLES, ETC. ARE TO BE ADJUSTED AS NECESSARY BY OTHERS PRIOR TO CONSTRUCTION UNLESS THE PLANS SPECIFICALLY CALL FOR THEIR ADJUSTMENT BY THE CONTRACTOR OR UNLESS THE PLANS SPECIFICALLY IDENTIFY A UTILITY TO BE ADJUSTED BY ITS OWNER DURING CONSTRUCTION. EXISTING UTILITIES AND THEIR LOCATION, AS SHOWN ON THE PLANS, REPRESENT THE BEST INFORMATION OBTAINABLE FOR DESIGN. THE CONTRACTOR WILL BE REQUIRED TO WORK AROUND EXISTING UTILITIES WITHIN THE RIGHT-OF-WAY WHICH DO NOT CONFLICT WITH PROPOSED CONSTRUCTION.
- RUBBLE FROM THE REMOVAL OF MISCELLANEOUS STRUCTURES AND EXCESS EXCAVATION WHICH IS TO BE WASTED SHALL BE DISPOSED OF ON SITES TO BE PROVIDED BY THE CONTRACTOR. THESE SITES SHALL BE APPROVED BY THE ENGINEER AS TO SUITABILITY, APPEARANCE AND SITE LOCATION. LOCATIONS, IN THE OPINION OF THE ENGINEER, THAT WILL LEAVE AN UNSIGHTLY APPEARANCE WILL NOT BE APPROVED. ALL DISPOSAL SITES MUST BE APPROVED BY THE KANSAS DEPARTMENT OF HEALTH AND ENVIRONMENT. MATERIAL EITHER STOCKPILED OR DISPOSED OF IN A FLOOD PLAIN WILL REQUIRE A KANSAS STATE BOARD OF AGRICULTURE PERMIT. ANY MATERIAL DUMPED IN WATERS OF THE UNITED STATES OR WETLANDS IS SUBJECT TO U.S. CORPS OF ENGINEERS PERMITTING REGULATIONS. ANY MATERIAL BURIED OR STOCKPILED BEYOND APPROVED CONSTRUCTION LIMITS WILL REQUIRE ADDITIONAL ARCHAEOLOGICAL INVESTIGATIONS UNLESS BURIED IN A PREVIOUSLY APPROVED BORROW LOCATION.
- TREES AND SHRUBS IN PUBLIC RIGHT-OF-WAY WHICH ARE IN DIRECT CONFLICT WITH PROPOSED NEW CONSTRUCTION SHALL BE REMOVED BY THE CONTRACTOR WITH THE CITY ENGINEER'S APPROVAL. TREES AND SHRUBS WHICH ARE NOT IN DIRECT CONFLICT WITH PROPOSED NEW CONSTRUCTION SHALL BE SAVED AND PROTECTED FROM DAMAGE.
- THE CONTRACTOR SHALL GIVE ALL PROPERTY OWNERS AND/OR TENANTS OF DEVELOPED PROPERTY ABUTTING THE CONSTRUCTION OF THIS PROJECT A MINIMUM OF TEN (10) DAYS NOTICE PRIOR TO START OF CONSTRUCTION.
- THE CONTRACTOR SHALL BE RESPONSIBLE FOR PRESERVING PROPERTY IRONS. THE CONTRACTOR WILL BE REQUIRED TO RE-ESTABLISH ANY PROPERTY IRONS WHICH ARE DAMAGED OR DESTROYED BY HIS CONSTRUCTION OPERATIONS. SUCH IRONS SHALL BE RE-ESTABLISHED BY A LICENSED LAND SURVEYOR IN ACCORDANCE WITH STATE LAWS.
- THE ENGINEERING DIVISION SHALL FIELD LOCATE WATER VALVES ONE TIME DURING CONSTRUCTION WHEN REQUESTED BY THE CONTRACTOR. IT SHALL BE THE CONTRACTOR'S RESPONSIBILITY TO PRESERVE SUCH FIELD LOCATIONS DURING THE CONSTRUCTION PROCESS. WATER VALVES, VALVE BOXES OR FIRE HYDRANTS DAMAGED DURING CONSTRUCTION SHALL BE REPAIRED BY CONTRACTOR AT HIS OWN EXPENSE. VALVE BOXES AND WATER METERS WITHIN THE PROJECT LIMITS SHALL BE ADJUSTED TO MATCH FIELD GRADES BY THE CONTRACTOR.
- THE CONTRACTOR SHALL NOTIFY THE INSPECTING ENGINEER AND DAWNITA REINHARDT AT 650-0740 WITH THE CITY OF WICHITA WITH THE ANTICIPATED CONSTRUCTION START DATE AND NOTIFY THEM OF PROJECT COMPLETION. STAKING AND INSPECTION FOR THIS PROJECT WILL BE THE RESPONSIBILITY OF THE CONTRACTOR.
- IF TRAFFIC WILL BE IMPACTED BY CONSTRUCTION, A TRAFFIC CONTROL PLAN MUST BE SUBMITTED AND APPROVED BY THE CITY TRAFFIC ENGINEER BEFORE CONSTRUCTION CAN BEGIN. THE CONTRACTOR SHALL BE RESPONSIBLE FOR ALL TRAFFIC CONTROL MEASURES TO FACILITATE CONSTRUCTION. ALL CONSTRUCTION ZONE MARKINGS AND SIGNAGE SHALL CONFORM TO THE LATEST VERSION OF THE MANUAL ON UNIFORM TRAFFIC CONTROL DEVICES (MUTCD) AS PUBLISHED BY THE US DEPT. OF TRANSPORTATION, FEDERAL HIGHWAY ADMINISTRATION. ALL COSTS ASSOCIATED WITH CONSTRUCTION MARKINGS AND SIGNAGE SHALL BE THE CONTRACTOR'S RESPONSIBILITY.
- ALL ELEVATIONS SHOWN ARE NAVD 88.
- ALL AREAS DISTURBED DURING CONSTRUCTION THAT WILL NOT BE UNDER PROPOSED PAVEMENT SHALL BE RESTORED TO MATCH EXISTING CONDITIONS.
- ALL APPLICABLE FEES (TAP, EQUITY, IN LIEU OF MAIN BENEFIT) MUST BE PAID BEFORE ANY CONNECTIONS CAN BE MADE ON THIS PROJECT. QUOTES CAN BE OBTAINED ON FEES BY CALLING 316-268-4555.
- CITY MAINTENANCE OF WATER MAINS ENDS AT RIGHT-OF-WAY OR EASEMENT LINE OR WITHIN TWO FEET OF VAULT.
- MAINTAIN A MINIMUM OF 10-FOOT HORIZONTAL SEPARATION BETWEEN ALL WATER LINES (MANS, SERVICES, AND FIRE HYDRANTS) AND ALL SANITARY SEWER LINES (MANS, SERVICES, AND MANHOLES). ALL SEPARATION DISTANCES ARE TO BE MEASURED FROM EDGE-TO-EDGE, AT THE CLOSEST POINT.
- MAINTAIN A MINIMUM OF 2-FOOT VERTICAL SEPARATION BETWEEN ALL WATER LINES (MANS AND SERVICES) AND ALL GRAVITY SANITARY SEWER LINES (MANS, SERVICES, AND MANHOLES) AT CROSSINGS. ALL SEPARATION DISTANCES ARE TO BE MEASURED FROM EDGE-TO-EDGE, AT THE CLOSEST POINT.
- MAINTAIN A MINIMUM OF 2-FOOT VERTICAL SEPARATION BETWEEN ALL WATER LINES (MANS AND SERVICES) AND ALL PRESSURIZED SANITARY SEWER LINES (FORCE MAINS AND SERVICES) AT CROSSINGS. WATERLINES MUST ALWAYS BE PLACED ABOVE PRESSURIZED SANITARY SEWER LINES WHERE THEY CROSS. ALL SEPARATION DISTANCES ARE TO BE MEASURED FROM EDGE-TO-EDGE, AT THE CLOSEST POINT.
- CONTRACTOR SHALL LIMIT THE EXTENT OF TRENCH OPEN OVERNIGHT AND WEEKENDS TO LESS THAN 50 FEET.
- EXISTING UTILITIES AND THEIR LOCATION, AS SHOWN ON THE PLANS REPRESENT THE BEST INFORMATION OBTAINABLE FOR DESIGN. LOCATION INFORMATION HAS BEEN OBTAINED FROM THE VARIOUS COMPANIES AND IS EITHER FROM COMPANY UTILITY DRAWINGS OR COMPANY PROVIDED FIELD LOCATIONS. THE PLAN LOCATIONS SHOWN ARE NOT GUARANTEED. ADDITIONAL EXISTING UTILITIES MAY ALSO BE ENCOUNTERED.
- OPENING AND CLOSING OF WATER VALVES SHALL BE DONE SLOWLY TO PREVENT DAMAGE TO THE WATER DISTRIBUTIONS SYSTEM FROM WATER HAMMER. ALL VALVES CLOSED BY THE CONTRACTOR MUST BE REOPENED AS NEW CONSTRUCTION PERMITS. THE PROJECT INSPECTOR MUST ASCERTAIN THAT ANY VALVE CLOSED BY THE CONTRACTOR IS REOPENED. THE CONTRACTOR WILL BE PERMITTED TO OPERATE WATER VALVES ONLY WHEN THE PROJECT INSPECTOR ASSIGNED TO THE PROJECT IS PRESENT.
- THE CONTRACTOR SHALL LAY A TRACER WIRE AND SET TEST STATIONS ALONG ALL WATER PIPE INSTALLED IN ACCORDANCE WITH CITY SPECIFICATIONS AND TRACER WIRE DETAIL ON DETAIL SHEET WL-101. COST IS SUBSIDIARY TO PIPE INSTALLATION.
- THE CONTRACTOR SHALL PROVIDE MATERIALS FOR TEMPORARY BLOWOFF OF WATERLINES. CONNECTIONS TO THE EXISTING WATERLINE(S) SHALL BE MADE WITH CLEAN, SWABBED PIPE AND FLUSHED UPON COMPLETION OF TIE-INS
- REQUESTS FOR SHORT TERM WATER INTERRUPTIONS SHALL BE MADE TO THE CITY WATER DISTRIBUTION DIVISION AND WILL BE SUBJECT TO THEIR APPROVAL. THE CONTRACTOR SHALL GIVE WRITTEN NOTICE TO ANY PROPERTY OWNER, BUSINESS, AND/OR TENANTS THAT WILL HAVE WATER SERVICE INTERRUPTED AT LEAST 5 DAYS IN ADVANCE. SUCH NOTIFICATIONS SHOULD INDICATE THE TIME AND DATE THAT THE WATER WILL BE TURNED OFF AND WHEN THE SERVICE WILL BE RESTORED. NO BUSINESS, PROPERTY OWNER, AND/OR TENANTS SHALL BE WITHOUT WATER SERVICE FOR MORE THAN 8 HOURS. PROPOSED TIE IN LOCATIONS WHICH WILL AFFECT WATER SERVICE TO PROPERTY OWNERS SHALL BE PERFORMED DURING NON-PEAK HOURS.
- THE CONTRACTOR MUST SCHEDULE THE CONNECTIONS TO THE EXISTING MAIN WITH THE CITY SUCH THAT THERE IS A MINIMUM DISRUPTION OF SERVICE. CONNECTIONS SHALL BE MADE DURING PERIODS OF LOW WATER USAGE. THE CONTRACTOR SHALL SUBMIT HIS PROPOSED SCHEDULE FOR COMPLETING WORK FOR CITY APPROVAL AT LEAST 10 DAYS PRIOR TO BEGINNING CONSTRUCTION.
- DEFLECTIONS AT PIPE JOINT OR COUPLINGS SHALL NOT EXCEED THE PIPE MANUFACTURERS RECOMMENDED MAXIMUM. WHERE DEFLECTIONS ARE GREATER THAN THE MAXIMUM ALLOWED, THE CONTRACTOR SHALL UTILIZE CBJ LONG SLEEVE OR MULTIPLE JOINTS.
- ANY EXISTING JOINT EXPOSED DURING EXCAVATION SHALL BE REPLACED IF WITHIN FOUR FEET OF PROPOSED JOINT.
- VALVES 12 INCH AND LARGER ARE TO BE OPERATED BY THE CITY WATER DISTRIBUTION DIVISION, 48 HOURS OF ADVANCE NOTICE IS REQUIRED WITH THE WATER DISPATCH AT 316-291-8921.
- ALL WET TAPS SHALL BE INSTALLED BY THE CITY OF WICHITA. THE CONTRACTOR WILL REIMBURSE THE CITY FOR TAPPING FEES.
- THE CONTRACTOR SHALL PROTECT FROM DAMAGE AND SUPPORT EXISTING UTILITIES THROUGH CONSTRUCTION AS APPROVED BY THE UTILITY OWNER AND THE ENGINEER AT THE CONTRACTOR'S EXPENSE.
- WORK DONE UNDER THIS PROJECT IS SUBJECT TO THE CITY OF WICHITA REQUIREMENTS FOR "CONSTRUCTION OF INFRASTRUCTURE IMPROVEMENTS BY PRIVATE CONTRACT". THE CONTRACTOR SHALL BE FAMILIAR AND COMPLY WITH ALL OF THE REQUIREMENTS, INCLUDING BIDDING, INSPECTION TESTING, NOTIFICATION, PROVIDING AS-BUILT DRAWINGS, PAYING FOR ALL NECESSARY CONNECTIONS, AND/OR STREET REPAIR FEES AND PROVIDING PIPE MATERIAL AND OTHER CERTIFICATIONS.

WATER DISTRIBUTION SYSTEM IMPROVEMENTS

TO SERVE

THE HERITAGE MIXED-USE FIRST

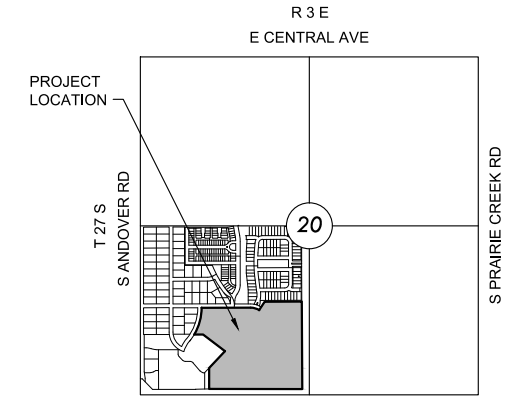
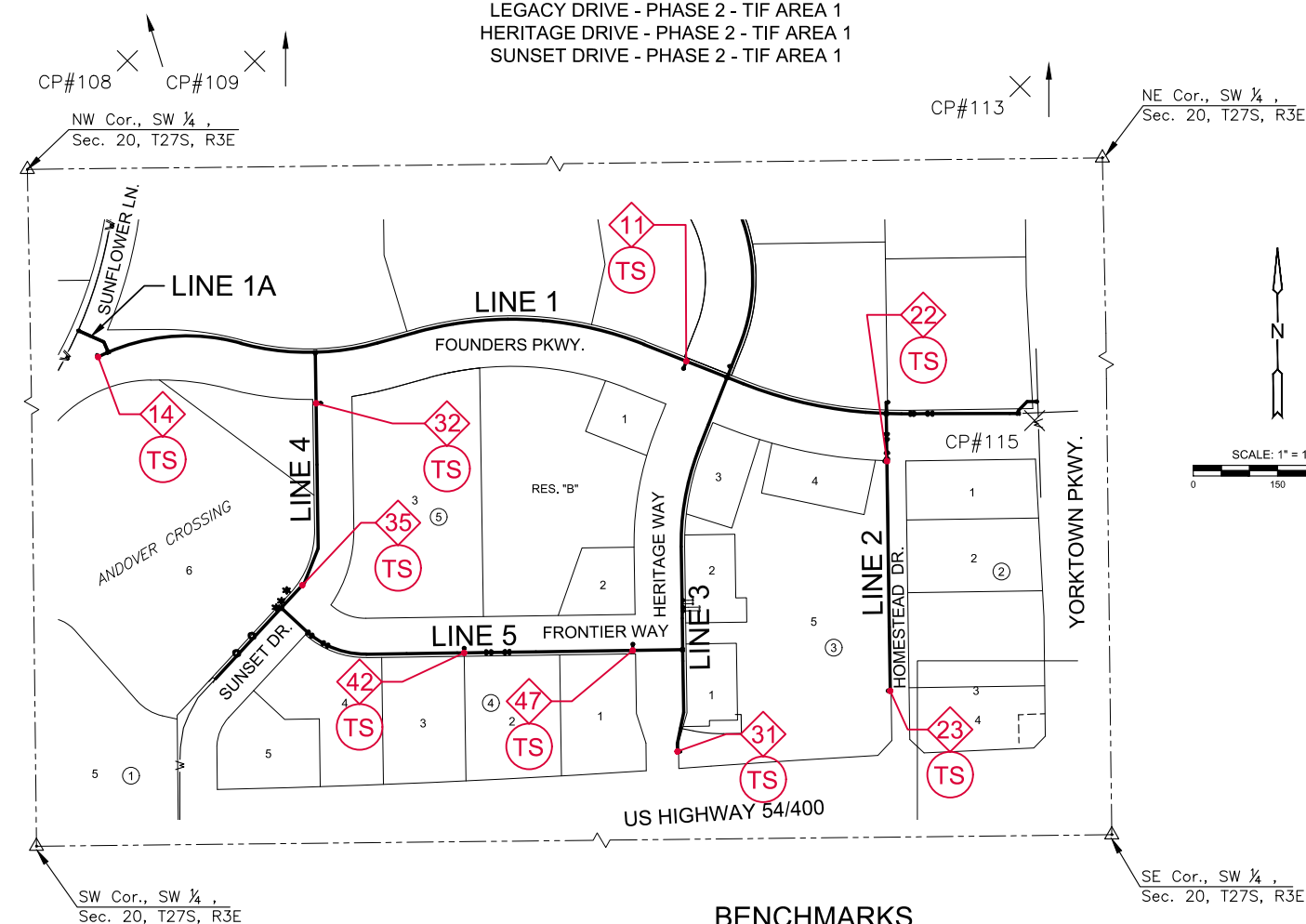
AN ADDITION TO THE CITY OF ANDOVER
BUTLER COUNTY, KANSAS

CITY OF WICHITA PRIVATE PROJECT NO. PPW-2022-003286

ORG CODE 56030970

TIF AGREEMENTS:

- WEST FOUNDERS PARKWAY - PHASE 1 - 2019 PROJECTS
- WEST FOUNDERS PARKWAY - PHASE 2 - TIF AREA 1
- LEGACY DRIVE - PHASE 2 - TIF AREA 1
- HERITAGE DRIVE - PHASE 2 - TIF AREA 1
- SUNSET DRIVE - PHASE 2 - TIF AREA 1



VICINITY MAP

No Scale

INDEX TO DRAWINGS

SHEET NO.	DESCRIPTION
01	TITLE SHEET
02	WATER DETAILS
03	WATER LINE 1
04	WATER LINES 1 & 1A
05	WATER LINE 2
06	WATER LINE 3
07	WATER LINE 4
08	WATER LINE 5
09	EROSION CONTROL
10-14	BMP SHEETS
15	FINAL PLAT

LEGEND

- W — EXISTING WATER
- — — PROPOSED WATER

APPROVED AS NOTED
BY WICHITA PUBLIC WORKS
ENGINEERING DIVISION
& BY WICHITA FIRE DEPARTMENT

Engineering	BEN FERGUSON	03/14/2022
Utilities	GREG LOLLEY	03/14/2022
Fire Department	JOSE OCADIZ	03/14/2022

NOTE TO CONTRACTORS

Public Property:
Inspection and testing for the water line is to be provided by a Licensed Consulting Engineering Firm under contract with the Owner/Developer. Said inspection to be in accordance with the City of Wichita standard construction engineering practices and certified by a Professional Engineer Licensed in the state of Kansas. No work shall be performed in dedicated easements or public rights-of-way by the Contractor without such inspection nor shall any work be commenced without written authorization by the City Engineer. All Construction and Materials shall comply with the City of Wichita Specifications and Standards and Special Provision (on file and available in the City Engineer's office) or on the City's Website.

Private Property:
Installation and testing for the fire protection line is to be performed by a City of Wichita licensed fire protection contractor in accordance with the fire codes as adopted by the City of Wichita. All material and construction practices for the fire protection line shall comply with the fire codes as adopted by the City of Wichita (available from the City of Wichita Fire Department). The contractor shall not commence work without notification and approval of the Wichita Fire Department. Inspection of the fire protection line is to be provided by a licensed Engineering Firm under contract with the Owner/Developer and the Fire Department. The contractor shall not start work until the project inspector is assigned to the project and present on the site. Any work done without inspection will be required to be uncovered for inspection.

An approved copy of these plans signed by City staff is required on-site.

NOTE: ALL LINES TO BE INSTALLED BY OTHERS ARE SUBJECT TO MABCD REVIEW.

NOTE: CONTRACTOR TO VERIFY DEPTH AND LOCATION OF EXISTING UTILITIES PRIOR TO CONSTRUCTION.

MULTI-USE COMMERCIAL PROJECT BEING CONSTRUCTED CONCURRENTLY. COORDINATE CONSTRUCTION ACTIVITIES WITH COMMERCIAL CONTRACTOR.

COMMERCIAL CONTRACTOR
COMPANY: KEY CONSTRUCTION
CONTACT: SCOTT BONEBRAKE - SENIOR PROJECT MANAGER
PHONE: 316-303-4258

AS-BUILT PLANS - APRIL 2023

INSPECTED BY: MIKE VAN DE CREEK, MKEC ENGINEERING, INC.
CONSTRUCTED BY: MCULLOUGH CONSTRUCTION
SUPERVISOR: TERRY STEFONEK
SUPPLIER: PIPE DR18 AWWA C-900 CORE & MAIN (MUELLER); 8 EACH
FIRE HYDRANT:

6" PIPE: 70 LF.
8" PIPE: 2482 LF.
8" DI CL PIPE: 127 LF.
12" PIPE: 1685 LF.
12" DI CL PIPE: 41 LF.

DATUM:
THE HORIZONTAL DATUM IS BASED ON THE KANSAS COORDINATE SYSTEM OF 1983(2011), SOUTH ZONE. COORDINATES SHOWN HAVE BEEN MODIFIED TO THE GROUND USING A COMBINED ADJUSTMENT FACTOR OF 1.0001200144. STATE PLANE COORDINATES CAN BE CALCULATED BY MULTIPLYING THE SHOWN VALUES BY 0.99988.

ALL ELEVATIONS SHOWN ARE BASED ON THE NAVD 88 VERTICAL DATUM.

CP108
N: 1686847.825 E:1708129.189 EL: 1342.89
** IN SQUARE CUT ON S SIDE OF DOUGLAS, SOUTH OF HOUSE 232.

CP109
N: 1686063.055 E:1708603.610 EL: 1332.71
5/8" REBAR WITH RED MKEC CONTROL POINT CAP

CP113
N: 1686310.274 E:1709966.071 EL: 1336.36
** CUT IN CURB RETURN AT NW CORNER OF ENTRANCE TO WEST APPROXIMATELY 600FT SOUTH OF DOUGLAS AND YORKTOWN

CP115
N: 1685088.627 E:1709991.875 EL: 1332.97
** CUT IN CURB RETURN AT NW CORNER OF ENTRANCE TO FOUNDERS PKWY AND YORKTOWN

NOTE:
ALL CONTROL POINTS SHOWN HAVE ELEVATIONS ESTABLISHED USING STANDARD SURVEYING PROCEDURES AND CAN BE USED AS TEMPORARY BENCHMARKS. WHEN USING A CONTROL POINT AS A TEMPORARY BENCHMARK, IT IS RECOMMENDED THAT CROSS-CHECKS BE MADE TO OTHER CONTROL POINTS OR BENCHMARKS TO CONFIRM ELEVATIONS PRIOR TO USE.

NOTE:
WATER LINE VALVES TO BE OPERATED BY CONTRACTOR ONLY IF WATER INSPECTOR IS ON SITE.



WATER DISTRIBUTION SYSTEM IMPROVEMENTS
THE HERITAGE MIXED-USE FIRST
ANDOVER, KANSAS

©2023
MKEC Engineering
All Rights Reserved
www.mkec.com
These drawings and their contents, including, but not limited to, all concepts, designs, & ideas are the exclusive property of MKEC Engineering (MKEC), and may not be used or reproduced in any way without the express consent of MKEC.

TITLE SHEET

PROJECT NO.	PPW-2022-003286	
DATE	MARCH 2022	
SCALE	1"=150'	
DESIGNED	DRAWN	CHECKED
DFL	JWC	KPG

NO.	REVISION	DATE

SHEET NO.
01 OF 15

PROJECT: 201616010265_LIES PROPERTY, 16293 CAUSHTS06 CIVIL/IR/WEST FOUNDERS PARKWAY 16293-06-3201-1/PPF.DWG

DATE: Thursday, April 06, 2023 @ 09:21 AM

STA. 10+08.22, LINE 1=
ST. STA. 27+37.93, 36.6' LT.
1-12X12" DIMJ TEE
2-12" ANCHOR VALVES (E&W)
VALVE BOX ELEV=1333.21 TIE
INTO MIXED-USE WATER
(2021-007311-PPW)

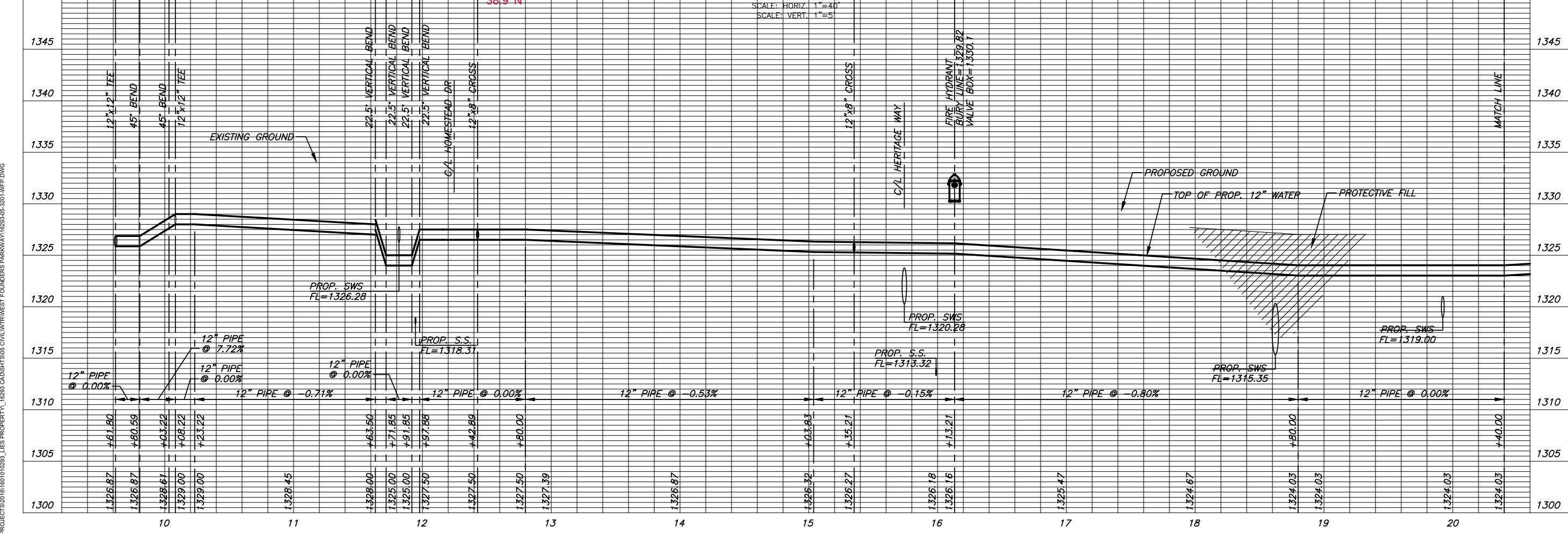
#4 216.0' EAST OF CL
HOMESTEAD ALONG CL
FOUNDERS PKWY & 36.6' N

STA. 9+61.80, LINE 1=
ST. STA. 27+72.98, 57.2' LT.
1-12"x12" TAPPING SLEEVE & VALVE
TO BE FURNISHED & INSTALLED BY
C.O.W. WATER DEPARTMENT.
(CONTRACTOR TO REIMBURSE C.O.W.)
#1 251.4' EAST OF CL HOMESTEAD
ALONG CL FOUNDERS PKW & 57.2' N

NOTE:
CONTRACTOR TO VERIFY LOCATION
AND ELEVATION OF EXISTING WATER
LINE PRIOR TO CONSTRUCTION.

CONTRACTOR TO COORDINATE
CONSTRUCTION ACTIVITIES W/
COMMERCIAL CONTRACTOR. SEE
TITLE SHEET FOR CONTACT
INFORMATION.

1350



PLAN WATER LINE 1
PROFILE WATER LINE 1

SCALE: HORIZ. 1"=40'
SCALE: VERT. 1"=5'

1300

20.00' OF 12" DI CL PIPE
155.28' OF 12" PIPE
27+00
26+00
22.63' OF 12" PIPE
18.79' OF 12" PIPE
YORKTOWN
EXIST. WTR. PKWY
8.5'
FOUNDERS PKWY.
HOMESTEAD DR.
LINE 2
EXISTING GRAVEL ACCESS
LANE. SEE NOTES, THIS SHEET.
292.32' OF 12" PIPE
3
78.00' OF 12" PIPE
HERITAGE WAY
1329.74/TC
1
10' UTIL ESMT & BLDG STBK
RES."B"
3
21+00
PROP SWS
20+00
19+00
18+00
17+00
MATCH LINE 20+40

5.00' OF 12" DI CL PIPE
STA. 11+63.50 TO
STA. 11+71.85, LINE 1=
ST. STA. 25+82.66
TO 25+74.32, 38.5' LT.
2-12" DIMJ 22.5' BENDS
9.03 LF OF 12" DI CL PIPE
UNPLATTED
#5 61.1' EAST OF CL HOMESTEAD
ALONG CL FOUNDERS PKWY & 38.5' N
#6 52.8' EAST OF CL HOMESTEAD
ALONG CL FOUNDERS PKWY & 38.5' N
#7 32.8' EAST OF CL HOMESTEAD
ALONG CL FOUNDERS PKWY & 38.9' N
#8 25.1' EAST OF CL HOMESTEAD
ALONG CL FOUNDERS PKWY & 38.9' N

STA. 11+91.85 TO
STA. 11+97.88, LINE 1=
ST. STA. 25+54.32
TO 25+46.61, 38.9' LT.
2-12" DIMJ 22.5' BENDS
6.53 LF OF 12" DI CL PIPE
#9 20.1' WEST OF CL HOMESTEAD
ALONG CL FOUNDERS PKWY & 39.0' N
STA. 15+35.21, LINE 1=
ST. STA. 10+00.00, LINE 3=
ST. STA. 21+95.71, 39.0' LT.
1-12"x8" DIMJ CROSS
2-12" VALVES
2-8" ANCHOR VALVES
VALVE BOX ELEV=1330.4
#10 39.0' EAST OF THE CL OF HERITAGE
WAY ALONG THE CL OF FOUNDERS
PKWY & 39.0' N
21+17.71 AB
STA. 16+13.21, LINE 1=
ST. STA. 21+95.71, 39.0' LT.
1-FIRE HYDRANT ASSEMBLY
L=12.0'
#11 39.0' WEST OF THE CL OF
HERITAGE WAY ALONG THE CL OF
FOUNDERS PKWY & 39.0' N

STA. 9+80.59 TO
STA. 10+03.22, LINE 1=
ST. STA. 27+54.19, 57.4' LT.
TO 27+37.59, 41.6' LT.
2-12" DIMJ 45' BENDS
#2 232.6' EAST OF CL HOMESTEAD
ALONG CL FOUNDERS PKWY & 57.4' N
#3 216.0' EAST OF CL HOMESTEAD
ALONG CL FOUNDERS PKWY & 41.6' N

21+17.71 AB
STA. 16+13.21, LINE 1=
ST. STA. 21+95.71, 39.0' LT.
1-FIRE HYDRANT ASSEMBLY
L=12.0'
#11 39.0' WEST OF THE CL OF
HERITAGE WAY ALONG THE CL OF
FOUNDERS PKWY & 39.0' N

AS-BUILT PLANS - APRIL 2023

1350



WATER DISTRIBUTION SYSTEM IMPROVEMENTS
THE HERITAGE MIXED-USE FIRST
ANDOVER, KANSAS

©2023
MKEC Engineering
All Rights Reserved
www.mkec.com
These drawings and their contents,
including, but not limited to, all concepts,
designs, & ideas are the exclusive
property of MKEC Engineering (MKEC),
and may not be used or reproduced in any
way without the express consent of MKEC.

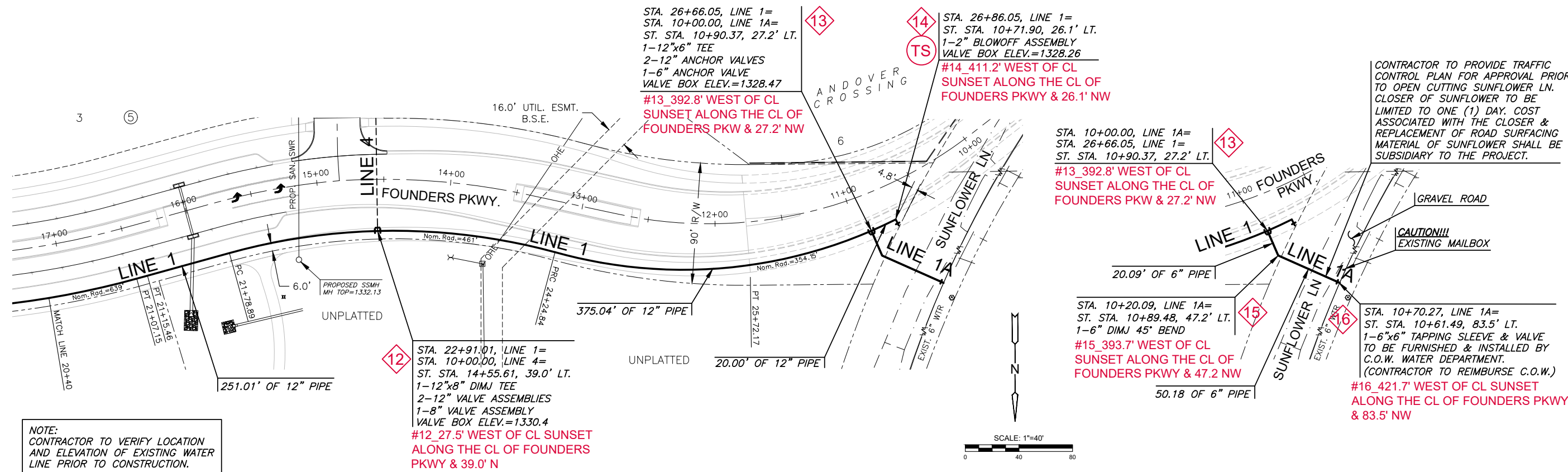
WATER LINE 1

PROJECT NO.	PPW-2022-003286				
DATE	MARCH 2022				
SCALE	1" = 40'				
DESIGNED	DFL	DRAWN	JWC	CHECKED	KPG

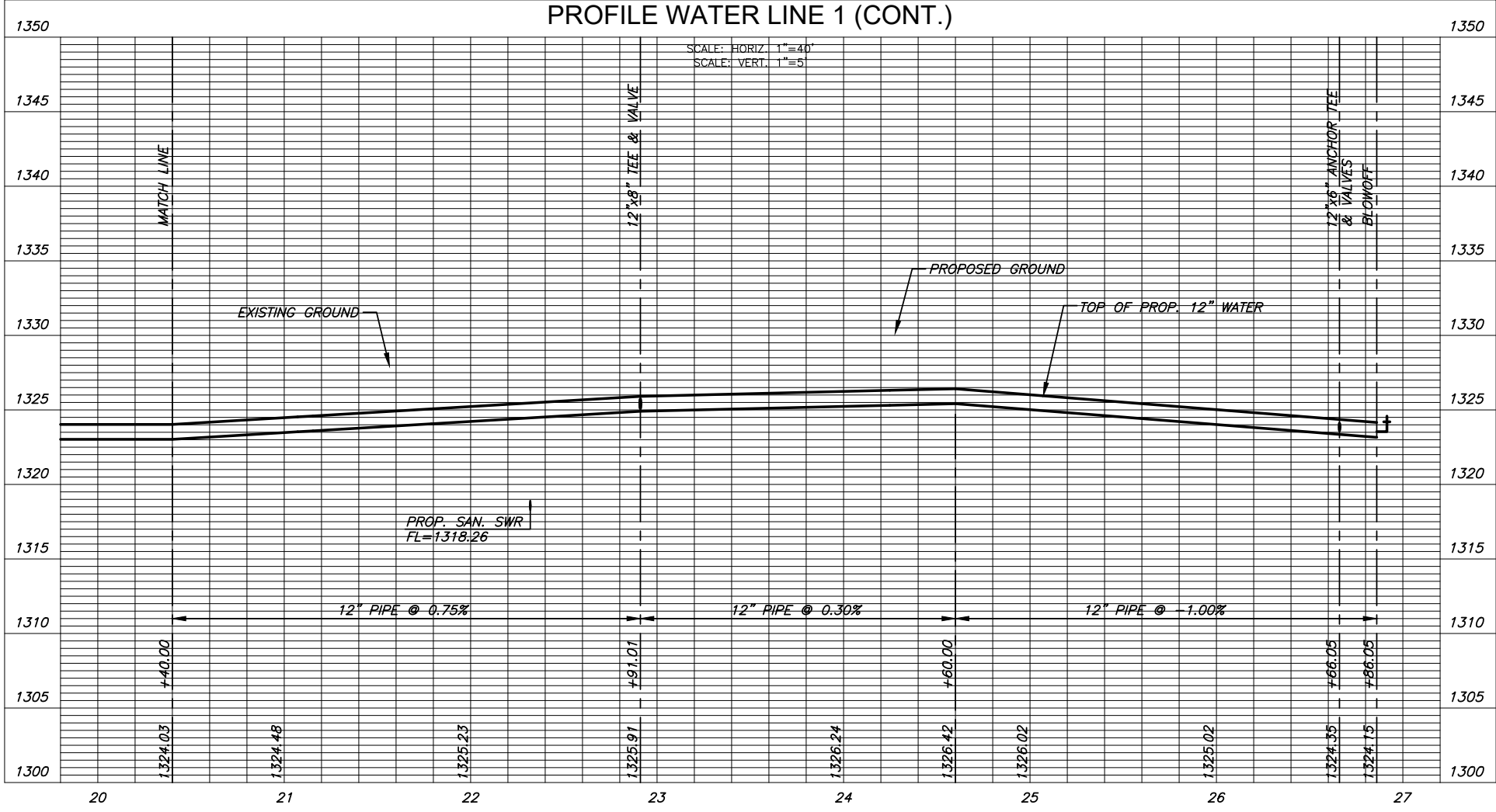
NO.	REVISION	DATE



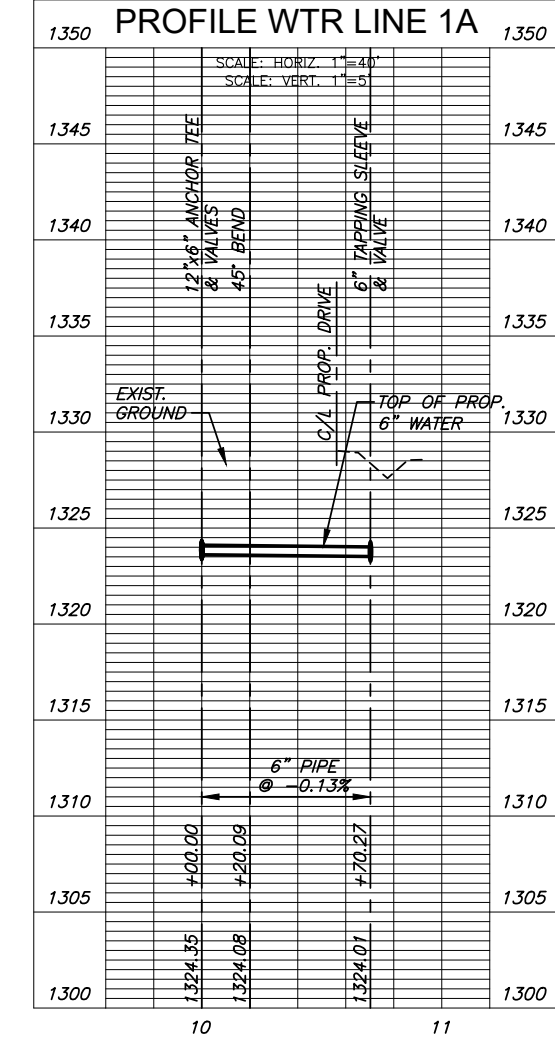
WATER DISTRIBUTION SYSTEM IMPROVEMENTS
THE HERITAGE MIXED-USE FIRST
 ANDOVER, KANSAS



PLAN WATER LINE 1 (CONT.)
PROFILE WATER LINE 1 (CONT.)



PLAN WTR LINE 1A
PROFILE WTR LINE 1A

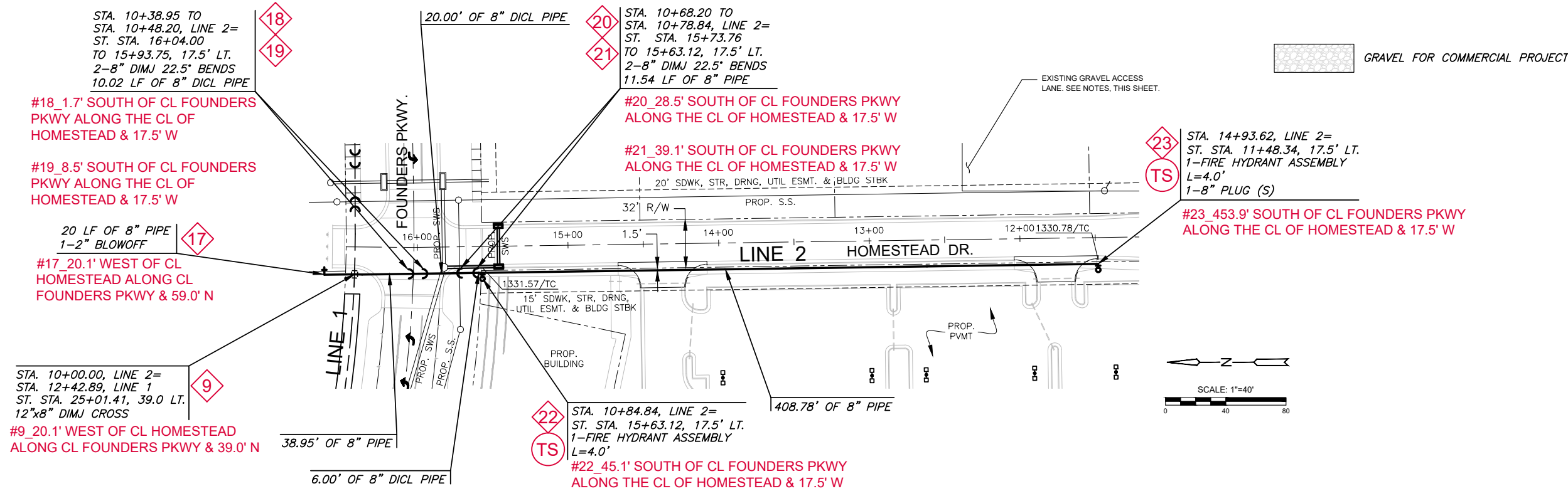


©2023
MKEC Engineering
All Rights Reserved
www.mkec.com
These drawings and their contents, including, but not limited to, all concepts, designs, & ideas are the exclusive property of MKEC Engineering (MKEC), and may not be used or reproduced in any way without the express consent of MKEC.

**WATER LINES
1 & 1A**

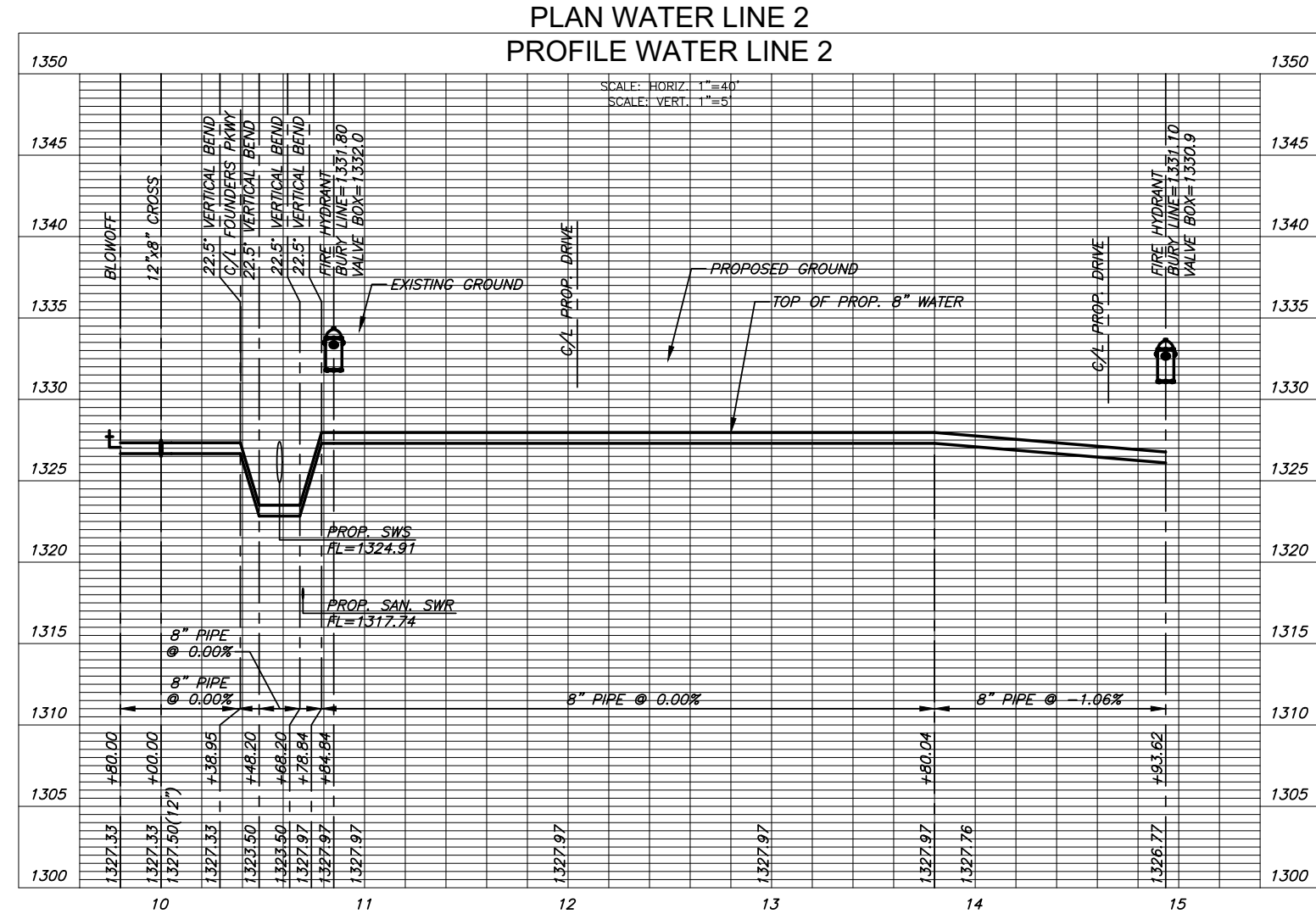
PROJECT NO.	PPW-2022-003286	
DATE	MARCH 2022	
SCALE	1" = 40'	
DESIGNED	DRAWN	CHECKED
DFL	JWC	KPG

NO.	REVISION	DATE



NOTE:
CONTRACTOR TO VERIFY THE DEPTH AND LOCATION OF EXISTING UTILITIES PRIOR TO CONSTRUCTION.

CONTRACTOR TO COORDINATE CONSTRUCTION ACTIVITIES W/ COMMERCIAL CONTRACTOR. SEE TITLE SHEET FOR CONTACT INFORMATION.

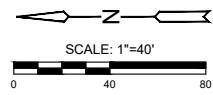
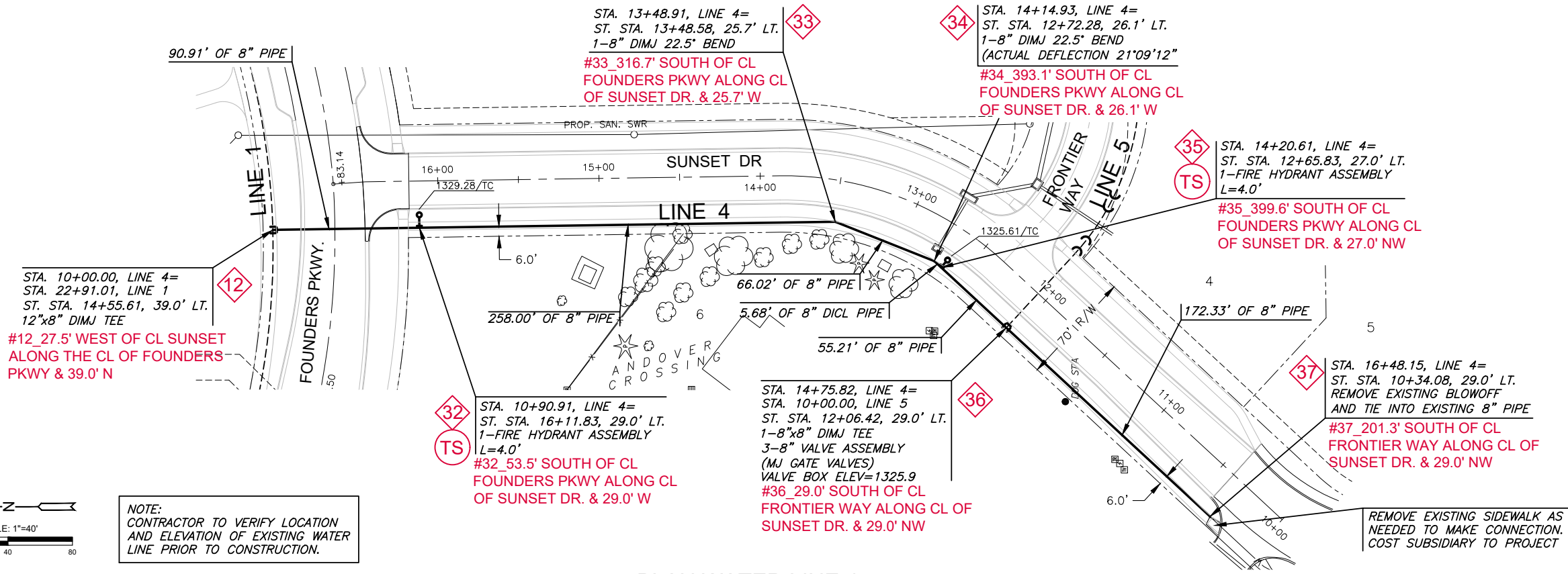


WATER DISTRIBUTION SYSTEM IMPROVEMENTS
THE HERITAGE MIXED-USE FIRST
 ANDOVER, KANSAS

©2023 MKEC Engineering
 All Rights Reserved
 www.mkec.com

These drawings and their contents, including, but not limited to, all concepts, designs, & ideas are the exclusive property of MKEC Engineering (MKEC), and may not be used or reproduced in any way without the express consent of MKEC.

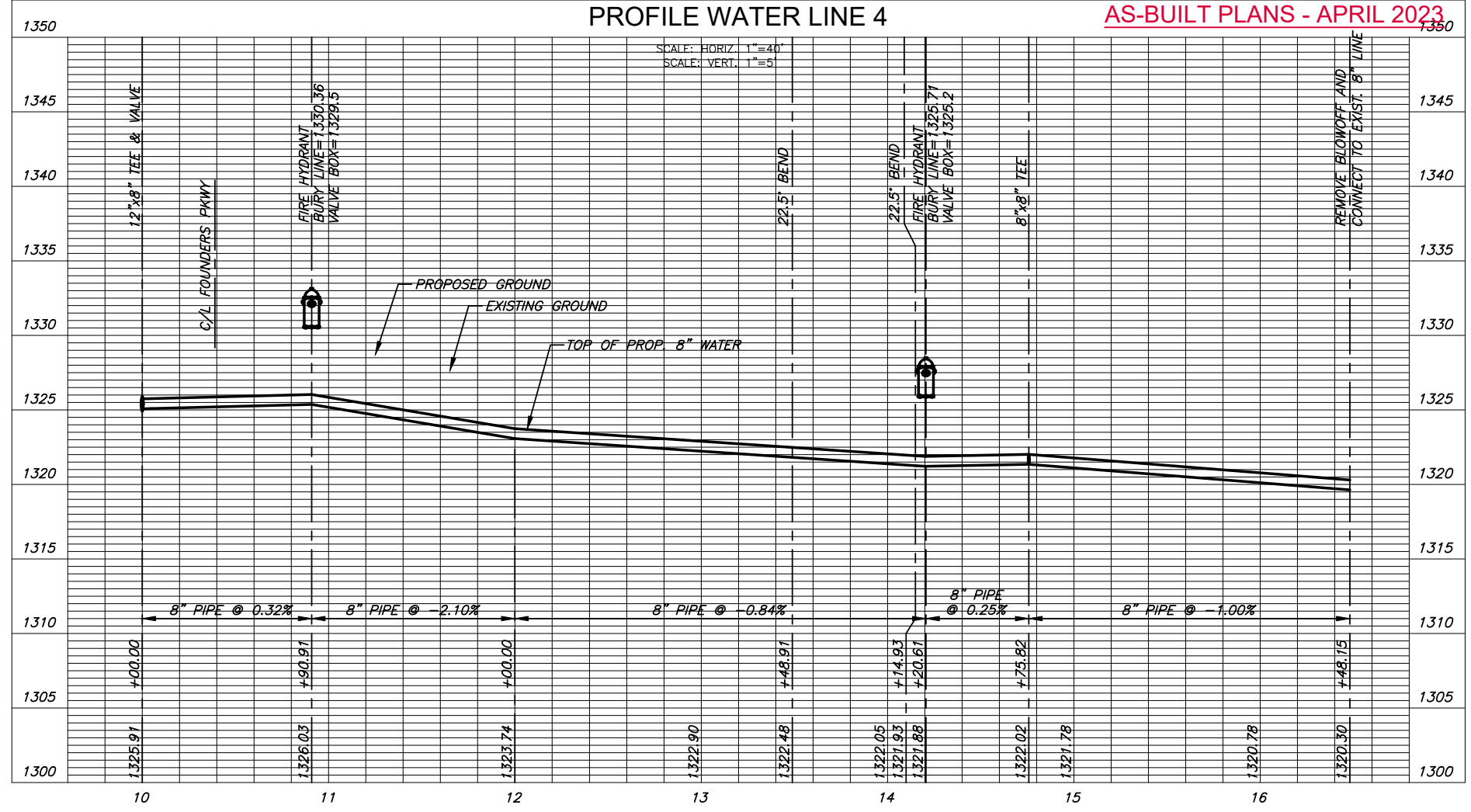
LINE 2		
PROJECT NO.	PPW-2022-003286	
DATE	MARCH 2022	
SCALE	1" = 40'	
DESIGNED	DRAWN	CHECKED
DFL	JWC	KPG
NO.	REVISION	DATE
SHEET NO. 05 OF 15		



NOTE:
CONTRACTOR TO VERIFY LOCATION AND ELEVATION OF EXISTING WATER LINE PRIOR TO CONSTRUCTION.

PLAN WATER LINE 4
PROFILE WATER LINE 4

AS-BUILT PLANS - APRIL 2023





Wichita, KS • 316-684-3000

WATER DISTRIBUTION SYSTEM IMPROVEMENTS
THE HERITAGE MIXED-USE FIRST
ANDOVER, KANSAS

©2023 MKEC Engineering All Rights Reserved www.mkec.com
These drawings and their contents, including, but not limited to, all concepts, designs, & ideas are the exclusive property of MKEC Engineering (MKEC), and may not be used or reproduced in any way without the express consent of MKEC.

LINE 5		
PROJECT NO.	PPW-2022-003286	
DATE	MARCH 2022	
SCALE	1" = 40'	
DESIGNED	DRAWN	CHECKED
DFL	JWC	KPG
NO.	REVISION	DATE
SHEET NO. 08 OF 15		

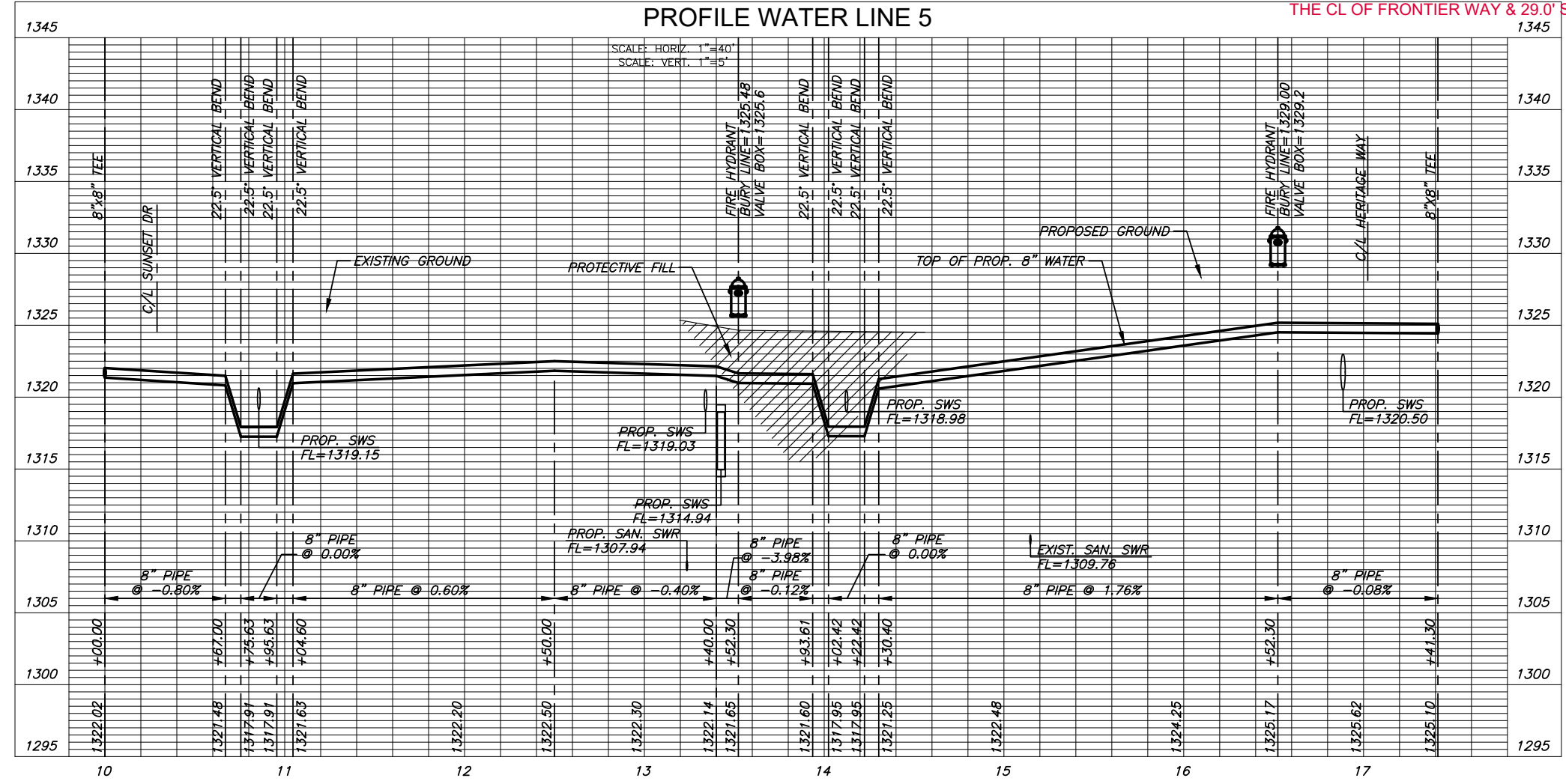
GRAVEL FOR COMMERCIAL PROJECT

AS-BUILT PLANS - APRIL 2023

PLAN WATER LINE 5
PROFILE WATER LINE 5

NOTE:
CONTRACTOR TO VERIFY THE DEPTH AND LOCATION OF EXISTING UTILITIES PRIOR TO CONSTRUCTION.

CONTRACTOR TO COORDINATE CONSTRUCTION ACTIVITIES W/ COMMERCIAL CONTRACTOR. SEE TITLE SHEET FOR CONTACT INFORMATION.



STA. 10+00.00, LINE 5= STA. 14+75.82, LINE 4
ST. STA. 12+06.42, 29.0' LT.
8"x8" DIMJ TEE

#36 29.0' SOUTH OF CL FRONTIER WAY ALONG CL OF SUNSET DR. & 29.0' NW

STA. 10+67.00 TO STA. 10+75.63, LINE 5= ST. STA. 10+36.88 TO 10+43.88, 29.0' RT.
2-8" DIMJ 22.5° BENDS
9.34 LF OF 8" DICL PIPE

#38 36.9' EAST OF CL SUNSET DR. ALONG THE CL OF FRONTIER WAY & 29.0' SW

#39 43.9' EAST OF CL SUNSET DR. ALONG THE CL OF FRONTIER WAY & 29.0' SW

STA. 10+95.63 TO STA. 11+04.60, LINE 5= ST. STA. 10+60.12 TO 10+67.40, 29.0' RT.
2-8" DIMJ 22.5° BENDS
9.71 LF OF 8" DICL PIPE

#40 60.1' EAST OF CL SUNSET DR. ALONG THE CL OF FRONTIER WAY & 29.0' SW

#41 67.4' EAST OF CL SUNSET DR. ALONG THE CL OF FRONTIER WAY & 29.0' SW

STA. 13+52.30, LINE 5= ST. STA. 13+01.20, 29.0' RT.
1-FIRE HYDRANT ASSEMBLY
L=8.0'

#42 301.2' EAST OF CL SUNSET DR. ALONG THE CL OF FRONTIER WAY & 29.0' S

STA. 13+92.64 TO STA. 14+02.42, LINE 5= ST. STA. 13+41.54 TO 13+51.32, 29.0' RT.
2-8" DIMJ 22.5° BENDS
10.58 LF OF 8" DICL PIPE

#43 341.5' EAST OF CL SUNSET DR. ALONG THE CL OF FRONTIER WAY & 29.0' S

#44 351.3' EAST OF CL SUNSET DR. ALONG THE CL OF FRONTIER WAY & 29.0' S

STA. 14+22.42 TO STA. 14+30.40, LINE 5= ST. STA. 13+79.30 TO 13+71.32, 29.0' RT.
2-8" DIMJ 22.5° BENDS
8.63 LF OF 8" DICL PIPE

#45 371.3' EAST OF CL SUNSET DR. ALONG THE CL OF FRONTIER WAY & 29.0' S

#46 379.3' EAST OF CL SUNSET DR. ALONG THE CL OF FRONTIER WAY & 29.0' S

STA. 17+41.30, LINE 5= STA. 14+98.08, LINE 3= ST. STA. 16+90.20, 29.0' RT.
8"x8" DIMJ TEE
VALVE BOX ELEV=1329.8

#28 474.3' SOUTH OF CL FOUNDERS PKWY ALONG THE CL OF HERITAGE WAY & 39.0' E

STA. 16+52.30, LINE 5= ST. STA. 16+01.20, 29.0' RT.
1-FIRE HYDRANT ASSEMBLY
L=11.0'

#47 50.4' WEST OF CL HERITAGE WAY ALONG THE CL OF FRONTIER WAY & 29.0' S

