

GENERAL NOTES:

- The Contractor shall comply with all applicable safety regulations. All construction shall be completed following current City Standard Specifications and Special Provisions.
 - Maintain a minimum of 10-foot horizontal separation between all water lines (mains and services) and all fire hydrants and all sanitary sewer lines (mains, services, and manholes). All separation distances are to be measured from edge-to-edge, at the closest point.
 - Maintain a minimum of 2-foot vertical separation between all water lines (mains and services) and all gravity sanitary sewer lines (mains, services, and manholes) at crossings. All separation distances are to be measured from edge-to-edge, at the closest point.
 - Maintain a minimum of 2-foot vertical separation between all water lines (mains and services) and all pressurized sanitary sewer lines (force mains and services) at crossings. Waterlines must always be placed above pressurized sanitary sewer lines where they cross. All separation distances are to be measured from edge-to-edge, at the closest point.
- Contractor will be required to provide notice to utility companies a minimum of seventy-two (72) hours prior to any excavation, as follows:

Kansas One-Call 687-2470

The Contractor must notify the following in case of an emergency:

AT&T	1-800-246-8464
Black Hills Energy	1-800-694-8989
City of Wichita Water & Sewer	1-316-219-8921
City of Wichita Stormwater	1-316-268-4090
City of Wichita Traffic	1-316-268-4034
Cox Communications	1-888-249-3530
Kansas Gas Service	1-888-482-4950
Energy	1-800-544-4857
- Utility service lines, poles, etc. are to be adjusted as necessary by others prior to construction unless the plans specifically call for their adjustment by the Contractor or unless the plans specifically identify a utility to be adjusted by its owner during construction. Existing utilities and their location, as shown on the plans, represent the best information obtainable for design. The Contractor will be required to work around existing utilities within the right-of-way which do not conflict with proposed construction.
- Rubble from the removal of miscellaneous structures and excess excavation which is to be wasted shall be disposed of on sites to be provided by the Contractor. These sites shall be approved by the Engineer as to suitability, appearance and site location. Locations, in the opinion of the Engineer, that will leave an unsightly appearance will not be approved. All disposal sites must be approved by the Kansas Department of Health and Environment. Material either stockpiled or disposed of in a flood plain will require a Kansas State Board of Agriculture permit. Any material dumped in waters of the United States or wetlands is subject to U.S. Corps of Engineers permitting regulations. Any material buried or stockpiled beyond approved construction limits will require additional archaeological investigations unless buried in a previously approved borrow location.
- Trees and shrubs in public right-of-way which are in direct conflict with proposed new construction shall be removed by the Contractor with the City Engineer's approval. Trees and shrubs which are not in direct conflict with proposed new construction shall be saved and protected from damage.
- The Contractor shall give all property owners and/or tenants of developed property abutting the construction of this project a minimum of ten (10) days notice prior to start of construction.
- The Contractor shall be responsible for preserving property irons. The Contractor will be required to re-establish any property irons which are damaged or destroyed by his construction operations. Such irons shall be re-established by a licensed land surveyor in accordance with state laws.
- The Engineering Division shall field locate water valve one time during construction when requested by the Contractor. It shall be the Contractor's responsibility to preserve such field locations during the construction process. Water valves, valve boxes or fire hydrants damaged during construction shall be repaired by Contractor at his own expense. Valve boxes and water meters within the project limits shall be adjusted to match field grades by the contractor.
- The Contractor shall notify the consultant engineer and Dawnita Reinhardt at 316-650-0740 with the City of Wichita with the anticipated construction start date and notify them of project completion. Staking and inspection for this project will be the responsibility of the Contractor.
- If traffic will be impacted by construction, a traffic control plan must be submitted and approved by the City Traffic Engineer at traffic@wichita.gov before construction can begin. The Contractor shall be responsible for all traffic control measures to facilitate construction. All construction zone markings and signage shall conform to the latest version of Manual on Uniform Traffic Control Devices (MUTCD) as published by the US Dept. of Transportation, Federal Highway Administration. All costs associated with construction markings and signage shall be the Contractors responsibility.
- All elevations shown are NAVD88.
- All areas disturbed during construction that will not be under proposed pavement shall be restored to match existing conditions per City specifications.
- All applicable fees (tap, equity, in lieu of & main benefit) must be paid before any work on this project can commence. Quotes can be obtained on fees by calling 316-268-4555.
- Opening and closing of water valves shall be done slowly to prevent damage to the water distribution system from water hammer. All valves closed by the contractor must be reopened as new construction permits. The project inspector must ascertain that any valve closed by the Contractor is reopened. The contractor will be permitted to operate water valves only when the project inspector assigned to the project is present.
- The Contractor shall lay a Tracer Wire and Set Test Stations along all water pipe installed in accordance with City Specifications and Tracer Wire Detail on detail sheet WL-101, cost is subsidiary to pipe installation.
- The contractor shall provide materials for temporary blowoff of waterlines. Connections to the existing waterline(s) shall be made with clean, swabbed pipe and flushed upon completion of tie-ins.
- Requests for short term water interruptions shall be made to the City Water Distribution Division and will be subject to their approval. The Contractor shall give written notice to any property owner, business, and/or tenants that will have water service interrupted at least 5 days in advance. Such notifications should indicate the time and date that the water will be turned off and when the service will be restored. No business, property owner, and/or tenants shall be without water service for more than 8 hours. Proposed tie in locations which will affect water service to property owners shall be performed during non-peak hours.
- The Contractor must schedule the connections to the existing main with the City such that there is a minimum disruption of service. Connections shall be made during periods of low water usage. The Contractor shall submit his proposed schedule for completing work for City approval at least 10 days prior to beginning construction.
- Deflections at pipe joint or couplings shall not exceed the pipe manufacturers recommended maximum. Where deflections are greater than the maximum allowed, the contractor shall utilize fittings.
- Any existing joint exposed during excavation shall be replaced if within four feet of proposed joint.
- All wet taps shall be installed by the City of Wichita. The Contractor will reimburse the City for tapping fees prior to tap being made. Unless noted on plans.
- The Contractor shall protect from damage and support existing utilities through construction as approved by the utility owner and the Engineer at the contractor's expense.
- Contractor shall limit the extent of trench openings overnight and weekends to less than 50 feet.
- Wichita Fire Department inspections may be scheduled by calling Dawnita Reinhardt at 316-650-0740.
- All existing and proposed erosion control measures including silt fencing, erosion control mat, straw bales, inlet barriers, and const. entrance shall be maintained throughout construction by the contractor and until project is accepted by the City of Wichita. The on-site engineer shall complete weekly reports on the status of erosion control measures. The contractor shall be required to comply with maintenance and/or replacement of erosion control measures as determined by the on-site engineer until project is accepted by City of Wichita. Maintenance and/or replacement of erosion control measures to be paid by L.S. bid item "Maintain Existing BMPs".
- The Contractor shall not begin work on the project until the Project Inspector is assigned and on site. Any work completed without inspection will be required to be uncovered for inspection at the Contractor's expense.

AS BUILT PLANS
 Contractor: McCullough Excavating
 Inspector: Fred Smith, Baughman Co.
 As Builts by: KEK, 10/25/22

WATER DISTRIBUTION SYSTEM to serve **SCHEEL'S - TOWNE EAST SQUARE**

7700 E. KELLOGG DR.
 CITY OF WICHITA, KANSAS

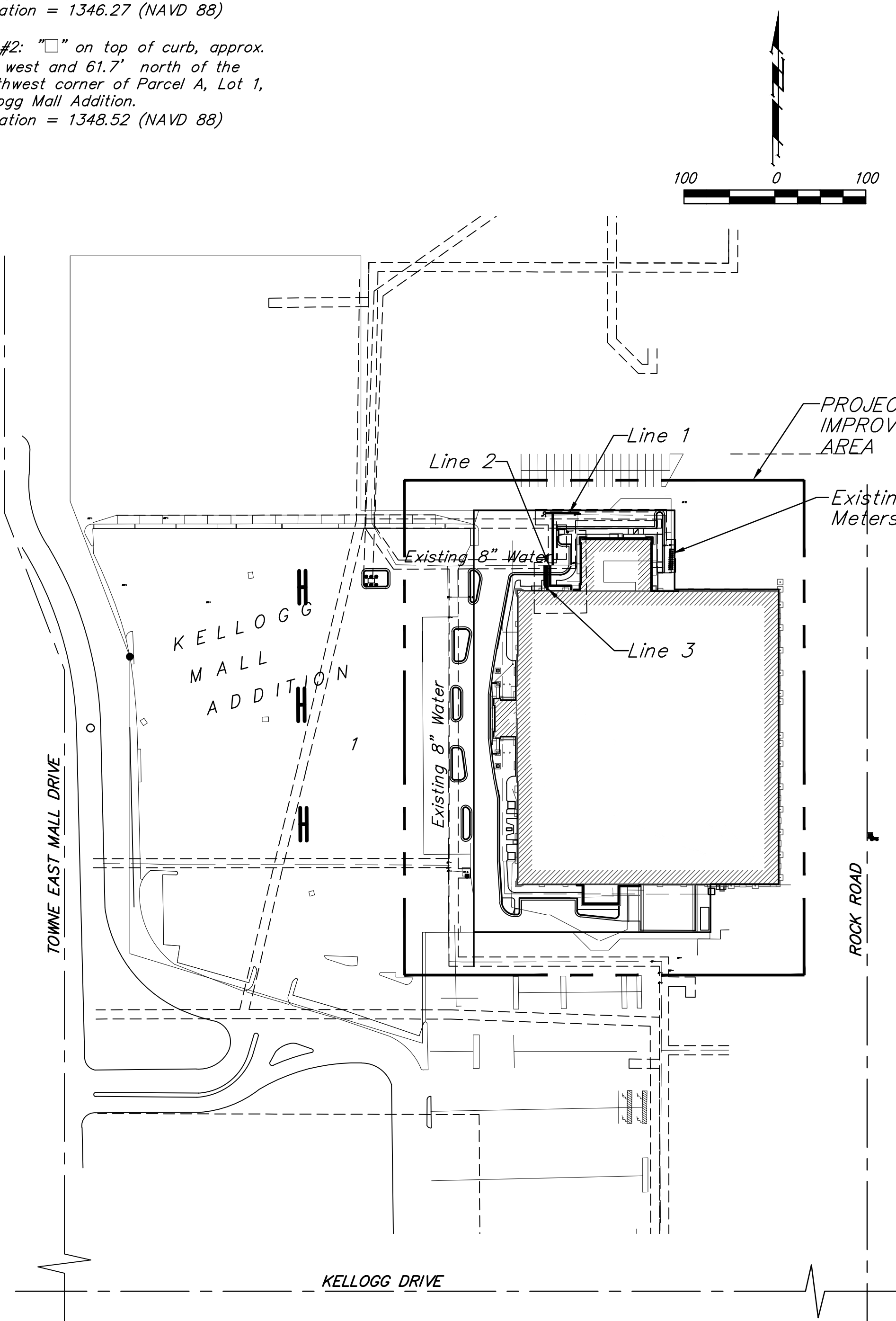
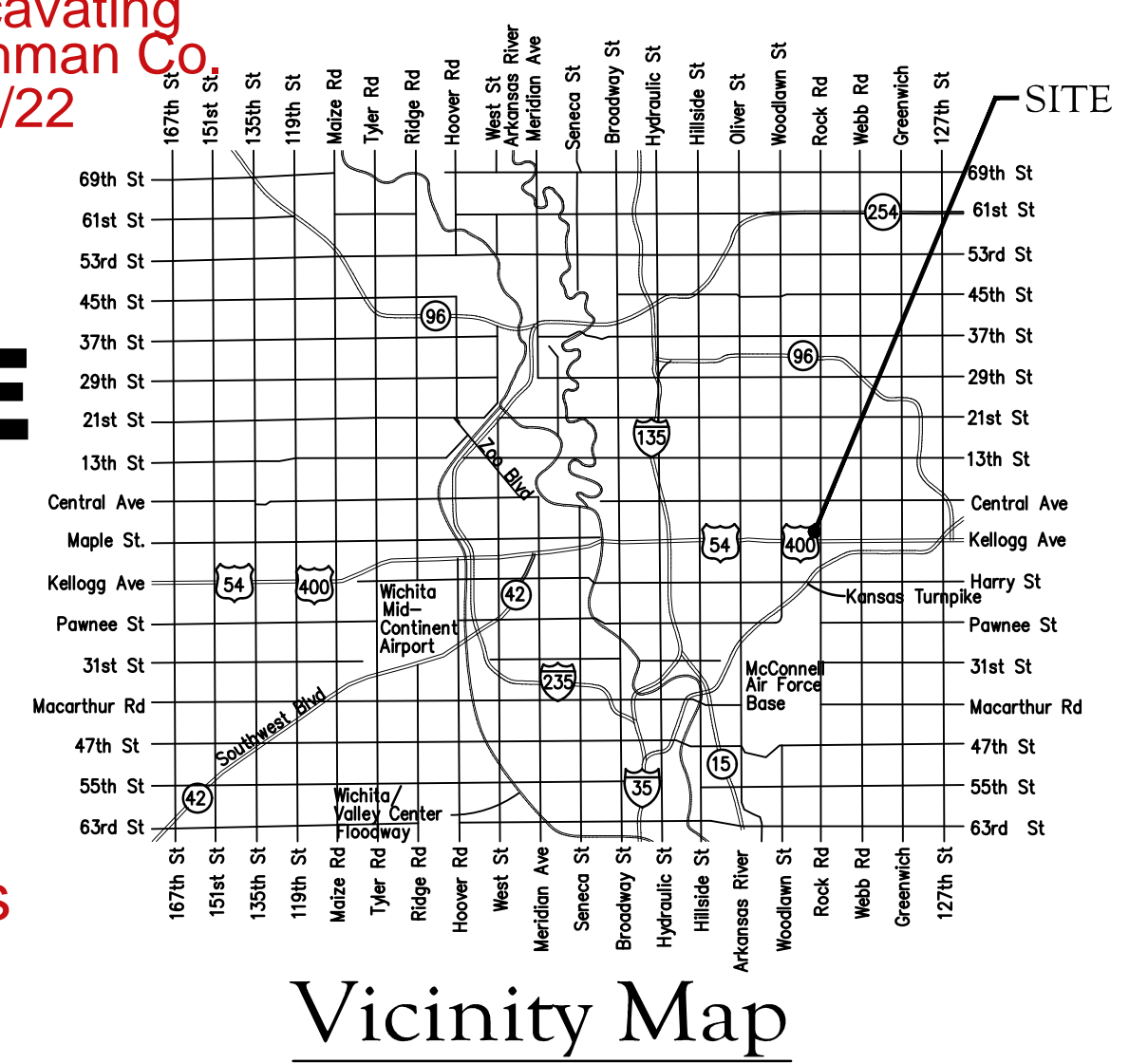
Gary Janzen, P.E. City Engineer
 2022-009797 PPW
 54030980

Mueller Fire Hydrants and Valves

Benchmarks

BM #1: "□" on top of curb, approx. 378.4' west and 160.8' south of the northwest corner of Parcel A, Lot 1, Kellogg Mall Addition.
 Elevation = 1346.27 (NAVD 88)

BM #2: "□" on top of curb, approx. 7.3' west and 61.7' north of the southwest corner of Parcel A, Lot 1, Kellogg Mall Addition.
 Elevation = 1348.52 (NAVD 88)



Sheet Index

Title Sheet	1
Lines 1, 2 & 3	2
Erosion Control/Grading Plan	3
Std. Water Assembly Detail	4
Miscellaneous Water Details	5
Erosion Control BMP Details	6-10
Copy of Plat	11

APPROVED AS NOTED
 BY WICHITA PUBLIC WORKS
 ENGINEERING DIVISION
 & BY WICHITA FIRE DEPARTMENT

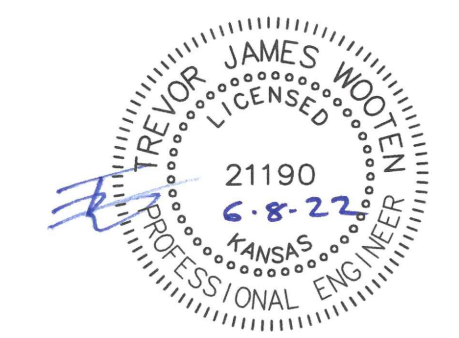
Engineering approved by Shawn Mellies on 06.08.2022
 Utilities approved by Greg Lolley on 06.08.2022
 Fire Dept. approved by Jose Ocádiz on 06.08.2022

NOTE TO CONTRACTORS

Public Property:
 Inspection and testing for the waterline is to be provided by a Licensed Consulting Engineering Firm under contract with the Owner/Developer. Said inspection is to be in accordance with the City of Wichita standard construction engineering practices and certified by a Professional Engineer Licensed in the state of Kansas. No work shall be performed in dedicated easements or public right-of-way by the Contractor without such inspection nor shall any work be commenced without written authorization by City Engineering. All Construction and Materials shall comply with the City of Wichita Specifications and Standards and Special Provisions (on file and available in the City Engineer's Office) or on the City's Website.

Private Property:
 Installation and testing for the fire protection line is to be performed by a City of Wichita licensed fire protection contractor in accordance with the fire codes as adopted by the City of Wichita. All material and construction practices for the fire protection line shall comply with the fire codes as adopted by the City of Wichita (available from the City of Wichita Fire Department). The Contractor shall not commence work without notification and approval of the Wichita Fire Department. Inspection of the fire protection line is to be provided by a licensed Engineering Firm under contract with the Owner/Developer and the Fire Department. The contractor shall not start work until the project inspector is assigned to the project and present on the site. Any work done without inspection will be required to be uncovered for inspection.

An approved copy of these plans signed by City staff are required on-site.



June 8, 2022

BAUGHMAN COMPANY
 315 Ellis St. Wichita, KS 67211 316-262-7271
 BaughmanCo.com

E:\Projects\Kellogg Mall Add (Scheel's) 21-09-ED\01\Engineering\Phase 1\PPW\PPW.dwg

Line not new. Left existing Line. Began new at 0+031.07.

Note: Water Line 1 From Sta 0+00 to Sta. 0+31.07 Was Installed By Others Prior to Construction of This Project.

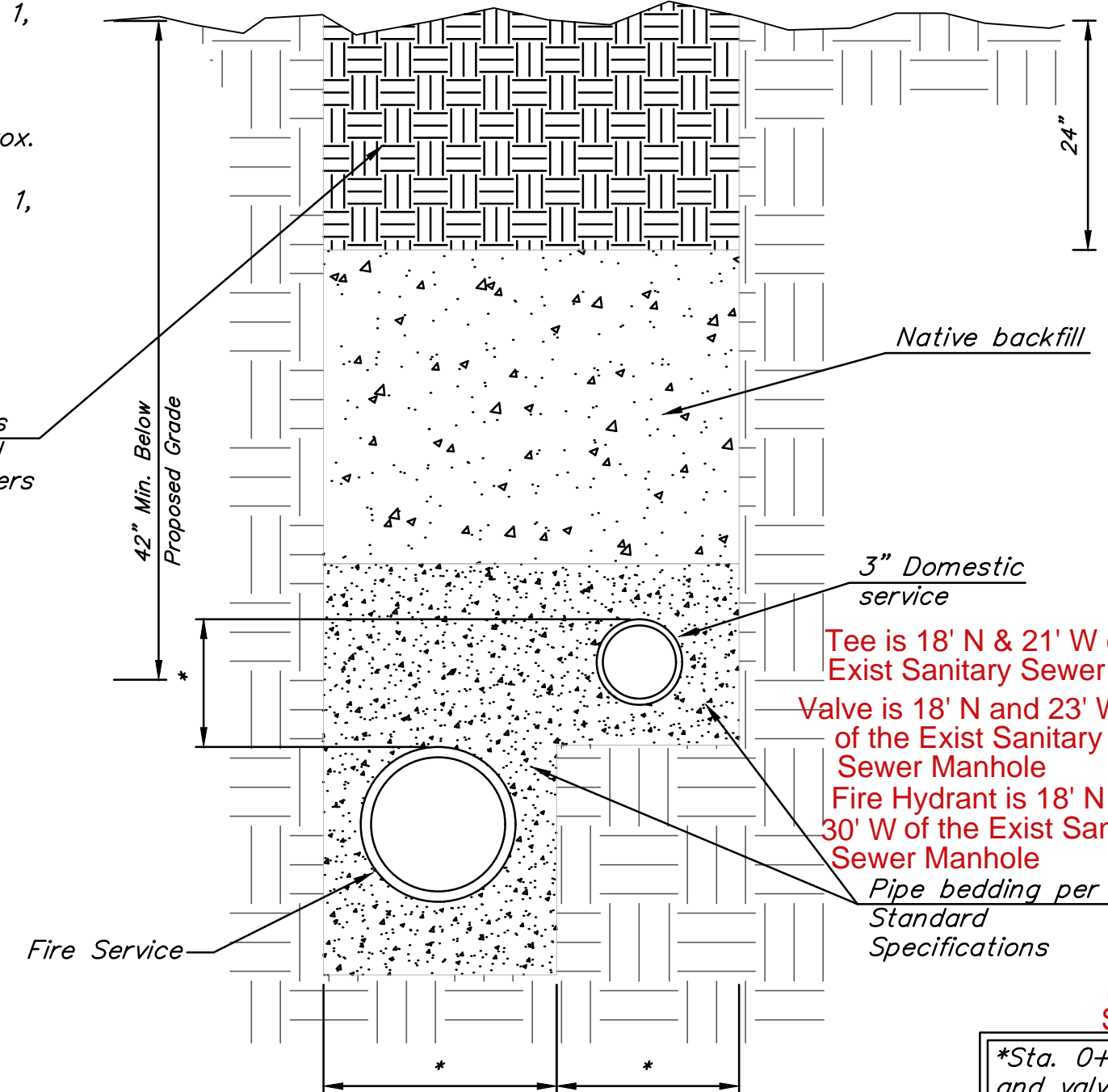
Note: All Water Pipe Used Was Restrained Joint

BENCHMARKS:
 BM #1: "□" on top of curb, approx. 378.4' west and 160.8' south of the northwest corner of Parcel A, Lot 1, Kellogg Mall Addition.
 Elevation = 1346.27 (NAVD 88)

BM #2: "□" on top of curb, approx. 7.3' west and 61.7' north of the southwest corner of Parcel A, Lot 1, Kellogg Mall Addition.
 Elevation = 1348.52 (NAVD 88)

6" Layers of earth free from large clods & stones compacted by mechanical tampers or vibrating tampers.

When fire service and domestic water line installed in same trench, trench shall be compacted per detail, this sheet.



COMBINED TRENCH SECTION & COMPACTION

*TRENCH SIZE AND STAIR STEP SHALL BE BASED ON THRUST BLOCK REQUIREMENTS AGAINST VIRGIN SOIL OR CONTRACTOR MAY OPT TO USE RESTRAINED JOINT PIPE MATERIAL.

Sta. 0+00.00, Line 1
 1 - 8"x6" Tapping Saddle
 1 - 6" Tapping Valve & Valve Box (N)
 1 - 6" CIMJ 45° Bend (V)
 1 - 6" CIMJ 11.25° Bend (V)
 Valve Box Elev. = 1347.80
 N=19,012.94 E=14,894.97

Sta. 0+01.80, Line 1
 1 - 6" CIMJ 90° Bend
 1 - 6" CIMJ RJ 45° Bend (V)
 1 - 6" CIMJ RJ 11.25° Bend (V)
 N=19,014.74 E=14,894.97

Sta. 0+27.07, Line 1
 1 - 6" CIMJ RJ 45° Bend (V)
 N=19,014.74 E=14,869.70

Sta. 0+31.07, Line 1
 1 - 6" CIMJ 45° Bend (V)
 1 - 8"x8" CIMJ Tee (S)
 1 - 8"x6" Reducer (W&E)*
 1 - Fire Hydrant Assy.
 L = 9'

Sta. 0+47.58, Line 1
 1 - 8" CIMJ 45° Bend (V)
 N=18,998.23 E=14,865.70

Sta. 0+52.58, Line 1
 1 - 8" CIMJ RJ 45° Bend (V)
 N=18,993.23 E=14,865.70

Sta. 0+64.58, Line 1
 1 - 8" CIMJ RJ 45° Bend (V)
 N=18,981.23 E=14,865.70

Sta. 0+88.55, End Line 1
 1 - 8"x8" Tapping Saddle & Valve Box (N)
 Valve Box Elev. = 1348.20
 N=18,957.26 E=14,865.70

Sta. 0+45.51, Line 2
 1 - 3" CIMJ 90° Bend
 N=18,934.80 E=14,885.76

Sta. 0+50.51, End Line 2
 End water line at building
 1 - 2" Temporary Blowoff Assy. for water testing.
 N=18,929.80 E=14,885.76

Sta. 0+22.44, Line 2
 1 - 3" CIMJ 90° Bend
 N=18,934.80 E=14,862.69

Sta. 0+28.44, End Line 3
 Extend the line 1' into the building. End in a blind flange with 2" tap for testing.
 Remove upon acceptance.
 N=18,928.79 E=14,859.72

Sta. 0+03.06, Line 2
 1 - 2" Meter
 1 - 3"x2" Reducer
 Transition to 3" service line after meter (at 2" pigtail connection)
 Meter Top Elev. = 1348.20
 N=18,954.19 E=14,862.58

Sta. 0+00.00, Begin Line 2
 1 - 8"x4" Tapping Saddle
 1 - 4" Tapping Valve & Valve Box (S)
 1 - 4"x2" CIMJ Reducer (S)
 Valve Box Elev. = 1348.20
 N=18,957.24 E=14,862.59

Sta. 0+00.00, Begin Line 3
 1 - 8"x8" Tapping Saddle
 1 - 8" Tapping Valve & Valve Box (S)
 Valve Box Elev. = 1348.20
 N=18,957.23 E=14,859.59

Tee is 35' S and 21' W of the Exist Sanitary Sewer Manhole
 Valve is 33' S and 21' W of the Exist Sanitary Sewer Manhole

Tee is 35' S and 18' W of the Exist Sanitary Sewer Manhole
 Valve is 37' S and 18' W of the Exist Sanitary Sewer Manhole

Tee is 34' S and 27' W of the Exist Sanitary Sewer Manhole
 Valve is 36' S and 27' W of the Exist Sanitary Sewer Manhole

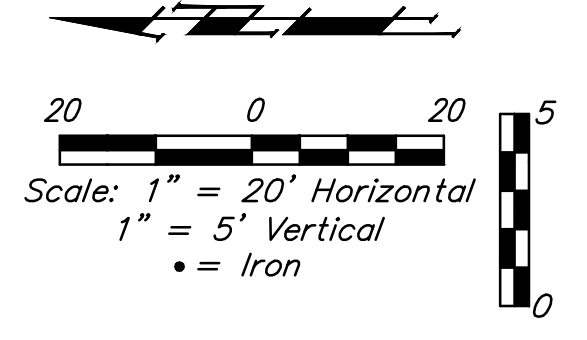
Existing water meters located on east side of building (see cover sheet). Contractor to coordinate with shopping center owners regarding water outages. Contractor to schedule outages outside of regular mall hours.

Contractor to verify depth and location of existing utilities. Contractor to relocate any existing utilities as necessary for construction.

Contact utility companies 3 weeks prior to construction to coordinate temporary removal/replacement. Heide Bryan, Evergy, (316) 261-6354

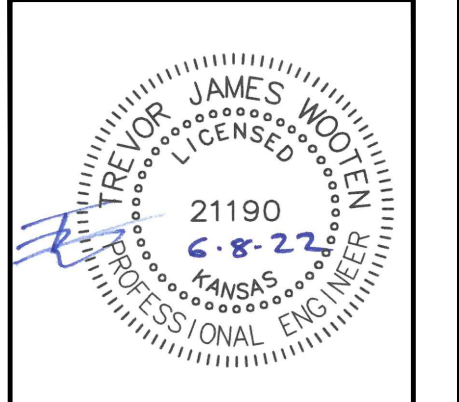
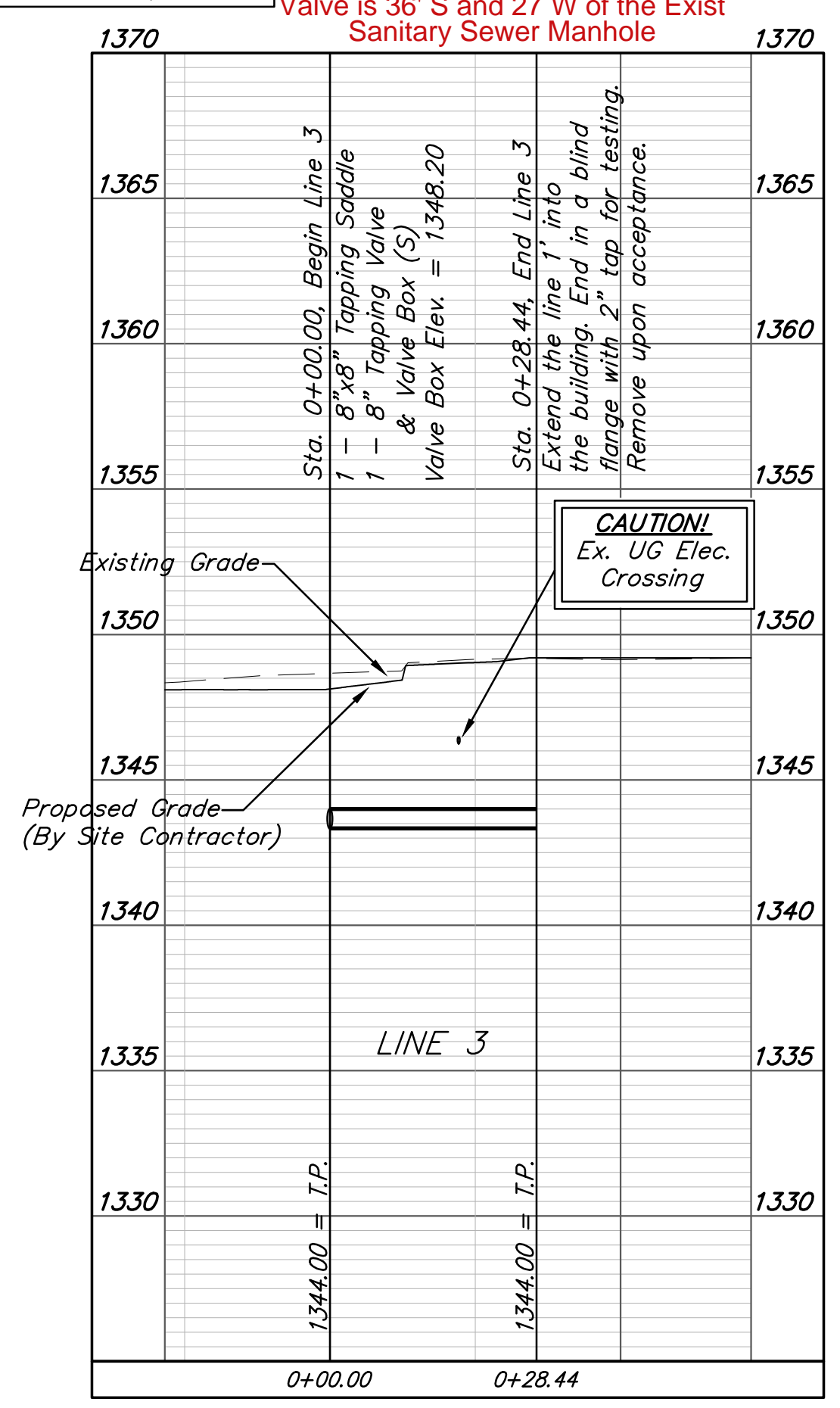
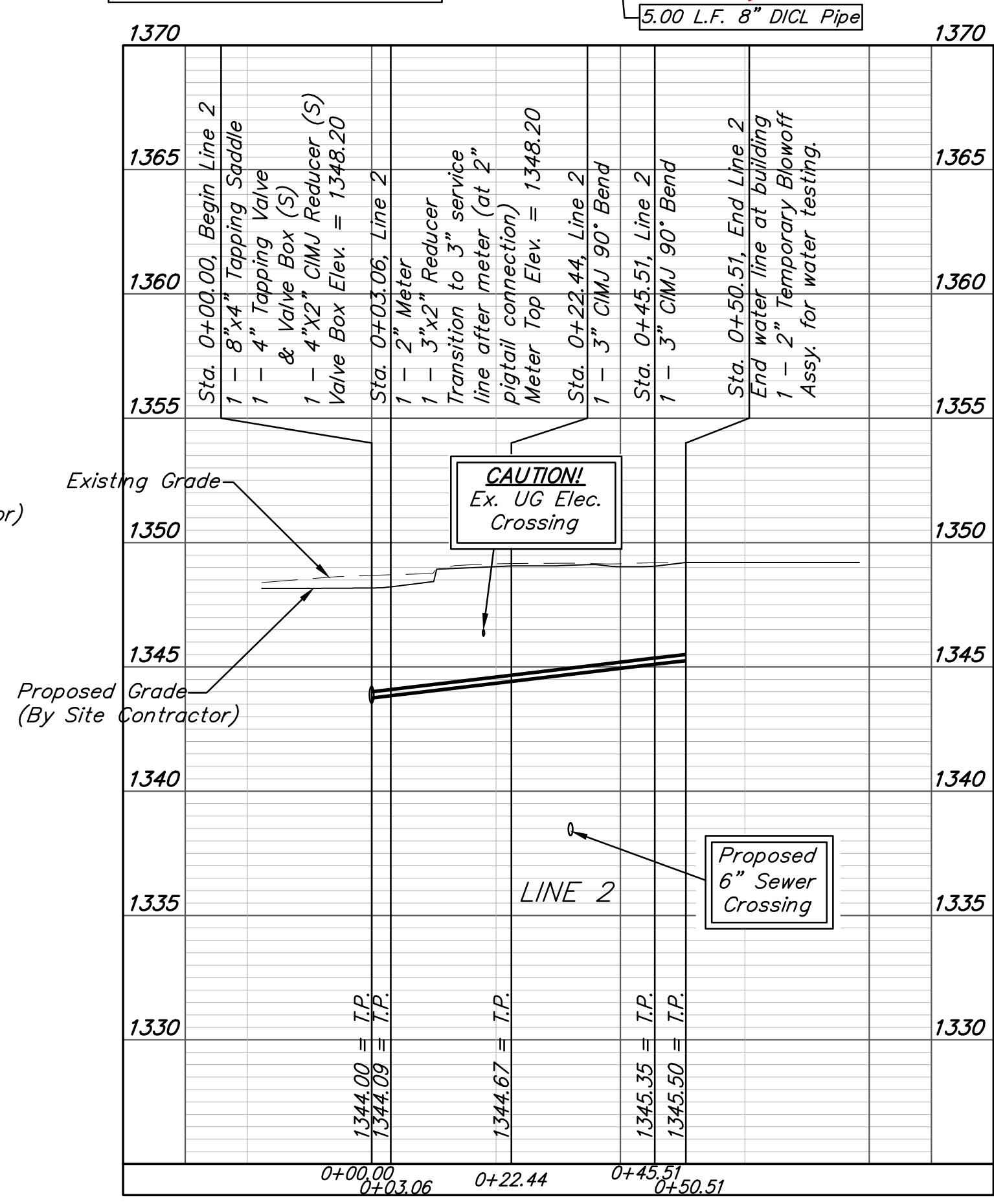
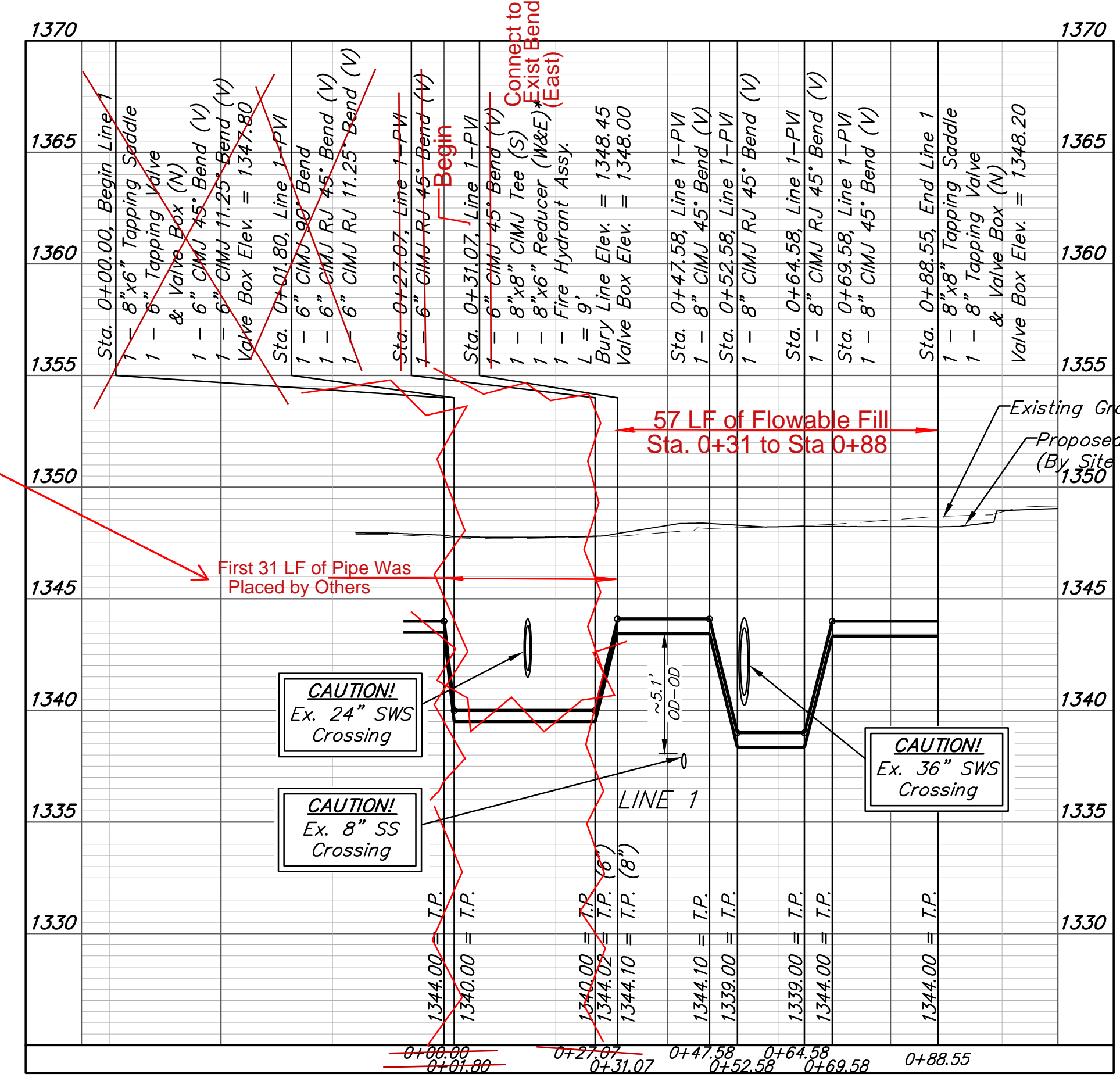
Contractor to maintain a minimum of 10' of horizontal separation (O.D.-O.D.) between sanitary sewer and water line.

Contractor to maintain a minimum of 2' of vertical separation (O.D.-O.D.) between sanitary sewer and water line.



Line not new. Left existing Line, and Began at 0+31.07 with new.

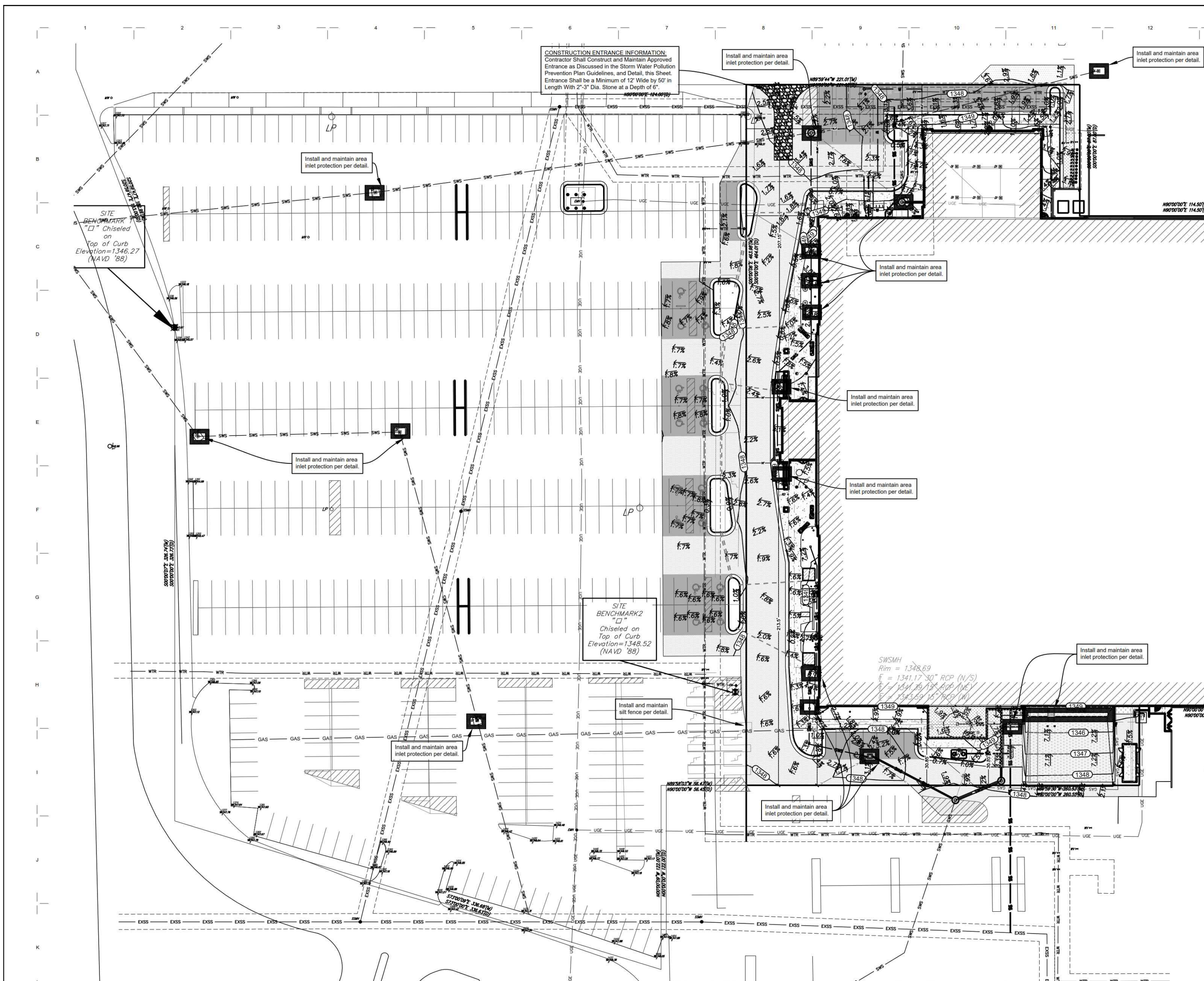
DEPTH UNKNOWN
 Contractor to Verify Depth & Location of Existing Water Line Prior to Construction.



BAUGHMAN COMPANY
 315 Ellis St.
 Wichita, KS 67211
 316-262-7271
 BaughmanCo.com

SCHLEE'S TOWNE EAST SQUARE
LINES 1, 2 & 3
 WATER DISTRIBUTION SYSTEM
 PROJECT NUMBER: 21-09-E010
 DESIGN: KH DRAWN: TMS
 DATE: June 8, 2022
 SHEET OF 11
2 11

File: E:\Projects\Kellogg Mall Add (Scheels)_21-09-E010\Engineering\Phase 1\PPW\PPW.dwg



LEGAL DESCRIPTION

Parcel A, Lot 1, Kellogg Mall Addition, Wichita, Sedgewick County, KS 67207

SITE INFORMATION

Total Area: ±141,735.4 sq. ft. (3.25 acres)
 Disturbed Area: ±66,000.7 sq. ft. (1.52 acres)
 Impervious Area, pre-const: ±141,735.4 sq. ft. (3.25 acres)
 Impervious Area, post-const: ±135,489.1 sq. ft. (3.11 acres)

BENCHMARKS

Site Benchmark - 1
 Square cut on top of curb, approx. 378.4' west and 160.8' south of the northwest corner of Parcel A, Lot 1, Kellogg Mall Addition, Wichita, Sedgewick County, KS 67207
 Elevation = 1346.27 (NAVD 88)

Site Benchmark - 2
 Square cut on top of curb, approx. 7.3' west and 61.7' north of the southwest corner of Parcel A, Lot 1, Kellogg Mall Addition, Wichita, Sedgewick County, KS 67207
 Elevation = 1348.52 (NAVD 88)

KANSAS ONE CALL

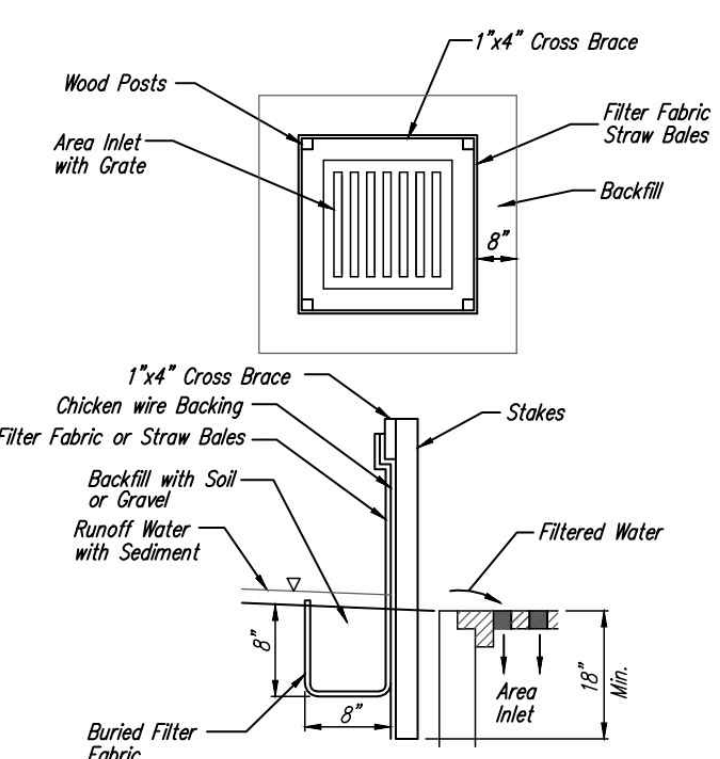
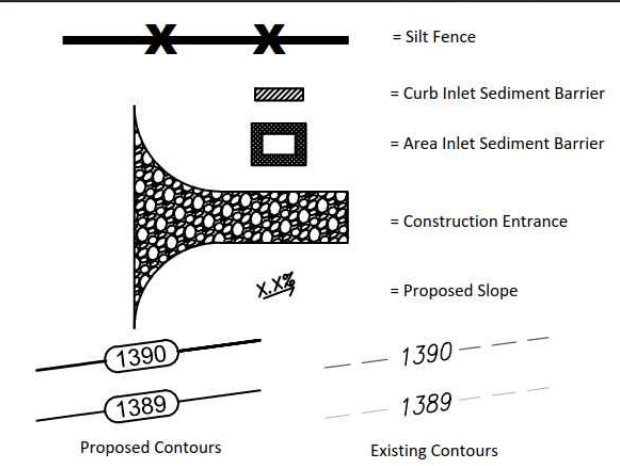
Contractor shall be required to provide notice to Kansas One Call at 287-2470 a minimum of three (3) working days prior to any excavation or work adjacent to utilities.
 Kansas One Call 1-800-DIG-SAFE

UTILITY CONTACTS

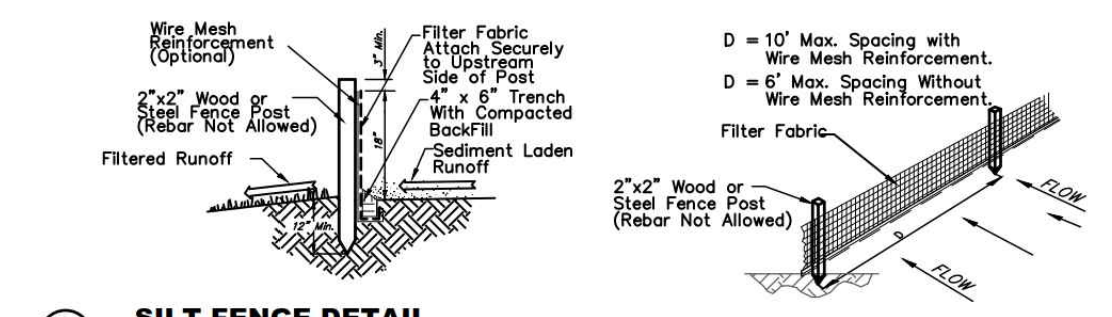
The Contractor must notify the following in case of an emergency:

Kansas Gas Service (Gas).....	1-888-482-4950
Black Hills Energy (Gas).....	1-800-303-0357
Evergy (Electric).....	383-8650
Cox Communications (Telecommunication).....	262-4270
AT&T (Telecommunication).....	268-2759
City of Wichita Water Dept. (Water).....	268-4563
or 268-4908	
City of Wichita Sewer Maint. (San. Sewer).....	268-4024
or 262-6000	
City of Wichita Storm Sewer Maint. (Storm Sewer).....	268-4090
City of Wichita Traffic Maint. (Traf. Control).....	268-4034
or 268-4203	
Conoco Pipeline Co. (Petroleum).....	1-800-231-2551
Williams Pipeline Co. (Petroleum).....	529-6600
or 1-800-324-9696	
Phillips Pipeline Co. (Petroleum).....	1-800-766-8230

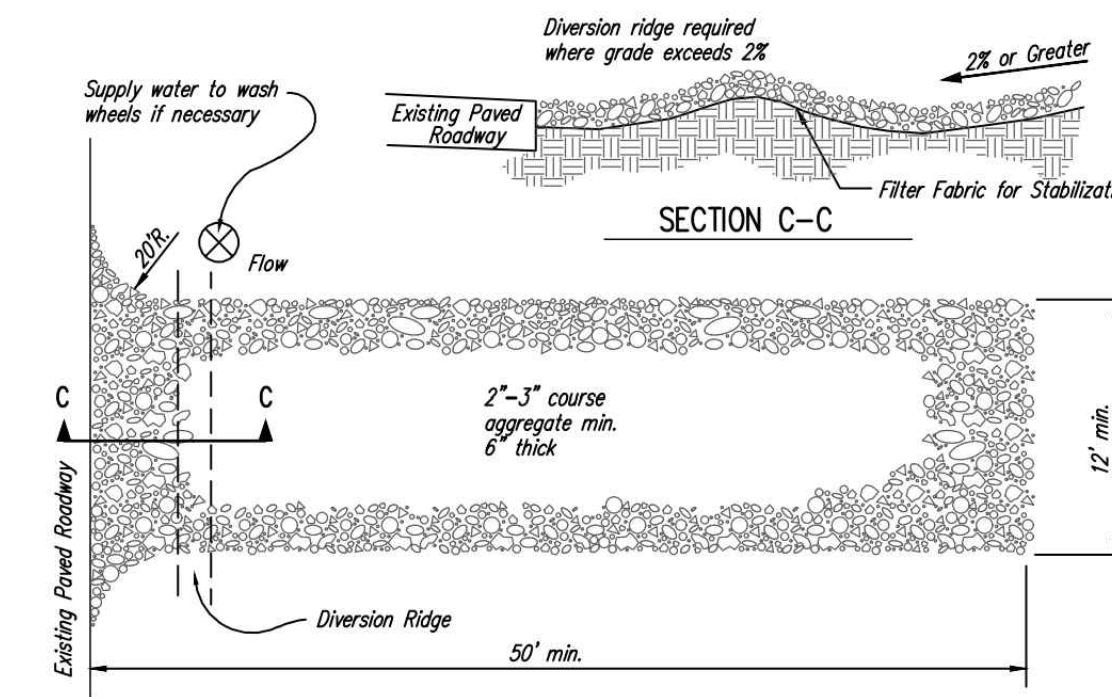
EROSION CONTROL LEGEND



3 INLET PROTECTION FOR AREA INLETS
 (INLET PROTECTION: SILT FENCE OR STRAW BALES)



2 SILT FENCE DETAIL
 NOT TO SCALE



1 STABILIZED CONSTRUCTION ENTRANCE
 NOT TO SCALE



TOWNE EAST SQUARE

7700 East Kellogg Drive WICHITA, KANSAS

BUILDING SITE

05 MAY 2022 PR 014 / MABCD Comments

EROSION CONTROL NOTES

- No land clearing or grading shall begin until all applicable erosion control measures have been installed. This project is subject to this SWPP Plan, if applicable. The Contractor shall comply with any unusual requirements as necessary for the site to be in compliance during construction, per this plan and per City and State specifications (See #11).
- All exposed areas shall be seeded as specified within 14 days of final grading. Seed is to include straw mulch, crimped in place per industry standards.
- Should construction stop for longer than 14 days, the site shall be seeded as specified.
- Maintain erosion control measures after each rain and at least once a week.
- This plan shall not be considered all inclusive as the contractor shall take all necessary precautions to prevent soil sediment from leaving the site.
- Contractor shall comply with all state and local ordinances that apply.
- Additional erosion and sediment control measures will be installed if deemed necessary by on site inspection.
- Land disturbing activities shall not commence until approval to do so has been received by governing authorities.
- If installation of storm drainage system should be interrupted by weather or nightfall, the pipe ends shall be covered with filter fabric.
- See Landscape Plan for ground treatments in all disturbed areas beyond impervious surfaces.
- This Erosion Control Plan should be in job trailer and/or on site at all times. The Contractor is responsible for any needed changes, updates or maintenance to BMP's on site. This plan may change and updates need to be recorded and documented on the plan. This plan is a flexible plan, due to changing site conditions and weather. Please inform Landscape Architect and/or Engineer of changes to plan.
- ANY substitutions for the sediment control devices shown, must be approved by the Landscape Architect and/or Engineer prior to any uses on site.
- If site disturbance is over 1 acre, an NPDES Permit Application has been submitted for this property and a copy of this application must be kept at the job site for the duration of the construction process.

EROSION CONTROL PLAN
 SCALE 30' = 1"

FOR REFERENCE ONLY NOT TO SCALE

- NOTES:
- THE ENTRANCE SHALL BE MAINTAINED IN A CONDITION THAT WILL PREVENT TRACKING OR FLOWING OF SEDIMENT ONTO PUBLIC RIGHTS-OF-WAY. THIS MAY REQUIRE TOP DRESSING, REPAIR AND/OR CLEANOUT OF ANY MEASURES USED TO TRAP SEDIMENT.
 - WHEN NECESSARY, WHEELS SHALL BE CLEANED PRIOR TO ENTRANCE ONTO PUBLIC RIGHT-OF-WAY.
 - WHEN WASHING IS REQUIRED, IT SHALL BE DONE ON AN AREA STABILIZED WITH CRUSHED STONE THAT DRAINS INTO AN APPROVED SEDIMENT TRAP OR SEDIMENT BASIN, AS SHOWN ABOVE.
 - DRIVE ENTRANCES ONTO RESIDENTIAL LOTS WILL NOT BE REQUIRED TO HAVE THE SEDIMENT BARRIER SHOWN, BUT WHEEL WASHING MAY BE REQUIRED IF STABILIZED ENTRANCE IS NOT SUFFICIENT TO KEEP MUD FROM BEING TRACKED ONTO ADJACENT STREET. ENTRANCE SHALL EXTEND FROM BACK OF CURB TO DWELLING.



C3.0

BAUGHMAN COMPANY
 315 Ellis St.
 Wichita, KS 67211
 316-262-7271
 BaughmanCo.com

SCHEEL'S
 TOWNE EAST SQUARE

EROSION CONTROL PLAN

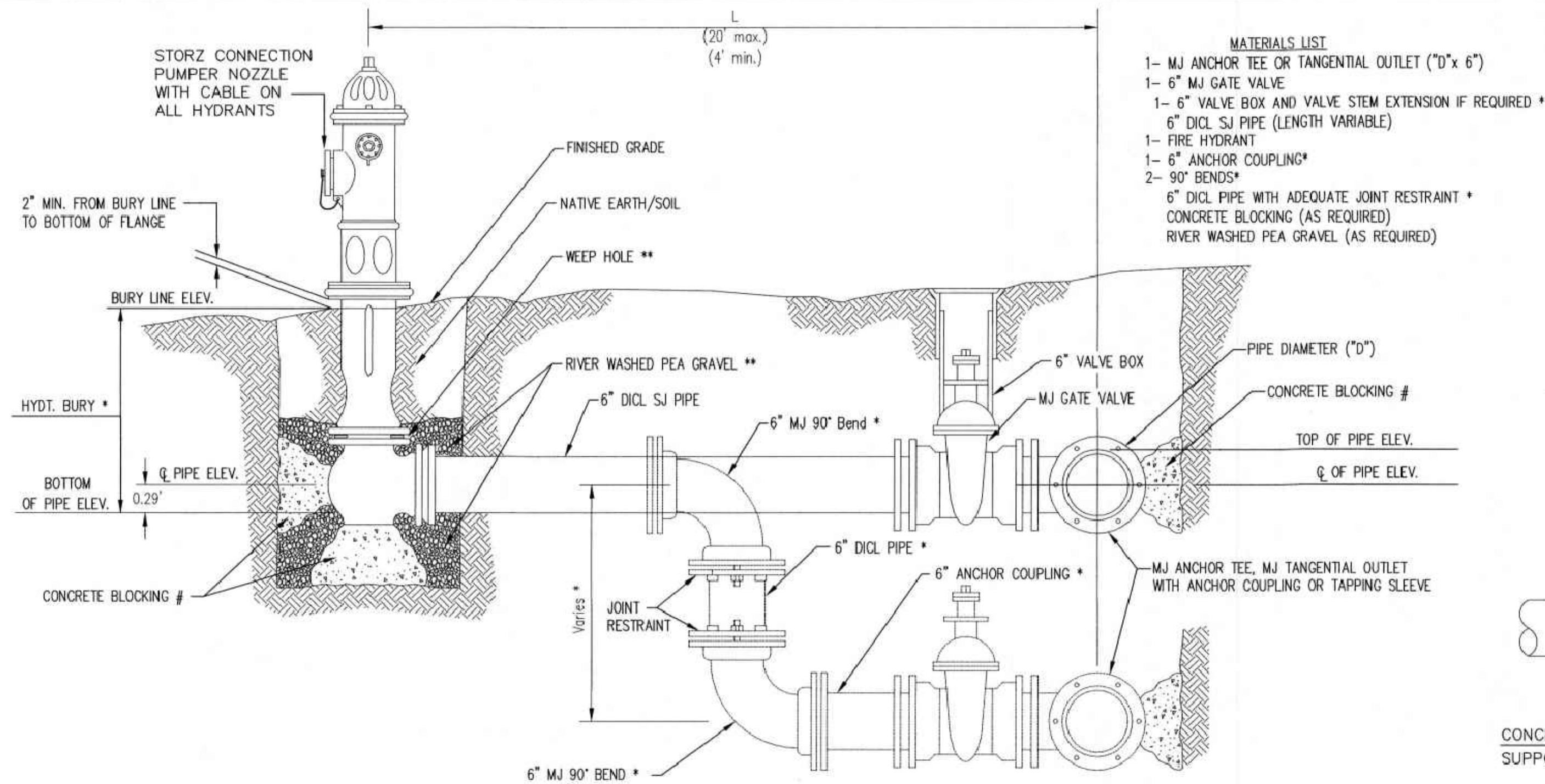
WATER DISTRIBUTION SYSTEM

PROJECT NUMBER:
 21-09-E010

DESIGN: DRAWN:
 DATE: May 5, 2022

SHEET 3 OF 11

File: E:\Projects\Kellogg Mall Add (Scheels)\21-09-E010\Engineering\Phase 1\PPW\PPW.dwg



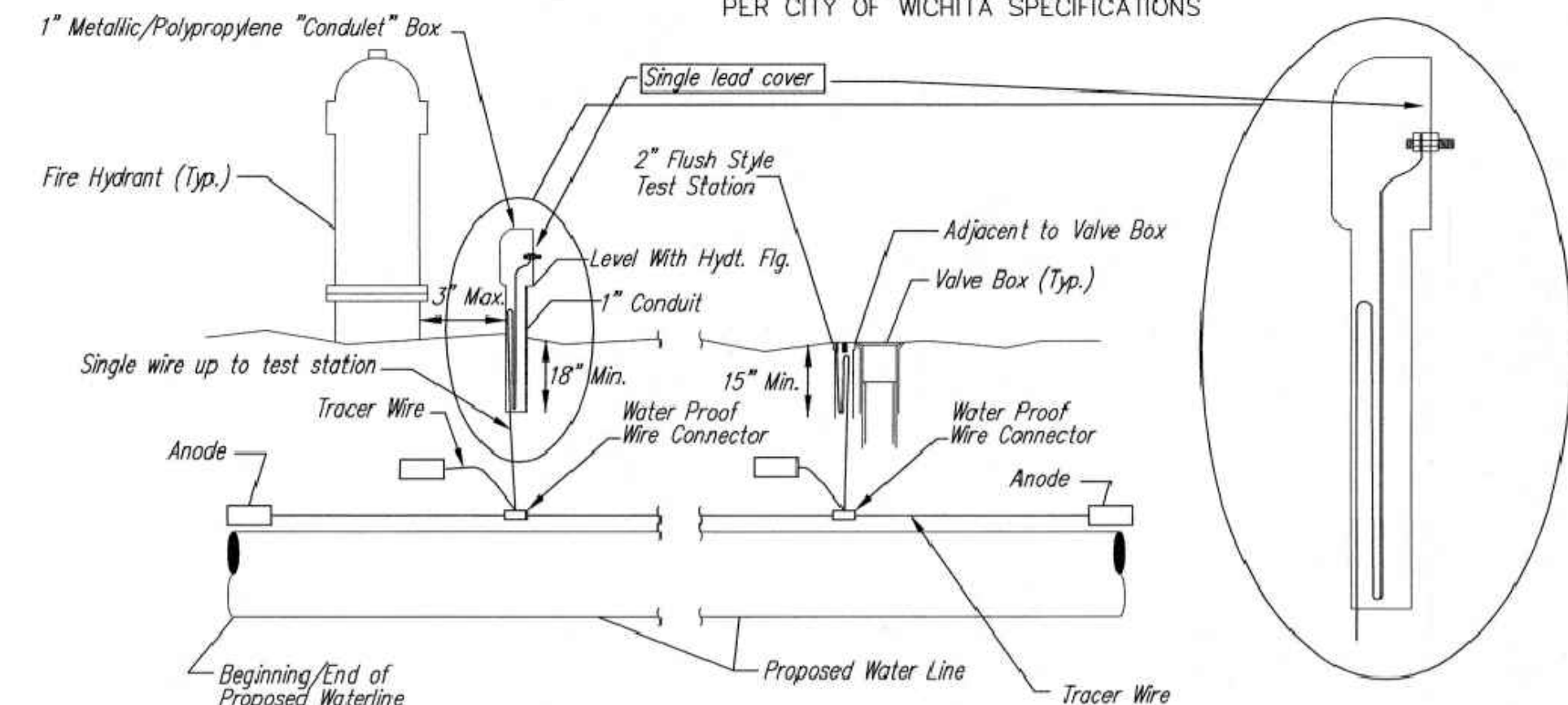
- MATERIALS LIST**
- 1- MJ ANCHOR TEE OR TANGENTIAL OUTLET ("D" x 6")
 - 1- 6" MJ GATE VALVE
 - 1- 6" VALVE BOX AND VALVE STEM EXTENSION IF REQUIRED *
 - 6" DI CL SJ PIPE (LENGTH VARIABLE)
 - 1- FIRE HYDRANT
 - 1- 6" ANCHOR COUPLING*
 - 2- 90° BENDS*
 - 6" DI CL PIPE WITH ADEQUATE JOINT RESTRAINT *
 - CONCRETE BLOCKING (AS REQUIRED)
 - RIVER WASHED PEA GRAVEL (AS REQUIRED)

* IF THE REQUIRED HYDRANT BURY IS IN EXCESS OF 5', BUT LESS THAN 7', CONTRACTOR SHALL USE STANDARD 5' HYDRANT BURY AND HYDRANT BARREL EXTENSIONS AS NECESSARY. IF THE REQUIRED HYDRANT BURY IS GREATER THAN 7', CONTRACTOR SHALL USE 5' HYDRANT BURY, 2-MJ 90° BENDS, 6" ANCHOR COUPLING AND 6" DI CL PIPE AS NECESSARY FOR VERTICAL ADJUSTMENT. THE CONTRACTOR SHALL PROVIDE ADEQUATE THRUST BLOCKING AT HYDRANT AND MEGALUGS, OR SIMILAR RESTRAINT BETWEEN 90° BENDS TO SECURE ALL FITTINGS DURING TESTING AND OPERATION. THE CONTRACTOR SHALL PROVIDE A VALVE STEM EXTENSION PER DETAIL THIS SHEET.

** CAUTION: WEEP HOLES TO BE KEPT CLEAR DURING CONSTRUCTION AND BACKFILL. CONCRETE FOR THRUST BLOCKING SHALL NOT OBSTRUCT WEEP HOLES. PLACE 1 CUBIC FOOT OF RIVER WASHED PEA GRAVEL AROUND EACH WEEP HOLE.

CONCRETE THRUST BLOCKING SHALL BE KEPT CLEAR OF BOLTS, NUTS, AND MJ ACCESSORIES.

FIRE HYDRANT ASSEMBLY
PER CITY OF WICHITA SPECIFICATIONS



TRACER WIRE
Conductive type pipe locator/tracer wire shall be install to locate all waterline pipe regardless of pipe material. The wire shall extend the entire length of the proposed pipe. The wire shall be taped to the waterline and pulled with the pipe. A waterproof connector shall be used at splice locations. A complete list of approved tracer wire and waterproof connectors can be found on the City of Wichita's website at www.wichita.gov.

WIRES
The tracer wire shall be Blue No. 12 AWG CCS with 45 mil HDPE insulation. To allow for grade adjustment, a minimum of 12" of excess wire shall be coiled at the bottom of the test station for all wires. Wire connectors shall be installed per manufacturer recommendations. Contractor shall attach wire being installed with proposed water main to any tracer wire installed with adjacent waterline projects.

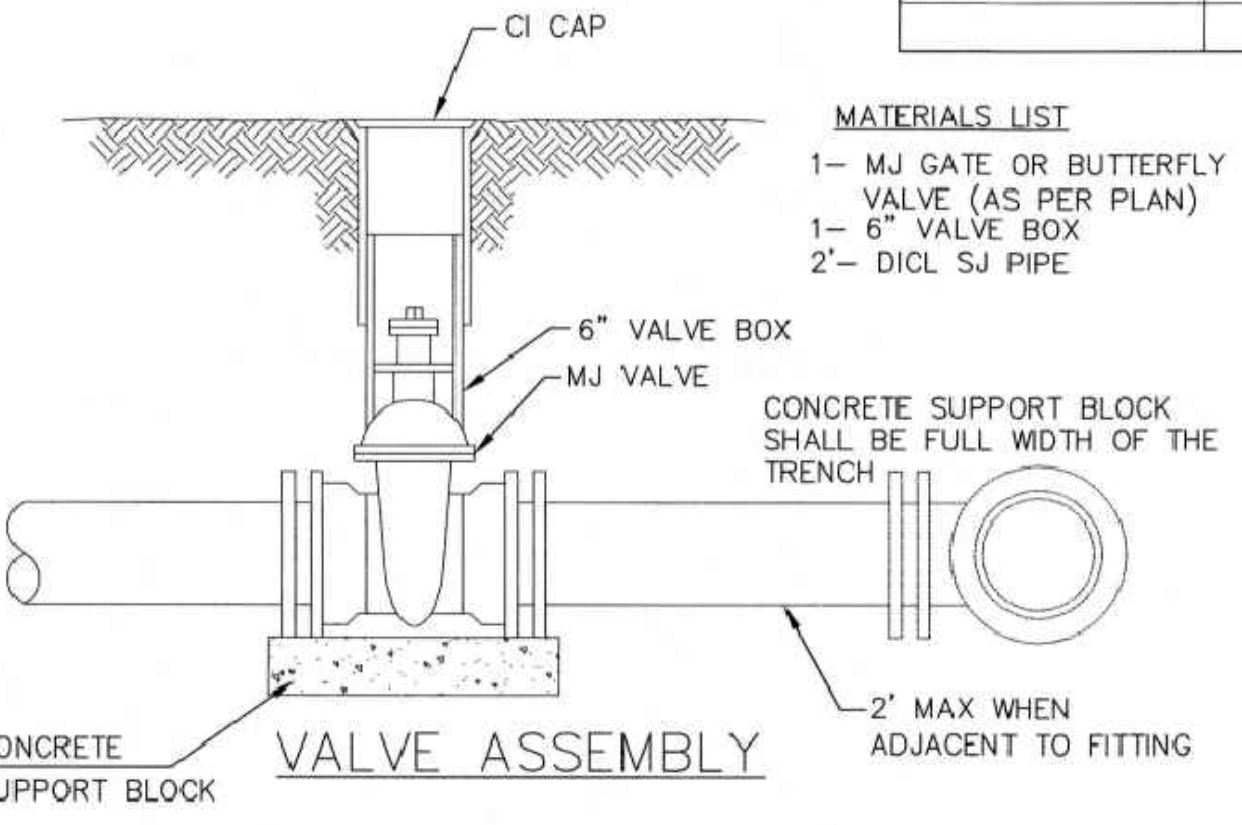
TEST STATIONS
The test station for fire hydrant application shall be a 1" "conduit" style station as manufactured by AGRA Industries with a removable solid cover having a single lead extending from the face or approved equal. The "conduit" style test station shall be attached to a 1" rigid galvanized conduit with a minimum length of 36" and plastic end bushing. The flush style shall have the word "WATER" stamped or molded into the lid. The test station for valve applications shall be a 2" flush style test station with wire connector on lid. Model # T2PH7B1LP Handley Industries or CD14*TP SnakePit as manufactured by Copperhead Industries or approved equal. The flush style shall have the word "WATER" stamped or molded into the lid. All test stations shall be manufactured using molded blue tops or sufficiently coated with blue enamel paint. The tracer wire and the anode wire shall be install to allow 12" of wire within the test station. The location of all test stations shall be recorded, and shown in the as-built drawings. Flush style test stations shall not be installed in pavement or sidewalk unless approved by the Engineer. Contractor shall extend tracer wire & move flush mount test station to nearest location out of pavement or sidewalk.

ANODES
The anodes shall be 3 lb. bare zinc or magnesium. The anodes shall be buried at the same elevation as the waterline at each test station. The anodes shall be connected to 12 AWG CCS which shall be extended to the test station.

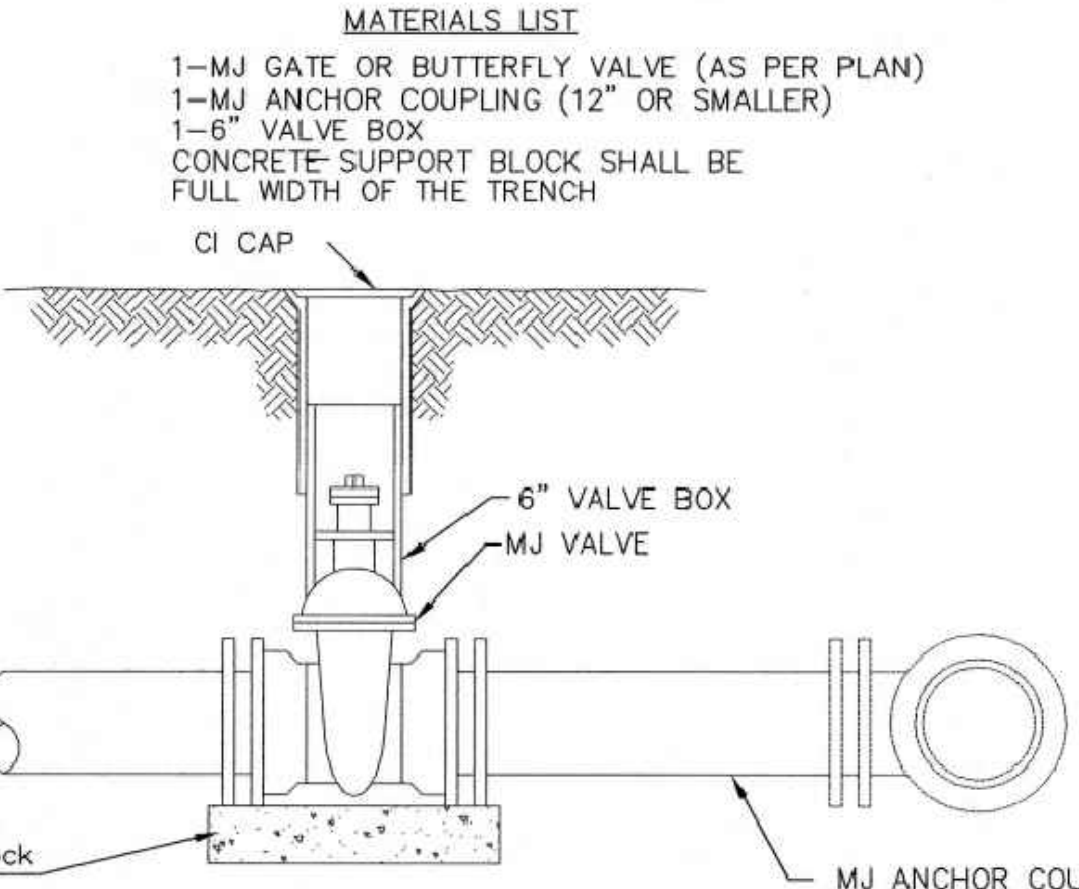
TRACER WIRE DETAIL
COST IS SUBSIDIARY TO PIPE INSTALLATION

FIRE HYDRANTS REQUIRED

STATION	BURY LINE ELEVATION	TOP OF PIPE ELEVATION	FIRE HYDRANT BURY REQUIRED*	VALVE STEM EXT. REQUIRED (ft)*
Line 1	0+31.07	1348.45	1344.10	5.0'

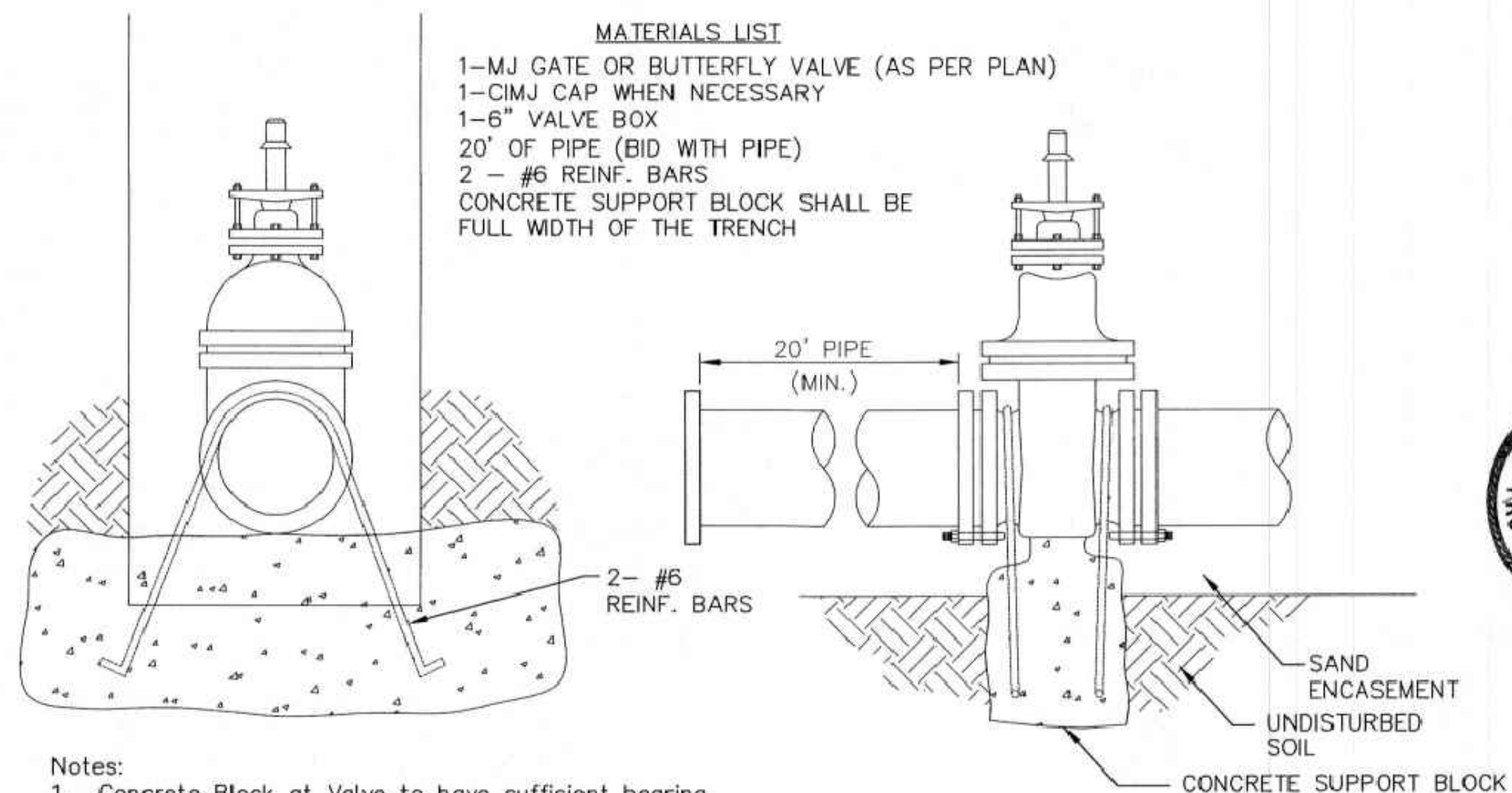


- MATERIALS LIST**
- 1- MJ GATE OR BUTTERFLY VALVE (AS PER PLAN)
 - 1- 6" VALVE BOX
 - 2'- DI CL SJ PIPE



ANCHORED VALVE ASSEMBLY

- MATERIALS LIST**
- 1- MJ GATE OR BUTTERFLY VALVE (AS PER PLAN)
 - 1- CIMJ CAP WHEN NECESSARY
 - 1- 6" VALVE BOX
 - 20' OF PIPE (BID WITH PIPE)
 - 2 - #6 REINF. BARS
 - CONCRETE SUPPORT BLOCK SHALL BE FULL WIDTH OF THE TRENCH

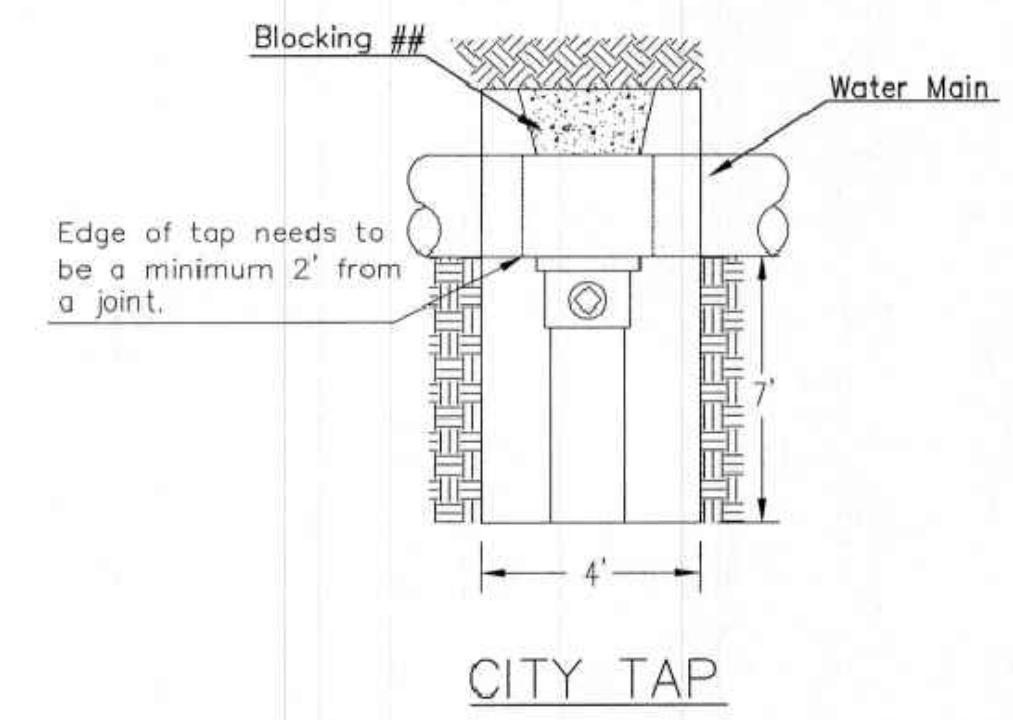


- Notes:**
- Concrete Block at Valve to have sufficient bearing in undisturbed soil to prevent thrust movement as shown in table at right. Field Engineer to determine thrust loading of undisturbed soil and final size of thrust block.
 - The thrust block shall be constructed such that bolts, nuts, and other MJ accessories are kept clear of concrete.
 - All valves at dead ends and at other locations as called out on the plans shall be blocked as shown here.

THRUST AT VALVES

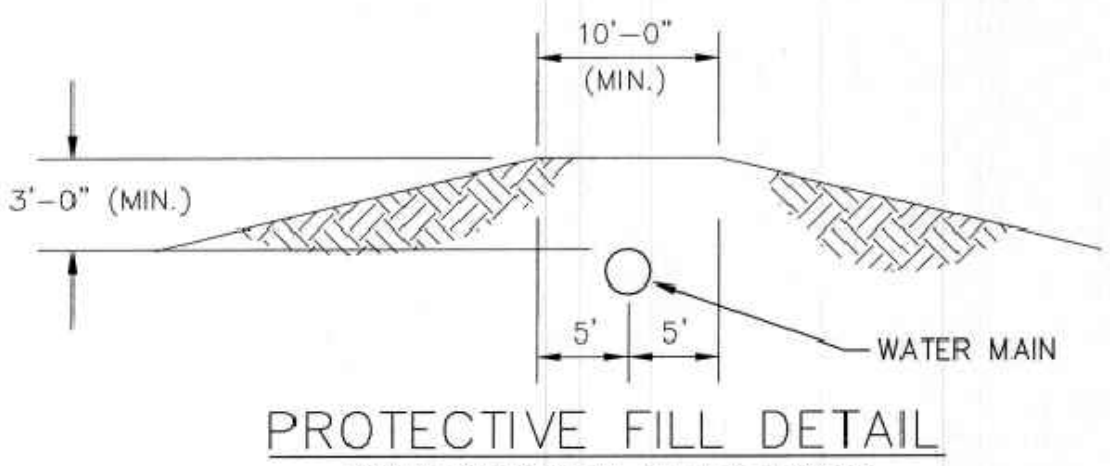
VALVE	THRUST AT 150 #/sq ft
4"	1809 lbs.
6"	4245 lbs.
8"	7540 lbs.
12"	16965 lbs.

ANCHORED VALVE ASSEMBLY, SPECIAL



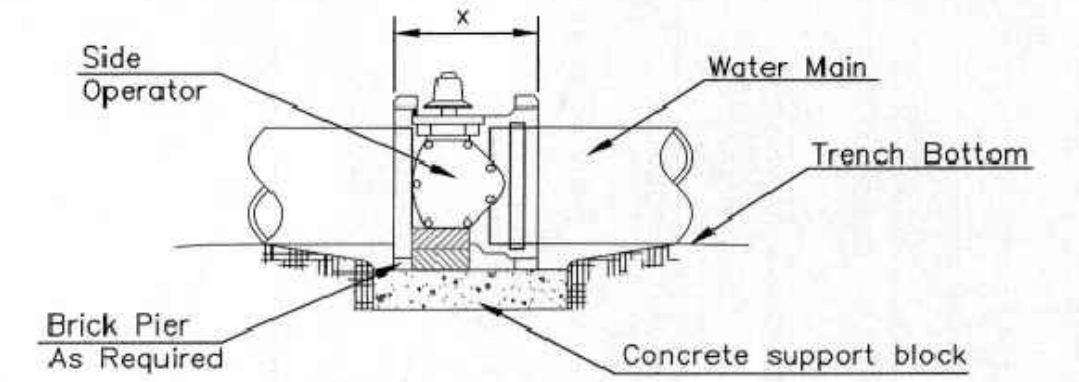
CITY TAP

When the City of Wichita makes tap, blocking is to be done by Contractor



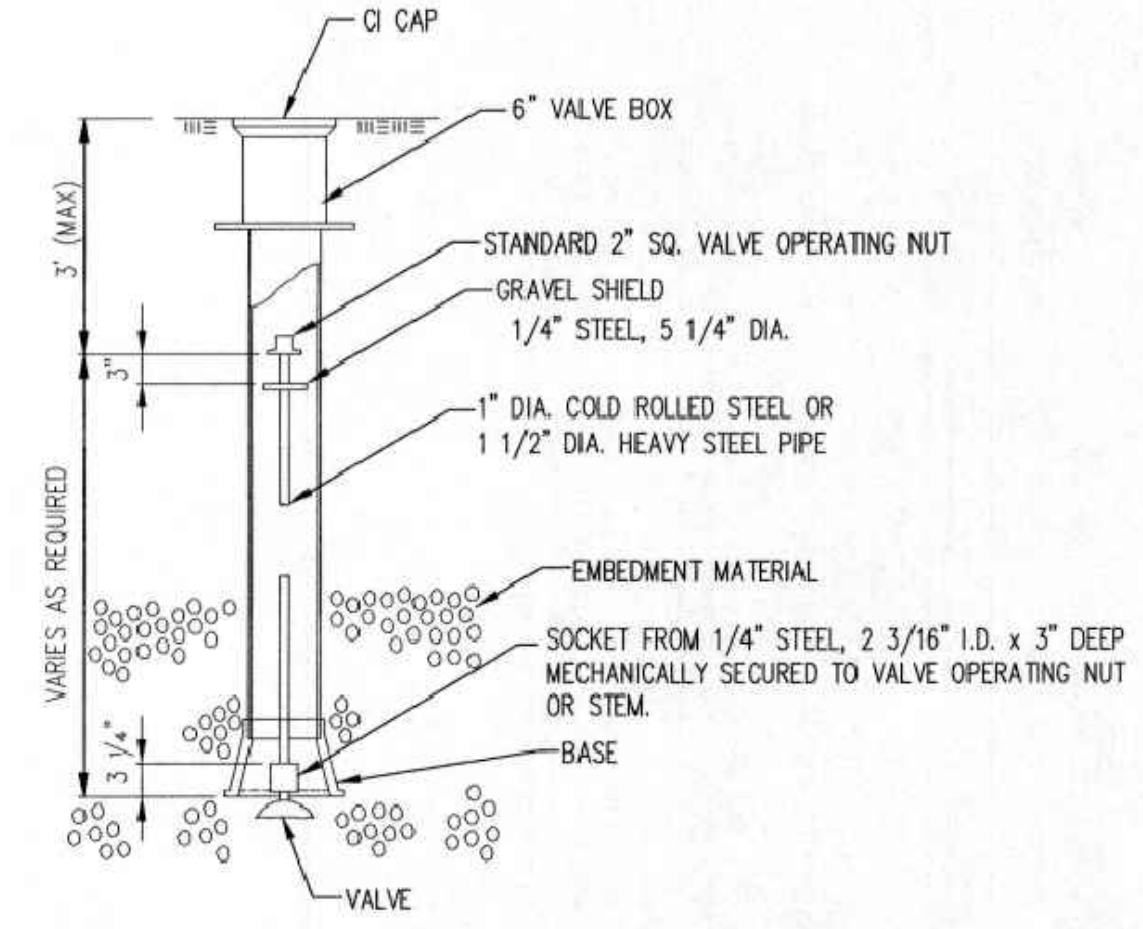
PROTECTIVE FILL DETAIL

MINIMUM PROTECTIVE FILL SHALL BE PROVIDED IN ALL INSTANCES WHERE COVER OVER THE PROP. WATER LINE IS LESS THAN 3'. (COST SUBSIDIARY TO PIPE INSTALLATION)



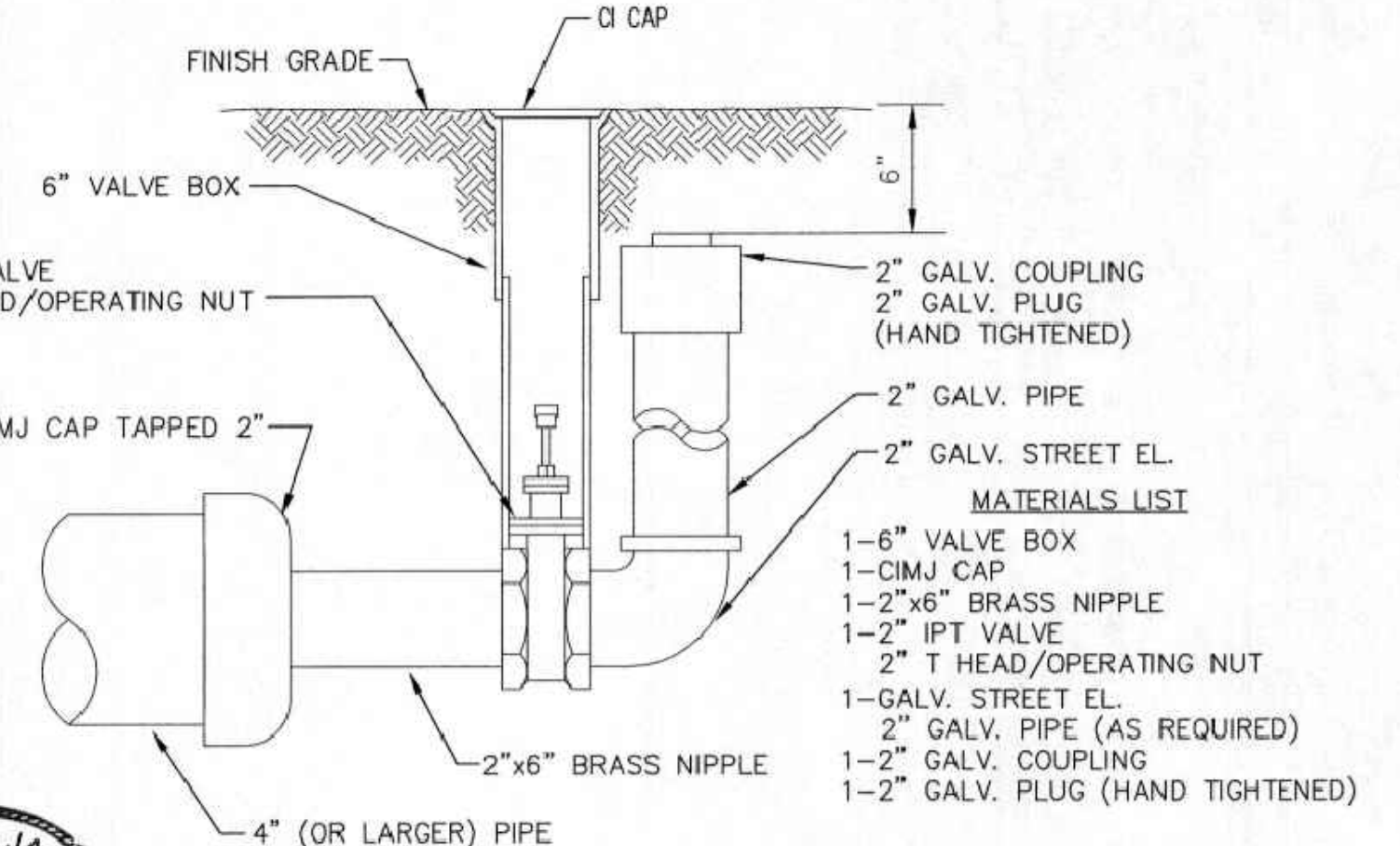
- NOTES**
- This detail covers Butterfly Valve installation, inclusive, regardless of type of pipe or joint used. 24" and larger lines to be detailed on plans.
 - 6" Valve Box and Cover required per City of Wichita Std. Specifications.
 - Conc. Support Block to be full width of trench.

CONCRETE SUPPORT BLOCKING FOR BUTTERFLY VALVE INSTALLATION



VALVE STEM EXTENSION DETAIL

NOTE: ONE VALVE STEM EXTENSION FOR EACH VALVE BURIED GREATER THAN 5'.



2" BLOWOFF ASSEMBLY



CITY OF WICHITA
PUBLIC WORKS & UTILITIES ENGINEERING DIVISION

STANDARD WATER ASSEMBLY DETAIL
CITY ENGINEER
GARY JANZEN, P.E.

PROJECT NUMBER: OCA NUMBER: DATE:

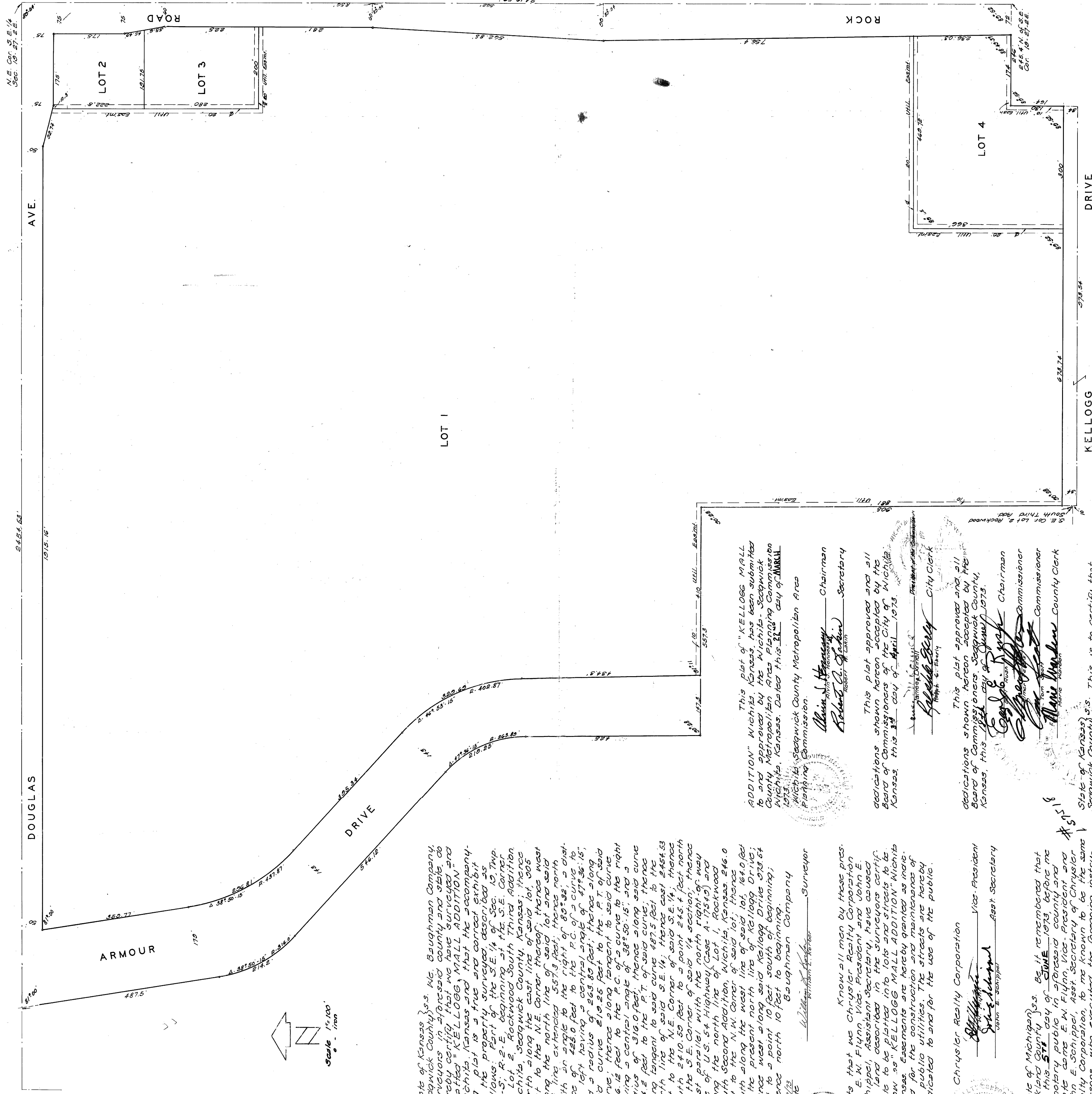
CITY ENGINEER'S OFFICE
CITY HALL - SEVENTH FLOOR
455 NORTH MAIN STREET
WICHITA, KANSAS 67202-1620
(316) 268-4501

SHEET
4 of 11

REVISED: OCTOBER 2016

S-3 4-25

KELLOGG MALL ADDITION WICHITA KANSAS



State of Kansas) ss. We, Baughman Company, Surveyors in and for Sedgewick County, Kansas, do hereby certify that we have surveyed and plotted "KELLOGG MALL ADDITION" in Sedgewick County, Kansas, and that the accompanying plat is a true and correct exhibit of the property surveyed, according to the following description, to-wit: The Third Addition of Lot 2, Rockwood South Third Addition of Lot 2, Sedgewick County, Kansas; thence north along the east line of said lot, 305 feet to the N.E. Corner thereof; thence west along the north line of said lot, and said lot, with an angle to the right of 89° 33' 10" a distance of 243.0 feet to the P.C. of a curve to the left having a central angle of 47° 36' 15" and a radius of 263.83 feet; thence along said curve along a tangent to said curve, a distance of 316.0 feet; thence along said curve a radius of 214.2 feet to the P.T. of said curve; thence along a tangent to said curve, a distance of 214.2 feet to the N.E. Corner of said lot; thence north 10 feet to the N.E. Corner of said lot; thence east parallel with the north right-of-way line of U.S. 54 Highway (Case A-17545) and along the north line of Lot 1, Rockwood South, Second Addition, Wichita, Kansas, 216.0 feet to the N.W. Corner of said lot; thence east along the present north line of Kellogg Drive, a distance of 10 feet to the N.E. Corner of said lot; thence west along said Kellogg Drive 573.54 feet to a point 10 feet south of beginning; thence north 10 feet to beginning.

Edith Baughman Surveyor

Know all men by these presents that we Chrysler Realty Corporation by E. M. Flynn, Vice-President and John E. Whipple, Assistant Secretary, have caused to be plotted into lots and streets to be known as "KELLOGG MALL ADDITION" in Sedgewick County, Kansas, and that the accompanying plat is a true and correct exhibit of the property surveyed, according to the following description, to-wit: The Third Addition of Lot 2, Rockwood South Third Addition of Lot 2, Sedgewick County, Kansas; thence north along the east line of said lot, 305 feet to the N.E. Corner thereof; thence west along the north line of said lot, and said lot, with an angle to the right of 89° 33' 10" a distance of 243.0 feet to the P.C. of a curve to the left having a central angle of 47° 36' 15" and a radius of 263.83 feet; thence along said curve along a tangent to said curve, a distance of 316.0 feet; thence along said curve a radius of 214.2 feet to the P.T. of said curve; thence along a tangent to said curve, a distance of 214.2 feet to the N.E. Corner of said lot; thence north 10 feet to the N.E. Corner of said lot; thence east parallel with the north right-of-way line of U.S. 54 Highway (Case A-17545) and along the north line of Lot 1, Rockwood South, Second Addition, Wichita, Kansas, 216.0 feet to the N.W. Corner of said lot; thence east along the present north line of Kellogg Drive, a distance of 10 feet to the N.E. Corner of said lot; thence west along said Kellogg Drive 573.54 feet to a point 10 feet south of beginning; thence north 10 feet to beginning.

John E. Whipple Vice-President
John E. Whipple Assistant Secretary

Chrysler Realty Corporation

John E. Whipple Vice-President
John E. Whipple Assistant Secretary

State of Michigan) ss. Be it remembered that on this 5th day of June, 1973, before me a Notary Public in and for Sedgewick County, Kansas, the following persons, to-wit: E. M. Flynn, Vice-President, and John E. Whipple, Assistant Secretary, of Chrysler Realty Corporation, to me known to be the same persons who executed the foregoing instrument of writing, and duly acknowledged the execution of the same. In testimony whereof I have hereunto set my hand and affixed my notarial seal the day and year above written.

John E. Whipple Notary Public
My Comm. Exp. 2-28-75

This part of "KELLOGG MALL ADDITION" in Sedgewick County, Kansas, has been submitted to and approved by the Wichita, Sedgewick County Metropolitan Area Planning Commission, Wichita, Kansas, dated this 11th day of April, 1973.

Blaine S. Haggerty Chairman
Robert C. G. Rubin Secretary

This plat approved and all dedications shown hereon accepted by the Board of Commissioners of the City of Wichita, Kansas, this 13th day of April, 1973.

Spencer E. Gandy Chairman
Gregory J. Gandy Commissioner
Marie Warden County Clerk

This plat approved and all dedications shown hereon accepted by the Board of Commissioners, Sedgewick County, Kansas, this 18th day of June, 1973.

John St. John Chairman
Paul B. Silvert Commissioner
Marie Warden County Clerk

This is to certify that this plat was filed for record in the office of the Register of Deeds this 18th day of June, 1973, at 1:25:00 o'clock P.M., and is duly recorded.

John St. John Register of Deeds
Paul B. Silvert Deputy

Entered on transfer record this 18 day of June 1973
Marie Warden County Clerk

License No. F 968 89 1037

**FOR REFERENCE ONLY
NOT TO SCALE**

This digital plat record accurately reproduces in all details the original plat filed with the Sedgewick County Register of Deeds. Bill Meek by Sedgewick County Geographic Information Systems.

Bill Meek, Register of Deeds
Digital edition of original signature

BAUGHMAN COMPANY

315 Ellis St.
Wichita, KS 67211
BaughmanCo.com

SHEEL'S TOWNE EAST SQUARE

COPY OF PLAT

WATER DISTRIBUTION SYSTEM

PROJECT NUMBER: 21-09-E010

DATE: February 22, 2022

SHEET 11 OF 11