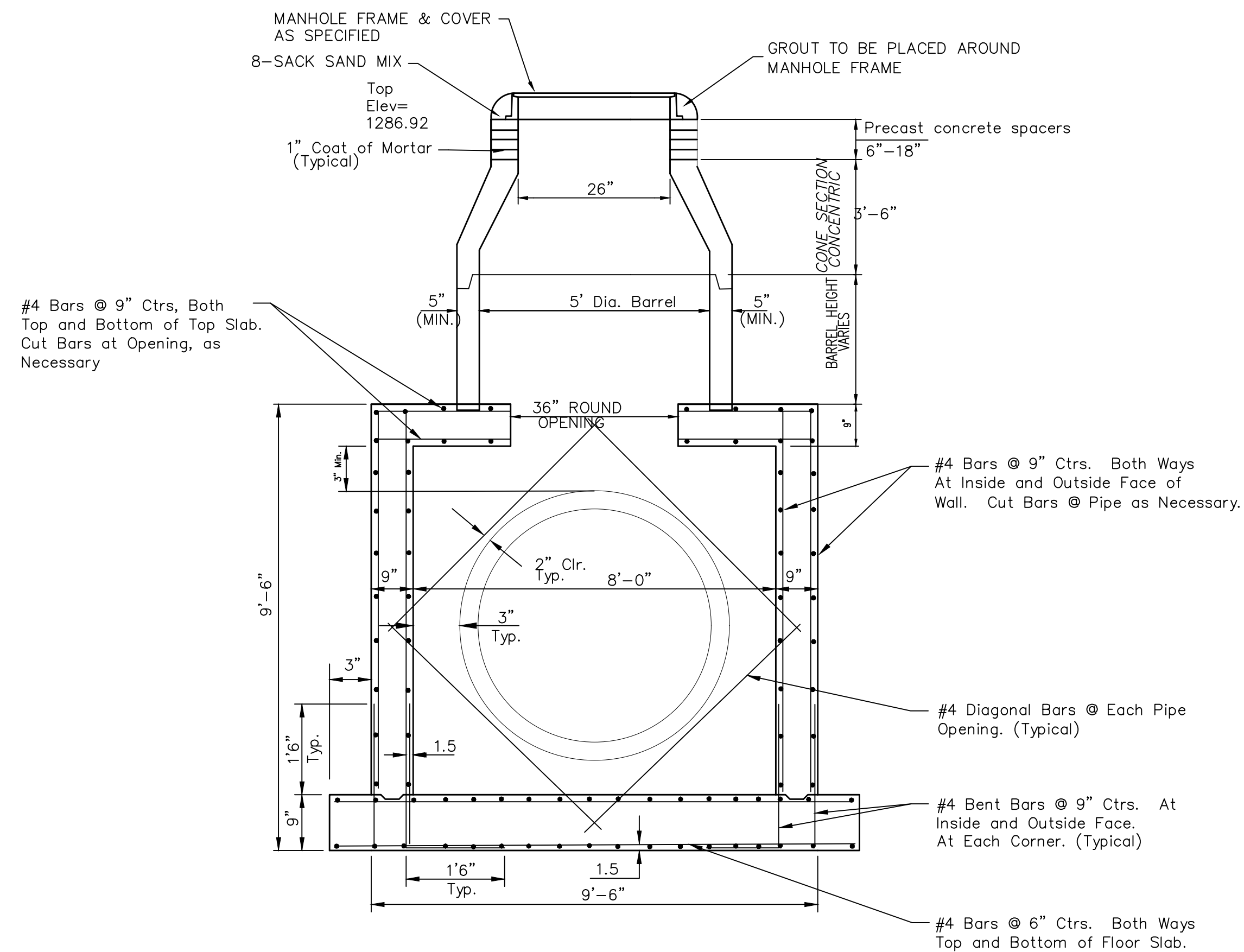


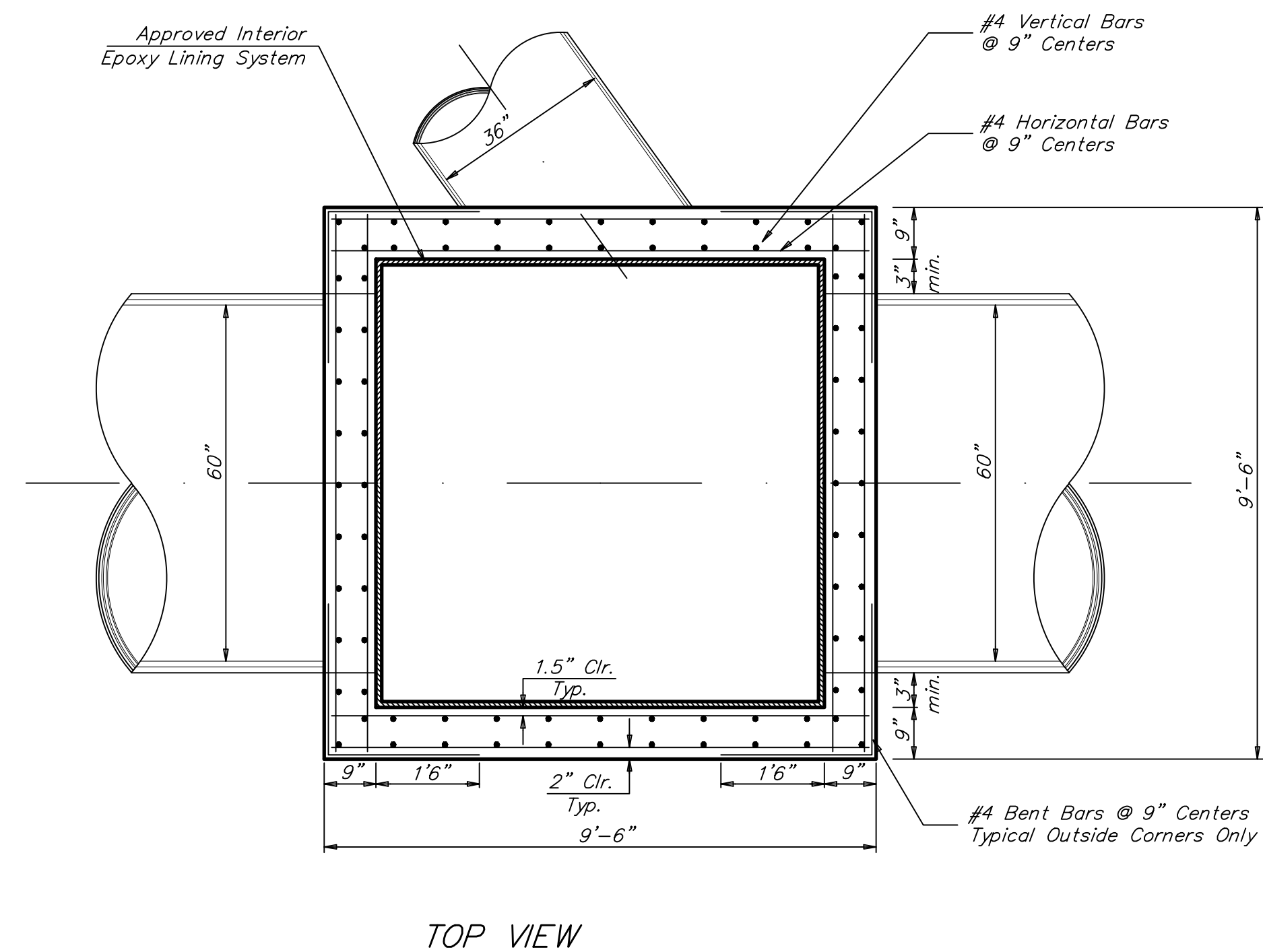
EAST & WEST CONNECTION STRUCTURE (TYP)
Not to Scale

BYPASS PUMPING GENERAL NOTES

- To Make the Connection to the 26" HDPE Bypass Pipe, the Contractor shall remove the 8" Reinf. Concrete Manhole Top and 26" HDPE Cap and then make the connection by fusing or restrained joint fitting as approved by the Field Engineer. After Bypass pumping is complete, the Contractor shall cut off the additional pipe or remove any fitting so the the 8" Reinf. Concrete Manhole Top can be set back in place. All cost associated in the making and removing this connection shall be **SUBSIDIARY** to the installation of the Connection Structures.
- In order to bypass pump around the Reinforced Concrete Manhole (# 5645-16) that is to be rebuilt, the Contractor shall be required to pump Peak Flow from the existing Reinforced Concrete Manhole in Hydraulic south of the railroad tracks to the Reinforced Concrete Manhole in Blake Street 275' east of east R/W of Southeast Boulevard. Contractor shall obtain "Peak Flow" from City of Wichita - James Wagner, Jwagner@wichita.gov. All cost associated with the bypass pumping operation shall be **SUBSIDIARY** to the Lump Sum Bid Item "Bypass Pumping".
- After the Bypass Pumping is complete, the Contractor shall clean inside connection structures and flush the 26" HDPE pipe with clean water for a minimum of 15 minutes to clean the pipe. All cost associated with the flushing operation shall be **SUBSIDIARY** to the Lump Sum Bid Item "Site Restoration".
- The Contractor can close Blake Street from just east of the middle drive into Discount Auto Glass to just east of the Reinforced Concrete Manhole 275' east of east R/W of Southeast Boulevard. See Traffic Control Details for more information.
- Concrete 6'-4" x 6'-4" Manhole Top shall be set with one side parallel to nearby Curb & Gutter.



REINFORCED CONCRETE MANHOLE # 5645-16
Not to Scale



TOP VIEW

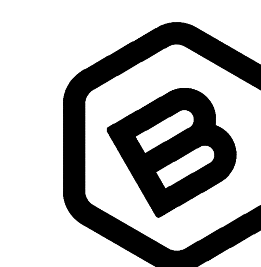
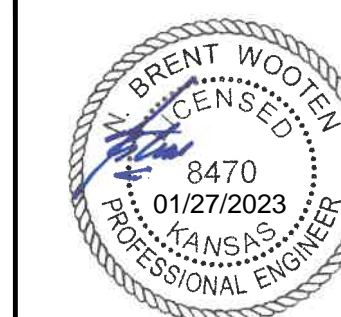
SS MANHOLE NOTES

- Contractor shall submit shop drawings to Engineer for review.

PHASE	SANITARY SEWER RECONSTRUCTION CONSTRUCTION SEQUENCE *	SEWAGE FLOW CONTROL PHASE **	TRAFFIC CONTROL PHASE ***
1	Relocate Traffic Signal Conduit along Hydraulic Ave.	----	1A
2	Line 1: Construct New SS MH (ID # New)	1	1A
3	Line 1: Abandon Exist. SS MH # (5645-19)		
4	Line 1: Abandon Exist. 30" & 36" SS Pipes		
5	Line 1: Rebuild Exist. SS MH # (5645-18)	2	1A & 1B
6	Install SS Line 2 By-Pass & Build Connection Structures	----	2A
7	Rebuild Exist. SS MH # (5645-16)	3	2A & 2B
8	Replace Curb & Gutter, Median and Street Pavement	----	1A

NOTES:

- * See Sheet No.'s 3, 4 & 16.
- ** See Sheet No. 8
- *** See Sheet No.'s 9-12



**BAUGHMAN
COMPANY**

315 Ellis St.
Wichita, KS 67211
316-262-7271
BaughmanCo.com

HYDRAULIC & SE BLVD SS

**MISC.
DETAILS**

CAPITAL IMPROVEMENT
PROJECT

PROJECT NUMBER:
468-85276

DESIGN: ENG DRAWN: JSB

DATE: January 26, 2023

SHEET 5 OF 24