

PAVING AND INCIDENTAL DRAINAGE FOR CEDAR VIEW SECOND ADDITION

WICHITA, SEDGWICK COUNTY, KANSAS

PROJECT NO. 472-83300

MICHAEL E. LINDEBAK, CITY ENGINEER

OCA 765665

GENERAL NOTES

1. UNLESS SHOWN OR STATED OTHERWISE ON THESE DRAWINGS, MATERIALS AND CONSTRUCTION SHALL BE IN ACCORDANCE WITH CITY OF WICHITA CONCRETE PAVEMENT AND ASPHALTIC CONCRETE PAVEMENT SPECIFICATIONS.
2. THE CONTRACTOR SHALL BE RESPONSIBLE FOR PRESERVING PROPERTY IRONS. THE CONTRACTOR WILL BE REQUIRED TO RE-ESTABLISH ANY PROPERTY IRONS WHICH ARE DAMAGED OR DESTROYED BY HIS CONSTRUCTION OPERATIONS. SUCH IRONS SHALL BE RE-ESTABLISHED BY A LICENSED LAND SURVEYOR IN ACCORDANCE WITH STATE LAWS.
3. TRANSITION CURB FROM FULL HEIGHT COMBINATION CURB AND GUTTER TO ROLL TYPE COMBINATION CURB AND GUTTER IS TO BE PAID AS BID FOR LINEAL FEET COMBINED CURB AND GUTTER (3 5/8" ROLL).
4. EXISTING UTILITIES AND THEIR LOCATIONS, AS SHOWN ON THE PLANS REPRESENT THE BEST INFORMATION OBTAINABLE FOR DESIGN. LOCATION INFORMATION HAS BEEN OBTAINED FROM THE VARIOUS UTILITY COMPANIES AND IS EITHER FROM COMPANY RECORD DRAWINGS OR COMPANY PROVIDED FIELD LOCATIONS. THE PLAN LOCATIONS SHOWN ARE NOT GUARANTEED. ADDITIONAL EXISTING UTILITIES MAY ALSO BE ENCOUNTERED.
5. CONTRACTOR WILL BE REQUIRED TO PROVIDE A MINIMUM ADVANCE NOTICE OF FORTY-EIGHT (48) HOURS TO UTILITY COMPANIES PRIOR TO STARTING ANY EXCAVATION AS FOLLOWS:

KANSAS ONE-CALL 1-800-344-7233
OR 687-2470 (LOCAL WICHITA)

THE CONTRACTOR MUST NOTIFY THE FOLLOWING IN CASE OF AN EMERGENCY:

SOUTHWESTERN BELL TELEPHONE COMPANY	1-800-734-7590
CABLEVISION	263-2061
KG&E (GAS & ELECTRIC)	383-8600
CITY OF WICHITA WATER & SEWER MAINT.	268-4908
ARKLA GAS COMPANY	942-8350 OR 263-8161
SEGWICK COUNTY	383-7901

6. RUBBLE FROM THE REMOVAL OF MISCELLANEOUS STRUCTURES AND EXCESS EXCAVATION WHICH IS TO BE WASTED SHALL BE DISPOSED OF ON SITES TO BE PROVIDED BY THE CONTRACTOR. THESE SITES SHALL BE APPROVED BY THE ENGINEER AS TO SUITABILITY, APPEARANCE AND SITE LOCATION. LOCATIONS THAT, IN THE OPINION OF THE ENGINEER, WILL LEAVE AN UNSIGHTLY APPEARANCE WILL NOT BE APPROVED. ALL DISPOSAL SITES MUST BE APPROVED BY THE KANSAS DEPARTMENT OF HEALTH AND ENVIRONMENT. MATERIAL EITHER STOCKPILED OR DISPOSED OF IN A FLOOD PLAIN WOULD REQUIRE A KANSAS STATE BOARD OF AGRICULTURE PERMIT. ANY MATERIAL DUMPED IN WATERS OF THE UNITED STATES OR WETLANDS IS SUBJECT TO U.S. CORPS OF ENGINEERS PERMITTING REGULATIONS. ANY MATERIAL BURIED OR STOCKPILED BEYOND APPROVED CONSTRUCTION LIMITS WOULD REQUIRE ADDITIONAL ARCHAEOLOGICAL INVESTIGATIONS UNLESS BURIED IN A PREVIOUSLY APPROVED BORROW LOCATION.

7. A SAW CUT OF AT LEAST ONE-HALF THE DEPTH OF THE EXISTING SURFACE COURSES OR ONE-FOURTH THE DEPTH OF THE EXISTING TOTAL PAVEMENT THICKNESS SHALL BE PROVIDED AT LOCATIONS WHERE PROPOSED CONSTRUCTION ABUTS AN EXISTING SURFACE OR PAVEMENT FOR WHICH PARTIAL REMOVAL OF THAT SURFACE OR PAVEMENT IS REQUIRED. SAW JOINT TO FACILITATE REMOVAL WITHIN THREE (3) FEET OF EXISTING JOINTS WILL NOT BE PERMITTED AND FOR SUCH INSTANCES THE LIMITS OF REMOVAL SHALL EXTEND TO THE EXISTING JOINT. SUCH SAW CUTS WILL NOT BE PAID FOR DIRECTLY AND THIS COST SHALL BE CONSIDERED AS SUBSIDIARY TO THE REMOVAL OF SURFACE OR PAVEMENT.

8. ALL LAWN/TURF AREAS DISTURBED BY CONSTRUCTION OF THE PROPOSED IMPROVEMENTS SHALL BE RESTORED WITH THE SAME GRASS/SOD AS EXISTING. RESTORATION OF DISTURBED AREAS SHALL INCLUDE, BUT NOT BE LIMITED TO, TOP SOIL PREPARATION, SEEDING, MULCH, AND/OR RESEEDING. ALL SEEDING/SODDING WORK SHALL BE IN ACCORDANCE WITH THE CITY OF WICHITA STANDARD SPECIFICATIONS AND THE CITY OF WICHITA ADMINISTRATIVE REGULATION NO. AR78 WHICH GOVERNS CLEAN-UP AND RESTORATION OR REPLACEMENT FOLLOWING CONSTRUCTION. ALL COSTS FOR THIS WORK SHALL BE SUBSIDIARY TO THE LUMP SUM PRICE BID FOR "SITE RESTORATION".

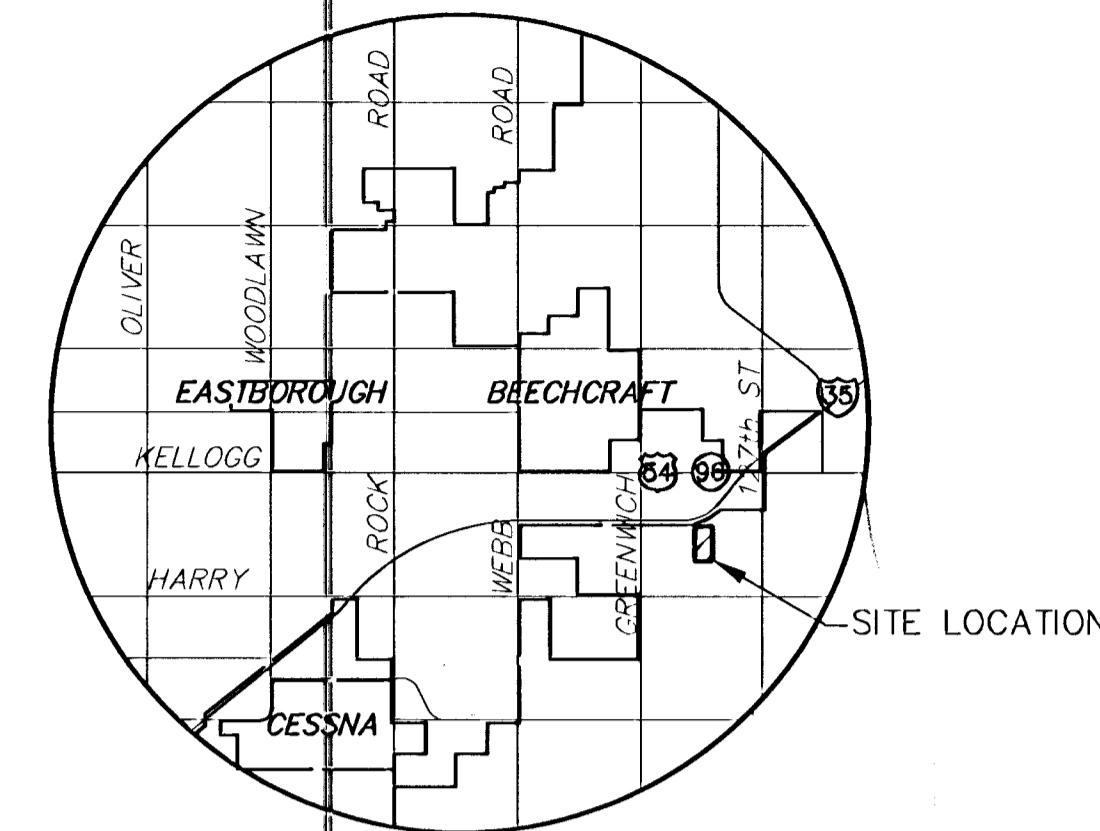
9. ALL DISTURBED AREAS SHALL BE SEEDED WITH K-31 FESCUE AT A RATE OF 26LB/AC. COST FOR THIS WORK SHALL BE SUBSIDIARY TO THE LUMP SUM PRICE FOR "SITE RESTORATION".

10. ANY TREE REMOVAL WILL NEED THE APPROVAL OF THE OWNER OR OWNERS REPRESENTATIVE PRIOR TO CONSTRUCTION.

BEDFORD/BEDFORD COURT: FROM THE NORTH LINE OF LINCOLN TO AND INCLUDING THE CUL-DE-SAC SERVING LOTS 23 THROUGH 31, BLOCK 1.

BEDFORD COURT: FROM THE EAST LINE OF BEDFORD TO AND INCLUDING THE CUL-DE-SAC SERVING LOTS 1 THROUGH 14, BLOCK 1.

BEDFORD COURT: FROM THE EAST LINE OF BEDFORD TO AND INCLUDING THE CUL-DE-SAC SERVING LOTS 15 THROUGH 22, BLOCK 1.



LOCATION MAP

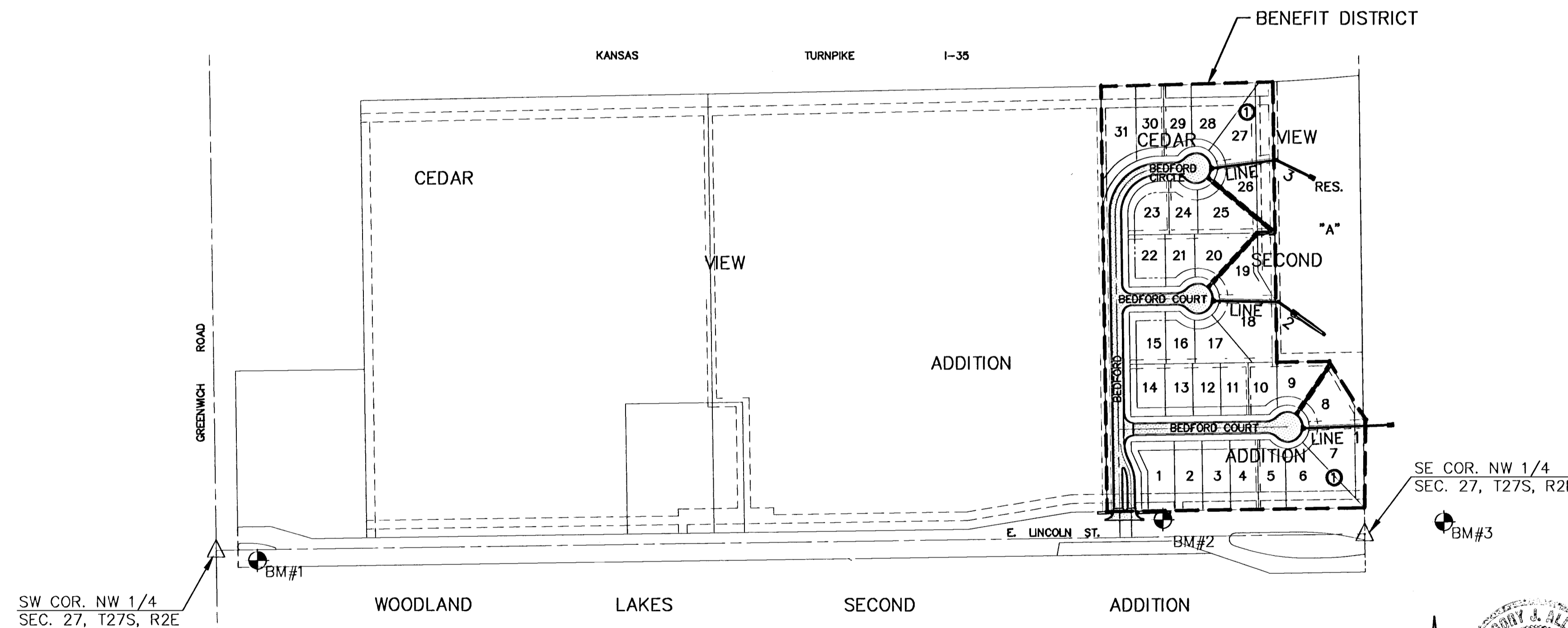
BOOKED
11-6-01
MEL
D-525

INDEX TO DRAWINGS

SHEET NO.	DESCRIPTION
1	TITLE SHEET
2-4	PAVING DETAILS
5	SIGNING
6-7	BEDFORD
8	BEDFORD COURT (SOUTH)
9	BEDFORD COURT (NORTH)
10	INLET DETAILS
11	MANHOLE DETAILS
12	PLAN & PROFILE LINE 1
13	PLAN & PROFILE LINE 2
14	PLAN & PROFILE LINE 3
15-16	SIDEWALK PLAN
17	EROSION CONTROL
18-24	PAVING CROSS SECTIONS
25	FINAL PLAT

BENCHMARKS

- BM #1 RAILROAD SPIKE IN SECOND POWER POLE EAST OF GREENWICH ROAD AND SOUTH OF LINCOLN STREET ELEV. = 1336.39
- BM#2 "□" CUT TC, 25 +OR- EAST OF NE CORNER LINCOLN & BEDFORD CT. ELEV. = 1354.99
- BM#3 "□" CUT NE CORNER HEADWALL @ RCB LINCOLN NEAR CENTER SECTION. ELEV. = 1346.58



LENGTH OF PROJECT	
BEDFORD	991.00 FT.
BEDFORD CT. (NORTH)	187.00 FT.
BEDFORD CT. (SOUTH)	390.00 FT.
EARTHWORK SUMMARY*	
EXCAVATION	2100.0 C.Y.
LOOSE FILL	1370.0 C.Y.
COMPACTED FILL	2545.0 C.Y.
CONTRACTOR FURNISH	2180.0 C.Y.

*INCLUDES SIDEWALK

SCALE: 1" = 200'

LEGEND

• IRON



CEDAR VIEW SECOND ADDITION
PROJECT NAME

PAVING PLANS
SHEET TITLE

DESIGN BY:	WNU	CHECKED BY:	GJA
DATE:	FEBRUARY 2001	JOB NO.:	00226E
		SHEET OF:	1 / 25