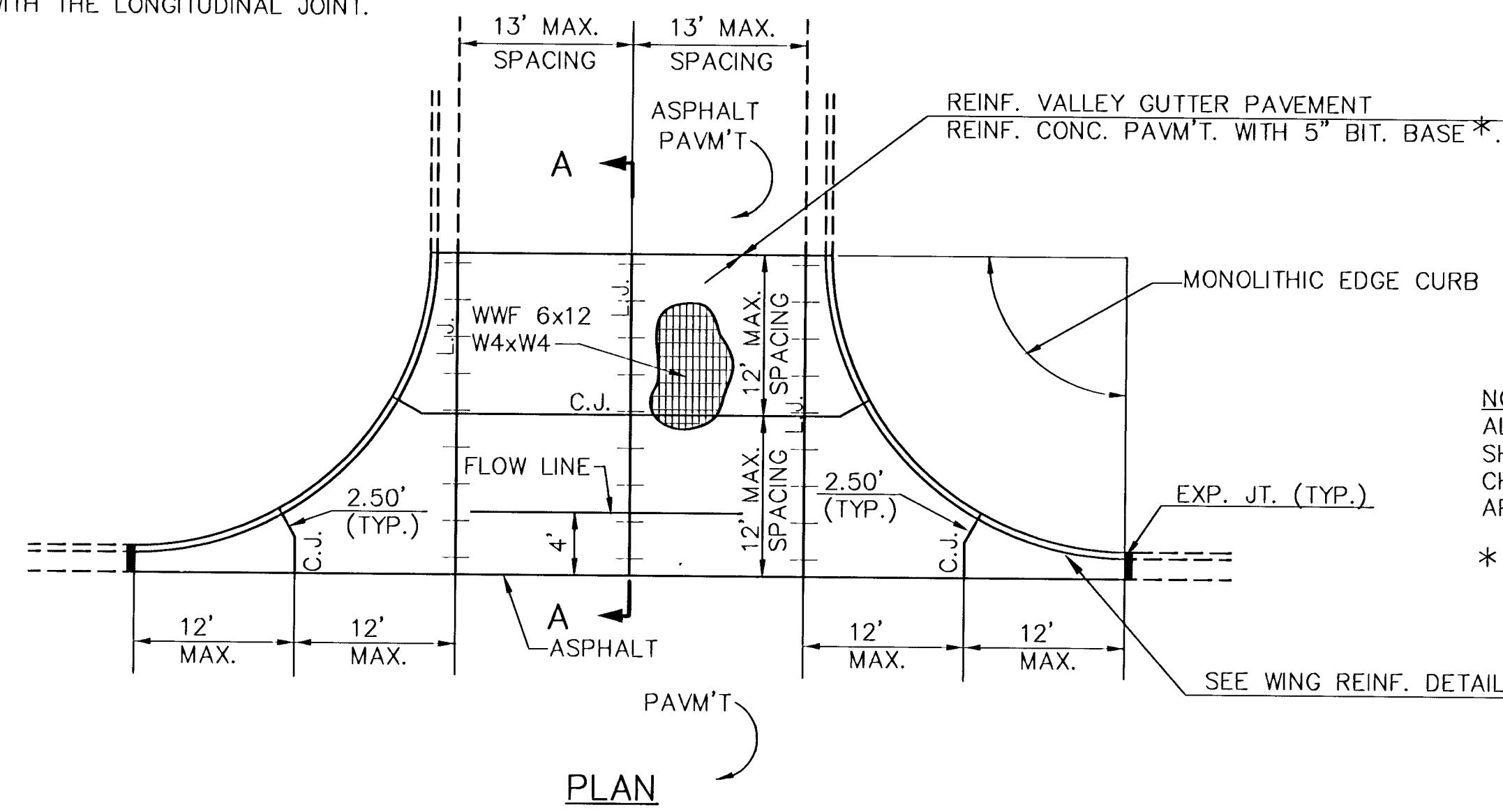
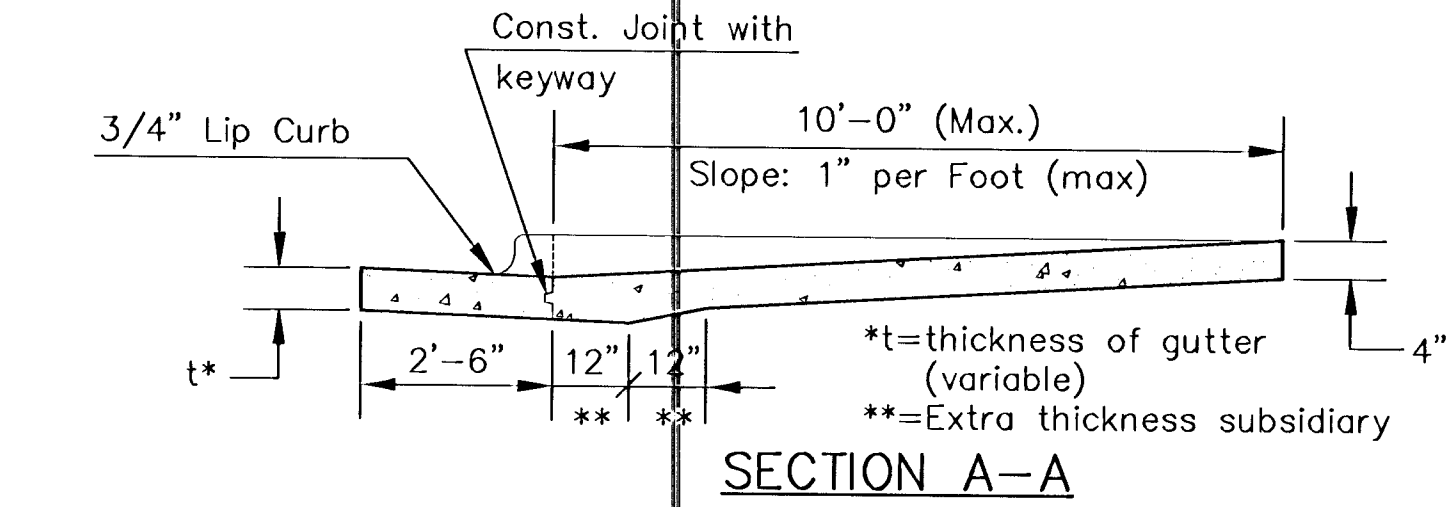
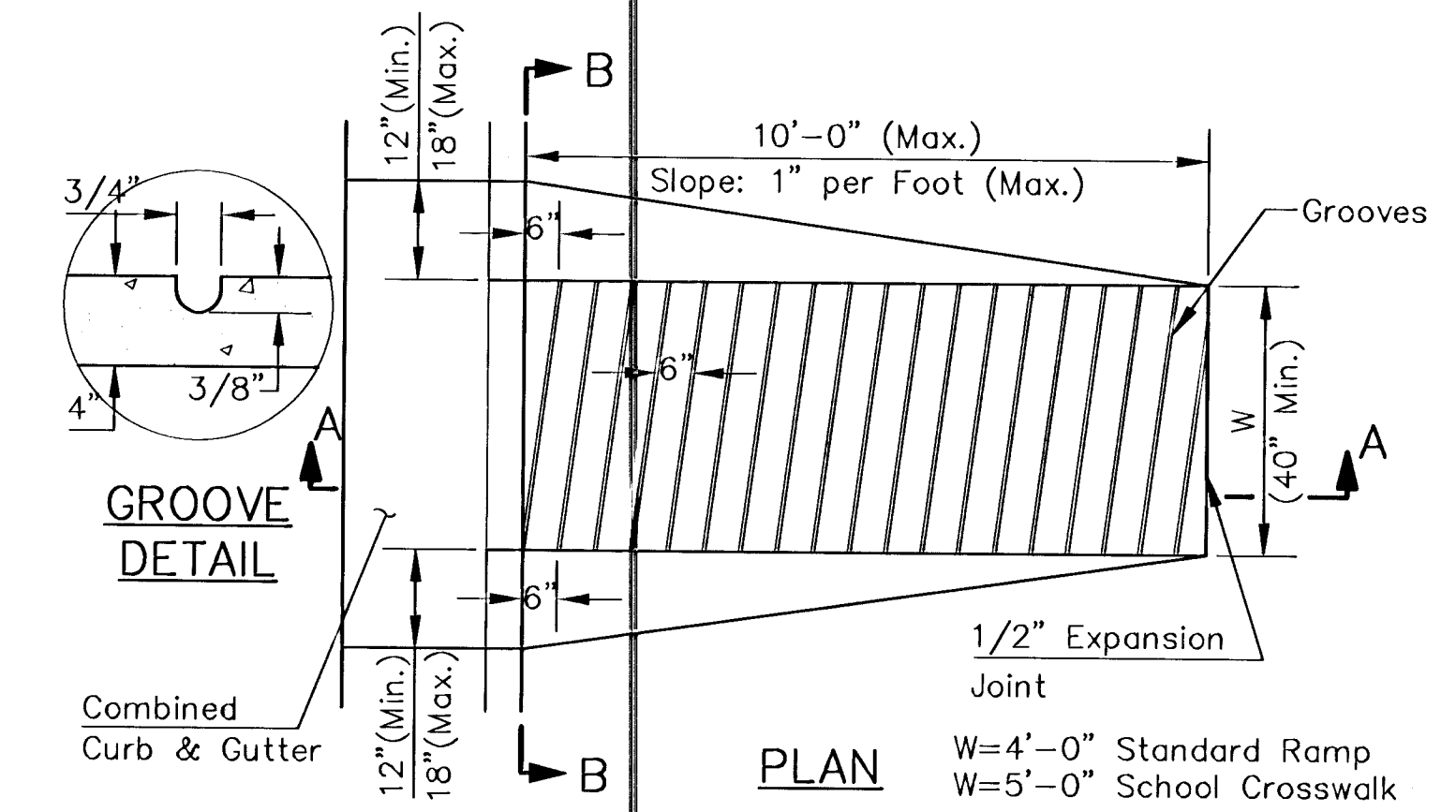
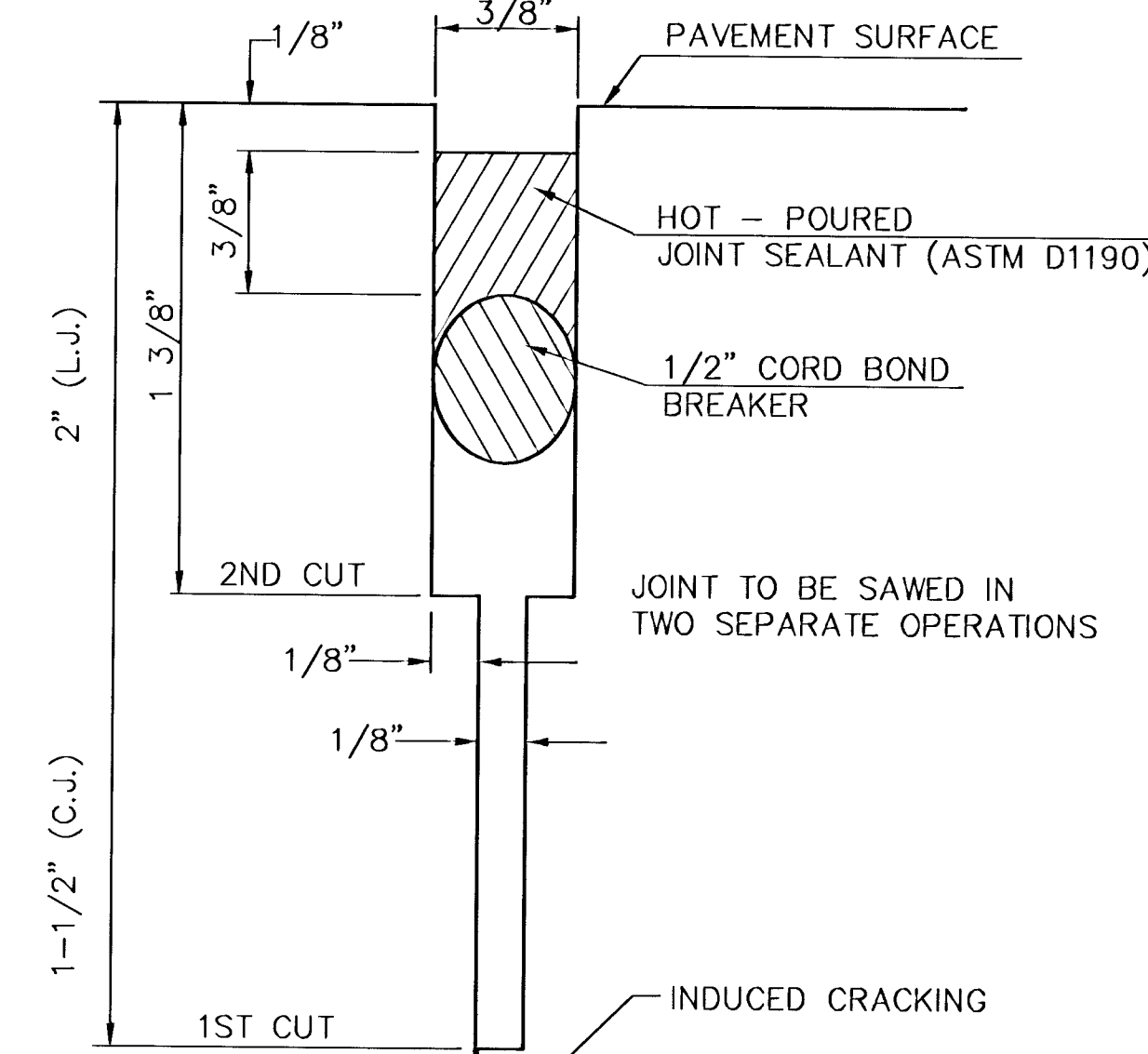


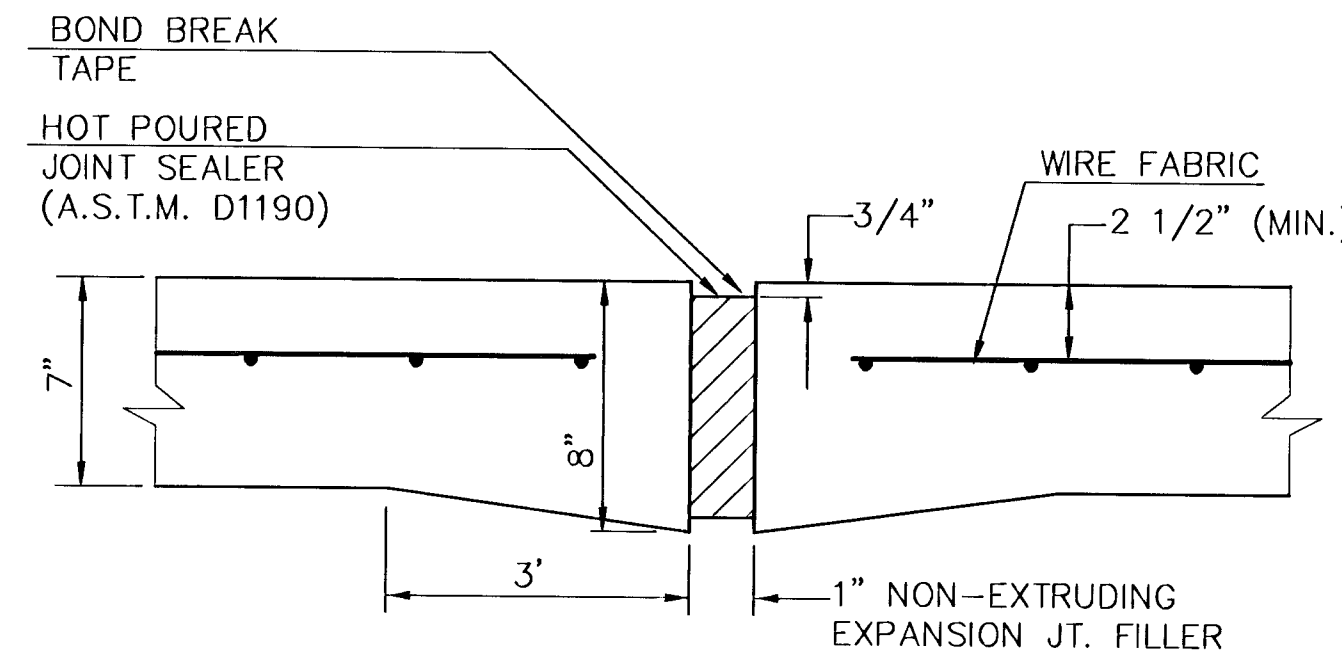
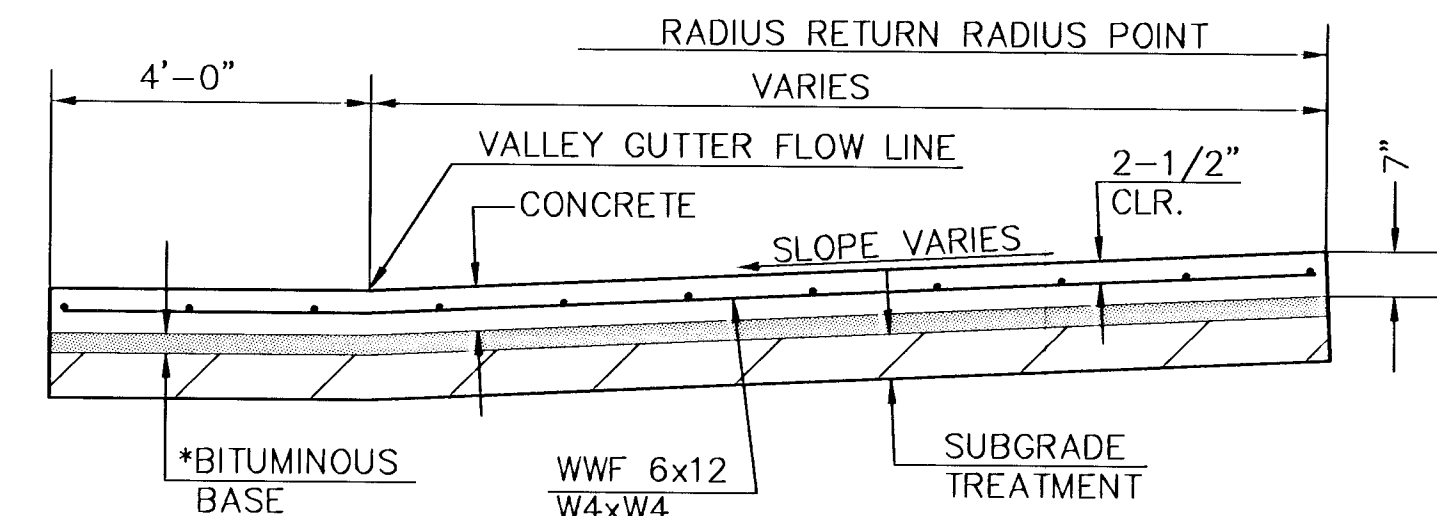
6"x12" W4xW4 WIRE FABRIC REINFORCING SHALL BE PLACED SUCH THAT THE WIRES WITH THE 6" SPACING WILL RUN PARALLEL WITH THE LONGITUDINAL JOINT.



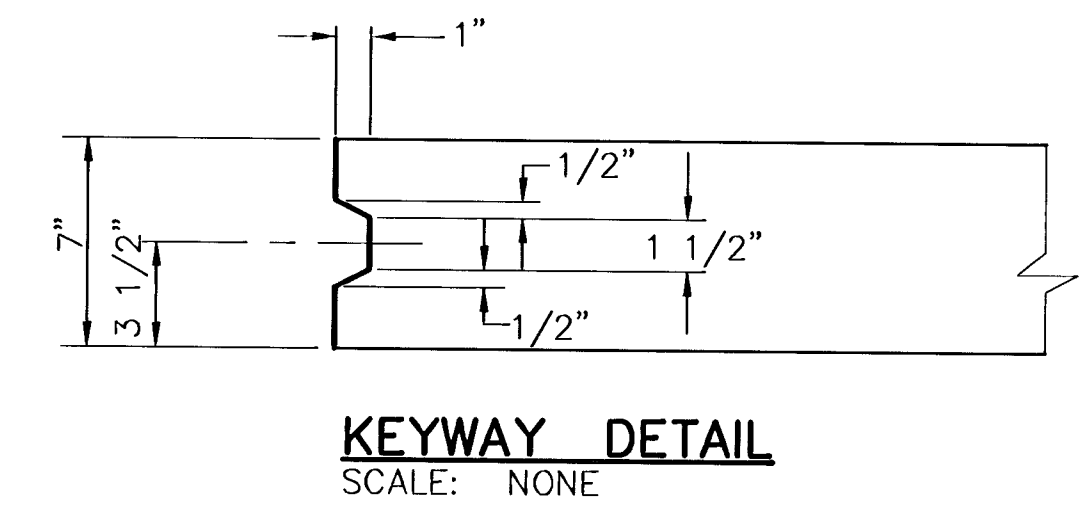
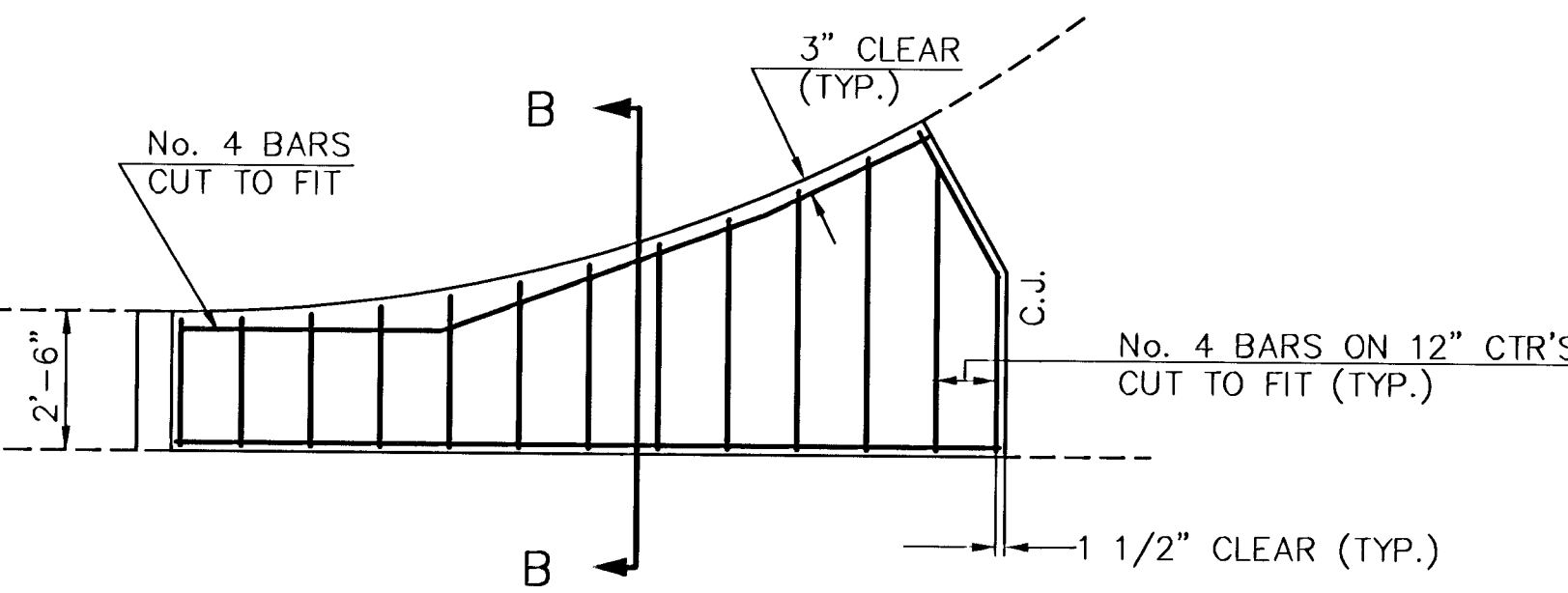
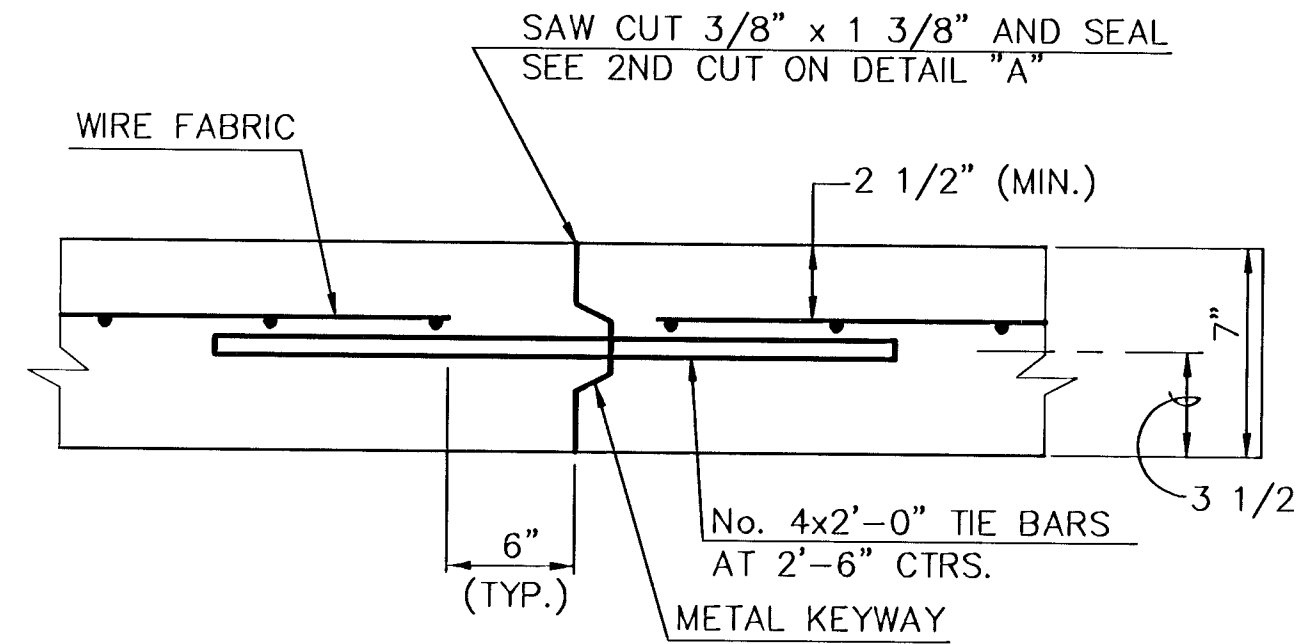
NOTE:  
ALL CONCRETE VALLEY GUTTER REINFORCEMENT SHALL BE ADEQUATELY SUPPORTED BY BAR CHAIRS IN THE REQUIRED POSITION UNLESS APPROVED OTHERWISE BY THE ENGINEER.  
\*NOT TO BE USED WITH CRUSHED ROCK BASE.



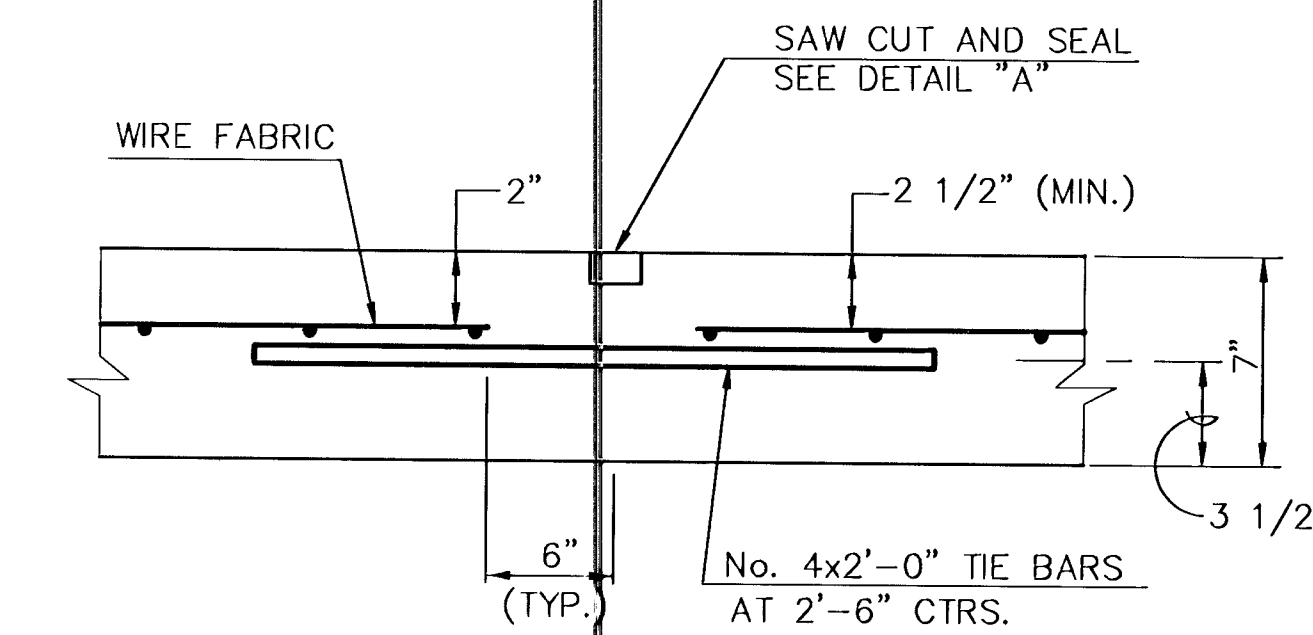
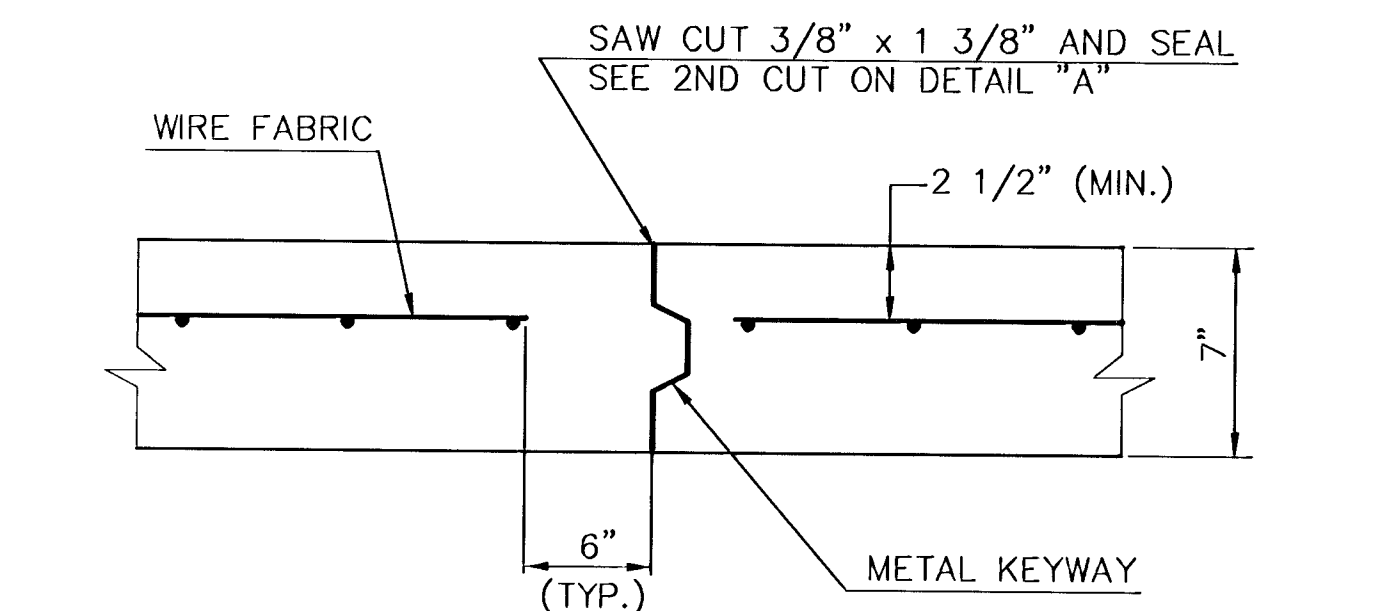
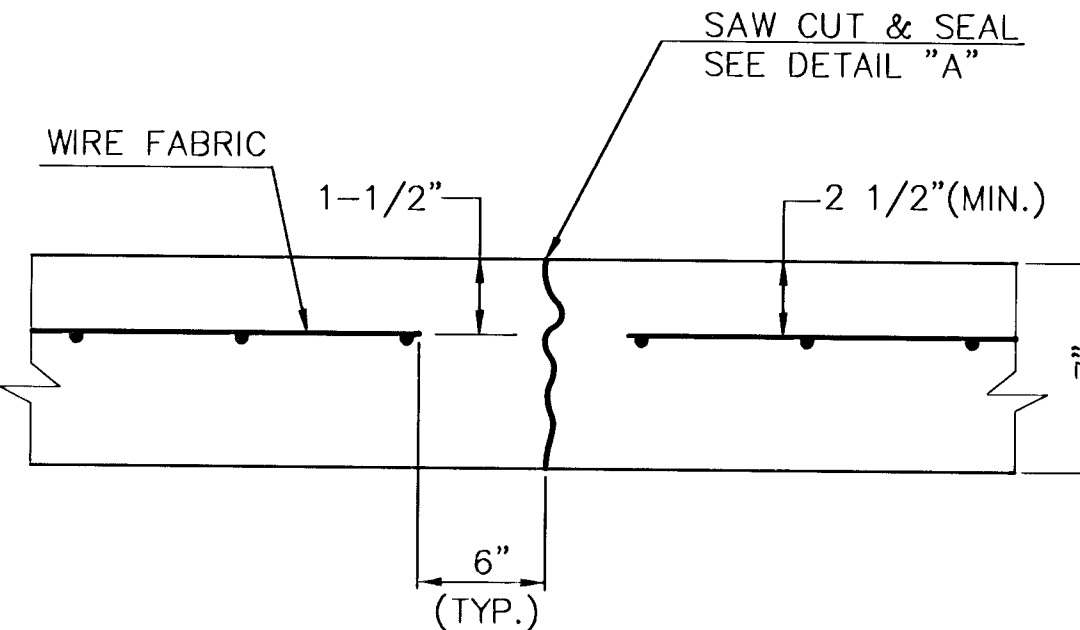
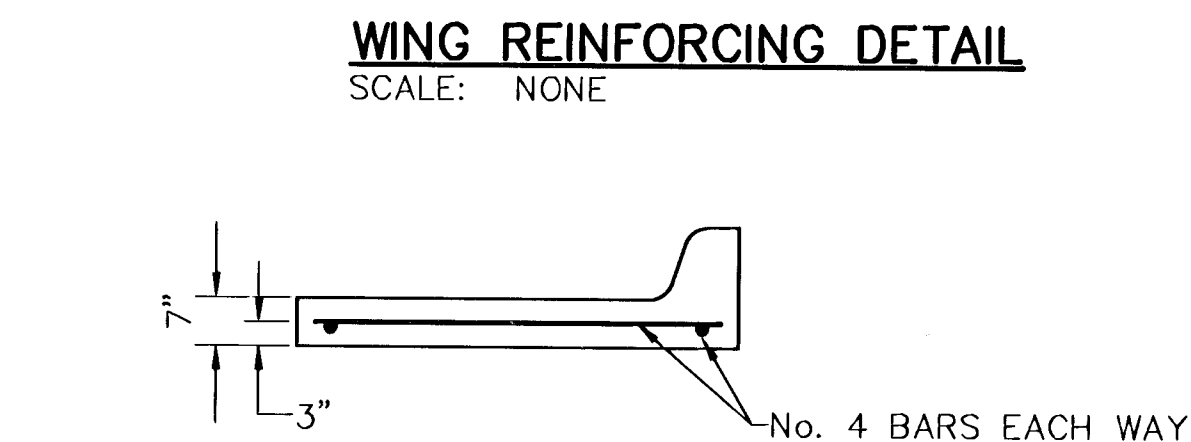
NOTE:  
THE COST OF ALL WORK INDICATED ON THIS DETAIL SHALL BE INCLUDED IN THE UNIT PRICE BID FOR WHEEL CHAIR RAMP WHICH PRICE SHALL INCLUDE ALL COSTS OF REMOVING AND RECONSTRUCTING EXISTING COMBINED CURB AND GUTTER, COMPACTION OF SUBGRADE AND NECESSARY AREA GRADING.



NOTE:  
EXTRA THICKNESS TO BE SUBSIDIARY TO PRICE OF SQ. YDS. PAVEMENT.



NOTE:  
SAW CUT 3/8" x 1 3/8" AND SEAL SEE 2ND CUT ON DETAIL "A"



LEGEND  
C.J. IDENTIFIES CONTRACTION JOINT  
L.J. IDENTIFIES LONGITUDINAL JOINT

VALLEY GUTTER & MISC. DETAILS  
**CEDAR VIEW SECOND**

PROJECT NUMBER  
472-83300

4/25  
SHEET/25