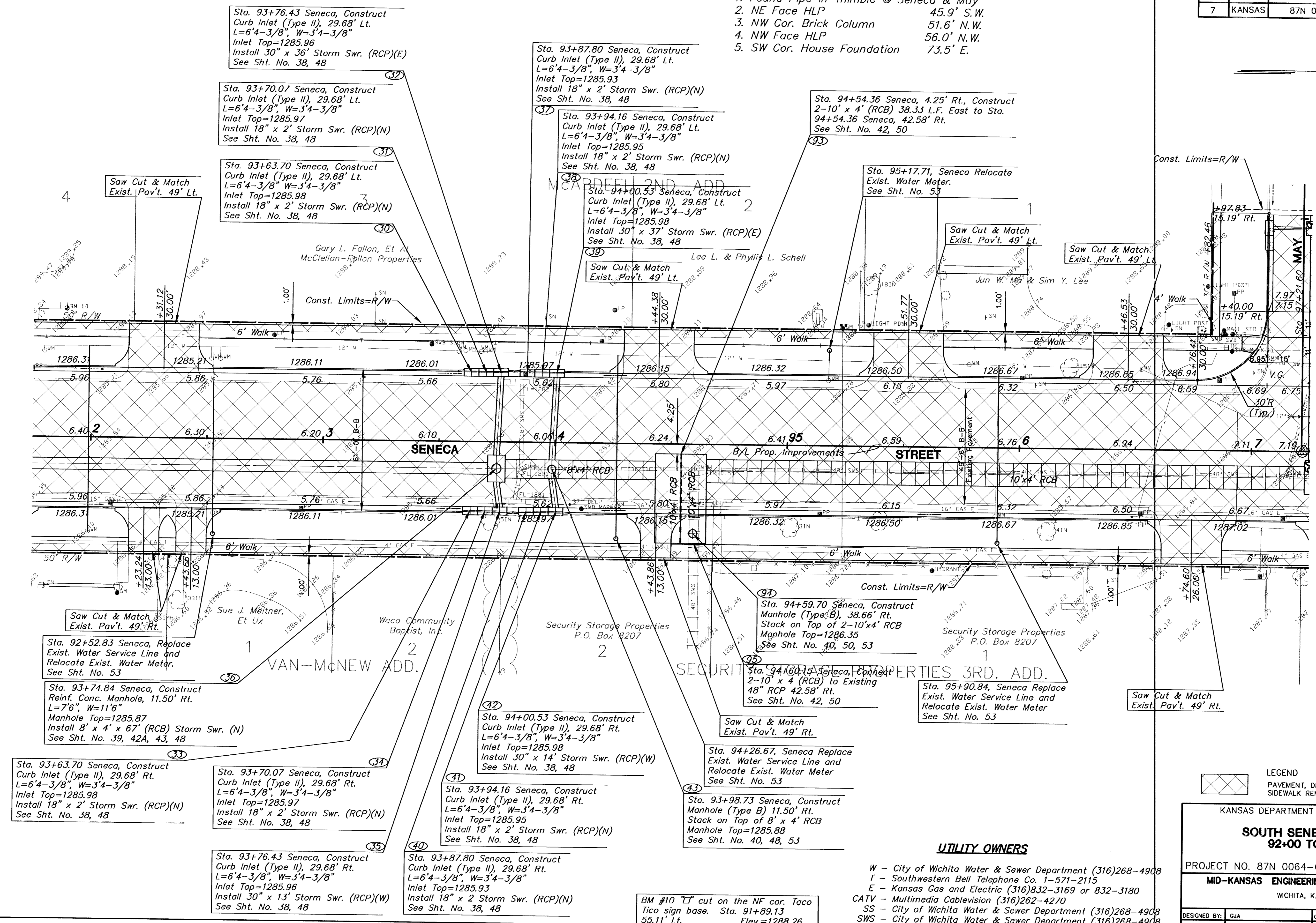


FHWA REG NO.	STATE	PROJECT NO.	YEAR	SHEET NO.	SHEETS
7	KANSAS	87N 0064-01	1997	9	130

- P.I. STA. 97+21.91
 E 1/4 Sec. 31, T27S, R1E
 1. Found Pipe in Thimble @ Seneca & May
 2. NE Face HLP 45.9' S.W.
 3. NW Cor. Brick Column 51.6' N.W.
 4. NW Face HLP 56.0' N.W.
 5. SW Cor. House Foundation 73.5' E.



Sta. 93+76.43 Seneca, Construct Curb Inlet (Type II), 29.68' Lt. L=6'4-3/8", W=3'4-3/8" Inlet Top=1285.96 Install 30" x 36" Storm Swr. (RCP)(E) See Sht. No. 38, 48

Sta. 93+70.07 Seneca, Construct Curb Inlet (Type II), 29.68' Lt. L=6'4-3/8", W=3'4-3/8" Inlet Top=1285.97 Install 18" x 2' Storm Swr. (RCP)(N) See Sht. No. 38, 48

Sta. 93+63.70 Seneca, Construct Curb Inlet (Type II), 29.68' Lt. L=6'4-3/8", W=3'4-3/8" Inlet Top=1285.98 Install 18" x 2' Storm Swr. (RCP)(N) See Sht. No. 38, 48

Sta. 93+87.80 Seneca, Construct Curb Inlet (Type II), 29.68' Lt. L=6'4-3/8", W=3'4-3/8" Inlet Top=1285.93 Install 18" x 2' Storm Swr. (RCP)(N) See Sht. No. 38, 48

Sta. 93+94.16 Seneca, Construct Curb Inlet (Type II), 29.68' Lt. L=6'4-3/8", W=3'4-3/8" Inlet Top=1285.95 Install 18" x 2' Storm Swr. (RCP)(N) See Sht. No. 38, 48

Sta. 94+00.53 Seneca, Construct Curb Inlet (Type II), 29.68' Lt. L=6'4-3/8", W=3'4-3/8" Inlet Top=1285.98 Install 30" x 37" Storm Swr. (RCP)(E) See Sht. No. 38, 48

Sta. 94+54.36 Seneca, 4.25' Rt., Construct 2-10' x 4' (RCB) 38.33 L.F. East to Sta. 94+54.36 Seneca, 42.58' Rt. See Sht. No. 42, 50

Sta. 95+17.71, Seneca Relocate Exist. Water Meter. See Sht. No. 53

Sta. 92+52.83 Seneca, Replace Exist. Water Service Line and Relocate Exist. Water Meter. See Sht. No. 53

Sta. 93+74.84 Seneca, Construct Reinf. Conc. Manhole, 11.50' Rt. L=7'6", W=11'6" Manhole Top=1285.87 Install 8' x 4' x 67" (RCB) Storm Swr. (N) See Sht. No. 39, 42A, 43, 48

Sta. 93+63.70 Seneca, Construct Curb Inlet (Type II), 29.68' Rt. L=6'4-3/8", W=3'4-3/8" Inlet Top=1285.98 Install 18" x 2' Storm Swr. (RCP)(N) See Sht. No. 38, 48

Sta. 93+70.07 Seneca, Construct Curb Inlet (Type II), 29.68' Rt. L=6'4-3/8", W=3'4-3/8" Inlet Top=1285.97 Install 18" x 2' Storm Swr. (RCP)(N) See Sht. No. 38, 48

Sta. 93+76.43 Seneca, Construct Curb Inlet (Type II), 29.68' Rt. L=6'4-3/8", W=3'4-3/8" Inlet Top=1285.96 Install 30" x 13' Storm Swr. (RCP)(W) See Sht. No. 38, 48

Sta. 93+87.80 Seneca, Construct Curb Inlet (Type II), 29.68' Rt. L=6'4-3/8", W=3'4-3/8" Inlet Top=1285.93 Install 18" x 2' Storm Swr. (RCP)(N) See Sht. No. 38, 48

Sta. 94+00.53 Seneca, Construct Curb Inlet (Type II), 29.68' Rt. L=6'4-3/8", W=3'4-3/8" Inlet Top=1285.98 Install 30" x 14' Storm Swr. (RCP)(W) See Sht. No. 38, 48

Sta. 94+26.67, Seneca Replace Exist. Water Service Line and Relocate Exist. Water Meter See Sht. No. 53

Sta. 93+98.73 Seneca, Construct Manhole (Type B) 11.50' Rt. Stack on Top of 8' x 4' RCB Manhole Top=1285.88 See Sht. No. 40, 48, 53

Sta. 94+59.70 Seneca, Construct Manhole (Type B), 38.66' Rt. Stack on Top of 2-10'x4' RCB Manhole Top=1286.35 See Sht. No. 40, 50, 53

Sta. 94+60.15 Seneca, Construct 2-10' x 4' (RCB) to Existing 48" RCP 42.58' Rt. See Sht. No. 42, 50

Sta. 95+90.84, Seneca Replace Exist. Water Service Line and Relocate Exist. Water Meter See Sht. No. 53

BM #10 "L" cut on the NE cor. Taco Tico sign base. Sta. 91+89.13 Elev.=1288.26

LEGEND
 PAVEMENT, DRIVEWAY AND/OR SIDEWALK REMOVAL.

KANSAS DEPARTMENT OF TRANSPORTATION

SOUTH SENECA STREET
 92+00 TO 97+00

PROJECT NO. 87N 0064-01 SEDGWICK CO.

MID-KANSAS ENGINEERING CONSULTANTS, INC.
 WICHITA, KANSAS

DESIGNED BY: GJA CHECKED BY: GJA
 DRAWN BY: WJN DATE: 8/95 SHEET 9 OF 130

- UTILITY OWNERS**
- W - City of Wichita Water & Sewer Department (316)268-4908
 - T - Southwestern Bell Telephone Co. 1-571-2115
 - E - Kansas Gas and Electric (316)832-3169 or 832-3180
 - CATV - Multimedia Cablevision (316)262-4270
 - SS - City of Wichita Water & Sewer Department (316)268-4908
 - SWS - City of Wichita Water & Sewer Department (316)268-4908

H:\CIVIL\SENECA\9405\PAVE\940502E12.Fr: May 30 10:51:33 1997