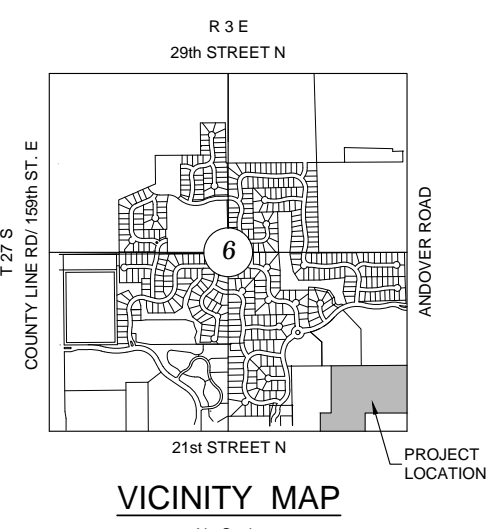
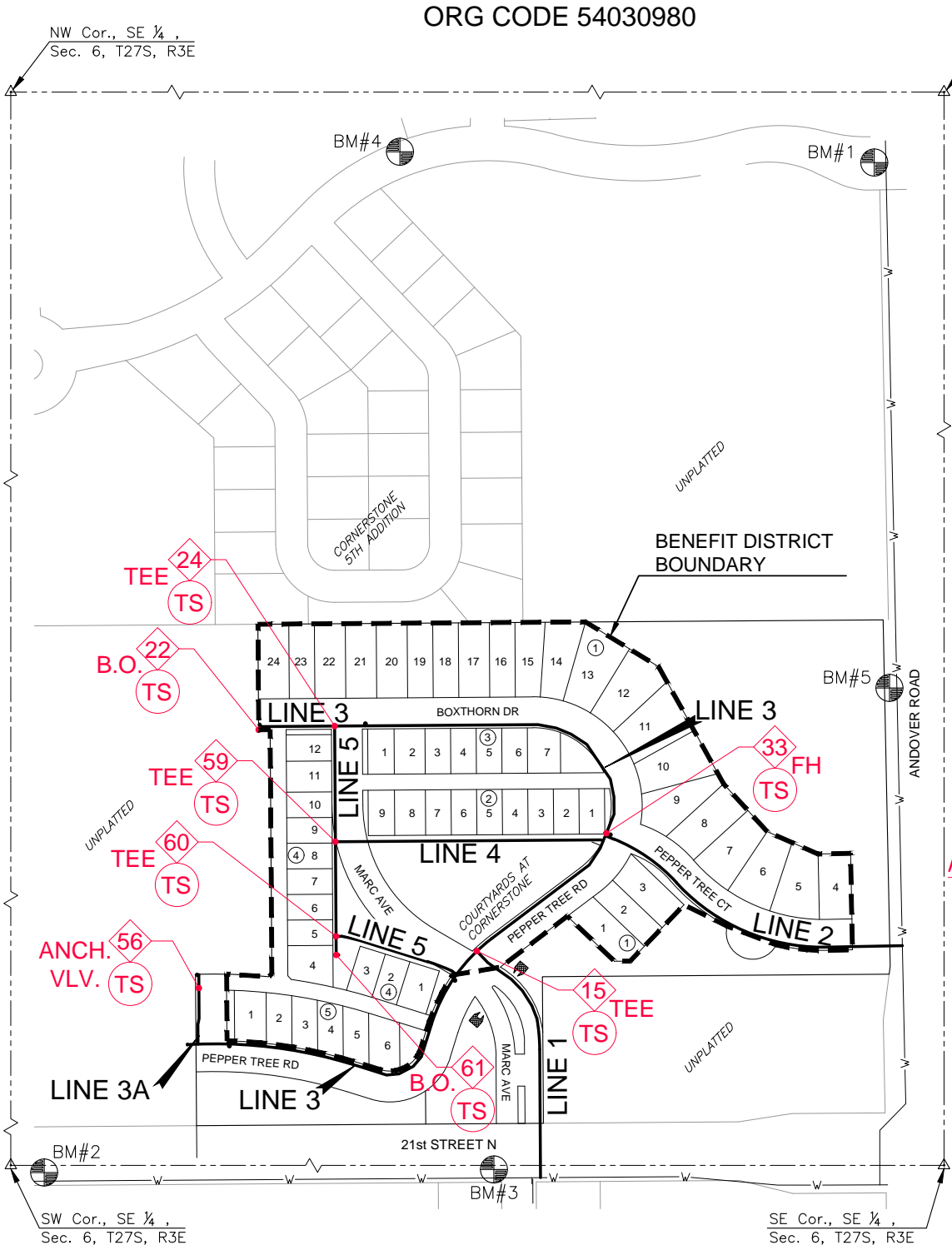


PROJECT: 2022-016298PPW PERFECTION: CORNERSTONE001 210270 CAD:SHSUS CIVIL:WTR - PPW0210270 PPW1 TITLE SHEET DWG

- 1. THE CONTRACTOR SHALL COMPLY WITH ALL APPLICABLE SAFETY REGULATIONS. ALL CONSTRUCTION SHALL BE COMPLETED FOLLOWING CURRENT CITY STANDARD SPECIFICATIONS AND SPECIAL PROVISIONS.
2. CONTRACTOR WILL BE REQUIRED TO PROVIDE NOTICE TO UTILITY COMPANIES A MINIMUM OF SEVENTY-TWO (72) HOURS PRIOR TO ANY EXCAVATION, AS FOLLOWS:
KANSAS ONE-CALL 687-2470
THE CONTRACTOR MUST NOTIFY THE FOLLOWING IN CASE OF AN EMERGENCY:
AT&T 1-800-246-8464
BLACK HILLS ENERGY (GAS) 1-800-694-6869
CITY OF WICHITA WATER & SEWER 1-316-219-8921
CITY OF WICHITA STORMWATER 1-316-268-4090
CITY OF WICHITA TRAFFIC 1-316-268-4034
COX COMMUNICATIONS 1-888-249-5530
KANSAS GAS SERVICE 1-888-482-4950
EVERGY 1-800-544-4857
3. UTILITY SERVICE LINES, POLES, ETC. ARE TO BE ADJUSTED AS NECESSARY BY OTHERS PRIOR TO CONSTRUCTION UNLESS THE PLANS SPECIFICALLY CALL FOR THEIR ADJUSTMENT BY THE CONTRACTOR OR UNLESS THE PLANS SPECIFICALLY IDENTIFY A UTILITY TO BE ADJUSTED BY ITS OWNER DURING CONSTRUCTION. EXISTING UTILITIES AND THEIR LOCATION, AS SHOWN ON THE PLANS, REPRESENT THE BEST INFORMATION OBTAINABLE FOR DESIGN. THE CONTRACTOR WILL BE REQUIRED TO WORK AROUND EXISTING UTILITIES WITHIN THE RIGHT-OF-WAY WHICH DO NOT CONFLICT WITH PROPOSED CONSTRUCTION.
4. RUBBLE FROM THE REMOVAL OF MISCELLANEOUS STRUCTURES AND EXCESS EXCAVATION WHICH IS TO BE WASTED SHALL BE DISPOSED OF ON SITES TO BE PROVIDED BY THE CONTRACTOR. THESE SITES SHALL BE APPROVED BY THE ENGINEER AS TO SUITABILITY, APPEARANCE AND SITE LOCATION. LOCATIONS, IN THE OPINION OF THE ENGINEER, THAT WILL LEAVE AN UNSIGHTLY APPEARANCE WILL NOT BE APPROVED. ALL DISPOSAL SITES MUST BE APPROVED BY THE KANSAS DEPARTMENT OF HEALTH AND ENVIRONMENT. MATERIAL EITHER STOCKPILED OR DISPOSED OF IN A FLOOD PLAIN WILL REQUIRE A KANSAS STATE BOARD OF AGRICULTURE PERMIT. ANY MATERIAL DUMPED IN WATERS OF THE UNITED STATES OR WETLANDS IS SUBJECT TO U.S. CORPS OF ENGINEERS PERMITTING REGULATIONS. ANY MATERIAL BURIED OR STOCKPILED BEYOND APPROVED CONSTRUCTION LIMITS WILL REQUIRE ADDITIONAL ARCHAEOLOGICAL INVESTIGATIONS UNLESS BURIED IN A PREVIOUSLY APPROVED BORROW LOCATION.
5. TREES AND SHRUBS IN PUBLIC RIGHT-OF-WAY WHICH ARE IN DIRECT CONFLICT WITH PROPOSED NEW CONSTRUCTION SHALL BE REMOVED BY THE CONTRACTOR WITH THE CITY ENGINEER'S APPROVAL. TREES AND SHRUBS WHICH ARE NOT IN DIRECT CONFLICT WITH PROPOSED NEW CONSTRUCTION SHALL BE SAVED AND PROTECTED FROM DAMAGE.
6. THE CONTRACTOR SHALL GIVE ALL PROPERTY OWNERS AND/OR TENANTS OF DEVELOPED PROPERTY ADJUTING THE CONSTRUCTION OF THIS PROJECT A MINIMUM OF TEN (10) DAYS NOTICE PRIOR TO START OF CONSTRUCTION.
7. THE CONTRACTOR SHALL BE RESPONSIBLE FOR PRESERVING PROPERTY IRONS. THE CONTRACTOR WILL BE REQUIRED TO RE-ESTABLISH ANY PROPERTY IRONS WHICH ARE DAMAGED OR DESTROYED BY HIS CONSTRUCTION OPERATIONS. SUCH IRONS SHALL BE RE-ESTABLISHED BY A LICENSED LAND SURVEYOR IN ACCORDANCE WITH STATE LAWS.
8. THE ENGINEERING DIVISION SHALL FIELD LOCATE WATER VALVES ONE TIME DURING CONSTRUCTION WHEN REQUESTED BY THE CONTRACTOR. IT SHALL BE THE CONTRACTOR'S RESPONSIBILITY TO PRESERVE SUCH FIELD LOCATIONS DURING THE CONSTRUCTION PROCESS. WATER VALVES, VALVE BOXES OR FIRE HYDRANTS DAMAGED DURING CONSTRUCTION SHALL BE REPAIRED BY CONTRACTOR AT HIS OWN EXPENSE. VALVE BOXES AND WATER METERS WITHIN THE PROJECT LIMITS SHALL BE ADJUSTED TO MATCH FIELD GRADES BY THE CONTRACTOR.
9. THE CONTRACTOR SHALL NOTIFY THE INSPECTING ENGINEER AND DAWNITA REINHARDT AT 650-0740 WITH THE CITY OF WICHITA WITH THE ANTICIPATED CONSTRUCTION START DATE AND NOTIFY THEM OF PROJECT COMPLETION. STAKING AND INSPECTION FOR THIS PROJECT WILL BE THE RESPONSIBILITY OF THE CONTRACTOR.
10. IF TRAFFIC WILL BE IMPACTED BY CONSTRUCTION, A TRAFFIC CONTROL PLAN MUST BE SUBMITTED AND APPROVED BY THE CITY TRAFFIC ENGINEER BEFORE CONSTRUCTION CAN BEGIN. THE CONTRACTOR SHALL BE RESPONSIBLE FOR ALL TRAFFIC CONTROL MEASURES TO FACILITATE CONSTRUCTION. ALL CONSTRUCTION ZONE MARKINGS AND SIGNAGE SHALL CONFORM TO THE LATEST VERSION OF THE MANUAL ON UNIFORM TRAFFIC CONTROL DEVICES (MUTCD) AS PUBLISHED BY THE US DEPT. OF TRANSPORTATION, FEDERAL HIGHWAY ADMINISTRATION. ALL COSTS ASSOCIATED WITH CONSTRUCTION MARKINGS AND SIGNAGE SHALL BE THE CONTRACTOR'S RESPONSIBILITY.
11. ALL ELEVATIONS SHOWN ARE NGVD 29.
12. ALL AREAS DISTURBED DURING CONSTRUCTION THAT WILL NOT BE UNDER PROPOSED PAVEMENT SHALL BE RESTORED TO MATCH EXISTING CONDITIONS.
13. ALL APPLICABLE FEES (TAP, EQUITY, IN LIEU OF A MAIN BENEFIT) MUST BE PAID BEFORE ANY CONNECTIONS CAN BE MADE ON THIS PROJECT. QUOTES CAN BE OBTAINED ON FEES BY CALLING 316-268-4555.
14. CITY MAINTENANCE OF WATER MAINS ENDS AT RIGHT-OF-WAY OR EASEMENT LINE OR WITHIN TWO FEET OF VAULT.
15. MAINTAIN A MINIMUM OF 10-FOOT HORIZONTAL SEPARATION BETWEEN ALL WATER LINES (MAINS, SERVICES, AND FIRE HYDRANTS) AND ALL SANITARY SEWER LINES (MAINS, SERVICES, AND MANHOLES). ALL SEPARATION DISTANCES ARE TO BE MEASURED FROM EDGE-TO-EDGE, AT THE CLOSEST POINT.
16. MAINTAIN A MINIMUM OF 2-FOOT VERTICAL SEPARATION BETWEEN ALL WATER LINES (MAINS AND SERVICES) AND ALL GRAVITY SANITARY SEWER LINES (MAINS, SERVICES, AND MANHOLES) AT CROSSINGS. ALL SEPARATION DISTANCES ARE TO BE MEASURED FROM EDGE-TO-EDGE, AT THE CLOSEST POINT.
17. MAINTAIN A MINIMUM OF 2-FOOT VERTICAL SEPARATION BETWEEN ALL WATER LINES (MAINS AND SERVICES) AND ALL PRESSURIZED SANITARY SEWER LINES (FORCE MAINS AND SERVICES) AT CROSSINGS. WATER LINES MUST ALWAYS BE PLACED ABOVE PRESSURIZED SANITARY SEWER WHERE THEY CROSS. ALL SEPARATION DISTANCES ARE TO BE MEASURED FROM EDGE-TO-EDGE, AT THE CLOSEST POINT.
18. CONTRACTOR SHALL LIMIT THE EXTENT OF TRENCH OPEN OVERNIGHT AND WEEKENDS TO LESS THAN 50 FEET.
19. EXISTING UTILITIES AND THEIR LOCATION, AS SHOWN ON THE PLANS REPRESENT THE BEST INFORMATION OBTAINABLE FOR DESIGN. LOCATION INFORMATION HAS BEEN OBTAINED FROM THE VARIOUS COMPANIES AND IS EITHER FROM COMPANY UTILITY DRAWINGS OR COMPANY PROVIDED FIELD LOCATIONS. THE PLAN LOCATIONS SHOWN ARE NOT GUARANTEED. ADDITIONAL EXISTING UTILITIES MAY ALSO BE ENCOUNTERED.
20. OPENING AND CLOSING OF WATER VALVES SHALL BE DONE SLOWLY TO PREVENT DAMAGE TO THE WATER DISTRIBUTION SYSTEM FROM WATER HAMMER. ALL VALVES CLOSED BY THE CONTRACTOR MUST BE REOPENED AS NEW CONSTRUCTION PERMITS. THE PROJECT INSPECTOR MUST ASCERTAIN THAT ANY VALVE CLOSED BY THE CONTRACTOR IS REOPENED. THE CONTRACTOR WILL BE PERMITTED TO OPERATE WATER VALVES ONLY WHEN THE PROJECT INSPECTOR ASSIGNED TO THE PROJECT IS PRESENT.
21. THE CONTRACTOR SHALL LAY A TRACER WIRE AND SET TEST STATIONS ALONG ALL WATER PIPE INSTALLED IN ACCORDANCE WITH CITY SPECIFICATIONS AND TRACER WIRE DETAIL ON DETAIL SHEET WL-101, COST IS SUBSIDIARY TO PIPE INSTALLATION.
22. THE CONTRACTOR SHALL PROVIDE MATERIALS FOR TEMPORARY BLOWOFF OF WATERLINES. CONNECTIONS TO THE EXISTING WATERLINE(S) SHALL BE MADE WITH CLEAN, SWABBED PIPE AND FLUSHED UPON COMPLETION OF TIE-INS
23. REQUESTS FOR SHORT TERM WATER INTERRUPTIONS SHALL BE MADE TO THE CITY WATER DISTRIBUTION DIVISION AND WILL BE SUBJECT TO THEIR APPROVAL. THE CONTRACTOR SHALL GIVE WRITTEN NOTICE TO ANY PROPERTY OWNER, BUSINESS, AND/OR TENANTS THAT WILL HAVE WATER SERVICE INTERRUPTED AT LEAST 5 DAYS IN ADVANCE. SUCH NOTIFICATIONS SHOULD INDICATE THE TIME AND DATE THAT THE WATER WILL BE TURNED OFF AND WHEN THE SERVICE WILL BE RESTORED. NO BUSINESS, PROPERTY OWNER, AND/OR TENANTS SHALL BE WITHOUT WATER SERVICE FOR MORE THAN 8 HOURS. PROPOSED TIE IN LOCATIONS WHICH WILL AFFECT WATER SERVICE TO PROPERTY OWNERS SHALL BE PERFORMED DURING NON-PEAK HOURS.
24. THE CONTRACTOR MUST SCHEDULE THE CONNECTIONS TO THE EXISTING MAIN WITH THE CITY SUCH THAT THERE IS A MINIMUM DISRUPTION OF SERVICE. CONNECTIONS SHALL BE MADE DURING PERIODS OF LOW WATER USAGE. THE CONTRACTOR SHALL SUBMIT HIS PROPOSED SCHEDULE FOR COMPLETING WORK FOR CITY APPROVAL AT LEAST 10 DAYS PRIOR TO BEGINNING CONSTRUCTION.
25. DEFLECTIONS AT PIPE JOINT OR COUPLINGS SHALL NOT EXCEED THE PIPE MANUFACTURERS RECOMMENDED MAXIMUM. WHERE DEFLECTIONS ARE GREATER THAN THE MAXIMUM ALLOWED, THE CONTRACTOR SHALL UTILIZE CIMJ LONG SLEEVE OR MULTIPLE JOINTS.
26. ANY EXISTING JOINT EXPOSED DURING EXCAVATION SHALL BE REPLACED IF WITHIN FOUR FEET OF PROPOSED JOINT.
27. VALVES 12 INCH AND LARGER ARE TO BE OPERATED BY THE CITY WATER DISTRIBUTION DIVISION. 48 HOURS OF ADVANCE NOTICE IS REQUIRED WITH THE WATER DISPATCH AT 316-291-8921.
28. ALL WET TAPS SHALL BE INSTALLED BY THE CITY OF WICHITA. THE CONTRACTOR WILL REIMBURSE THE CITY FOR TAPPING FEES.
29. THE CONTRACTOR SHALL PROTECT FROM DAMAGE AND SUPPORT EXISTING UTILITIES THROUGH CONSTRUCTION AS APPROVED BY THE UTILITY OWNER AND THE ENGINEER AT THE CONTRACTOR'S EXPENSE.
30. WORK DONE UNDER THIS PROJECT IS SUBJECT TO THE CITY OF WICHITA REQUIREMENTS FOR "CONSTRUCTION OF INFRASTRUCTURE IMPROVEMENTS BY PRIVATE CONTRACT". THE CONTRACTOR SHALL BE FAMILIAR AND COMPLY WITH ALL OF THE REQUIREMENTS, INCLUDING BONDING, INSPECTION, TESTING, NOTIFICATION, PROVIDING AS-BUILT DRAWINGS, PAYING FOR ALL NECESSARY CONNECTIONS, AND/OR STREET REPAIR FEES AND PROVIDING PIPE MATERIAL AND OTHER CERTIFICATIONS.
31. DEVELOPER FOR THIS PROJECT IS:
PERFECTION SIGNATURE PROPERTIES, LLC
11828 W. CENTRAL, SUITE 124
WICHITA, KS 67212
SCOTT LEHNER/JASON RONK
(316) 729-1900

WATER DISTRIBUTION SYSTEM IMPROVEMENTS
TO SERVE
COURTYARDS AT CORNERSTONE
CITY OF WICHITA PRIVATE PROJECT NO. 2022-016298PPW
THE CITY OF ANDOVER, KANSAS
ORG CODE 54030980



CONTROL POINTS

DATUM: THE HORIZONTAL DATUM IS BASED ON THE KANSAS COORDINATE SYSTEM OF 1983(2011), SOUTH ZONE. COORDINATES SHOWN HAVE BEEN MODIFIED TO THE GROUND USING A COMBINED ADJUSTMENT FACTOR OF 1.0001200144. STATE PLANE COORDINATES CAN BE CALCULATED BY MULTIPLYING THE SHOWN VALUES BY 0.99988.

ALL ELEVATIONS SHOWN ARE BASED ON THE NGVD 29 VERTICAL DATUM, GEOID12B.

BM 1
N: 1701980.843 E: 1707185.916 EL: 1352.12 (NGVD 29)
\*\* CUT IN CURB AT EAST BULLNOSE OF THE ISLAND IN CORNERSTONE PARKWAY, WEST SIDE OF ANDOVER ROAD

BM 2
N: 1700085.616 E: 1705628.779 EL: 1348.78 (NGVD 29)
SQUARE CUT IN CURB AT EAST RETURN OF THE EAST DRIVE TO "LIFE CARE CENTER", SOUTH SIDE OF 21st STREET

BM 3
N: 1700091.611 E: 1706472.426 EL: 1345.44 (NGVD 29)
SQUARE CUT ON NORTHWEST CORNER OF CURB INLET AT THE SOUTHWEST RETURN OF MARC AVENUE AND 21st STREET

BM 4
N: 1702001.018 E: 1706296.090 EL: 1348.76 (NGVD 29)
SQUARE CUT ON EAST SIDE OF CURB INLET ON THE NORTH SIDE OF CORNERSTONE PARKWAY

BM 5
N: 1700995.000 E: 1707214.554 EL: 1342.57 (NGVD 29)
COTTON GIN ON WEST FACE OF 5th POWER POLE SOUTH OF CORNERSTONE PARKWAY, WEST SIDE OF ANDOVER ROAD

NOTE: ALL CONTROL POINTS SHOWN HAVE ELEVATIONS ESTABLISHED USING STANDARD SURVEYING PROCEDURES AND CAN BE USED AS TEMPORARY BENCHMARKS. WHEN USING A CONTROL POINT AS A TEMPORARY BENCHMARK, IT IS RECOMMENDED THAT CROSS-CHECKS BE MADE TO OTHER CONTROL POINTS OR BENCHMARKS TO CONFIRM ELEVATIONS PRIOR TO USE.

AS-BUILT PER PLANS - NOVEMBER 2022

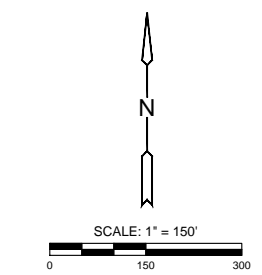
INSPECTED BY: JEFFERSON THERRELL SR.
CONSTRUCTED BY: MIES CONSTRUCTION INC.
SUPERINTENDENT: ALBERT WILLIAMS
SUPPLIER: CORE & MAIN, AMERICAN CAST IRON PIPE COMPANY

INDEX TO DRAWINGS

Table with 2 columns: SHEET NO. and DESCRIPTION. Lists sheets 01 through 16 including Title Sheet, City Water Details, WTR Lines 1-5, Erosion Control Plan, BMP Sheets, and Final Plat.

APPROVED AS NOTED BY WICHITA PUBLIC WORKS ENGINEERING DIVISION & BY ANDOVER FIRE DEPARTMENT. Includes approval signatures for Shawn Mellies, Greg Lolley, and Jose Ocadiz.

NOTE TO CONTRACTORS. Public Property: Inspection and testing for the water line is to be provided by a Licensed Consulting Engineering Firm under contract with the Owner/Developer. Private Property: Installation and testing for the fire protection line is to be performed by a City of Andover licensed fire protection contractor in accordance with the fire codes as adopted by the City of Andover.



NOTE: WATER LINE VALVES TO BE OPERATED BY CONTRACTOR ONLY IF WATER INSPECTOR IS ON SITE.

LEGEND table with 2 columns: Symbol and Description. Shows a dashed line for EXISTING WATER and a solid line for PROPOSED WATER.

NOTE: ALL LINES TO BE INSTALLED BY OTHERS ARE SUBJECT TO MABCD REVIEW.
NOTE: CONTRACTOR TO VERIFY DEPTH AND LOCATION OF EXISTING UTILITIES PRIOR TO CONSTRUCTION.

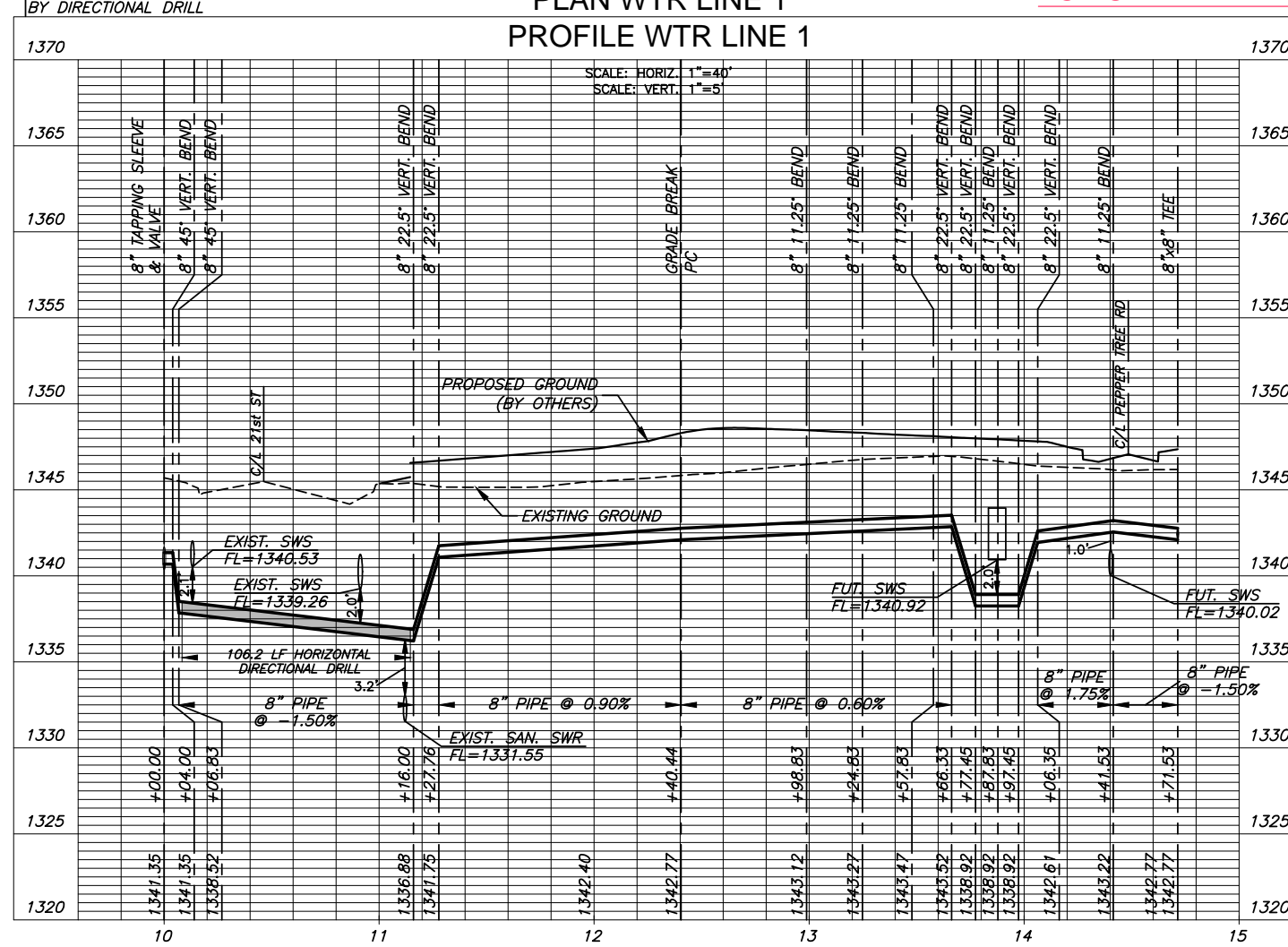
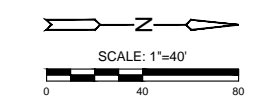
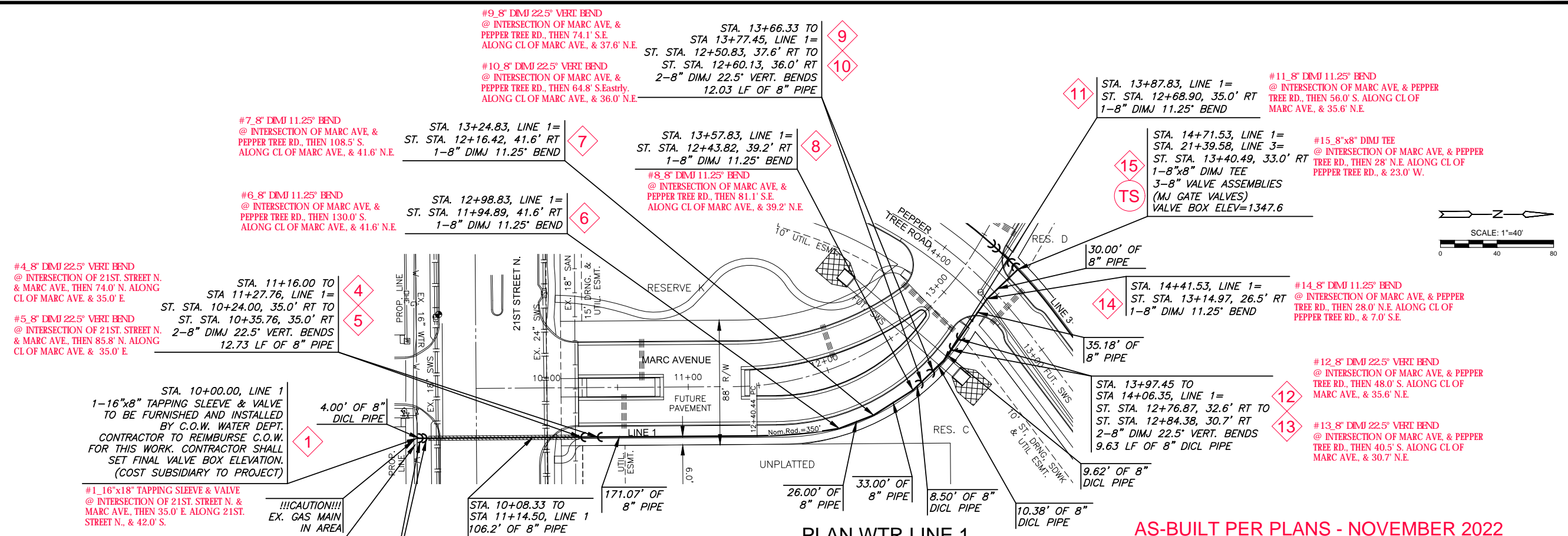
Right margin containing MKEC logo, project title 'COURTYARDS AT CORNERSTONE', location 'ANDOVER, KANSAS', and sheet number '01 OF 16'.

PLOTTED: Wednesday, November 09, 2022 @ 02:51 PM

J:\PROJECTS\2022\12101010270\_PERFECTION\_CORNERSTONE00\_210270\_CAD\SHS\505\_CIVIL\WTR - PPW\0210270\_PPW\_VTR LINE 1.DWG



# WATER DISTRIBUTION SYSTEM IMPROVEMENTS TO SERVE COURTYARDS AT CORNERSTONE ANDOVER, KANSAS



NOTE:  
CONTRACTOR TO VERIFY LOCATION AND ELEVATION OF EXISTING WATER LINE PRIOR TO CONSTRUCTION.

VALVES AND HYDRANTS TO BE SET AT FUTURE FINISHED GRADE. COST OF EARTHWORK AT THESE STRUCTURES IS SUBSIDIARY TO THE PROJECT.

!!!CAUTION!!!  
EX. GAS MAIN IN AREA

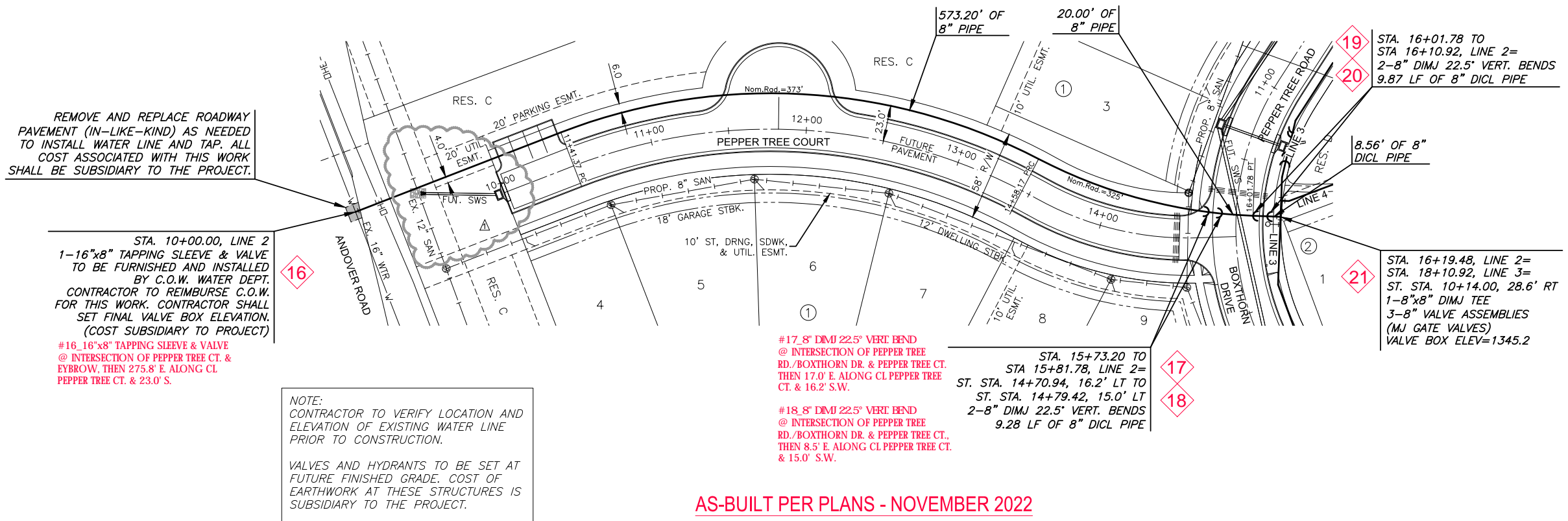
REMOVE AND REPLACE SIDEWALK AND CURB (IN-LIKE-KIND) AS NEEDED TO INSTALL WATER LINE AND TAP. PROVIDE TRAFFIC CONTROL AS NEEDED. ALL COST ASSOCIATED WITH THIS WORK SHALL BE SUBSIDIARY TO THE PROJECT.

©2022 MKEC Engineering All Rights Reserved www.mkec.com  
These drawings and their contents, including, but not limited to, all concepts, designs, & ideas are the exclusive property of MKEC Engineering (MKEC), and may not be used or reproduced in any way without the express consent of MKEC.

WTR LINE 1		
PROJECT NO.	2022-016298PPW	
DATE	JULY 2022	
SCALE	1" = 40'	
DESIGNED	DRAWN	CHECKED
KPG	KPG	KPG
NO.	REVISION	DATE
SHEET NO. 03 OF 16		

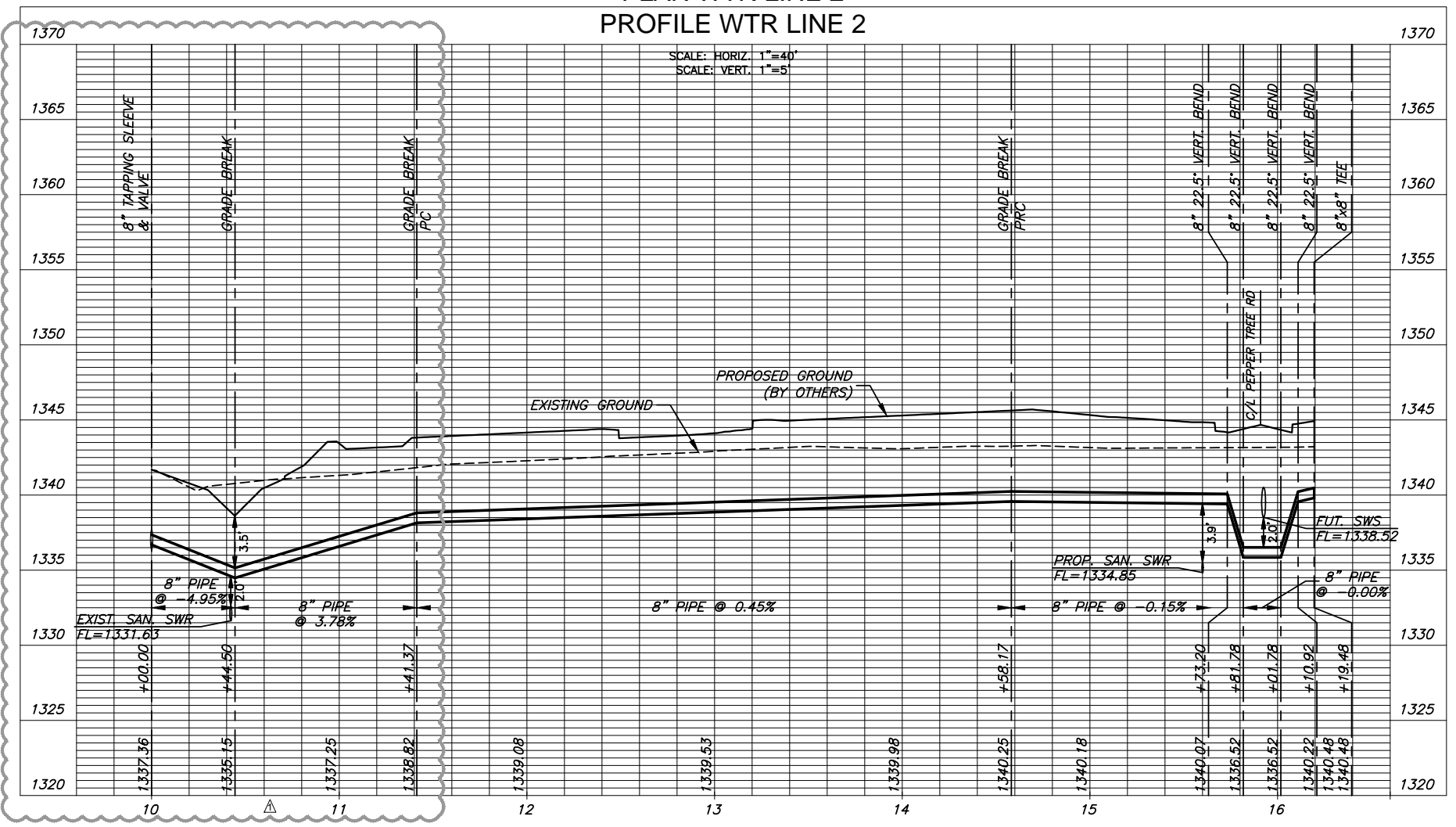
PROJECT: 202212101010270\_PERFECTION\_COURTNEYARDS AT CORNERSTONE 210270 CAD/SHT/SUBS CIVIL/WTR - PPW/02/2022 PPW\_WTR LINE 2.DWG

PROJECT: 202212101010270\_PERFECTION\_COURTNEYARDS AT CORNERSTONE 210270 CAD/SHT/SUBS CIVIL/WTR - PPW/02/2022 PPW\_WTR LINE 2.DWG



AS-BUILT PER PLANS - NOVEMBER 2022

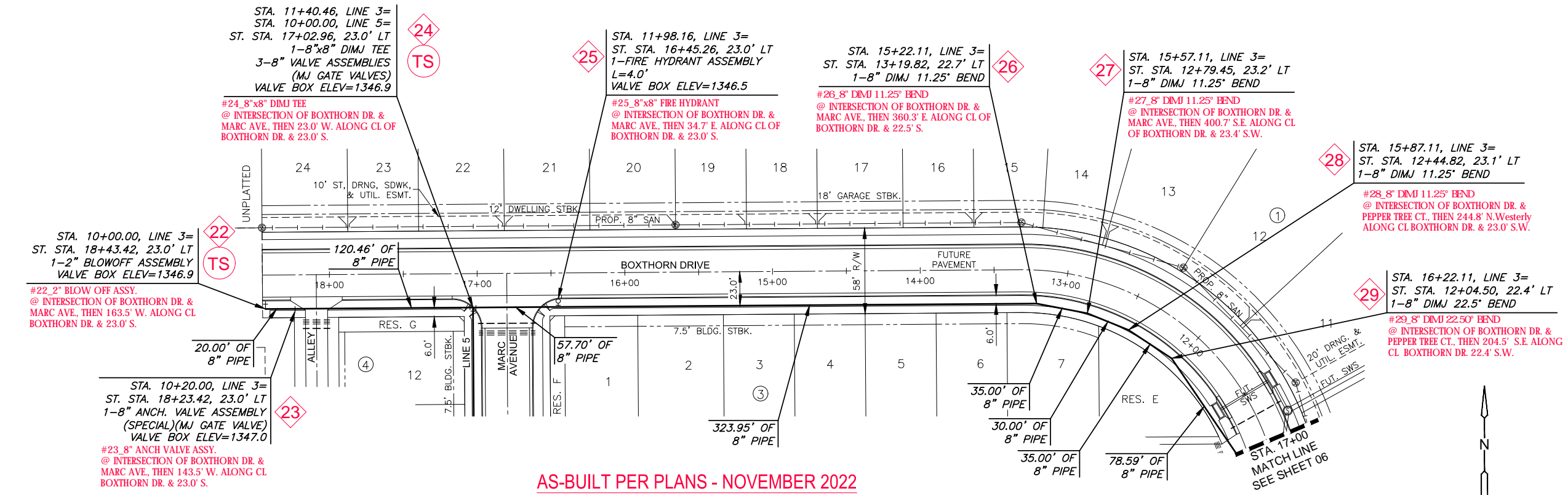
PLAN WTR LINE 2  
PROFILE WTR LINE 2



WATER DISTRIBUTION SYSTEM IMPROVEMENTS TO SERVE  
**COURTYARDS AT CORNERSTONE**  
ANDOVER, KANSAS

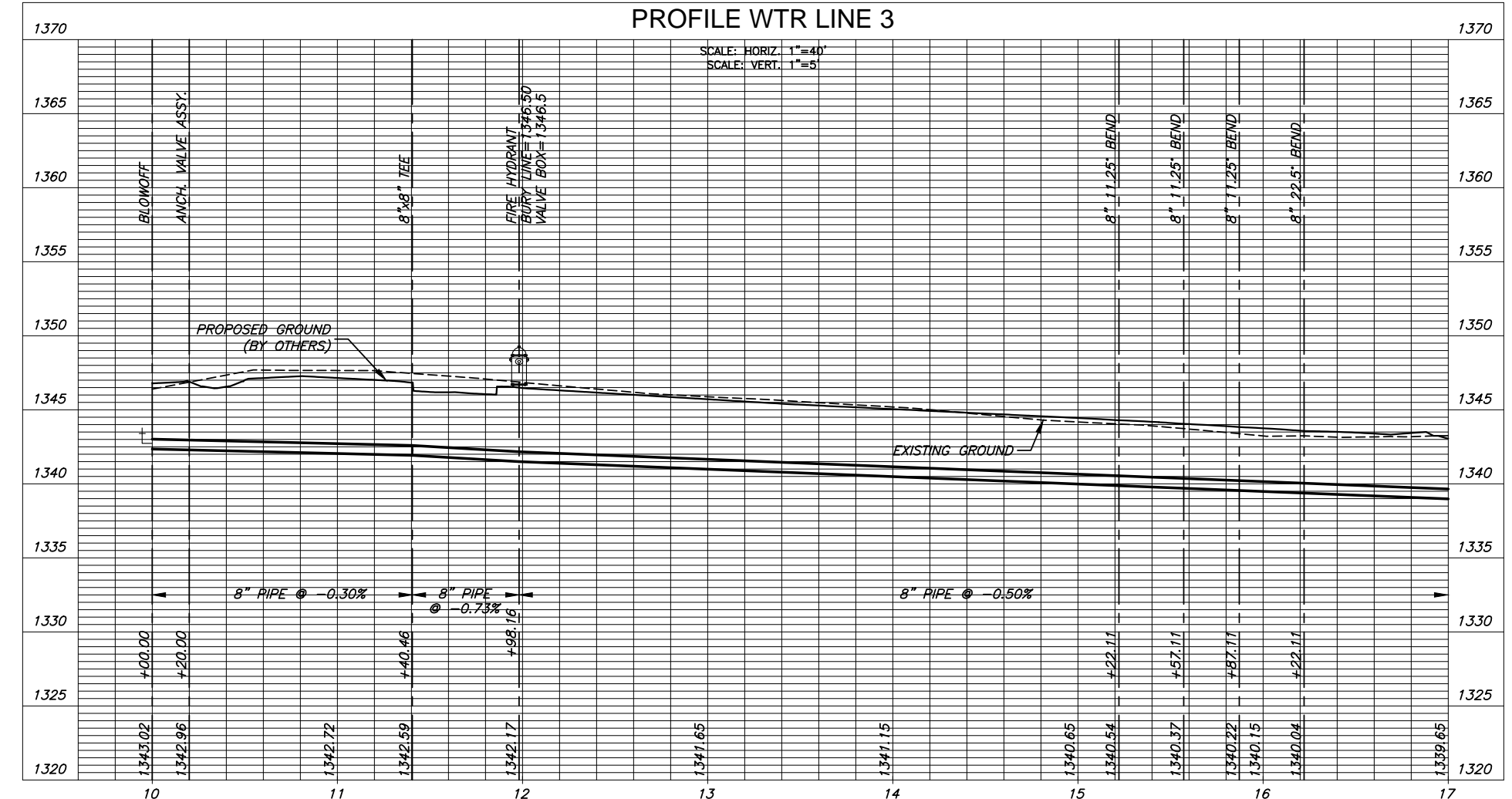
©2022 MKEC Engineering  
All Rights Reserved  
www.mkec.com  
These drawings and their contents, including, but not limited to, all concepts, designs, & ideas are the exclusive property of MKEC Engineering (MKEC), and may not be used or reproduced in any way without the express consent of MKEC.

WTR LINE 2	
PROJECT NO.	2022-016298PPW
DATE	JULY 2022
SCALE	1" = 40'
DESIGNED	DRAWN
KPG	KPG
CHECKED	KPG
NO.	REVISION
1	WTR LINE 2
	DATE
	07/25/22
SHEET NO.	
04 OF 16	

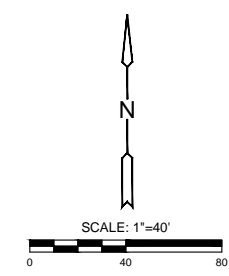


AS-BUILT PER PLANS - NOVEMBER 2022

PLAN WTR LINE 3  
 PROFILE WTR LINE 3



NOTE:  
 CONTRACTOR TO VERIFY LOCATION AND ELEVATION OF EXISTING WATER LINE PRIOR TO CONSTRUCTION.  
 VALVES AND HYDRANTS TO BE SET AT FUTURE FINISHED GRADE. COST OF EARTHWORK AT THESE STRUCTURES IS SUBSIDIARY TO THE PROJECT.



©2022 MKEC Engineering  
 All Rights Reserved  
 www.mkec.com  
 These drawings and their contents, including, but not limited to, all concepts, designs, & ideas are the exclusive property of MKEC Engineering (MKEC), and may not be used or reproduced in any way without the express consent of MKEC.

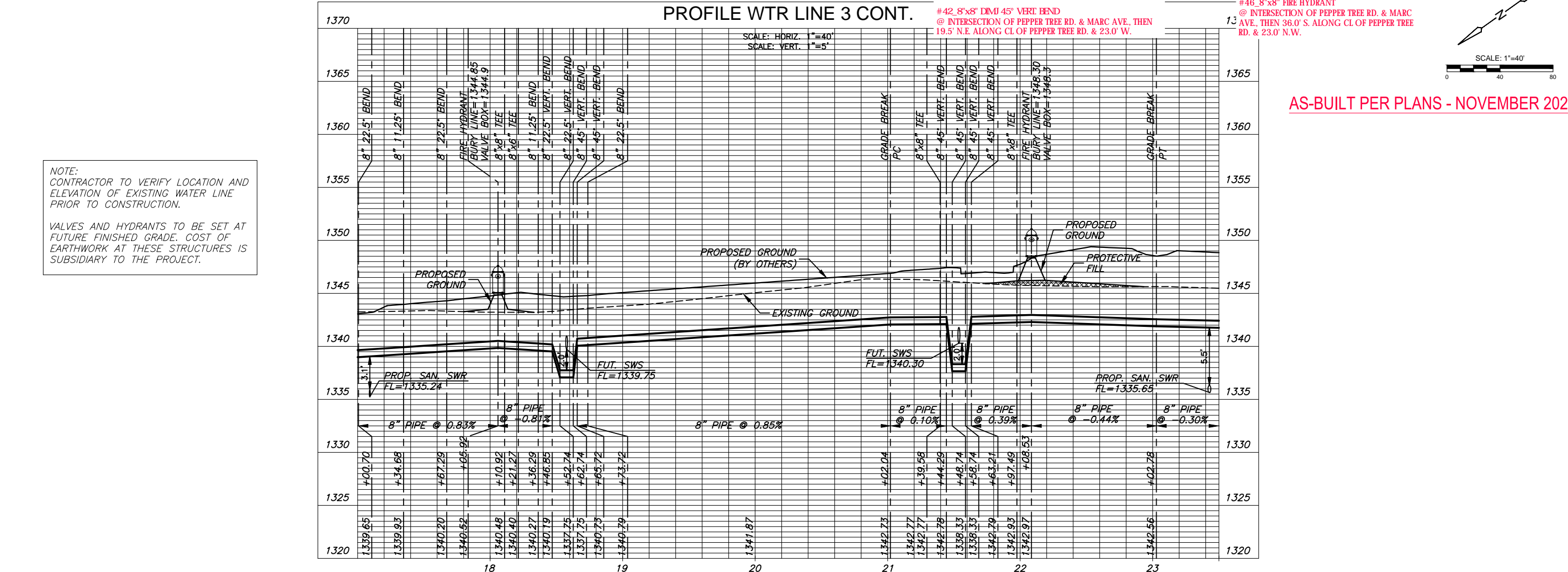
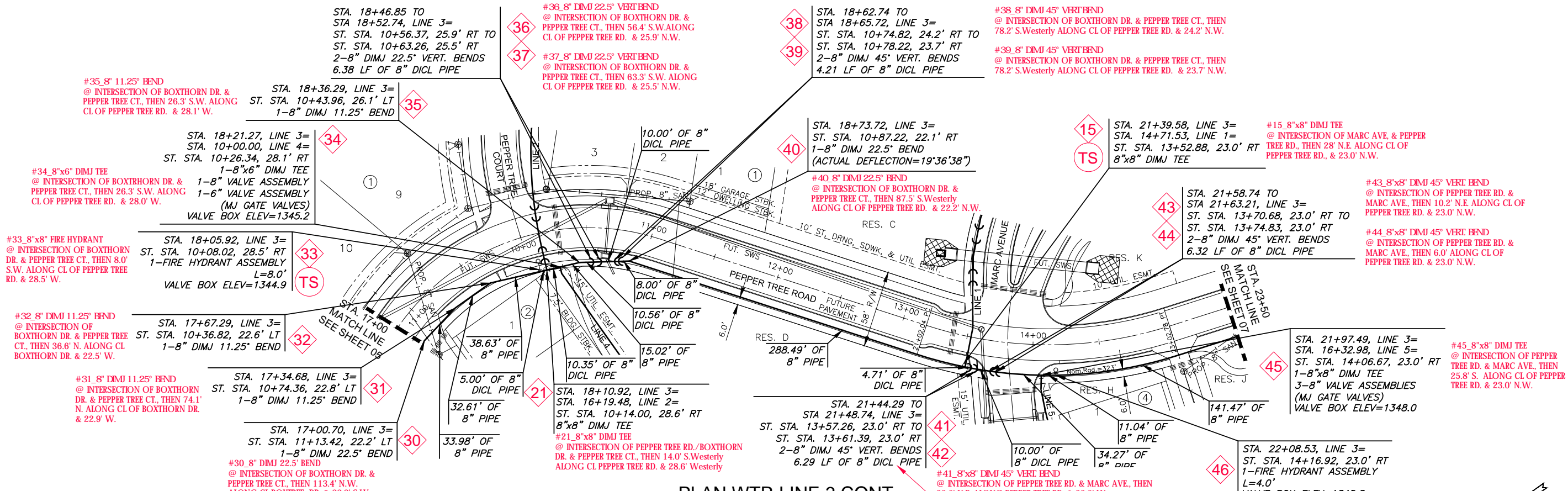
WTR LINE 3		
PROJECT NO.	2022-016298PPW	
DATE	JULY 2022	
SCALE	1" = 40'	
DESIGNED	DRAWN	CHECKED
KPG	KPG	KPG
NO.	REVISION	DATE
SHEET NO. 05 OF 16		



# WATER DISTRIBUTION SYSTEM IMPROVEMENTS TO SERVE COURTYARDS AT CORNERSTONE ANDOVER, KANSAS

©2022 MKEC Engineering All Rights Reserved www.mkec.com  
These drawings and their contents, including, but not limited to, all concepts, designs, & ideas are the exclusive property of MKEC Engineering (MKEC), and may not be used or reproduced in any way without the express consent of MKEC.

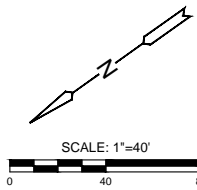
WTR LINE 3 (CONT.)		
PROJECT NO.	2022-016298PPW	
DATE	JULY 2022	
SCALE	1" = 40'	
DESIGNED	DRAWN	CHECKED
KPG	KPG	KPG
NO.	REVISION	DATE
SHEET NO. 06 OF 16		



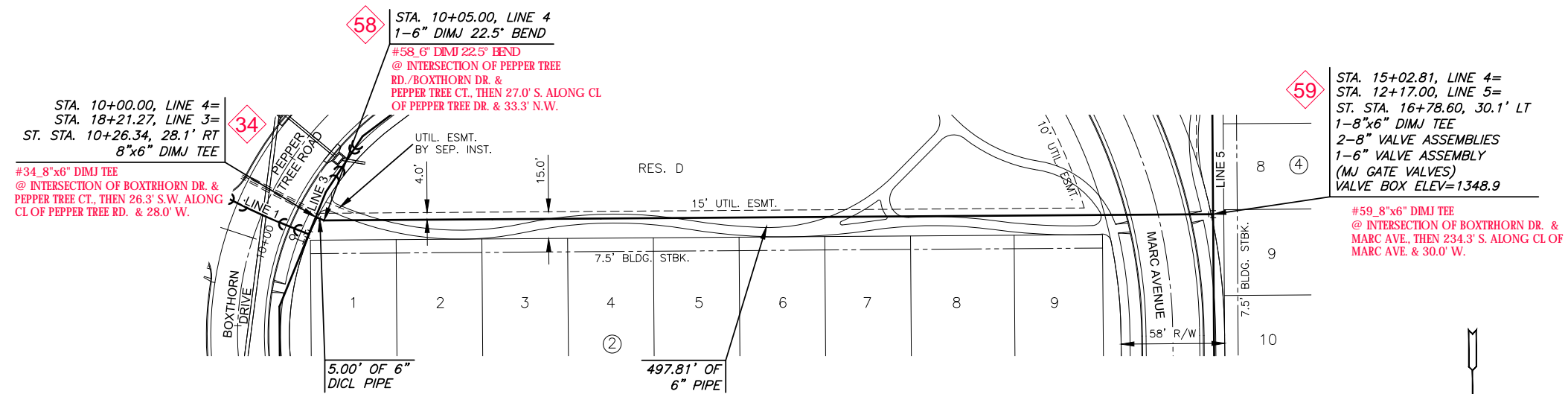
NOTE:  
 CONTRACTOR TO VERIFY LOCATION AND ELEVATION OF EXISTING WATER LINE PRIOR TO CONSTRUCTION.

VALVES AND HYDRANTS TO BE SET AT FUTURE FINISHED GRADE. COST OF EARTHWORK AT THESE STRUCTURES IS SUBSIDIARY TO THE PROJECT.

AS-BUILT PER PLANS - NOVEMBER 2022





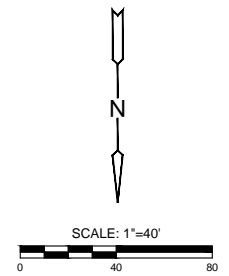
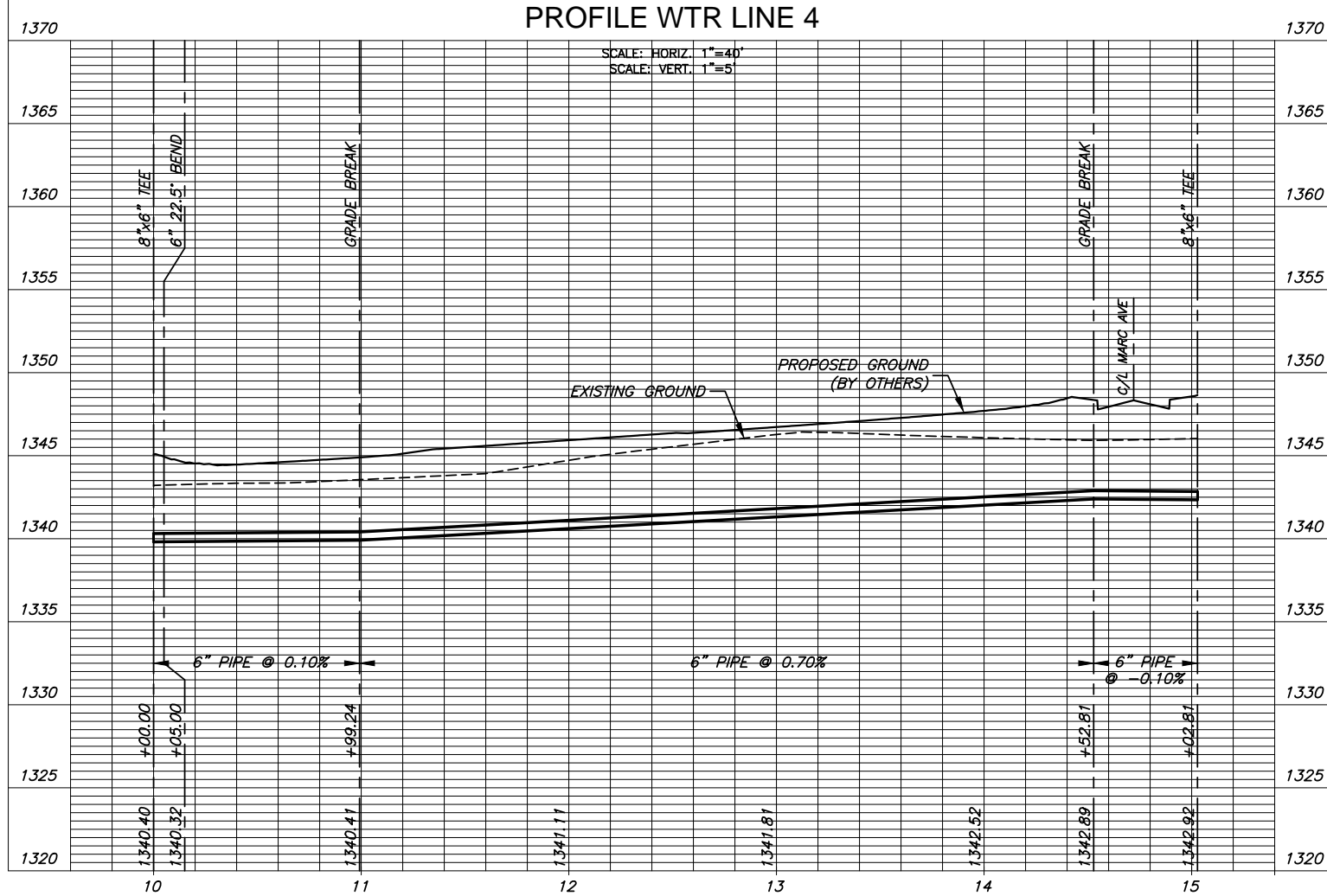


AS-BUILT PER PLANS - NOVEMBER 2022

NOTE:  
CONTRACTOR TO VERIFY LOCATION AND ELEVATION OF EXISTING WATER LINE PRIOR TO CONSTRUCTION.

VALVES AND HYDRANTS TO BE SET AT FUTURE FINISHED GRADE. COST OF EARTHWORK AT THESE STRUCTURES IS SUBSIDIARY TO THE PROJECT.

PLAN WTR LINE 4  
PROFILE WTR LINE 4



©2022 MKEC Engineering  
All Rights Reserved  
www.mkec.com

These drawings and their contents, including, but not limited to, all concepts, designs, & ideas are the exclusive property of MKEC Engineering (MKEC), and may not be used or reproduced in any way without the express consent of MKEC.

WTR LINE 4		
PROJECT NO.	2022-016298PPW	
DATE	JULY 2022	
SCALE	1" = 40'	
DESIGNED	DRAWN	CHECKED
KPG	KPG	KPG
NO.	REVISION	DATE
SHEET NO. 08 OF 16		

