

GENERAL NOTES:

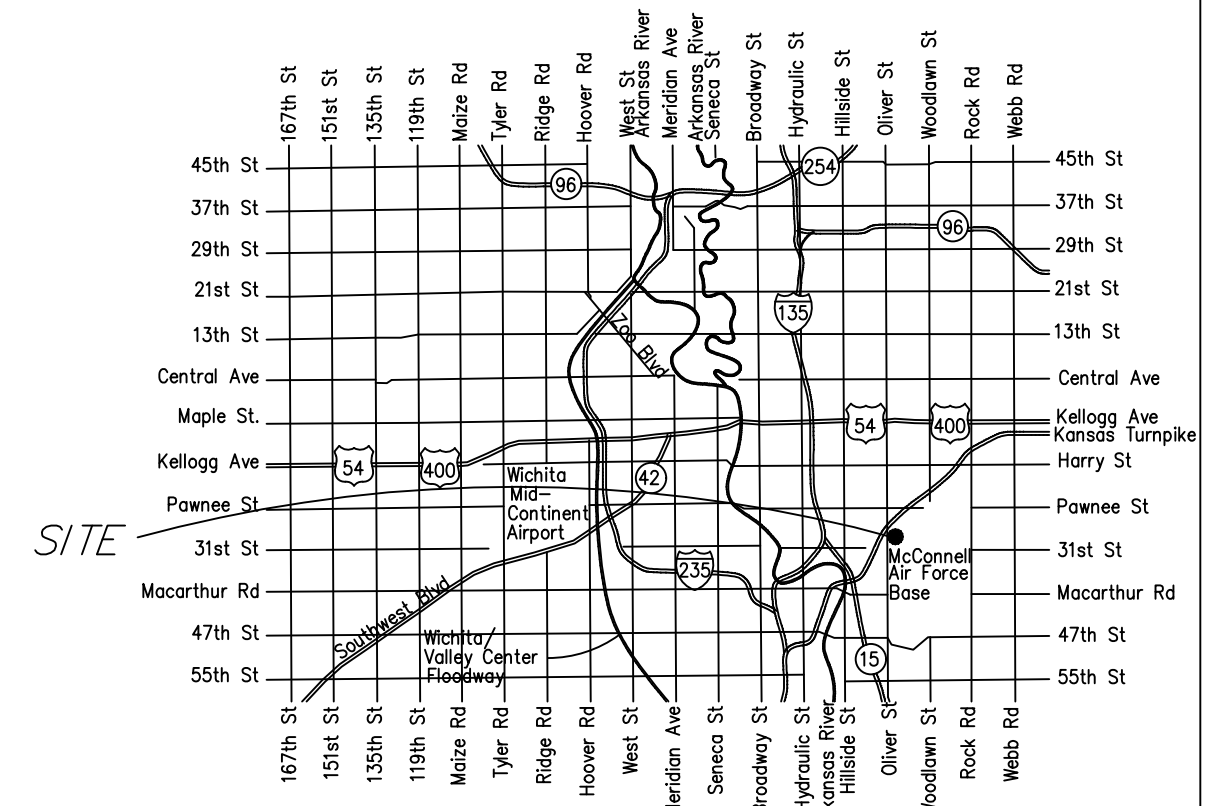
- The Contractor shall comply with all applicable safety regulations. All construction shall be completed following current City Standard Specifications and Special Provisions.
- Contractor will be required to provide notice to utility companies a minimum of seventy-two (72) hours prior to any excavation, as follows:
Kansas One-Call 687-2470
The Contractor must notify the following in case of an emergency:
AT&T 1-800-246-8464
Black Hills Energy 1-800-694-8989
City of Wichita Water & Sewer 1-316-219-8921
City of Wichita Stormwater 1-316-268-4090
City of Wichita Traffic 1-316-268-4034
Cox Communications 1-888-249-3530
Kansas Gas Service 1-888-482-4950
Westar Energy 1-800-544-4857
- Utility service lines, poles, etc. are to be adjusted as necessary by others prior to construction unless the plans specifically call for their adjustment by the Contractor or unless the plans specifically identify a utility to be adjusted by its owner during construction. Existing utilities and their location, as shown on the plans, represent the best information obtainable for design. The Contractor will be required to work around existing utilities within the right-of-way which do not conflict with proposed construction.
- Rubble from the removal of miscellaneous structures and excess excavation which is to be wasted shall be disposed of on sites to be provided by the Contractor. These sites shall be approved by the Engineer as to suitability, appearance and site location. Locations, in the opinion of the Engineer, that will leave an unsightly appearance will not be approved. All disposal sites must be approved by the Kansas Department of Health and Environment. Material either stockpiled or disposed of in a flood plain will require a Kansas State Board of Agriculture permit. Any material dumped in waters of the United States or wetlands is subject to U.S. Corps. of Engineers permitting regulations. Any material buried or stockpiled beyond approved construction limits will require additional archaeological investigations unless buried in a previously approved borrow location.
- Trees and shrubs in public right-of-way which are in direct conflict with proposed new construction shall be removed by the Contractor with the City Engineer's approval. Trees and shrubs which are not in direct conflict with proposed new construction shall be saved and protected from damage.
- The Contractor shall give all property owners and/or tenants of developed property abutting the construction of this project a minimum of ten (10) days notice prior to start of construction.
- The Contractor shall be responsible for preserving property irons. The Contractor will be required to re-establish any property irons which are damaged or destroyed by his construction operations. Such irons shall be re-established by a licensed land surveyor in accordance with state laws.
- The Engineering Division shall field locate water valves one time during construction when requested by the Contractor. It shall be the Contractor's responsibility to preserve such field locations during the construction process. Water valves, valve boxes or fire hydrants damaged during construction shall be repaired by Contractor at his own expense. Valve boxes and water meters within the project limits shall be adjusted to match final grades by the contractor.
- The Contractor shall notify the consultant engineer and Dawnita Reinhardt at 316-650-0740 with the City of Wichita with the anticipated construction start date and notify them of project completion. Staking and inspection for this project will be the responsibility of the Contractor.
- If traffic will be impacted by construction, a traffic control plan must be submitted and approved by the City Traffic Engineer, Mike Armour at traffic@wichita.gov before construction can begin. The Contractor shall be responsible for all traffic control measures to facilitate construction. All construction zone markings and signage shall conform to the latest version of the Manual on Uniform Traffic Control Devices (MUTCD) as published by the US Dept. of Transportation, Federal Highway Administration. All costs associated with construction markings and signage shall be the Contractors responsibility.
- All elevations shown are NAVD 88.
- All areas disturbed during construction that will not be under proposed pavement shall be restored to match existing conditions.

- Any sidewalk, drive approach, curb, or street pavement removed to construct project must have a pavement cut permit and be replaced by the City contractor. Permits can be obtained by calling 316-268-4501 or 316-268-4480.
- All applicable fees (tap, equity, in lieu of & main benefit) must be paid before any work on this project can commence.
- City maintenance of water mains ends at right-of-way or easement line or within two feet of vault.
- Opening and closing of water valves shall be done slowly to prevent damage to the water distribution system from water hammer. All valves closed by the contractor must be reopened as new construction permits. The project inspector must ascertain that any valve closed by the Contractor is reopened. The contractor will be permitted to operate water valves only when the project inspector assigned to the project is present.
- The Contractor shall lay a Tracer Wire and Set Test Stations along all water pipe installed in accordance with City Specifications and Tracer Wire Detail on detail sheet WL-101, cost is subsidiary to pipe installation.
- The contractor shall provide materials for temporary blowoff of waterlines. Connections to the existing waterline(s) shall be made with clean, swabbed pipe and flushed upon completion of tie-ins.
- Requests for short term water interruptions shall be made to the City Water Distribution Division and will be subject to their approval. The Contractor shall give written notice to any property owner, business, and/or tenants that will have water service interrupted at least 5 days in advance. Such notifications should indicate the time and date that the water will be turned off and when the service will be restored. No business, property owner, and/or tenants shall be without water service for more than 8 hours. Proposed tie in locations which will affect water service to property owners shall be preformed during non-peak hours.
- The Contractor must schedule the connections to the existing main with the City such that there is a minimum disruption of service. Connections shall be made during periods of low water usage. The Contractor shall submit his proposed schedule for completing work for City approval at least 10 days prior to beginning construction.
- Deflections at pipe joint or couplings shall not exceed the pipe manufactures recommended maximum. Where deflections are greater than the maximum allowed, the contractor shall utilize fittings.
- Any existing joint exposed during excavation shall be replaced if within four feet of proposed joint.
- Valves 12 inch and larger are to be operated by the City Water Distribution Division, 48 hours of advance notice is required with the water Dispatch at 316-291-8921.
- All wet taps shall be installed by the City of Wichita. The Contractor will reimburse the City for tapping fees prior to tap being made. Unless noted on plans.
- The Contractor shall protect from damage and support existing utilities through construction as approved by the utility owner and the Engineer at the contractors expense.
- Contractor shall limit the extent of trench openings overnight and weekends to less than 50 feet.
- Fire Line inspections may be scheduled by calling 316-650-0740
- Maintain a minimum of 10-foot horizontal separation between all water lines (mains, services, and fire hydrants) and all sanitary sewer lines (mains, services, and manholes). All separation distances are to be measured from edge-to-edge at the closest point.
- Maintain a minimum of 2-foot vertical separation between all water lines (mains and services) and all gravity sanitary lines (mains, services, and manholes) at crossings. All separation distances are to be measured from edge-to-edge, at the closest point.
- Maintain a minimum of 2-foot vertical separation between all water lines (mains and services) and all pressurized sanitary sewer lines (force mains and services) at crossings. Waterlines must always be placed above pressurized sanitary sewer lines where they cross. All separation distances are to be measured edge-to-edge, at the closest point.

FIRE LINE to serve Wichita United Church of Christ 5200 E 31st Street South Washington Heights Fifth Addition: Lot 1, Block 2 CITY OF WICHITA, KANSAS

Gary Janzen, P.E. City Engineer
Project Number 2022-016420PPW
Org Code: 54030980

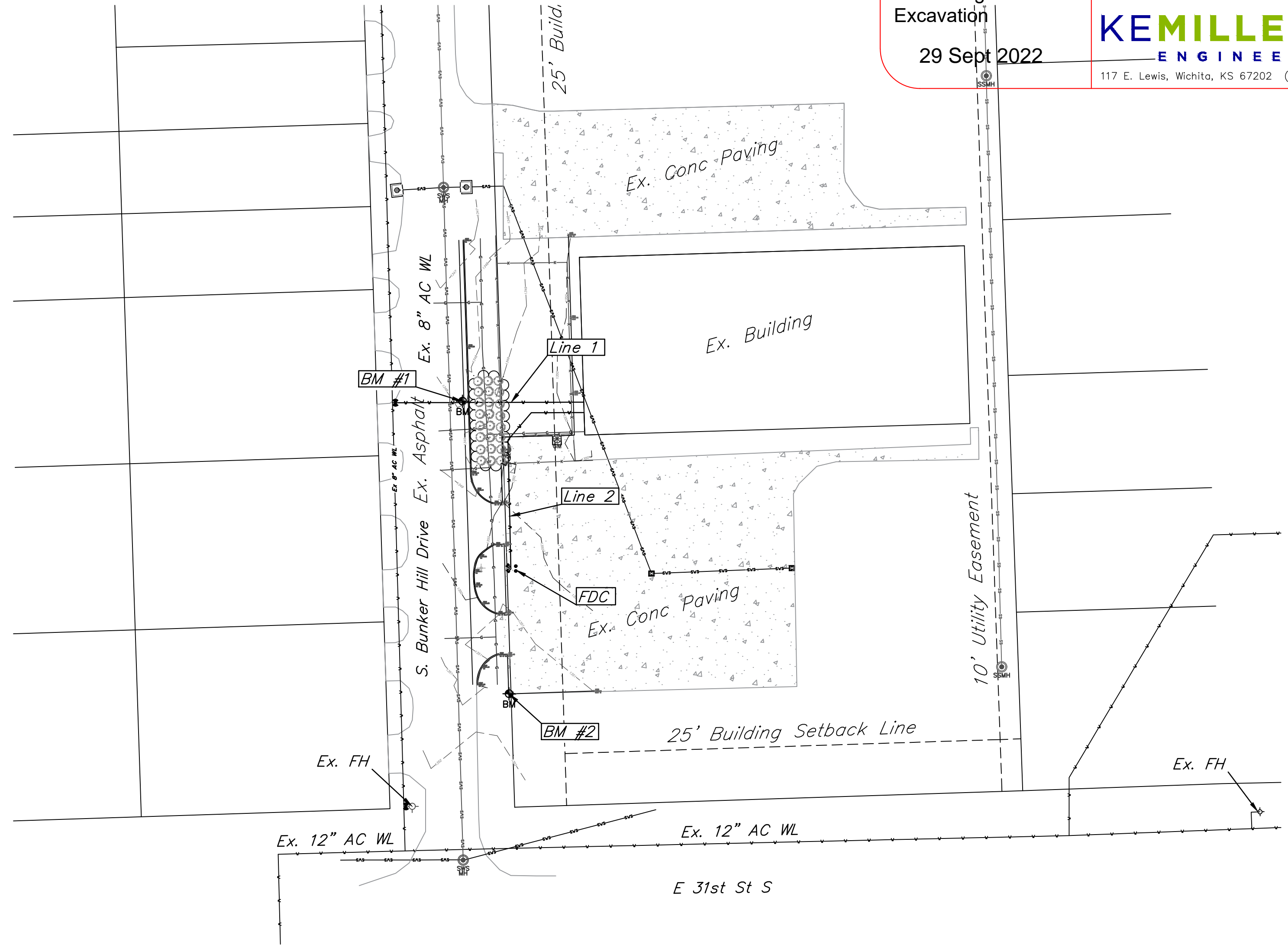
AS BUILTS	
Contractor: McCullough Excavation 29 Sept 2022	Project Inspector: Eric Miner KEMILLER ENGINEERING PA 117 E. Lewis, Wichita, KS 67202 (316)264-0242



Vicinity Map

Sheet Index

- 1.0 Title Sheet
- 2.1 Std Water Ass'y Detail
- 2.2 Misc. Water Detail
- 2.3 Remote FDC Detail
- 2.4 Standard Vault Detail
- 3.0 Plan and Profile LINE 1
- 3.1 Plan and Profile LINE 2
- 4.1-4.4 Erosion Control Details
- 5.0 Plat (For Reference Only)



Benchmarks

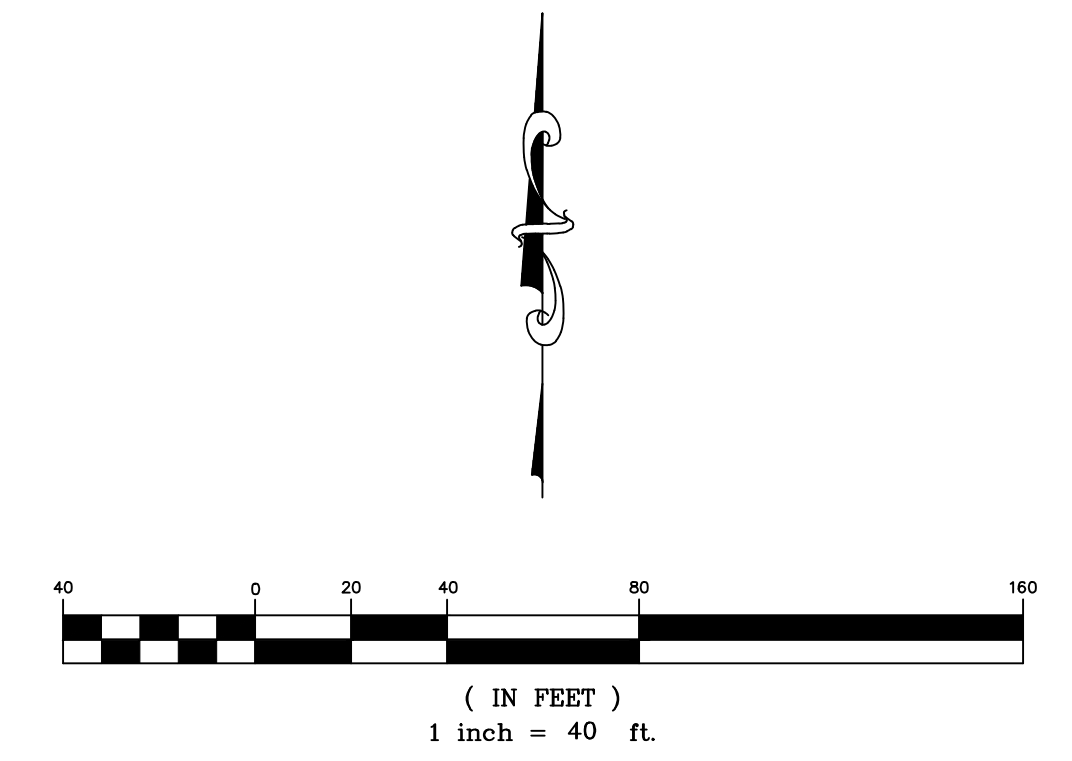
BM#1:
Magnal located approx. 16' to the North and approx. 59' to the West of the Southwest corner of Existing Building
Elev. = 1347.86 (NAVD 88)

BM#2:
Cross located approx. 0.2' away from the Southwest corner of the South-most Existing Concrete Pavement Section
Elev. = 1351.68 (NAVD 88)



THIS SHEET HAS BEEN SIGNED, SEALED AND DATED DIGITALLY

May, 2022



APPROVED AS NOTED
BY WICHITA PUBLIC WORKS
ENGINEERING DIVISION
& BY WICHITA FIRE DEPARTMENT

Engineering approved by Shawn Mellies on this day the 15th of June, 2022

Utilities approved by Greg Lolley on this day the 15th of June, 2022

Fire Dept. approved by Jose Ocaziz on this day the 15th of June, 2022

NOTE TO CONTRACTORS

Public Property:
Inspection and testing for the waterline is to be provided by a Licensed Consulting Engineering Firm under contract with the Owner/Developer. Said inspection is to be in accordance with the City of Wichita standard construction engineering practices and certified by a Professional Engineer Licensed in the state of Kansas. No work shall be performed in dedicated easements or public right-of-way by the Contractor without such inspection nor shall any work be commenced without written authorization by City Engineering. All Construction and Materials shall comply with the City of Wichita Specifications and Standards and Special Provision (on file and available in the City Engineer's Office) or on the City's Website.

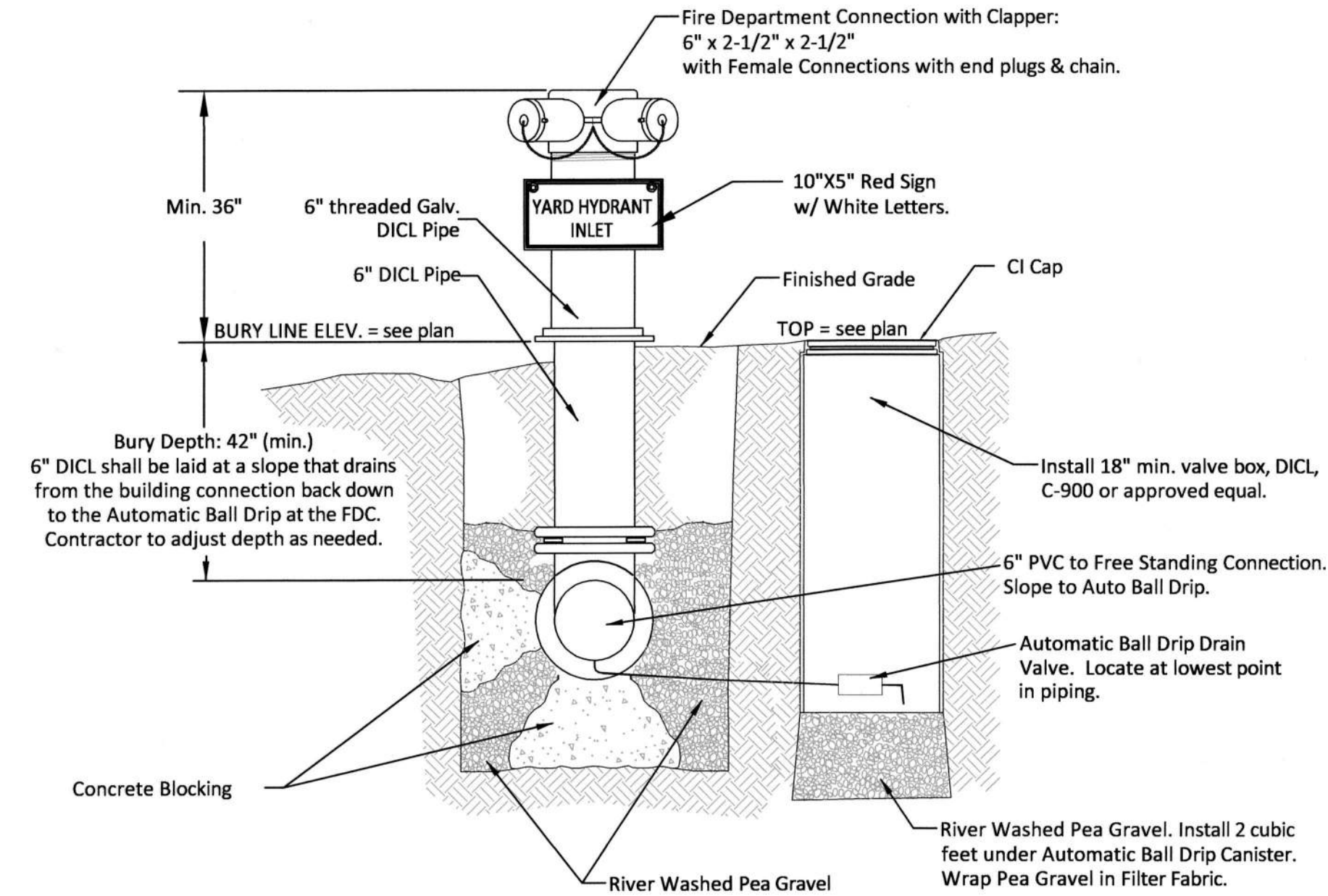
Private Property:
Installation and testing for the fire protection line is to be performed by a City of Wichita licensed fire protection contractor in accordance with the fire codes as adopted by the City of Wichita. All material and construction practices for the fire protection line shall comply with the fire codes as adopted by the City of Wichita (available from the City of Wichita Fire Department). The Contractor shall not commence work without notification and approval of the Wichita Fire Department. Inspection of the fire protection line is to be provided by a licensed Engineering Firm under contract with the Owner/Developer and the Fire Department. The contractor shall not start work until the project inspector is assigned to the project and present on the site. Any work done without inspection will be required to be uncovered for inspection.

An approved copy of these plans signed by City staff are required on-site.

KEMILLER
ENGINEERING PA
117 E. Lewis, Wichita, KS 67202 (316)264-0242

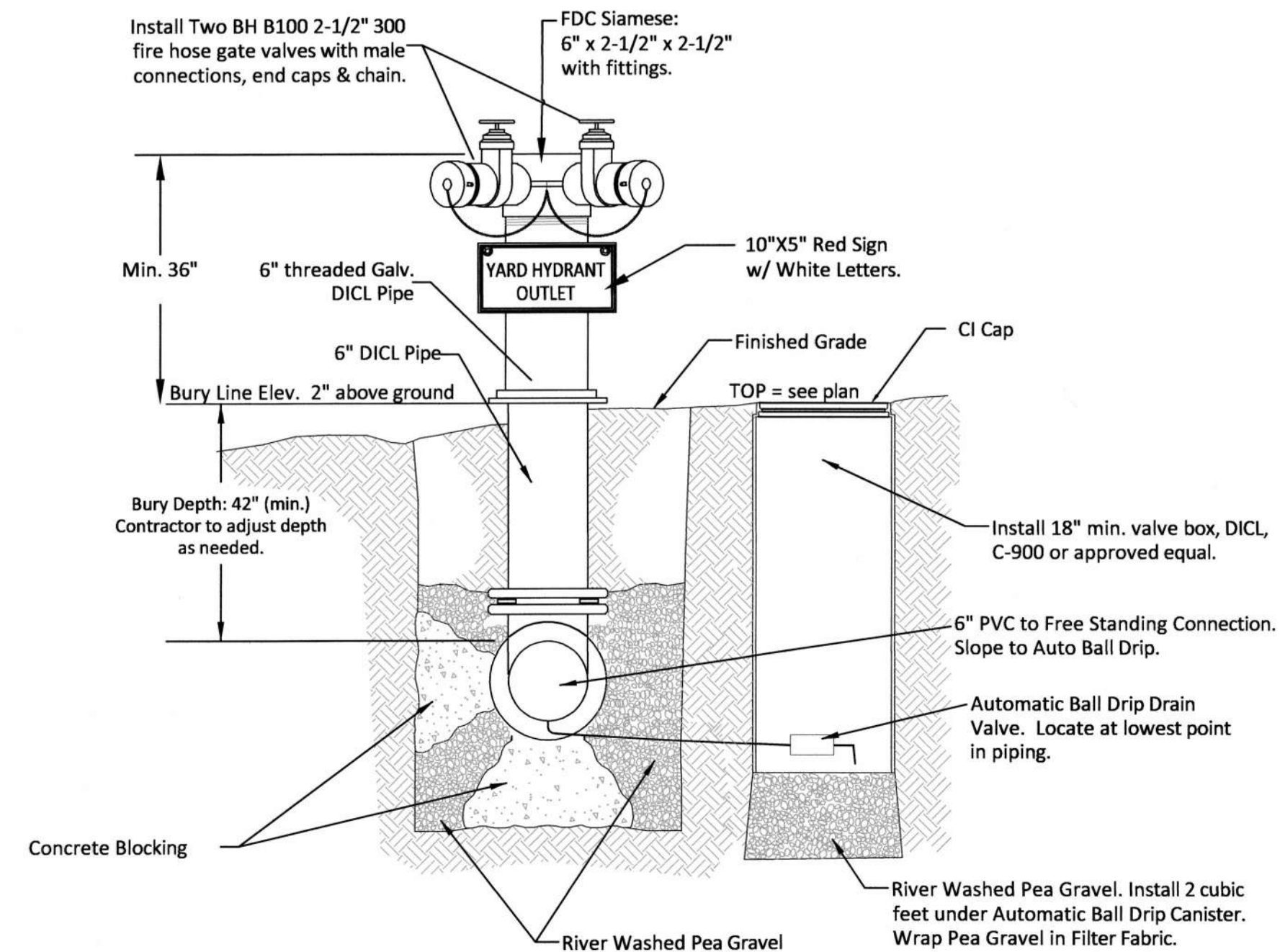
FREE STANDING YARD HYDRANT (also called Dry Fire Line)

Inlet and Outlet to be used together to provide fire hydrant coverage on the far side of a building.



1 FREE STANDING YARD HYDRANT INLET
NOT TO SCALE

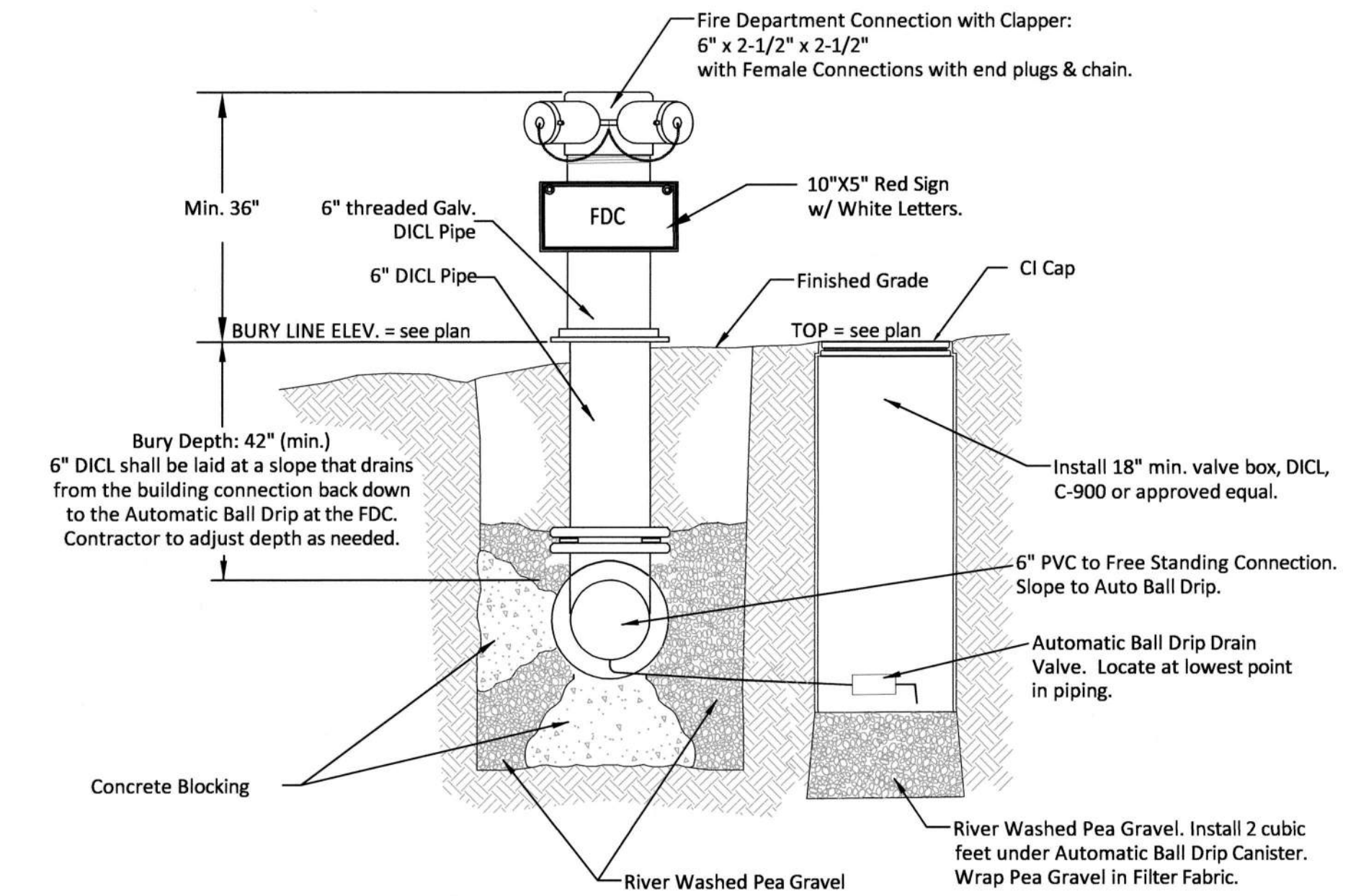
To be located within 150' of a Fire Hydrant



2 FREE STANDING YARD HYDRANT OUTLET
NOT TO SCALE

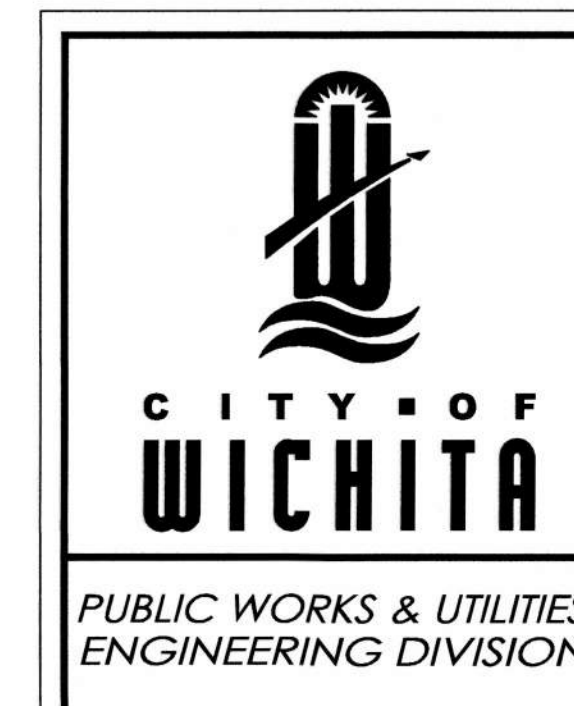
REMOTE FIRE DEPARTMENT CONNECTION

Same construction as Free Standing Yard Hydrant Inlet, with different sign. Used to boost interior sprinkler systems.



REMOTE FIRE DEPARTMENT CONNECTION
NOT TO SCALE

To be located within 150' of a Fire Hydrant



FREE STANDING YARD HYDRANT AND REMOTE FDC DETAIL

CITY ENGINEER		
GARY JANZEN, P.E.		
PROJECT NUMBER	OCA NUMBER	DATE
		SEPTEMBER 2019
CITY ENGINEER'S OFFICE		SHEET
CITY HALL - SEVENTH FLOOR 455 NORTH MAIN STREET WICHITA, KANSAS 67202-1620 (316) 268-4501		2.3

AS BUILTS

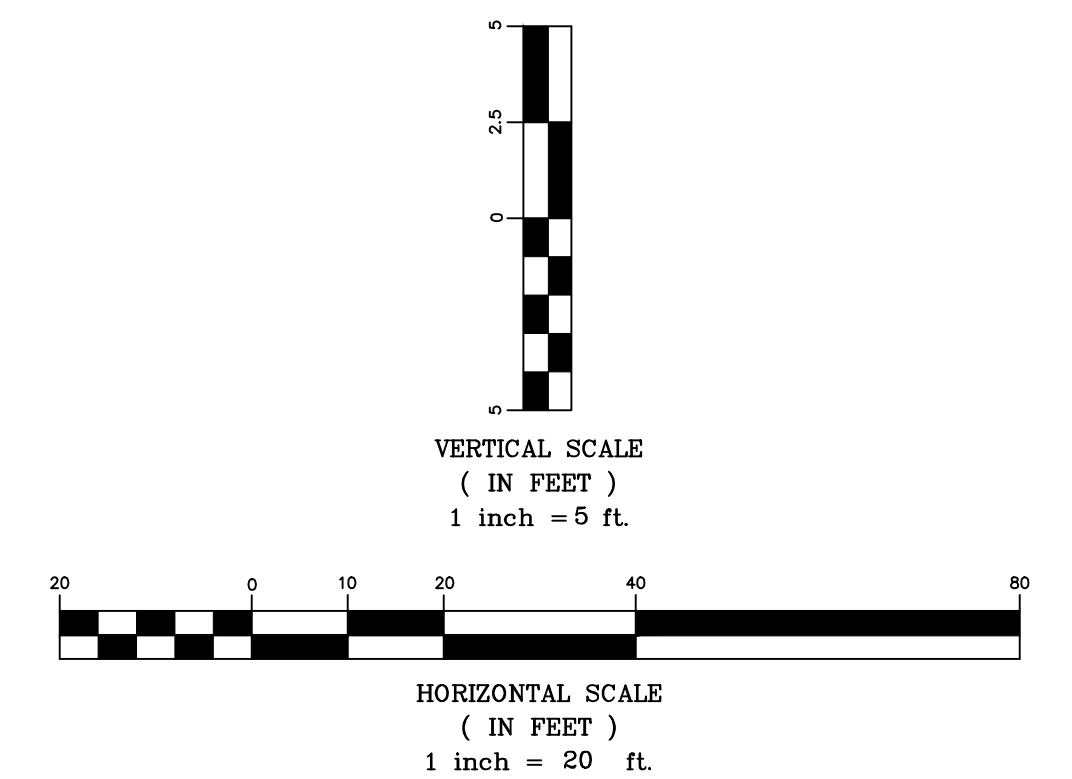


117 E. Lewis,
Wichita, KS 67202

(316)264-0242

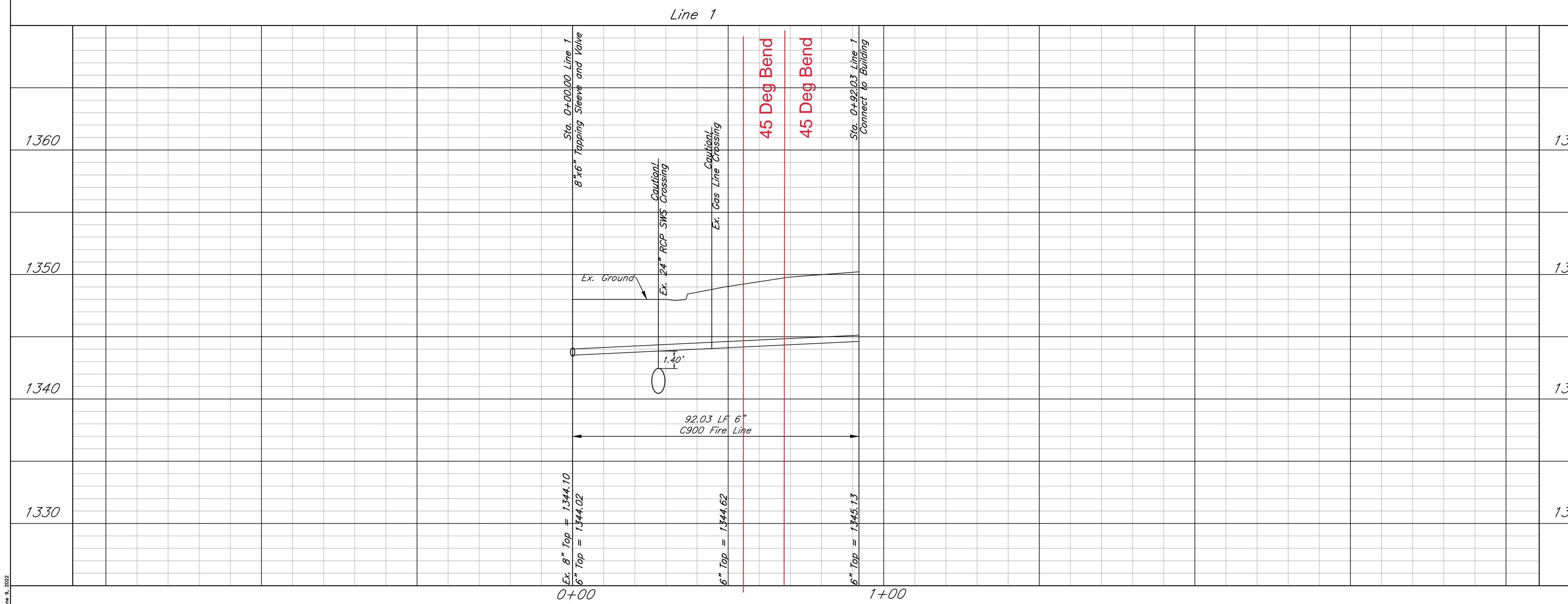
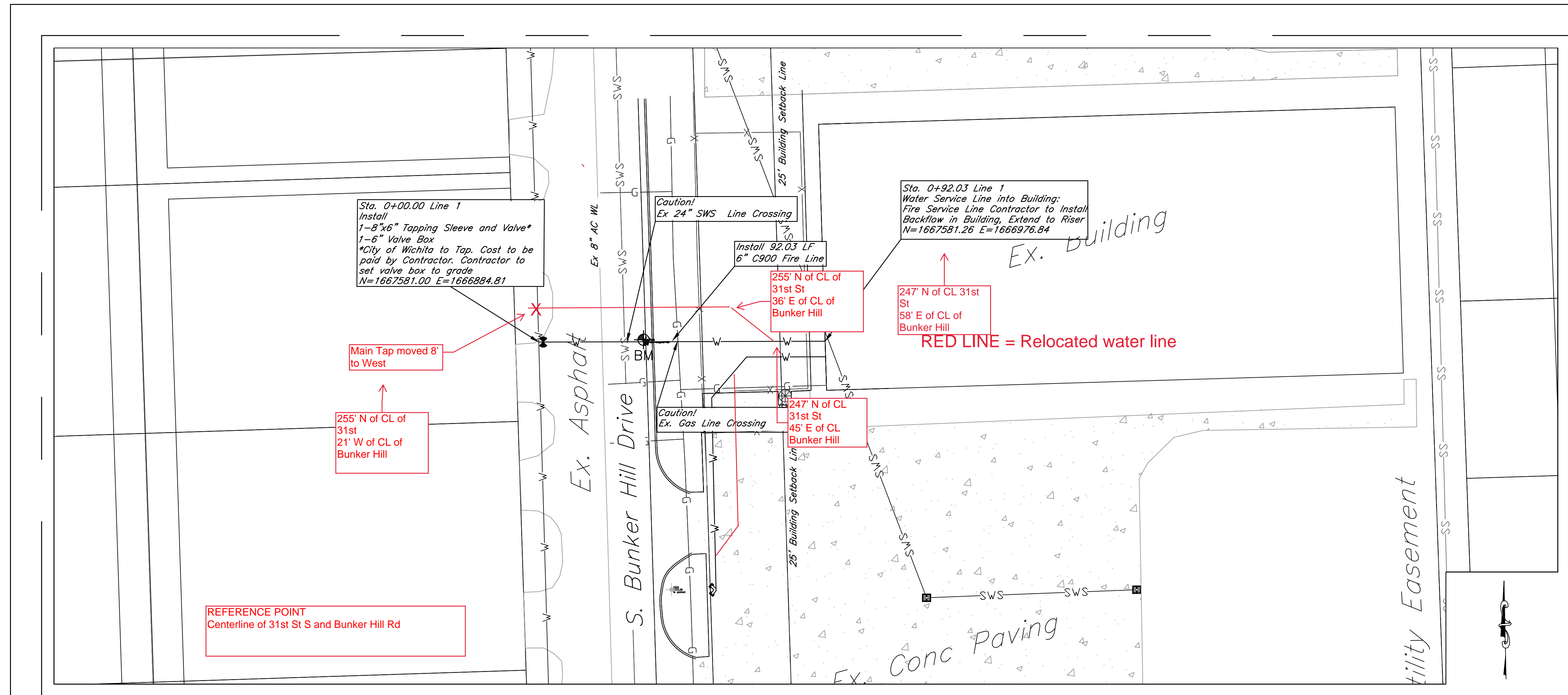


THIS SHEET HAS BEEN
SIGNED, SEALED AND
DATED DIGITALLY



Wichita United Church of Christ
Plan & Profile Line 1
Wichita, Kansas

	PROJECT NUMBER 2022-016420-PPW			SHEET 3.0
	KEM NO. 22037 DESIGN KM	FILE PG	DATE 05/2022 REVISED	

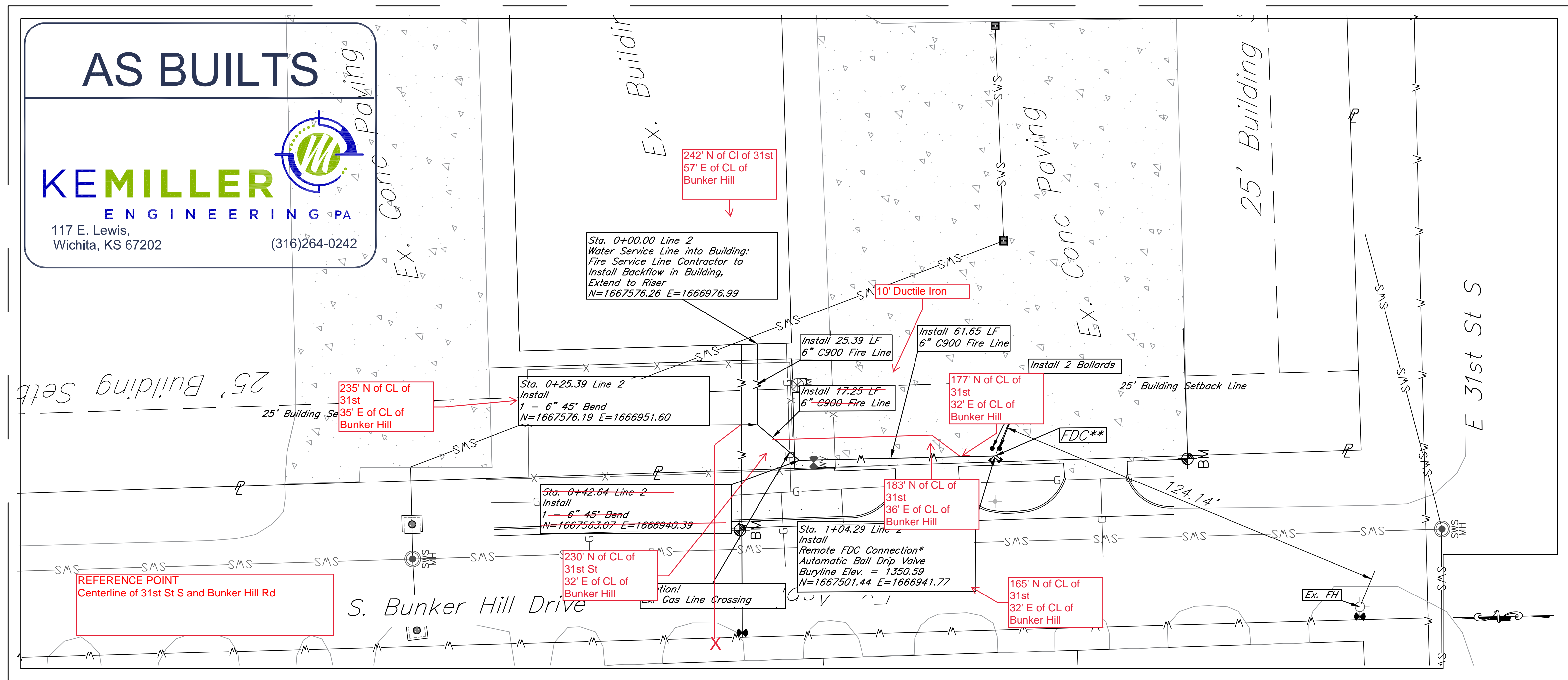


June 8, 2022

AS BUILTS

KEMILLER ENGINEERING PA

117 E. Lewis,
Wichita, KS 67202 (316)264-0242



Notes:

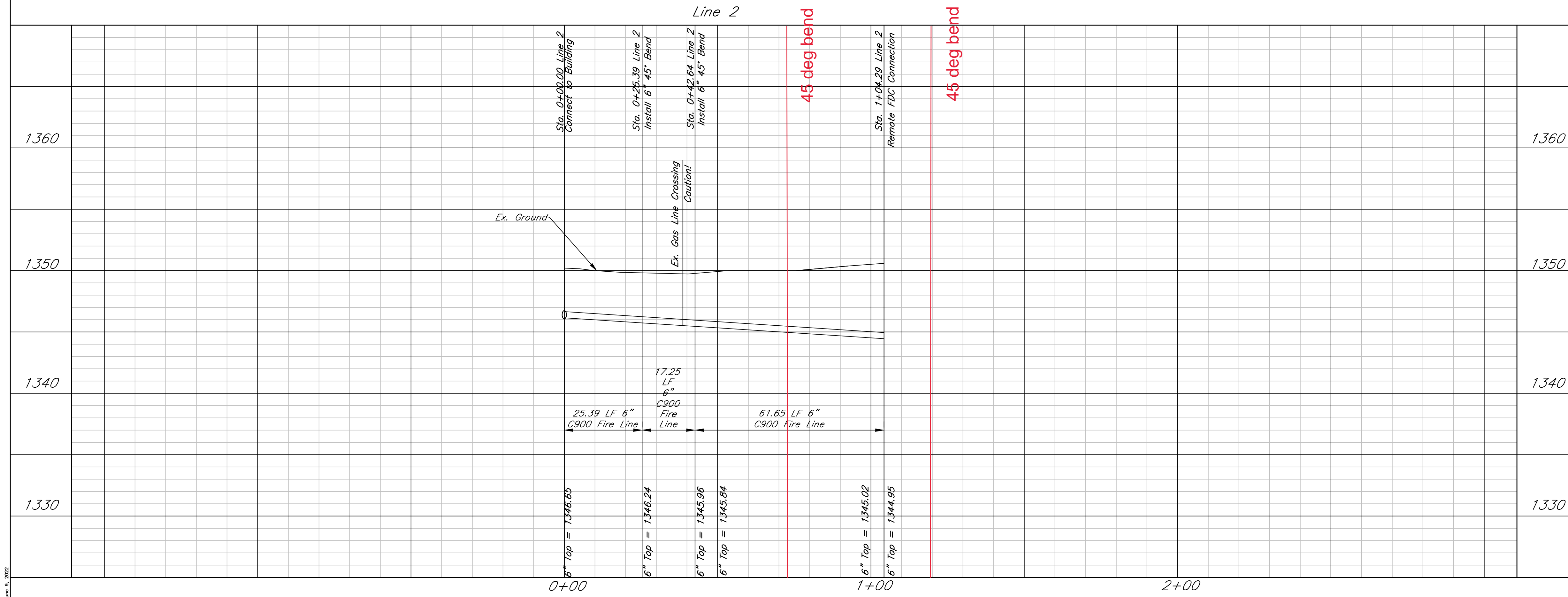
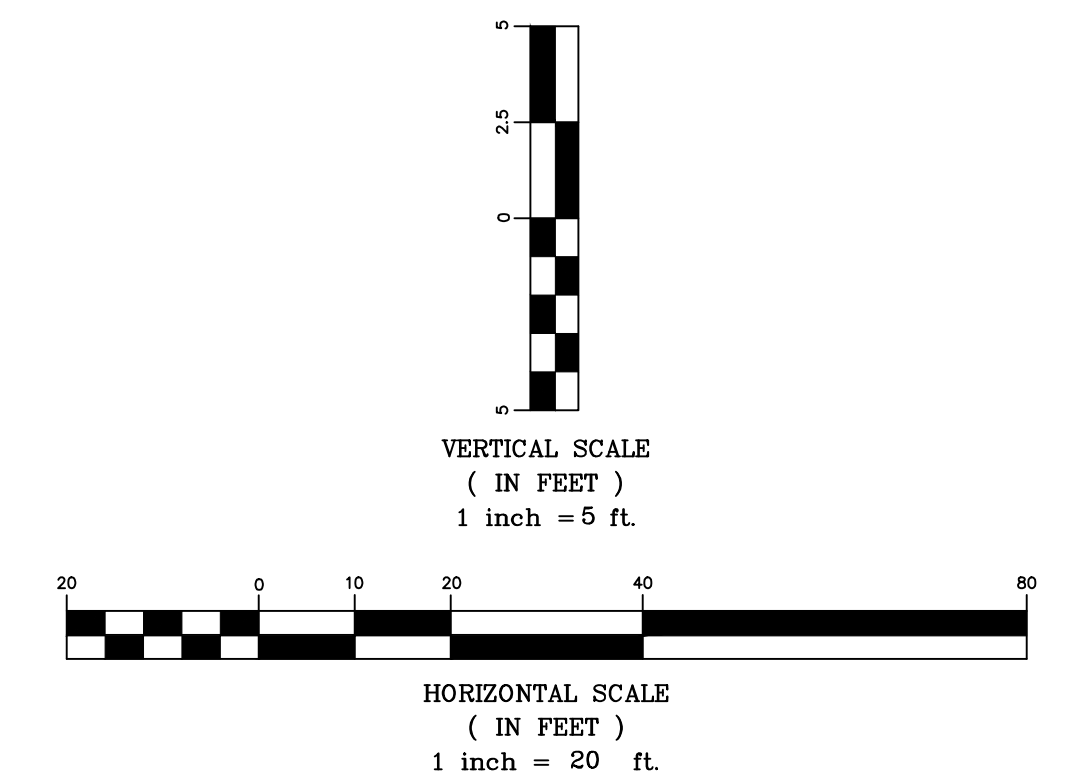
* Fire Department Connection with Clapper shall be a Siamese 4"x2.5"x2.5" with Female Connections with End Plugs & Chain as specified in NFPA 1963, Standard for Fire Hose Connections. 4-inch 30 degree STORZ connection is now allowed

**Remote FDC shall face Bunker Hill Drive with approved signage that states the address of the occupancy it protects and shall be kept clear of any plantings. The sign shall be red with white lettering. Calculated friction loss values associated with the remote FDC line shall be stated on the FDC sign.

RED LINE = Relocated Water Line



THIS SHEET HAS BEEN SIGNED, SEALED AND DATED DIGITALLY



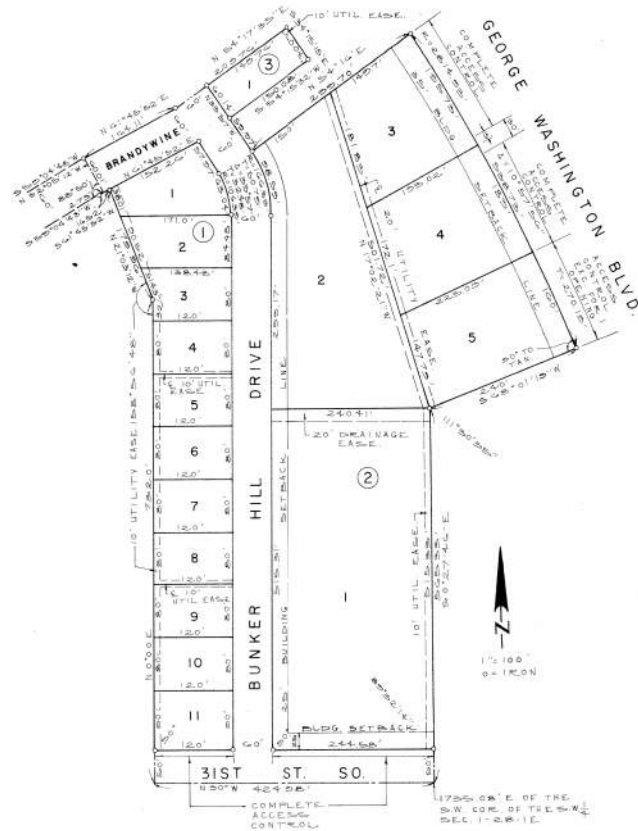
Wichita United Church of Christ
Plan & Profile Line 2
Wichita, Kansas

PROJECT NUMBER
2022-016420 PPW

KEMILLER ENGINEERING PA 117 E. Lewis, Wichita, KS 67202 (316)264-0242	KEM NO. 220037	FILE	DATE 05/2022	SHEET 3.1
	DESIGN KM	DRAWN PG	REVISED	

June 8, 2022

WASHINGTON HEIGHTS FIFTH ADDITION
WICHITA, SEDGWICK COUNTY, KANSAS



State of Kansas, County of Sedgwick, SS.

I, Kenneth O. Taylor, Civil Engineer in said State and County, do hereby certify that I have surveyed and platted "WASHINGTON HEIGHTS FIFTH ADDITION", Wichita, Sedgwick County, Kansas, and that the accompanying plat is a true and correct exhibit of said survey described as follows: A tract in the S 1/2 of the SW 1/4 of Section 1, T28S, R1E of the 6th P.M., Sedgwick County, Kansas, described as follows: Beginning at a point on the south line of said SW 1/4, 1310.1 feet east of the SW corner of said SW 1/4, said point being the SE corner of Washington Heights Fourth Addition, Wichita, Sedgwick County, Kansas; thence S0°00'00"E along the east line of said Washington Heights Fourth Addition, 732.0 feet; thence S21°05'12"W, along the easterly line of said Addition, 179.96 feet; thence S61°45'52"W, 16.52 feet; thence N55°04'48"E, 2.73 feet; thence N32°05'12"W, 60.01 feet; thence N61°45'52"E, 164.11 feet; thence N54°17'35"E, 209.76 feet; thence S34°15'15"E, 60.04 feet; thence S54°15'32"W, 150.08 feet; thence S31°37'E, 59.97 feet; thence N54°16'5", 299.70 feet to the westerly right of way of George Washington Boulevard; thence southeasterly along said westerly right of way of said George Washington Boulevard, 536.73 feet to the NE corner of Washington Heights Third Addition, Wichita, Sedgwick County, Kansas; thence S68°01'19"W along the northerly line of said Washington Heights Third Addition, 240 feet to the SW corner of said Addition; thence S02°27'46"E along the westerly line of said Addition, 565.33 feet to the south line of said SW 1/4; thence N90°00'00"W, 424.98 feet to the point of beginning.

The above described property includes a REPLAT of part of Lot 1, Block 2 in Washington Heights Fourth Addition, Wichita, Sedgwick County, Kansas and Brandywine (Street) as platted in said Addition.

Part of Lot 1, Block 2 in Washington Heights Fourth Addition, Wichita, Sedgwick County, Kansas and Brandywine as platted in said Addition being vacated and replatted by virtue of K.S.A. 1970 Supp. 12-512(b).

Kenneth O. Taylor, Civil Engineer
Kenneth O. Taylor

Know all men by these presents that Wayne Williams, Inc. by Errol Wayne Williams, President, has caused the land described in the Civil Engineer's certificate to be platted into lots, blocks and streets to be known as "WASHINGTON HEIGHTS FIFTH ADDITION", Wichita, Sedgwick County, Kansas. Utility easements as indicated on the plat are hereby granted for the construction and maintenance of all public utilities. The streets are hereby dedicated to and for the use of the public.

All abutter's rights of access to or from 31st Street South, over and across the south line of Lot 11, Block 1 and Lot 1, Block 2, are hereby granted to the City of Wichita.

All abutter's rights of access to or from George Washington Boulevard, over and across the easterly line of Lot 3, Block 2, except the southerly 15 feet of said easterly line, Lot 4, Block 2, except the northerly 15 feet of said easterly line and Lot 5, Block 2, are hereby granted to the City of Wichita, provided, however that Lot 5, Block 2 shall have access to George Washington Boulevard at one location to be designated by the City Engineer of the City of Wichita, Kansas.

Wayne Williams, Inc.
Errol Wayne Williams, President
Errol Wayne Williams
Roseana Williams, Secretary
Roseana Williams

State of Kansas, County of Sedgwick, SS.

The foregoing instrument was acknowledged before me this 23rd day of February, 1975, by Errol Wayne Williams, President of Wayne Williams, Inc., a Kansas corporation, on behalf of the corporation.

Joyce E. Detweiler, Notary Public
JOYCE E. DETWEILER
SEDGWICK COUNTY, KANSAS
MY COMM. EXP. NOV. 11, 1978
Know all men by these presents that Air Capitol Savings, by *Bill Suter*, President, does hereby consent to the platting of "WASHINGTON HEIGHTS FIFTH ADDITION", Wichita, Sedgwick County, Kansas.

ATTEST: *Bill Suter*, President
Air Capitol Savings
Gene Johnson, Sec'y.
Gene Johnson

State of Kansas, County of Sedgwick, SS.
The foregoing instrument was acknowledged before me this 22nd day of February, 1975, by *Bill Suter*, President of Air Capitol Savings, a Kansas corporation, on behalf of the corporation.

Joyce E. Detweiler, Notary Public
JOYCE E. DETWEILER
SEDGWICK COUNTY, KANSAS
MY COMM. EXP. NOV. 11, 1978
This plat of "WASHINGTON HEIGHTS FIFTH ADDITION", Wichita, Sedgwick County, Kansas, has been submitted to and approved by the Wichita-Sedgwick County Metropolitan Area Planning Commission, Wichita, Kansas.

Dated this 13th day of FEBRUARY, 1975.
Wichita-Sedgwick County Metropolitan Area Planning Commission
By *Harlan R. Kamen*, Chairman
Harlan R. Kamen
Robert A. Lakin, Secretary
Robert A. Lakin

This plat approved and all dedications shown hereon accepted by the Board of City Commissioners of the City of Wichita, Kansas, this 15th day of FEBRUARY, 1975.
Connie A. Peters, Mayor
CONNIE A. PETERS
Donald C. Gsick, City Clerk
DONALD C. GSICK

This plat approved and all dedications shown hereon accepted by the Board of County Commissioners of Sedgwick County, Kansas, this 12th day of April, 1975.

Earl E. Rush, Chairman
Earl E. Rush
Tom Scott, Commissioner
Tom Scott
John Hale, Commissioner
John Hale

ATTEST: *George Pierce*, County Clerk
George Pierce

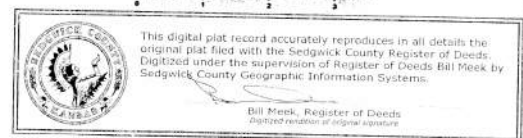
Entered on transfer record this 14th day of April, 1975.
#2 28396 *George Pierce*, County Clerk
George Pierce

State of Kansas, County of Sedgwick, SS.
This is to certify that this instrument was filed for record in the Register of Deeds Office, at 11:38 o'clock a.m., on the 18th day of April, 1975.

Bette F. McCart, Register of Deeds
Bette F. McCart
Pearl B. Gilbert, Deputy
Pearl B. Gilbert



Rest. COV F138 P1112
6-2 6-20



6-20
6-20

6-2
6-20