

EROSION CONTROL LEGEND

- VTC VEHICLE TRACKING CONTROL
- PROPOSED LANDSCAPE AREA
- IP INLET PROTECTION
- PT PORTABLE TOILET
- CWA CONCRETE WASHOUT AREA
- SF SILT FENCE
- LOC LIMITS OF CONSTRUCTION
- SW STREET SWEEPING

ANTICIPATED CONSTRUCTION SEQUENCE	RESPONSIBLE CONTRACTOR			
	GRADING	UNDERGROUND	PAVING&CONCRETE	LANDSCAPE
1. INSTALL SEDIMENT CONTROL DEVICES	X	X	X	X
STABILIZED CONSTRUCTION ENTRANCE	X	X		
SILT FENCE	X			
2. GRADE SITE / STOCK PILE TOPSOIL	X			
SILT FENCE (TOPSOIL STOCKPILES & OPEN SPACE SLOPES)	X			
3. INSTALL STORM WATER MANAGEMENT	X	X	X	X
STORM SEWER EXPLORATORY DIG		X		
INLET PROTECTION		X		
4. TEMPORARY VEGETATIVE STABILIZATION				
TEMPORARY SEEDING				X
MULCHING				X
5. SITE WORK - CONCRETE WASHOUT AREA			X	
CURB & GUTTER & PATCHING			X	
AGGREGATE SUBBASE			X	
BAM & BINDER			X	
SIDEWALKS AND CONCRETE PAVEMENT			X	
ASPHALT PATCHES			X	
LANDSCAPE INSTALLATION				X
6. TEMPORARY SEEDING ON ALL AREAS TO BE EXPOSED LONGER THAN 60 DAYS				X
7. SURFACE PARKING LOTS			X	
8. PERMANENT VEGETATIVE STABILIZATION OF EXPOSED AREAS				X
PERMANENT SEEDING				X
SODDING				X
9. PERFORM CONTINUING MAINTENANCE	X	X	X	X

SOIL EROSION AND SEDIMENT CONTROL NOTES:

- INLET PROTECTION SHALL BE INSTALLED AT EACH DRAINAGE STRUCTURE THAT ACCEPTS WATER ONCE THAT STRUCTURE IS ABLE TO RECEIVE WATER.
- ALL ROADS INCLUDING ADJACENT ROADWAYS, SWALES, DRAINAGE STRUCTURES, MANHOLES AND PIPES MUST BE KEPT CLEAN AND FREE OF DIRT, SILT AND DEBRIS AT ALL TIMES.
- THE CONTRACTOR SHALL BE RESPONSIBLE FOR FIELD ADJUSTING THE LOCATION OF THE SILT FENCE TO ACCOMMODATE CONSTRUCTION ACTIVITIES. RELOCATED SILT FENCE SHALL BE PLACED TO PREVENT SILT FROM RUNNING OFF THE SITE. SILT FENCE SHALL BE RELOCATED BACK TO ORIGINAL LOCATION AS NECESSARY AFTER CONSTRUCTION ACTIVITY IN THE EFFECTED AREA IS COMPLETED.
- AFTER PERMANENT GROUND COVER IS ESTABLISHED THROUGHOUT THE SITE, THE SEDIMENT SHALL BE REMOVED FROM THE UNDERGROUND DETENTION SYSTEM AND ALL STORM SEWER PIPES AND STRUCTURES.
- SEDIMENT CONTROLS TO BE IMPLEMENTED PRIOR TO GRADING AND WITHIN 7 DAYS OF GRUBBING.
- FOR DISTURBED AREAS OVER 50 FEET AWAY FROM A STREAM REMAINING DORMANT FOR OVER 14 DAYS, TEMPORARY EROSION CONTROLS SHOULD BE APPLIED WITHIN 7 DAYS. AREAS THAT WILL BE LEFT IDLE OVER WINTER SHOULD HAVE TEMPORARY EROSION CONTROLS INSTALLED PRIOR TO THE ONSET OF WINTER WEATHER.
- TIMELINE FOR BMPs TO BE REPAIRED, MAINTAINED OR INSTALLED:
 - WITHIN 3 DAYS OF INSPECTION FOR NON-SEDIMENT POND BMPs
 - WITHIN 10 DAYS OF INSPECTION FOR SEDIMENT PONDS TO BE REPAIRED OR CLEANED OUT AND REPLACING A BMP NOT MEETING THE INTENDED FUNCTION OR MISSING FROM THE SITE.

INSPECTION SCHEDULE:

- QUALIFIED INSPECTION PERSONNEL WILL PERFORM INSPECTIONS.
- SITE INSPECTIONS TO BE PERFORMED ONCE EVERY 7 CALENDAR DAYS; AND AFTER EVERY RAIN EVENT GREATER THAN OR EQUAL TO 0.5 INCH IN A 24 HOUR PERIOD BY THE END OF THE NEXT CALENDAR DAY (EXCLUDING NON-WORKING WEEKENDS & HOLIDAYS).
 - EROSION CONTROL DEVICES & SWALES SHALL BE MONITORED DAILY.
 - FOREBAY/SEDIMENT TRAPS SHALL BE MONITORED WEEKLY. TRAPPED SEDIMENT SHALL BE REMOVED, RESPREAD, & STABILIZED.
 - VEGETATIVE PLANTINGS (SEEDING, SODDING, ETC.) SHALL BE CHECKED PERIODICALLY TO VERIFY THAT ADEQUATE GROUND COVER IS BEING ESTABLISHED. AREAS OF INSUFFICIENT COVER SHALL BE RESEEDED.
 - REPAIRS TO EROSION CONTROL DEVICES SHALL BE MADE UPON DISCOVERY.



PANDA EXPRESS, INC.
1683 Walnut Grove Ave.
Rosemead, California
91770
Telephone: 626.799.9898
Facsimile: 626.372.8288

All ideas, designs, arrangement and plans indicated or represented by this drawing are the property of Panda Express Inc. and were created for use on this specific project. None of these ideas, designs, arrangements or plans may be used by or disclosed to any person, firm, or corporation without the written permission of Panda Express Inc.

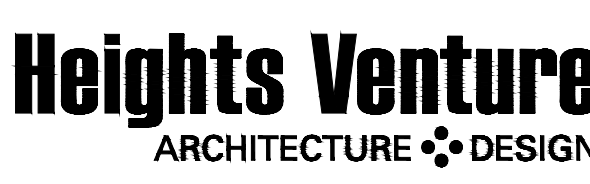
REVISIONS:

△	CITY COM. RESPONSES #1	08-19-22
△	CITY COM. RESPONSES #2	09-07-22
	WATER MAIN REALIGNMENT	03-24-23

ISSUE DATE:

DRAWN BY: rtm

PANDA PROJECT #: S8-22-D20060
PANDA STORE #: D20060
ARCH PROJECT #: 21167.000



HOUSTON 1111 North Loop West, Suite 800 Houston, Texas 77008 713 869 1103 V
DALLAS 5717 Legacy Drive, Suite 240 Plano, Texas 75024 972 490 7292 V

PANDA EXPRESS

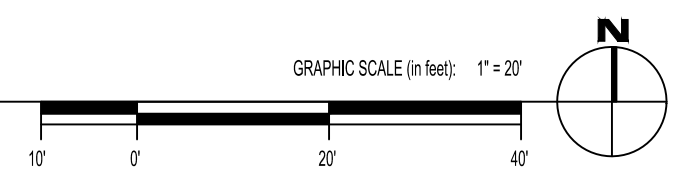
GREENWICH COURT
WICHITA, KS 67226

EROSION CONTROL PLAN

C01.5

GREENWICH COURT

EROSION CONTROL PLAN



SIGNED: 10-03-22

PERMIT SET



PANDA EXPRESS, INC.
1683 Walnut Grove Ave.
Rosemead, California
91770
Telephone: 626.799.9898
Facsimile: 626.372.8288

All ideas, designs, arrangement and plans indicated or represented by this drawing are the property of Panda Express Inc. and were created for use on this specific project. None of these ideas, designs, arrangements or plans may be used by or disclosed to any person, firm, or corporation without the written permission of Panda Express Inc.

REVISIONS:

CITY COM. RESPONSES #1	08-19-22
CITY COM. RESPONSES #2	09-07-22
WATER MAIN REALIGNMENT	03-24-23

ISSUE DATE:

DRAWN BY: rtm

PANDA PROJECT #: S8-22-D20060

PANDA STORE #: D20060

ARCH PROJECT #: 21167.000



rtm
engineering consultants
9225 Indian Creek Pkwy
Suite 2075
Overland Park, KS 66210
Telephone: (913) 322-1400
www.rtmec.com
KS Certificate of Authority: E-2641

Heights Venture
ARCHITECTURE DESIGN

HOUSTON 1111 North Loop West, Suite 800
HOUSTON, TEXAS 77008
713 869 1103 V
DALLAS 5717 Legacy Drive, Suite 240
Plano, Texas 75024
972 490 7292 V

PANDA EXPRESS

GREENWICH COURT
WICHITA, KS 67226

PPW- 2282
REALIGNMENT
PLAN
C01.9

GREENWICH COURT

PERMIT SET

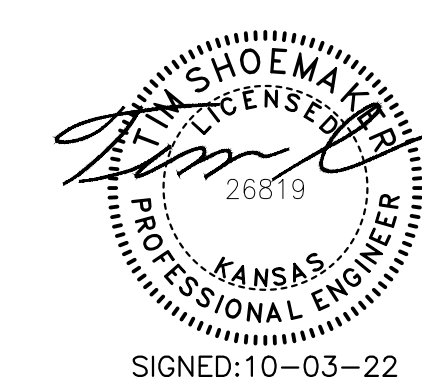
LEGEND:

	EXISTING	PROPOSED
SANITARY SEWER		
SANITARY SERVICE		
STORM SEWER		
STORM SERVICE		
WATERMAIN		
GAS MAIN		
TELEPHONE LINE		
ELECTRIC LINE		
OVERHEAD WIRES		
CATCH BASIN/INLET		
STORM MANHOLE		
SANITARY MANHOLE		
VALVE BOX/VAULT		
FIRE HYDRANT		
B-BOX		
LIGHTS (SEE BLDG PLANS)		
UTILITY BOX (ELEC, TELE)		
ELECTRIC METER		

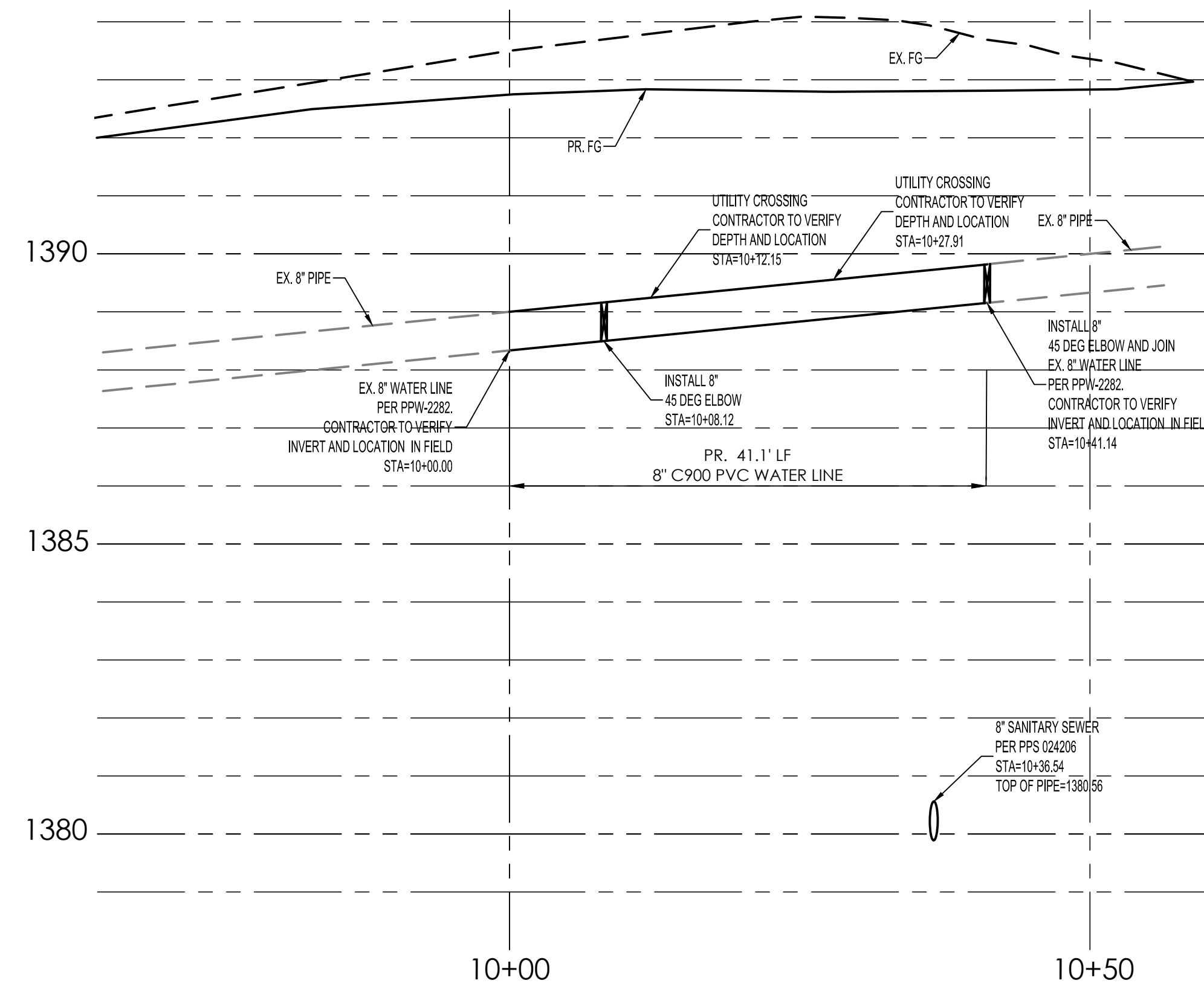
STANDARD DETAILS		
JURISDICTION	DETAIL NO.	DETAIL DESCRIPTION
CITY OF WICHITA PUBLIC WORKS AND UTILITIES ENGINEERING DIVISION	WL-101	FIRE HYDRANT ASSEMBLY
CITY OF WICHITA PUBLIC WORKS AND UTILITIES ENGINEERING DIVISION	WL-104	45°/90° ELBOW & CAP
CITY OF WICHITA PUBLIC WORKS AND UTILITIES ENGINEERING DIVISION	SW-501	EROSION CONTROL- CURB INLET PROTECTION CONSTRUCTION ENTRANCE
CITY OF WICHITA PUBLIC WORKS AND UTILITIES ENGINEERING DIVISION	SW-502	EROSION CONTROL- BARRIER DETAILS
CITY OF WICHITA PUBLIC WORKS AND UTILITIES ENGINEERING DIVISION	SW-503	EROSION CONTROL- BARRIER DETAILS

NOTES:

- EX. ITEMS SHALL BE FIELD VERIFIED. RELOCATION OR ADJUSTMENT MAY BE NEEDED. CONTRACTOR TO VERIFY.
- CONTRACTOR SHALL VERIFY ALL WORK, INCLUDING BUT LIMITED TO, SIZES, MATERIALS AND LOCATION, WITH UTILITY COMPANIES PRIOR TO INSTALLATION.
- VERIFY SERVICE LOCATIONS WITH BUILDING PLANS PRIOR TO CONSTRUCTION AND NOTIFY ENGINEER OF ANY DISCREPANCIES.
- REFERENCE PART 800 OF CITY OF WICHITA SPECIFICATIONS FOR ALL SANITARY AND WATER PIPE SPECIFICATIONS.
- ALL UTILITY TIE DIMENSIONS ARE FROM CENTER OF UTILITY AND TO BACK OF CURB WHEN TIED TO CURB LINES, UNLESS OTHERWISE NOTED.
- CONTRACTOR TO INSPECT EXISTING SEWER AT POINT OF CONNECTION. CONTRACTOR TO VERIFY THAT EXISTING PIPE IS IN GOOD WORKING CONDITION. CONTRACTOR TO REPAIR AS REQUIRED.
- CONTRACTOR TO NOTIFY OWNER/ENGINEER IF CONFLICTS OCCUR.
- NEW OPENING/CONNECTIONS TO EXISTING MANHOLE/STRUCTURES SHALL BE CORE-DRILLED.
- TEST PITS MUST BE EXCAVATED IN ADVANCE OF CONSTRUCTION IN ORDER TO CONFIRM DEPTH AND LOCATION OF EXISTING UTILITIES. NO ADDITIONAL PAYMENT WILL BE MADE FOR TEST PIT EXCAVATION.
- ALL UTILITY CONSTRUCTION SHALL BE IN ACCORDANCE WITH THE CITY OF WICHITA PUBLIC UTILITIES AND CROSS CONNECTION CONTROL REGULATIONS AND STANDARDS.
- THE CONTRACTOR SHALL OBTAIN AND PAY FOR ALL INSPECTIONS, CERTIFICATIONS, EQUIPMENT ETC., THAT MAY BE REQUIRED.
- CONTRACTOR SHALL COORDINATE GAS, ELECTRIC AND TELEPHONE CONDUIT, PIPING, AND CONDUCTOR REQUIREMENTS WITH MEP PLANS AND UTILITY PROVIDER PRIOR TO INSTALLATION.
- CONTRACTOR TO COORDINATE TESTING, FLUSHING AND DISINFECTION OF THE PROPOSED WATER LINE WITH CITY'S THIRD PARTY INSPECTOR.
- CONTRACTOR TO USE APPROVED TAPPING METHOD TO JOIN EXISTING WATER LINE. IF A SCHEDULED SHUTDOWN IS REQUIRED, CONTRACTOR TO ADVISE AND COORDINATE WITH ADJACENT PROPERTY OWNER.

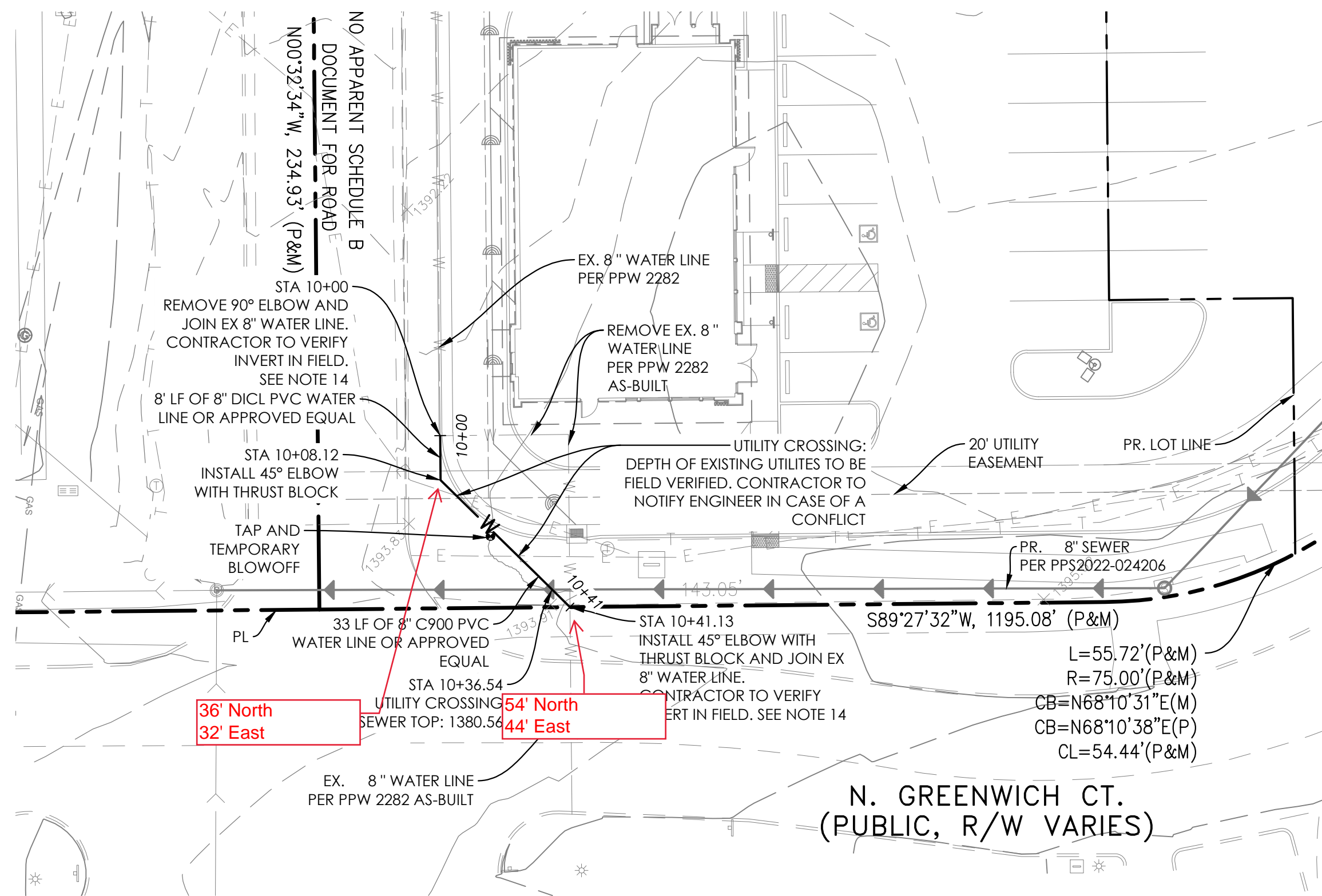


SIGNED: 10-03-22



WATER MAIN REALIGNMENT
PROFILE

GRAPHIC SCALE (in feet):
HORIZONTAL: 1" = 10'
VERTICAL: 1" = 2'



WATER MAIN REALIGNMENT
PLAN

GRAPHIC SCALE (in feet): 1" = 20'

