

BENCHMARKS:
 BM #1: Square cut on top of curb, approx. 10.3' west and 28.1' north of the northeast corner of Lot 5, Block 1, Kiser West 2nd Addition, Wichita, Sedgwick County, Kansas Elevation = 1304.75 (NAVD 88)

BM #2: Square cut on top of curb, approx. 26.3' west and 1,167.9' south of the northeast corner of Lot 5, Block 1, Kiser West 2nd Addition, Wichita, Sedgwick County, Kansas Elevation = 1304.75 (NAVD 88)

Saw cut, remove and replace existing concrete sidewalk as necessary for water line construction.

WL Sta. 0+00.00, Line 1
 1 - 16"x8" Tapping Saddle
 1 - 8" Tapping Valve
 & Valve Box
 Tapping saddle, tapping valve & valve box to be furnished and installed by the City of Wichita Water Dept. Contractor to set valve box to grade. Contractor to reimburse City of Wichita for water tap. Valve Box Elev. = 1391.60
 N: 1,693,326.06
 E: 1,686,160.80

Valve: 47' E of C/L Greenwich;
 80' N of C/L Entrance to Center

45° (DN): 45' E of C/L Greenwich;
 80' N of C/L Entrance to Center

45° (UP): 47' E of C/L Greenwich;
 80' N of C/L Entrance to Center

City maintenance of water mains ends at right-of-way.

All water services 2" or smaller will be installed by the City of Wichita to the Wichita detail. Contact Kent Dodds at 316-219-8921.

13.00 L.F. 8" Pipe
 WL Sta. 0+13.00, Line 1
 Begin installation of RJPVC pipe under road by directional drilling with RJ connection.
 N: 1,693,325.82
 E: 1,686,147.80

WL Sta. 1+49.62, Line 1
 1 - Fire Hydrant Assy. L = 9'
 5.00 L.F. 8" Pipe (S)
 1 - 8" CIMJ Cap (S)
 Bury Line Elev. = 1390.10
 Valve Box Elev. = 1390.60
 N: 1,693,289.18
 E: 1,686,046.57

Tee: 62' W of C/L Greenwich;
 35' N of C/L Entrance to Center
 Valve: 60' W of C/L Greenwich;
 35' N of C/L Entrance to Center
 FH: 60' W of C/L Greenwich;
 35' N of C/L Entrance to Center

34.73 L.F. 8" Pipe
 WL Sta. 1+05.00, Line 1
 End installation of RJPVC pipe under road by directional drilling with RJ connection.
 N: 1,693,324.09
 E: 1,686,055.82

WL Sta. 1+14.89, Line 1 = WL Sta. 0+00.00, Line 1A
 1 - 8"x8" CIMJ Tee
 1 - Valve Assembly, Anchored, 8" (W)
 Valve Box Elev. = 1390.65
 N: 1,693,323.91
 E: 1,686,045.93

Tee: 62' W of C/L Greenwich;
 80' N of C/L Entrance to Center
 Valve: 64' W of C/L Greenwich;
 80' N of C/L Entrance to Center

***Riser Note:**
 DICL riser pipe, CIMJ Bend, & DICL horizontal section exiting building foundation wall are to be mega-lugged together and riser is to be extended 12" above Building FFE. Riser location is approximate, building GC is required to locate Riser location per the foundation requirements. Contractor to install blind flange with 2" tap for testing. Remove flange & tap upon acceptance. Line to remote FDC is dry as exits building, no water quality testing is required.

LEGEND:
 TS = Test Station
 C/L = Center Line

WL Sta. 1+04.97, Line 2
 1 - Remote Fire Department Connection
 Bury Line Elev. = 1392.75
 CL Cap Elev. = 1392.70
 N: 1,693,277.34
 E: 1,686,043.06
 N=1,693,274.2793 E=1,685,913.7116

FDC: 195' W of C/L Greenwich;
 15' No of C/L Entrance to Center

11.25': 287' W of C/L Greenwich;
 15' So of C/L Entrance to Center

22.5': 291' W of C/L Greenwich;
 22' So of C/L Entrance to Center

Contractor to verify depth and location of existing utilities as noted for construction.

WL Sta. 0+10.33, Line 2
 1 - 8" CIMJ 45° Bend (Rt.)
 1 - 8" CIMJ 45° Bend (Rt.)
 N: 1,693,277.21
 E: 1,685,825.59

WL Sta. 0+00.00, Line 2
 1 - 6" DICL 5.50 L.F.
 1 - 6" CIMJ 90° Bend* (Vert)
 1 - 6" DICL 10.33 L.F.
 Pipe* (Horz.)
 Begin Line 2
 FFE Elev. = 1392.50
 *see riser note
 N: 1,693,220.69
 E: 1,685,925.78

90°: 291' W of C/L Greenwich;
 35' So of C/L Entrance to Center

9' So of NW Corner of Building

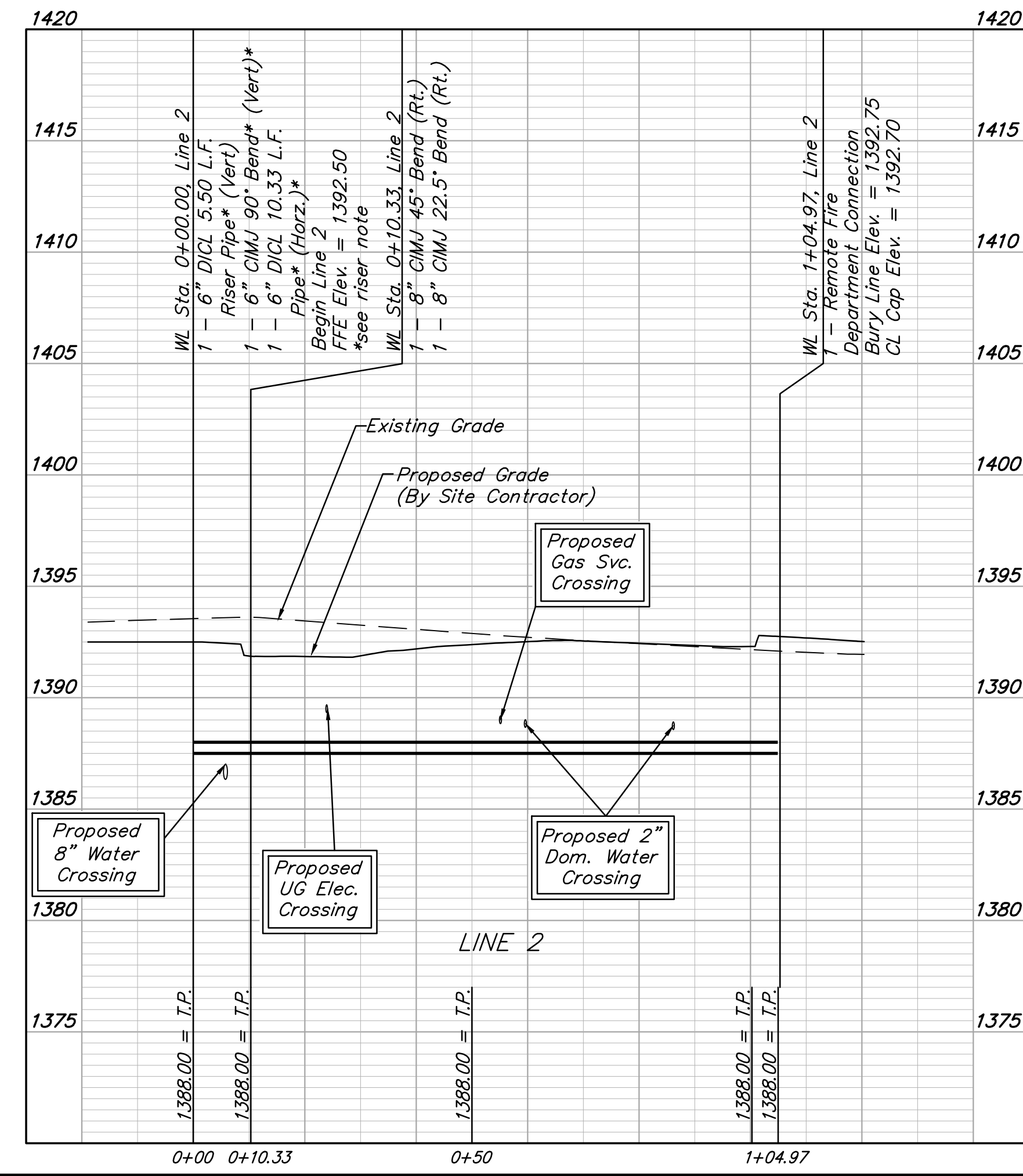
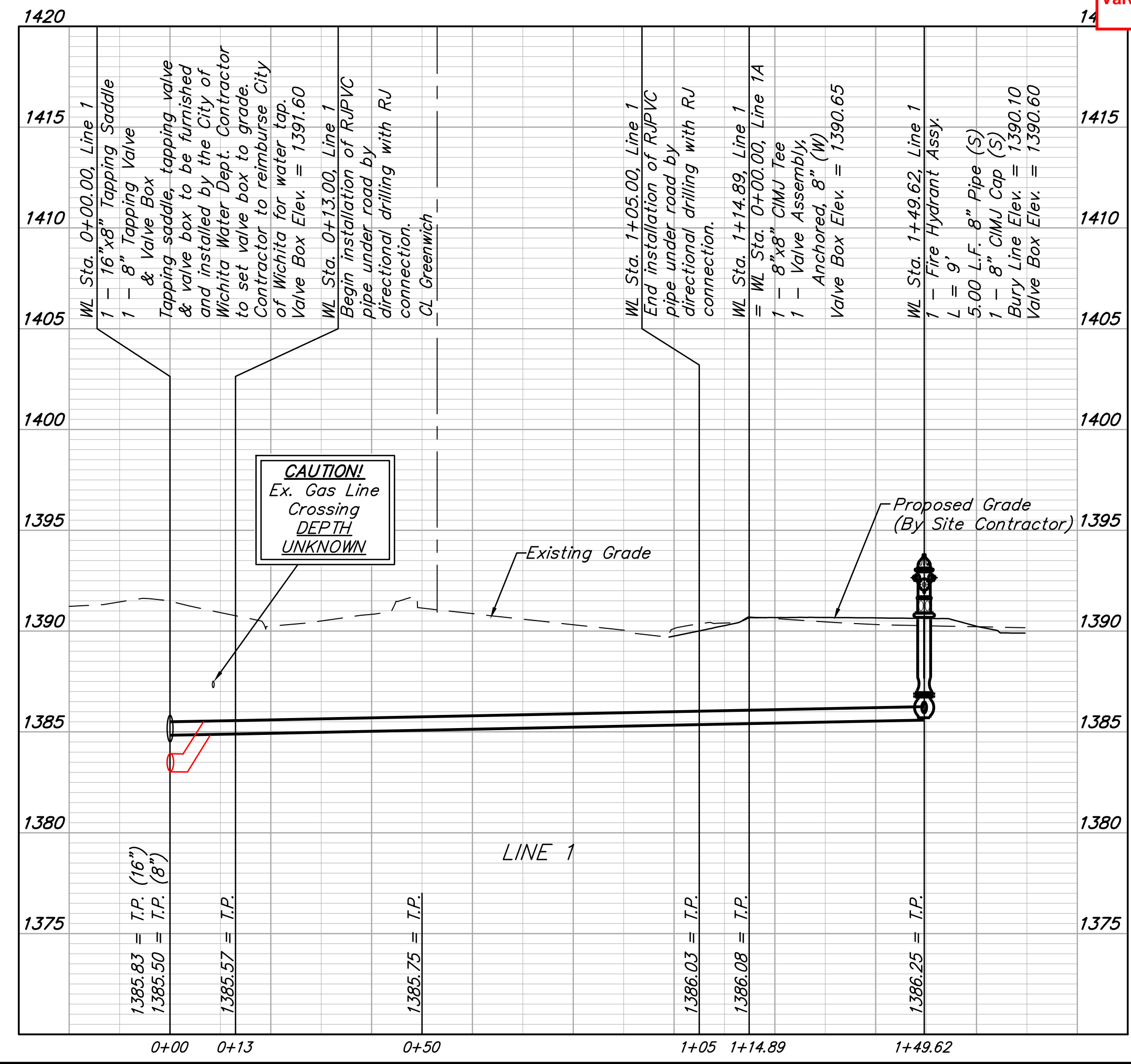
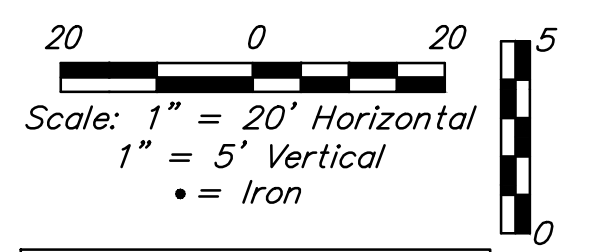
Remote FDC is ~144' from proposed hydrant, Sta. 1+49.62, Line 1.

Pipe layout is shown with horizontal and vertical deflections. Contractor to use short pipe lengths, high deflection couplers, and manufacturer recommended pipe deflections to meet planned alignment.

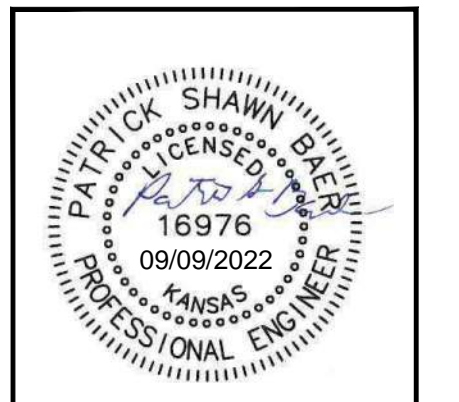
Contractor to maintain a minimum of 10' of horizontal separation (O.D.-O.D.) between sanitary sewer and water line.

Contractor to maintain a minimum of 2' of vertical separation (O.D.-O.D.) between sanitary sewer and water line.

Proposed 4" sewer service line will be encased wherever 10' OD-OD horizontal separation is not possible.



DEPTH UNKNOWN
 Contractor to Verify Depth & Location of Existing Water Line Prior to Construction.



BAUGHMAN COMPANY
 315 Ellis St.
 Wichita, KS 67211
 316-262-7271
 BaughmanCo.com

GENESIS HATCHETT
LINES 1 & 2
 Water Line IMPROVEMENTS
 PROJECT NUMBER: 22-02-E129
 DESIGN: KHS DRAWN: JA
 DATE: August 26, 2022
 SHEET 2 OF 14

File: E:\Projects\Hatchett\Genesis Of Wichita 22-02-E129\Engineering\Phase 1\PPW\HW\PPW.dwg

BENCHMARKS:
 BM #1: Square cut on top of curb, approx. 10.3' west and 28.1' north of the northeast corner of Lot 5, Block 1, Kiser West 2nd Addition, Wichita, Sedgwick County, Kansas Elevation = 1304.75 (NAVD 88)

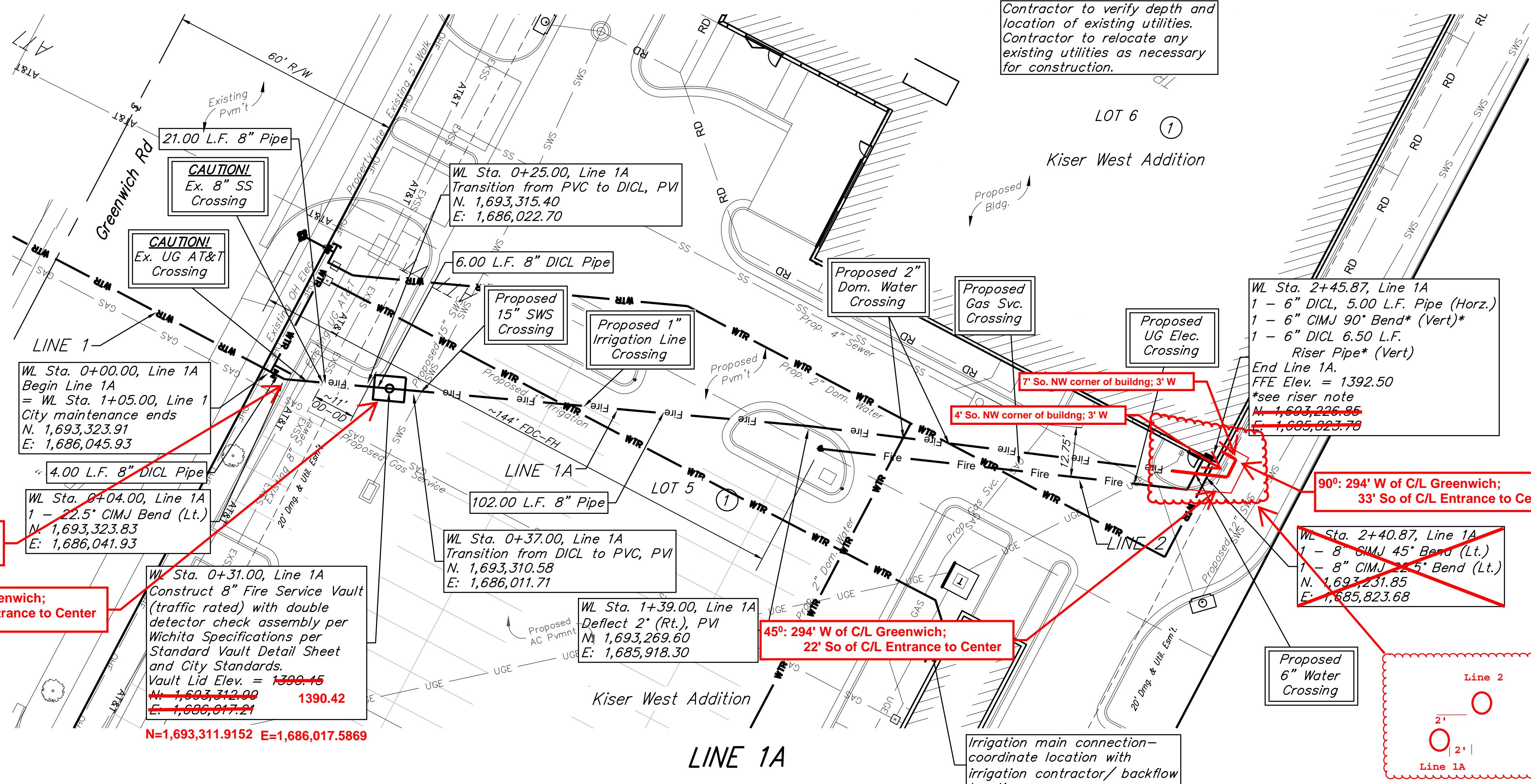
BM #2: Square cut on top of curb, approx. 26.3' west and 1,167.9' south of the northeast corner of Lot 5, Block 1, Kiser West 2nd Addition, Wichita, Sedgwick County, Kansas Elevation = 1304.75 (NAVD 88)

LEGEND:
 (TS) = Test Station
 C/L = Center line

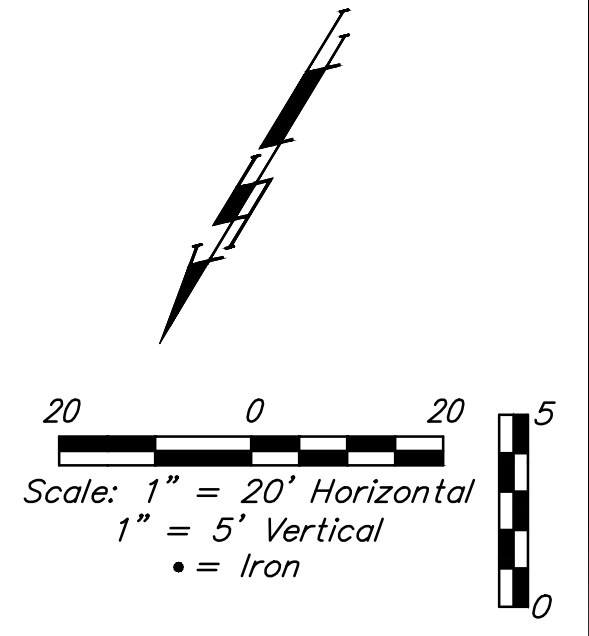
***Riser Note:**
 DICL riser pipe, CIMJ Bend, & DICL horizontal section exiting building foundation wall are to be mega-lugged together and riser is to be extended 12" above Building FFE. Riser location is approximate, building GC is required to locate Riser location per the foundation requirements. Contractor to install blind flange with 2" tap for testing. Remove flange & tap upon acceptance.

22.5°: 66' W of C/L Greenwich;
 80' No of C/L Entrance to Center

Vault: 87' W of C/L Greenwich;
 61' No of C/L Entrance to Center



Contractor to verify depth and location of existing utilities. Contractor to relocate any existing utilities as necessary for construction.



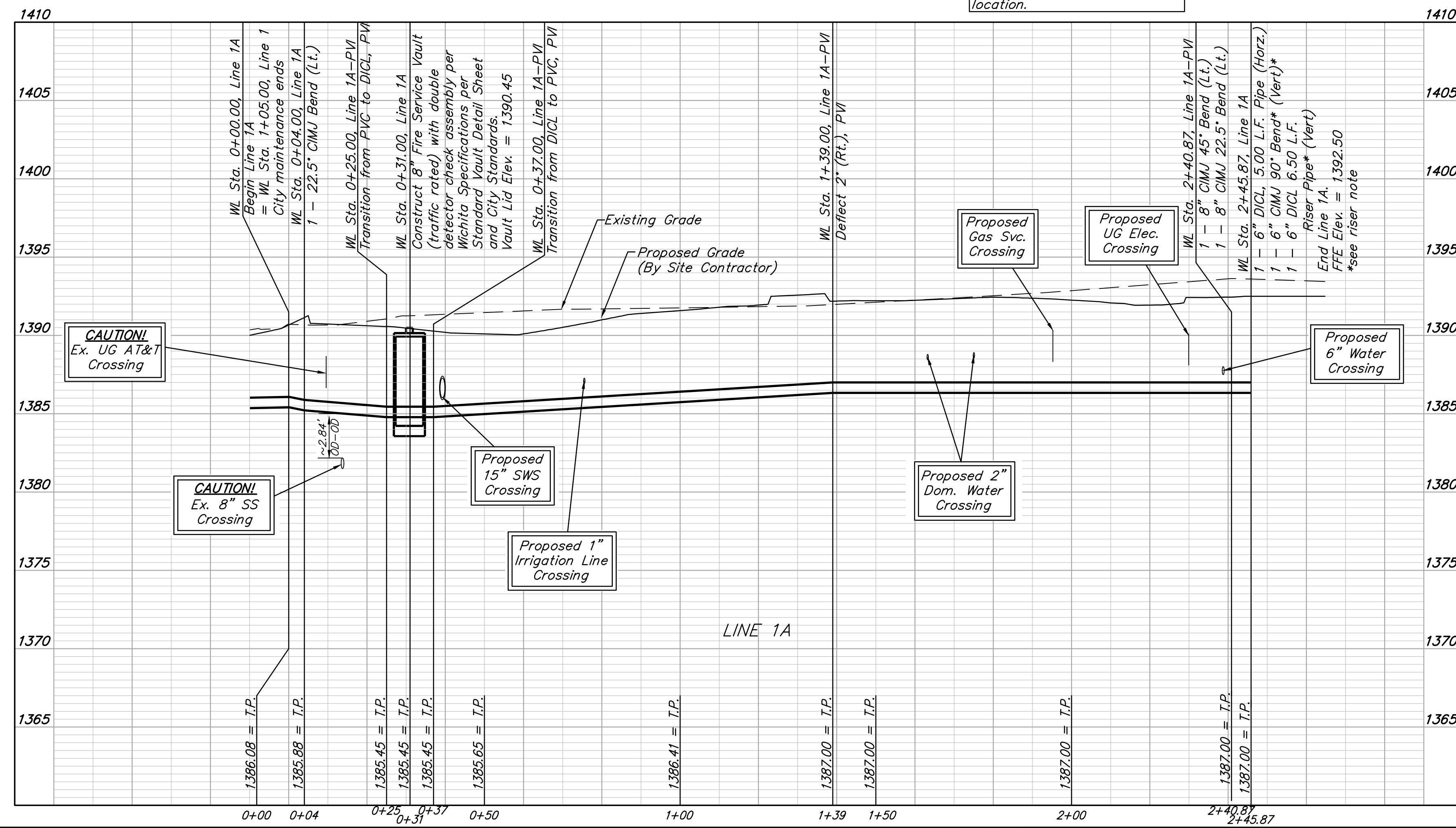
Pipe layout is shown with horizontal and vertical deflections. Contractor to use short pipe lengths, high deflection couplers, and manufacturer recommended pipe deflections to meet planned alignment.

Contractor to maintain a minimum of 10' of horizontal separation (O.D.-O.D.) between sanitary sewer and water line.

Contractor to maintain a vertical separation (O.D.-O.D.) between sanitary sewer and water line.

Proposed 4" sewer service line will be encased wherever 10' OD-OD horizontal separation is not possible.

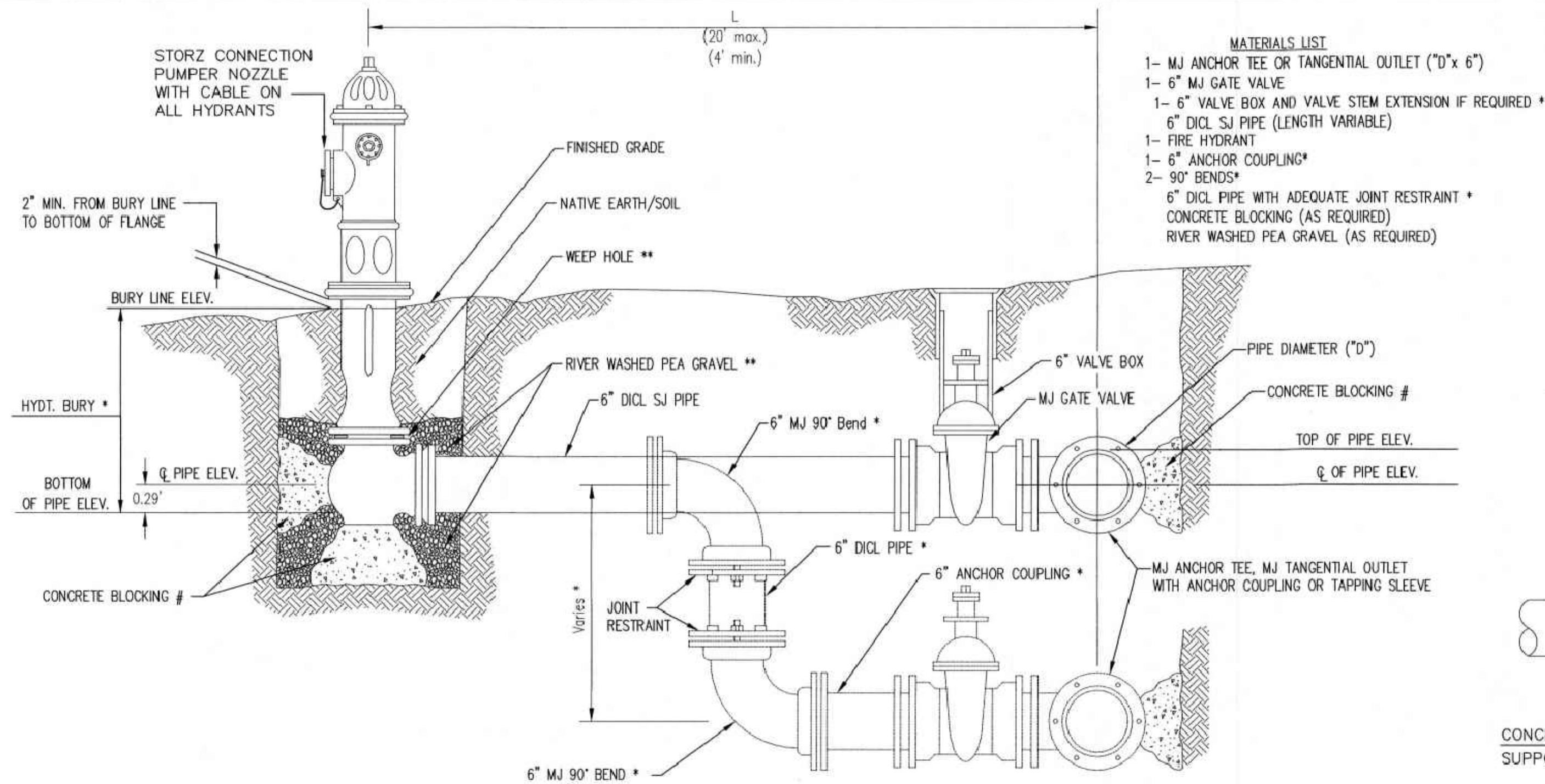
LINE 1A



BAUGHMAN COMPANY
 315 Ellis St.
 Wichita, KS 67211
 316-262-7271
 BaughmanCo.com

GENESIS HATCHETT
LINE 1A
 Water Line IMPROVEMENTS
 PROJECT NUMBER:
 22-02-E129
 DESIGN: KHS DRAWN: JA
 DATE: August 26, 2022
 SHEET **3** OF **14**

File: E:\Projects\Hatchett Genesis Of Wichita 22-02-E129\Engineering\Phase 1\PPWHGW.PPW.dwg



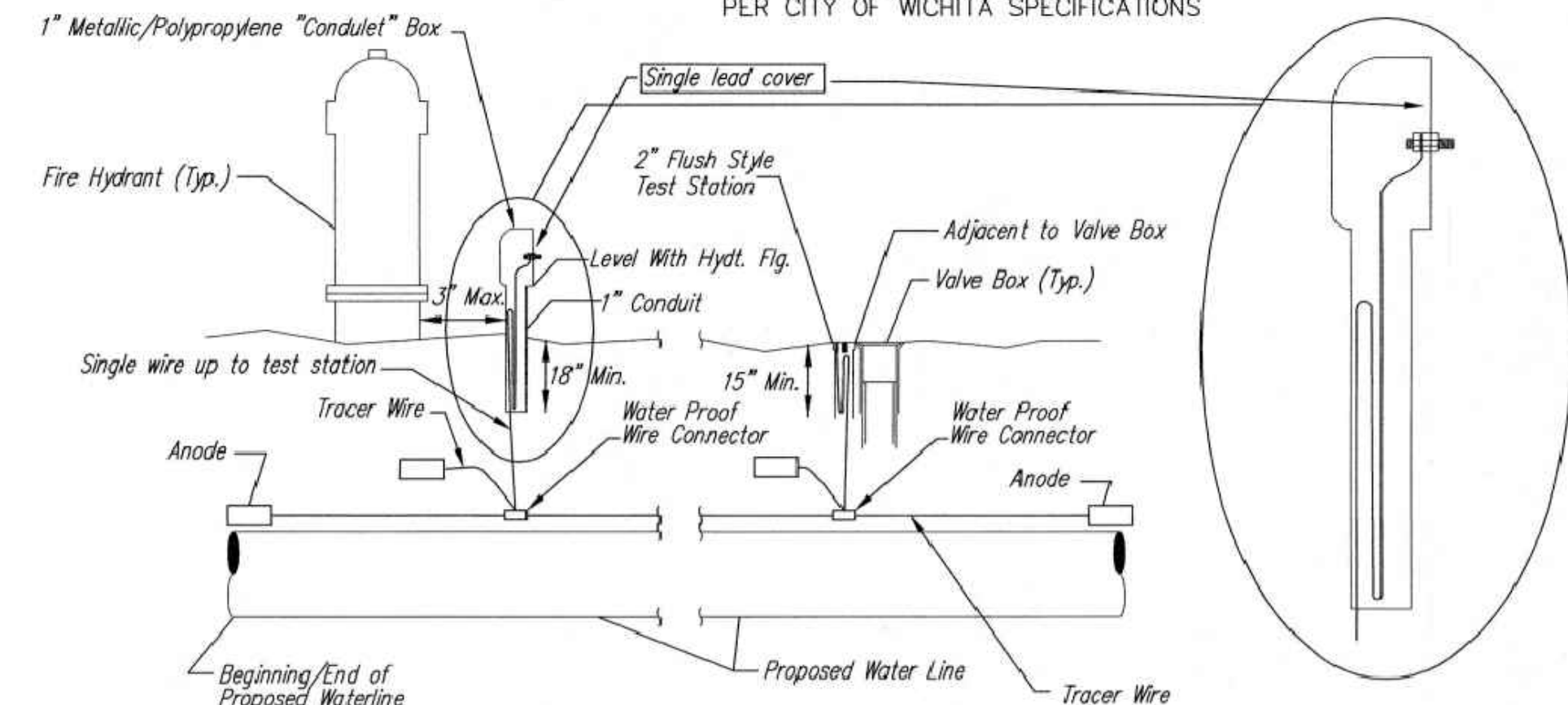
- MATERIALS LIST**
- 1- MJ ANCHOR TEE OR TANGENTIAL OUTLET ("D" x 6")
 - 1- 6" MJ GATE VALVE
 - 1- 6" VALVE BOX AND VALVE STEM EXTENSION IF REQUIRED *
 - 6" DI CL SJ PIPE (LENGTH VARIABLE)
 - 1- FIRE HYDRANT
 - 1- 6" ANCHOR COUPLING*
 - 2- 90° BENDS*
 - 6" DI CL PIPE WITH ADEQUATE JOINT RESTRAINT *
 - CONCRETE BLOCKING (AS REQUIRED)
 - RIVER WASHED PEA GRAVEL (AS REQUIRED)

* IF THE REQUIRED HYDRANT BURY IS IN EXCESS OF 5', BUT LESS THAN 7', CONTRACTOR SHALL USE STANDARD 5' HYDRANT BURY AND HYDRANT BARREL EXTENSIONS AS NECESSARY. IF THE REQUIRED HYDRANT BURY IS GREATER THAN 7', CONTRACTOR SHALL USE 5' HYDRANT BURY, 2-MJ 90° BENDS, 6" ANCHOR COUPLING AND 6" DI CL PIPE AS NECESSARY FOR VERTICAL ADJUSTMENT. THE CONTRACTOR SHALL PROVIDE ADEQUATE THRUST BLOCKING AT HYDRANT AND MEGALUGS, OR SIMILAR RESTRAINT BETWEEN 90° BENDS TO SECURE ALL FITTINGS DURING TESTING AND OPERATION. THE CONTRACTOR SHALL PROVIDE A VALVE STEM EXTENSION PER DETAIL THIS SHEET.

** CAUTION: WEEP HOLES TO BE KEPT CLEAR DURING CONSTRUCTION AND BACKFILL. CONCRETE FOR THRUST BLOCKING SHALL NOT OBSTRUCT WEEP HOLES. PLACE 1 CUBIC FOOT OF RIVER WASHED PEA GRAVEL AROUND EACH WEEP HOLE.

CONCRETE THRUST BLOCKING SHALL BE KEPT CLEAR OF BOLTS, NUTS, AND MJ ACCESSORIES.

FIRE HYDRANT ASSEMBLY
PER CITY OF WICHITA SPECIFICATIONS



TRACER WIRE
Conductive type pipe locator/tracer wire shall be install to locate all waterline pipe regardless of pipe material. The wire shall extend the entire length of the proposed pipe. The wire shall be taped to the waterline and pulled with the pipe. A waterproof connector shall be used at splice locations. A complete list of approved tracer wire and waterproof connectors can be found on the City of Wichita's website at www.wichita.gov.

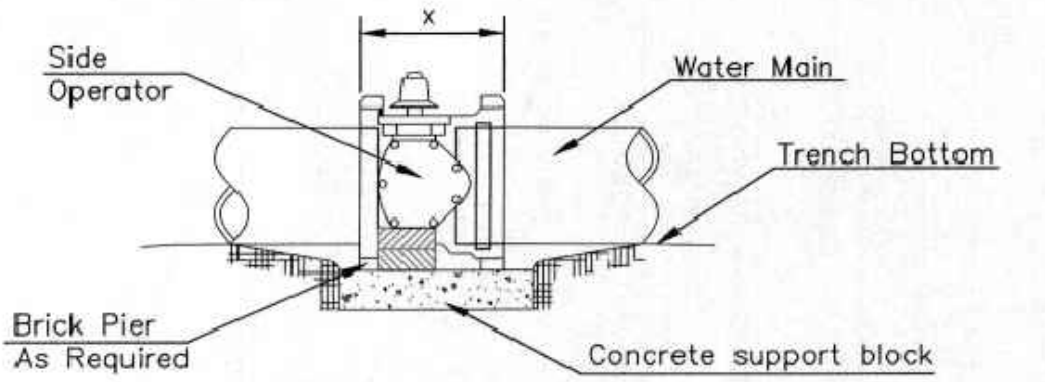
WIRES
The tracer wire shall be Blue No. 12 AWG CCS with 45 mil HDPE insulation. To allow for grade adjustment, a minimum of 12" of excess wire shall be coiled at the bottom of the test station for all wires. Wire connectors shall be installed per manufacturer recommendations. Contractor shall attach wire being installed with proposed water main to any tracer wire installed with adjacent waterline projects.

TEST STATIONS
The test station for fire hydrant application shall be a 1" "conduit" style station as manufactured by AGRA Industries with a removable solid cover having a single lead extending from the face or approved equal. The "conduit" style test station shall be attached to a 1" rigid galvanized conduit with a minimum length of 36" and plastic end bushing. The flush style shall have the word "WATER" stamped or molded into the lid. The test station for valve applications shall be a 2" flush style test station with wire connector on lid. Model # T2PH7B1LP Handley Industries or CD14*TP SnakePit as manufactured by Copperhead Industries or approved equal. The flush style shall have the word "WATER" stamped or molded into the lid. All test stations shall be manufactured using molded blue tops or sufficiently coated with blue enamel paint. The tracer wire and the anode wire shall be install to allow 12" of wire within the test station. The location of all test stations shall be recorded, and shown in the as-built drawings. Flush style test stations shall not be installed in pavement or sidewalk unless approved by the Engineer. Contractor shall extend tracer wire & move flush mount test station to nearest location out of pavement or sidewalk.

ANODES
The anodes shall be 3 lb. bare zinc or magnesium. The anodes shall be buried at the same elevation as the waterline at each test station. The anodes shall be connected to 12 AWG CCS which shall be extended to the test station.

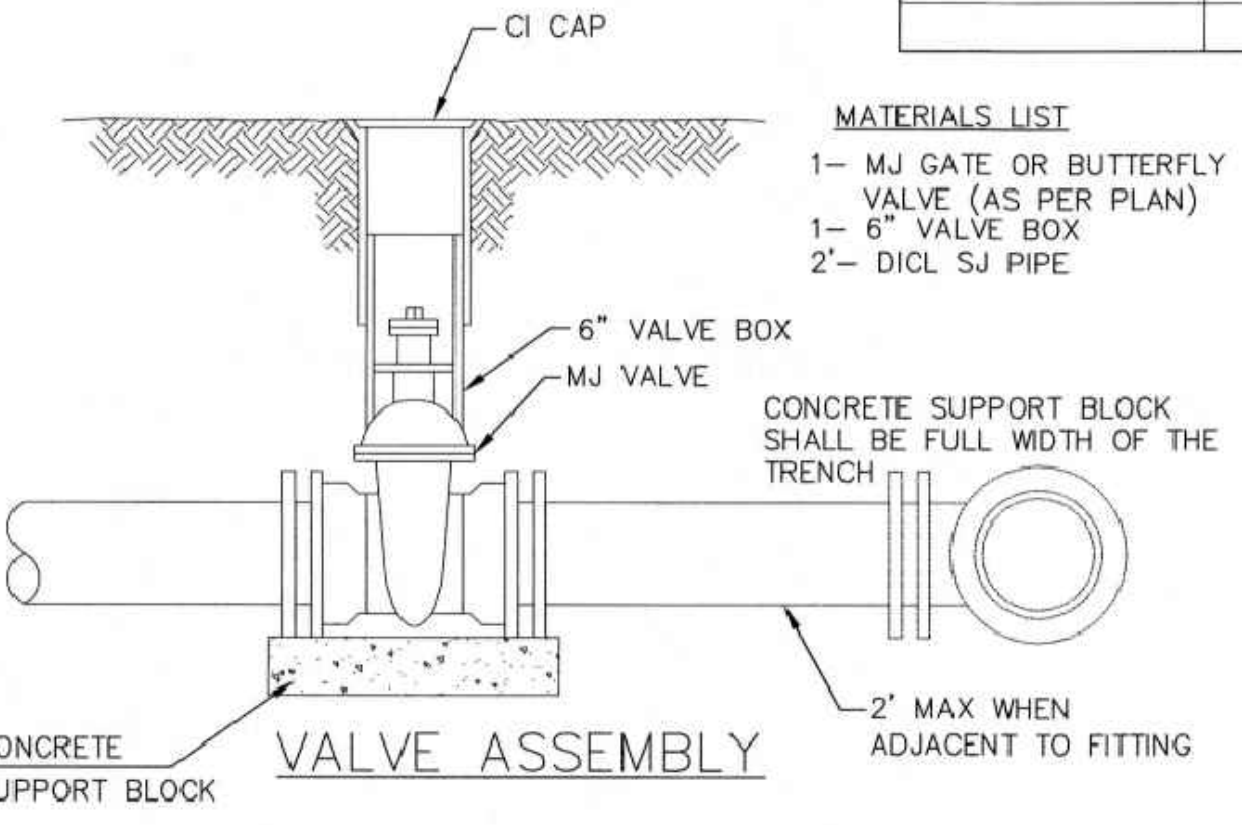
TRACER WIRE DETAIL
COST IS SUBSIDIARY TO PIPE INSTALLATION

FIRE HYDRANTS REQUIRED				
STATION	BURY LINE ELEVATION	TOP OF PIPE ELEVATION	FIRE HYDRANT BURY REQUIRED*	VALVE STEM EXT. REQUIRED (ft)*
1+49.62	1390.10	1386.25	4.5'	-

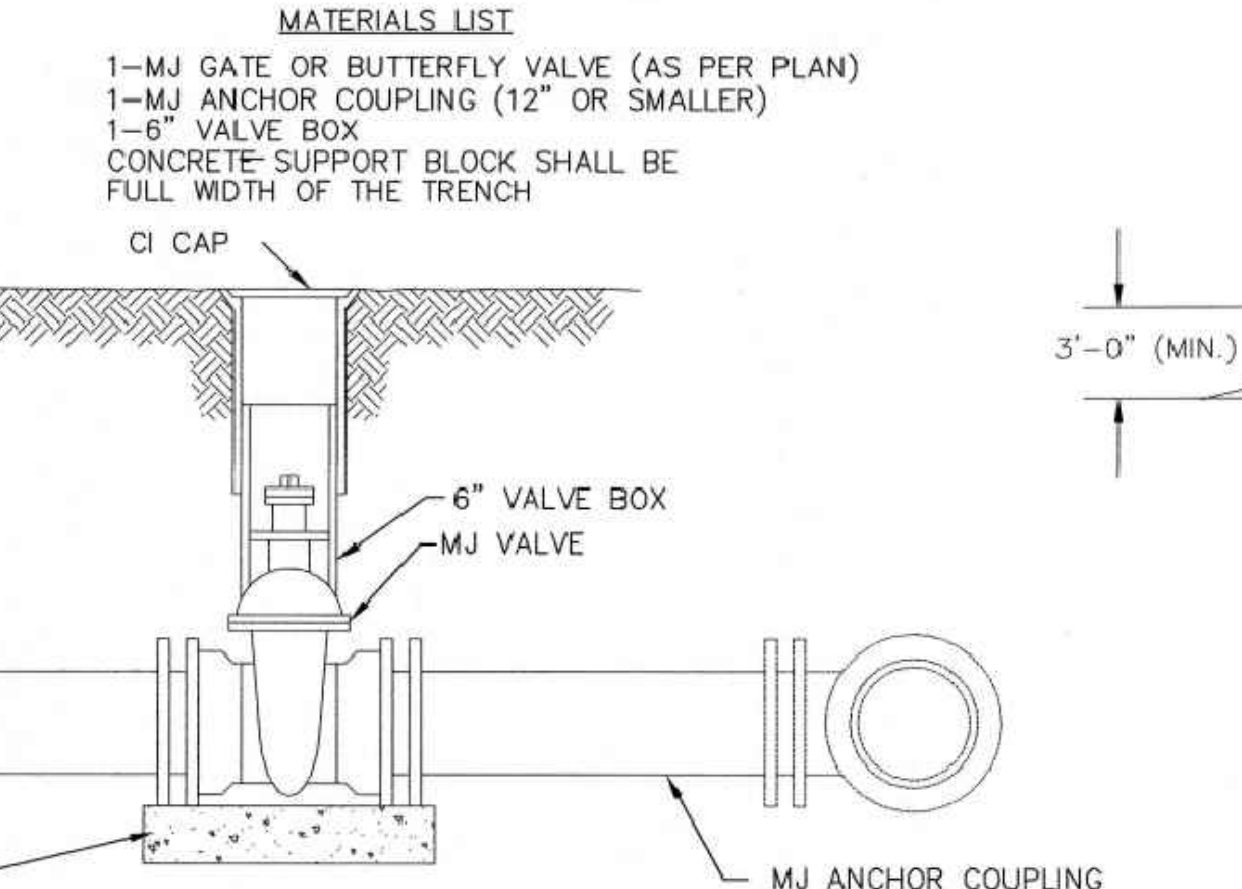


- NOTES**
- This detail covers Butterfly Valve installation, inclusive, regardless of type of pipe or joint used. 24" and larger lines to be detailed on plans.
 - 6" Valve Box and Cover required per City of Wichita Std. Specifications.
 - Conc. Support Block to be full width of trench.

CONCRETE SUPPORT BLOCKING FOR BUTTERFLY VALVE INSTALLATION

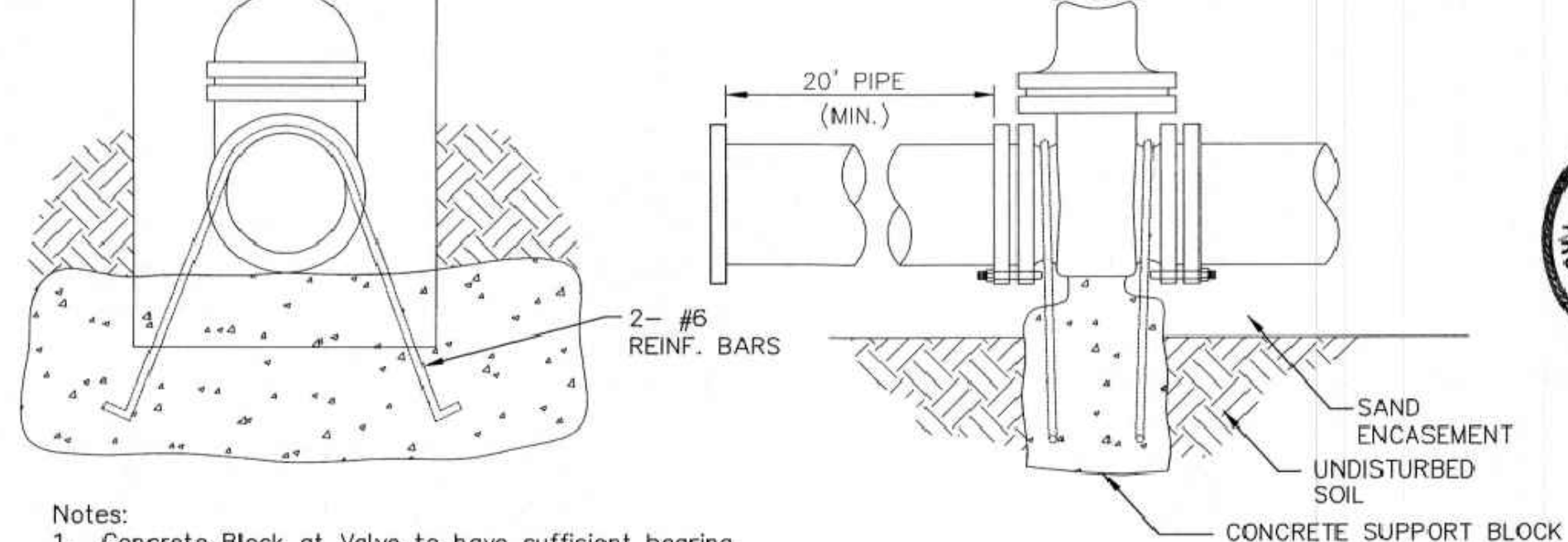


- MATERIALS LIST**
- 1- MJ GATE OR BUTTERFLY VALVE (AS PER PLAN)
 - 1- 6" VALVE BOX
 - 2'- DI CL SJ PIPE



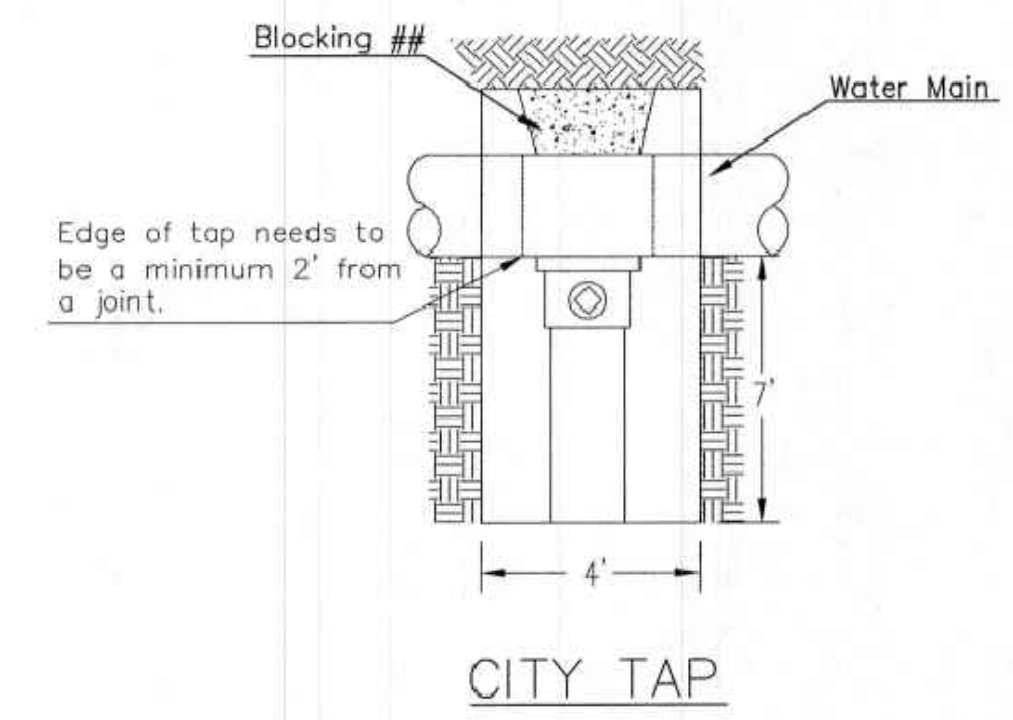
ANCHORED VALVE ASSEMBLY, SPECIAL

- MATERIALS LIST**
- 1- MJ GATE OR BUTTERFLY VALVE (AS PER PLAN)
 - 1- CI MJ CAP WHEN NECESSARY
 - 1- 6" VALVE BOX
 - 20' OF PIPE (BID WITH PIPE)
 - 2 - #6 REINF. BARS
 - CONCRETE SUPPORT BLOCK SHALL BE FULL WIDTH OF THE TRENCH



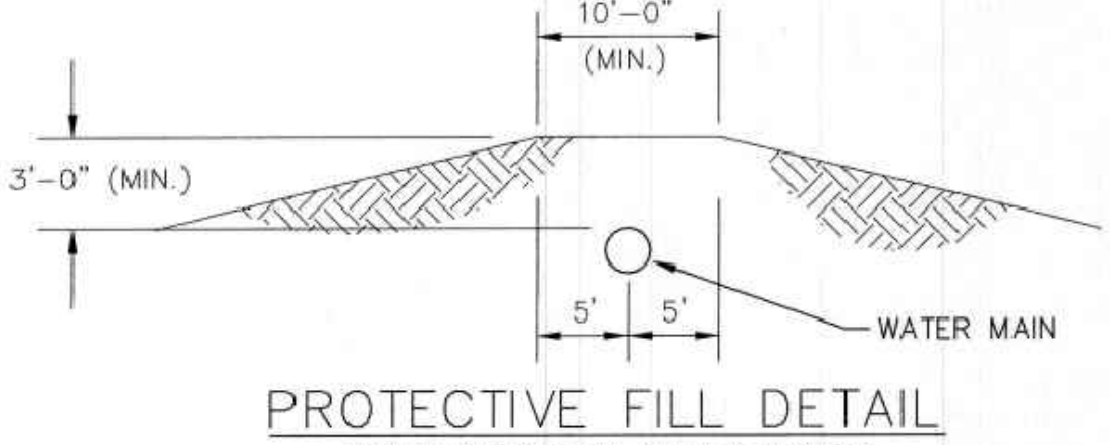
- Notes:**
- Concrete Block at Valve to have sufficient bearing in undisturbed soil to prevent thrust movement as shown in table at right. Field Engineer to determine thrust loading of undisturbed soil and final size of thrust block.
 - The thrust block shall be constructed such that bolts, nuts, and other MJ accessories are kept clear of concrete.
 - All valves at dead ends and at other locations as called out on the plans shall be blocked as shown here.

VALVE	THRUST AT 150 #/sq
4"	1809 lbs.
6"	4245 lbs.
8"	7540 lbs.
12"	16965 lbs.



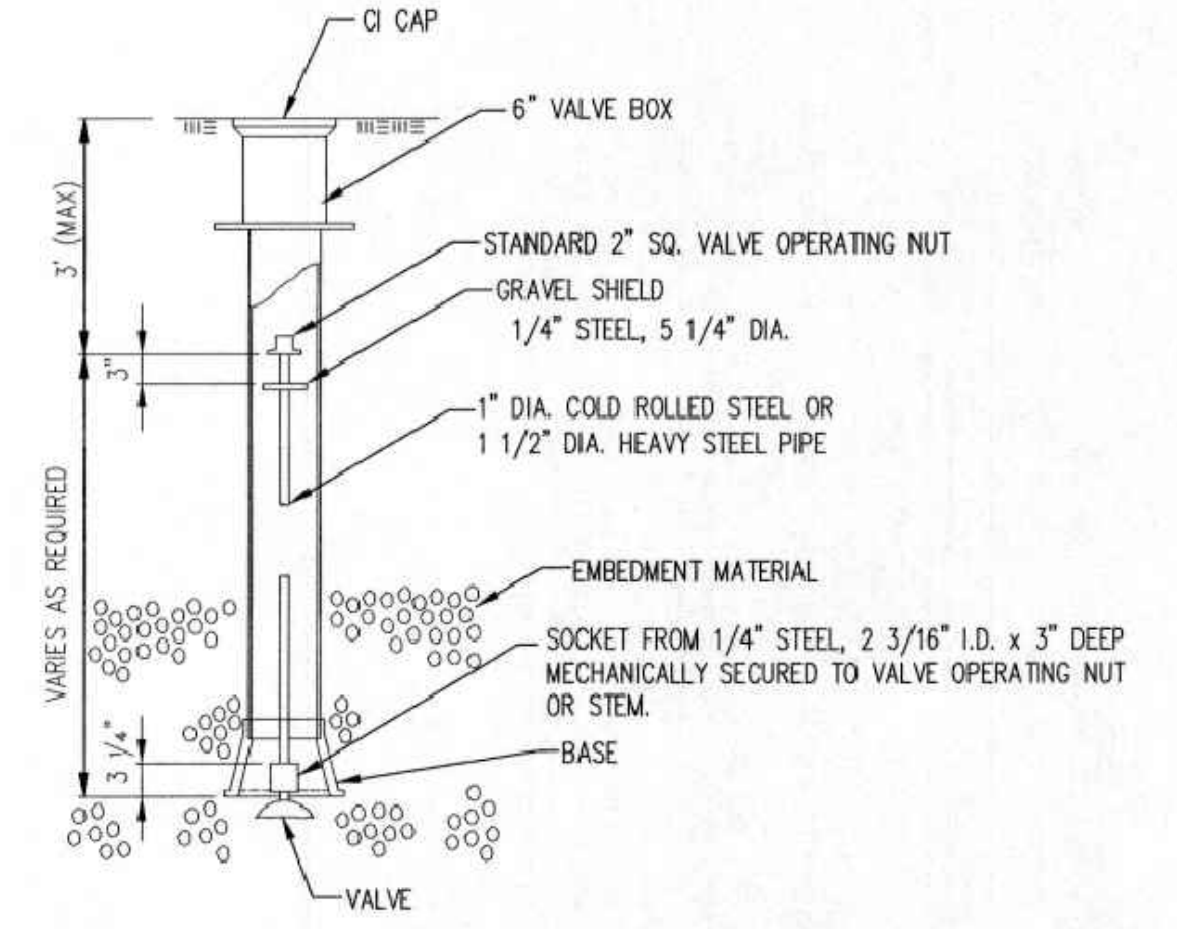
CITY TAP

When the City of Wichita makes tap, blocking is to be done by Contractor



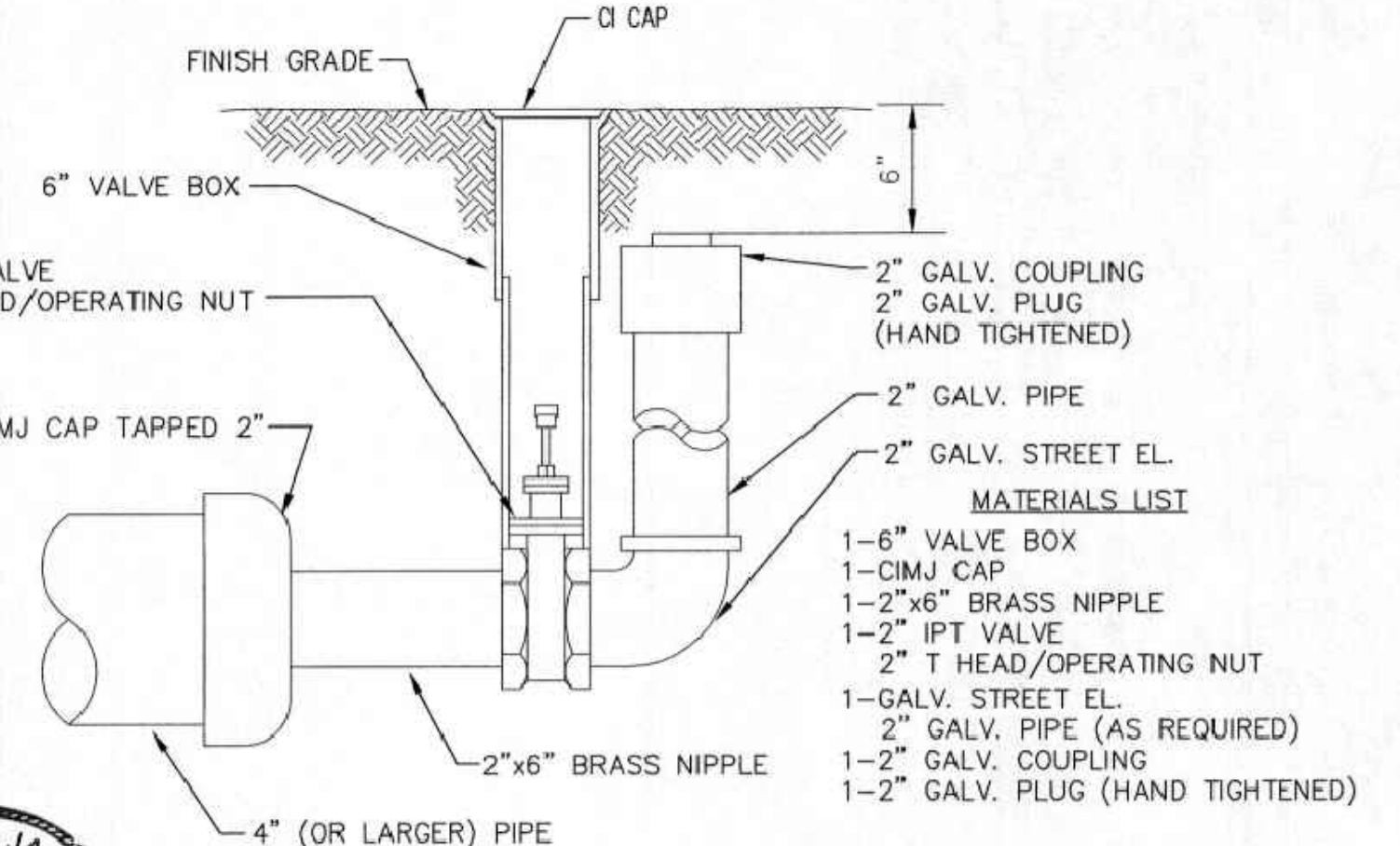
PROTECTIVE FILL DETAIL

MINIMUM PROTECTIVE FILL SHALL BE PROVIDED IN ALL INSTANCES WHERE COVER OVER THE PROP. WATER LINE IS LESS THAN 3'. (COST SUBSIDIARY TO PIPE INSTALLATION)



VALVE STEM EXTENSION DETAIL

NOTE: ONE VALVE STEM EXTENSION FOR EACH VALVE BURIED GREATER THAN 5'.



2" BLOWOFF ASSEMBLY



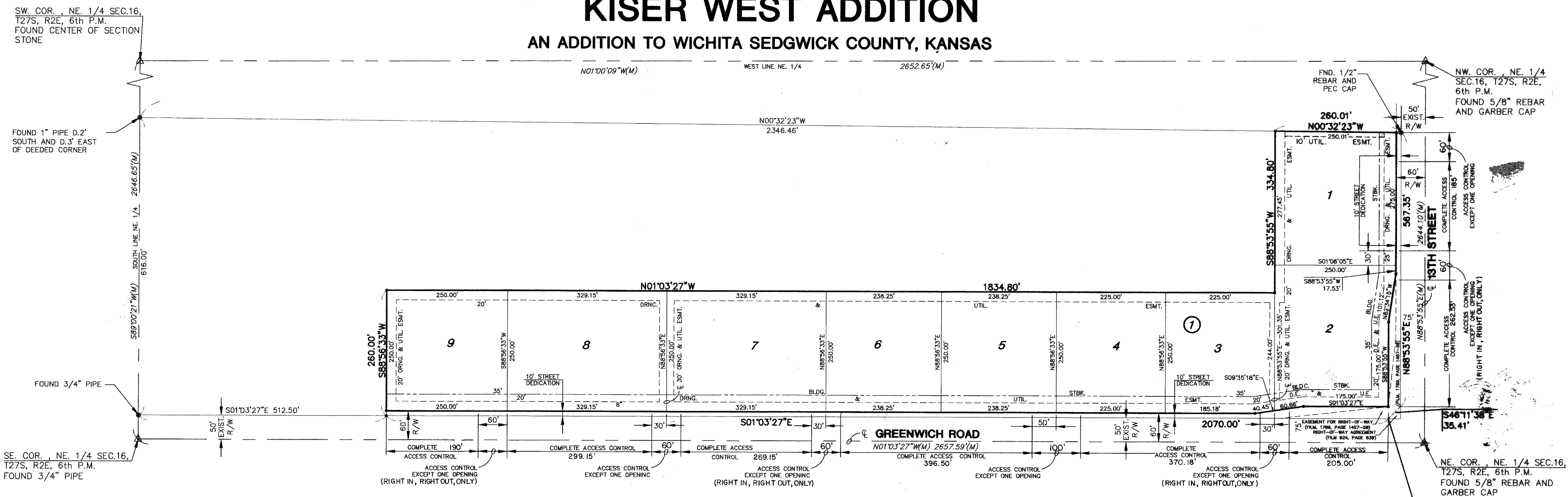
STANDARD WATER ASSEMBLY DETAIL

CITY ENGINEER
GARY JANZEN, P.E.

PROJECT NUMBER	OCA NUMBER	DATE
CITY ENGINEER'S OFFICE CITY HALL - SEVENTH FLOOR 455 NORTH MAIN STREET WICHITA, KANSAS 67202-1620 (316) 268-4501		SHEET 5 of 14

REVISED: OCTOBER 2016

FINAL PLAT KISER WEST ADDITION AN ADDITION TO WICHITA SEDGWICK COUNTY, KANSAS



I, Gregory J. Allison, a Registered Land Surveyor in Kansas, do hereby certify that I have been in responsible charge of surveying and plotting of "KISER WEST ADDITION", an addition to Wichita, Sedgwick County, Kansas, into Lots, and a Block, the same being accurately set forth in the accompanying plat and described herein:

A tract of land lying in the Northeast Quarter, Section 16, Township 27 South, Range 2 East of the 6th Principal Meridian, Wichita, Sedgwick County, Kansas, more particularly described as follows:

Beginning at a point 75.00 feet South of the North line of said Northeast Quarter and 50.00 feet West of the East line of said Northeast Quarter; thence on a Kansas South-Zone Grid bearing of S01°03'27"E, 2070.00 feet parallel with the East line of said Northeast Quarter; thence S88°56'33"W, 280.00 feet; thence N01°03'27"W, 1834.80 feet; thence S88°53'55"W, 334.80 feet; thence N00°32'23"W, 250.01 feet to a point 50.00 feet South of said North line; thence N88°53'55"E, 567.35 feet to a point 75.10 feet West of said East line; thence S46°11'38"E, 35.41 feet along a Right of Way Agreement set forth on Film 624, Page 839 to the point-of-beginning.

I hereby certify that the details of this plat are correct to the best of my knowledge and belief this 9th day of November, 2001.

Gregory J. Allison
 Gregory J. Allison, Registered Land Surveyor
 MKEC Engineering Consultants, Inc.
 411 North Webb Road
 Wichita, Kansas 67205

Know all men by these presents that we the undersigned property owners of the land above set forth in the Registered Land Surveyor's Certificate, have caused the same to be surveyed and plotted into Lots, and a Block, the same to be known as "KISER WEST ADDITION", an addition to Wichita, Sedgwick County, Kansas. Easements for the construction and maintenance of public utilities, and drainage, as indicated on the accompanying plat are hereby granted. The streets are hereby dedicated to and for the use of the public. A drainage plan has been developed for this plat and all drainage easements, right-of-way, or reserves shall remain at established grades or as modified with the approval of the applicable City or County Engineer, and unobstructed to allow for the conveyance of storm water. All egress right of access to or from North Greenwich Road over and across the East line of "KISER WEST ADDITION", are hereby granted to the appropriate governing body, as indicated on the face of the plat. All egress right of access to or from North Greenwich Road over and across the East line of "KISER WEST ADDITION", are hereby granted to the appropriate governing body, as indicated on the face of the plat. This plat is subject to the conditions of the Kiser West Community Unit Plan (CUP 2000-21, DP - 254).

20.00
CR

Kiser Inc., a Kansas Corporation

A. Dwyne Dardick
 A. Dwyne Dardick, President

STATE OF KANSAS)
) ss.
 SEDGWICK COUNTY)

BE IT REMEMBERED, that on this 15th day of November, 2001, before me the undersigned, a Notary Public in and for the County and State aforesaid, came A. Dwyne Dardick, President Kiser Inc. to me personally known to be the same person who executed the foregoing instrument of writing and duly acknowledged the execution of the same.

IN WITNESS WHEREOF, I have hereunto set my hand and affixed my official seal, the day and year last above written.

Krista L. Peterson
 Krista L. Peterson, Notary Public
 My appointment expires: MAE 05-31-2005

This plat of "KISER WEST ADDITION", has been submitted to and approved by the Wichita-Sedgwick County Metropolitan Area Planning Commission, Wichita, Kansas. Dated this 9th day of August, 2001.

WICHITA-SEDGWICK COUNTY METROPOLITAN PLANNING COMMISSION
J. Michael Acting Chair
Marvin S. Krout Secretary

This plat approved and all dedications shown thereon, if accepted by the City Council of the City of Wichita, Kansas, this 15 day of January, 2002

At the Direction of the City Council
Chris Chalkley City Manager
Pat Bennett City Clerk
Kathy Pewewery

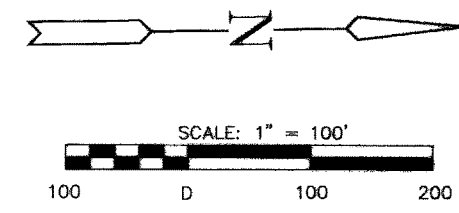
Entered on transfer record this 22nd day of January, 2002
Don Bruce County Clerk
 Don Bruce, County Clerk

STATE OF KANSAS)
) ss.
 SEDGWICK COUNTY)
 This is to certify that this instrument was filed for record in the Register of Deeds office this 9th day of January, 2002, at 1:40 o'clock PM, and is duly recorded.

Bill Meek Register of Deeds
 Bill Meek, Register of Deeds
Carla Kizore Deputy
 Carla Kizore, Deputy

Reviewed in accordance with K.S.A. 58-2005 on this 6th day of November, 2001.

Tricia L. Rabello Deputy County Surveyor
 Tricia L. Rabello, LS #1246
 Deputy County Surveyor
 Sedgwick County, Kansas



- LEGEND**
- = FOUND 1/2" REBAR AND PEC CAP
 - ▲ = SET 5/8" REBAR/MKEC CLS 39
 - △ = FOUND SECTION CORNER MONUMENT
 - (M) = MEASURED DIMENSION
 - U.E. = UTILITY EASEMENT
 - D.E. = DRAINAGE EASEMENT

This digital plat record accurately reproduces in all details the original plat filed with the Sedgwick County Register of Deeds. Digitized under the supervision of Register of Deeds Bill Meek by Sedgwick County Geographic Information Systems.
 Bill Meek, Register of Deeds
 Digitized edition of original signature

**FOR REFERENCE ONLY
 NOT TO SCALE**



**BAUGHMAN
 COMPANY**

315 Ellis St.
 Wichita, KS 67211
 316-262-7271
 BaughmanCo.com

GENESIS
 HATCHETT
**Copy
 of
 Plat**

Water Line
 IMPROVEMENTS

PROJECT NUMBER:
 22-02-E129

DESIGN: KHS DRAWN: JA

DATE: May 25, 2002

SHEET **14** OF **14**