

STA 0+00.00 LINE 1
 BEGIN CONSTRUCTION 2-24" RCP. INSTALL 24" RCP END SECTIONS W/ 17 S.Y. LIGHT STONE RIP RAP.
 FL = 1318.90

REMOVE EXISTING FENCE AS NECESSARY FOR CONSTRUCTION.

STA 0+63.36 LINE 1
 CONSTRUCT TYPE 1A 5'X3' CURB INLET.
 TOP ELEV. = 1324.00

STA 1+04.07 LINE 1
 CONSTRUCT TYPE 1A 5'X3' CURB INLET.
 TOP ELEV. = 1324.00

STA 2+25.45 LINE 1
 END CONSTRUCTION 2-24" RCP. INSTALL 24" RCP END SECTIONS.
 FL = 1320.00



SCALE 1" = 20'
 VERT. 1" = 5'

STA 0+38.70 LINE 2
 END CONSTRUCTION 18" RCP END SECTION
 FL = 1316.79

REMOVE EXISTING FENCE AS NECESSARY FOR CONSTRUCTION.

STA 0+00.00 LINE 2=
 STA 0+00.00 LINE 3
 CONSTRUCT TYPE P MANHOLE
 TE = 1319.95

BAYSIDE CIR.
 RESERVE "A"

STA 0+42.61 LINE 3
 END CONSTRUCTION 18" RCP END SECTION
 FL = 1316.83

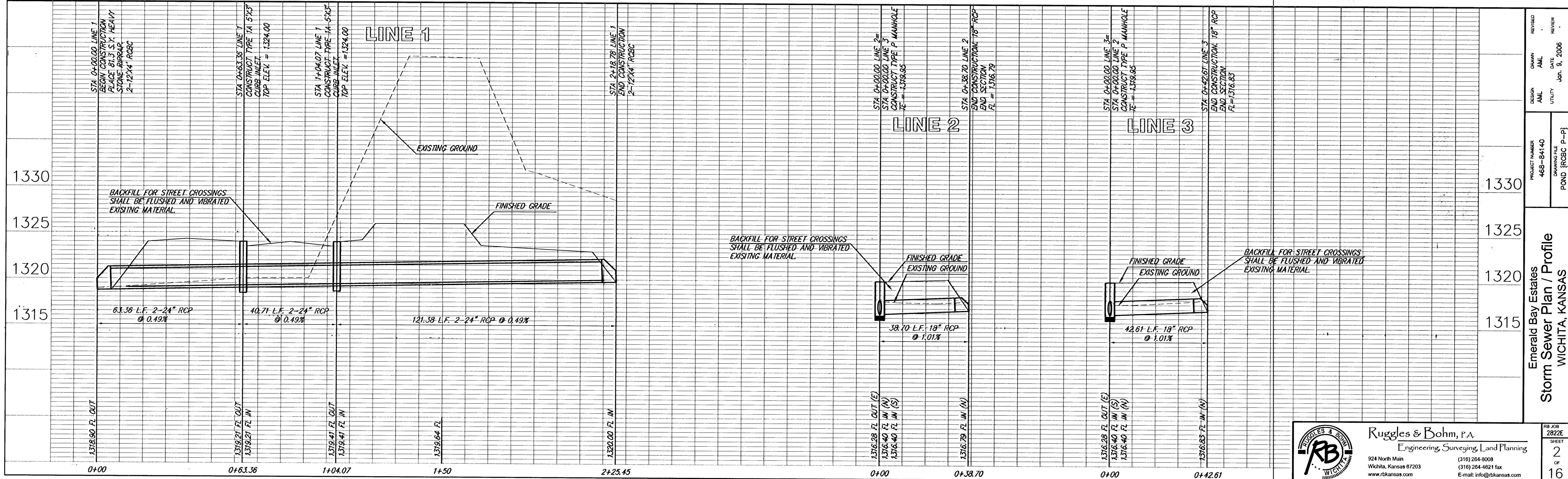
REMOVE EXISTING CMP AND ENTRANCE.



SCALE 1" = 20'
 VERT. 1" = 5'

RESERVE "E"
 Emerald Bay Estates

Unplatted



DESIGN	AML	UTILITY	DATE	REVIEW
			Jan. 9, 2006	

PROJECT NUMBER	468-84140
DRAWING FILE	POND (RCBC P-P)

Emerald Bay Estates
 Storm Sewer Plan / Profile
 WICHITA, KANSAS

Ruggles & Bohm, P.A.
 Engineering, Surveying, Land Planning
 924 North Main
 Wichita, Kansas 67203
 www.rbkansas.com
 (316) 264-8008
 (316) 264-4621 fax
 E-mail: info@rbkansas.com

RS JOB NUMBER	2822E
SHEET	2
OF	16