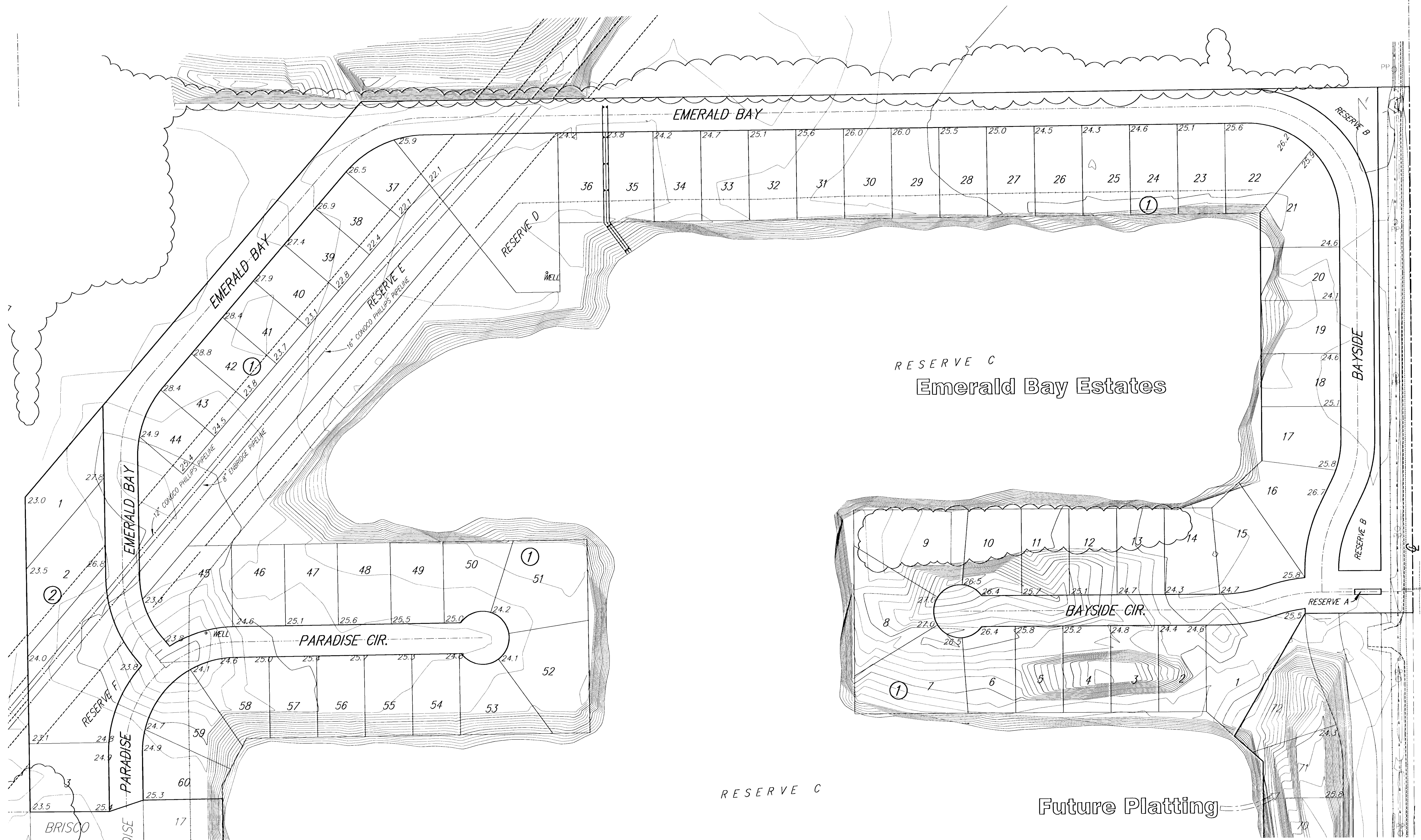


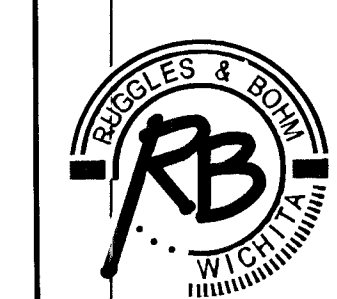


SCALE: 1" = 100'



NOTE: GRADING OPERATIONS LOCATED WITHIN THE BOUNDARIES OF THE FINAL PLAT FOR EMERALD BAY ESTATES SHALL BE IN SUBSTANTIAL COMPLETION BY MAY 1, 2006.

**Emerald Bay Estates
Lot Grading Plan
WICHITA, KANSAS**



Ruggles & Bohm, P.A.
Engineering, Surveying, Land Planning
924 North Main
Wichita, Kansas 67203
www.rbkansas.com
(316) 264-8008
(316) 264-4621 fax
E-mail: info@rbkansas.com

DRAWING FILE: Grading {Four...01}
PROJECT NUMBER: 468-84140

DESIGN	AML	SHEET 7 OF 16
DRAWN	AML	
REVIEW		
UTILITY		
DATE	Dec. 22, 2005	