

Lateral 12, Main 2, Cowskin Creek Interceptor Sewer SANITARY SEWER IMPROVEMENTS

to serve

AUBURN HILLS 16TH ADDITION PHASE I

CITY OF WICHITA, KANSAS

James L. Armour, P.E. City Engineer

Project Number

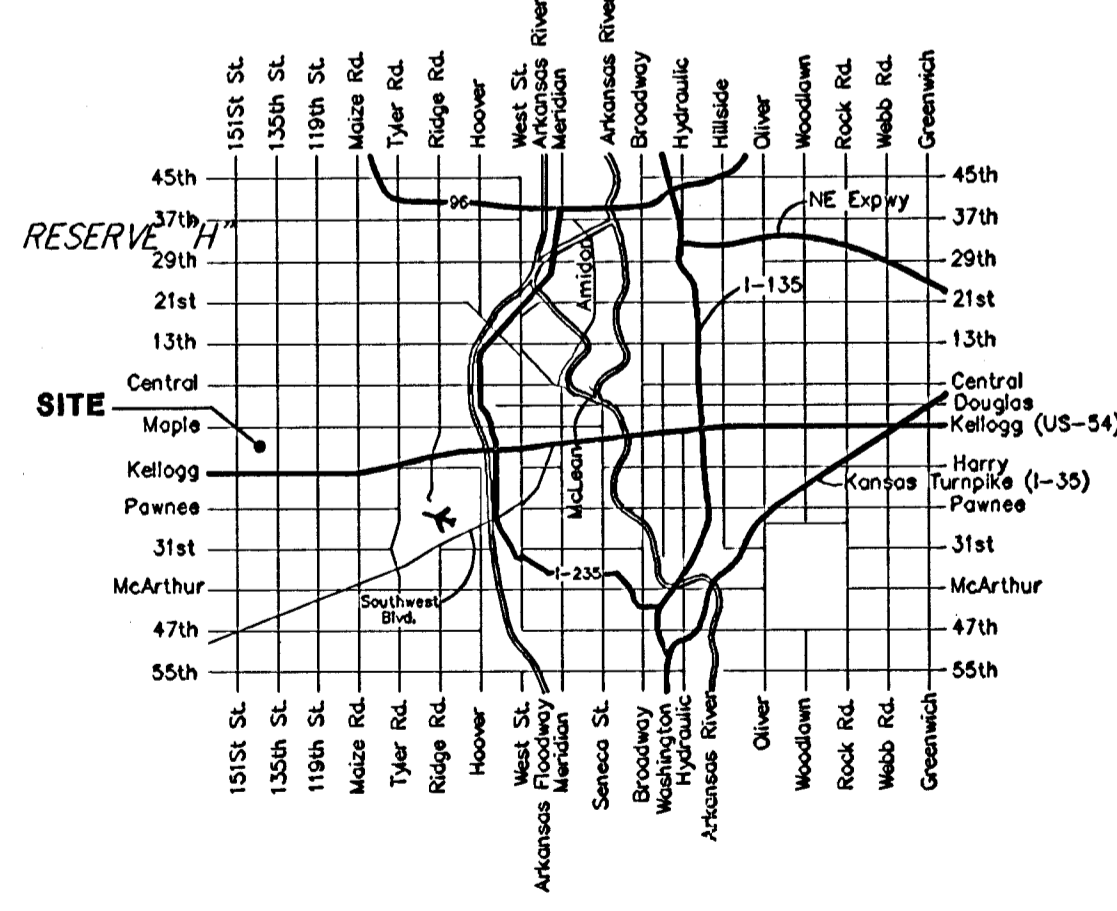
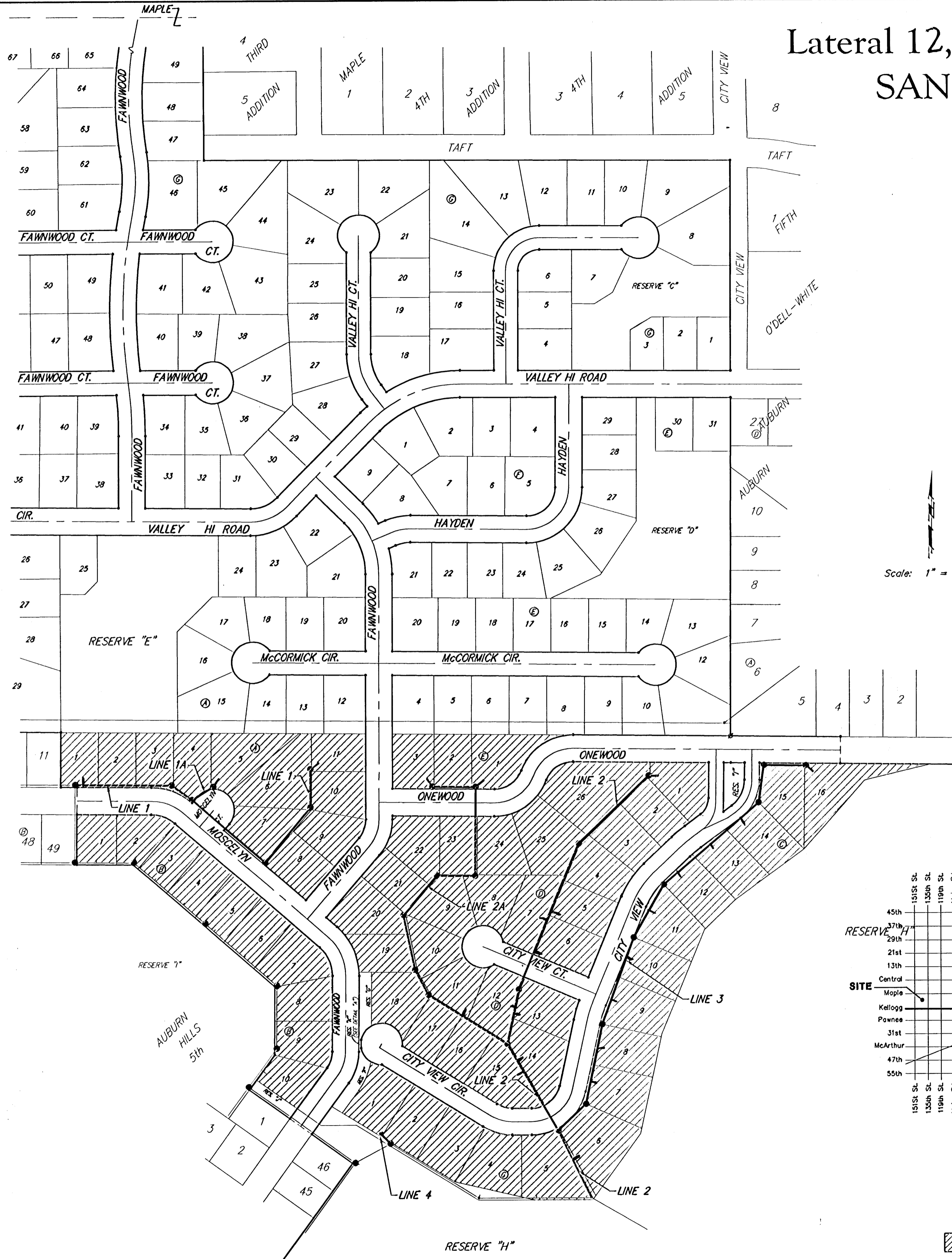
468-84089

O.C.A. Number

744154

Duling Construction Co., Inc. - Contractor
Edingfield, Baughman - Inspector
Released 6/9/06
As-Built
Risers + Stubs
.pdf by JDL 7/13/06

Scale: 1" = 150'



Vicinity Map

Benefit District

GENERAL NOTES:

- Contractor will be required to provide notice to utility companies a minimum of Forty-Eight (48) hours prior to any excavation, as follows:
Kansas One-Call 687-2470
The Contractor must notify the following in case of an emergency:
Cox Communications 262-4270
Kansas Gas Service 1-888-482-4950
Wester Energy 383-8650
Aquila Energy 1-800-303-0357
Southwestern Bell 268-2245
City of Wichita Water Dept. 268-4563
City of Wichita Sewer Maint. 268-4024
City of Wichita Storm Sewer Maint. 268-4030
City of Wichita Traffic Maint. 268-4034
Conoco Pipeline Co. 1-800-231-2551
Williams Pipeline Co. 529-6600
Phillips Pipeline Co. 1-800-766-8230
- Utility service lines, poles, valve boxes, meters, and etcetera are to be adjusted as necessary by others prior to construction unless the plans specifically call for their adjustment by the Contractor or unless the plans specifically identify a utility to be adjusted by its owner during construction. Existing utilities and their location, as shown on the plans, represent the best information obtainable for design. The Contractor will be required to work around existing utilities within the right-of-way which do not conflict with proposed construction.
- Rubble from the removal of miscellaneous structures and excess excavation which is to be wasted shall be disposed of on sites to be provided by the Contractor. These sites shall be approved by the Engineer as to suitability, appearance on site location, in the opinion of the Engineer, will leave an unsightly appearance will not be approved. All disposal sites must be approved by the Kansas Department of Health and Environment. Material either stockpiled or disposed of in a flood plain would require a Kansas State Board of Agriculture permit. Any material dumped in waters of the United States or wetlands is subject to U.S. Corps of Engineers permitting regulations. Any material buried or stockpiled beyond approved construction limits would require additional archaeological investigations unless buried in a previously approved borrow location.
- Trees and shrubs in public right-of-way which are in direct conflict with proposed new construction shall be removed by the Contractor with the Engineer's approval. Trees and shrubs which are not in direct conflict with proposed new construction shall be saved and protected from damage.
- The Contractor shall give all property owners and/or tenants of developed property abutting the construction of this project a minimum of ten (10) days advance notice prior to start of construction.
- The Contractor shall be responsible for preserving property irons. The Contractor will be required to re-establish any property irons which are damaged or destroyed by his construction operations. Such irons shall be re-established by a licensed land surveyor in accordance with state laws.
- The Contractor shall be responsible for maintaining continuous flow of sewage through construction. Contractor's proposed method for maintaining sewage flow shall be approved by the Engineer. Cost of maintaining flow of sewage through construction will not be paid for directly and this cost shall be considered as subsidiary to the other pay items of work.
- All existing and proposed erosion control measures including silt fencing, erosion control mat, straw bales, inlet barriers, and const. entrance shall be maintained throughout construction by the contractor and until project is accepted by the City of Wichita. The on-site engineer shall complete weekly reports on the status of erosion control measures. The contractor shall be required to comply with maintenance and/or replacement of erosion control measures as determined by the on-site engineer until project is accepted by City of Wichita. Maintenance and/or replacement of erosion control measures to be paid by L.S. bid item "Site Clearing and Restoration."
- All areas disturbed during construction shall be seeded at 300 lbs./acre with Rye Grass immediately following construction in that area. Contractor shall prepare ground per City Specifications. Cost shall be paid by bid item "Project Seeding."
- Contractor shall be required to backfill front loaded sanitary sewer trenches (Lots 1-5, 7 Blk. A; Lots 1-3, Blk. E and Lots 6-16, Block C) with sand, water-jetted and vibrated. Cost to be bid per L.F. as "Sand Backfill Jetted and Vibrated."
- The developer for this project is Jay W. Russell, and may be contacted at (316)722-2417.
- Contractor shall grade around exposed manholes at a 1:1 slope. Manholes set lower than existing grade shall have a 9" berm constructed around manhole to prevent infiltration into sanitary sewer system. Cost of dirt, labor, equipment, etc. to be incidental to cost of manhole. Easements shall be graded with the street improvement project as part of the mass grading plan.
- All Risers shall be constructed using Method "B."

Sheet Index

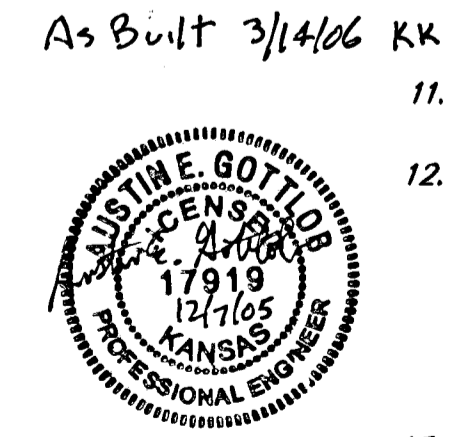
Title Sheet	1
Lines 1, 1A & 4	2
Line 2	3
Line 2A	4
Line 3	5
Standard Manhole Detail	6
Shallow Manhole Detail	7
Ring & Cover Detail	8
Vertical Riser Detail	9
8" Cleanout Riser Detail	10
Erosion Control Plan	11
Erosion Control Details	12-15
Coordinate Information	16
Copy of Plat	17

Benchmarks

"□" Cut on Top of Curb at West Line of Lot 7, Block A, Auburn Hills 5th Addition.
Elevation = 207.73 (City Datum)

Disc in Back of Curb, North of Front Corner Common to Lots 23 and 24, Block D, Auburn Hills 12th Addition.
Elevation = 191.84 (City Datum)

"□" Cut on Center of Catch Basin North of Lot Corner Common to Lots 1 and 15, Block B, Auburn Hills 14th Addition.
Elevation = 193.65 (City Datum)



Baughman Company, P.A. 315 Ellis St. Wichita, KS 67211 P 316-262-7271 F 316-262-0149
ENGINEERING | SURVEYING | PLANNING | LANDSCAPE ARCHITECTURE