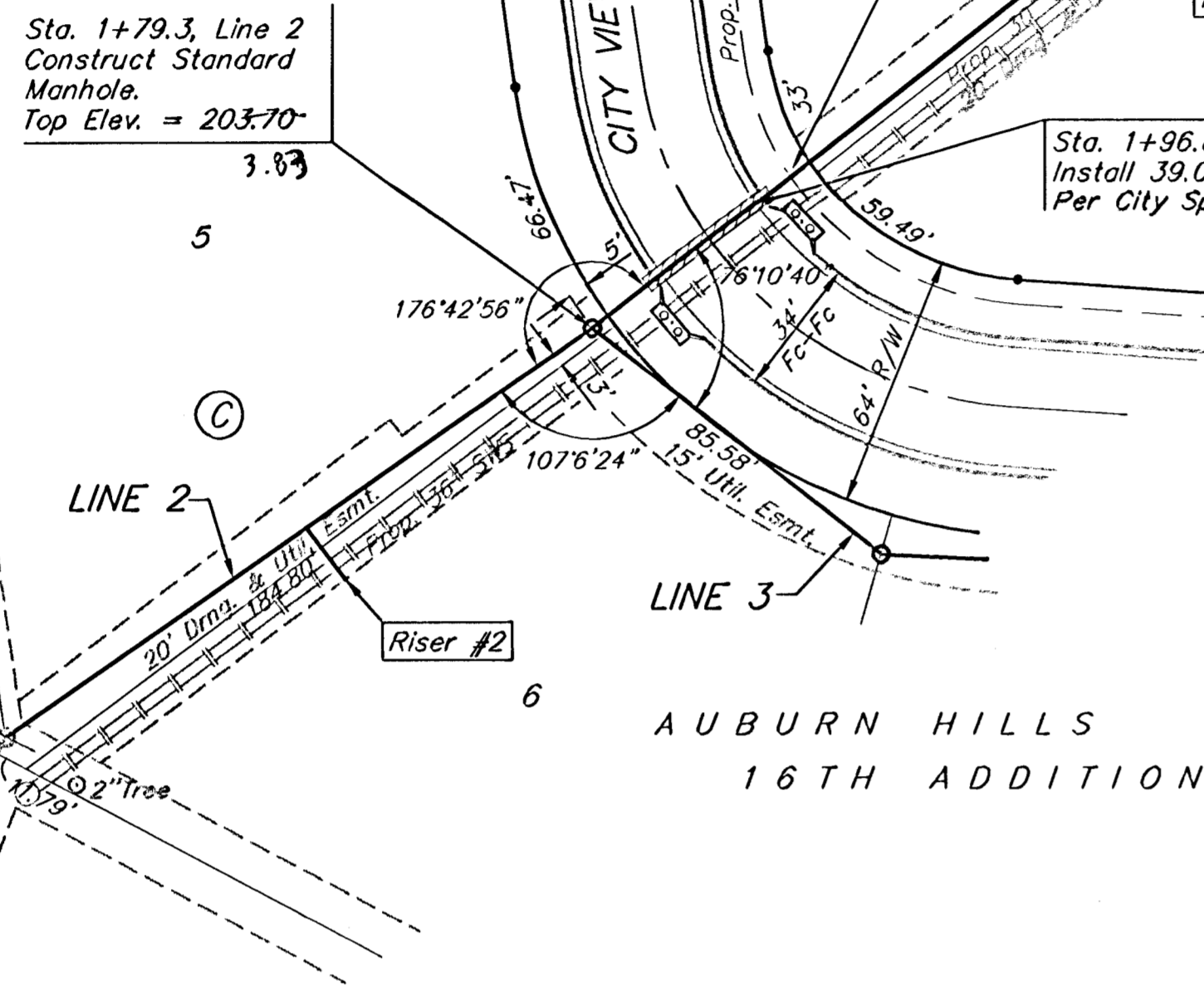
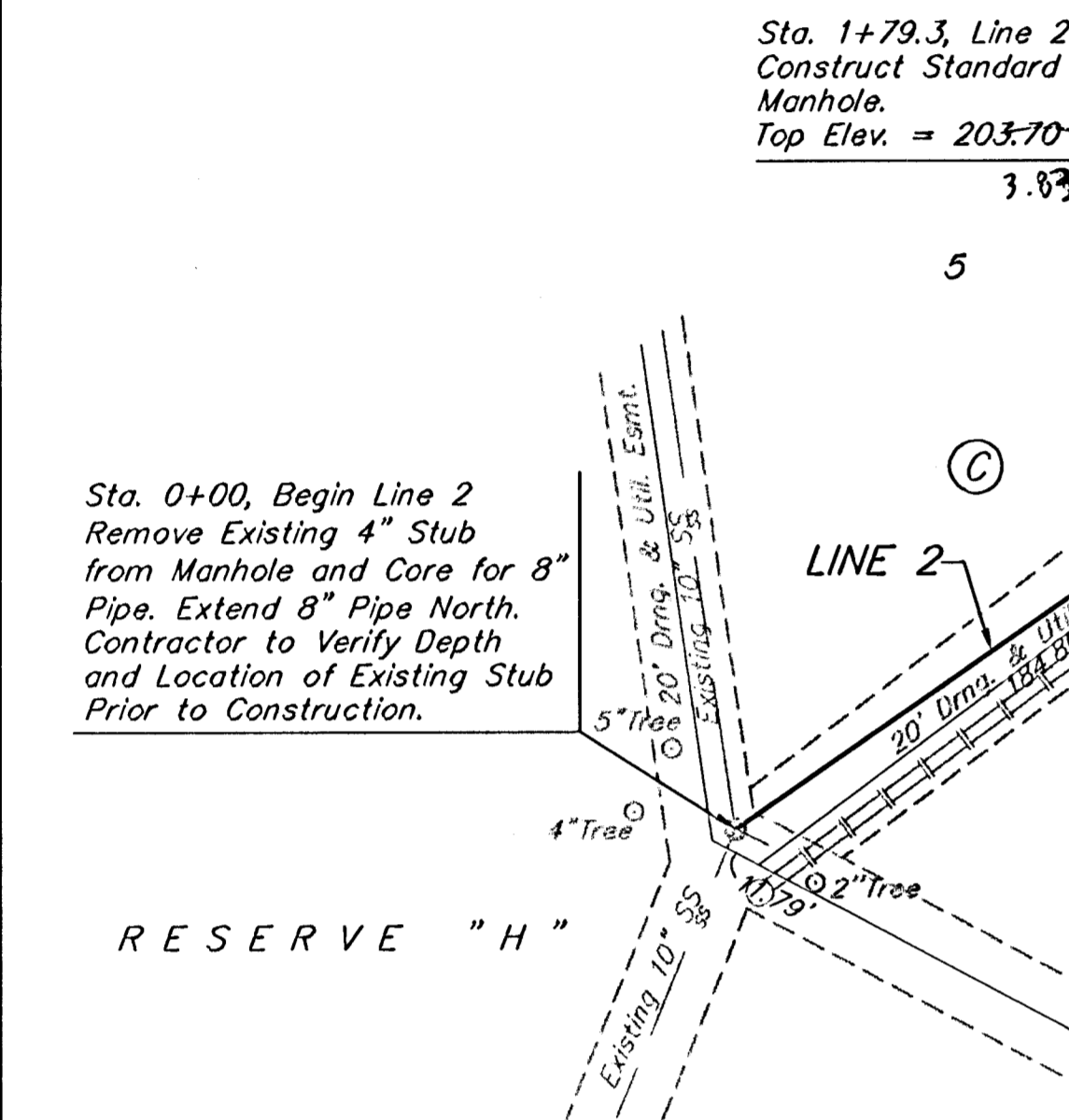


Benchmarks:

"C" Cut on Top of Curb at West Line of Lot 7, Block A, Auburn Hills 5th Addition.
Elevation = 207.73 (City Datum)

Disc in Back of Curb, North of Front Corner Common to Lots 23 and 24, Block D, Auburn Hills 12th Addition.
Elevation = 191.84 (City Datum)

"C" Cut on Center of Catch Basin North of Lot Corner Common to Lots 1 and 15, Block B, Auburn Hills 14th Addition.
Elevation = 193.65 (City Datum)

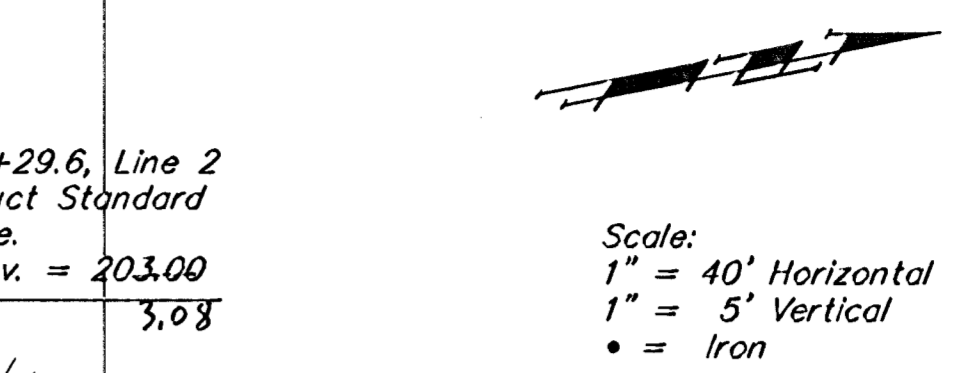


SEWER SERVICE TABLE

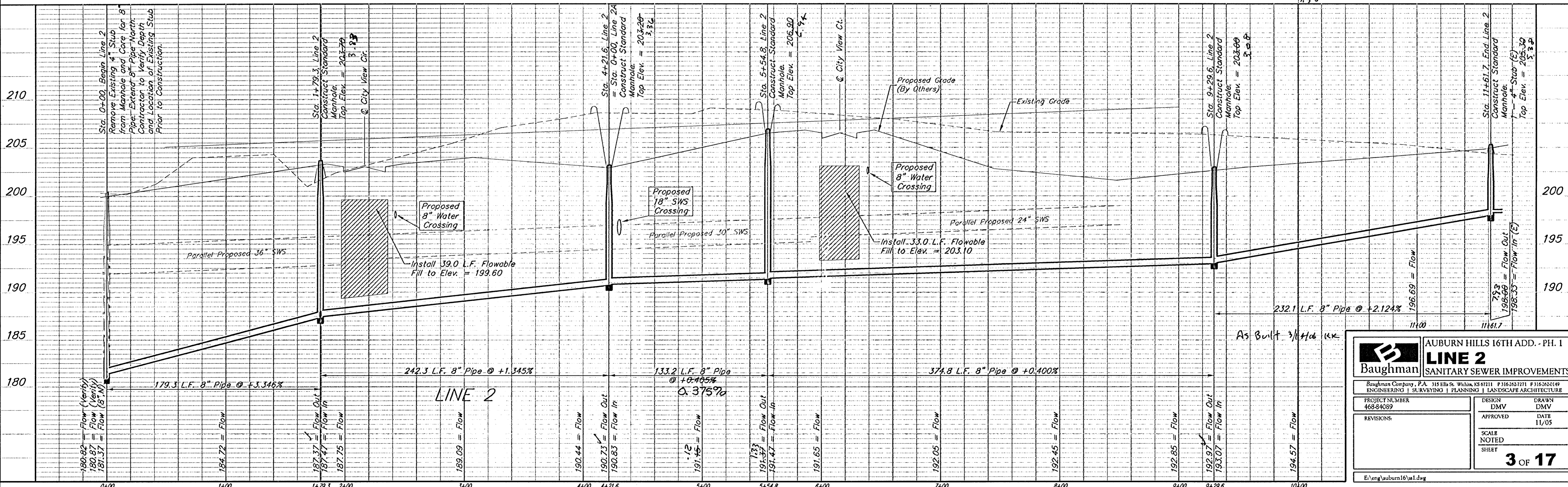
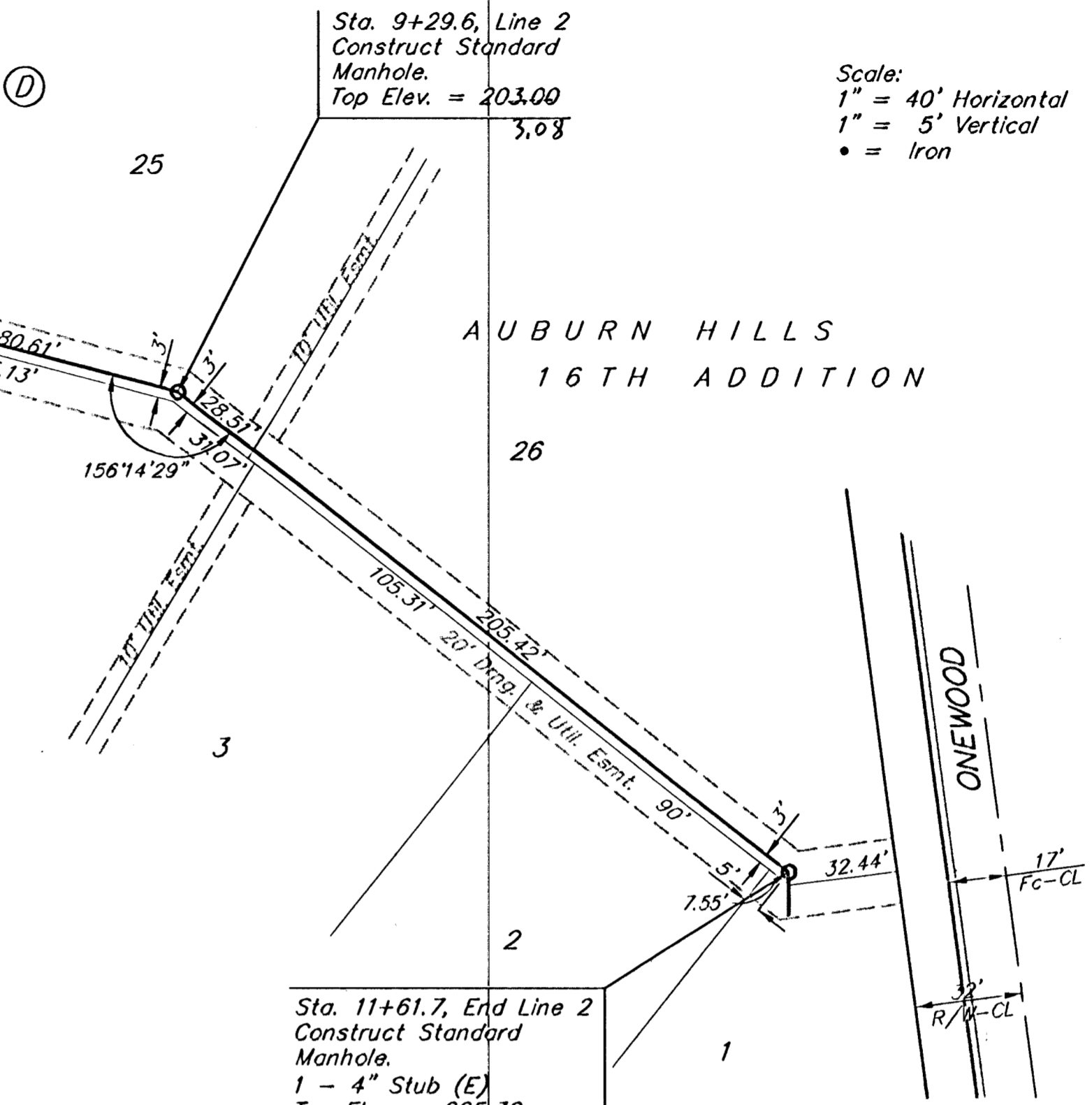
NUMBER	TYPE	LOCATION			FOR INFORMATION ONLY		
		LOT NO.	BLOCK NO.	LINE NO.	STATION DIRECTION	APPROXIMATE LENGTH 4" PIPE	
					VERTICAL	HORIZONTAL	
2	8" x 4" Tee Saddle	6	C	2	0+92/Rt.	13.5'	16'
3	8" x 4" Tee Saddle	15	D	2	3+42/Lt.	10'	6.5'
4	8" x 4" Tee Saddle	14	D	2	3+67/Rt.	9.5'	13.5'
5	8" x 4" Tee Saddle	13	D	2	4+94/Rt.	10'	7'
6	8" x 4" Tee Saddle	12	D	2	5+07/Lt.	10.5'	13'
7	8" x 4" Tee Saddle	6	D	2	6+55/Rt.	10.5'	13'
8	8" x 4" Tee Saddle	7	D	2	7+38/Lt.	7'	7'
9	8" x 4" Tee Saddle	5	D	2	7+92/Rt.	6'	13'

NOTE: Vertical Riser Pipes shall be extended to 2' minimum above ground water elevation and 4' maximum below proposed ground elevation.

**AUBURN HILLS
16TH ADDITION**



**AUBURN HILLS
16TH ADDITION**



B
Baughman

AUBURN HILLS 16TH ADD. - PH. 1
LINE 2
SANITARY SEWER IMPROVEMENTS

Baughman Company, P.A. 315 Ellis St. Wichita, KS 67211 P 316-262-3771 F 316-262-0149
ENGINEERING | SURVEYING | PLANNING | LANDSCAPE ARCHITECTURE

PROJECT NUMBER 468-84089	DESIGN DMV	DRAWN DMV
REVISIONS:	APPROVED	DATE 11/05
SCALE NOTED		SHEET
		3 OF 17

E:\eng\auburn16\al.dwg