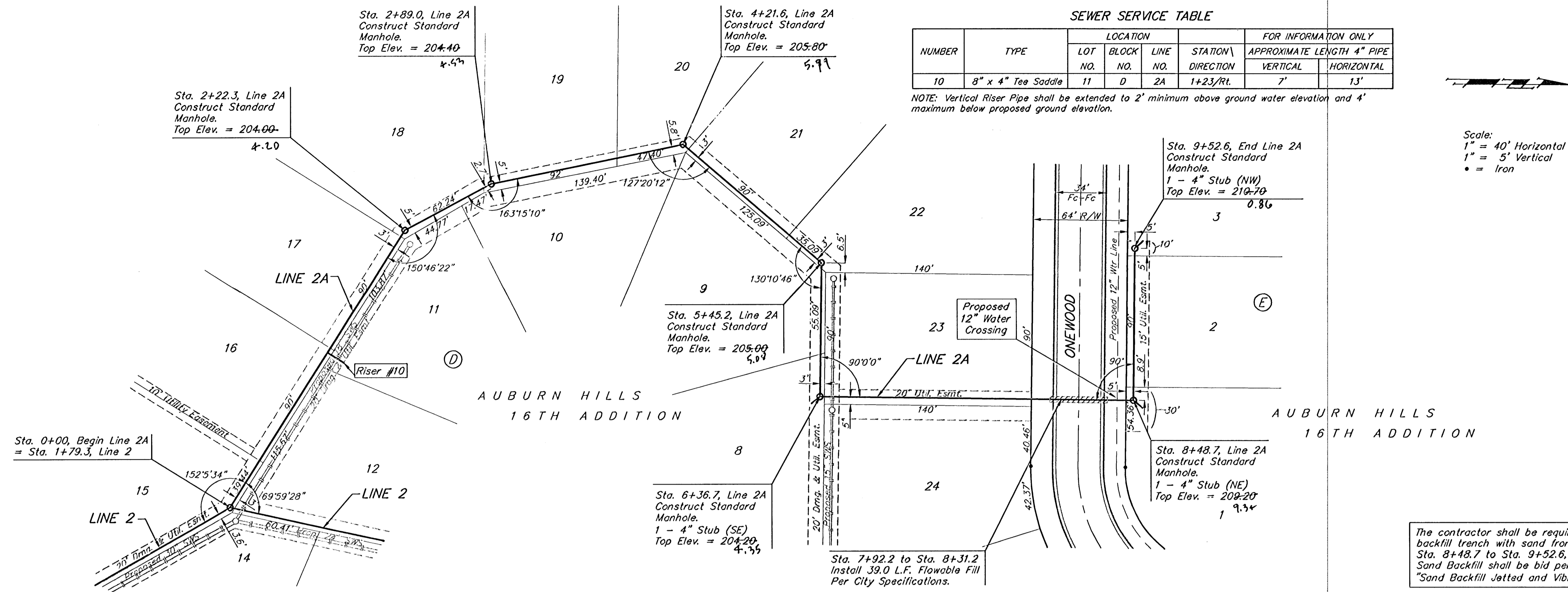


Benchmarks:

"□" Cut on Top of Curb at West Line of Lot 7, Block A, Auburn Hills 5th Addition.
Elevation = 207.73 (City Datum)

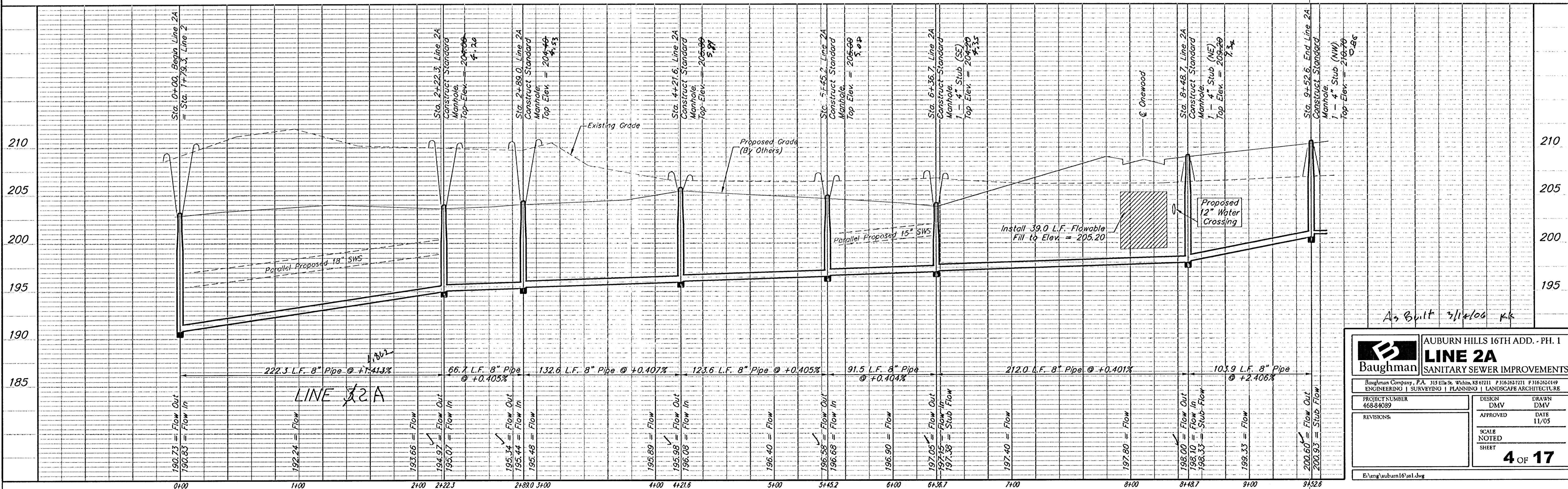
Disc in Back of Curb, North of Front Corner Common to Lots 23 and 24, Block D, Auburn Hills 12th Addition.
Elevation = 191.84 (City Datum)

"□" Cut on Center of Catch Basin North of Lot Corner Common to Lots 1 and 15, Block B, Auburn Hills 14th Addition.
Elevation = 193.65 (City Datum)



Scale:
1" = 40' Horizontal
1" = 5' Vertical
• = Iron

The contractor shall be required to backfill trench with sand from Sta. 8+48.7 to Sta. 9+52.6, Line 2A. Sand Backfill shall be bid per L.F. as "Sand Backfill Jetted and Vibrated".



Baughman AUBURN HILLS 16TH ADD. - PH. I
LINE 2A
SANITARY SEWER IMPROVEMENTS

Baughman Company, P.A. 315 Ellis St. Wichita, KS 67211 P316242-7211 P316242-0149
ENGINEERING | SURVEYING | PLANNING | LANDSCAPE ARCHITECTURE

PROJECT NUMBER 468-84089	DESIGN DMV	DRAWN DMV
REVISIONS:	APPROVED	DATE 11/05
SCALE NOTED SHEET		4 OF 17

El:\eng\auburn16\ss1.dwg