

**Benchmarks:**

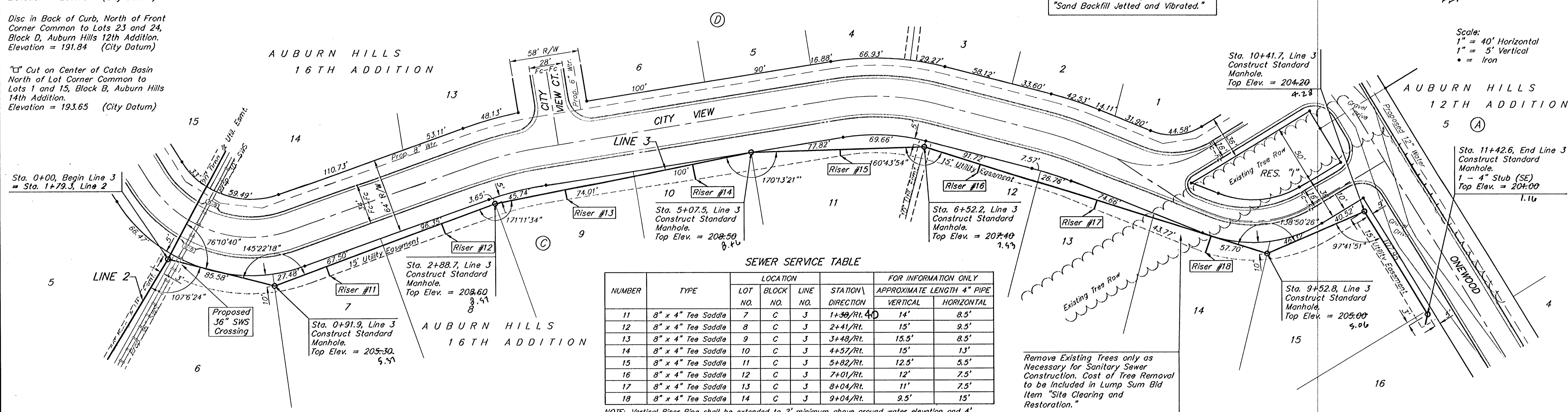
"C" Cut on Top of Curb at West Line of Lot 7, Block A, Auburn Hills 5th Addition.  
Elevation = 207.73 (City Datum)

Disc in Back of Curb, North of Front Corner Common to Lots 23 and 24, Block D, Auburn Hills 12th Addition.  
Elevation = 191.84 (City Datum)

"C" Cut on Center of Catch Basin North of Lot Corner Common to Lots 1 and 15, Block B, Auburn Hills 14th Addition.  
Elevation = 193.65 (City Datum)

The contractor shall be required to backfill trench with sand from Sta. 0+00 to Sta. 11+42.6, Line 3 Sand Backfill shall be bid per L.F. as "Sand Backfill Jetted and Vibrated."

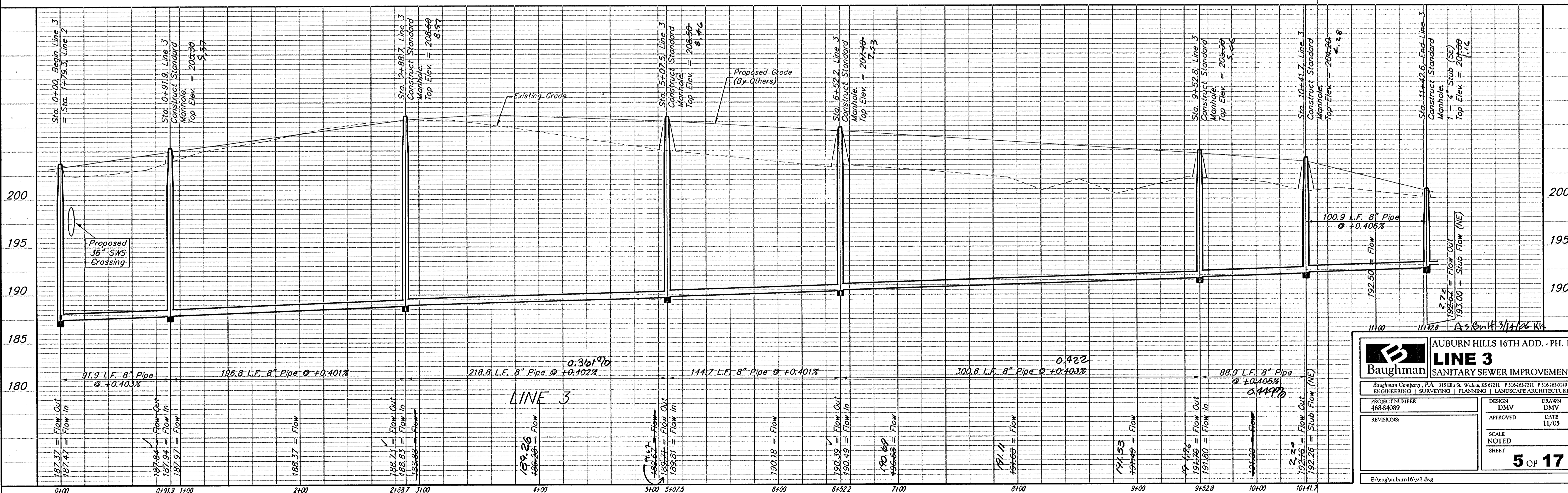
Scale:  
1" = 40' Horizontal  
1" = 5' Vertical  
• = Iron



**SEWER SERVICE TABLE**

NUMBER	TYPE	LOCATION			FOR INFORMATION ONLY	
		LOT NO.	BLOCK NO.	LINE NO.	APPROXIMATE LENGTH 4" PIPE	
11	8" x 4" Tee Saddle	7	C	3	1+39/Rt. 4.0	14' 8.5'
12	8" x 4" Tee Saddle	8	C	3	2+41/Rt.	15' 9.5'
13	8" x 4" Tee Saddle	9	C	3	3+48/Rt.	15.5' 8.5'
14	8" x 4" Tee Saddle	10	C	3	4+57/Rt.	15' 13'
15	8" x 4" Tee Saddle	11	C	3	5+82/Rt.	12.5' 5.5'
16	8" x 4" Tee Saddle	12	C	3	7+01/Rt.	12' 7.5'
17	8" x 4" Tee Saddle	13	C	3	8+04/Rt.	11' 7.5'
18	8" x 4" Tee Saddle	14	C	3	9+04/Rt.	9.5' 15'

NOTE: Vertical Riser Pipe shall be extended to 2' minimum above ground water elevation and 4' maximum below proposed ground elevation.



**AUBURN HILLS 16TH ADD. - PH. 1**

**LINE 3**  
SANITARY SEWER IMPROVEMENTS

Baughman  
ENGINEERING | SURVEYING | PLANNING | LANDSCAPE ARCHITECTURE

PROJECT NUMBER 468-84089	DESIGN DMV	DATE 11/05
APPROVED	DATE	
REVISIONS:	SCALE NOTED	SHEET

**5 OF 17**

E:\eng\auburn16\1.dwg