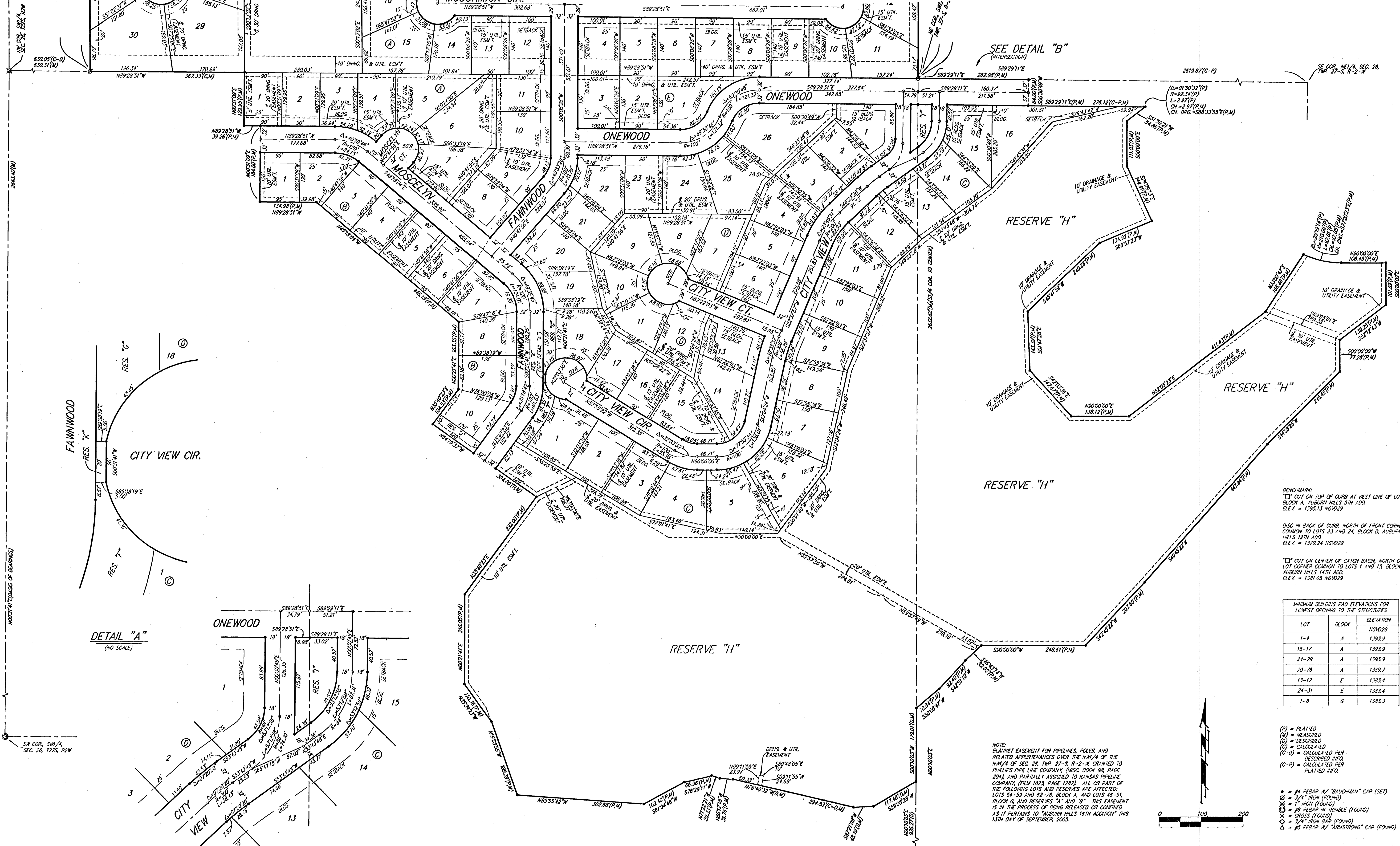


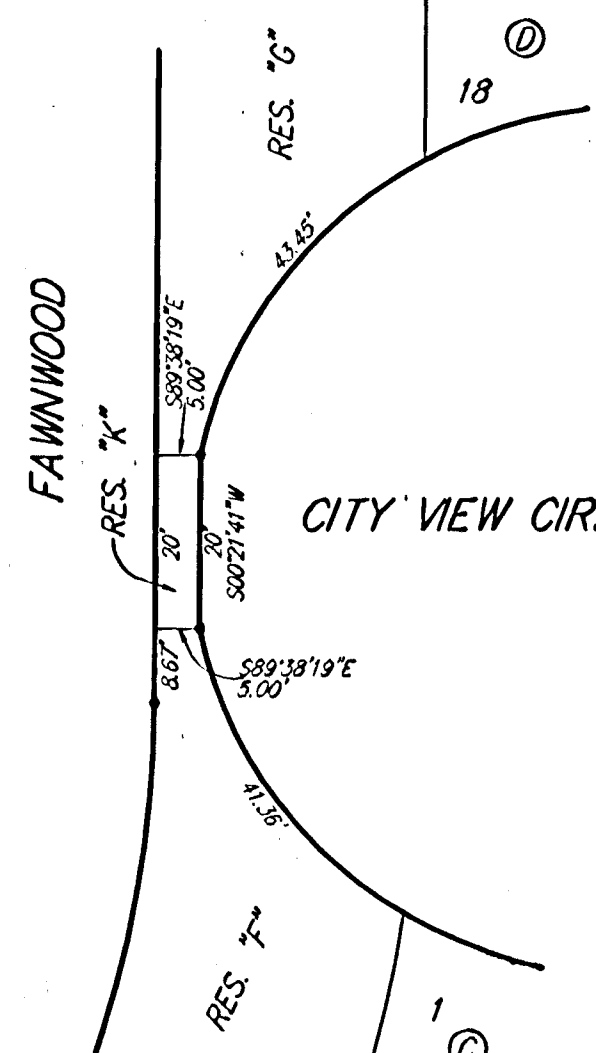
AUBURN HILLS 16TH ADDITION

WICHITA, SEDGWICK COUNTY, KANSAS

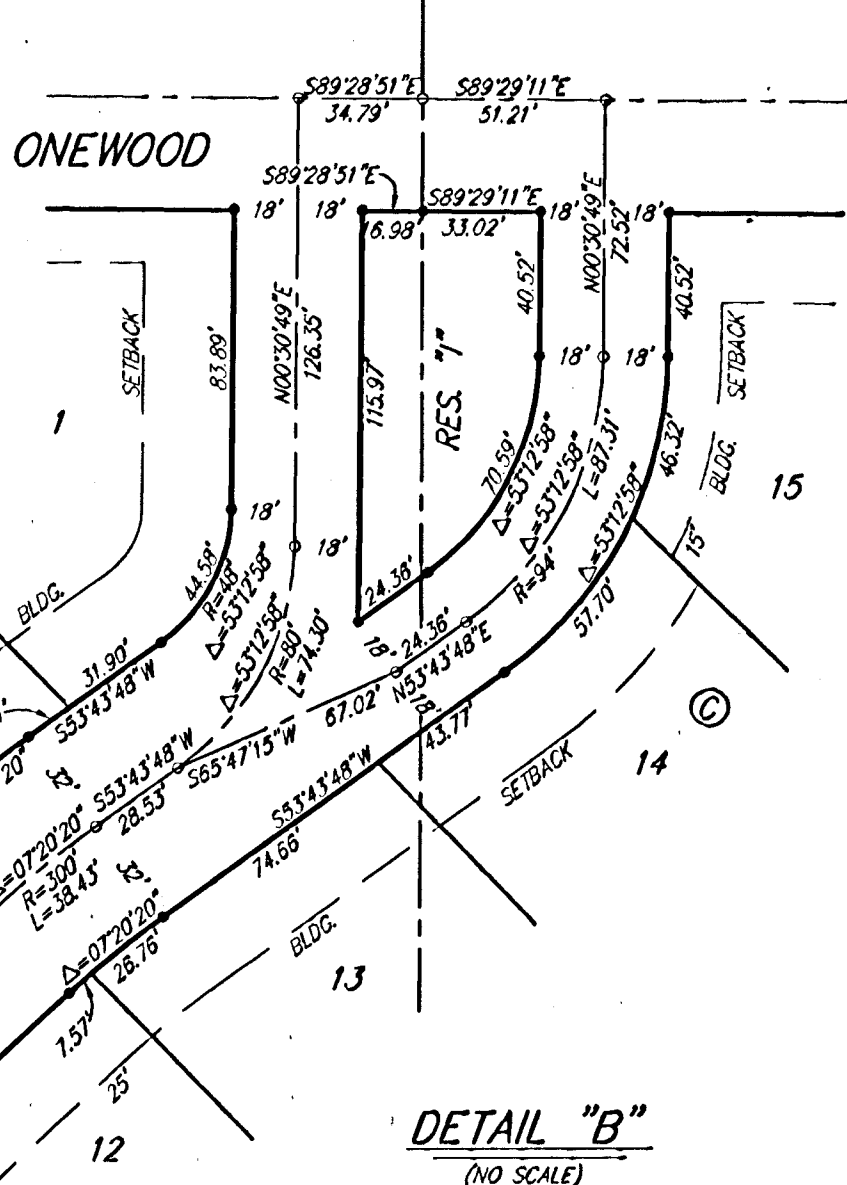


SEE DETAIL "B"
(INTERSECTION)

SE COR. NE 1/4, SEC. 26, TWP. 27-S, R-2-W



DETAIL "A"
(NO SCALE)



DETAIL "B"
(NO SCALE)

BENCHMARK:
 [] CUT ON TOP OF CURB AT WEST LINE OF LOT 7, BLOCK A, AUBURN HILLS 5TH ADD. ELEV. = 1393.13 NGVD29
 DISC IN BACK OF CURB, NORTH OF FRONT CORNER COMMON TO LOTS 23 AND 24, BLOCK D, AUBURN HILLS 12TH ADD. ELEV. = 1379.24 NGVD29
 [] CUT ON CENTER OF CATCH BASIN, NORTH OF LOT CORNER COMMON TO LOTS 1 AND 15, BLOCK B, AUBURN HILLS 14TH ADD. ELEV. = 1381.05 NGVD29

LOT	BLOCK	ELEVATION
1-4	A	1393.9
15-17	A	1393.9
24-29	A	1393.9
70-75	A	1393.7
13-17	E	1383.4
24-31	E	1383.4
1-8	G	1383.3

NOTE:
 BLANKET EASEMENT FOR PIPELINES, POLES, AND RELATED APPURTENANCES OVER THE NW 1/4 OF THE NW 1/4 OF SEC. 26, TWP. 27-S, R-2-W, GRANTED TO PHILLIPS PIPE LINE COMPANY, (MISC. BOOK 98, PAGE 204), AND PARTIALLY ASSIGNED TO KANSAS PIPELINE COMPANY, (NEW 1928, PAGE 1083). ALL OR PART OF THE FOLLOWING LOTS AND RESERVES ARE AFFECTED: LOTS 54-59 AND 82-78, BLOCK A, AND LOTS 16-51, BLOCK G, AND RESERVES "A" AND "D". THIS EASEMENT IS IN THE PROCESS OF BEING RELEASED OR CONFIRMED AS IT PERTAINS TO "AUBURN HILLS 16TH ADDITION" THIS 13TH DAY OF SEPTEMBER, 2008.

- (P) = PLATTED
 - (M) = MEASURED
 - (D) = DESCRIBED
 - (C) = CALCULATED
 - (C-D) = CALCULATED PER DESCRIBED INFO.
 - (C-P) = CALCULATED PER PLATTED INFO.
- = #4 REBAR W/ "BAUGHMAN" CAP (SET)
 - = 1/4" IRON (FOUND)
 - ⊗ = 1" IRON (FOUND)
 - ⊙ = #6 REBAR W/ TRIMBLE (FOUND)
 - ⊕ = CROSS (FOUND)
 - △ = 1/4" IRON BAR (FOUND)
 - ◇ = #5 REBAR W/ "ARISTONING" CAP (FOUND)

THE PLAT HEREON IS A PART OF THE 22 27S 26W 11 12S 11W 27S
 19048-533