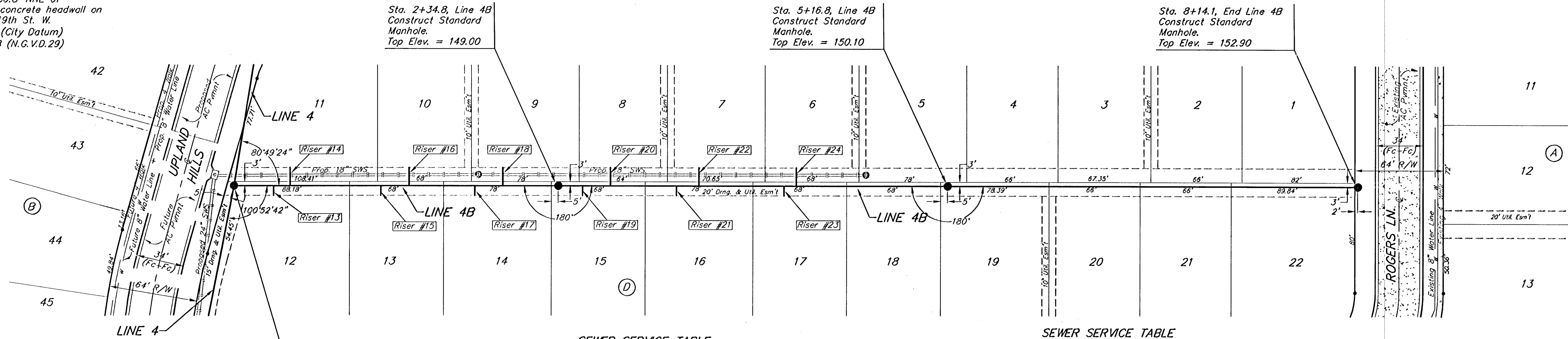


**BENCHMARK**  
 119th St. W. & Pawnee  
 City of Wichita Benchmark Disc.  
 NE corner of intersection. 40' E  
 and 30' N of centerline. 59.5' N of  
 power pole @ SE corner of  
 intersection. 156.8' NNE of  
 centerline of E concrete headwall on  
 culvert under 119th St. W.  
 Elev. = 148.68 (City Datum)  
 Elev. = 1336.08 (N.G.V.D.29)

TURKEY CREEK 2ND ADDITION

SCALE:  
 1" = 40' HORIZONTAL  
 1" = 5' VERTICAL  
 • = IRON



TURKEY CREEK 2ND ADDITION

Sta. 0+00, Begin Line 4B  
 = Sta. 5+82.7, Line 4

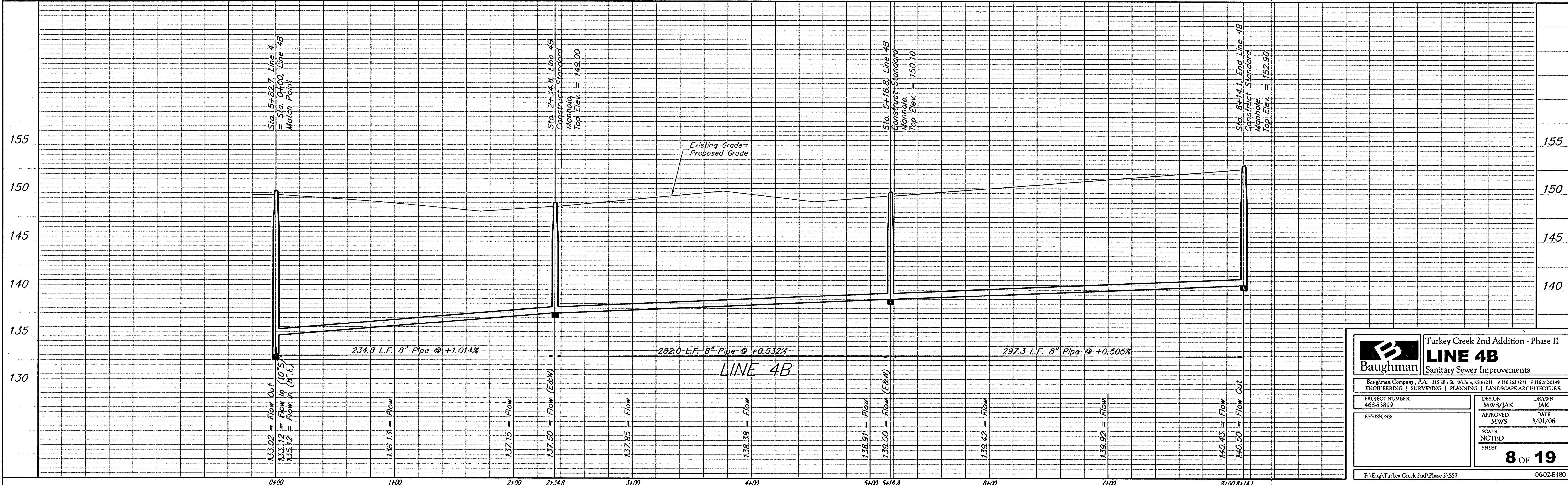
SEWER SERVICE TABLE

NUMBER	TYPE	LOCATION			FOR INFORMATION ONLY	
		LOT NO.	BLOCK NO.	LINE NO.	STATION/DIRECTION	APPROXIMATE LENGTH 4" PIPE VERTICAL HORIZONTAL
13	8" X 4" Tee Saddle	12	E	4B	0+29/Rt.	8.5' 7'
14	8" X 4" Tee Saddle	11	E	4B	0+40/Lt.	8.5' 13'
15	8" X 4" Tee Saddle	13	E	4B	1+06/Rt.	7.5' 7'
16	8" X 4" Tee Saddle	10	E	4B	1+26/Lt.	7.5' 13'
17	8" X 4" Tee Saddle	14	E	4B	1+74/Rt.	6.5' 7'

NOTE: Vertical Riser Pipe shall be extended to 2' minimum above ground water elevation and 4' maximum below proposed ground elevation.

SEWER SERVICE TABLE

NUMBER	TYPE	LOCATION			FOR INFORMATION ONLY	
		LOT NO.	BLOCK NO.	LINE NO.	STATION/DIRECTION	APPROXIMATE LENGTH 4" PIPE VERTICAL HORIZONTAL
18	8" X 4" Tee Saddle	9	E	4B	1+34/Lt.	6.5' 13'
19	8" X 4" Tee Saddle	15	E	4B	2+52/Rt.	7' 7'
20	8" X 4" Tee Saddle	8	E	4B	2+72/Lt.	7' 13'
21	8" X 4" Tee Saddle	16	E	4B	3+20/Rt.	7.5' 7'
22	8" X 4" Tee Saddle	7	E	4B	3+36/Lt.	7.5' 13'
23	8" X 4" Tee Saddle	17	E	4B	3+97/Rt.	7.5' 7'
24	8" X 4" Tee Saddle	6	E	4B	4+07/Lt.	7' 13'



**Baughman** Turkey Creek 2nd Addition - Phase II  
**LINE 4B**  
 Sanitary Sewer Improvements

PROJECT NUMBER: 468-83819  
 DESIGN: MWS/JAK  
 DRAWN: JAK  
 APPROVED: MWS  
 DATE: 3/01/06  
 SCALE: NOTED  
 SHEET: 8 OF 19

F:\Eng\Turkey Creek 2nd\Phase 2\SS7 06-02-E480