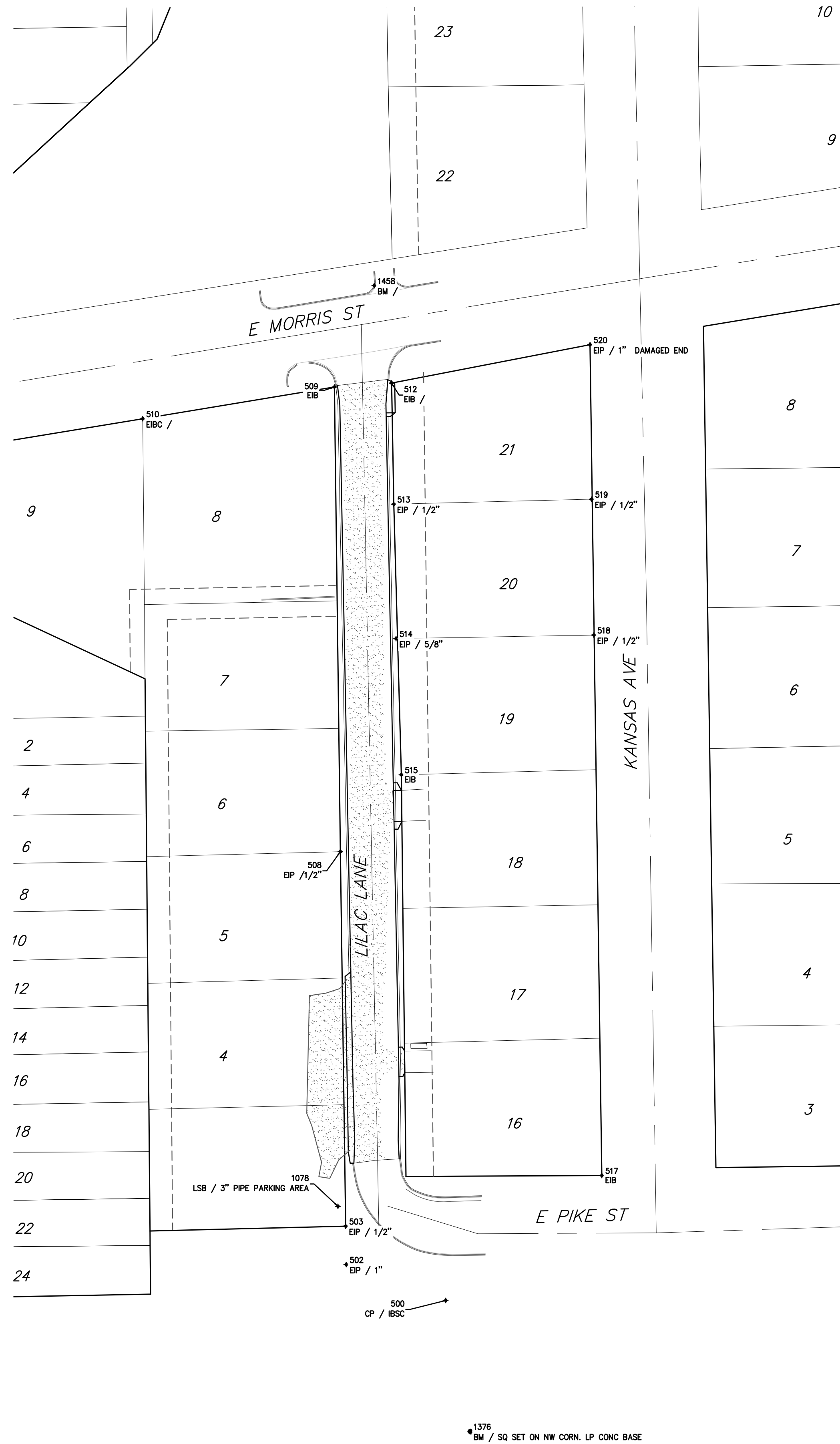
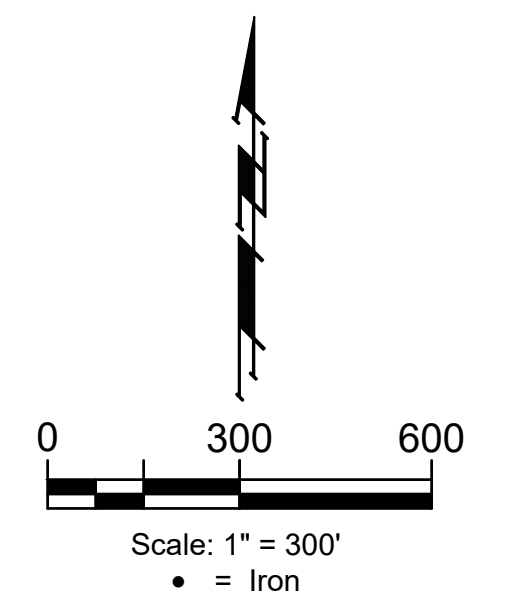


BENCHMARK #1
 Square cut set in NW corner
 of conc. light pole base.
 Approx. 100' south and 30' East of the
 intersection of Lilac & Pike St
 Elev. = 1296.61 (NAVD88, GEOD18)

BENCHMARK #2
 Square cut set in top curb
 West curb return, north end of drive
 Approx. 20' north and 7' East of the
 intersection of Lilac & Morris St
 Elev. = 1291.63 (NAVD88, GEOD18)



Point #	Northing	Easting	Description
500	1,680,601.38	1,654,963.79	CP / IBSC
502	1,680,620.05	1,654,912.01	EIP / 1"
503	1,680,640.03	1,654,911.75	EIP / 1/2"
508	1,680,834.85	1,654,908.96	EIP / 1/2"
509	1,681,076.61	1,654,905.86	EIB
510	1,681,060.09	1,654,806.13	EIBC /
511	1,681,039.31	1,654,679.68	EIB /
512	1,681,078.65	1,654,935.63	EIB /
513	1,681,015.64	1,654,936.76	EIP / 1/2"
514	1,680,945.70	1,654,937.92	EIP / 5/8"
515	1,680,874.84	1,654,940.69	EIB
517	1,680,666.40	1,655,044.99	EIB
518	1,680,947.56	1,655,040.87	EIP / 1/2"
519	1,681,018.23	1,655,039.66	EIP / 1/2"
520	1,681,098.63	1,655,038.85	EIP / 1" DAMAGED END
1078	1,680,650.35	1,654,907.70	LSB / 3" PIPE PARKING AREA
1376	1,680,533.24	1,654,976.49	BM / SQ SET ON NW CORN. LP CONC BASE
1458	1,681,129.31	1,654,926.56	BM /







**BAUGHMAN
COMPANY**

315 Ellis St.
Wichita, KS 67211
316-262-7271
BaughmanCo.com

LILAC LANE

COORDINATES

Paving Improvements

PROJECT NUMBER:
472-2023-085850

DESIGN: NBW DRAWN: JAK

DATE: Apr. 24, 2023

SHEET **12** OF **14**

File: E:\Projects\Poplar_Lilac & 10th Street 22-11-E373\Engineering\Lilac Lane\STR PLANS - Lilac.dwg