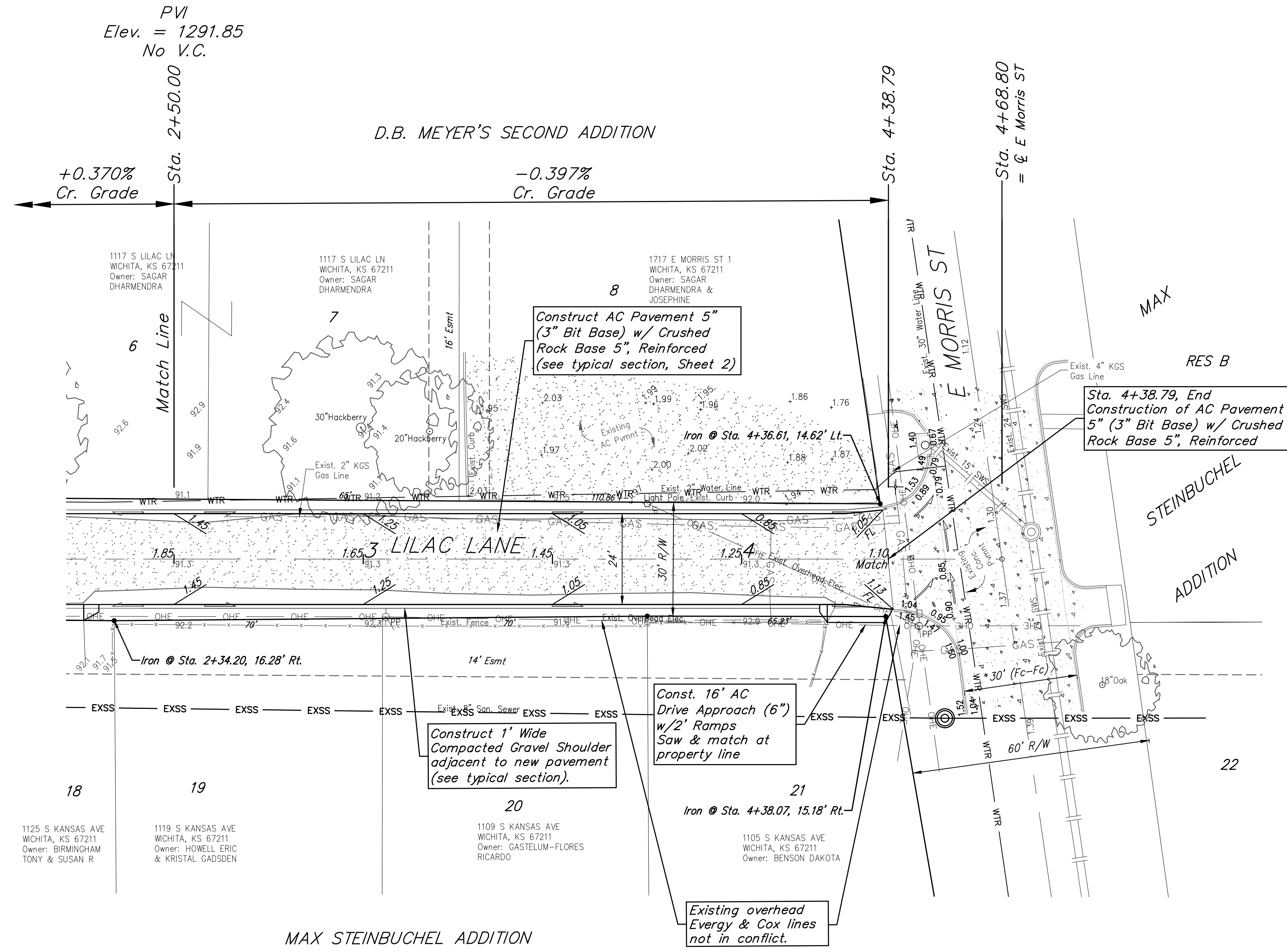
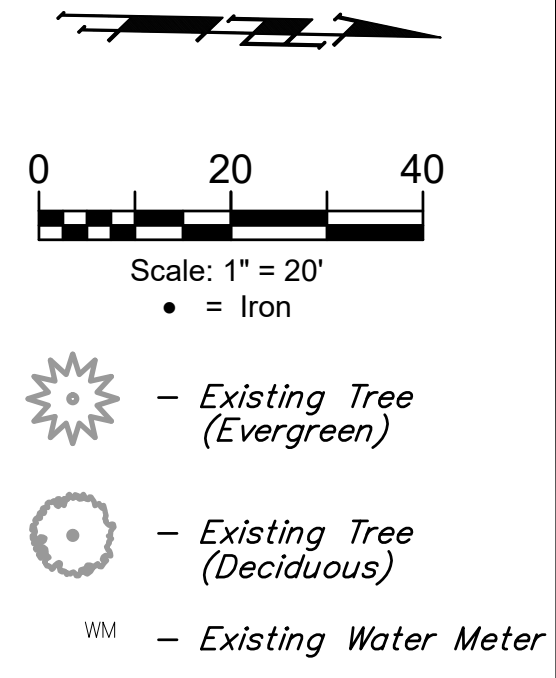


BENCHMARK #1
 Square cut set in NW corner
 of conc. light pole base.
 Approx. 100' south and 30' East of the
 intersection of Lilac & Pike St
 Elev. = 1296.61 (NAVD88, GEOD18)

BENCHMARK #2
 Square cut set in top curb
 West curb return, north end of drive
 Approx. 20' north and 7' East of the
 intersection of Lilac & Morris St
 Elev. = 1291.63 (NAVD88, GEOD18)





BAUGHMAN COMPANY

315 Ellis St.
 Wichita, KS 67211
 316-262-7271
 BaughmanCo.com

**LILAC LANE PAVING
 E PIKE ST TO MORRIS ST**

PROJECT NUMBER:

DESIGN: NBW DRAWN: JAK
 DATE: Apr. 24, 2023

SHEET **4** OF **14**

File: E:\Projects\Poplar - Lilac & 10th Street 22-11-E373\Engineering\Lilac Lane\STR PLANS - Lilac.dwg