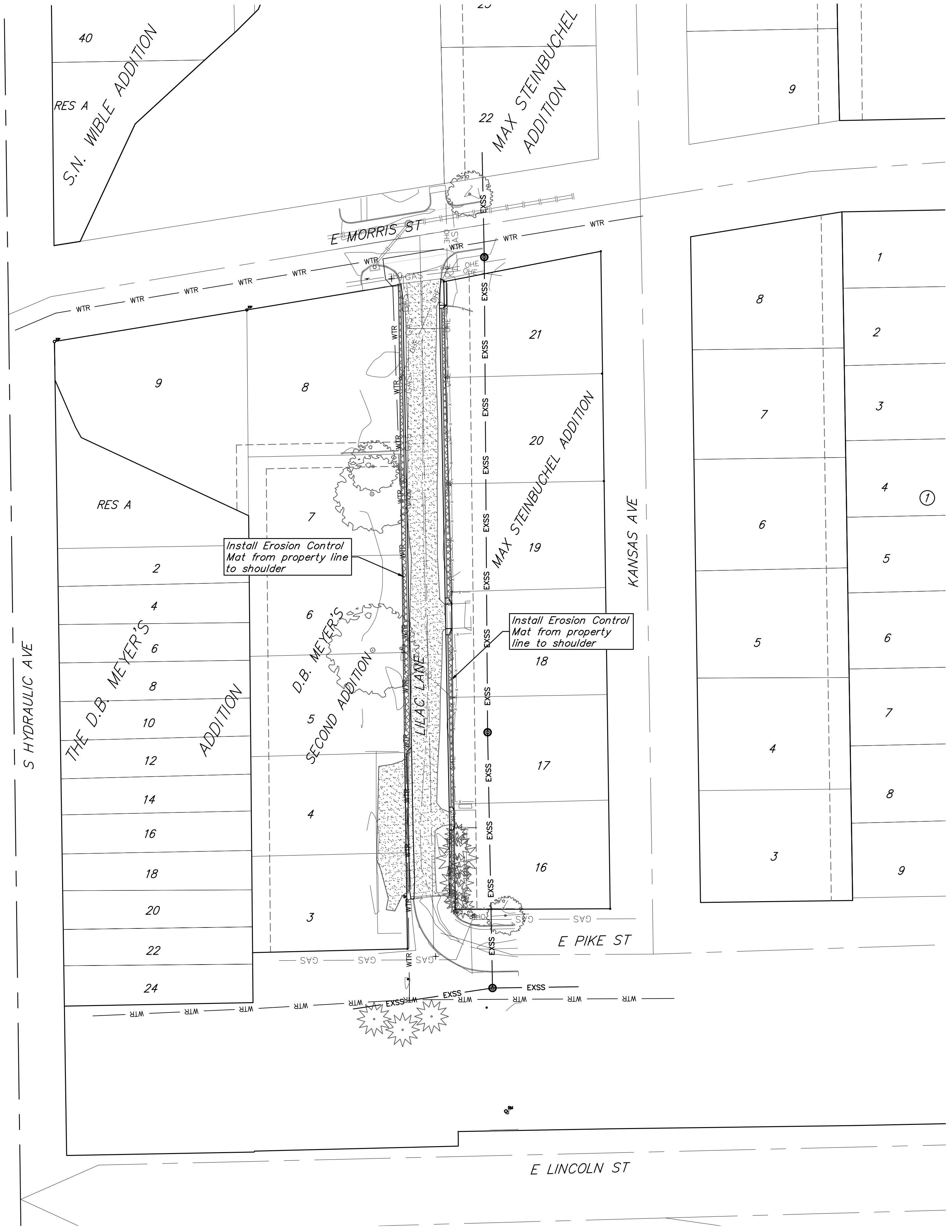


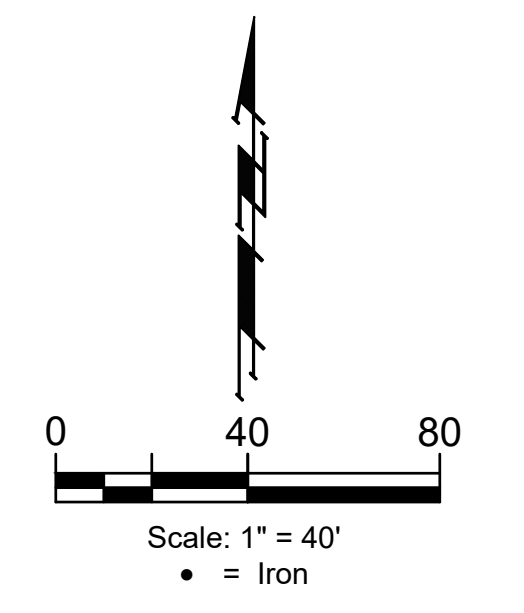
**BENCHMARK #1**  
 Square cut set in NW corner  
 of conc. light pole base.  
 Approx. 100' south and 30' East of the  
 intersection of Lilac & Pike St  
 Elev. = 1296.61 (NAVD88, GEOD18)

**BENCHMARK #2**  
 Square cut set in top curb  
 West curb return, north end of drive  
 Approx. 20' north and 7' East of the  
 intersection of Lilac & Morris St  
 Elev. = 1291.63 (NAVD88, GEOD18)



All areas disturbed during construction shall be seeded, mulched, and fertilized as per Cover Sheet General Notes.

- EROSION CONTROL MAT



Existing Ground - - - - - 1364 - - - - -





**BAUGHMAN  
 COMPANY**

315 Ellis St.  
 Wichita, KS 67211  
 316-262-7271  
 BaughmanCo.com

LILAC LANE

**EROSION  
 CONTROL**

Paving Improvements

PROJECT NUMBER:  
 472-2023-085850

DESIGN: NBW DRAWN: JAK

DATE: Apr. 24, 2023

SHEET **5** OF **14**

File: E:\Projects\Poplar - Lilac & 10th Street 22-11-E373\Engineering\Lilac Lane\STR PLANS - Lilac.dwg