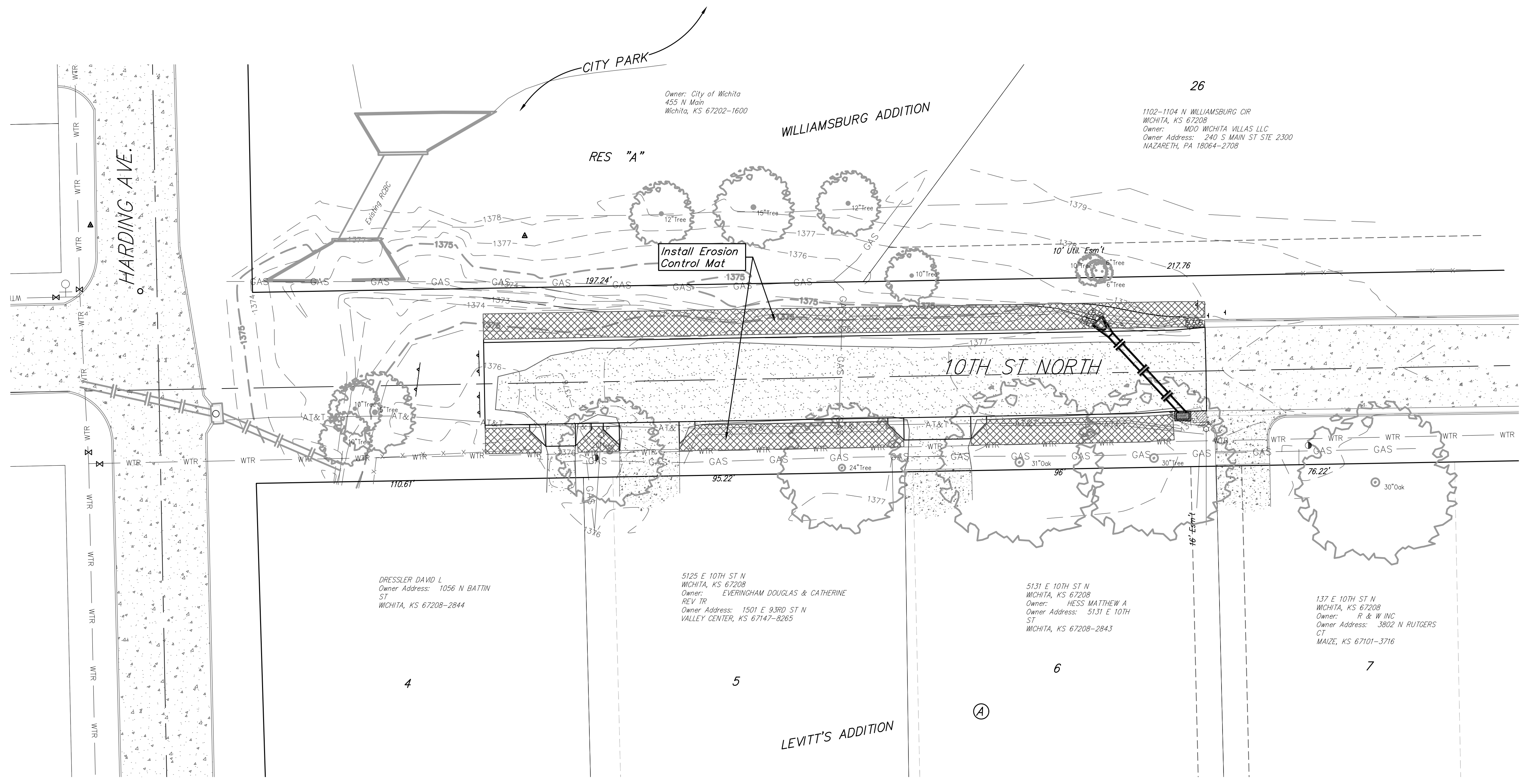
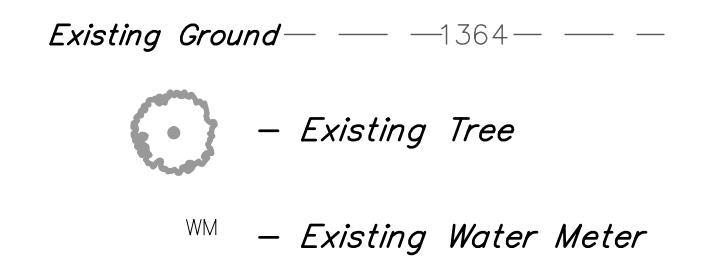
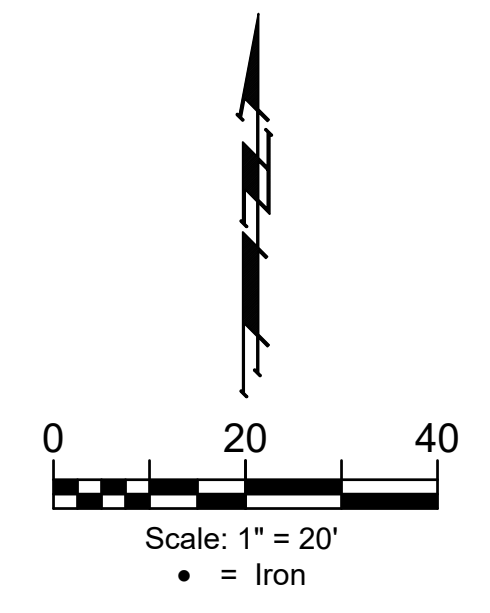


BENCHMARK #1
 Chiseled square in top center of south headwall of RCB structure located 69± E of ϕ of Harding Ave. & 34' N of ϕ of 10th ST North
 Elev. = 1377.10 (NAVD88)

BENCHMARK #2
 Square cut set in top curb. North side of 10th ST N. Approx. 256' West of the intersection of Pinecrest Ave. & 10th St N.
 Elev. = 1379.33 (NAVD88, GEOID18)

All areas disturbed during construction shall be seeded, mulched, and fertilized as per Cover Sheet General Notes.

 - EROSION CONTROL MAT




BAUGHMAN COMPANY
 315 Ellis St.
 Wichita, KS 67211
 316-262-7271
 BaughmanCo.com

10th Street North

EROSION CONTROL

Paving Improvements

PROJECT NUMBER:
472-2023-085851

DESIGN: NBW DRAWN: JAK

DATE: Apr. 24, 2023

SHEET **6** OF **13**

File: E:\Projects\Poplar_Lilac & 10th Street\22-11-E373\Engineering\10th Street NISTR PLANS - 10th St.dwg