

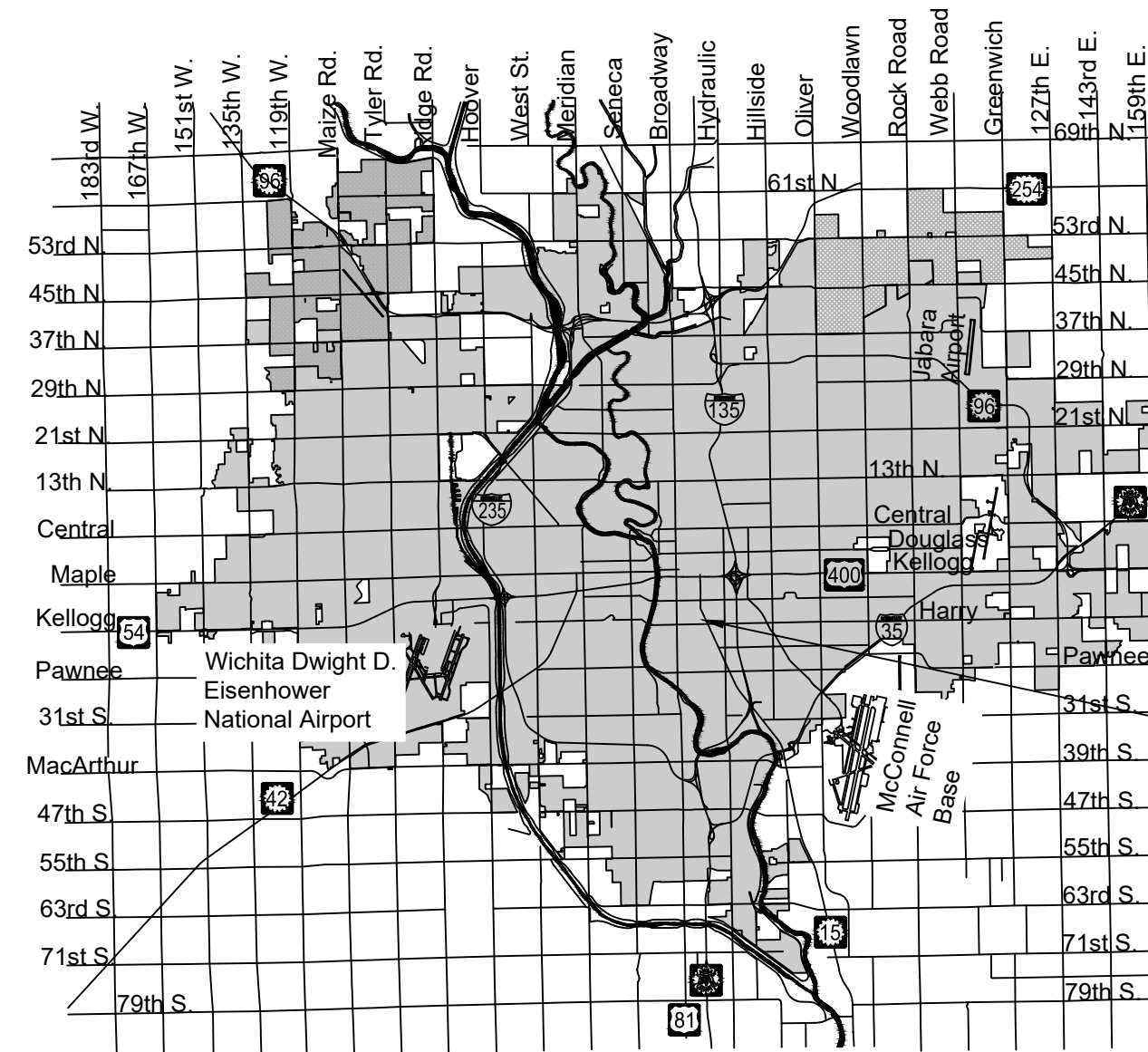
PAVING IMPROVEMENTS

to serve

FUNSTON ST, PATTIE AVE, AND SKINNER ST

CITY OF WICHITA, KANSAS

Paul Gunzelman, P.E. Interim City Engineer
 Project Number (Funston): 472-2023-085852
 Project Number (Skinner): 472-2023-085853
 Project Number (Pattie): 472-2023-085854
 Org Code Number: 40107823
 Munis Number: E2094



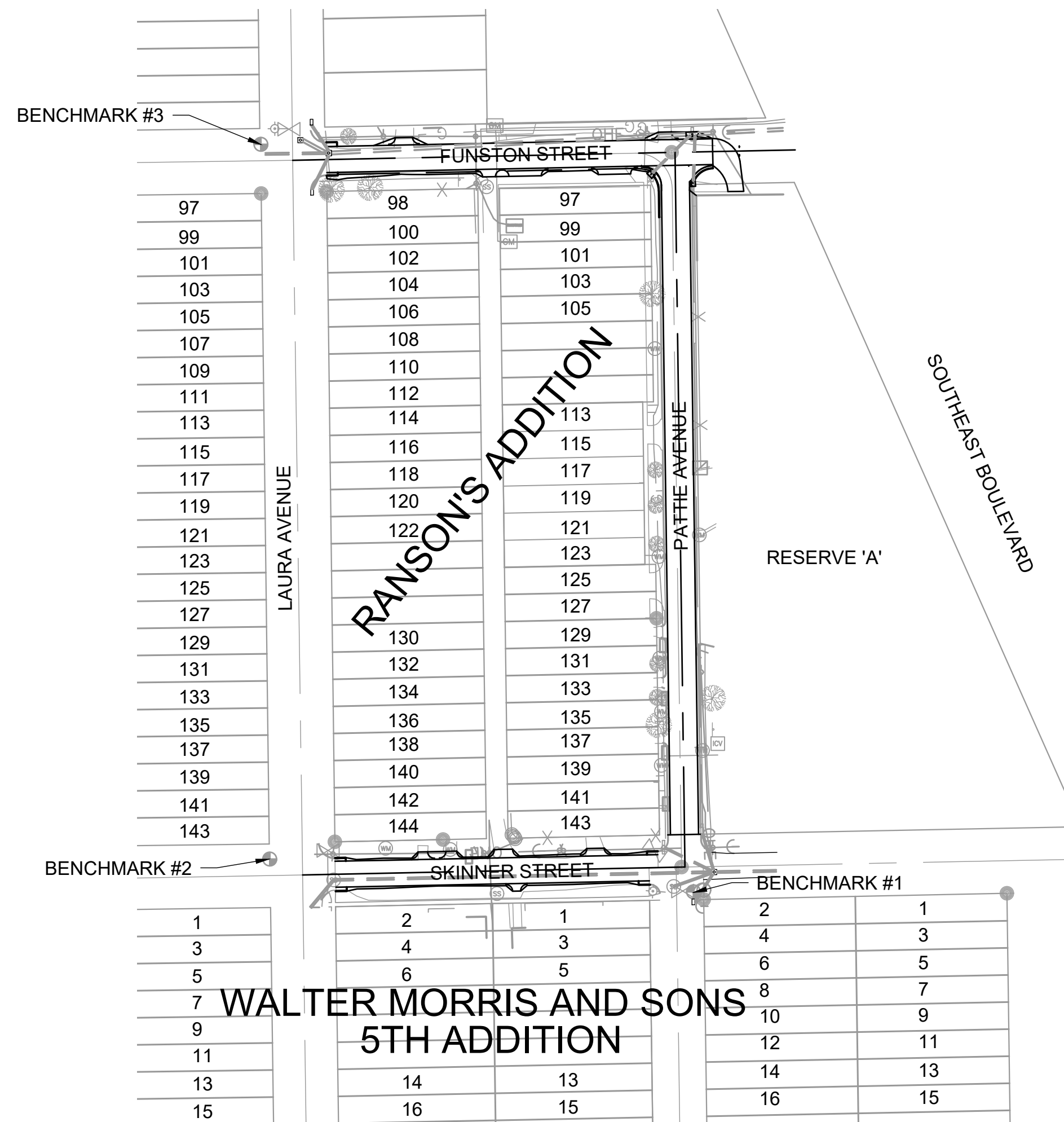
Vicinity Map

PROJECT
LOCATION

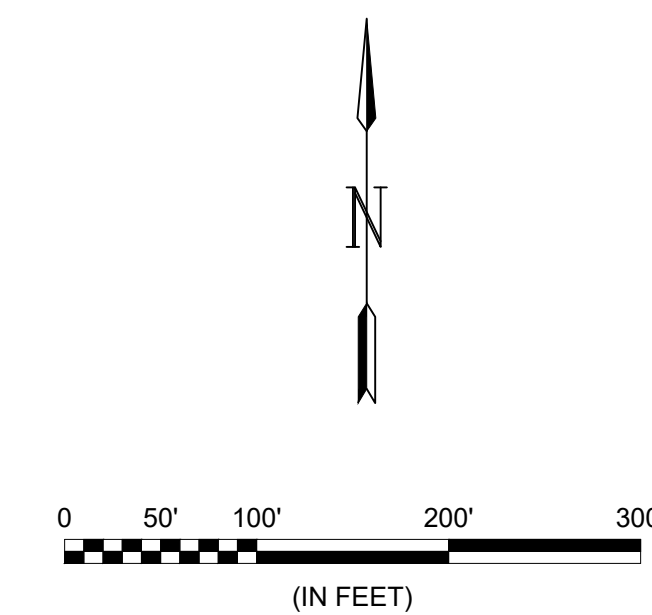
Sheet List Table

Sheet Number	Sheet Title
1	TITLESHEET
2	GENERAL NOTES
3	ASPHALT PAVING DETAILS
4	CURB & GUTTER DETAILS
5	FUNSTON
6	PATTIE
7	PATTIE (2)
8	SKINNER
9	DRIVEWAYS & VALLEY GUTTER (FUNSTON)
10	SKINNER DRIVEWAYS & VALLEY GUTTER (SKINNER)
11	FUNSTON X-SEC
12	SKINNER X-SEC
13	SEEDING & TESTING NOTES
14	SEEDING & EROSION CONTROL PLAN
15	BACK OF CURB PROTECTION DETAILS
16	SILT FENCE DETAILS
17	STRAW BALE DETAILS
18	STREET IMPROVEMENT PROJECTS
19	SUBDIVISION DEVELOPMENT PROCESS

EARTHWORK QUANTITIES	
Description	Cu. Yds.
Cut	1400
Fill	0
Net (Cut)	1400



No Special Assessment for this project.



BENCHMARK #1
 CHISELED SQUARE ON THE TOP OF CURB ON THE SOUTH CURB RETURN AT THE SOUTHEAST CORNER OF PATTIE AVENUE & SKINNER STREET
 ELEVATION = 1287.53 (NAVD88, G18)

BENCHMARK #2
 CHISELED SQUARE ON THE TOP OF CURB ON THE WEST CURB RETURN AT THE NORTHWEST CORNER OF LAURA AVENUE & SKINNER STREET
 ELEVATION = 1287.96 (NAVD88, G18)

BENCHMARK #3
 CHISELED SQUARE ON THE TOP OF CURB ON THE WEST CURB RETURN AT THE NORTHWEST CORNER OF LAURA AVENUE & FUNSTON STREET
 ELEVATION = 1287.30 (NAVD88, G18)



JULY 2023

PLANS PREPARED BY



NOTE: All coordinates listed are modified NAD83 Kansas State Plane Zone South unless otherwise noted. To convert listed coordinates to NAD83 Kansas State Plane Zone South coordinates multiply the northing and easting by the project scale factor of 0.99986961. Elevation datum is NAVD88 Geoid 18 unless otherwise noted.