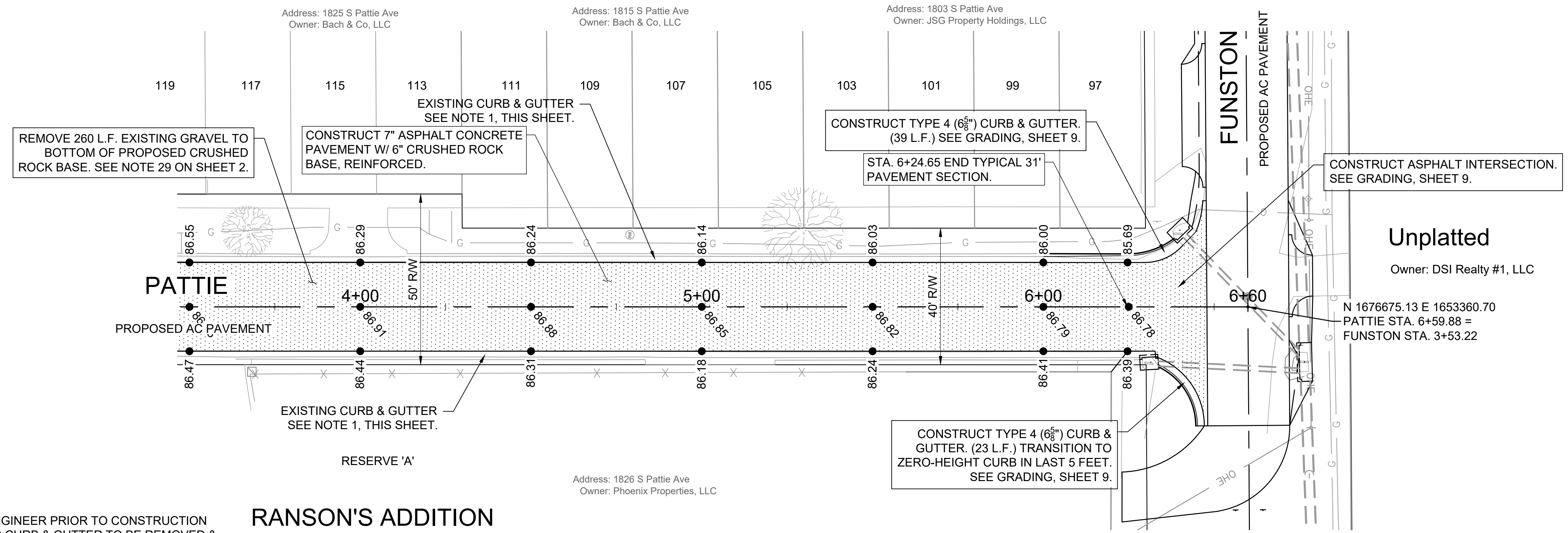
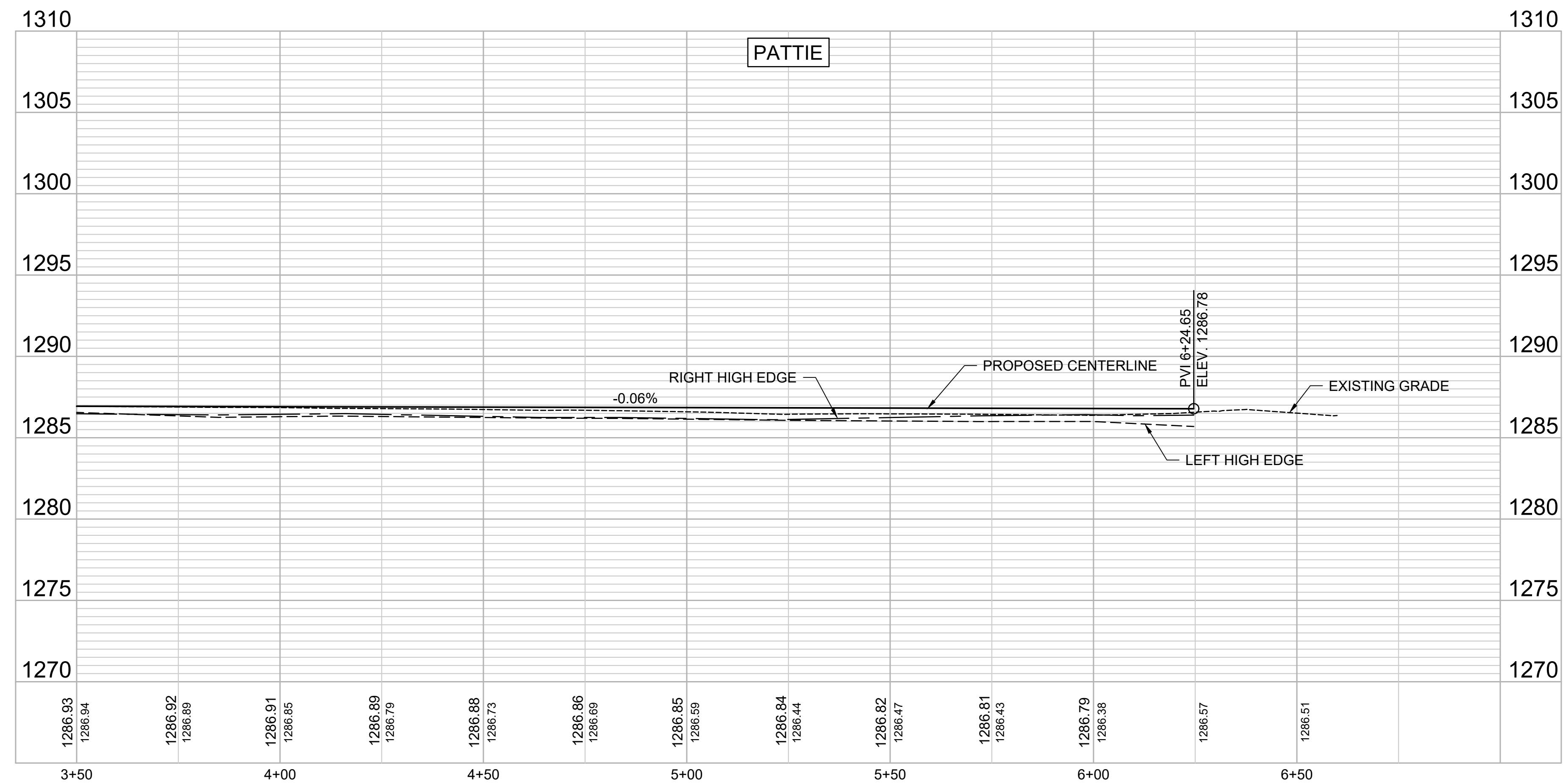
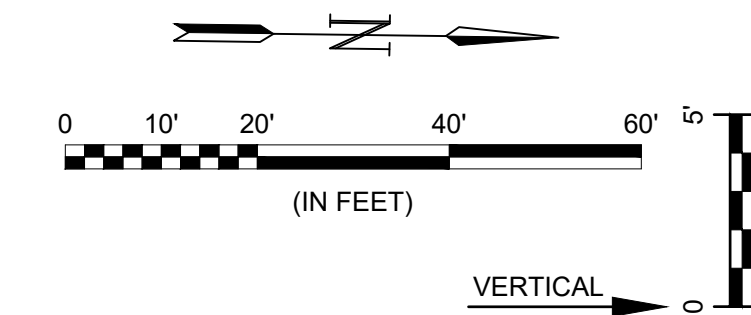


# RANSON'S ADDITION



## RANSON'S ADDITION

- NOTES:
- CONTRACTOR SHALL COORDINATE WITH FIELD ENGINEER PRIOR TO CONSTRUCTION OF PAVEMENT IN ORDER TO DETERMINE EXISTING CURB & GUTTER TO BE REMOVED & REPLACED. CLEAN ALL CURB & GUTTER PRIOR TO MAKING DETERMINATION.
  - CONTRACTOR SHALL TAKE CARE TO PROTECT ALL EXISTING TREES FROM DAMAGE.



Unplatted  
Owner: DSI Realty #1, LLC

N 1676675.13 E 1653360.70  
PATTIE STA. 6+59.88 =  
FUNSTON STA. 3+53.22

© 2023 GARVER, LLC  
THIS DOCUMENT, ALONG WITH THE IDEAS AND DESIGNS CONVEYED HEREIN, SHALL BE CONSIDERED INSTRUMENTS OF PROFESSIONAL SERVICE AND ARE PROPERTY OF GARVER, LLC. ANY USE, REPRODUCTION, OR DISTRIBUTION OF THIS DOCUMENT, ALONG WITH THE IDEAS AND DESIGN CONTAINED HEREIN, IS PROHIBITED UNLESS AUTHORIZED IN WRITING BY GARVER, LLC OR EXPLICITLY ALLOWED IN THE GOVERNING PROFESSIONAL SERVICES AGREEMENT FOR THIS WORK.

1995 Midfield Rd  
Wichita, KS 67209  
(316) 264-8008

Owner: DSI Realty #1, LLC

N 1676675.13 E 1653360.70  
PATTIE STA. 6+59.88 =  
FUNSTON STA. 3+53.22



REV.	DATE	DESCRIPTION	BY



CITY OF WICHITA  
WICHITA, KANSAS

FUNSTON, PATTIE,  
AND SKINNER  
PAVING

PATTIE (2 OF 2)

JOB NO.: 22T41008  
DATE: JUL 2023  
DESIGNED BY: CDJ  
DRAWN BY: CDJ

BAR IS ONE INCH ON ORIGINAL DRAWING  
IF NOT ONE INCH ON THIS SHEET, ADJUST SCALES ACCORDINGLY.

DRAWING NUMBER  
-----

SHEET NUMBER **7** OF **19**

File: L:\2022\22T41008 - Funston-Pattie-Skinner St Replacement\Drawings\C3D\Paving Sheets\PATTIE (1).dwg Last Save: 9/1/2023 4:00 PM Last saved by: CDJurey  
Last plotted by: Jurey, Caleb D. Plot Date: 9/1/2023 4:13 PM Plotter used: None