

# GENERAL NOTES:

- THE CONTRACTOR SHALL COMPLY WITH ALL APPLICABLE SAFETY REGULATIONS. ALL CONSTRUCTION SHALL BE COMPLETED FOLLOWING CURRENT CITY STANDARD SPECIFICATIONS AND SPECIAL PROVISIONS.
- CONTRACTOR WILL BE REQUIRED TO PROVIDE NOTICE TO UTILITY COMPANIES A MINIMUM OF SEVENTY-TWO (72) HOURS PRIOR TO ANY EXCAVATION, AS FOLLOWS:

KANSAS ONE-CALL 687-2470

THE CONTRACTOR MUST NOTIFY THE FOLLOWING IN CASE OF AN EMERGENCY:

|                               |                |
|-------------------------------|----------------|
| AT&T                          | 1-800-246-8464 |
| BLACK HILLS ENERGY            | 1-800-694-8989 |
| CITY OF WICHITA WATER & SEWER | 1-316-219-8921 |
| CITY OF WICHITA STORMWATER    | 1-316-268-4090 |
| CITY OF WICHITA TRAFFIC       | 1-316-268-4034 |
| COX COMMUNICATIONS            | 1-888-249-3530 |
| KANSAS GAS SERVICE            | 1-888-482-4950 |
| EVERGY                        | 1-800-544-4857 |

- UTILITY SERVICE LINES, POLES, ETC. ARE TO BE ADJUSTED AS NECESSARY BY OTHERS PRIOR TO CONSTRUCTION UNLESS THE PLANS SPECIFICALLY CALL FOR THEIR ADJUSTMENT BY THE CONTRACTOR OR UNLESS THE PLANS SPECIFICALLY IDENTIFY A UTILITY TO BE ADJUSTED BY ITS OWNER DURING CONSTRUCTION. EXISTING UTILITIES AND THEIR LOCATION, AS SHOWN ON THE PLANS, REPRESENT THE BEST INFORMATION OBTAINABLE FOR DESIGN. THE CONTRACTOR WILL BE REQUIRED TO WORK AROUND EXISTING UTILITIES WITHIN THE RIGHT-OF-WAY WHICH DO NOT CONFLICT WITH PROPOSED CONSTRUCTION.
- RUBBLE FROM THE REMOVAL OF MISCELLANEOUS STRUCTURES AND EXCESS EXCAVATION WHICH IS TO BE WASTED SHALL BE DISPOSED OF ON SITES TO BE PROVIDED BY THE CONTRACTOR. THESE SITES SHALL BE APPROVED BY THE ENGINEER AS TO SUITABILITY, APPEARANCE AND SITE LOCATION. LOCATIONS, IN THE OPINION OF THE ENGINEER, THAT WILL LEAVE AN UNSIGHTLY APPEARANCE WILL NOT BE APPROVED. ALL DISPOSAL SITES MUST BE APPROVED BY THE KANSAS DEPARTMENT OF HEALTH AND ENVIRONMENT. MATERIAL EITHER STOCKPILED OR DISPOSED OF IN A FLOOD PLAIN WILL REQUIRE A KANSAS STATE BOARD OF AGRICULTURE PERMIT. ANY MATERIAL DUMPED IN WATERS OF THE UNITED STATES OR WETLANDS IS SUBJECT TO U.S. CORPS. OF ENGINEERS PERMITTING REGULATIONS. ANY MATERIAL BURIED OR STOCKPILED BEYOND APPROVED CONSTRUCTION LIMITS WILL REQUIRE ADDITIONAL ARCHAEOLOGICAL INVESTIGATIONS UNLESS BURIED IN A PREVIOUSLY APPROVED BORROW LOCATION.
- TREES AND SHRUBS IN PUBLIC RIGHT-OF-WAY WHICH ARE IN DIRECT CONFLICT WITH PROPOSED NEW CONSTRUCTION SHALL BE REMOVED BY THE CONTRACTOR WITH THE ENGINEER'S APPROVAL. TREES AND SHRUBS WHICH ARE NOT IN DIRECT CONFLICT WITH PROPOSED NEW CONSTRUCTION SHALL BE SAVED AND PROTECTED FROM DAMAGE.
- THE CONTRACTOR SHALL GIVE ALL PROPERTY OWNERS AND/OR TENANTS OF DEVELOPED PROPERTY ADJUTING THE CONSTRUCTION OF THIS PROJECT A MINIMUM OF TEN (10) DAYS NOTICE PRIOR TO START OF CONSTRUCTION.
- THE CONTRACTOR SHALL BE RESPONSIBLE FOR PRESERVING PROPERTY IRONS. THE CONTRACTOR WILL BE REQUIRED TO RE-ESTABLISH ANY PROPERTY IRONS WHICH ARE DAMAGED OR DESTROYED BY HIS CONSTRUCTION OPERATIONS. SUCH IRONS SHALL BE RE-ESTABLISHED BY A LICENSED LAND SURVEYOR IN ACCORDANCE WITH STATE LAWS.
- THE ENGINEERING DIVISION SHALL FIELD LOCATE WATER VALVES ONE TIME DURING CONSTRUCTION WHEN REQUESTED BY THE CONTRACTOR. IT SHALL BE THE CONTRACTOR'S RESPONSIBILITY TO PRESERVE SUCH FIELD LOCATIONS DURING THE CONSTRUCTION PROCESS. WATER VALVES, VALVE BOXES OR FIRE HYDRANTS DAMAGED DURING CONSTRUCTION SHALL BE REPAIRED BY CONTRACTOR AT HIS OWN EXPENSE. VALVE BOXES AND WATER METERS WITHIN THE PROJECT LIMITS SHALL BE ADJUSTED TO MATCH FINAL GRADES BY THE CONTRACTOR.
- THE CONTRACTOR SHALL NOTIFY THE CONSULTANT ENGINEER AND DAWNITA REINHARDT WITH THE CITY AT 316-268-4574 WITH THE ANTICIPATED CONSTRUCTION START DATE AND NOTIFY THEM OF PROJECT COMPLETION. STAKING AND INSPECTION FOR THIS PROJECT WILL BE THE RESPONSIBILITY OF THE CONTRACTOR.
- IF TRAFFIC WILL BE IMPACTED BY CONSTRUCTION, A TRAFFIC CONTROL PLAN MUST BE SUBMITTED AND APPROVED BY THE CITY TRAFFIC ENGINEER AT [TRAFFIC@WICHITA.GOV](mailto:TRAFFIC@WICHITA.GOV) BEFORE CONSTRUCTION CAN BEGIN. THE CONTRACTOR SHALL BE RESPONSIBLE FOR ALL TRAFFIC CONTROL MEASURES TO FACILITATE CONSTRUCTION. ALL CONSTRUCTION ZONE MARKINGS AND SIGNAGE SHALL CONFORM TO THE LATEST VERSION OF THE MANUAL ON UNIFORM TRAFFIC CONTROL DEVICES (MUTCD) AS PUBLISHED BY THE US DEPT. OF TRANSPORTATION, FEDERAL HIGHWAY ADMINISTRATION. ALL COSTS ASSOCIATED WITH CONSTRUCTION MARKINGS AND SIGNAGE SHALL BE THE CONTRACTORS RESPONSIBLY.
- ALL ELEVATIONS SHOWN ARE NAVD 88.
- ALL AREAS DISTURBED DURING CONSTRUCTION THAT WILL NOT BE UNDER PROPOSED PAVEMENT SHALL BE RESTORED TO MATCH EXISTING CONDITIONS.
- ANY SIDEWALK, DRIVE APPROACH, CURB, OR STREET PAVEMENT REMOVED TO CONSTRUCT PROJECT MUST HAVE A PAVEMENT CUT PERMIT AND BE REPLACED BY THE CITY CONTRACTOR. PERMITS CAN BE OBTAINED BY CALLING 316-268-4501 OR 316-268-4480.
- ALL APPLICABLE FEES (TAP, EQUITY, IN LIEU OF & MAIN BENEFIT) MUST BE PAID BEFORE ANY CONNECTIONS CAN BE MADE ON THIS PROJECT.
- CITY MAINTENANCE OF WATER MAINS ENDS AT RIGHT-OF-WAY OR EASEMENT LINE OR WITHIN TWO FEET OF VAULT.

- OPENING AND CLOSING OF WATER VALVES SHALL BE DONE SLOWLY TO PREVENT DAMAGE TO THE WATER DISTRIBUTION SYSTEM FROM WATER HAMMER. ALL VALVES CLOSED BY THE CONTRACTOR MUST BE REOPENED AS NEW CONSTRUCTION PERMITS. THE PROJECT INSPECTOR MUST ASCERTAIN THAT ANY VALVE CLOSED BY THE CONTRACTOR IS REOPENED. THE CONTRACTOR WILL BE PERMITTED TO OPERATE WATER VALVES ONLY WHEN THE PROJECT INSPECTOR ASSIGNED TO THE PROJECT IS PRESENT.
- THE CONTRACTOR SHALL LAY A TRACER WIRE AND SET TEST STATIONS ALONG ALL WATER PIPE INSTALLED IN ACCORDANCE WITH CITY SPECIFICATIONS AND TRACER WIRE DETAIL ON DETAIL SHEET WL-101, COST IS SUBSIDIARY TO PIPE INSTALLATION.
- THE CONTRACTOR SHALL PROVIDE MATERIALS FOR TEMPORARY BLOWOFF OF WATERLINES. CONNECTIONS TO THE EXISTING WATERLINE(S) SHALL BE MADE WITH CLEAN, SWABBED PIPE AND FLUSHED UPON COMPLETION OF TIE-INS.
- REQUESTS FOR SHORT TERM WATER INTERRUPTIONS SHALL BE MADE TO THE CITY WATER DISTRIBUTION DIVISION AND WILL BE SUBJECT TO THEIR APPROVAL. THE CONTRACTOR SHALL GIVE WRITTEN NOTICE TO ANY PROPERTY OWNER, BUSINESS, AND/OR TENANTS THAT WILL HAVE WATER SERVICE INTERRUPTED AT LEAST 5 DAYS IN ADVANCE. SUCH NOTIFICATIONS SHOULD INDICATE THE TIME AND DATE THAT THE WATER WILL BE TURNED OFF AND WHEN THE SERVICE WILL BE RESTORED. NO BUSINESS, PROPERTY OWNER, AND/OR TENANTS SHALL BE WITHOUT WATER SERVICE FOR MORE THAN 8 HOURS. PROPOSED TIE IN LOCATIONS WHICH WILL AFFECT WATER SERVICE TO PROPERTY OWNERS SHALL BE PREFORMED DURING NON-PEAK HOURS.
- THE CONTRACTOR MUST SCHEDULE THE CONNECTIONS TO THE EXISTING MAIN WITH THE CITY SUCH THAT THERE IS A MINIMUM DISRUPTION OF SERVICE. CONNECTIONS SHALL BE MADE DURING PERIODS OF LOW WATER USAGE. THE CONTRACTOR SHALL SUBMIT HIS PROPOSED SCHEDULE FOR COMPLETING WORK FOR CITY APPROVAL AT LEAST 10 DAYS PRIOR TO BEGINNING CONSTRUCTION.
- DEFLECTIONS AT PIPE JOINT OR COUPLINGS SHALL NOT EXCEED THE PIPE MANUFACTURERS RECOMMENDED MAXIMUM. WHERE DEFLECTIONS ARE GREATER THAN THE MAXIMUM ALLOWED, THE CONTRACTOR SHALL UTILIZE FITTINGS.
- ANY EXISTING JOINT EXPOSED DURING EXCAVATION SHALL BE REPLACED IF WITHIN FOUR FEET OF PROPOSED JOINT.
- VALVES 12 INCH AND LARGER ARE TO BE OPERATED BY THE CITY WATER DISTRIBUTION DIVISION, 48 HOURS OF ADVANCE NOTICE IS REQUIRED WITH THE WATER DISPATCH AT 316-291-8921.
- ALL WET TAPS SHALL BE INSTALLED BY THE CITY OF WICHITA. THE CONTRACTOR WILL REIMBURSE THE CITY FOR TAPPING FEES PRIOR TO TAP BEING MADE, UNLESS NOTED ON PLANS.
- THE CONTRACTOR SHALL PROTECT FROM DAMAGE AND SUPPORT EXISTING UTILITIES THROUGH CONSTRUCTIONS AS APPROVED BY THE UTILITY OWNER AND THE ENGINEER AT THE CONTRACTORS EXPENSE.
- CONTRACTOR SHALL LIMIT THE EXTENT OF TRENCH OPENINGS OVERNIGHT AND WEEKENDS TO LESS THAN 50 FEET.
- WICHITA FIRE DEPARTMENT INSPECTIONS MAY BE SCHEDULED BY CALLING DAWNITA REINHARDT 316-268-4574.
- SITE RESTORATION AND PREPARATION SHALL BE SUBSIDIARY TO THE PROJECT.
- THE CONTRACTOR SHALL USE BEST MANAGEMENT PRACTICES (BMP'S) TO PREVENT ERODED SOIL FROM ENTERING DITCHES, CULVERTS, AND DRAINAGE AREAS. STANDARD DETAILS FOR EROSION BMP'S ARE AVAILABLE FROM THE ENGINEER. THE CONTRACTOR SHALL FOLLOW THE INTENT OF THE BMP'S WHICH ACT AS A GUIDELINE.
- EACH BIDDER SHALL VISIT THE SITE OF THE PROJECT THROUGHOUT ITS ENTIRE EXTENT BEFORE SUBMITTING A PROPOSAL IN ORDER TO BECOME BETTER INFORMED OF THE EXISTING FIELD CONDITIONS AND OBSTACLES WHICH MIGHT BE ENCOUNTERED DURING CONSTRUCTION. EACH BIDDER SHOULD UNDERSTAND THAT NO ADDITIONAL COMPENSATION WILL BE AWARDED FOR EXTRA WORK THAT SHOULD HAVE BEEN EVALUATED PRIOR TO BIDDING.
- ALL WATER PIPE TRENCHING IN PAVEMENT OR DRIVEWAYS, WHICH WILL BE REQUIRED TO CARRY TRAFFIC UNTIL PERMANENT PAVING REPLACEMENT, SHALL BE TOPPED WITH A MINIMUM OF 6" CRUSHED ROCK (COMPACTED) TO BE INCIDENTAL TO THE PROJECT. CONTRACTOR SHALL BE REQUIRED TO MAINTAIN TEMPORARY CRUSHED ROCK UNTIL PERMANENT PAVEMENT IS INSTALLED.
- CONTRACTOR TO FIELD VERIFY LOCATION AND DEPTH OF ALL UTILITIES PRIOR TO CONSTRUCTION AND REPORT FINDINGS TO PROJECT ENGINEER. LOCATION INFORMATION HAS BEEN OBTAINED FROM VARIOUS COMPANIES AND IS EITHER FROM COMPANY UTILITY DRAWINGS OR COMPANY PROVIDED FIELD LOCATIONS. THE PLAN LOCATIONS SHOWN ARE NOT GUARANTEED. ADDITIONAL EXITING UTILITIES MAY BE ENCOUNTERED.
- CONTRACTOR TO FOLLOW STANDARD CITY OF WICHITA BEST MANAGEMENT PRACTICES FOR EROSION CONTROL.
- ALL PROPOSED WATER STRUCTURES TO BE INSTALLED PER CITY OF WICHITA STANDARD DETAILS/ SPECIFICATIONS.
- MAINTAIN A MINIMUM OF 10-FOOT HORIZONTAL SEPARATION BETWEEN ALL WATER LINES (MAINS, SERVICES, AND FIRE HYDRANTS), AND ALL SANITARY SEWER LINES (MAINS, SERVICES, AND MANHOLES). ALL SEPARATION DISTANCES ARE TO BE MEASURED FROM EDGE-TO-EDGE AT THE CLOSEST POINT.
- MAINTAIN A MINIMUM OF 2-FOOT VERTICAL SEPARATION BETWEEN ALL WATER LINES (MAINS AND SERVICES) AND ALL GRAVITY SANITARY SEWER LINES (MAINS, SERVICES, AND MANHOLES) AT CROSSINGS. ALL SEPARATION DISTANCES ARE TO BE MEASURED FROM EDGE-TO-EDGE, AT THE CLOSEST POINT.
- MAINTAIN A MINIMUM OF 2-FOOT VERTICAL SEPARATION BETWEEN ALL WATER LINES (MAIN AND SERVICES) AND ALL PRESSURIZED SANITARY SEWER LINES (FORCED MAINS AND SERVICES) AT CROSSINGS. WATER LINES MUST ALWAYS BE PLACED ABOVE PRESSURIZED SANITARY SEWER LINES WHERE THEY CROSS. ALL SEPARATION DISTANCES ARE TO BE MEASURED FROM EDGE-TO-EDGE, AT THE CLOSEST POINT.

**AS BUILTS**

Contractor: McCallough Excavation  
6-9-2023

Project Inspector: Larry Gann  
**KEMILLER ENGINEERING**  
117 E. LARK, WICHITA, KS 67202 (316)268-4574

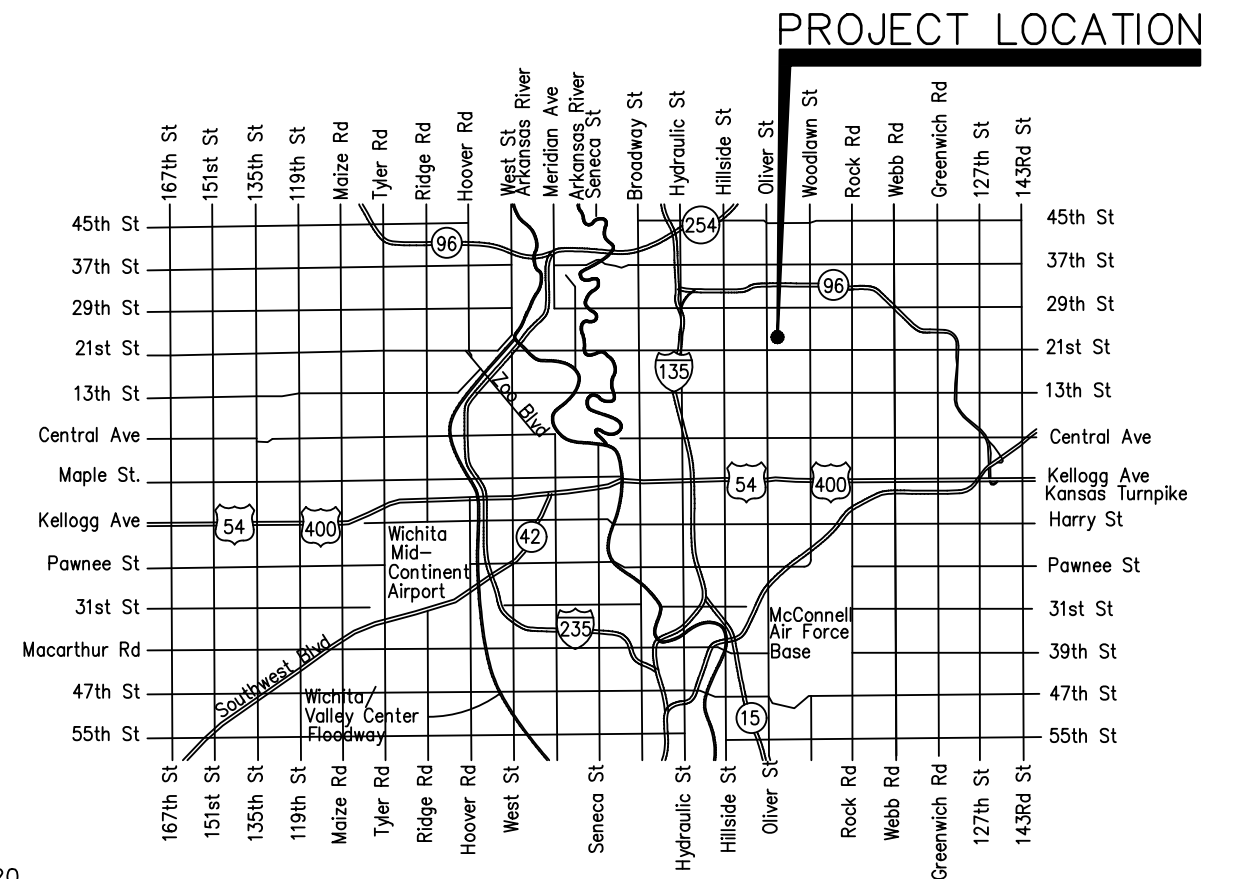
**Northern c-900  
SIP MJ ACC. PACKS  
MUELLER (STORZ) FIRE HYD  
NAPF DICL RISERS  
SIP AND TYLER BENDS  
SADDLE 2"**

**LOCATION MEASUREMENTS ON  
PAGE 3**      **2022-023340PPW (54030980)**

# WATER LINE IMPROVEMENTS TO SERVE LOT 2

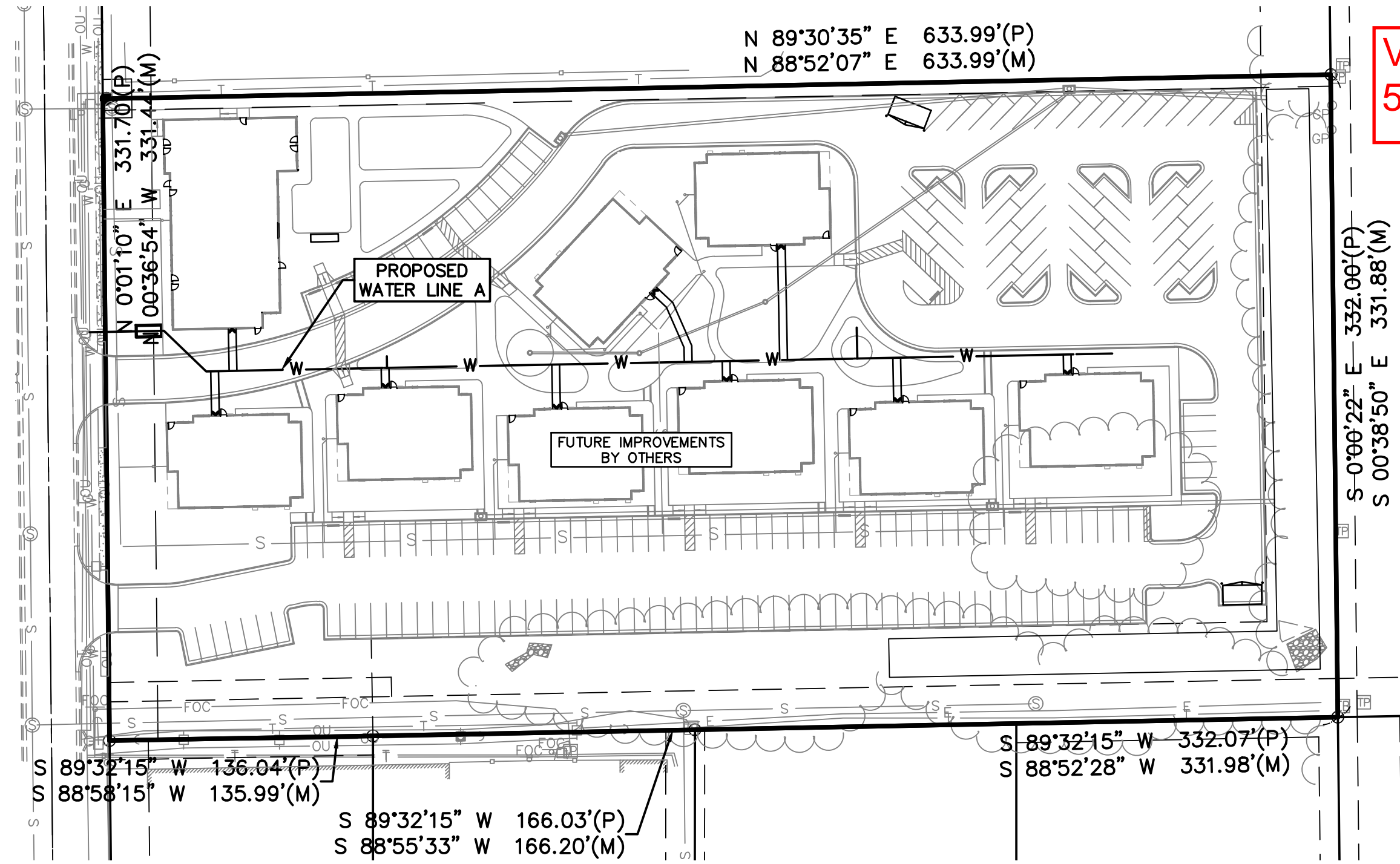
# WICHITA LAND ADDITION CITY OF WICHITA, KANSAS

**GARY JANZEN, P.E. CITY ENGINEER**  
**PROJECT NUMBER**



## VICINITY MAP

**Vault Location From center of Pinecrest and Looman:  
597' South & 47' East**



### Sheet List Table

- |    |                                 |
|----|---------------------------------|
| 01 | TITLE SHEET                     |
| 02 | WL A PLAN & PROFILE             |
| 03 | FIRE SERVICE PLAN & PROFILE     |
| 04 | DOMESTIC SERVICE PLAN & PROFILE |
| 05 | EROSION CONTROL PLAN            |
| 06 | WATER ASSEMBLY DETAIL           |
| 07 | WATER SERVICE DETAIL            |
| 08 | VAULT & METER ASS'Y DETAIL      |
| 09 | MISC WATER DETAIL               |
| 10 | TRENCH & BEDDING DETAILS        |
| 11 | CURB & INLET PROTECTION DETAIL  |
| 12 | SILT FENCE BARRIER DETAIL       |
| 13 | STRAW BALE BARRIER DETAIL       |
| 14 | STREET IMPROV. PROJECT DETAIL   |
| 15 | SUBDIVISION DEV. PROCESS DETAIL |
| 16 | PLAT                            |

## BENCHMARKS

**DATUM:**  
VERTICAL DATUM IS NAVD 88 DERIVED FROM USING THE WICHITA NTRIP NETWORK ORTHOMETRIC HEIGHT WAS DETERMINED USING THE GEOID 18 MODEL.

**BENCHMARKS:**  
BM #61: SQUARE CUT SET ON BACK OF CURB ON EAST SIDE OF PINECREST AVENUE NEAR FIRE HYDRANT AT SOUTHWEST CORNER OF SITE. ELEV=1395.66

BM #62: SQUARE CUT SET ON WEST SIDE OF SIDEWALK ON EAST SIDE OF PINECREST AVENUE IN LINE OF SPLIT RAIL FENCE TO THE EAST NEAR NORTHWEST CORNER OF SITE. ELEV=1388.47

## FEBRUARY 2023

EXISTING TOPOGRAPHIC AND BOUNDARY INFORMATION PROVIDED BY:  
**KAW VALLEY ENGINEERING**  
200 N. EMPORIA, SUITE 100  
WICHITA, KS 67202  
PHONE: 316.440.4304  
FAX: 316.440.4309  
EMAIL: [WH@KVENG.COM](mailto:WH@KVENG.COM)

THIS PLAN SHEET IS PART OF AN OVERALL KAW VALLEY ENGINEERING PLAN SET FOR THE SPECIFIC IMPROVEMENTS CONTEMPLATED THEREIN. AS SUCH, THE INFORMATION REFLECTED HEREIN SHOULD ONLY BE INTERPRETED WITHIN THE CONTEXT OF THE COMPLETE PLAN SET.



PROJ. NO. G21\_2066    DSN: EAM    SHAWN R. BRYAN  
CFN: 2066WTS    DWN: CC    ENGINEER  
KS # 17899

200 N. EMPORIA, SUITE 100  
WICHITA, KANSAS 67202  
PH. (316) 440-4304 | FAX (316) 440-4309  
[www.kveng.com](http://www.kveng.com) | [www.kveng.com](http://www.kveng.com)

**KAW VALLEY ENGINEERING**

KAW VALLEY ENGINEERING, INC., IS AUTHORIZED TO OFFER ENGINEERING SERVICES BY KANSAS STATE CERTIFICATE OF AUTHORIZATION # E-113. EXPIRES 12/31/22

APPROVED AS NOTED  
BY CITY ENGINEER OF WICHITA  
& BY WICHITA FIRE DEPARTMENT

Engineering    APPROVED BY SHAWN MELLIES 02/22/2023

Utilities        APPROVED BY GREG LOLLEY 02/22/2023

Fire Dept.      APPROVED BY JOSE OCADIZ 02/22/2023

**NOTE TO CONTRACTORS**

**PUBLIC PROPERTY:**  
Inspection and testing for the waterline is to be provided by a Licensed Consulting Engineering Firm under contract with the Owner/Developer. Said inspection to be in accordance with the City of Wichita standard construction engineering practices and certified by a Licensed Professional Engineer licensed in the State of Kansas. No work shall be performed in dedicated easements or public right-of-way by the Contractor without such inspection nor shall any work be commenced without written authorization by City Engineering. All Construction and Materials shall comply with the City of Wichita Specifications and Standards and Special Provision (on file and available in the City Engineer's Office) or on the City's Website.

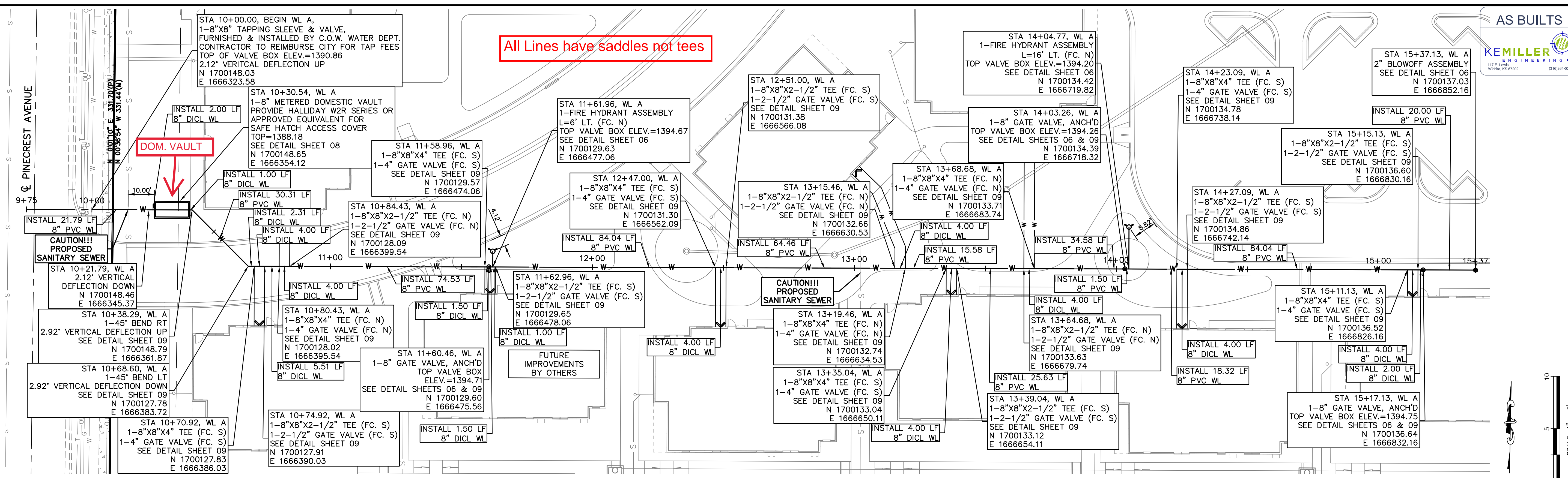
**PRIVATE PROPERTY:**  
Installation and testing for the fire protection line is to be performed by a City of Wichita licensed fire protection contractor in accordance with the fire codes as adopted by the City of Wichita. All material and construction practices for the fire protection line shall comply with the fire codes as adopted by the City of Wichita (available from the City of Wichita Fire Department). The Contractor shall not commence work without notification and approval of the Wichita Fire Department. Inspection of the fire protection line is to be provided by a licensed Engineering Firm under contract with the Owner/Developer and the Fire Department. The contractor shall not start work until the project inspector is assigned to the project and present on the site. Any work done without inspection will be required to be uncovered for inspection.

An approved copy of these plans signed by City staff are required on-site.

**SAFETY NOTICE TO CONTRACTOR**  
IN ACCORDANCE WITH GENERALLY ACCEPTED CONSTRUCTION PRACTICES, THE CONTRACTOR WILL BE SOLELY AND COMPLETELY RESPONSIBLE FOR CONDITIONS OF THE JOB SITE, INCLUDING SAFETY OF ALL PERSONS AND PROPERTY DURING PERFORMANCE OF THE WORK. THIS REQUIREMENT WILL APPLY CONTINUOUSLY AND NOT BE LIMITED TO NORMAL WORKING HOURS.

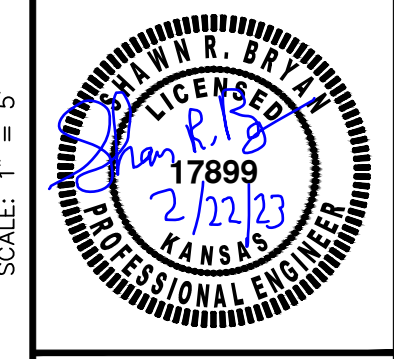
**WARRANTY / DISCLAIMER**  
THE DESIGNS REPRESENTED IN THESE PLANS ARE IN ACCORDANCE WITH ESTABLISHED PRACTICES OF CIVIL ENGINEERING FOR THE DESIGN FUNCTIONS AND USES INTENDED BY THE OWNER AT THIS TIME. HOWEVER, NEITHER KAW VALLEY ENGINEERING, INC NOR ITS PERSONNEL CAN OR DO WARRANTY THESE DESIGNS OR PLANS AS CONSTRUCTED, EXCEPT IN THE SPECIFIC CASES WHERE KAW VALLEY ENGINEERING PERSONNEL INSPECT AND CONTROL THE PHYSICAL CONSTRUCTION ON A CONTEMPORARY BASIS AT THE SITE.

**CAUTION - NOTICE TO CONTRACTOR**  
THE CONTRACTOR IS SPECIFICALLY CAUTIONED THAT THE LOCATION AND/OR ELEVATION OF EXISTING UTILITIES AS SHOWN ON THESE PLANS IS BASED ON RECORDS OF THE VARIOUS UTILITY COMPANIES AND, WHERE POSSIBLE, MEASUREMENTS TAKEN IN THE FIELD. THE INFORMATION IS NOT TO BE RELIED ON AS BEING EXACT OR COMPLETE. THE CONTRACTOR MUST CALL THE APPROPRIATE UTILITY COMPANY AT LEAST 72 HOURS BEFORE ANY EXCAVATION TO REQUEST EXACT FIELD LOCATION OF UTILITIES. IT SHALL BE THE RESPONSIBILITY OF THE CONTRACTOR TO RELOCATE ALL EXISTING UTILITIES WHICH CONFLICT WITH PROPOSED IMPROVEMENTS SHOWN ON THE PLANS.  
**THE CONTRACTOR SHALL EXPOSE EXISTING UTILITIES AT LOCATIONS OF POSSIBLE CONFLICTS PRIOR TO ANY CONSTRUCTION.**

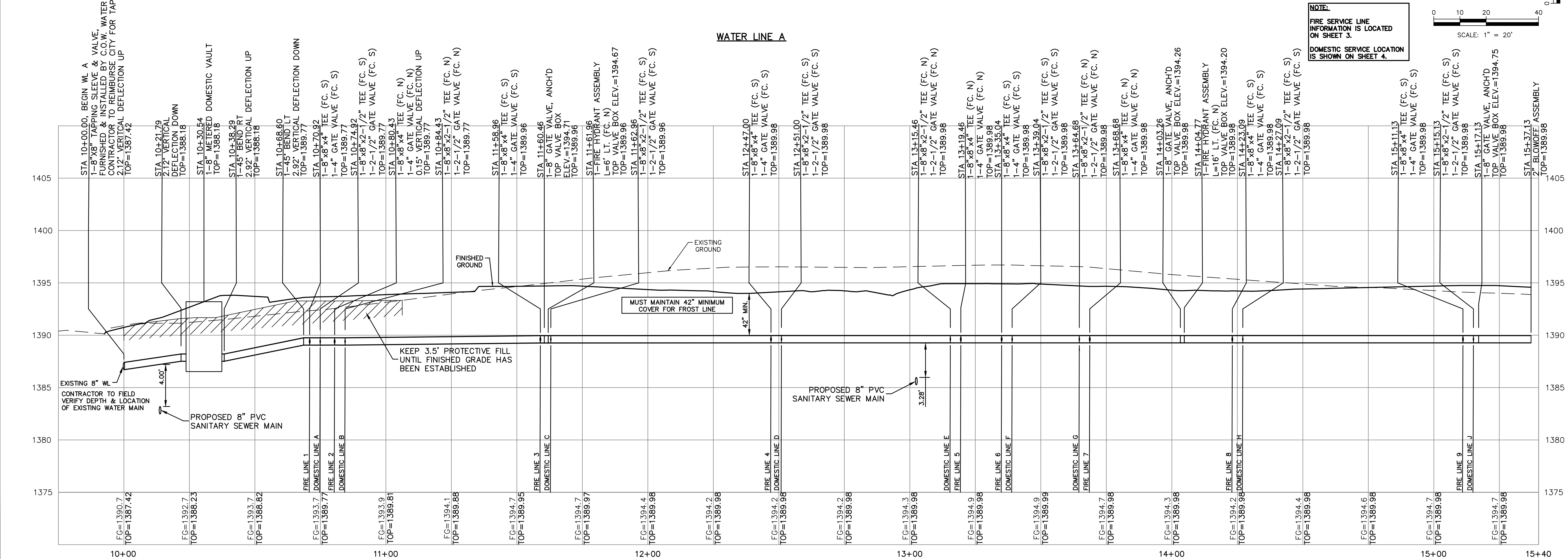


AS BUILTS  
 KEMILLER ENGINEERING  
 117 E. Louisa  
 WICHITA, KS 67202  
 (316) 264-4329

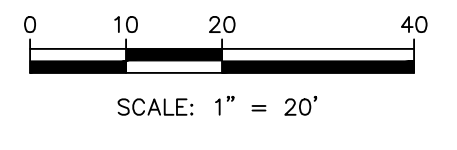
| REV | DATE    | DESCRIPTION     |
|-----|---------|-----------------|
| 0   | 2/22/23 | INITIAL RELEASE |
|     |         | DSN             |
|     |         | DWN             |
|     |         | CHK             |



SHAWN R. BRYAN  
 ENGINEER  
 KS # 17889



**NOTE:**  
 FIRE SERVICE LINE INFORMATION IS LOCATED ON SHEET 3.  
 DOMESTIC SERVICE LOCATION IS SHOWN ON SHEET 4.



THE COORDINATES PROVIDED IN THESE PLANS ARE FOR INFORMATION AND CHECKING PURPOSES ONLY. IT IS THE CONTRACTOR'S RESPONSIBILITY TO CALCULATE CONSTRUCTION STAKING COORDINATES ACCORDING TO THE DIMENSIONS SHOWN ON THESE PLANS. CONTRACTOR SHALL VERIFY THE ACCURACY OF THE COORDINATES SHOWN IN THE TABLE HEREON BEFORE CONSTRUCTION.

THIS PLAN SHEET IS PART OF AN OVERALL KAW VALLEY ENGINEERING PLAN SET FOR THE SPECIFIC IMPROVEMENTS CONTEMPLATED THEREIN. AS SUCH, THE INFORMATION REFLECTED HEREIN SHOULD ONLY BE INTERPRETED WITHIN THE CONTEXT OF THE COMPLETE PLAN SET.

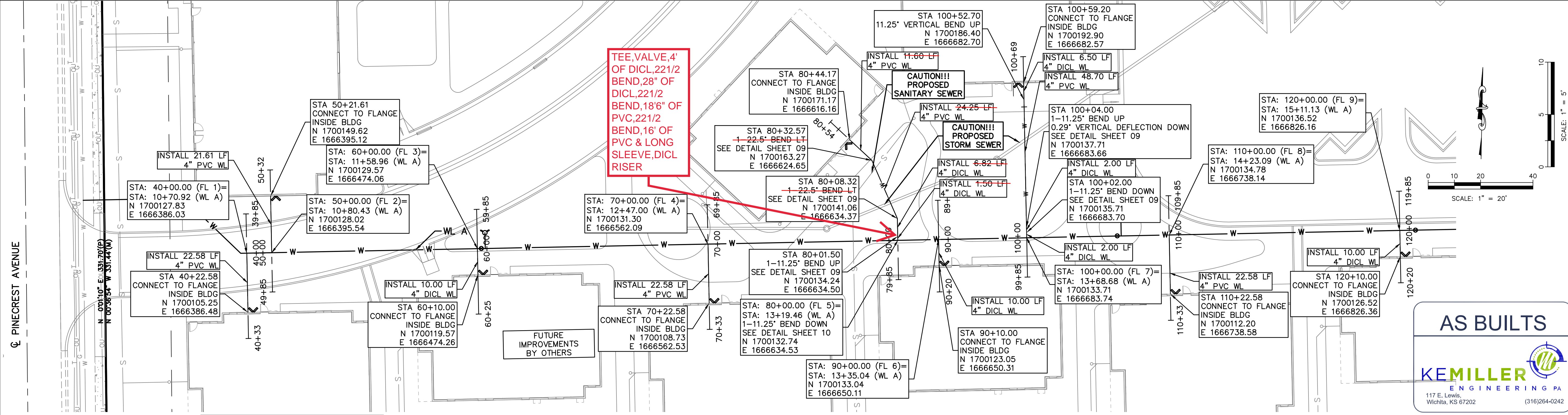
200 N. EMPORIA, SUITE 100  
 WICHITA, KANSAS 67202  
 PH. (316) 440-4304 | FAX (316) 440-4309  
 www.kawvalley.com | www.kveeng.com

**KAW VALLEY ENGINEERING**  
 KAW VALLEY ENGINEERING, INC. IS AUTHORIZED TO OFFER ENGINEERING SERVICES BY KANSAS STATE CERTIFICATE OF AUTHORIZATION # E-113. EXPIRES 12/31/22

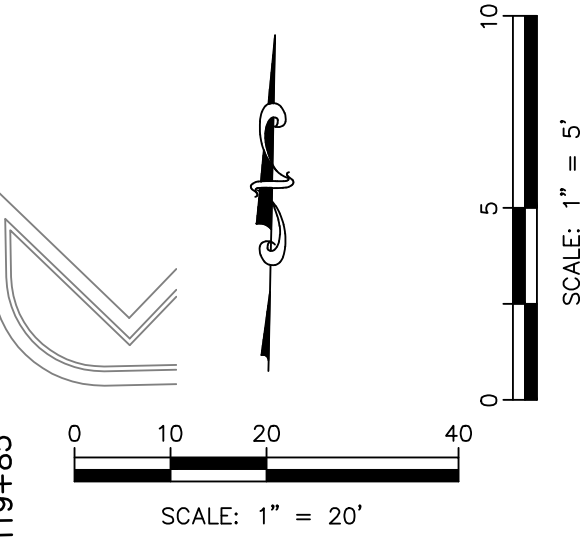
**SPECTRA STUDENT LIVING**  
 21ST STREET & PINECREST AVE  
 WICHITA, KANSAS

**WL A PLAN & PROFILE**

|           |          |
|-----------|----------|
| PROJ. NO. | G21-2066 |
| DESIGNER  | EKM      |
| CFN       | 2066WPP  |
| SHEET     | 02       |
| DRAWN BY  | CS       |
| REV       | 0        |

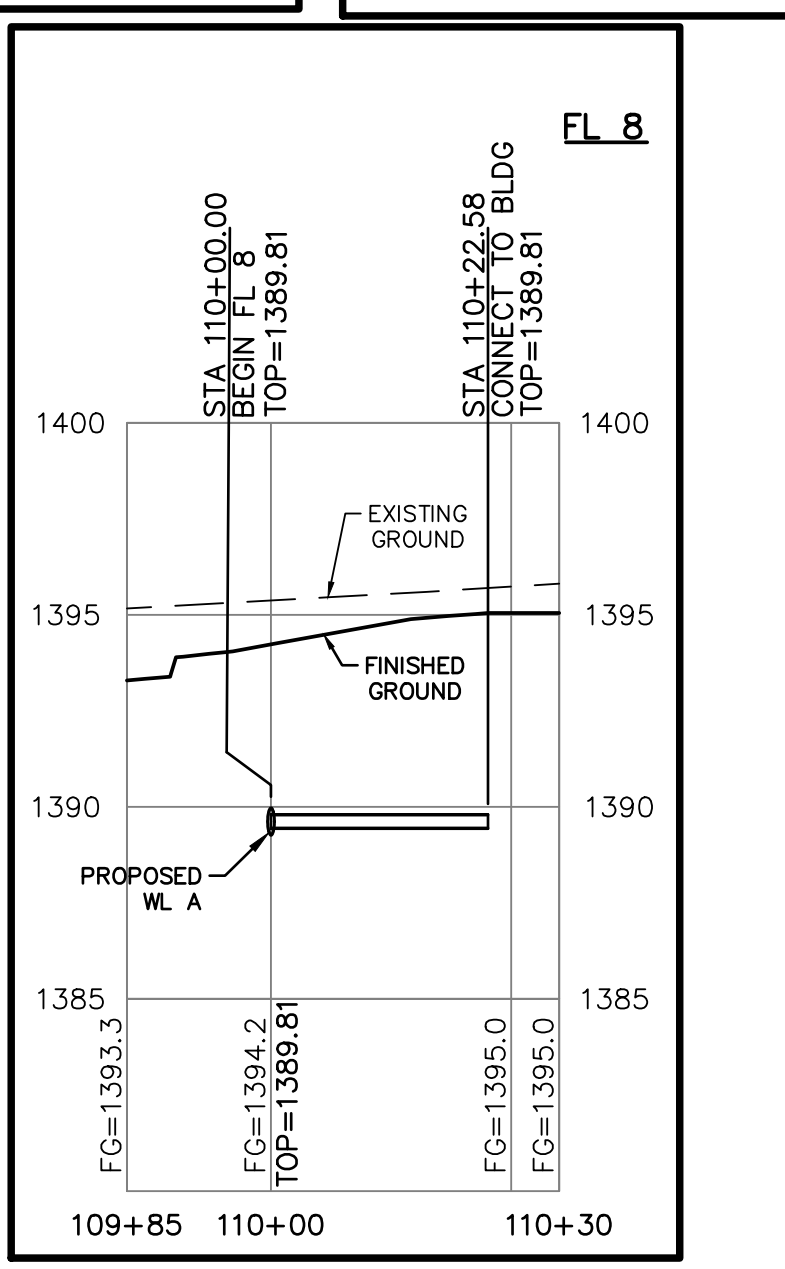
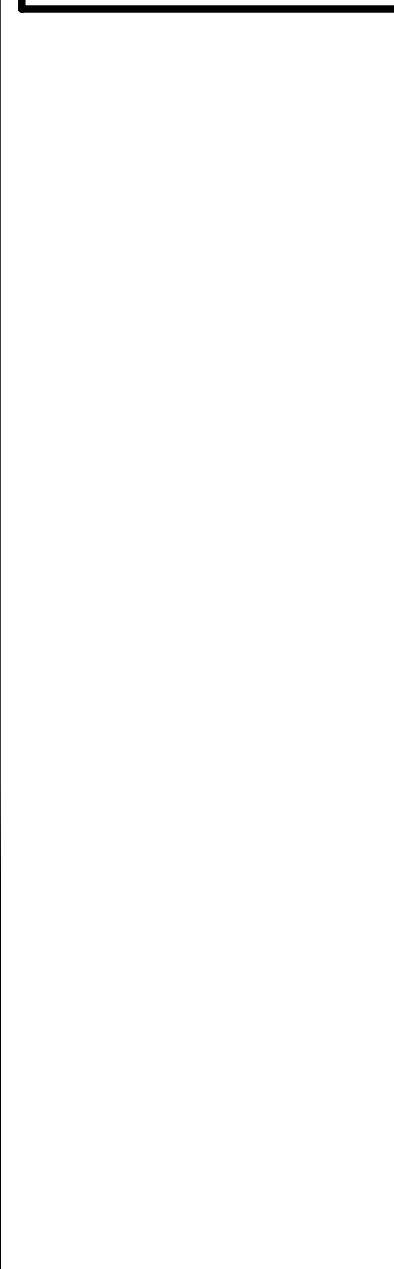
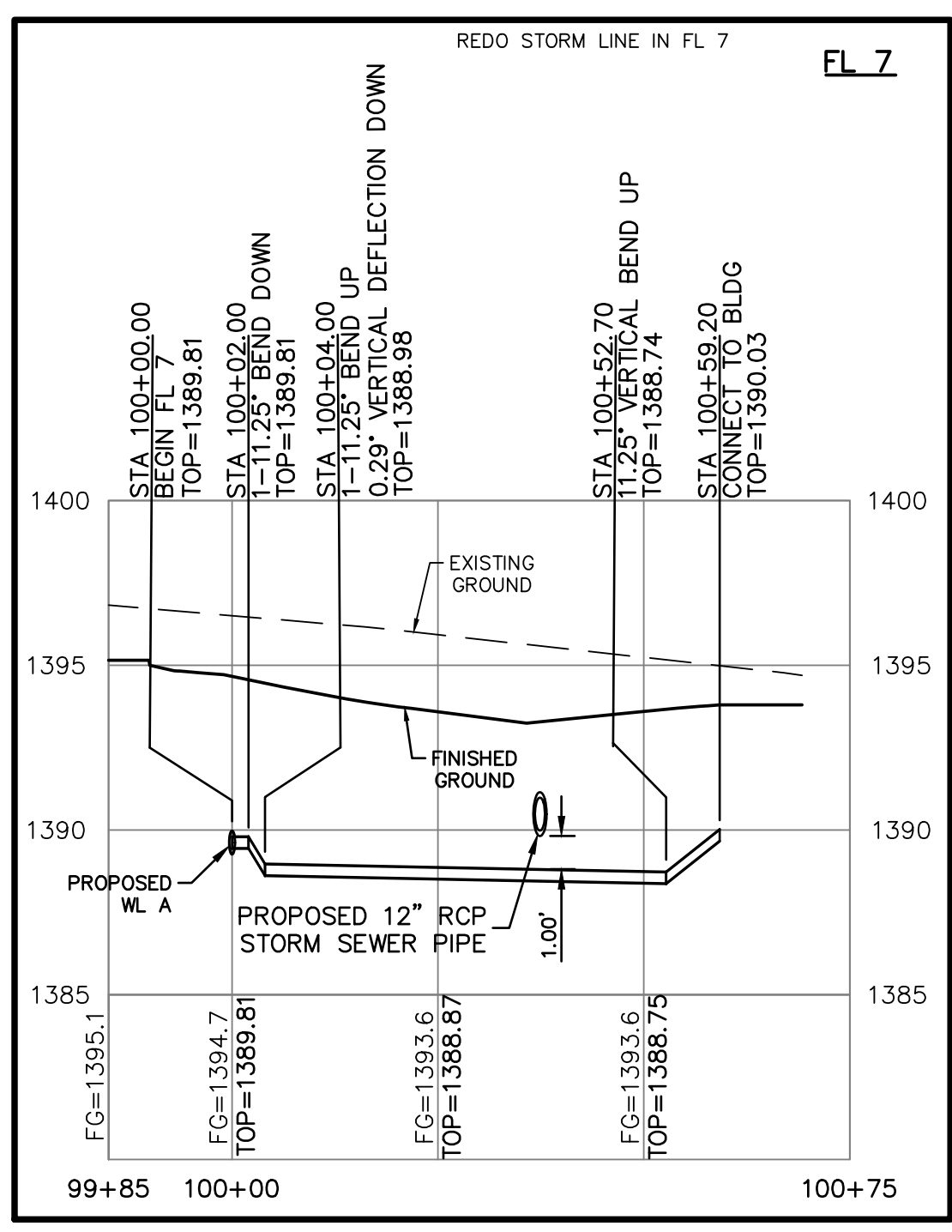
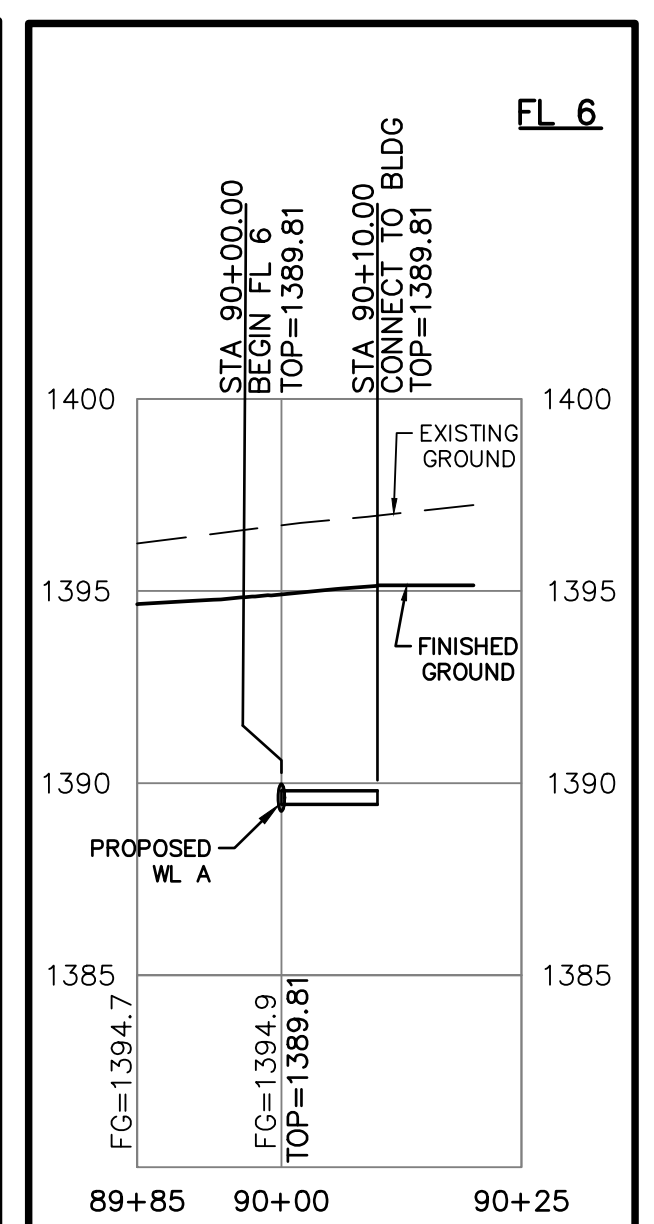
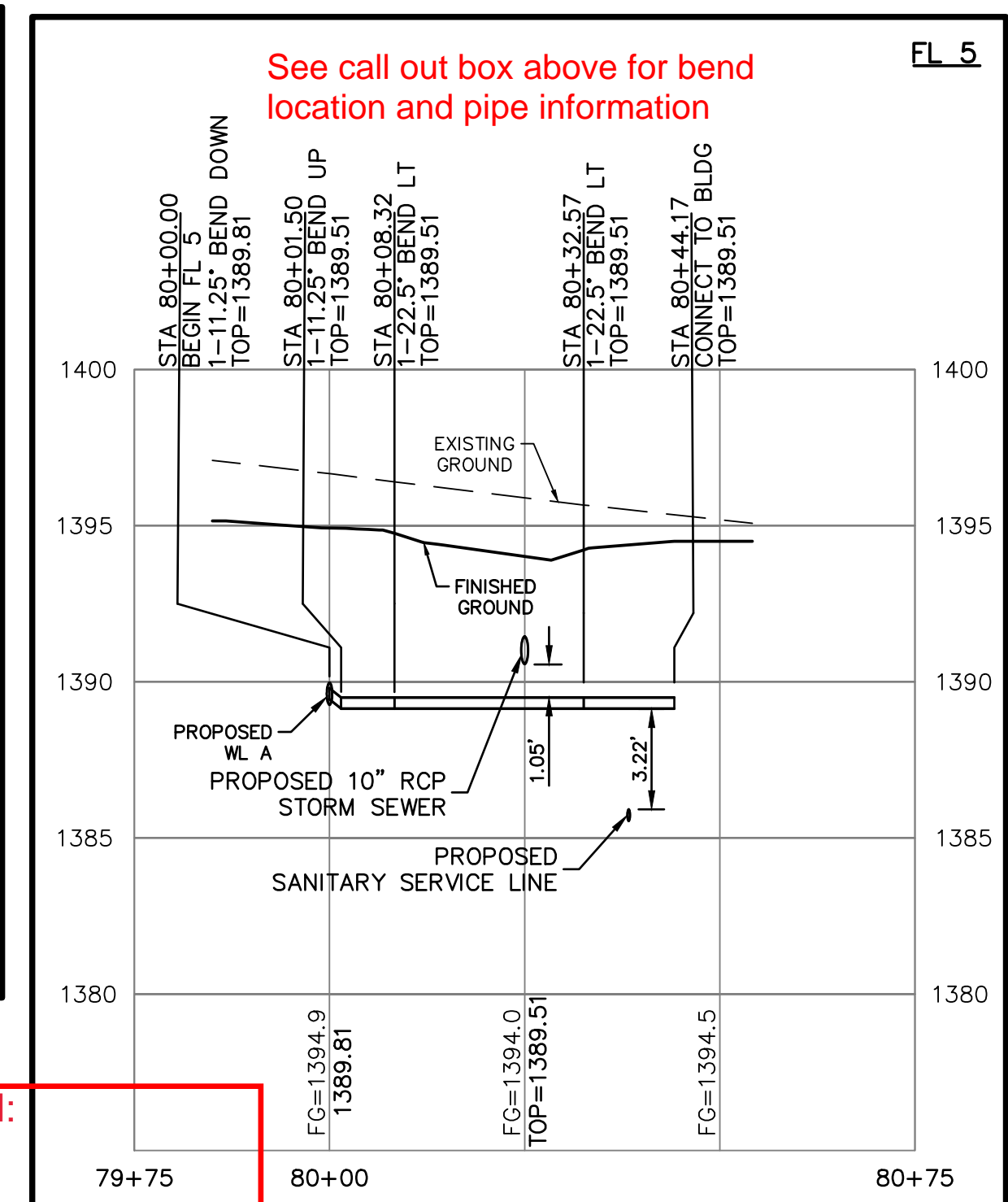
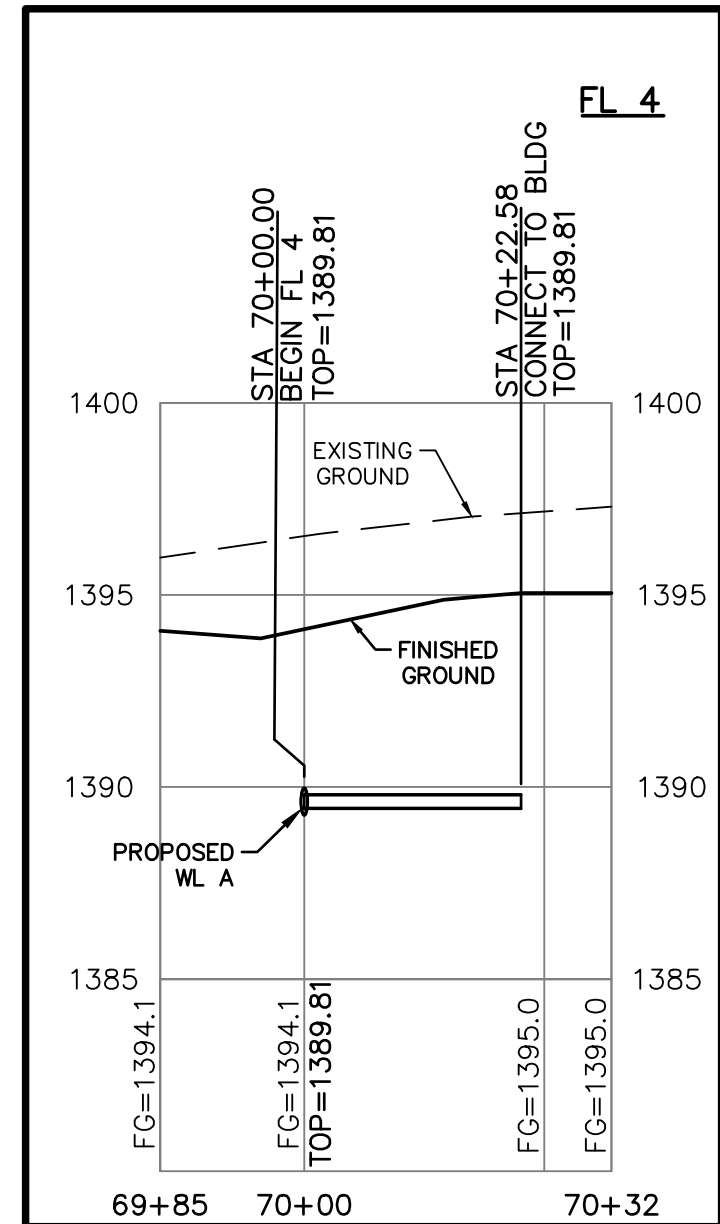
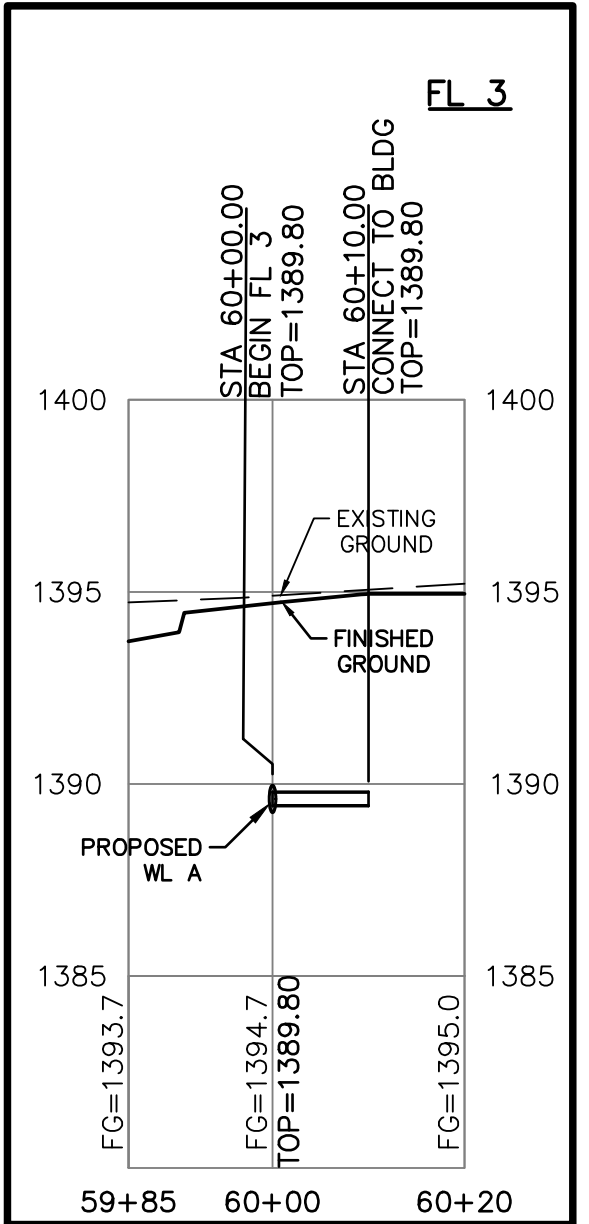
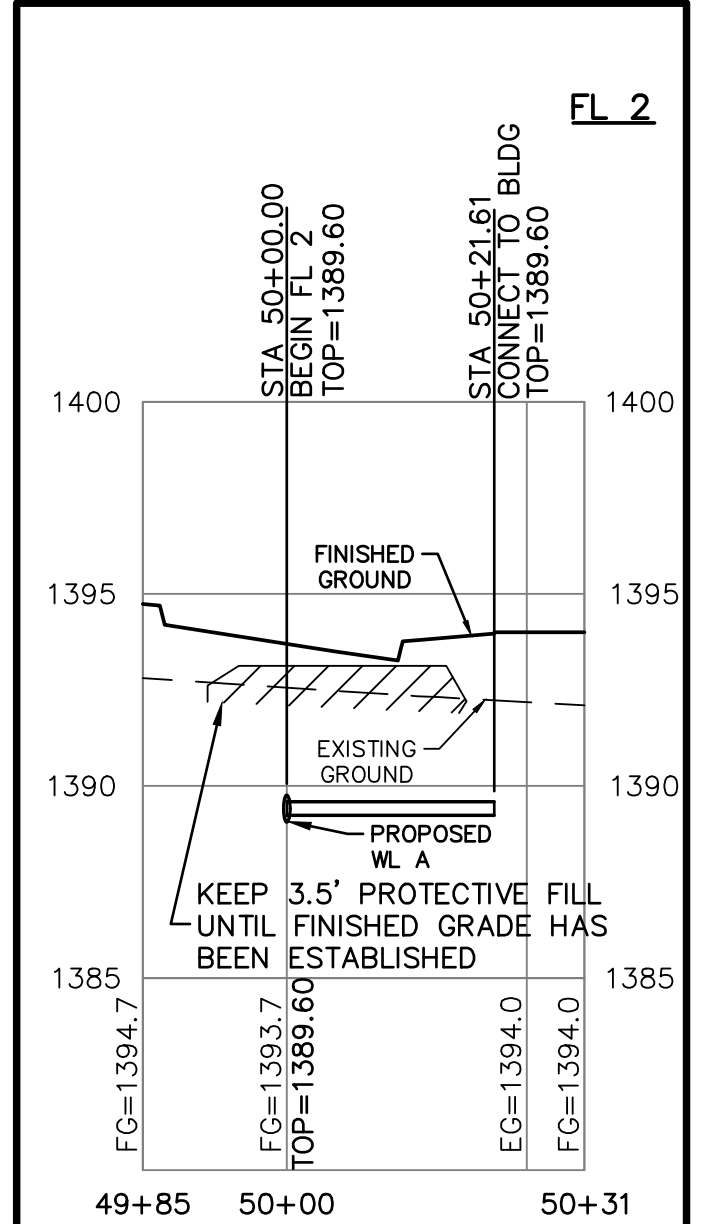
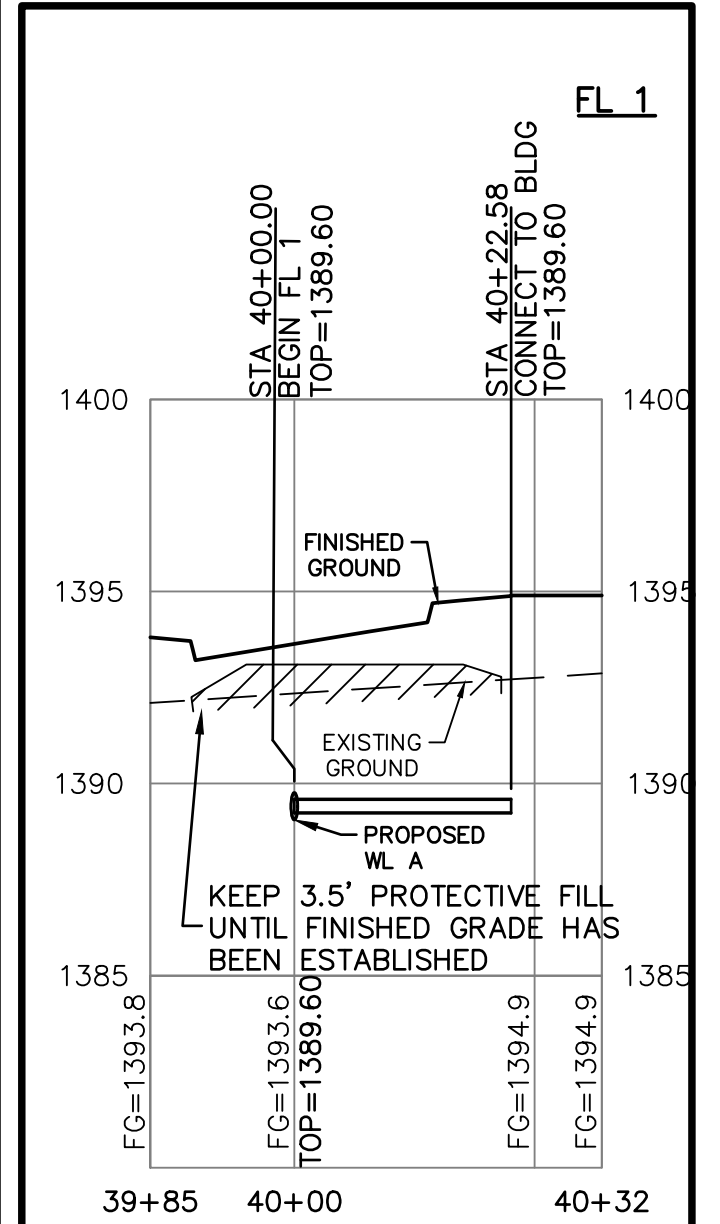


**TEE, VALVE, 4' OF DICL, 21/2 BEND, 28\"/>**



**AS BUILTS**

**KEMILLER ENGINEERING PA**  
 117 E. Lewis,  
 Wichita, KS 67202 (316)264-0242



**CENTER OF PINECREST AND LOOMAN:**

- 597' South & 23' East to tee
- 597' South & 241/2' East to tapping valve
- 597' South & 47' East to Center of Vault
- 619' South & 177.3' East to Line Valve
- 619' South & 180' East to Fire Hydrant Valve
- 619' South & 180' East then 4' North to Fire Hydrant
- 619' South & 420' East to Line Valve
- 619' South & 423.5' East to Fire Hydrant Valve
- 619' South & 423.5' East then 14.8' North to Fire Hydrant
- 619' South & 553.5' East to Line Valve
- 619' South & 573.9' East to Blow-off

**LEGEND**

FL FIRE SERVICE LINE

WL WATER LINE

**NOTES:**

ALL FIRE SERVICES NEED TO HAVE INDIVIDUAL BACKFLOW PROTECTION ON EACH SERVICE LINE TO BE LOCATED INSIDE RESPECTIVE MECHANICAL ROOMS.

ALL WATER LINES MUST MAINTAIN A MINIMUM 42 INCHES OF COVER TO STAY BELOW THE FROST LINE.

THE COORDINATES PROVIDED IN THESE PLANS ARE FOR INFORMATION AND CHECKING PURPOSES ONLY. IT IS THE CONTRACTOR'S RESPONSIBILITY TO CALCULATE CONSTRUCTION STAKING COORDINATES ACCORDING TO THE DIMENSIONS SHOWN ON THESE PLANS. CONTRACTOR SHALL VERIFY THE ACCURACY OF THE COORDINATES SHOWN IN THE TABLE HEREON BEFORE CONSTRUCTION.

THIS PLAN SHEET IS PART OF AN OVERALL KAW VALLEY ENGINEERING PLAN SET FOR THE SPECIFIC IMPROVEMENTS CONTEMPLATED THEREIN. AS SUCH, THE INFORMATION REFLECTED HEREIN SHOULD ONLY BE INTERPRETED WITHIN THE CONTEXT OF THE COMPLETE PLAN SET.

|         |                 |
|---------|-----------------|
| SRB     | CHK             |
| CS      | DSN             |
| EAM     | REV             |
| DATE    | DESCRIPTION     |
| 2/22/23 | INITIAL RELEASE |
| 0       | REV             |
| 03      | 0               |

SHAWN R. BRYAN  
 ENGINEER  
 KS # 17899

**KAW VALLEY ENGINEERING**  
 KAW VALLEY ENGINEERING, INC. IS AUTHORIZED TO OFFER ENGINEERING SERVICES BY KANSAS STATE CERTIFICATE OF AUTHORIZATION # E-113. EXPIRES 12/31/22

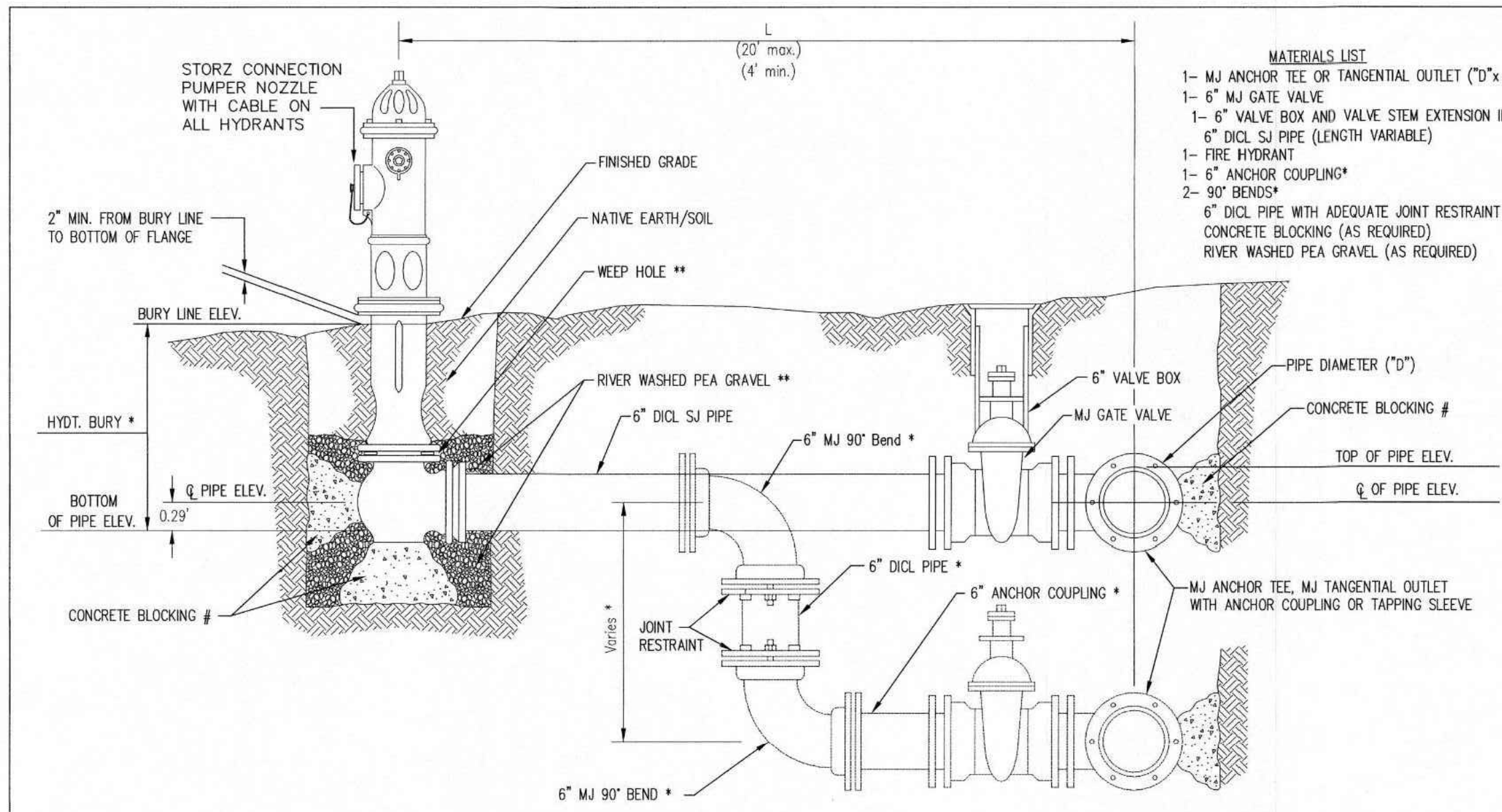
**SPECTRA STUDENT LIVING**  
 21ST STREET & PINECREST AVE  
 WICHITA, KANSAS

**FIRE SERVICE PLAN & PROFILE**

PROJ. NO. G21\_2066  
 DESIGNER EKM DRAWN BY CS  
 CFN 2066WPP  
 SHEET 03 REV 0







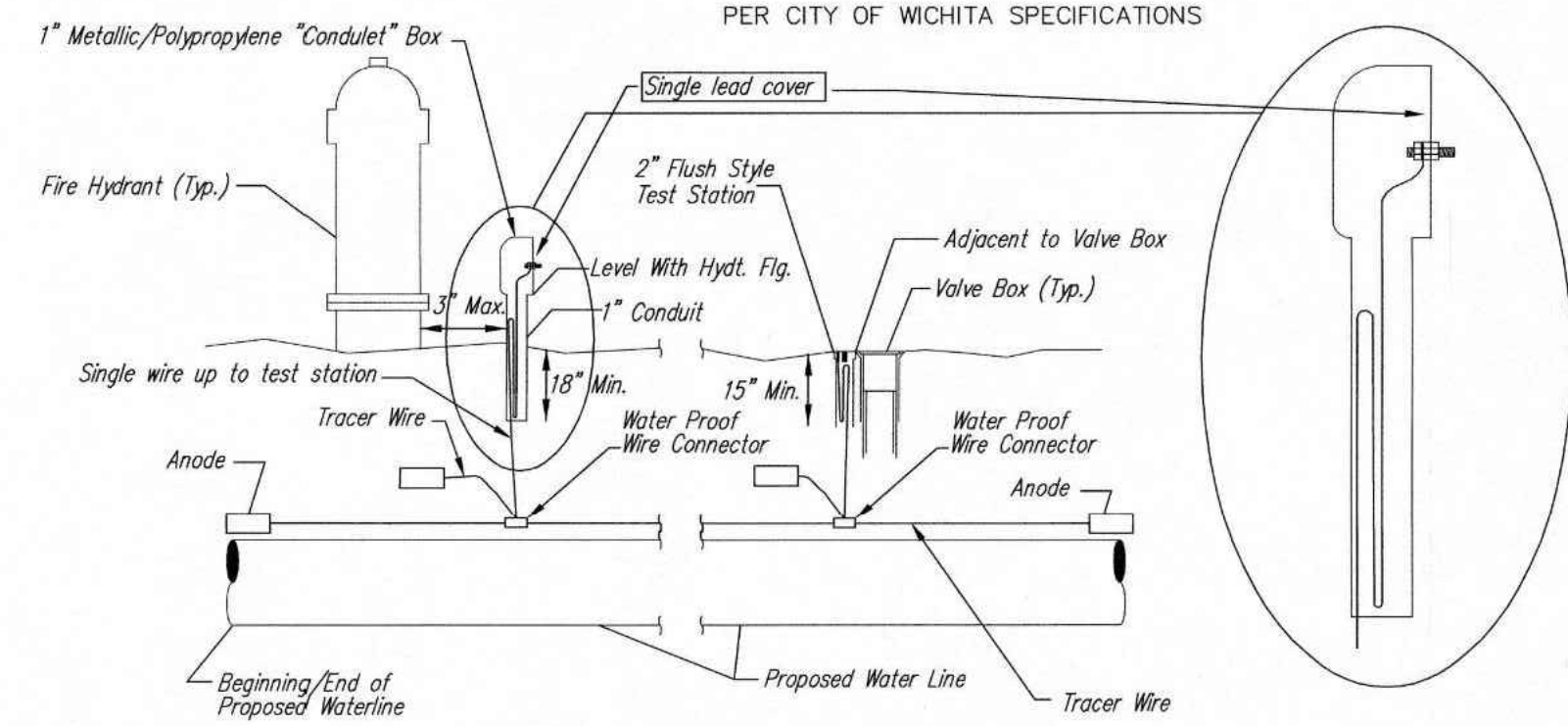
- MATERIALS LIST**
- 1- MJ ANCHOR TEE OR TANGENTIAL OUTLET ("D"x 6")
  - 1- 6" MJ GATE VALVE
  - 1- 6" VALVE BOX AND VALVE STEM EXTENSION IF REQUIRED \*
  - 6" DI CL SJ PIPE (LENGTH VARIABLE)
  - 1- FIRE HYDRANT
  - 1- 6" ANCHOR COUPLING\*
  - 2- 90° BENDS\*
  - 6" DI CL PIPE WITH ADEQUATE JOINT RESTRAINT \*
  - CONCRETE BLOCKING (AS REQUIRED)
  - RIVER WASHED PEA GRAVEL (AS REQUIRED)

\* IF THE REQUIRED HYDRANT BURY IS IN EXCESS OF 5', BUT LESS THAN 7', CONTRACTOR SHALL USE STANDARD 5' HYDRANT BURY AND HYDRANT BARREL EXTENSIONS AS NECESSARY. IF THE REQUIRED HYDRANT BURY IS GREATER THAN 7', CONTRACTOR SHALL USE 5' HYDRANT BURY, 2-MJ 90° BENDS, 6" ANCHOR COUPLING AND 6" DI CL PIPE AS NECESSARY FOR VERTICAL ADJUSTMENT. THE CONTRACTOR SHALL PROVIDE ADEQUATE THRUST BLOCKING AT HYDRANT AND ME GALUGS, OR SIMILAR RESTRAINT BETWEEN 90° BENDS TO SECURE ALL FITTINGS DURING TESTING AND OPERATION. THE CONTRACTOR SHALL PROVIDE A VALVE STEM EXTENSION PER DETAIL THIS SHEET.

\*\* CAUTION: WEEP HOLES TO BE KEPT CLEAR DURING CONSTRUCTION AND BACKFILL. CONCRETE FOR THRUST BLOCKING SHALL NOT OBSTRUCT WEEP HOLES. PLACE 1 CUBIC FOOT OF RIVER WASHED PEA GRAVEL AROUND EACH WEEP HOLE.

# CONCRETE THRUST BLOCKING SHALL BE KEPT CLEAR OF BOLTS, NUTS, AND MJ ACCESSORIES.

**FIRE HYDRANT ASSEMBLY**  
PER CITY OF WICHITA SPECIFICATIONS



**TRACER WIRE**  
Conductive type pipe locator/tracer wire shall be installed to locate all waterline pipe regardless of pipe material. The wire shall extend the entire length of the proposed pipe. The wire shall be taped to the waterline and pulled with the pipe. A waterproof connector shall be used at splice locations. A complete list of approved tracer wire and waterproof connectors can be found on the City of Wichita's website at [www.wichita.gov](http://www.wichita.gov).

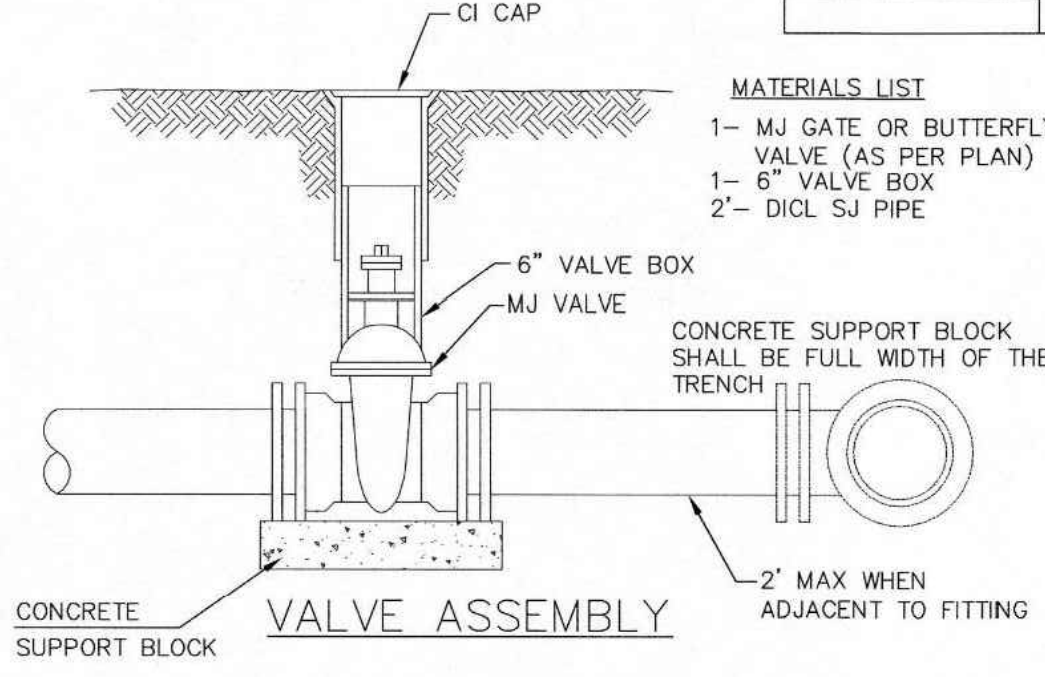
**WIRE**  
The tracer wire shall be Blue No. 12 AWG CCS with 45 mil HDPE insulation. To allow for grade adjustment, a minimum of 12" of excess wire shall be coiled at the bottom of the test station for all wires. Wire connectors shall be installed per manufacturer recommendations. Contractor shall attach wire being installed with proposed water main to any tracer wire installed with adjacent waterline projects.

**TEST STATIONS**  
The test station for fire hydrant application shall be a 1" "conduit" style station as manufactured by AGRA Industries with a removable solid cover having a single lead extending from the face or approved equal. The "conduit" style test station shall be attached to a 1" rigid galvanized conduit with a minimum length of 36" and plastic end bushing. The flush style shall have the word "WATER" stamped or molded into the lid. The test station for valve applications shall be a 2" flush style test station with wire connector on lid. Model # 12PH7B1LP Handley Industries or CD14\*TP SnakePit as manufactured by Copperhead Industries or approved equal. The flush style shall have the word "WATER" stamped or molded into the lid. All test stations shall be manufactured using molded blue taps or sufficiently coated with blue enamel paint. The tracer wire and the anode wire shall be installed to allow 12" of wire within the test station. The location of all test stations shall be recorded, and shown in the as-built drawings. Flush style test stations shall not be installed in pavement or sidewalk unless approved by the Engineer. Contractor shall extend tracer wire & move flush mount test station to nearest location out of pavement or sidewalk.

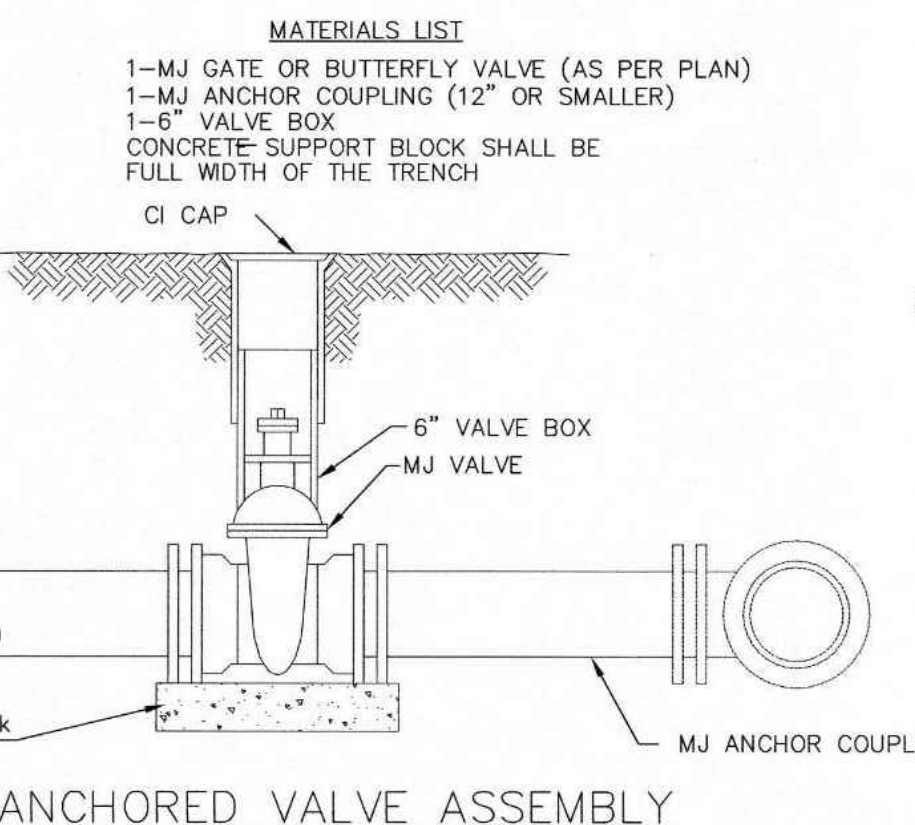
**ANODES**  
The anodes shall be 3 lb. bare zinc or magnesium. The anodes shall be buried at the same elevation as the waterline at each test station. The anodes shall be connected to 12 AWG CCS which shall be extended to the test station.

**TRACER WIRE DETAIL**  
COST IS SUBSIDIARY TO PIPE INSTALLATION

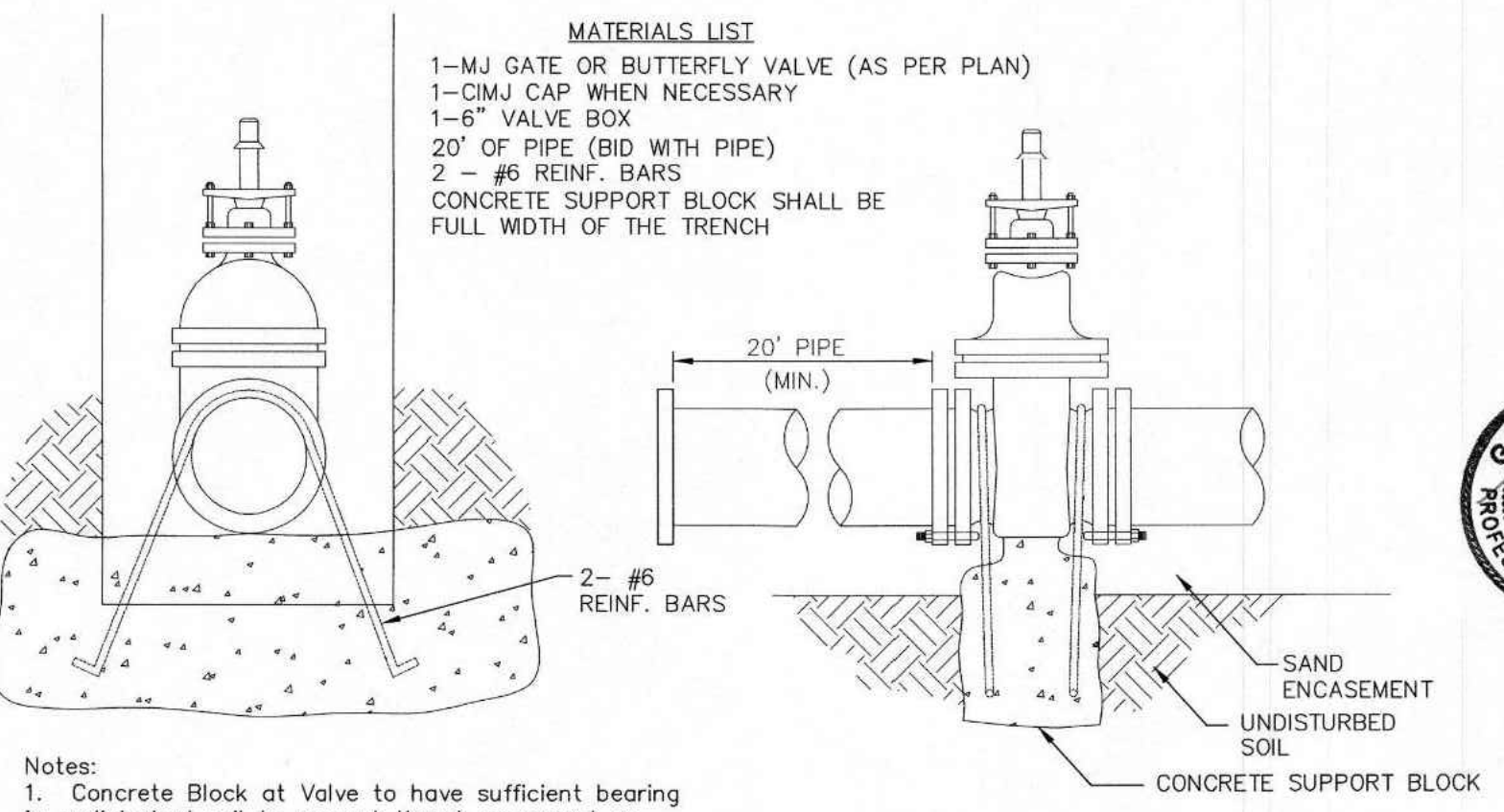
| FIRE HYDRANTS REQUIRED |                     |                       |                             |                                |
|------------------------|---------------------|-----------------------|-----------------------------|--------------------------------|
| STATION                | BURY LINE ELEVATION | TOP OF PIPE ELEVATION | FIRE HYDRANT BURY REQUIRED* | VALVE STEM EXT. REQUIRED (ft)* |
| 11+61.96               | 1394.55             | 1389.96               | 5.23'                       | 1'                             |
| 14+04.77               | 1393.86             | 1389.98               | 4.53'                       |                                |
|                        |                     |                       |                             |                                |
|                        |                     |                       |                             |                                |
|                        |                     |                       |                             |                                |
|                        |                     |                       |                             |                                |
|                        |                     |                       |                             |                                |
|                        |                     |                       |                             |                                |
|                        |                     |                       |                             |                                |
|                        |                     |                       |                             |                                |



- MATERIALS LIST**
- 1- MJ GATE OR BUTTERFLY VALVE (AS PER PLAN)
  - 1- 6" VALVE BOX
  - 2"- DI CL SJ PIPE



- MATERIALS LIST**
- 1- MJ GATE OR BUTTERFLY VALVE (AS PER PLAN)
  - 1- CIMJ CAP WHEN NECESSARY
  - 1- 6" VALVE BOX
  - 20' OF PIPE (BID WITH PIPE)
  - 2- #6 REINF. BARS
  - CONCRETE SUPPORT BLOCK SHALL BE FULL WIDTH OF THE TRENCH

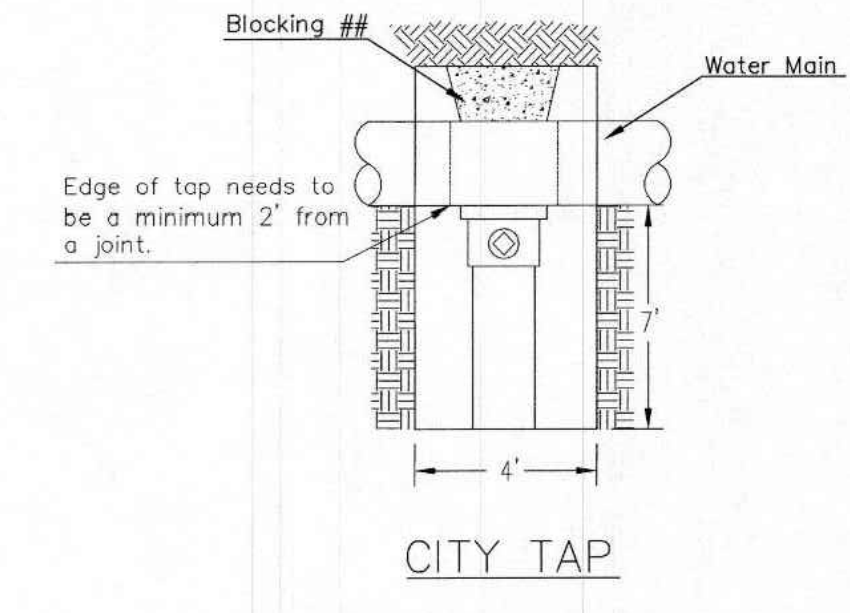


**Notes:**

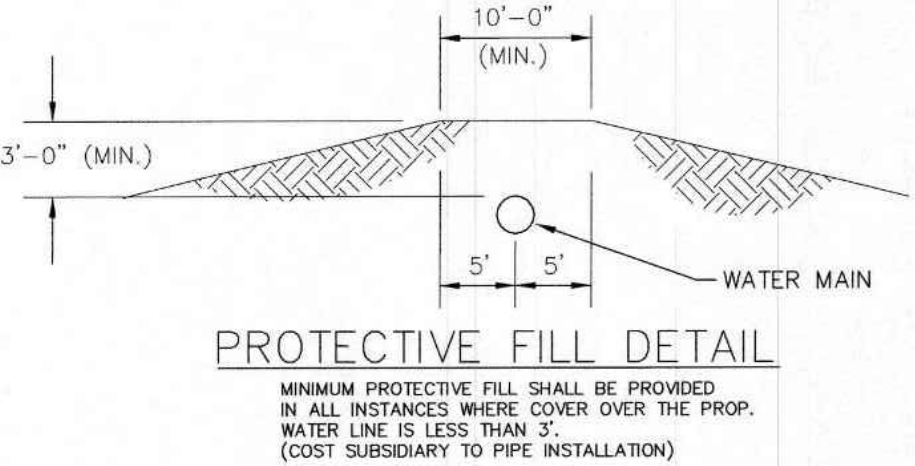
- Concrete Block at Valve to have sufficient bearing in undisturbed soil to prevent thrust movement as shown in table at right. Field Engineer to determine thrust loading of undisturbed soil and final size of thrust block.
- The thrust block shall be constructed such that bolts, nuts, and other MJ accessories are kept clear of concrete.
- All valves at dead ends and at other locations as called out on the plans shall be blocked as shown here.

| THRUST AT VALVES |                       |
|------------------|-----------------------|
| VALVE            | THRUST AT 150 #/sq ft |
| 4"               | 1809 lbs.             |
| 6"               | 4245 lbs.             |
| 8"               | 7540 lbs.             |
| 12"              | 16985 lbs.            |

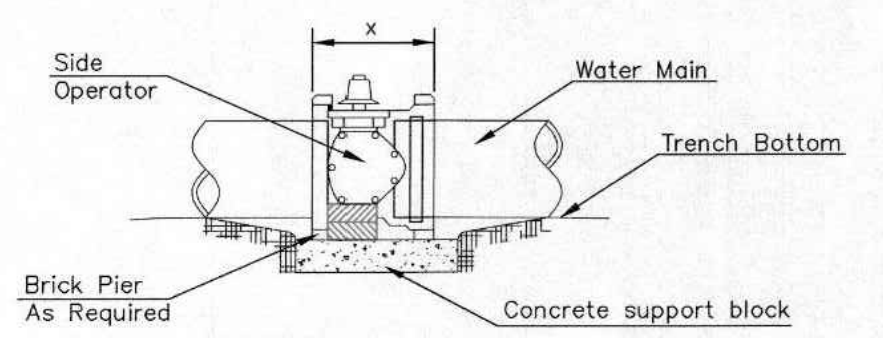
**ANCHORED VALVE ASSEMBLY, SPECIAL**



## When the City of Wichita makes tap, blocking is to be done by Contractor

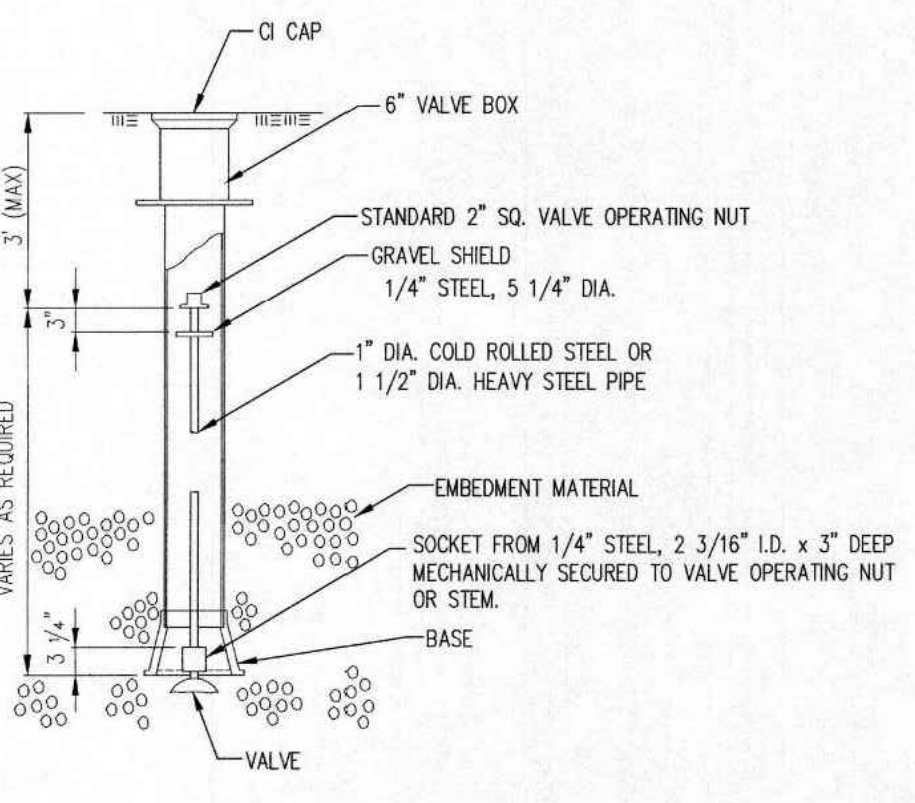


**PROTECTIVE FILL DETAIL**  
MINIMUM PROTECTIVE FILL SHALL BE PROVIDED IN ALL INSTANCES WHERE COVER OVER THE PROP. WATER LINE IS LESS THAN 3". (COST SUBSIDIARY TO PIPE INSTALLATION)



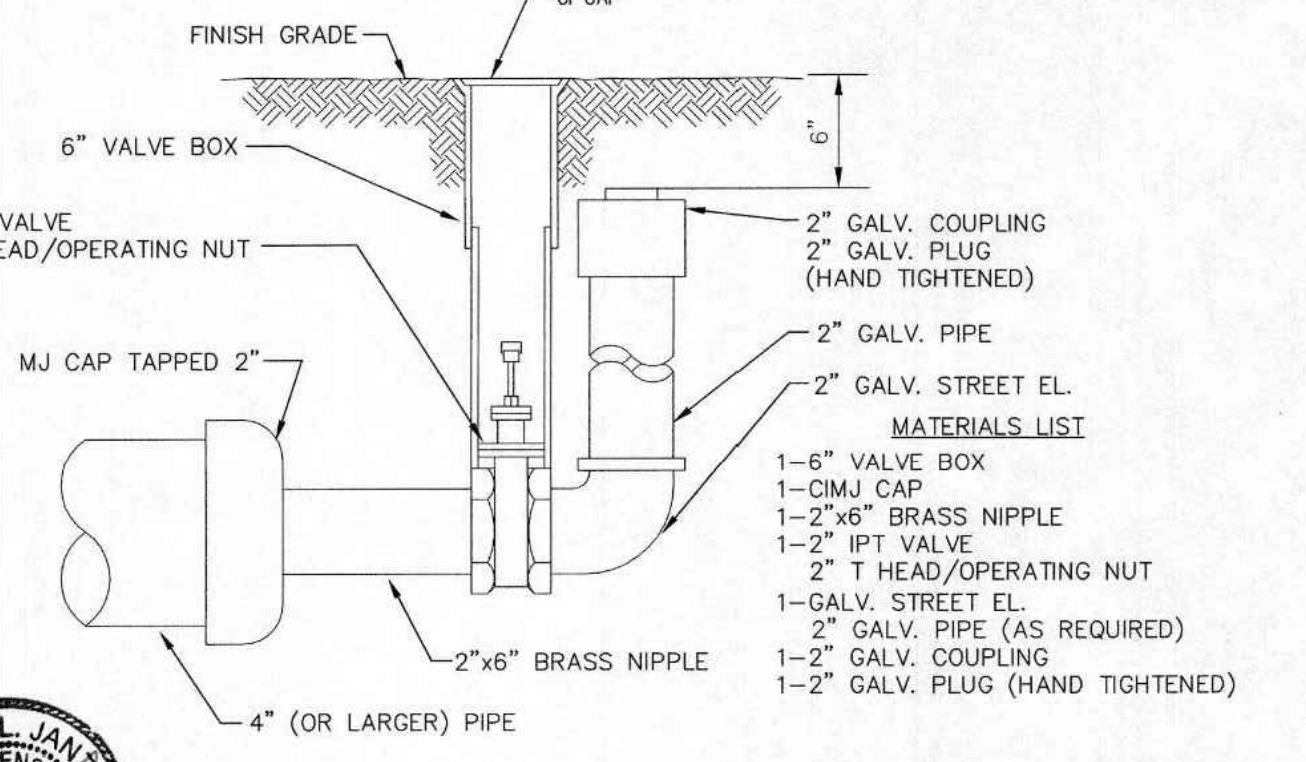
- NOTES**
- This detail covers Butterfly Valve installation, inclusive, regardless of type of pipe or joint used. 24" and larger lines to be detailed on plans.
  - 6" Valve Box and Cover required per City of Wichita Std. Specifications.
  - Conc. Support Block to be full width of trench.

**CONCRETE SUPPORT BLOCKING FOR BUTTERFLY VALVE INSTALLATION**



**VALVE STEM EXTENSION DETAIL**

NOTE: ONE VALVE STEM EXTENSION FOR EACH VALVE BURIED GREATER THAN 5'.



**2" BLOWOFF ASSEMBLY**

STANDARD WATER ASSEMBLY DETAIL

CITY ENGINEER  
**GARY JANZEN, P.E.**

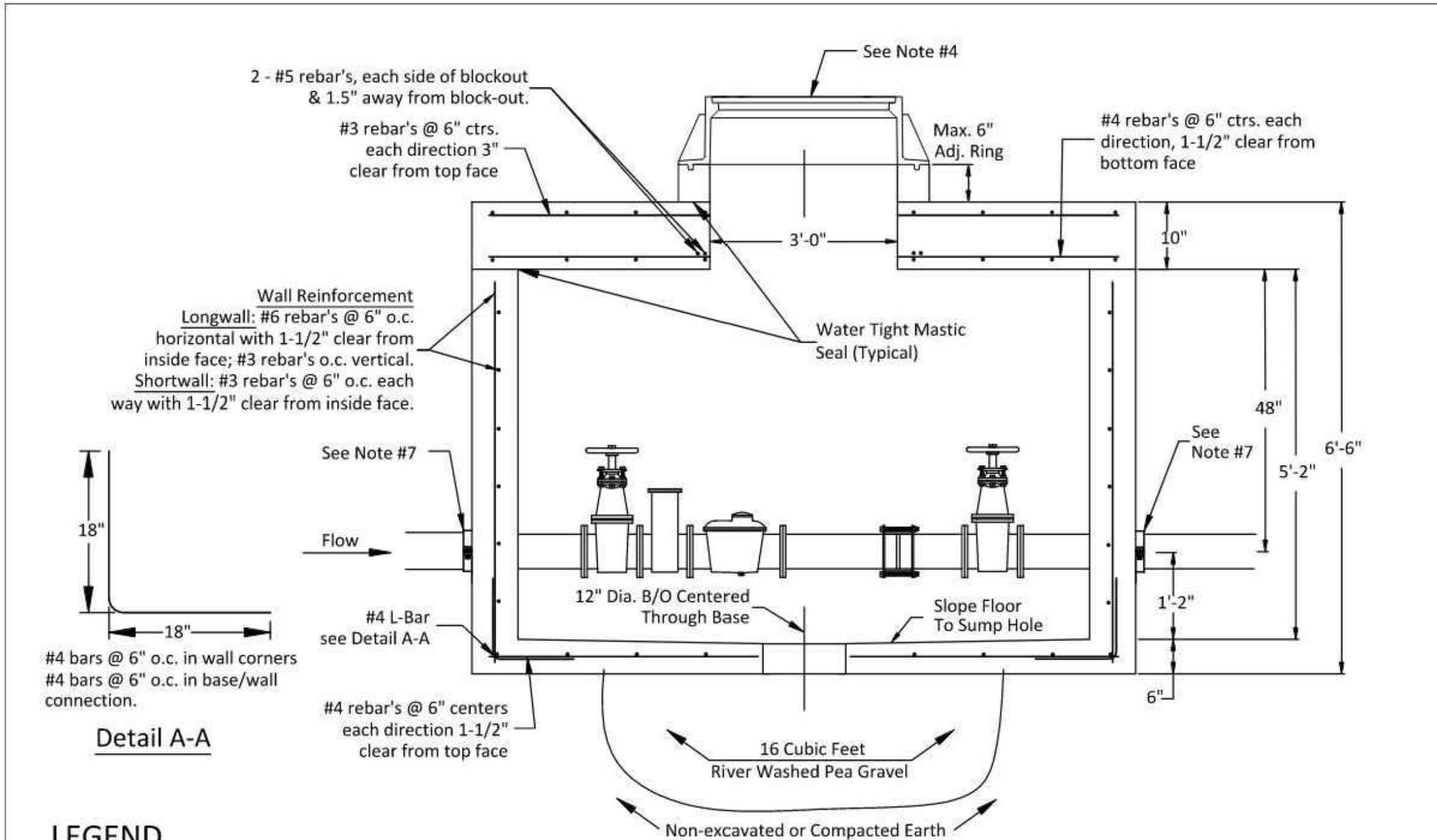
PROJECT NUMBER: \_\_\_\_\_ OCA NUMBER: \_\_\_\_\_ DATE: \_\_\_\_\_

CITY ENGINEER'S OFFICE  
CITY HALL - SEVENTH FLOOR  
455 NORTH MAIN STREET  
WICHITA, KANSAS 67202-1620  
(316) 268-4501

SHEET \_\_\_\_\_

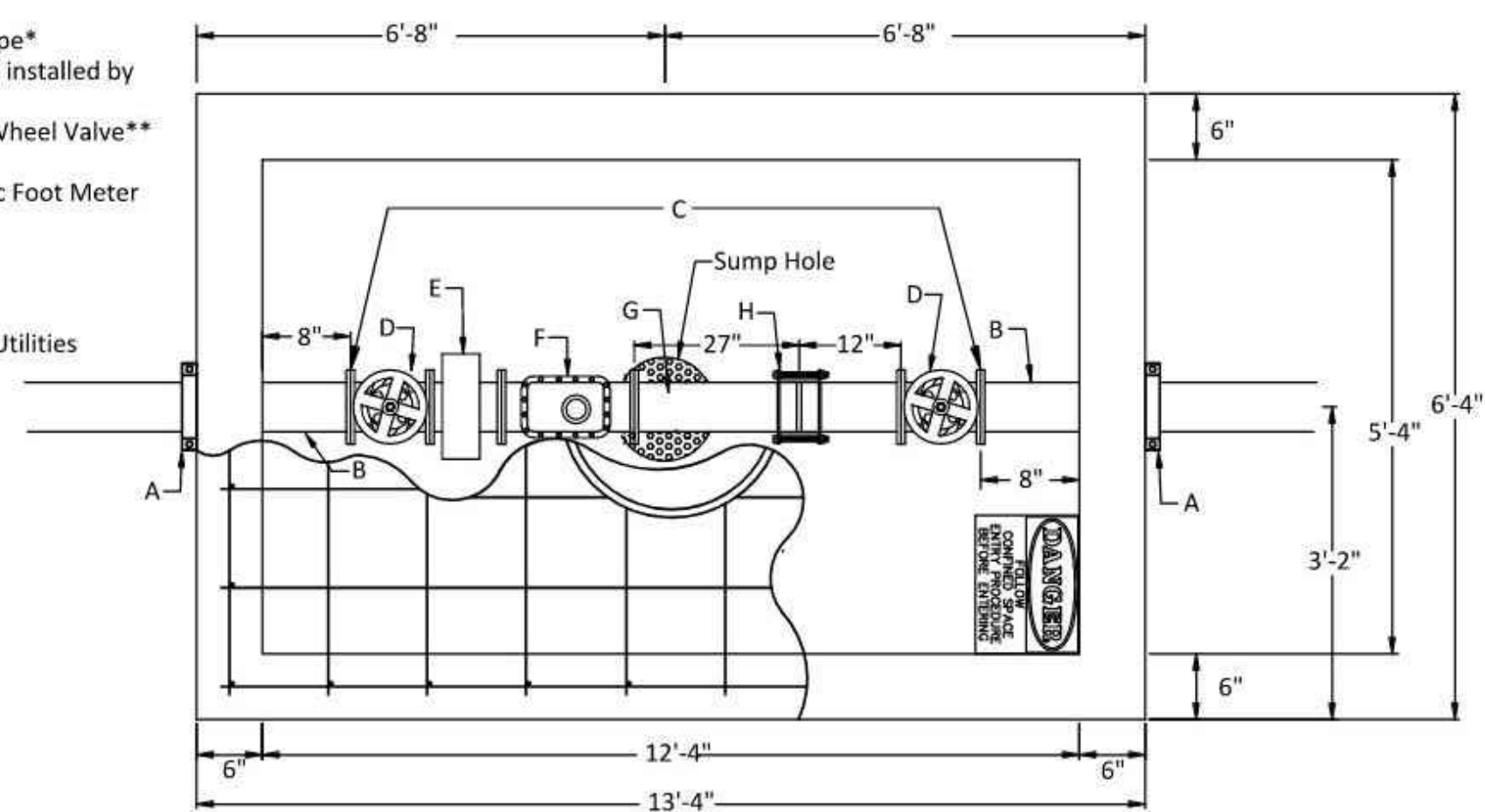
|  |             |
|--|-------------|
| SRB  | CHK         |
| CS   | DWN         |
| EAM  | DSN         |
| INITIAL RELEASE  | DESCRIPTION |
| 2/22/23  | REV DATE    |
| 0  | REV         |
|  |             |
| <p>SHAWN R. BRYAN<br/>ENGINEER<br/>KS # 17899</p>  |             |
| <p>200 N. EMPORIA, SUITE 100<br/>WICHITA, KANSAS 67202<br/>PH. (316) 440-4304   FAX (316) 440-4309<br/><a href="http://www.kaveg.com">www.kaveg.com</a>   <a href="mailto:info@kaveg.com">info@kaveg.com</a></p> <p><b>KAW VALLEY ENGINEERING</b><br/>KAW VALLEY ENGINEERING, INC., IS AUTHORIZED TO OFFER ENGINEERING SERVICES BY KANSAS STATE CERTIFICATE OF AUTHORIZATION # E-113. EXPIRES 12/31/22</p> |             |
| <p><b>SPECTRA STUDENT LIVING</b><br/>21ST STREET &amp; PINECREST AVE<br/>WICHITA, KANSAS</p>   |             |
| <p>WATER ASSEMBLY DETAIL</p>   |             |
| PROJ. NO.  | G21_2066    |
| DESIGNER   | EKM         |
| DRAWN BY   | CS          |
| CFN  | 2066WDET    |
| SHEET  | 06          |
| REV  | 0           |

**NOTES:**  
 ALL FIRE SERVICES NEED TO HAVE INDIVIDUAL BACKFLOW PROTECTION ON EACH SERVICE LINE TO BE LOCATED INSIDE RESPECTIVE MECHANICAL ROOMS.  
 PROVIDE A HALLIDAY W2R SERIES OR APPROVED EQUIVALENT FOR SAFE HATCH ACCESS COVER.



**LEGEND**

- A - 8" Mega Lug (See Note 7)\*
- B - Min. 3' Piece of 8" FL x PE DICL Pipe\*
- C - 8" DICL Pipe Spool\* prior to parts installed by Wichita Water Util.
- D - 8" Flange Non-rising Stem Gate Wheel Valve\*\*
- E - Screen Filter\*\*
- F - 8" Badger Recordall II Turbo Cubic Foot Meter with AMR Register\*\*
- G - 8" FL x PE Pipe\*\*
- H - 8" Flex Coupling\*\*
- \* = Contractor Installed
- \*\* = Installed By Wichita Water Utilities



**NOTES:**

1. Inspector from Public work & Utilities to be contacted 24 hours prior to installation of Vault. Contact: 316-219-8928 OR 316-219-8929
2. Any fittings or appurtenances required to achieve proper elevation of pipe through the vault shall be provided by the contractor and appropriately noted on the as-builts submitted by the inspecting engineer. Such fittings shall be a minimum of 2' from the exterior wall of vault.
3. The contractor shall provide an outlet flange connection as shown 8" from the inside wall. Inlet and outlet wall sleeves shall be provided and installed by the contractor and shall be in alignment with one another. The inlet and outlet pipe shall be ductile iron pipe, cement lined, Class 150 per Standard Specifications and shall be continuous through vault and joint no less than 2' from the exterior wall of vault. Flanges of inlet and outlet pipe shall be in proper alignment and bolt pattern shall be rotated in such a way that valves and other fittings shall be in their proper vertical alignment when installed.
4. The manhole ring and lid shall be EJ 1040A/1581E/1581Z Assembly. Where applicable the standard 10" Public Works and Utilities pattern meter reading lid and ring shall be located directly above water meter register. All joints of concrete to concrete or metal to concrete in the construction of the vault shall have a approved water tight mastic joint seal.
5. All valves, meters, assemblies and fitting shall be provided with sufficient concrete or other approved supports to the vault floor.
6. The "Confined Space Warning" sign shall be fastened to the top of all vaults. If necessary for landscaping or site consideration, the sign may be fastened to the vault lid if it does not impede access to the handle. Acceptable materials: Aluminum 73415HH, Plastic 73439HH or S.A. Vinyl 73463HH.
7. For service pipe, the contractor shall install a mega lug, restrained joint, or approved equal on the exterior walls of the vault, which shall be manufactured of ductile iron conforming ASTM A 536-80, heat treated to a minimum hardness of 370 BHN and have a working pressure of a least 250 P.S.I.
8. All meters shall have a electronic read register compatible with the current City of Wichita meter reading system. All detector meters shall be on 5/8 cubic foot Badger meter with ADE register and 25' long Itron cord and plug or approved equal. Gallon meters shall not be accepted.

**8" Domestic Service & meter**  
 NOT TO SCALE

|   |                 |             |
|---|-----------------|-------------|
|   | SRB             | CHK         |
|   | CS              | DWN         |
|   | EAM             | DSN         |
|   | INITIAL RELEASE | DESCRIPTION |
| 0 | 2/22/23         | REV DATE    |



SHAWN R. BRYAN  
 ENGINEER  
 KS # 17899

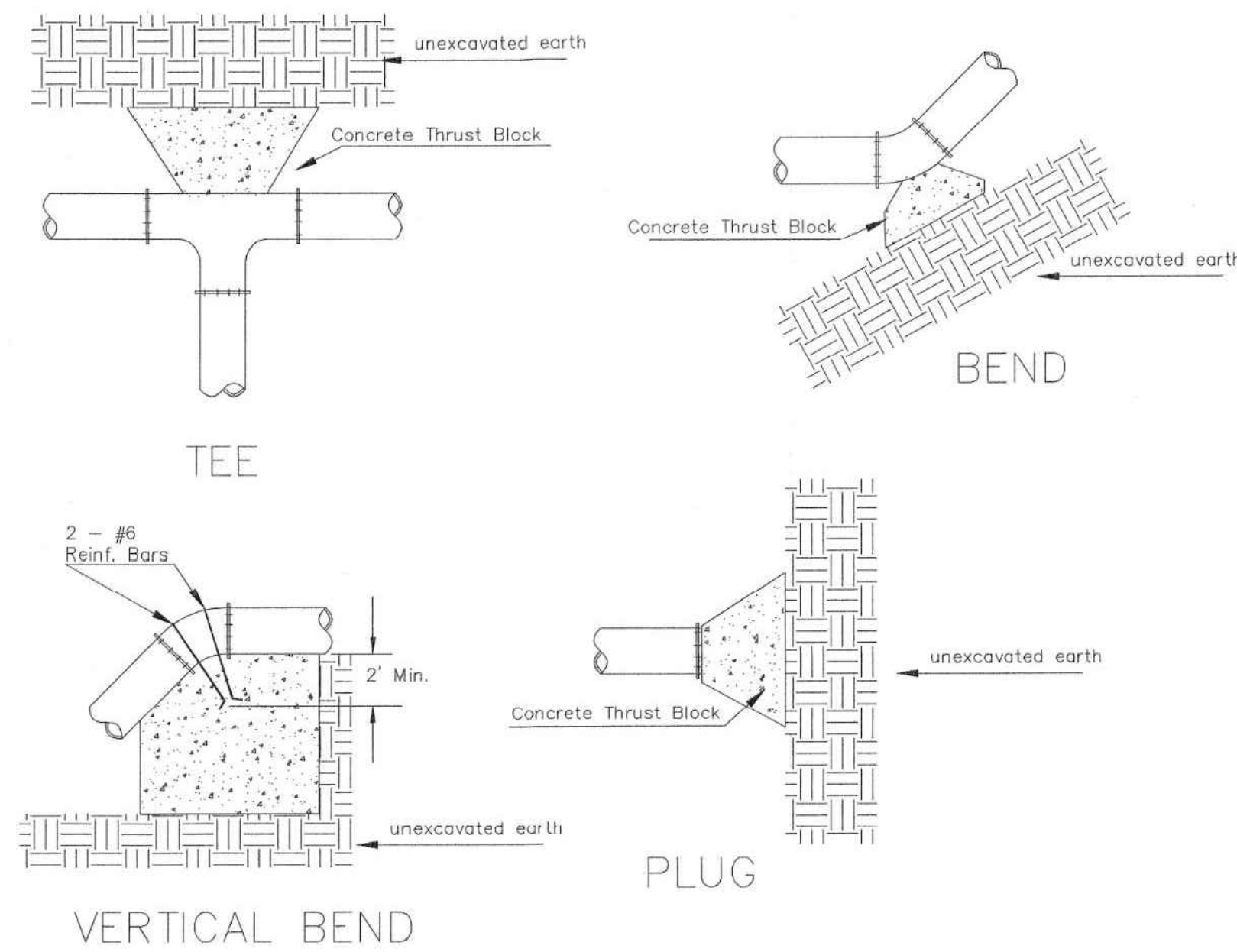
200 N. EMPORIA, SUITE 100  
 WICHITA, KANSAS 67202  
 PH. (316) 440-4304 | FAX (316) 440-4309  
 www.kveeng.com | www.kveeng.com

**KAW VALLEY ENGINEERING**  
 KAW VALLEY ENGINEERING, INC., IS AUTHORIZED TO OFFER ENGINEERING SERVICES BY KANSAS STATE CERTIFICATE OF AUTHORIZATION # E-113. EXPIRES 12/31/22

**SPECTRA STUDENT LIVING**  
 21ST STREET & PINECREST AVE  
 WICHITA, KANSAS

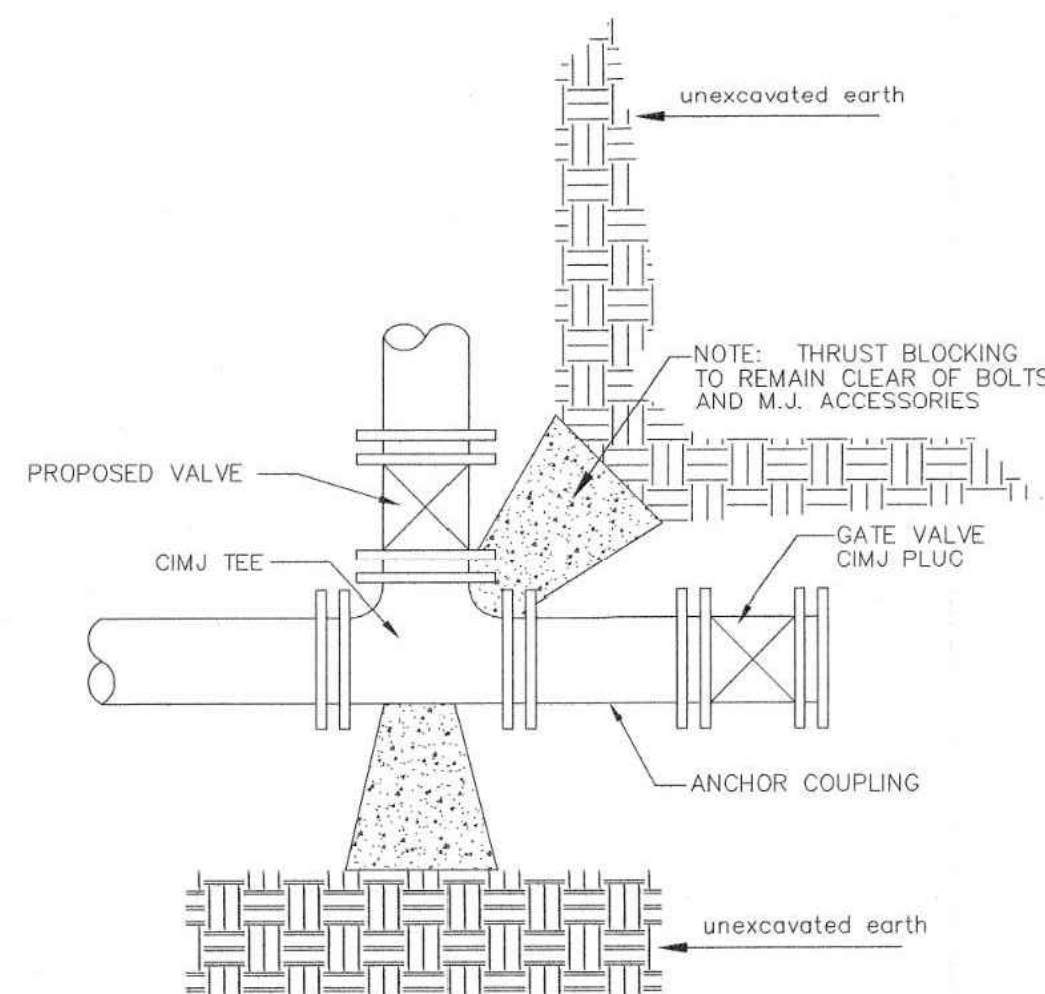
**VAULT & METER ASSY DETAIL**

|           |          |
|-----------|----------|
| PROJ. NO. | G21_2066 |
| DESIGNER  | EKM      |
| DRAWN BY  | CS       |
| CFN       | 2066WDET |
| SHEET     | 08       |
| REV       | 0        |

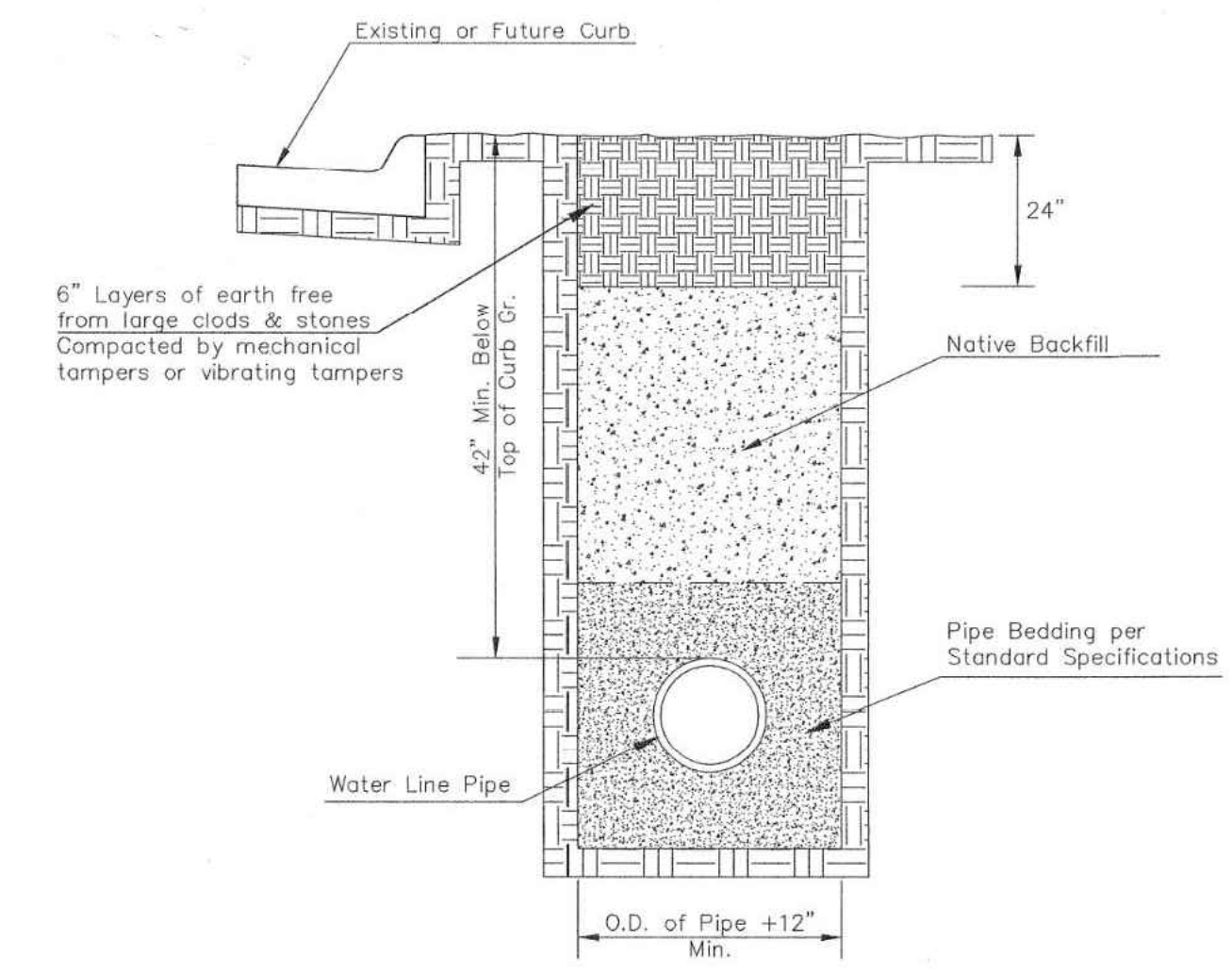


| PIPE SIZE | THRUST AT FITTINGS IN TONS--AT 150#/IN <sup>2</sup> P |      |       |         |         |       |
|-----------|---|------|-------|---------|---------|-------|
|           | PLUG  | 90°  | 45°   | 22 1/2° | 11 1/4° | TEE   |
| 6"        | 2.8   | 3.95 | 2.15  | 1.09    | .55     | 2.8   |
| 8"        | 4.9   | 6.95 | 3.75  | 1.90    | .96     | 4.9   |
| 12"       | 11.4  | 16.1 | 8.75  | 4.45    | 2.25    | 11.4  |
| 16"       | 20.15   | 28.5 | 15.4  | 7.85    | 3.95    | 20.15 |
| 20"       | 31.15   | 44.0 | 23.85 | 12.15   | 6.10    | 31.15 |
| 24"       | 44.55   | 63.0 | 34.1  | 17.4    | 8.75    | 44.55 |

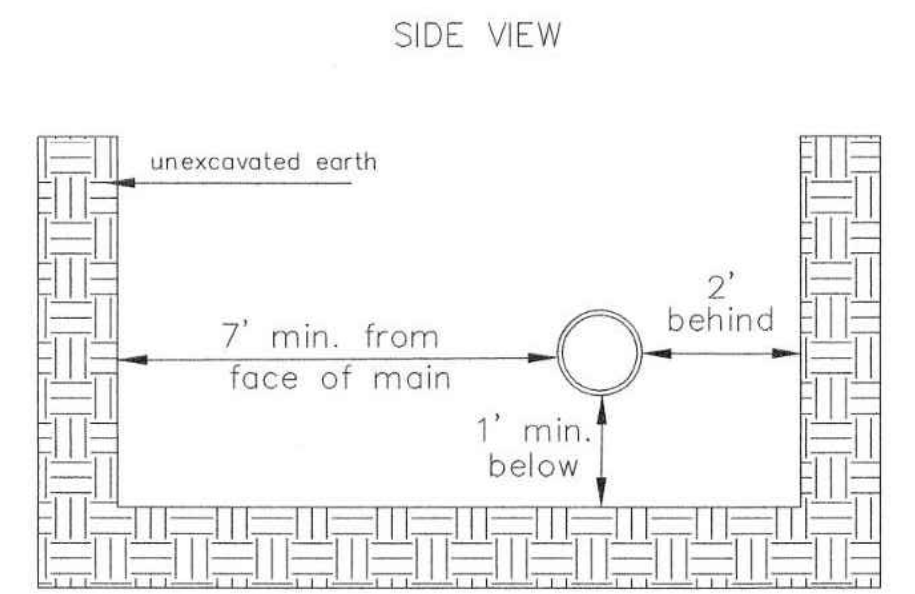
TYPICAL THRUST BLOCKS



\* PLANS GOVERN UNLESS OTHERWISE NOTED ON PLANS

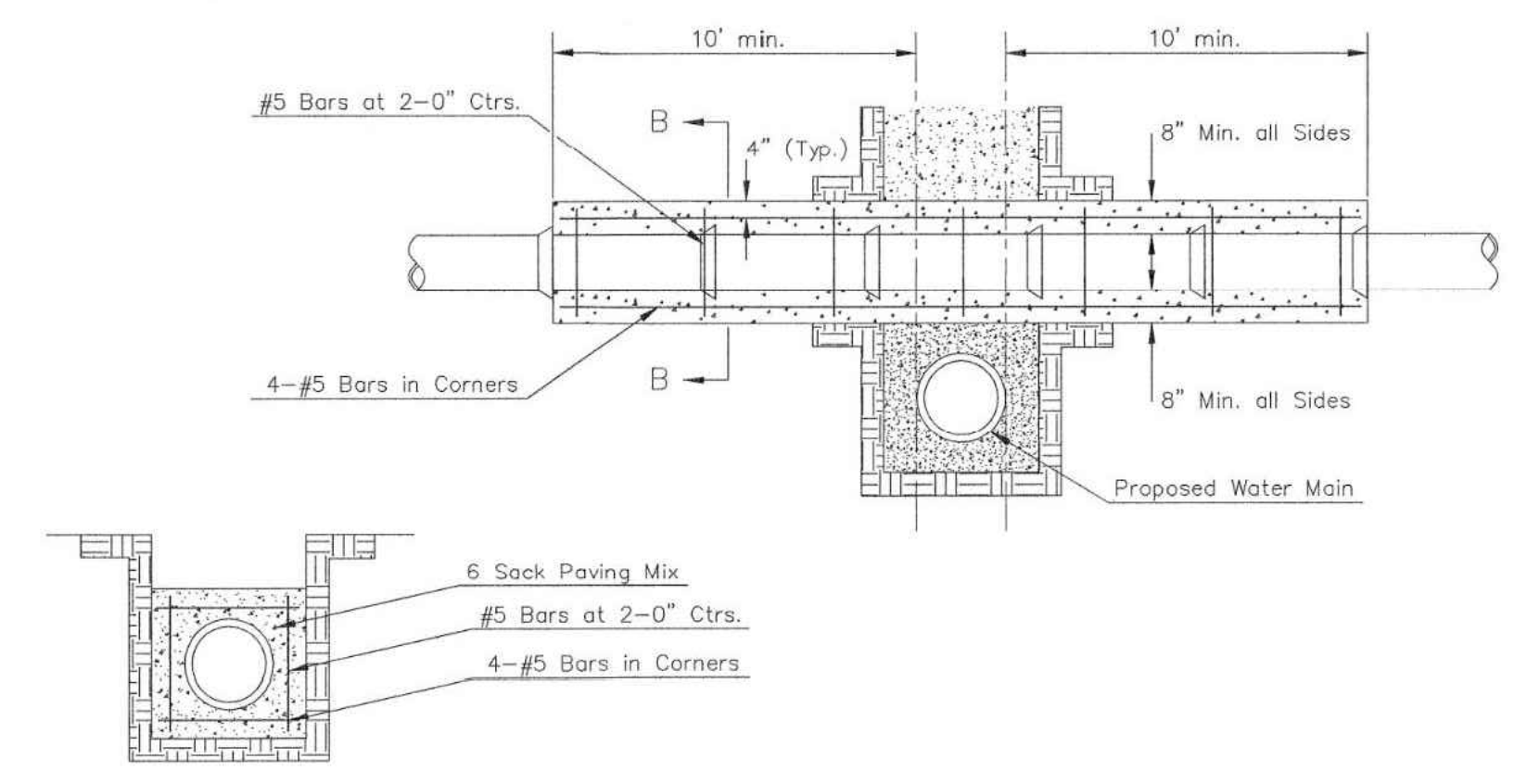


TRENCH COMPACTION IN ROAD RIGHT-OF-WAY



Note: When shoring is required it is to be per The City of Wichita Standard Specifications.

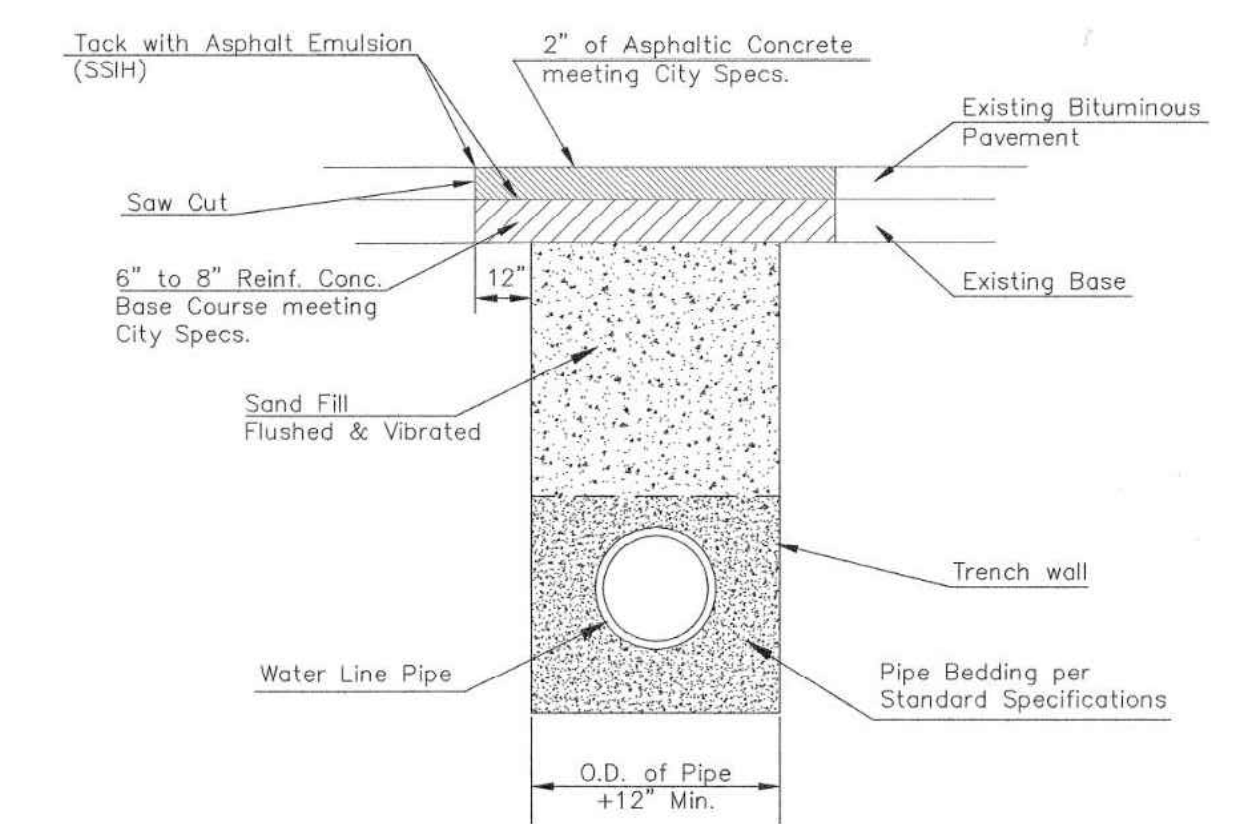
EXCAVATION FOR WET TAP



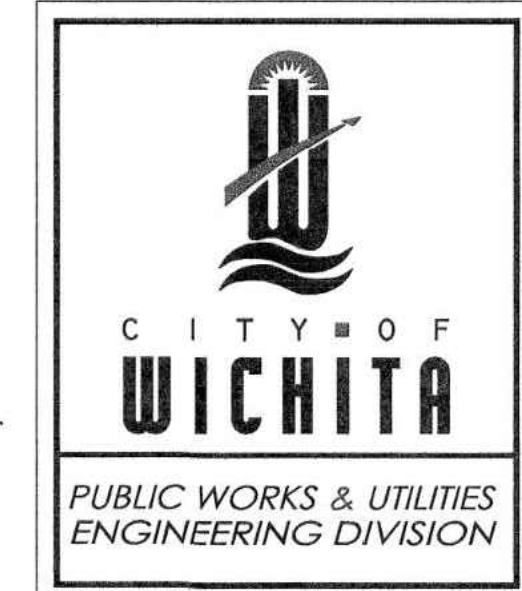
SECTION B-B

REINFORCED CONCRETE ENCASEMENT OF SANITARY SEWER

Note: Encasement to begin and end at a Bell on Sanitary Sewer Pipe.



PAVEMENT REPLACEMENT & TRENCH COMPACTION UNDER EXISTING AND PROPOSED CITY ROADS



|  |            |       |
|--|------------|-------|
| MISCELLANEOUS WATER DETAILS  |            |       |
| CITY ENGINEER GARY JANZEN, P.E.  |            |       |
| PROJECT NUMBER   | OCA NUMBER | DATE  |
| CITY ENGINEER'S OFFICE   |            | SHEET |
| CITY HALL - SEVENTH FLOOR<br>455 NORTH MAIN STREET<br>WICHITA, KANSAS 67202-1620<br>(316) 268-4501 |            |       |

WL-104

|                 |             |
|-----------------|-------------|
| SRB             | CHK         |
| CS              | DWN         |
| EAM             | DSN         |
| INITIAL RELEASE | DESCRIPTION |
| 2/22/23         | REV DATE    |
| 0               | REV         |

SHAWN R. BRYAN  
ENGINEER  
KS # 17899

200 N. EMPORIA, SUITE 100  
WICHITA, KANSAS 67202  
PH. (316) 440-4304 | FAX (316) 440-4309  
www.kawvalleyeng.com | www.kawvalleyeng.com

**KAW VALLEY ENGINEERING**  
KAW VALLEY ENGINEERING, INC., IS AUTHORIZED TO OFFER ENGINEERING SERVICES BY KANSAS STATE CERTIFICATE OF AUTHORIZATION # E-113. EXPIRES 12/31/22

**SPECTRA STUDENT LIVING**  
21ST STREET & PINECREST AVE  
WICHITA, KANSAS

**MISC WATER DETAIL**

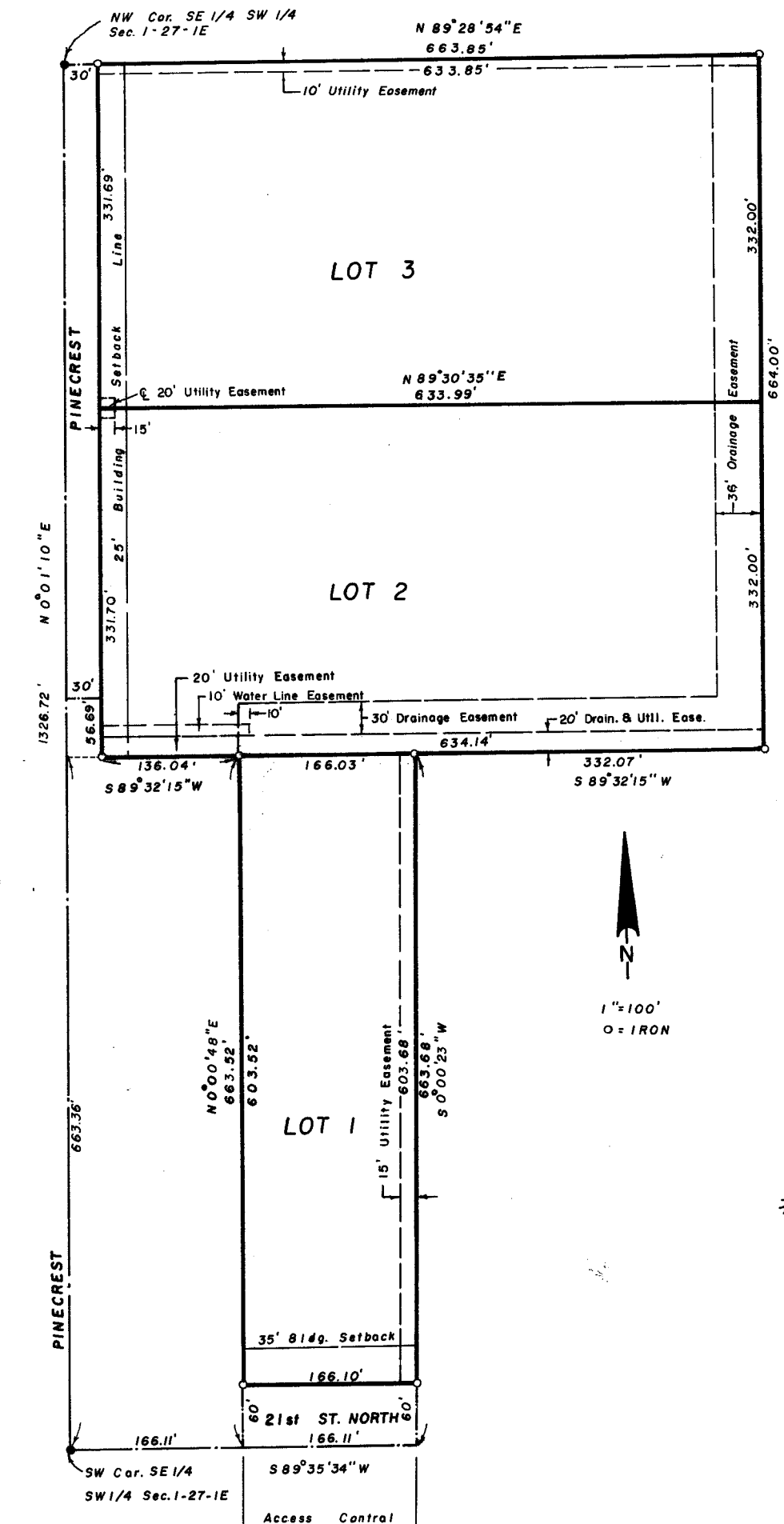
PROJ. NO. G21\_2066  
DESIGNER EKM DRAWN BY CS  
CFN 2066WDET  
SHEET 09 REV 0

1E-1 E-5

1E-1 E-5

# WICHITA LAND ADDITION

WICHITA, SEDGWICK COUNTY, KANSAS

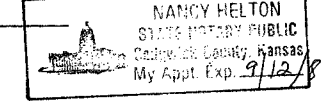


State of Kansas, County of Sedgwick, SS.

The foregoing instrument was acknowledged before me this 1st day of December, 1983, by J. P. Newman, Vice President of Fourth National Bank and Trust Company, Wichita, Kansas, a Kansas Corporation, on behalf of the corporation.

Nancy Helton, Notary Public

My Commission expires: 9/12/86



This plat of "Wichita Land Addition", Wichita, Sedgwick County, Kansas has been submitted to and approved by the Wichita-Sedgwick County Metropolitan Area Planning Commission, Wichita, Kansas.

Dated this 25th day of August, 1983.

Wichita-Sedgwick County Metropolitan Area Planning Commission

David Bayouth, Chairman  
Robert A. Lakin, Secretary

This plat approved and all dedications shown hereon, if any, accepted by the Board of City Commissioners of the City of Wichita, Kansas, this 12th day of December, 1983.

Margaret Wright, Mayor  
Donald E. Glick, City Clerk

#670758

This plat approved and all dedications shown hereon, if any accepted by the Board of County Commissioners of Sedgwick County, Kansas, this 12 day of Jan, 1984.

Jack Spratt, Chairman  
Donald C. Hagg, Commissioner  
Tom Scott, Commissioner

ATTEST:  
Dorothy K. White, County Clerk

Recorded on transfer record this 12 day of Jan, 1984.

Dorothy K. White, County Clerk

State of Kansas, County of Sedgwick, SS.

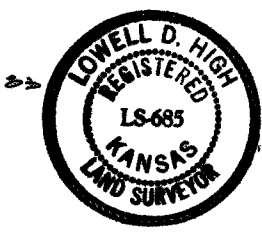
This is to certify that this instrument was filed for record in the Register of Deeds Office, at 1100 o'clock, A.M., on the 12th day of JANUARY, 1984.

Bette F. McCart, Register of Deeds  
Pat Kettler, Deputy

State of Kansas, County of Sedgwick, SS.

I, Lowell D. High, Land Surveyor in the State of Kansas do hereby certify that I have surveyed and platted "Wichita Land Addition", Wichita, Sedgwick County, Kansas and that the accompanying plat is a true and correct exhibit of said survey described as follows: The South Half of the Northwest Quarter of the Southeast Quarter of the Southwest Quarter of Section 1, Township 27 South, Range 1 East of the 6th P.M., except the West 30 feet of the South 56.69 feet thereof, Sedgwick County, Kansas; and the East Half of the West Half of the South Half of the West Half of the Southeast Quarter of the Southwest Quarter of Section 1, Township 27 South, Range 1 East of the 6th P.M., Sedgwick County, Kansas.

Lowell D. High, Land Surveyor



Know all men by these presents that Wichita Land Associates, Inc., a Kansas Corporation, by Aleksandar Hadjicki, President, has caused the land described in the Land Surveyor's Certificate to be platted into Lots and Streets to be known as "Wichita Land Addition", Wichita, Sedgwick County, Kansas.

The streets are hereby dedicated to and for the use of the public. Utility easements as indicated on the plat are hereby granted for the construction and maintenance of all public utilities. The drainage easement as indicated on the plat is hereby granted for drainage purposes. The drainage and utility easement as indicated on the plat is hereby granted for drainage purposes and construction and maintenance of all public utilities. The water line easement as indicated on the plat is hereby granted for the construction and maintenance of a public water line.

All abutter's rights of access to or from 21st Street North, over and across the south line of Lot 1, are hereby granted to the City of Wichita, provided, however, that Lot 1 shall have access to 21st Street North at two locations to be designated by the City Engineer of Wichita, Kansas.

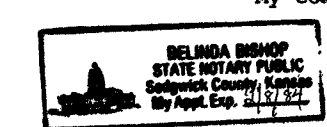
Wichita Land Associates, Inc.,  
Aleksandar Hadjicki, President

ATTEST:  
Patricia M. Stevenson, Secretary

State of Kansas, County of Sedgwick, SS.

Be it remembered that on this 1st day of November, 1983, before me a notary public in aforesaid county and state name Aleksandar Hadjicki, President and to me known to be the same persons who executed the foregoing instrument of writing and duly acknowledged the execution of the same for and on behalf and as the act and deed of said corporation. In testimony thereof I have hereunto set my hand and affixed my notarial seal the day and year above written.

Aleksandar Hadjicki, Notary Public  
My Commission expires: February 2, 1984



The Fourth National Bank and Trust Company, Wichita, Kansas, by J. P. Newman, Vice President, mortgagee to the land described in the Land Surveyor's Certificate, does hereby consent to the plating of "Wichita Land Addition", Wichita, Sedgwick County, Kansas.

Fourth National Bank and Trust Company, Wichita, Kansas

ATTEST:  
J. P. Newman

The Union National Bank of Wichita, Kansas, by Shirley Schatz, Vice President mortgagee to the land described in the Land Surveyor's Certificate, does hereby consent to the plating of "Wichita Land Addition", Wichita, Sedgwick County, Kansas.

ATTEST:  
Shirley Schatz, Vice President

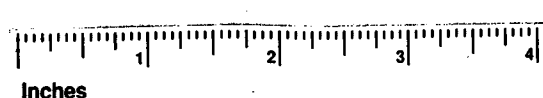
State of Kansas, County of Sedgwick, SS.  
The foregoing instrument was acknowledged before me this 1st day of December, 1983, by Shirley Schatz, Vice President of Union National Bank of Wichita, Kansas, on behalf of the corporation.

Carol M. King, Notary Public  
My Commission Expires: 8-12-83

20.00

S-3 1-31

S-3 1-31



This digital plat record accurately reproduces in all details the original plat filed with the Sedgwick County Register of Deeds. Digitized under the supervision of Register of Deeds Bill Meek by Sedgwick County Geographic Information Systems.  
Bill Meek, Register of Deeds  
Digitized reproduction of original signature

|   |   |
|---|---|
| SRB   | CHK   |
| CS  | DWN   |
| EAM   | DSN   |
| 2/22/23   | INITIAL RELEASE   |
| 0   | REV DATE  |
| SHAWN R. BRYAN<br>ENGINEER<br>KS # 17899  | PROFESSIONAL ENGINEER<br>LICENSED<br>17899<br>2/22/23   |
| 200 N. EMPORIA, SUITE 100<br>WICHITA, KANSAS 67202<br>PH. (316) 440-4304   FAX (316) 440-4309<br>www.kawvalley.com   www.kveing.com | KAW VALLEY ENGINEERING<br>KAW VALLEY ENGINEERING, INC. IS AUTHORIZED TO OFFER ENGINEERING SERVICES BY KANSAS STATE CERTIFICATE OF AUTHORIZATION # E-113. EXPIRES 12/31/22 |
| SPECTRA STUDENT LIVING<br>21ST STREET & PINECREST AVE<br>WICHITA, KANSAS  | PLAT  |
| PROJ. NO. G21_2066  | DESIGNER EKM  |
| CFN 2066WDET  | DRAWN BY CS   |
| SHEET 16  | REV 0   |