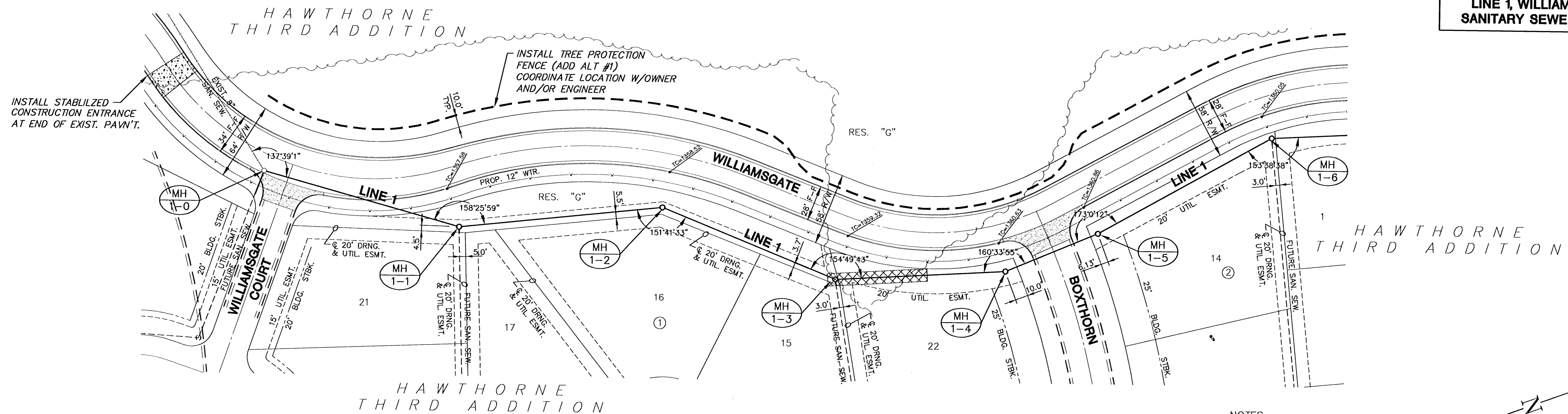
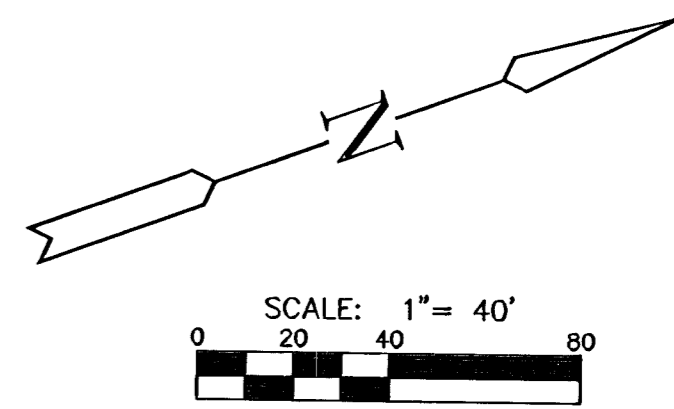


**HAWTHORNE THIRD ADDITION
LINE 1, WILLIAMSGATE
SANITARY SEWER PLANS**



PLAN LINE 1
SCALE: 1"=40'

NOTES:
1. TRENCHES TO BE BACKFILLED WITH SAND AND FLUSHED WHEN SEWER LINE RUNS ALONG FRONT OF LOTS.
[Cross-hatched symbol] = TREE REMOVAL



PROFILE LINE 1
SCALE: HORIZ. 1"=40'
SCALE: VERT. 1"=5'

