

Lat. 09, Main 13, SS #23
SANITARY SEWER IMPROVEMENTS

to serve
FALCON FALLS 3RD ADDITION - PHASE I

CITY OF WICHITA, KANSAS

James L. Armour, P.E. City Engineer

Project Number

468-84096

O.C.A. Number

744181

GENERAL NOTES:

1. Contractor will be required to provide notice to utility companies a minimum of forty-eight (48) hours prior to any excavation, as follows:

Kansas One-Call 687-2470

The Contractor must notify the following in case of an emergency:

Cox Communications 262-4270
 Kansas Gas Service 1-888-482-4950
 Westar Energy 383-8650
 Aquila Energy 1-800-303-0357
 SBC 268-2245
 City of Wichita Water Dept. 268-4563
 City of Wichita Sewer Maint. 268-4024
 City of Wichita Storm Sewer Maint. 268-4030
 City of Wichita Traffic Maint. 268-4034
 Conoco Phillips Pipeline 1-877-267-2290
 Southern Star Pipeline 529-6600
 Kinder Morgan Pipeline 1-888-844-5658

2. Utility service lines, poles, valve boxes, meters, and etcetera are to be adjusted as necessary by others prior to construction unless the plans specifically call for their adjustment by the Contractor or unless the plans specifically identify a utility to be adjusted by its owner during construction. Existing utilities and their location, as shown on the plans, represent the best information obtainable for design. The Contractor will be required to work around existing utilities within the right-of-way which do not conflict with proposed construction.

3. Rubble from the removal of miscellaneous structures and excess excavation which is to be wasted shall be disposed of on sites to be provided by the Contractor. These sites shall be approved by the Engineer as to suitability, appearance and site location. Locations, in the opinion of the Engineer, that will leave an unsightly appearance will not be approved. All disposal sites must be approved by the Kansas Department of Health and Environment. Material either stockpiled or disposed of in a flood plain would require a Kansas State Board of Agriculture permit. Any material dumped in waters of the United States or wetlands is subject to U.S. Corps of Engineers permitting regulations. Any material buried or stockpiled beyond approved construction limits would require additional archaeological investigations unless buried in a previously approved borrow location.

4. Trees and shrubs in public right-of-way which are in direct conflict with proposed new construction shall be removed by the Contractor with the Engineer's approval. Trees and shrubs which are not in direct conflict with proposed new construction shall be saved and protected from damage.

5. The Contractor shall give all property owners and/or tenants of developed property abutting the construction of this project a minimum of ten (10) days notice prior to start of construction.

6. The Contractor shall be responsible for preserving property irons. The Contractor will be required to re-establish any property irons which are damaged or destroyed by his construction operations. Such irons shall be re-established by a licensed land surveyor in accordance with state laws.

7. All excess excavation shall remain on-site and shall be stockpiled or spread at a location determined by the engineer.

8. The developer for this project is Jay Russell, (316) 722-2417

9. All existing and proposed erosion control measures including silt fencing, erosion control mat, straw bales, inlet barriers, and const. entrance shall be maintained throughout construction by the contractor and until project is accepted by the City of Wichita. The on-site engineer shall complete weekly reports on the status of erosion control measures. The contractor shall be required to comply with maintenance and/or replacement of erosion control measures as determined by the on-site engineer until project is accepted by City of Wichita. Maintenance and/or replacement of erosion control measures to be paid by L.S. bid item "Site Clearing & Restoration."

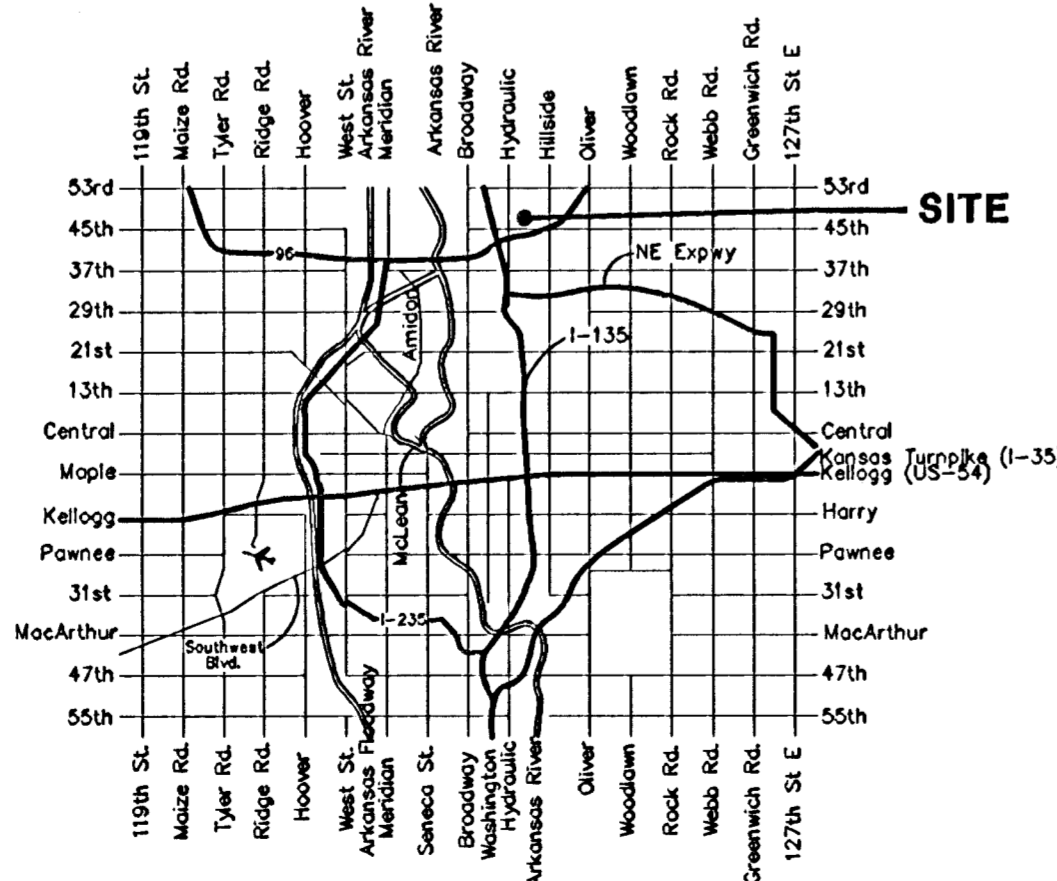
10. The Contractor shall be responsible for maintaining continuous flow of sewage through construction. Contractor's proposed method for maintaining sewage flow shall be approved by the Engineer. Cost of maintaining flow of sewage through construction will not be paid for directly and this cost shall be considered as subsidiary to the other pay items of work.

11. Contractor shall grade around exposed manholes at a 1:1 slope. Manholes set lower than existing grade shall have a 9" berm constructed around manholes to prevent infiltration into sanitary sewer system. Cost of dirt, labor, equipment, etc. to be incidental to cost of manhole. Easements shall be graded with the street improvement project as part of the mass grading plan.

12. All Risers shall be constructed using Method "B."

13. All areas disturbed during construction shall be seeded at 300 lbs./acre with Rye Grass immediately following construction in that area. Contractor shall prepare ground per City Specifications.

14. Contractor shall coordinate construction with Storm Water Drain contractor. Mass Grading construction will begin before start of construction of this project.

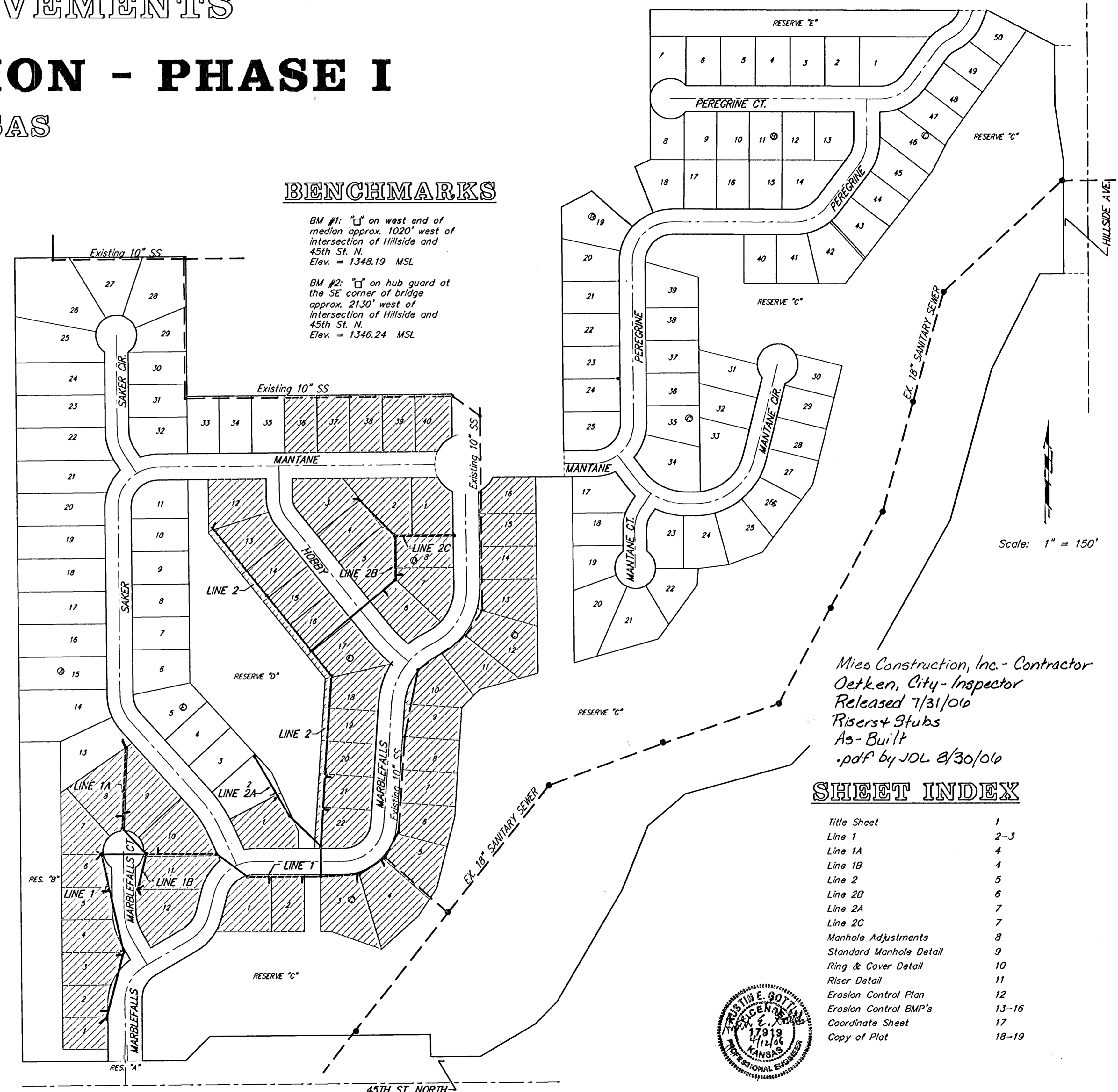


Vicinity Map

BENCHMARKS

BM #1: "1" on west end of median approx. 1020' west of intersection of Hillside and 45th St. N. Elev. = 1348.19 MSL

BM #2: "2" on hub guard at the SE corner of bridge approx. 2130' west of intersection of Hillside and 45th St. N. Elev. = 1346.24 MSL



Mies Construction, Inc. - Contractor
 Oetken, City-Inspector
 Released 7/31/06
 Risers & Stubs
 As-Built
 .pdf by JOL 8/30/06

SHEET INDEX

Title Sheet	1
Line 1	2-3
Line 1A	4
Line 1B	4
Line 2	5
Line 2B	6
Line 2A	7
Line 2C	7
Manhole Adjustments	8
Standard Manhole Detail	9
Ring & Cover Detail	10
Riser Detail	11
Erosion Control Plan	12
Erosion Control BMP's	13-16
Coordinate Sheet	17
Copy of Plat	18-19



Baughman Company, P.A. 315 Ellis St. Wichita, KS 67211 P 316-262-7271 F 316-262-0147
 ENGINEERING | SURVEYING | PLANNING | LANDSCAPE ARCHITECTURE

Benefit District