

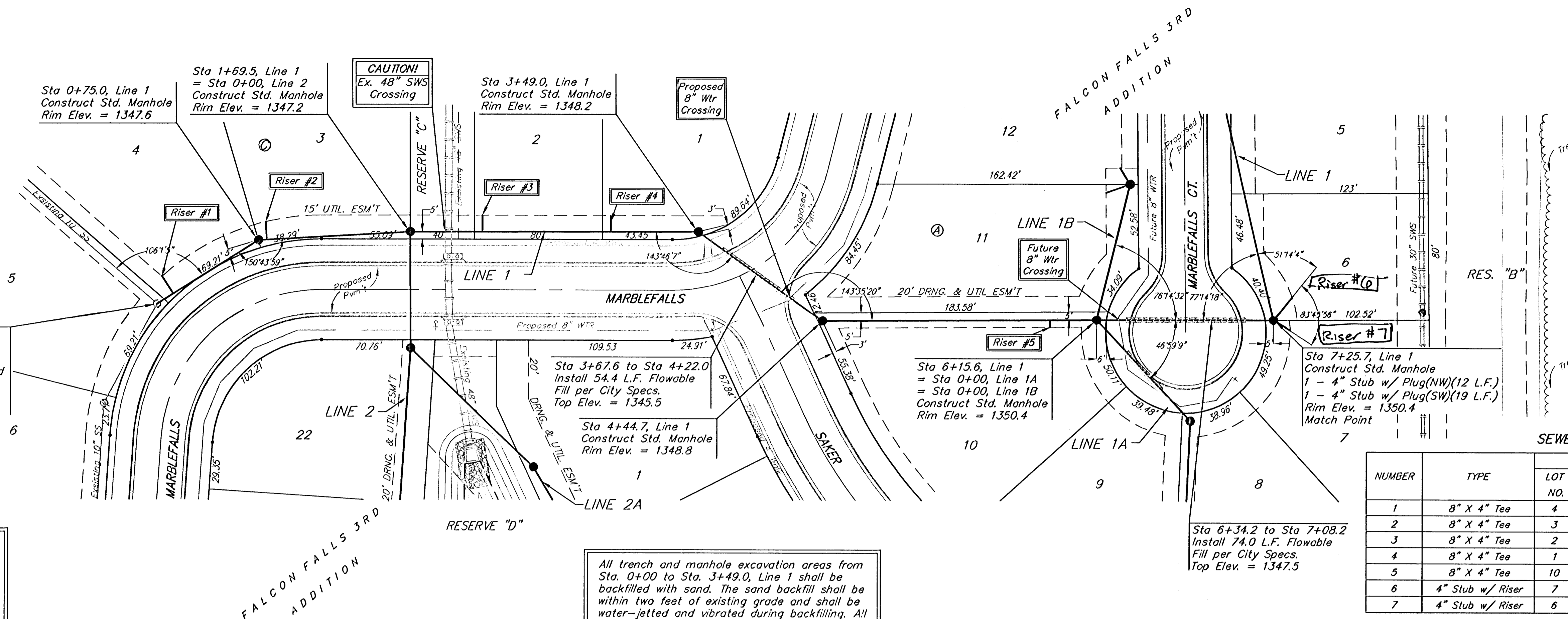
**BENCHMARKS:**

BM #1: "□" on west end of median approx. 1020' west of intersection of Hillside and 45th St. N. Elev. = 1348.19 MSL

BM #2: "□" on hub guard at the SE corner of bridge approx. 2130' west of intersection of Hillside and 45th St. N. Elev. = 1346.24 MSL

Sta 0+00, Begin Line 1 Remove existing stub from manhole and extend 8" pipe south west. Seal & grout around pipe and reshape invert. Adjust SSMH from 1350.4 to 1348.1. Cost to be incidental to "8" Pipe.

Remove trees only as necessary for sanitary sewer construction and only with permission of Developer or Baughman Co. Cost of removal to be incidental to lump sum bid item "Site Clearing & Restoration".



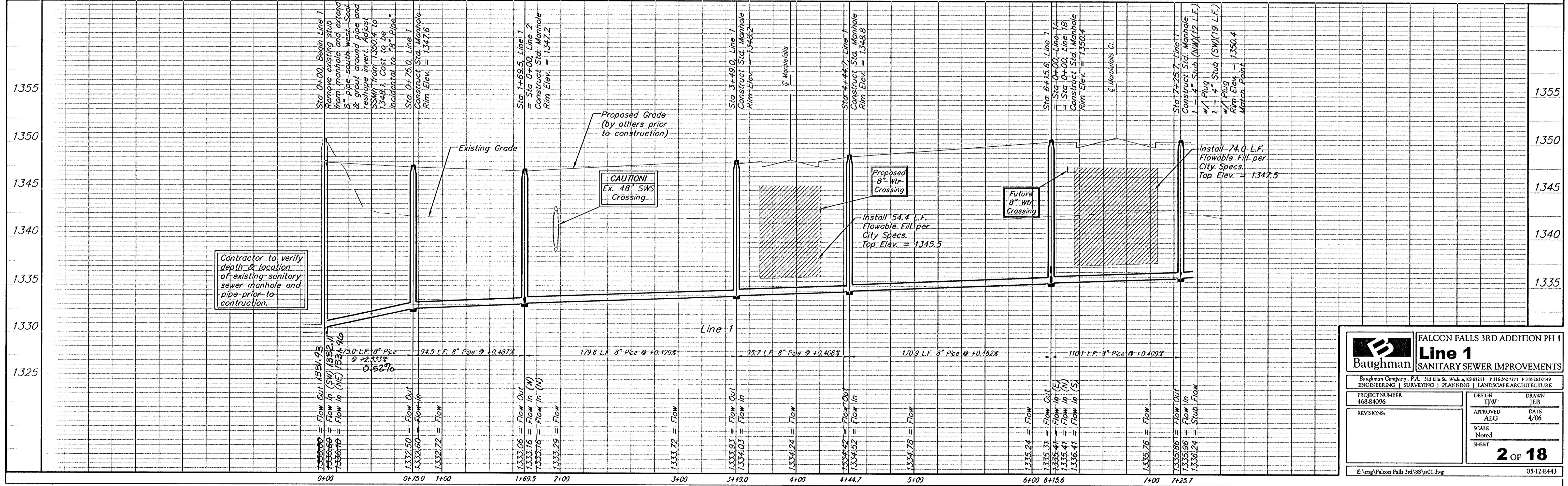
Scale:  
1" = 40' Horizontal  
1" = 5' Vertical  
• = Iron

**SEWER SERVICE TABLE**

NUMBER	TYPE	LOCATION			STATION\ DIRECTION	FOR INFORMATION ONLY	
		LOT NO.	BLOCK NO.	LINE NO.		APPROXIMATE LENGTH 4" PIPE	VERTICAL
1	8" X 4" Tee	4	C	1	0+12.0/Lt.	16'	13'
2	8" X 4" Tee	3	C	1	0+80.0/Lt.	14'	11'
3	8" X 4" Tee	2	C	1	2+14.5/Lt.	13'	10'
4	8" X 4" Tee	1	C	1	2+94.5/Lt.	12'	10'
5	8" X 4" Tee	10	A	1	5+86.6/Rt.	11'	5'
6	4" Stub w/ Riser	7	A	1	7+25.7/Rt.	12'	12'
7	4" Stub w/ Riser	6	A	1	7+25.7/Rt.	12'	19'

NOTE: Vertical Riser Pipe shall be extended to 2' minimum above ground water elevation and 4' maximum below proposed ground elevation.

All trench and manhole excavation areas from Sta. 0+00 to Sta. 3+49.0, Line 1 shall be backfilled with sand. The sand backfill shall be within two feet of existing grade and shall be water-jetted and vibrated during backfilling. All costs shall be subsidiary to pipe cost.



Contractor to verify depth & location of existing sanitary sewer manhole and pipe prior to construction.

**Baughman** FALCON FALLS 3RD ADDITION PH I  
**Line 1**  
SANITARY SEWER IMPROVEMENTS

PROJECT NUMBER: 468-84096  
DESIGN: TJW  
DRAWN: JEB

APPROVED: AEG  
DATE: 4/06

SCALE: Noted  
SHEET: **2 OF 18**

E:\eng\Falcon Falls 3rd\SS\01.dwg 05-12-E443