

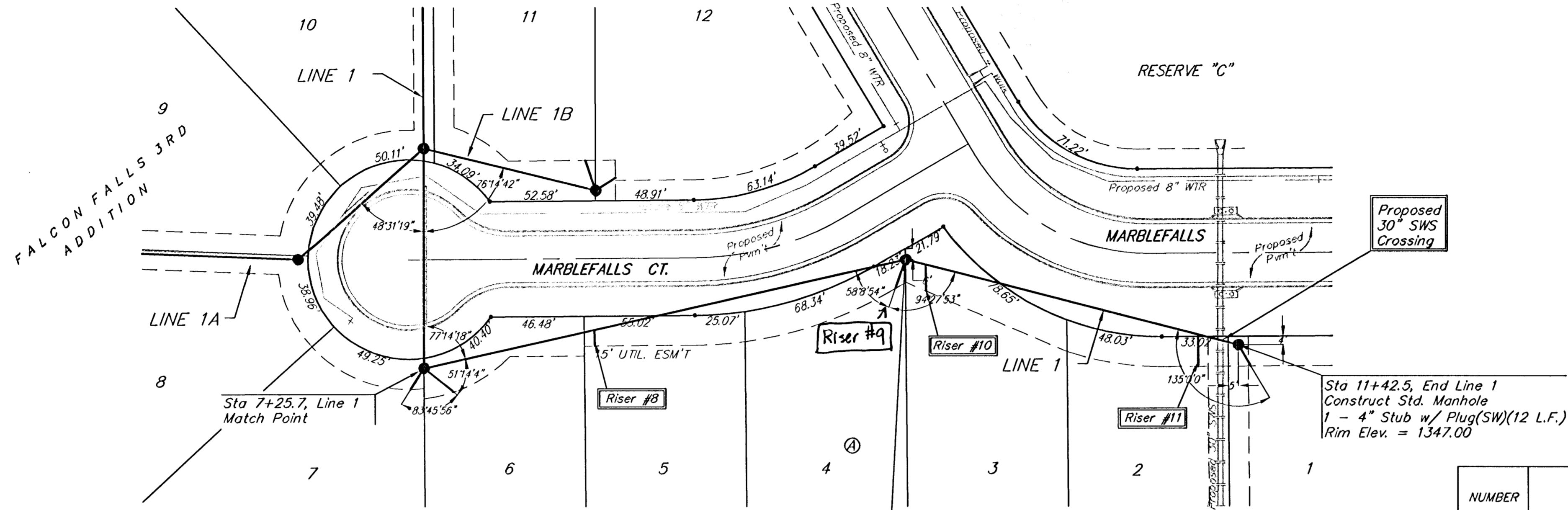
**BENCHMARKS:**

BM #1: "□" on west end of median approx. 1020' west of intersection of Hillside and 45th St. N.  
Elev. = 1348.19 MSL

BM #2: "□" on hub guard at the SE corner of bridge approx. 2130' west of intersection of Hillside and 45th St. N.  
Elev. = 1346.24 MSL



Scale:  
1" = 40' Horizontal  
1" = 5' Vertical  
• = Iron



All trench and manhole excavation areas from Sta. 7+25 to Sta. 11+42, Line 1 shall be backfilled with sand. The sand backfill shall be within two feet of existing grade and shall be water-jetted and vibrated during backfilling. All costs shall be subsidiary to pipe cost.

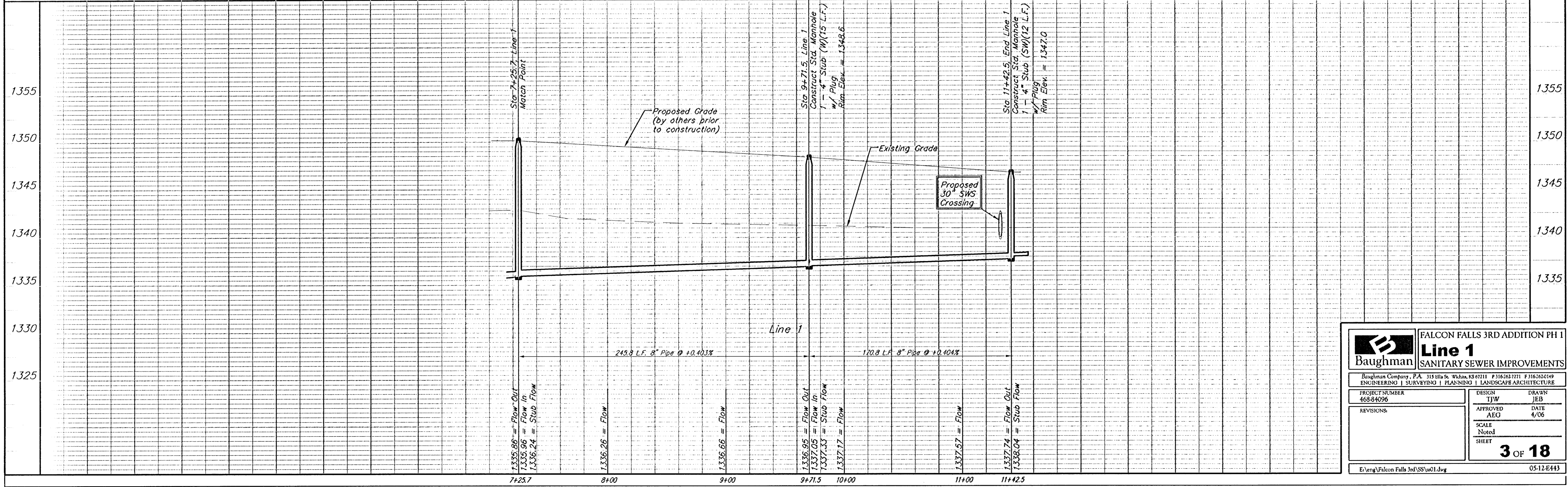
Sta 9+71.5, Line 1  
Construct Std. Manhole  
1 - 4" Stub w/ Plug(W)(15 L.F.)  
Rim Elev. = 1348.6

Sta 11+42.5, End Line 1  
Construct Std. Manhole  
1 - 4" Stub w/ Plug(SW)(12 L.F.)  
Rim Elev. = 1347.00

**SEWER SERVICE TABLE**

NUMBER	TYPE	LOCATION			FOR INFORMATION ONLY	
		LOT NO.	BLOCK NO.	LINE NO. STATION\ DIRECTION	APPROXIMATE LENGTH 4" PIPE	VERTICAL
8	8" X 4" Tee	5	A	1 8+12.8/Rt.	11'	8'
9	4" Stub w/ Riser	4	A	1 9+71.5/Rt.	10'	15'
10	8" X 4" Tee	3	A	1 9+81.9/Rt.	9'	13'
11	8" X 4" Tee	2	A	1 11+21.8/Rt.	8'	16'

NOTE: Vertical Riser Pipe shall be extended to 2' minimum above ground water elevation and 4' maximum below proposed ground elevation.



**Baughman** FALCON FALLS 3RD ADDITION PH 1  
**Line 1**  
SANITARY SEWER IMPROVEMENTS

Baughman Company, P.A. 315 11th St. W. White, NJ 07071 P: 908-684-0900 F: 908-684-0901  
ENGINEERING | SURVEYING | PLANNING | LANDSCAPE ARCHITECTURE

PROJECT NUMBER 468-84096	DESIGN TIW	DRAWN JEB
REVISIONS	APPROVED AEG	DATE 4/06
	SCALE Noted	

**3 OF 18**

E:\eng\Falcon Falls 3rd\SS\ss01.dwg 05-12-E443