

**BENCHMARKS:**

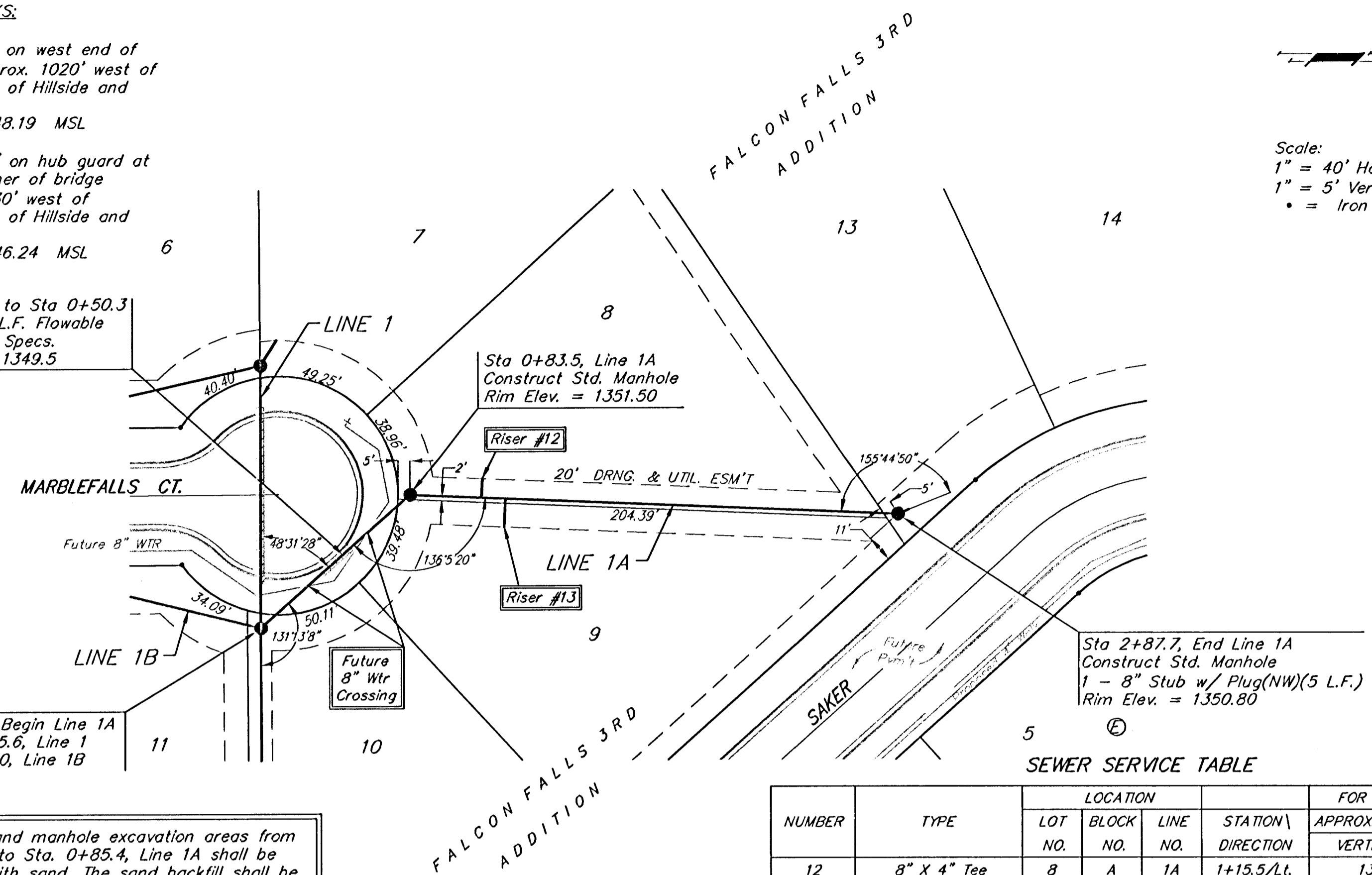
BM #1: "□" on west end of median approx. 1020' west of intersection of Hillside and 45th St. N.  
Elev. = 1348.19 MSL

BM #2: "□" on hub guard at the SE corner of bridge approx. 2130' west of intersection of Hillside and 45th St. N.  
Elev. = 1346.24 MSL

Sta 0+34.7 to Sta 0+50.3  
Install 15.6 L.F. Flowable Fill per City Specs.  
Top Elev. = 1349.5

Sta 0+00, Begin Line 1A  
= Sta 6+15.6, Line 1  
= Sta 0+00, Line 1B

All trench and manhole excavation areas from Sta. 0+00 to Sta. 0+85.4, Line 1A shall be backfilled with sand. The sand backfill shall be within two feet of existing grade and shall be water-jetted and vibrated during backfilling. All costs shall be subsidiary to pipe cost.



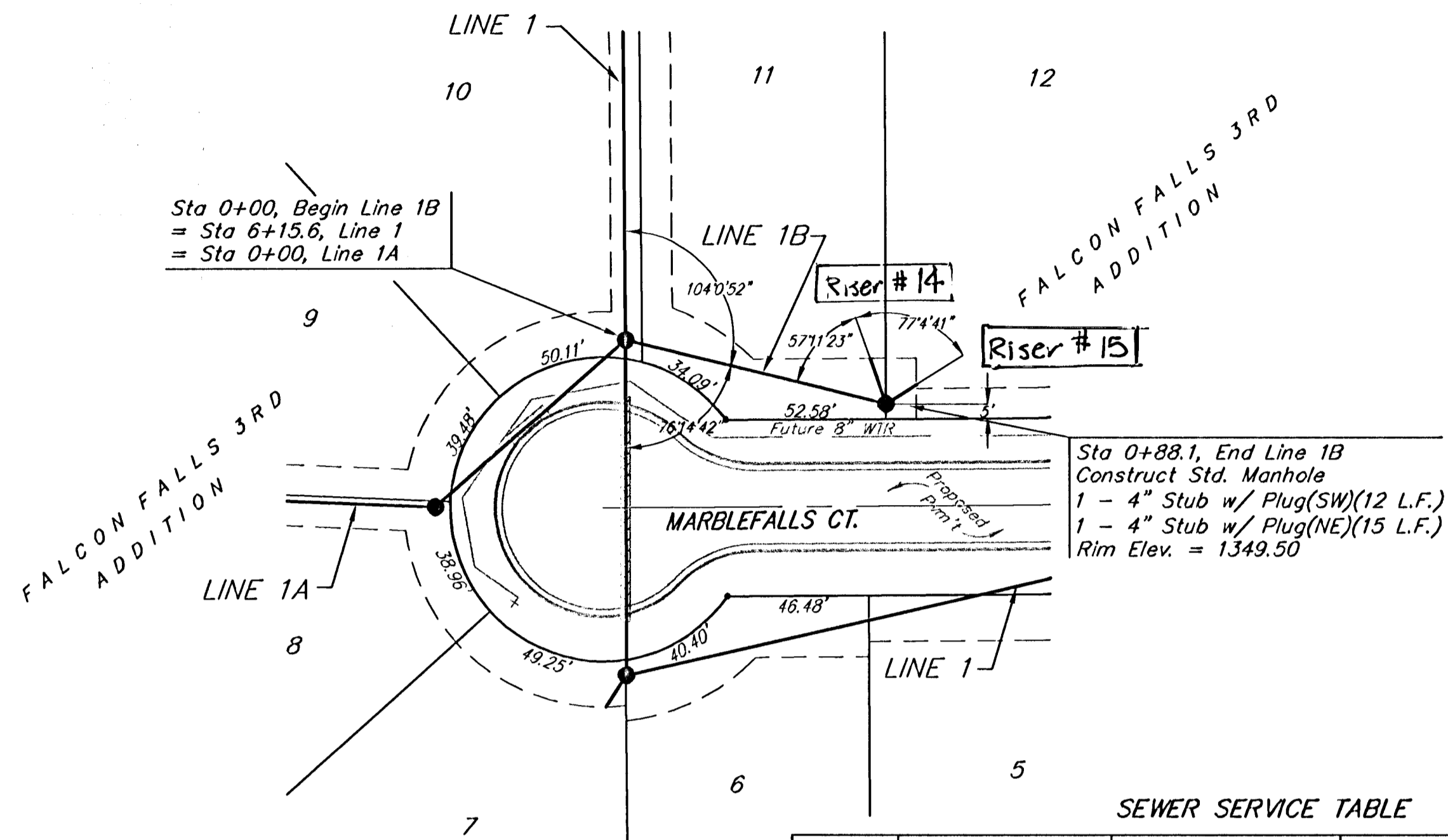
SEWER SERVICE TABLE

NUMBER	TYPE	LOCATION				FOR INFORMATION ONLY	
		LOT NO.	BLOCK NO.	LINE NO.	STATION \ DIRECTION	APPROXIMATE LENGTH 4" PIPE VERTICAL	HORIZONTAL
12	8" X 4" Tee	8	A	1A	1+15.5/Lt.	13'	18' 8"
13	8" X 4" Tee	9	A	1A	1+25.5/Rt.	13'	18' 12"

NOTE: Vertical Riser Pipe shall be extended to 2' minimum above ground water elevation and 4' maximum below proposed ground elevation.

Scale:  
1" = 40' Horizontal  
1" = 5' Vertical  
• = Iron

Scale:  
1" = 40' Horizontal  
1" = 5' Vertical  
• = Iron

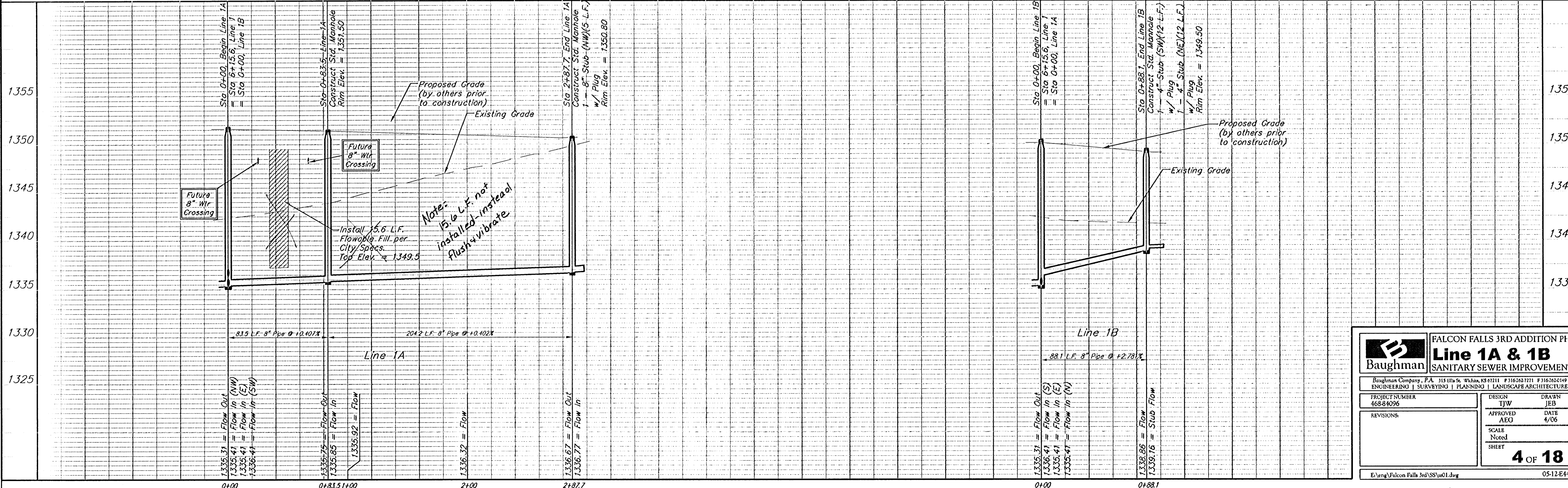


SEWER SERVICE TABLE

NUMBER	TYPE	LOCATION				FOR INFORMATION ONLY	
		LOT NO.	BLOCK NO.	LINE NO.	STATION \ DIRECTION	APPROXIMATE LENGTH 4" PIPE VERTICAL	HORIZONTAL
14	4" Stub w/ Riser	11	A	1B	0+88.1/Lt.	9'	15'
15	4" Stub w/ Riser	12	A	1B	0+88.1/Lt.	9'	12'

NOTE: Vertical Riser Pipe shall be extended to 2' minimum above ground water elevation and 4' maximum below proposed ground elevation.

All trench and manhole excavation areas from Sta. 0+00 to Sta. 0+88.1, Line 1B shall be backfilled with sand. The sand backfill shall be within two feet of existing grade and shall be water-jetted and vibrated during backfilling. All costs shall be subsidiary to pipe cost.



**Baughman** **FALCON FALLS 3RD ADDITION PH I**  
**Line 1A & 1B**  
**SANITARY SEWER IMPROVEMENTS**

Engineering | Surveying | Planning | Landscape Architecture

PROJECT NUMBER: 468-84096  
 DESIGN: TJW  
 DRAWN: JEB

APPROVED: AEG  
 DATE: 4/06

SCALE: Noted  
 SHEET: **4 OF 18**

Revisions:  
 E:\eng\Falcon Falls 3rd\SS\01.dwg  
 05-12-E443