

BENCHMARKS:

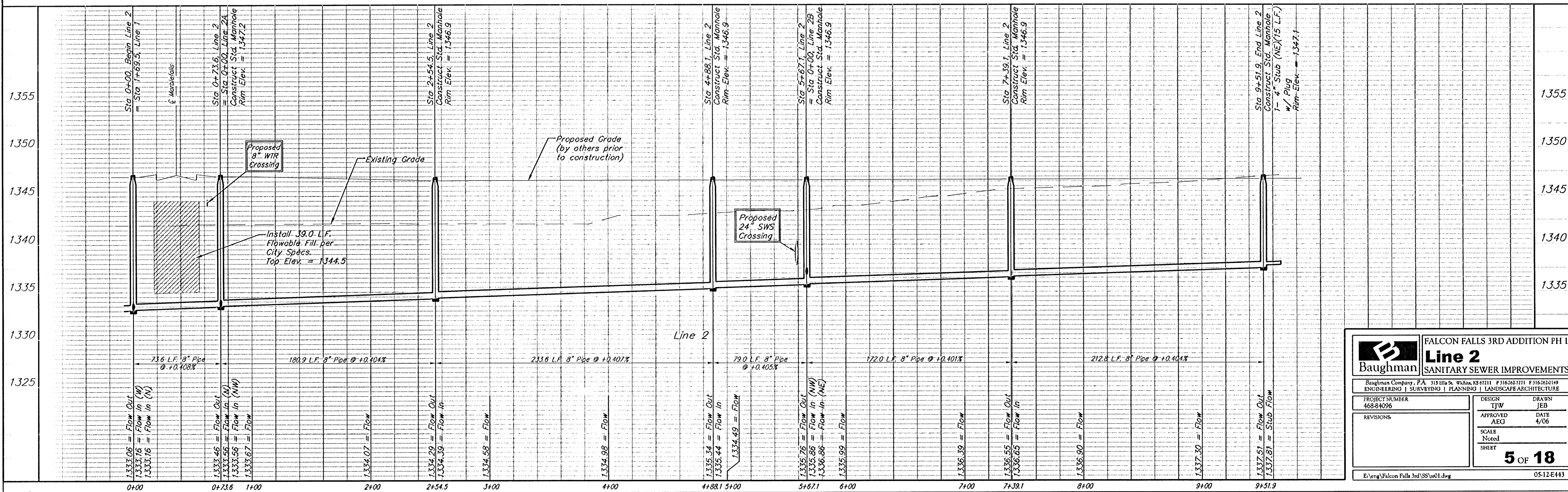
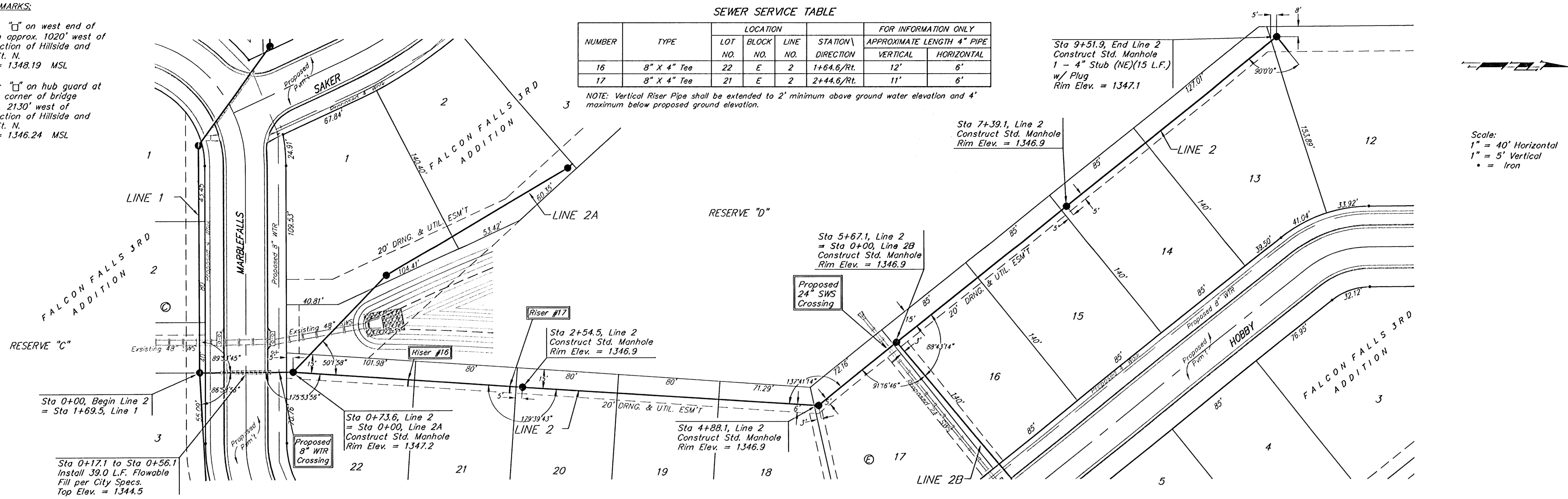
BM #1: "□" on west end of median approx. 1020' west of intersection of Hillside and 45th St. N.
Elev. = 1348.19 MSL

BM #2: "□" on hub guard at the SE corner of bridge approx. 2130' west of intersection of Hillside and 45th St. N.
Elev. = 1346.24 MSL

SEWER SERVICE TABLE

NUMBER	TYPE	LOCATION				FOR INFORMATION ONLY	
		LOT NO.	BLOCK NO.	LINE NO.	STATION DIRECTION	APPROXIMATE LENGTH 4" PIPE	
16	8" X 4" Tee	22	E	2	1+64.6/Rt.	12'	6'
17	8" X 4" Tee	21	E	2	2+44.6/Rt.	11'	6'

NOTE: Vertical Riser Pipe shall be extended to 2' minimum above ground water elevation and 4' maximum below proposed ground elevation.



Baughman **FALCON FALLS 3RD ADDITION PH I**
Line 2
SANITARY SEWER IMPROVEMENTS

Baughman Company, P.A. 315 Elm St. Wichita, KS 67111 P:316.262.7171 F:316.262.1410
 ENGINEERING | SURVEYING | PLANNING | LANDSCAPE ARCHITECTURE

PROJECT NUMBER: 468-84026 DESIGN: TJW DRAWN: JEB
 APPROVED: AEG DATE: 4/06
 SCALE: Noted
 SHEET: **5 OF 18**

E:\eng\Falcon Falls 3rd\SS\01.dwg 05-12-14