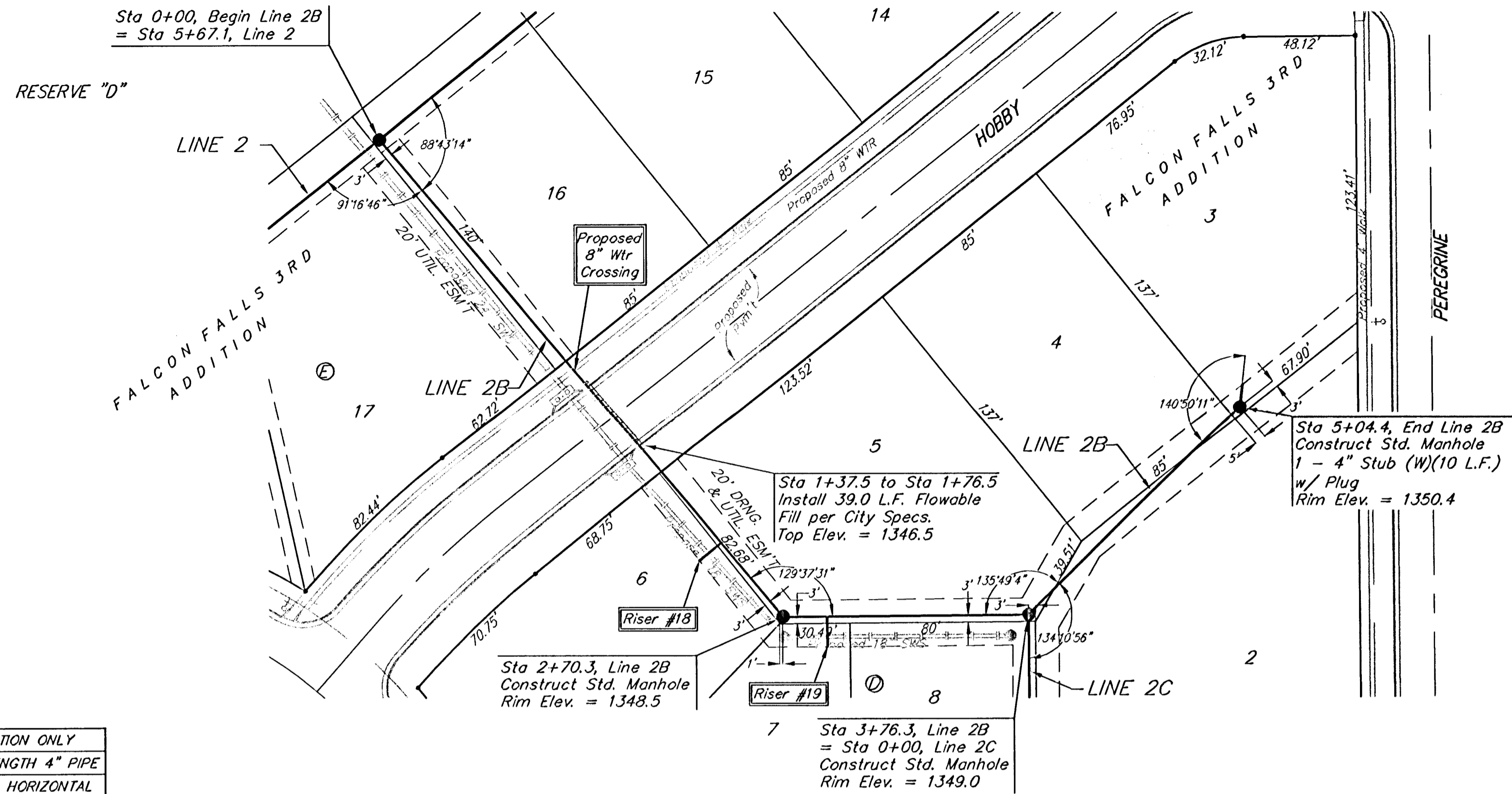


**BENCHMARKS:**

BM #1: "I" on west end of median approx. 1020' west of intersection of Hillside and 45th St. N.  
Elev. = 1348.19 MSL

BM #2: "I" on hub guard at the SE corner of bridge approx. 2130' west of intersection of Hillside and 45th St. N.  
Elev. = 1346.24 MSL

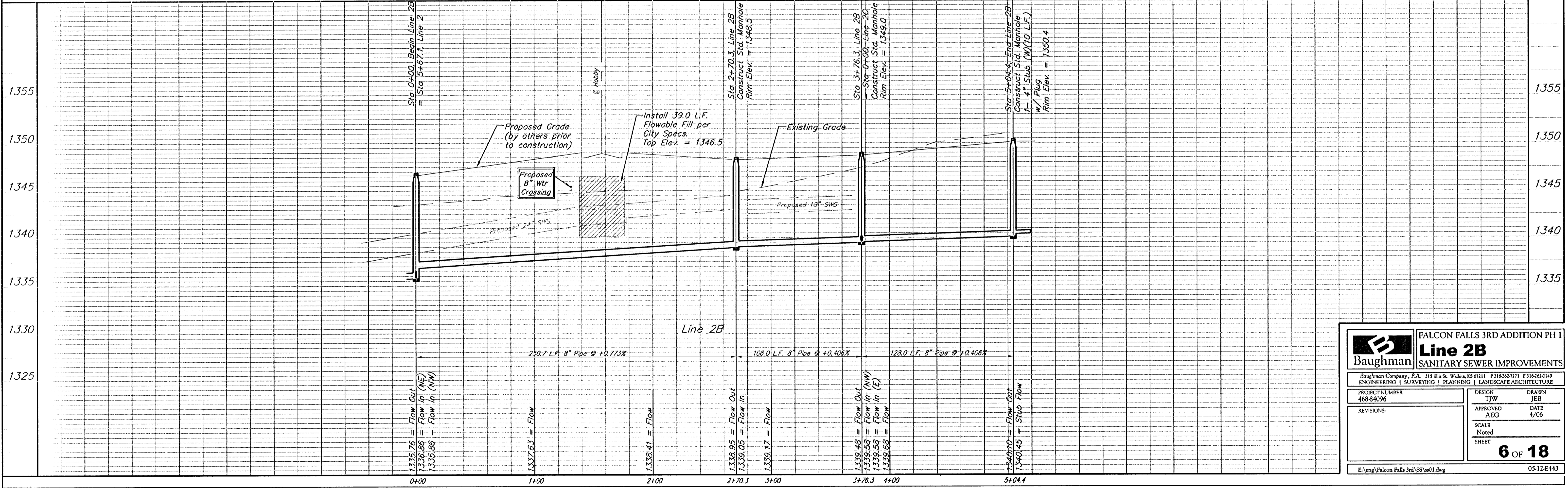


Scale:  
1" = 40' Horizontal  
1" = 5' Vertical  
• = Iron

**SEWER SERVICE TABLE**

NUMBER	TYPE	LOCATION			FOR INFORMATION ONLY	
		LOT NO.	BLOCK NO.	LINE NO.	STATION \ DIRECTION	APPROXIMATE LENGTH 4" PIPE
18	8" X 4" Tee	6	D	2B	2+29.0/Rt.	9' 12'
19	8" X 4" Tee	7	D	2B	2+89.3/Rt.	9' 13'

NOTE: Vertical Riser Pipe shall be extended to 2' minimum above ground water elevation and 4' maximum below proposed ground elevation.



**Baughman** FALCON FALLS 3RD ADDITION PH I  
**Line 2B**  
SANITARY SEWER IMPROVEMENTS

PROJECT NUMBER: 468-84096  
DESIGN: TJW  
APPROVED: AEG  
SCALE: Noted  
SHEET: 6 OF 18

DATE: 4/06

REVISIONS:

E:\eng\Falcon Falls 3rd SSS\ss01.dwg 05-12-E443