

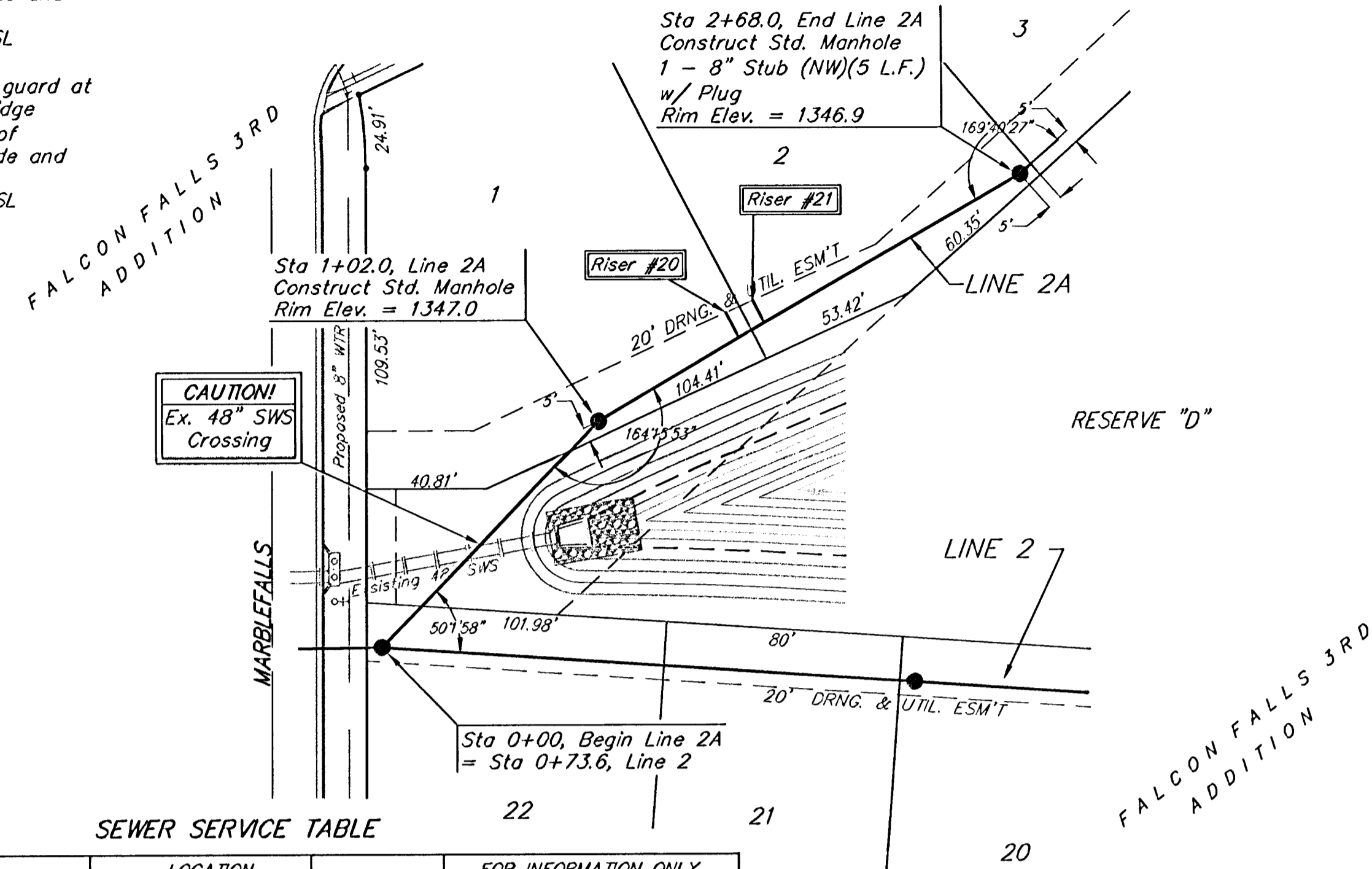
BENCHMARKS:

BM #1: "□" on west end of median approx. 1020' west of intersection of Hillside and 45th St. N.
Elev. = 1348.19 MSL

BM #2: "□" on hub guard at the SE corner of bridge approx. 2130' west of intersection of Hillside and 45th St. N.
Elev. = 1346.24 MSL



Scale:
1" = 40' Horizontal
1" = 5' Vertical
• = Iron



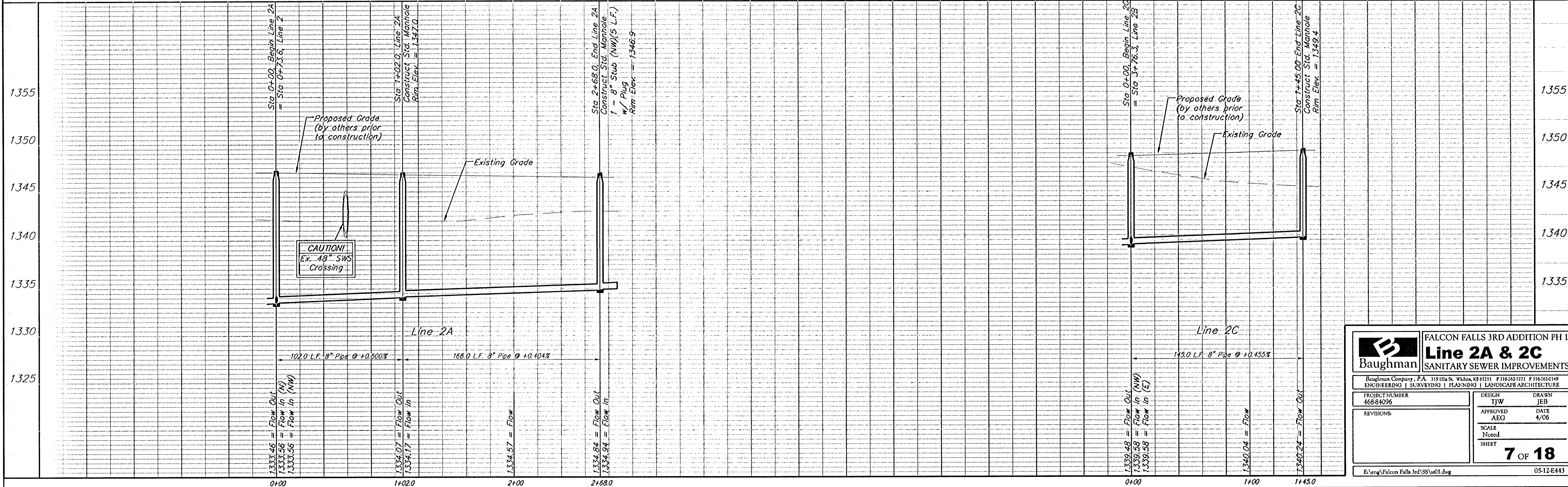
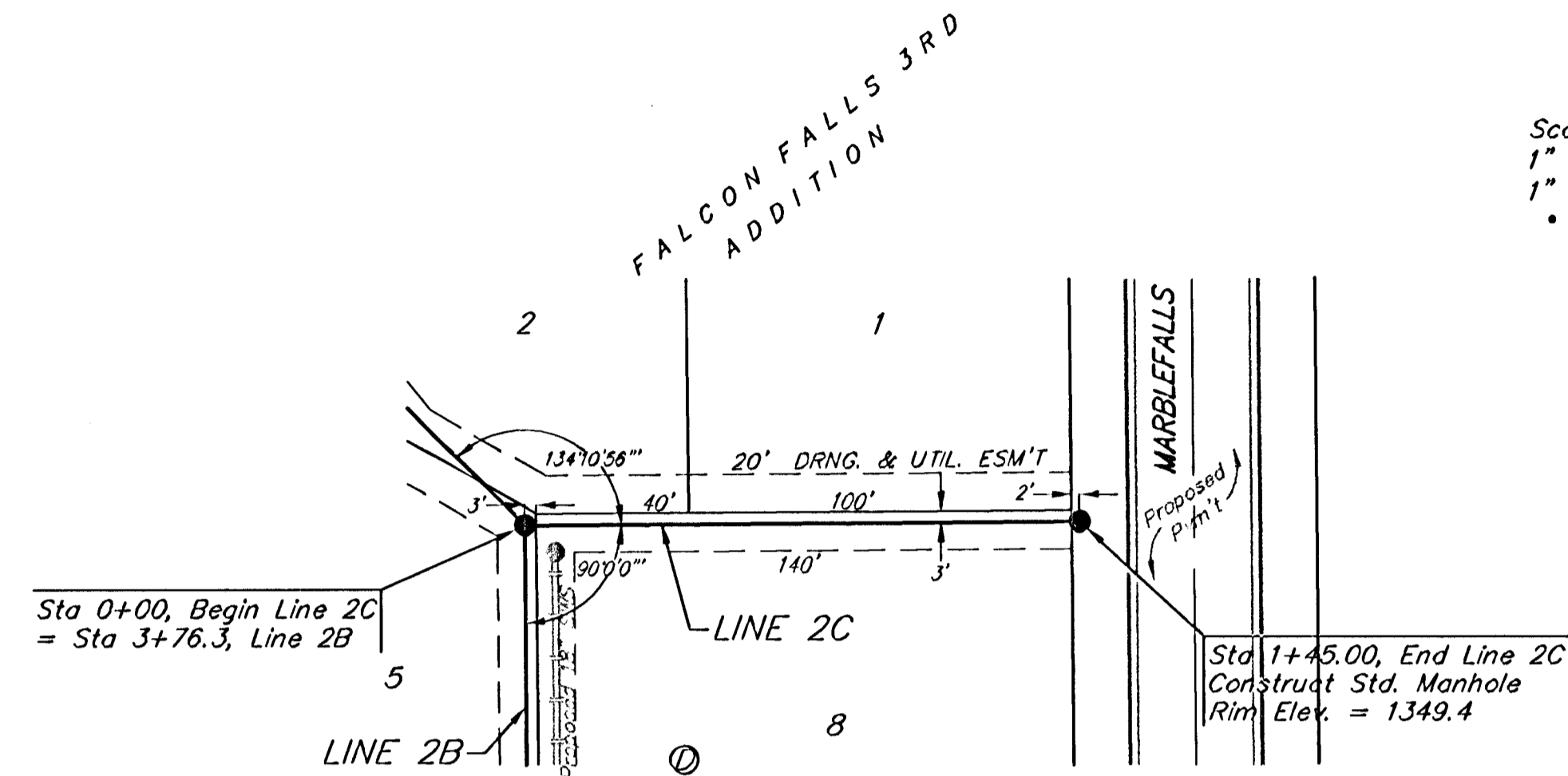
SEWER SERVICE TABLE

NUMBER	TYPE	LOCATION				FOR INFORMATION ONLY	
		LOT NO.	BLOCK NO.	LINE NO.	STATION \ DIRECTION	APPROXIMATE LENGTH 4" PIPE VERTICAL	HORIZONTAL
20	8" X 4" Tee	1	E	2A	1+38.5/Lt.	12'	27' 9"
21	8" X 4" Tee	2	E	2A	1+18.9/Lt.	12'	20' 8"

NOTE: Vertical Riser Pipe shall be extended to 2' minimum above ground water elevation and 4' maximum below proposed ground elevation.



Scale:
1" = 40' Horizontal
1" = 5' Vertical
• = Iron



Baughman		FALCON FALLS 3RD ADDITION PH I	
		Line 2A & 2C	
		SANITARY SEWER IMPROVEMENTS	
Baughman Company, P.A. 315 Ellis St. Wilkes, KS 67211 P 316-262-0149 F 316-262-0149			
ENGINEERING SURVEYING PLANNING LANDSCAPE ARCHITECTURE			
PROJECT NUMBER 468-84096	DESIGN TJW	DRAWN JEB	
REVISIONS:	APPROVED AEG	DATE 4/06	
	SCALE Noted		
			7 OF 18
E:\eng\Falcon Falls 3rd\SS\01.dwg			05-12-E43