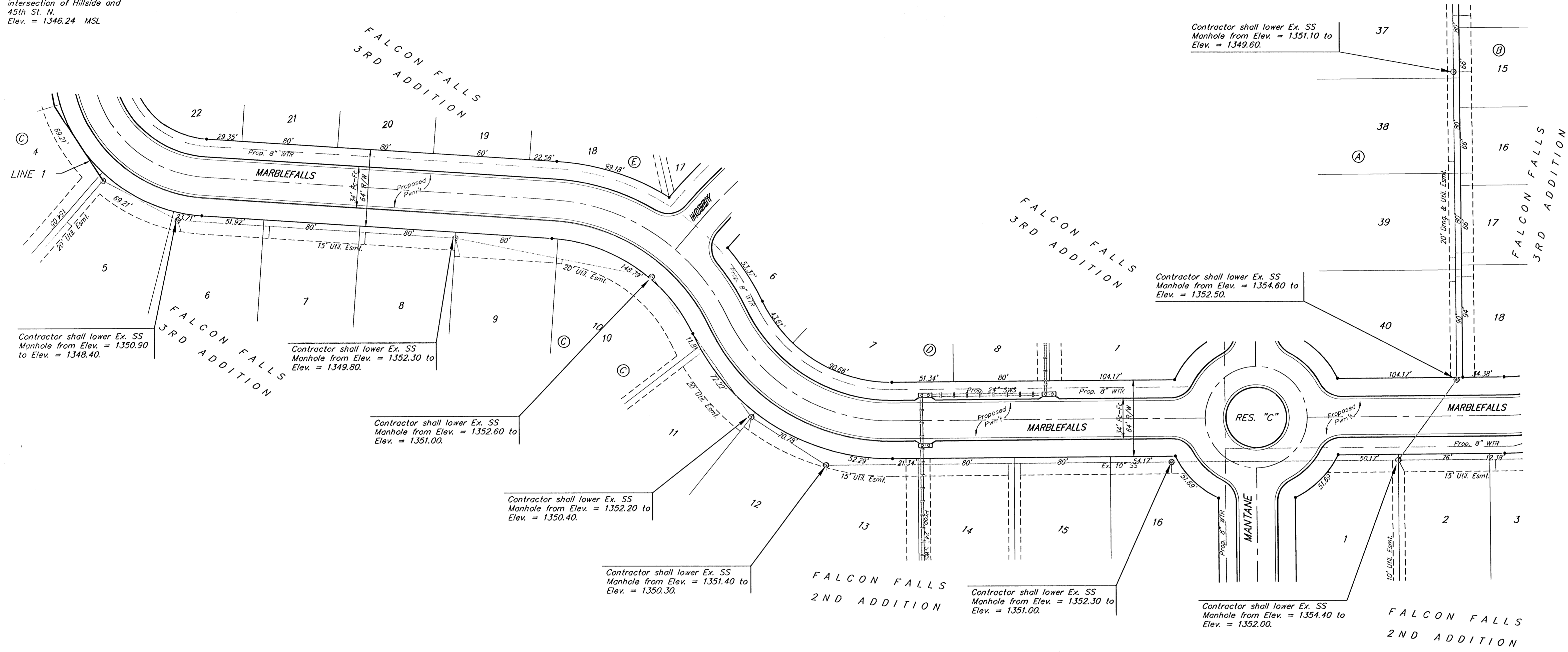


BENCHMARKS:

BM #1: "□" on west end of median approx. 1020' west of intersection of Hillside and 45th St. N.
Elev. = 1348.19 MSL

BM #2: "□" on hub guard at the SE corner of bridge approx. 2130' west of intersection of Hillside and 45th St. N.
Elev. = 1346.24 MSL

Scale: 1" = 40' Horizontal
• = Iron



Contractor shall lower Ex. SS Manhole from Elev. = 1351.10 to Elev. = 1349.60.

Contractor shall lower Ex. SS Manhole from Elev. = 1354.60 to Elev. = 1352.50.

Contractor shall lower Ex. SS Manhole from Elev. = 1350.90 to Elev. = 1348.40.

Contractor shall lower Ex. SS Manhole from Elev. = 1352.30 to Elev. = 1349.80.

Contractor shall lower Ex. SS Manhole from Elev. = 1352.60 to Elev. = 1351.00.

Contractor shall lower Ex. SS Manhole from Elev. = 1352.20 to Elev. = 1350.40.

Contractor shall lower Ex. SS Manhole from Elev. = 1351.40 to Elev. = 1350.30.

Contractor shall lower Ex. SS Manhole from Elev. = 1352.30 to Elev. = 1351.00.

Contractor shall lower Ex. SS Manhole from Elev. = 1354.40 to Elev. = 1352.00.

		FALCON FALLS 3RD ADD. - PH. 1 MANHOLE ADJUSTMENTS SANITARY SEWER IMPROVEMENTS	
		<small>Baughman Company, P.A. 315 Ella St. Wichita, KS 67111 P 316-262-7211 F 316-262-0149 ENGINEERING SURVEYING PLANNING LANDSCAPE ARCHITECTURE</small>	
PROJECT NUMBER 468-84096	DESIGN AEG	DRAWN AEG	APPROVED AEG
REVISIONS:	DATE 04/06	SCALE Noted	SHEET 8 OF 19
<small>E:\Veng\Falcon Falls 3rdSS\MH Adj.dwg</small>		<small>05-12-E443</small>	