

**EROSION CONTROL PLAN LEGEND**  
(Detailing Details Found in the SWS Plan)

- LIGHT STONE RIP-RAP
- DROP INLET PROTECTION
- CURB INLET PROTECTION
- STRAW BALE BARRIERS
- SILT FENCING
- EARTH DIKES
- VEGETATED AREA LEFT UNDISTURBED

NO SCALE

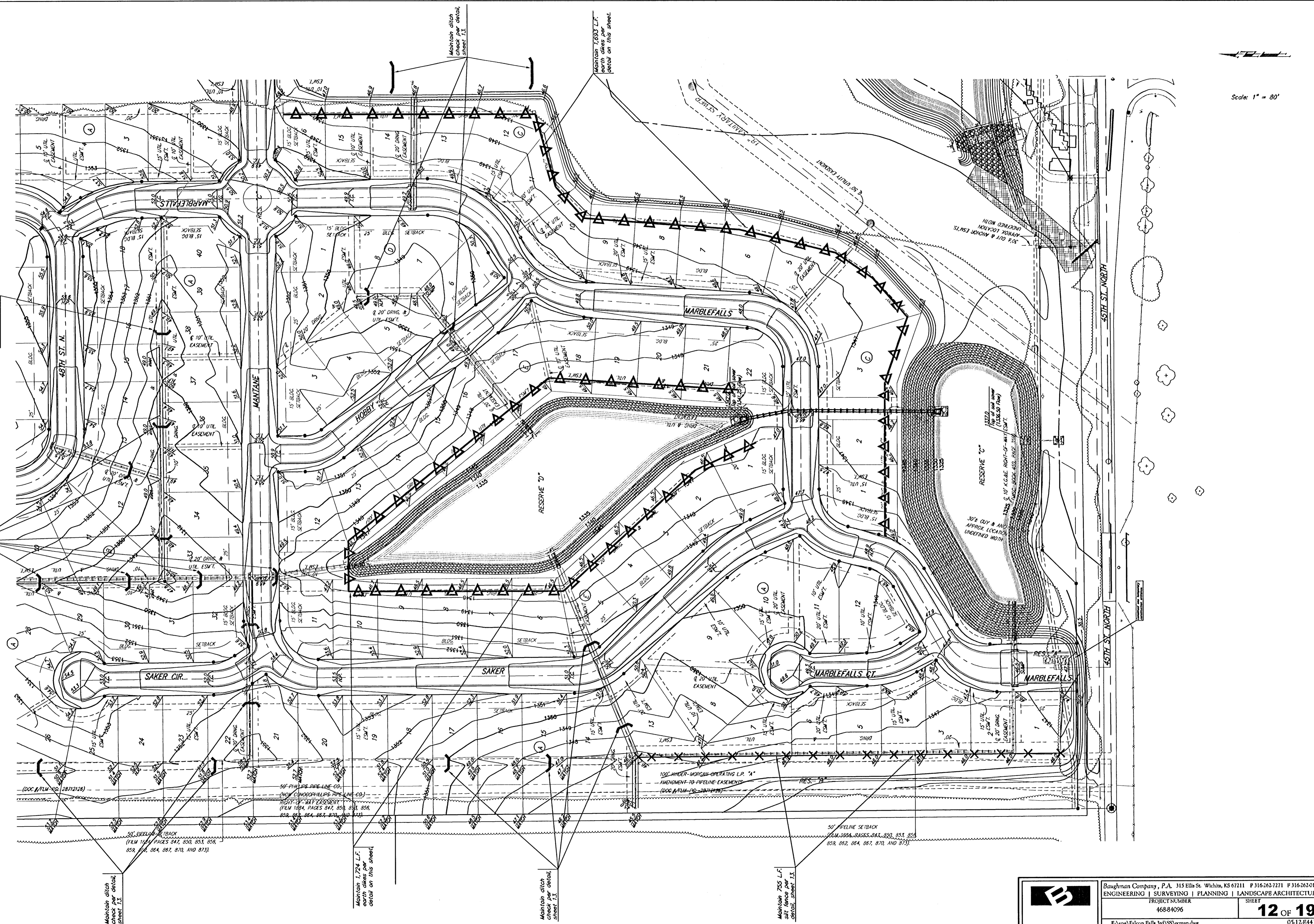
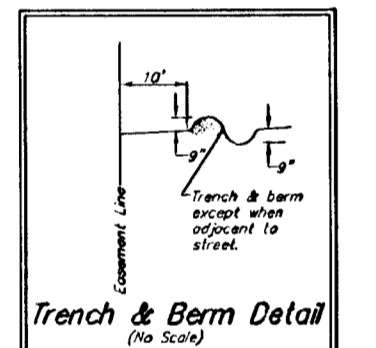
EROSION CONTROL MEASURE	UNITS	QUANTITY
SILT FENCE	L.F.	0
RIPRAP	S.Y.	0
DROP INLET BARRIER	E.A.	0
CURB INLET BARRIER	E.A.	0
STRAW BALE DITCH CHECK	E.A.	0
TRENCH & BERM	L.F.	0
CURLEX	S.Y.	0
POND E.C. BLANKET	S.Y.	0
Construction Entrance	E.A.	1

QUANTITIES ARE FOR INFORMATION ONLY  
CONTRACTOR SHALL VERIFY QUANTITIES PER  
FINAL BID QUANTITY SHEET.

NOTE: Contractor shall remove & replace existing erosion control measures as necessary for construction. Contractor shall be required to maintain all on-site erosion control items until final acceptance by the City of Wichita.

Remove trees ONLY as necessary for construction. Cost of removal to be incidental to lump sum bid item "Site Clearing & Restoration".

Construct one construction entrance per detail, sheet 14.



Scale: 1" = 80'

Baughman Company, P.A. 315 Ella St. Wichita, KS 67211 P 316-262-7271 F 316-262-0149  
ENGINEERING | SURVEYING | PLANNING | LANDSCAPE ARCHITECTURE

PROJECT NUMBER  
468-84096

SHEET  
**12 OF 19**

E:\eng\Falcon Falls 3rd\SS\ssmap.dwg 05-12-2014