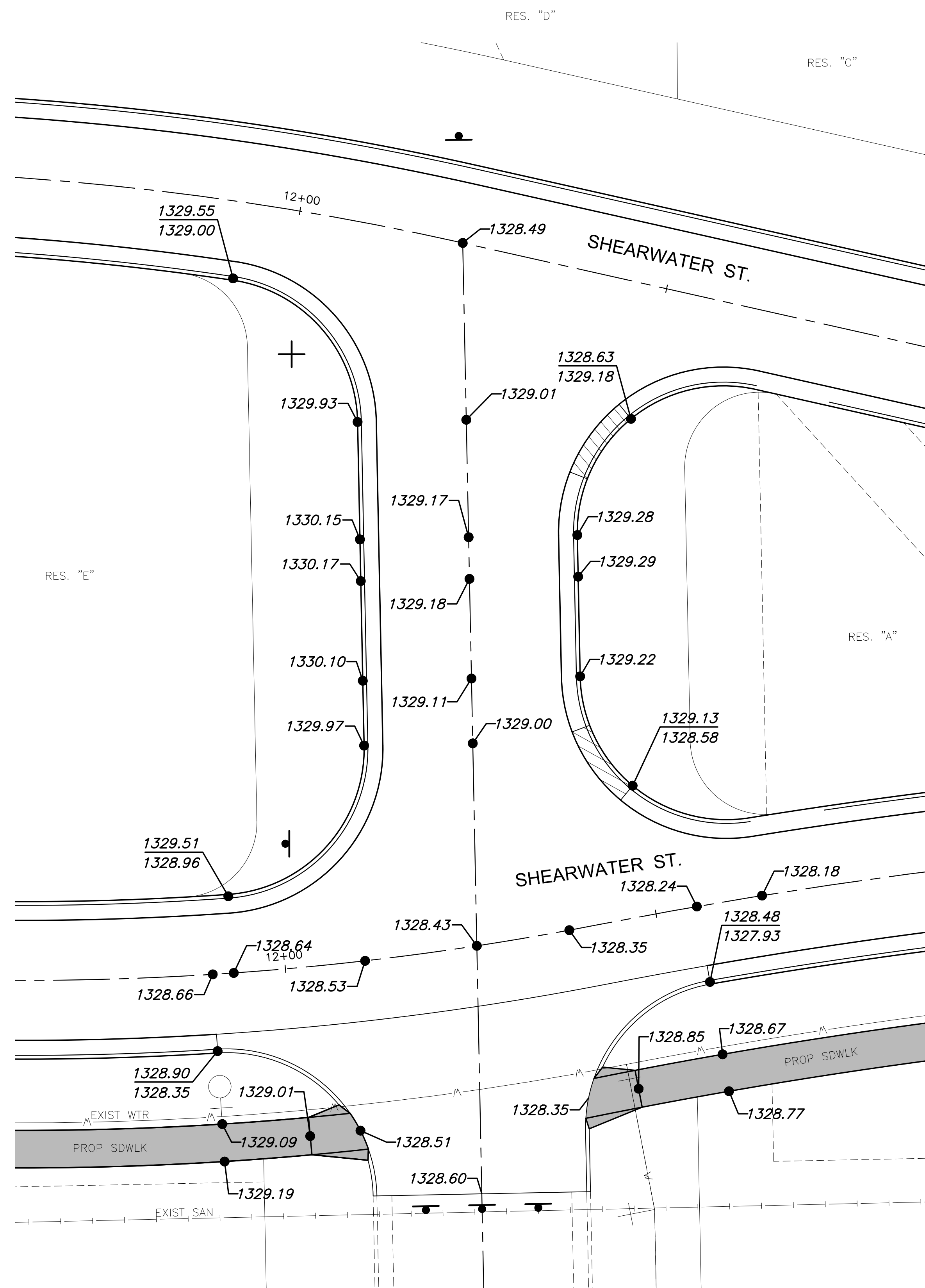
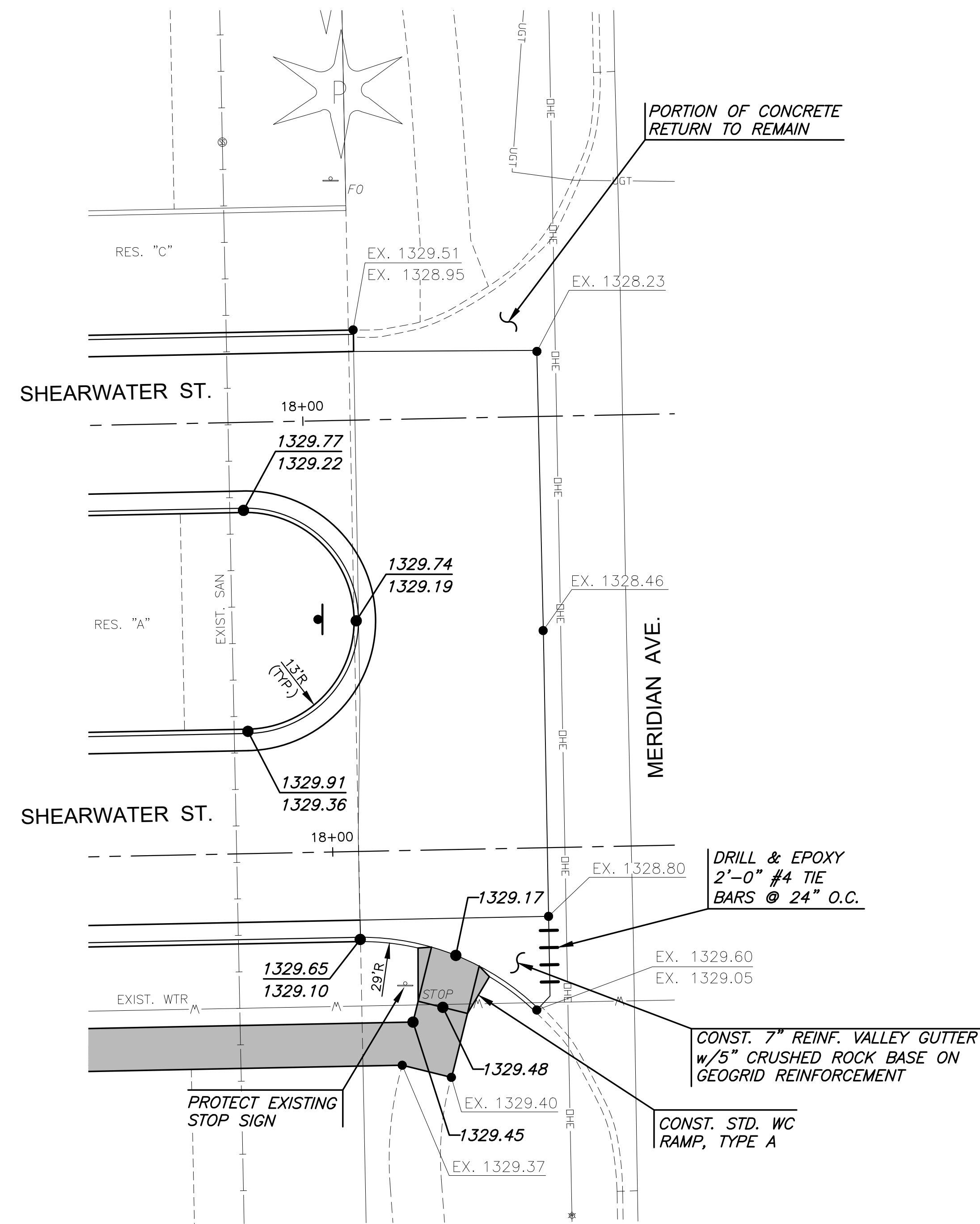


PLOTTED: Tuesday, September 05, 2023 @ 09:26AM

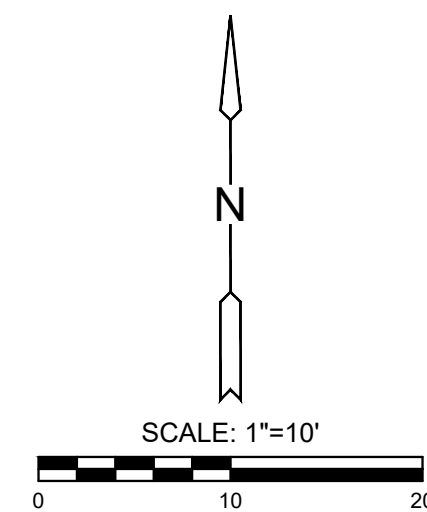
J:\PROJECTS\2023\12\10\10427_PERFECTION_COURTYARDS_AT_MOORINGS\DWG\PAVING\COLLECTOR\2427-65-5026.DWG



DETAIL A
1"=10'



DETAIL B
1"=10'



LEGEND

✦ + STREET SIGN & SIGN LOCATION
(SEE SIGN ASSEMBLY TABLE
FOR TYPE & STATION OF SIGN)

▨ 10' TRANSITION TO REVERSE CURB

PAVING & INCIDENTAL DRAINAGE PLANS FOR
COURTYARDS AT THE MOORINGS
COLLECTOR PHASE - PART B

©2023
MKEC Engineering
All Rights Reserved
www.mkec.com
These drawings and their contents, including, but not limited to, all concepts, designs, & ideas are the exclusive property of MKEC Engineering (MKEC), and may not be used or reproduced in any way without the express consent of MKEC.

INTERSECTION & ENTRY

PROJECT NO.	472-2022-085819B	
DATE	SEPT. 2023	
SCALE	1" = 10'	
DESIGNED	DRAWN	CHECKED
DFL	LAL	SPE

NO.	REVISION	DATE

SHEET NO.