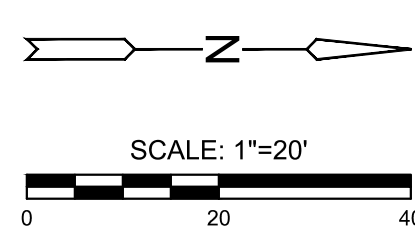
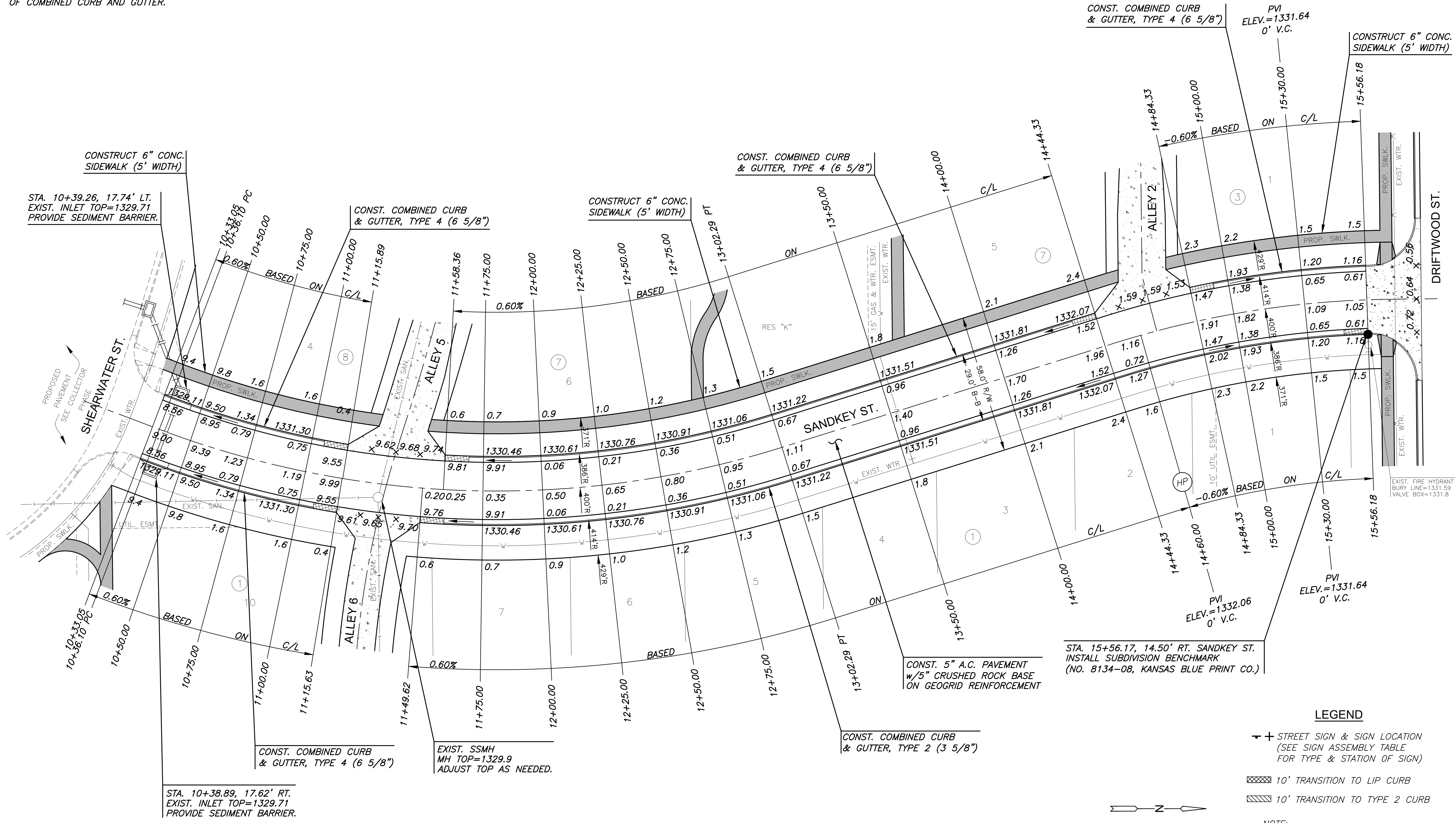


J:\PROJECTS\2021\101010427_PERFECTION_COURTYARDS AT MOORINGS\101010427 CAD\SH1\101010427-05-2024-PH1.DWG
 PLOTTED: Thursday, September 14, 2023 @ 08:12PM

SUBDIVISION BENCH MARKS				
NO.	STREET AND STATION	FROM CL	DESCRIPTION	ELEVATIONS
1	SANDKEY ST., STA. 15+56.17	14.50' RT	TOP OF CURB AT FIRE HYDRANT	
2				

NOTE: CONTRACTOR SHALL INSTALL SUBDIVISION BENCH MARKS ("FLAT SURVEY MARKERS NO. 8134-08 3" TOP DIAMETER" PROVIDED BY KANSAS BLUE PRINT CO., INC.) COSTS TO BE CONSIDERED SUBSIDIARY TO CONSTRUCTION OF COMBINED CURB AND GUTTER.



- LEGEND**
- + STREET SIGN & SIGN LOCATION (SEE SIGN ASSEMBLY TABLE FOR TYPE & STATION OF SIGN)
 - ▨ 10' TRANSITION TO LIP CURB
 - ▨ 10' TRANSITION TO TYPE 2 CURB

NOTE: TOP OF CURB ELEVATIONS SHOWN ARE FOR TYPE 4 CURB. CONSTRUCT CURB AND GUTTER AS NOTED.



PAVING & INCIDENTAL DRAINAGE PLANS FOR
COURTYARDS AT THE MOORINGS
 PHASE 1 - PART B

©2023 MKEC Engineering All Rights Reserved www.mkec.com
 These drawings and their contents, including, but not limited to, all concepts, designs, & ideas are the exclusive property of MKEC Engineering (MKEC), and may not be used or reproduced in any way without the express consent of MKEC.

SANDKEY ST.		
PROJECT NO.	472-2022-085820B	
DATE	SEPT. 2023	
SCALE	1" = 20'	
DESIGNED	DRAWN	CHECKED
DFL	JWC	SPE
NO.	REVISION	DATE
SHEET NO.		
15 OF 51		