

PAVING & INCIDENTAL DRAINAGE PLANS FOR
COURTYARDS AT THE MOORINGS
PHASE 1 - PART B

©2023
MKEC Engineering
All Rights Reserved
www.mkec.com
These drawings and their contents, including, but not limited to, all concepts, designs, & ideas are the exclusive property of MKEC Engineering (MKEC), and may not be used or reproduced in any way without the express consent of MKEC.

SIDEWALK LAYOUT 1 OF 2

PROJECT NO. 472-2022-085820B

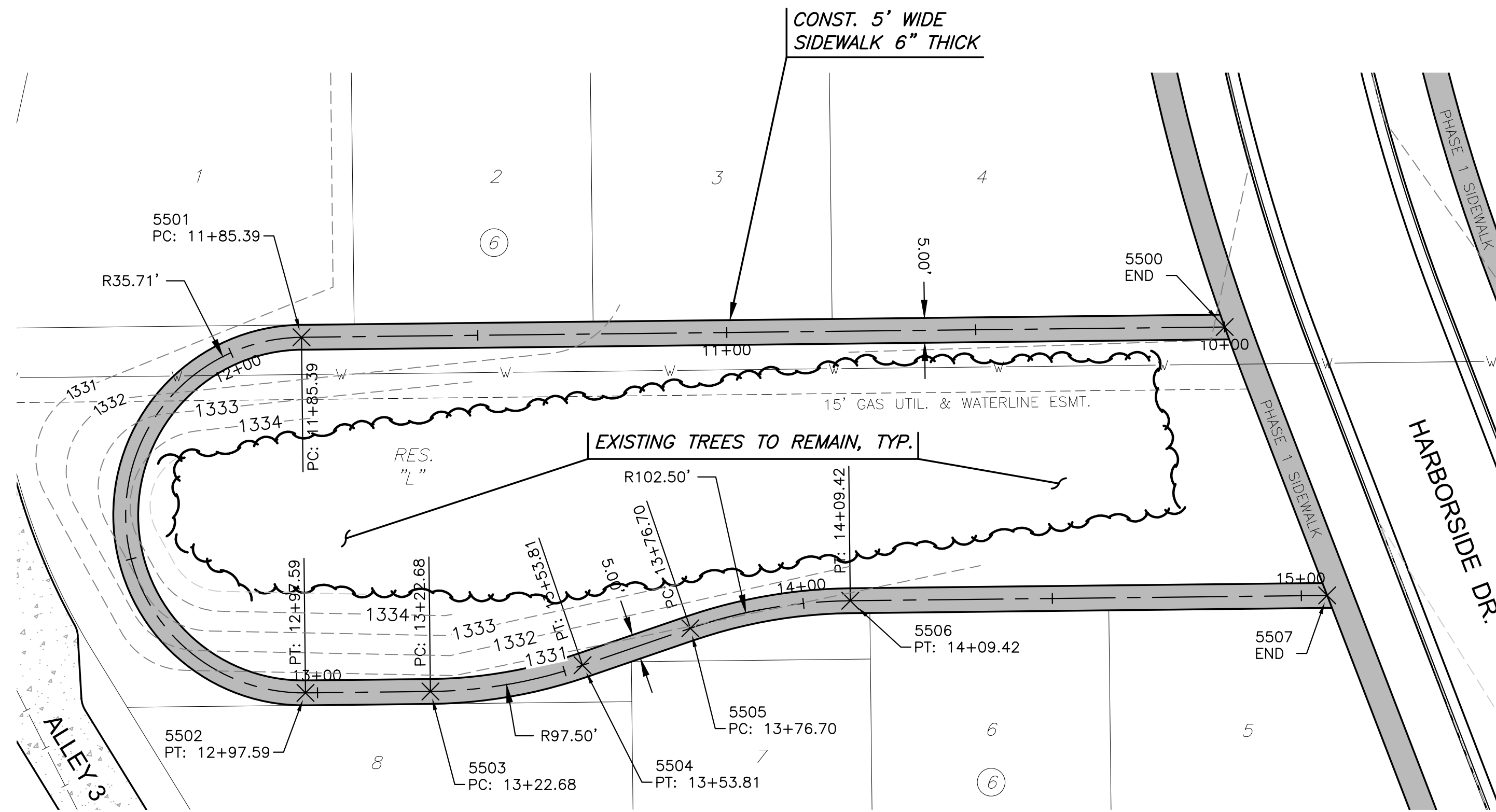
DATE SEPT. 2023

SCALE 1" = 20'

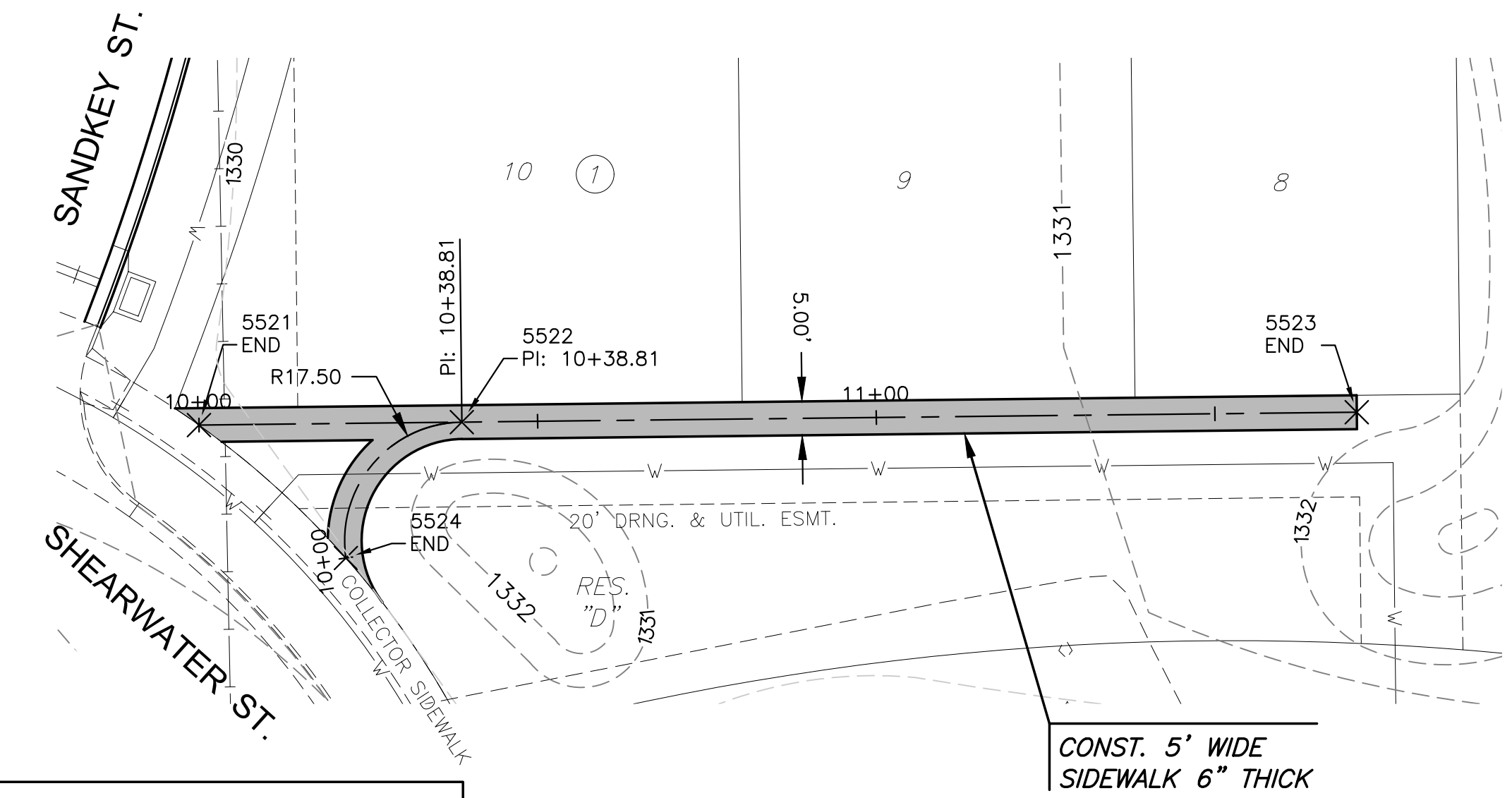
DESIGNED DRAWN CHECKED
DFL JWC SPE

NO.	REVISION	DATE

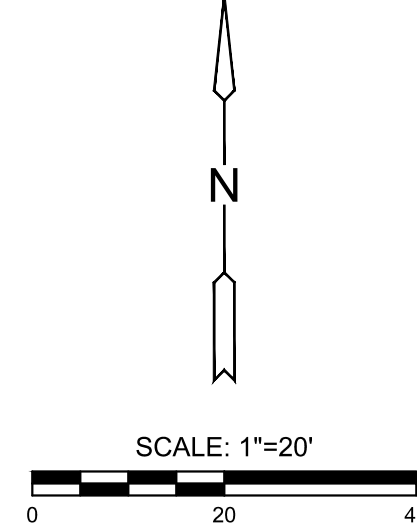
SHEET NO.



- NOTES:**
1. CONTRACTOR SHALL INSTALL SIDEWALK FORMS MIN. 1 WEEK PRIOR TO CASTING CONCRETE SIDEWALK.
 2. CONTRACTOR SHALL ACQUIRE MKEC'S LANDSCAPE ARCHITECT WRITTEN APPROVAL OF FORMWORK PRIOR TO SIDEWALK INSTALLATION.
 3. CONTRACTOR SHALL GIVE MKEC'S REPRESENTATIVE 2 DAYS NOTICE PRIOR TO INSTALLATION OF SIDEWALK FORMS.



PAVING POINTS				
Point #	Northing	Easting	Desc.	Elev.
5500	1714714.61	1637348.28	END	1331.12
5501	1714712.55	1637162.90	PC: 11+85.39	1331.90
5502	1714641.13	1637163.70	PT: 12+97.59	1330.97
5503	1714641.41	1637188.79	PC: 13+22.68	1331.01
5504	1714646.67	1637219.33	PT: 13+53.81	1331.04
5505	1714654.10	1637240.99	PC: 13+76.70	1331.05
5506	1714659.64	1637273.10	PT: 14+09.42	1331.05
5507	1714660.70	1637368.87	END	1330.78
5508	1714715.30	1637410.01	END	1331.00
5509	1714718.47	1637695.19	END	1331.88
5510	1714660.83	1637430.96	END	1330.65
5511	1714662.44	1637575.34	PC: 11+44.38	1331.77
5512	1714657.91	1637590.76	PRC: 11+60.70	1331.87
5513	1714652.56	1637608.98	PT: 11+79.97	1331.94
5514	1714652.75	1637626.00	PC: 11+96.99	1331.88
5515	1714648.96	1637640.24	PRC: 12+11.91	1331.80
5516	1714644.48	1637657.08	PT: 12+29.55	1331.72
5517	1714644.61	1637669.55	PC: 12+42.02	1331.67
5518	1714639.77	1637685.44	PRC: 12+58.90	1331.58
5519	1714634.05	1637704.23	PT: 12+78.84	1331.46
5520	1714634.23	1637720.52	END	1331.33
5521	1714386.01	1637760.34	END	1329.63
5522	1714386.44	1637799.15	PI: 10+38.81	1330.73
5523	1714387.91	1637931.28	END	1331.84
5524	1714366.39	1637782.03	END	1329.77



J:\PROJECTS\2021\101010427_PERFECTION_COURTYARDS AT MOORINGS\DWG 210427 CAD\SHR\505 CIVIL\PAVPH121427-05-500D-PH1.DWG

PLOTTED: Thursday, September 14, 2023 @ 02:24PM