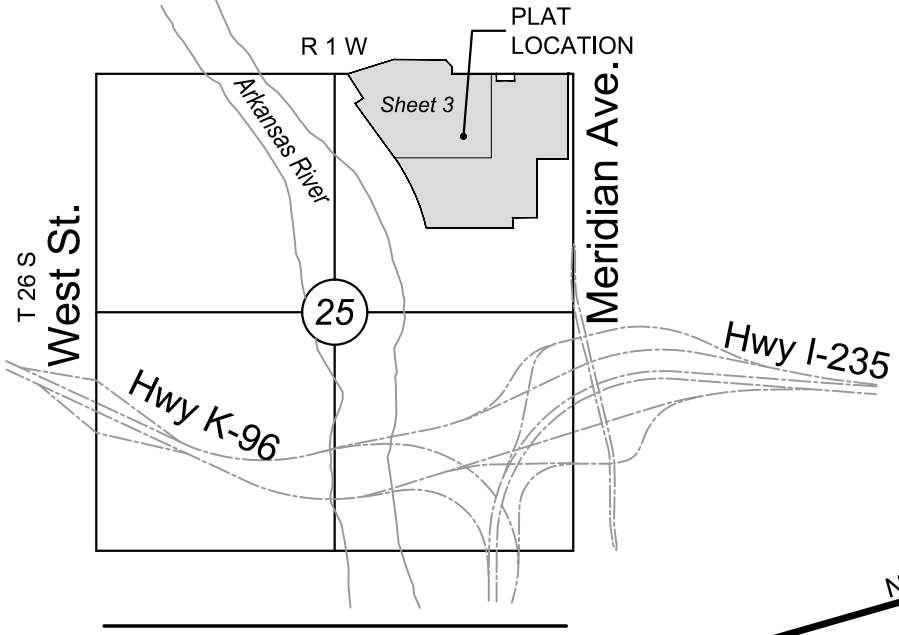


COURTYARDS AT THE MOORINGS ADDITION

AN ADDITION TO WICHITA, SEDGWICK COUNTY, KANSAS



VICINITY MAP

CENTERLINE TABLE

Line #	Length	Direction
L25	36.10'	S20°43'08"W
L26	32.61'	N69°01'46"E
L27	203.34'	S31°34'54"E
L28	86.16'	S31°34'54"E
L29	111.80'	N21°02'21"W
L30	57.27'	N89°21'48"E
L31	146.50'	S17°24'32"E
L32	339.04'	S89°21'48"W
L33	216.94'	S89°21'48"W
L34	67.79'	S12°19'08"W
L35	27.00'	N45°45'31"W
L36	7.06'	N45°45'31"W
L37	53.88'	N00°38'12"W
L38	92.31'	N00°38'12"W
L39	656.77'	S89°21'48"W
L40	25.12'	S00°38'12"E

CENTERLINE CURVE TABLE

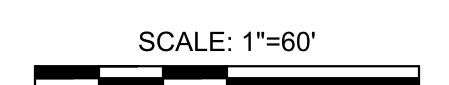
Curve #	Length	Radius	Delta	Chord Direction	Chord Length
C22	582.09'	800.00'	41°14'22"	N89°52'27"E	569.34'
C23	189.10'	600.00'	18°03'27"	N12°00'38"W	188.32'
C24	266.18'	400.00'	38°07'40"	S01°39'18"W	261.30'
C25	110.98'	400.00'	15°53'49"	S82°41'18"E	110.63'
C26	20.75'	400.00'	2°58'19"	S73°15'14"E	20.74'
C27	305.82'	1000.00'	17°31'20"	S80°31'45"E	304.63'
C28	394.16'	1000.00'	22°35'01"	N79°25'04"E	391.61'
C29	44.52'	200.00'	12°45'19"	S25°12'15"E	44.43'
C30	114.93'	150.00'	43°54'02"	S09°37'53"E	112.14'
C31	474.95'	225.00'	120°56'42"	S28°53'27"W	391.55'
C32	241.78'	70.00'	197°53'53"	S02°50'17"E	138.30'
C33	117.49'	150.00'	44°52'41"	N68°11'52"W	114.51'
C34	118.13'	150.00'	45°07'19"	N23°11'52"W	115.10'
C35	142.44'	400.00'	20°24'09"	N10°50'17"W	141.68'
C36	117.09'	400.00'	16°46'20"	S09°01'22"E	116.67'
C37	148.03'	100.00'	84°48'44"	S46°57'26"W	134.88'

MINIMUM PAD ELEVATIONS
LOWEST OPENINGS

LOTS inclusive	BLOCK	ELEVATION NAVD 88
1-10	1	1329.4
1-27	2	1329.4
1-5	3	1329.4
1-4	4	1329.4
1-5	5	1329.4
1-8	6	1329.4
1-10	7	1329.4
1-4	8	1329.4
1-5	9	1329.4
1	10	1329.4
1	11	1329.4

LEGEND

- Date of Survey: 12/20/2021
- ⊠ = Section Corner Monument Found
 - ⊙ = Found 3/8" rebar w/ MKEC CLS 39 id. cap or see annotation for type
 - ⊙ = Set 3/8" rebar w/ MKEC CLS 39 id. cap
 - ⊙ = Benchmark
 - (M) = Measured
 - (P) = Platted
 - (D) = Described
 - (CM) = Calculated from Measurement
 - (CP) = Calculated from Plat
 - (CD) = Calculated from Described
 - Drng. = Drainage
 - Util. = Utility
 - Sdwk. = Sidewalk
 - St. = Street
 - Esmt. = Easement
 - ① = Lot
 - ① = Block



SCALE: 1"=60'

Basis of Bearings: Kansas coordinate system of 1983 south zone bearing of N01°08'35"W on the east line of Northeast Quarter, Section 25, Township 26 South, Range 1 West of the Sixth Principal Meridian, Sedgwick County, Kansas.

This plat is surveyed and platted on NAD83 using Kansas state plane south zone coordinates, modified to the surface, having a combined adjustment scale factor of 1.000120014401728

BENCHMARK

BM#1 Chiseled "X" top of north curb on north access drive to Meritrust Credit Union from Meridian Ave. 45' northwest of sanitary manhole, 40 feet east of back of curb corner, 29 feet north of south access drive back of curb. Elev.=1329.89 NAVD88

FOR REFERENCE ONLY



CONTINUED ON PAGE 4

CONTINUED ON PAGE 4

CONTINUED ON PAGE 2

CONTINUED ON PAGE 2