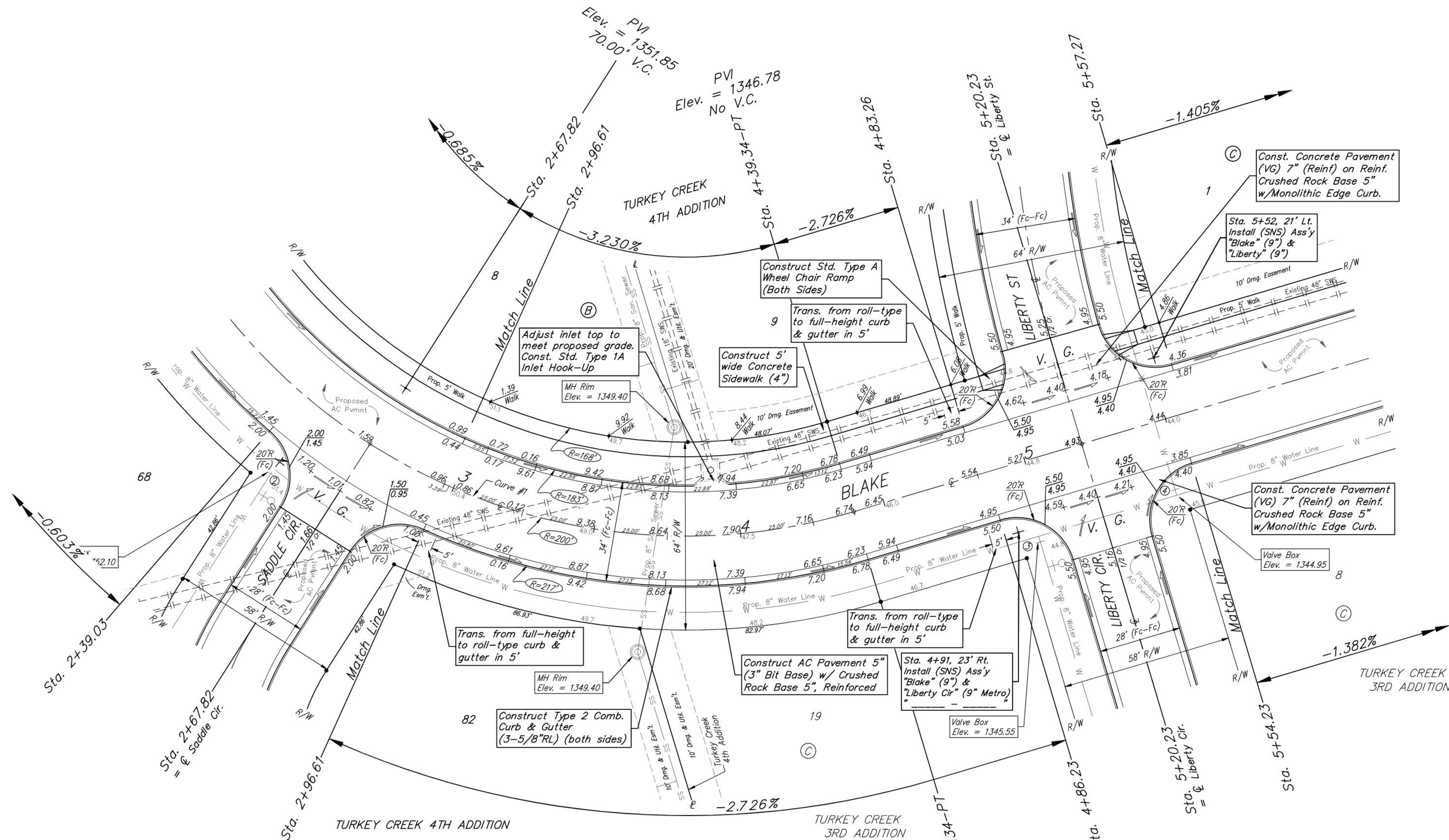
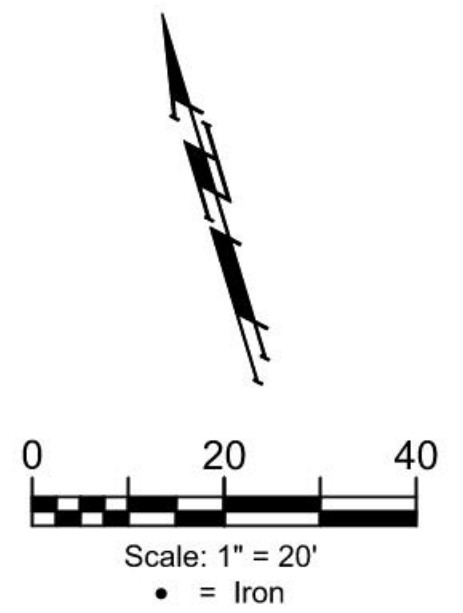


**BENCHMARKS:**  
 RR spike in asphalt, SW Cor.,  
 N1/2, SW1/4, Sec. 34, TWP. 26-S,  
 R-2-E.  
 Elev. = 1400.59 NAVD

RR spike in E. face of power pole,  
 174± N. of S. line, N1/2, SW1/4  
 & 49± E. of W. line, SW1/4, SEC.  
 34, TWP. 26-S, R-2-E.  
 Elev. = 1398.64 NAVD88

RR spike in S. face of power pole,  
 294± S. of N. line, SW1/4, &  
 48± E. of W. line, SW1/4, SEC. 34,  
 TWP. 26-S, R-2-E.  
 Elev. = 1386.14 NAVD88



Curve #1  
 Curve Data Based on Centerline  
 Rad. = 200' Delta = 89°47'29" Tangent = 199.27'  
 Arc = 313.43' L.C. = 282.33' Def./Ft. = 8.59440 Min.

Station	Arc	Face Chord Lengths		Defl.	Total Defl.
		8' Left	8' Right		
1+25.91	-	-	-	0'00"00"	0'00"00"
1+50.00	24.09'	21.07'	27.08'	3'27"02"	3'27"02"
1+75.00	25.00'	21.86'	28.11'	3'34"52"	7'01"54"
2+00.00	25.00'	21.86'	28.11'	3'34"52"	10'36"46"
2+25.00	25.00'	21.86'	28.11'	3'34"51"	14'11"37"
2+39.03	14.03'	12.27'	15.78'	2'00"35"	16'12"12"
2+50.00	10.97'	9.60'	12.34'	1'34"17"	17'46"29"
2+75.00	25.00'	21.86'	28.11'	3'34"51"	21'21"20"
2+96.61	21.61'	18.90'	24.30'	3'05"44"	24'27"04"
3+00.00	3.39'	2.97'	3.81'	0'29"08"	24'56"12"
3+25.00	25.00'	21.86'	28.11'	3'34"52"	28'31"04"
3+50.00	25.00'	21.86'	28.11'	3'34"51"	32'05"55"
3+75.00	25.00'	21.86'	28.11'	3'34"52"	35'40'47"
4+00.00	25.00'	21.86'	28.11'	3'34"51"	39'15'38"
4+25.00	25.00'	21.86'	28.11'	3'34"52"	42'50'30"
4+39.34	14.34'	12.54'	16.13'	2'03"15"	44'53'45"

Roll type curb & gutter to be constructed on the pavement on this sheet.  
 Top of curb elevation are given for full height curb.



**BAUGHMAN COMPANY**  
 315 Ellis St.  
 Wichita, KS 67211  
 316-262-7271  
 BaughmanCo.com

TURKEY CREEK 4TH ADDITION - PHASE III

**BLAKE ST**

Sta. 2+96.61 to Sta. 5+57.27  
 Street Paving Improvements

PROJECT NUMBER:  
 472-2020-085620

DESIGN: DMV DRAWN: JAK

DATE: Sept. 18, 2023

SHEET OF  
**8 28**

File: E:\Projects\Turkey Creek 4th Addition\Engineering\Phase 3\STR\_22-06-E217\STR\_22-06-E217.dwg