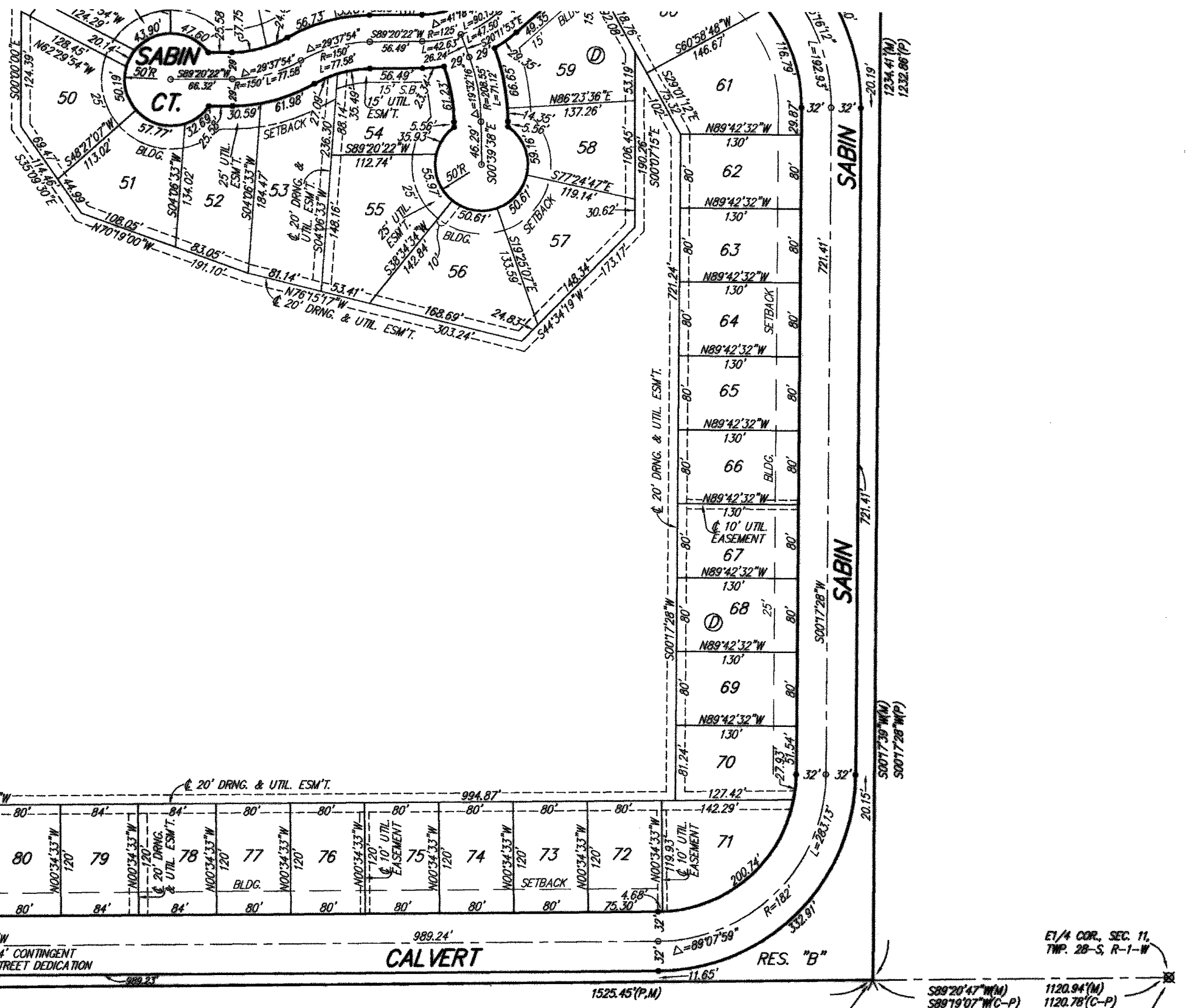


BLUE LAKE ADDITION WICHITA, SEDGWICK COUNTY, KANSAS

WICHITA-VALLEY CENTER FLOODWAY
(D.C.C. NO. A-30410)

SEE DETAIL "A"

FOR REFERENCE ONLY
NOT TO SCALE



BENCHMARK:
Hoover and MacArthur (.39th St. South)
COW Bench Mark, NE corner of intersection.
41.60' N. of center line.
69.00' E. of center line.
20.00' E. of guy pole.
79.80' N. of Section corner iron.
City 121.22' ft
MSL 1308.62' ft

By Ditch and MacArthur
COW Bench Mark, West bound lane,
east end of bridge.
East of Hoover.
City 116.52' ft
MSL 1303.92' ft

LOT	BLOCK	ELEVATION
2-53	D	96.5
55-90	D	96.5
96-98	D	96.5

- ◆ = #4 REBAR W/ "BAUGHMAN" CAP (SET)
 - ◇ = #5 REBAR (FOUND)
 - ◇ = 100# STONE (FOUND)
 - = #4 REBAR W/ "SAVAY" CAP (FOUND)
 - = CONC. FLOOD CONTROL R/W MONUMENT (FOUND)
 - = 1" IRON (FOUND)
 - △ = 1/2" IRON W/ TRIMBLE (FOUND)
 - △ = 1/2" IRON (FOUND)
 - = 1" IRON W/ TRIMBLE (FOUND)
 - = STONE (FOUND)
- (M) = MEASURED
(P) = PLATTED
(D) = DESCRIBED
(C) = CALCULATED
(C-D) = CALCULATED PER DESCRIBED INFO.
(C-P) = CALCULATED PER PLATTED INFO.
(DI) = DESCRIBED CHORD DISTANCE BETWEEN R/W MONUMENTS
(MI) = MEASURED CHORD DISTANCE BETWEEN R/W MONUMENTS

DETAIL "A"
(NO SCALE)

#5 REBAR (FOUND)
0.30' E. OF PROP. LINE

CH. BRG. - N07°05'47"W (M)
CH. - 1.40'(M)
R/W MON. (FOUND) TO #5 REBAR (FOUND)

R/W MONUMENT (FOUND)
0.54' E. OF PROP. LINE &
0.87' N. OF N. LINE, SW 1/4

PROPERTY LINE
R-22306.60'(C-D)

CH. BRG. - N05°08'53"W (M)
CH. - 35.15'(M)
CH. - 35.00'(D)

R/W MONUMENT (FOUND)
0.02' W. OF PROP. LINE

50' X 50' KGAE INCENTURE OF CONVEYANCE
(MISC. BK. 559, PG. 281)

CH. BRG. - N07°24'28"W (M)
CH. - 48.42'(M)

R/W MONUMENT (FOUND)
0.02' E. OF PROP. LINE

CH. BRG. - N07°24'28"W (M)
CH. - 48.42'(M)

R/W MONUMENT (FOUND)
0.10' W. OF PROP. LINE

CH. BRG. - N07°24'28"W (M)
CH. - 48.42'(M)

Sedgwick County
Register of Deeds - Bill Mack
DOC # FLM-PG-26611551
Receipt # 1855474
Page Recorded 3
Recording Fee: \$60.00
Cashed Initials: DM
Authorized By: [Signature]
Date Recorded: 9/28/2004 3:50:55 PM

PAGE 2 OF 3
BAUGHMAN COMPANY P. A.
ENGINEERING, SURVEYING, & PLANNING
318-282-7271 • 318 ELLIS • WICHITA, KANSAS 67211

**BAUGHMAN
COMPANY**

315 Ellis St.
Wichita, KS 67211
316-262-7271
BaughmanCo.com

BLUE LAKE ADD./2ND ADD.
PHASE 1

**COPY OF
PLAT**

WATER DISTRIBUTION
SYSTEM

PROJECT NUMBER:
448-2023-003059

DESIGN: DRAWN:
DATE: 9/25/2023

SHEET
19 OF **20**

DC 167 - 1B

File: E:\Projects\Blue Lake 2nd Addition\Engineering\Phase 1\Witr 23-03-E469Water.dwg