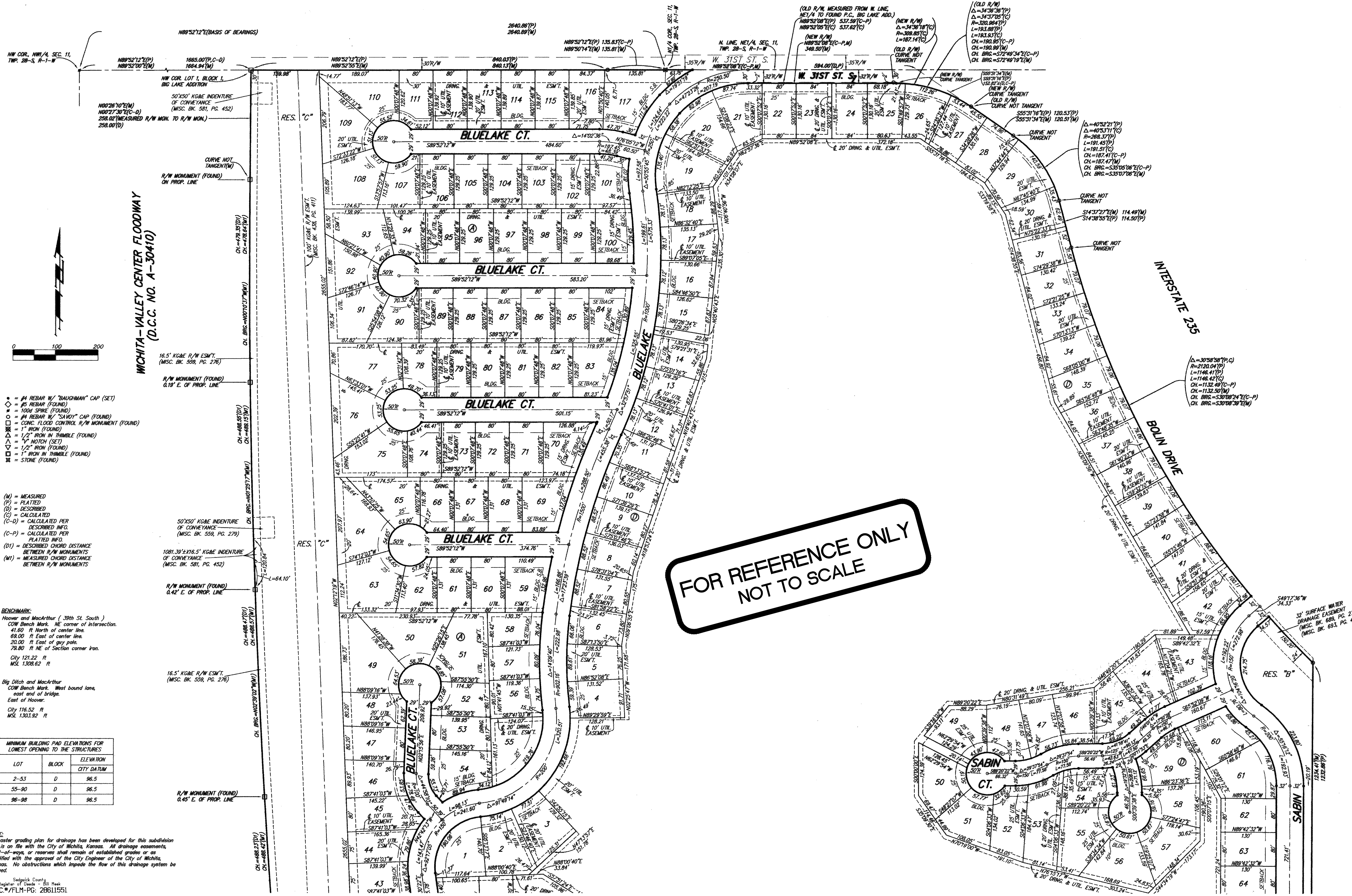


BLUE LAKE ADDITION WICHITA, SEDGWICK COUNTY, KANSAS



- = #4 REBAR W/ "BAUGHMAN" CAP (SET)
- ◊ = #5 REBAR (FOUND)
- = 100# SPIRE (FOUND)
- ◻ = #4 REBAR W/ "SAVOY" CAP (FOUND)
- ◻ = CONC. FLOOD CONTROL R/W MONUMENT (FOUND)
- ⊠ = 1" IRON (FOUND)
- △ = 1/2" IRON W/ TRIMBLE (FOUND)
- ▽ = 1" NOTCH (SET)
- ▽ = 1/2" IRON (FOUND)
- ▽ = 1" IRON W/ TRIMBLE (FOUND)
- ⊞ = STONE (FOUND)

- (M) = MEASURED
- (P) = PLATTED
- (D) = DESCRIBED
- (C) = CALCULATED
- (C-D) = CALCULATED PER DESCRIBED INFO.
- (C-P) = CALCULATED PER PLATTED INFO.
- (DI) = DESCRIBED CHORD DISTANCE BETWEEN R/W MONUMENTS
- (MI) = MEASURED CHORD DISTANCE BETWEEN R/W MONUMENTS

BENCHMARK:
Hoover and MacArthur (.39th St. South)
COW Bench Mark, NE corner of intersection.
41.80' N. of center line.
69.00' E. of center line.
20.00' E. of guy pole.
79.80' N.E. of Section corner iron.
City 121.22' ft
MSL 1308.62' ft

Big Ditch and MacArthur
COW Bench Mark, West bound line, east end of bridge.
City 116.52' ft
MSL 1303.92' ft

LOT	BLOCK	ELEVATION CITY DATUM
2-53	D	96.5
55-80	D	96.5
96-98	D	96.5

NOTE:
A master grading plan for drainage has been developed for this subdivision and is on file with the City of Wichita, Kansas. All drainage easements, right-of-ways, or reserves shall remain of established grades or as modified with the approval of the City Engineer of the City of Wichita, Kansas. No obstructions which impede the flow of this drainage system be allowed.

Sedgwick County
Register of Deeds - Bill Neal
DOC. # 1305474 - PG. 28611551
Recorded Fee: \$60.00
Pages Recorded: 3
Cashed Initials: DM
Authorized By:
Date Recorded: 9/28/2004 3:50:56 PM

BAUGHMAN COMPANY
315 Ellis St.
Wichita, KS 67211
316-262-7271
BaughmanCo.com

BLUE LAKE ADD. 2ND ADD. PHASE 1

COPY OF PLAT

WATER DISTRIBUTION SYSTEM

PROJECT NUMBER:
448-2023-003059

DESIGN: DRAWN:
DATE: 9/25/2003

SHEET **20** OF **20**

PAGE 3 OF 3
BAUGHMAN COMPANY P.A.
ENGINEERING, SURVEYING, & PLANNING
316-262-7271 • 315 ELLIS • WICHITA, KANSAS 67211