

BENCHMARKS:
 BM #1 - "□" on top of curb,
 north side of Calvert, 14.7' south of
 the most southerly corner common
 to Lots 83 and 84, Block D, Blue
 Lake Addition.
 Elev. = 103.95 City Datum

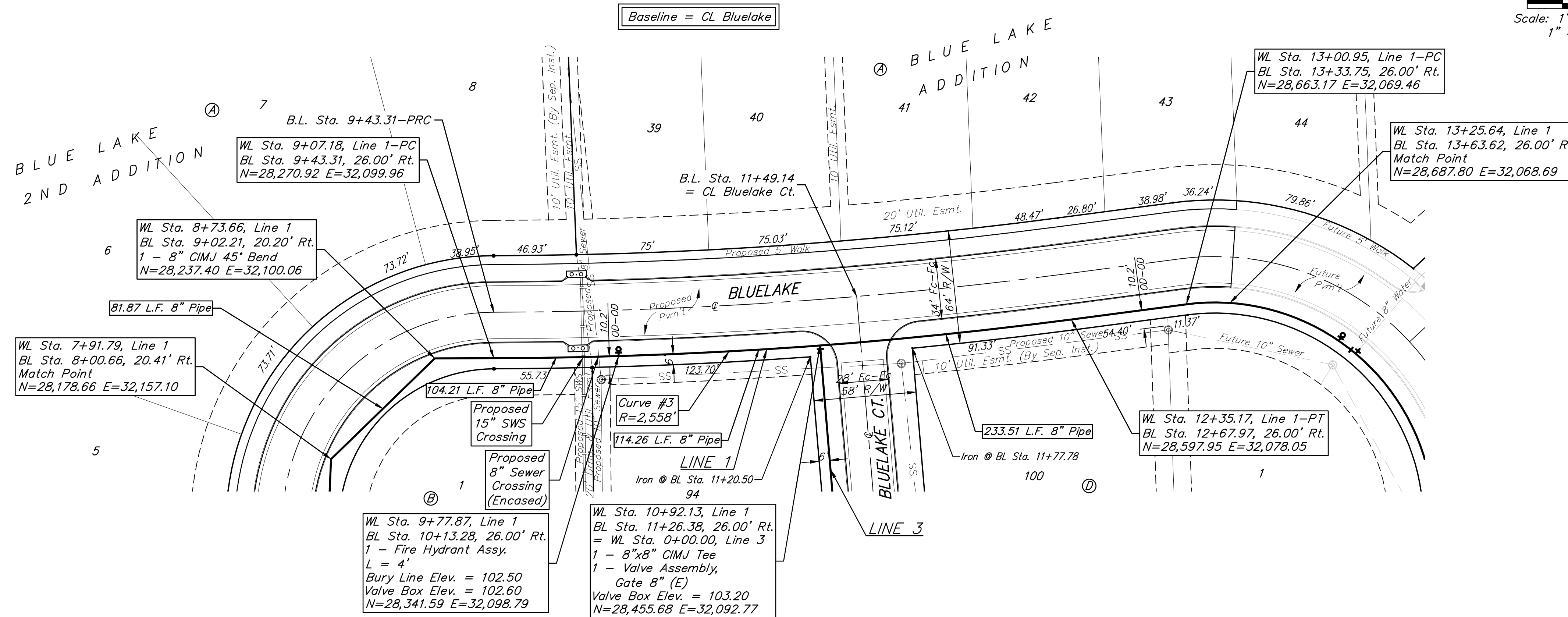
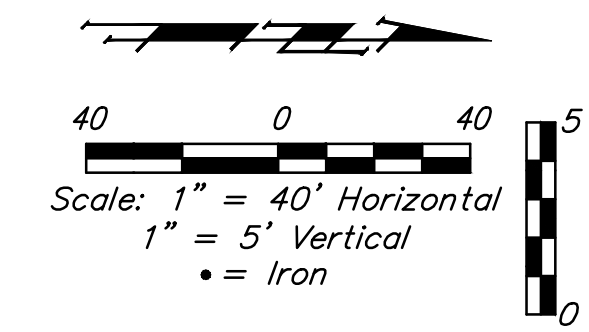
BM #2 - "□" with + cut on
 northwest face of drop inlet on
 north side of MacArthur Road, 79.4'
 North of centerline of MacArthur
 Road and 152.3' E/SE of southwest
 corner of Reserve "C", Blue Lake
 3rd Addition.
 Elev. = 95.55 City Datum

Trees in conflict with water line
 construction to be removed by
 contractor. To be paid for as lump sum
 bid item "Site Clearing"

All other trees shall remain and be
 protected from damage during
 construction. Overhanging limbs shall be
 trimmed by the Contractor using a chain
 saw only as necessary for construction
 and with approval of the Engineer. Cost
 of tree trimming to be included in bid
 item "Site Clearing"

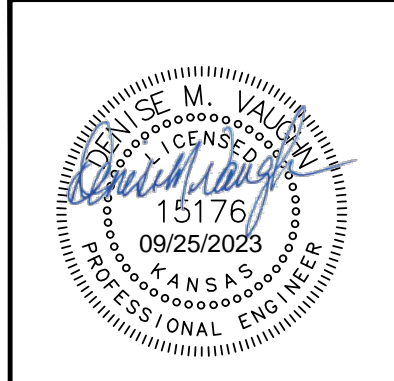
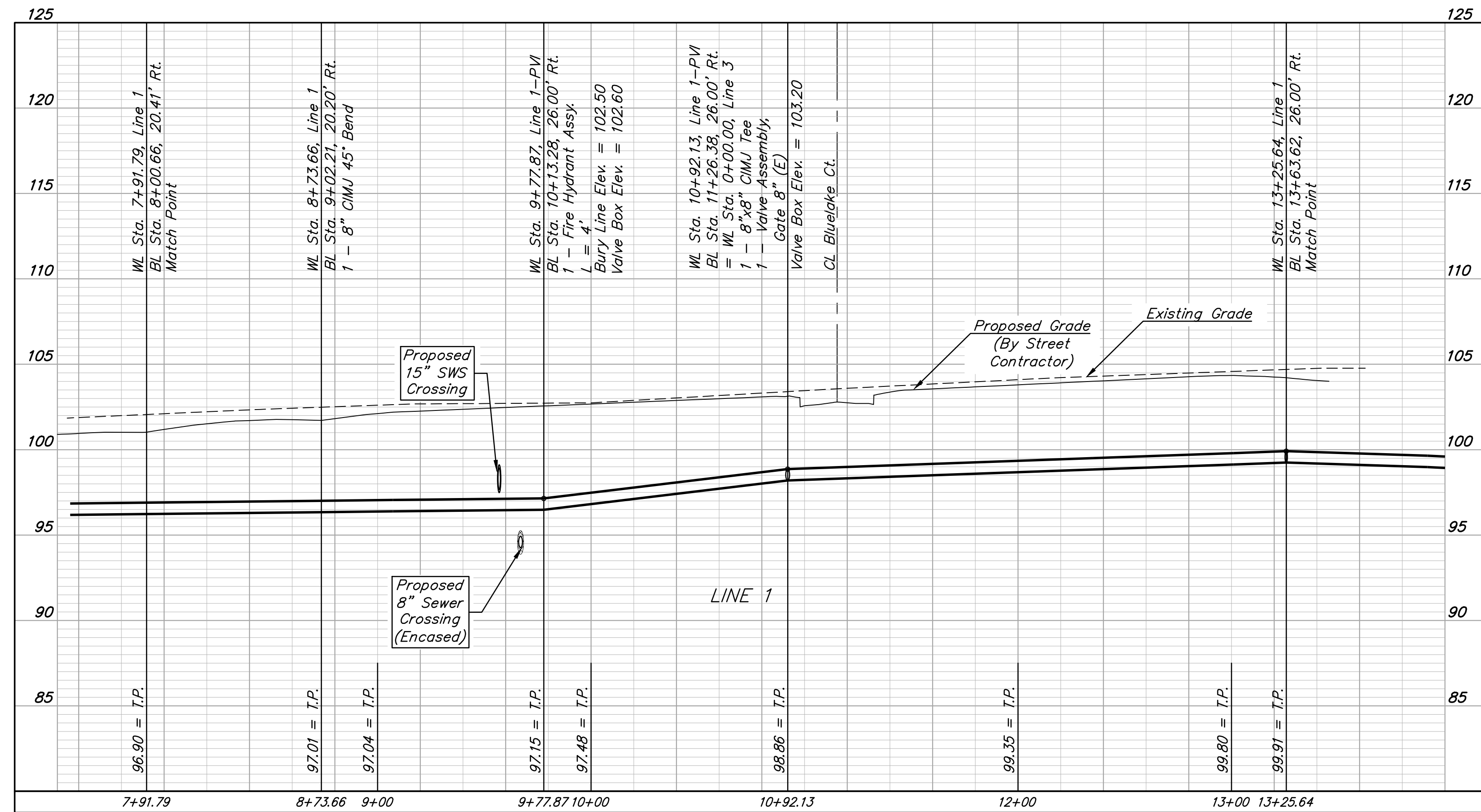
Pipe layout is shown with
 horizontal and vertical
 deflections. Contractor to use
 short pipe lengths, high
 deflection couplers, and
 manufacturer recommended
 pipe deflections to meet
 planned alignment.

Contractor to maintain a
 minimum of 10' of horizontal
 separation (O.D.-O.D.) between
 sanitary sewer and water line.



Curve #3
 Curve Data Based on Waterline
 Rad. = 2558' Delta = 7°20'48" Tangent = 164.22'
 Arc = 393.77' L.C. = 327.77' Def./Ft. = 0.55972 Min.

Station	Arc	Chord Lengths		Total Defl.
		8' Right	Defl.	
9+07.18	-	-	0°00'00"	0°00'00"
9+25.00	17.82'	14.89'	0°09'58"	0°09'58"
9+50.00	25.00'	20.89'	0°14'00"	0°23'58"
9+75.00	25.00'	20.89'	0°14'00"	0°37'58"
9+77.87	2.87'	2.40'	0°01'36"	0°39'34"
10+00.00	22.13'	18.49'	0°12'23"	0°51'57"
10+25.00	25.00'	20.89'	0°14'00"	1°05'57"
10+50.00	25.00'	20.89'	0°13'59"	1°19'56"
10+75.00	25.00'	20.89'	0°14'00"	1°33'56"
10+92.13	17.13'	14.31'	0°09'35"	1°43'31"
11+00.00	7.87'	6.58'	0°04'24"	1°47'55"
11+25.00	25.00'	20.89'	0°14'00"	2°01'55"
11+50.00	25.00'	20.89'	0°14'00"	2°15'55"
11+75.00	25.00'	20.89'	0°13'59"	2°29'54"
12+00.00	25.00'	20.89'	0°14'00"	2°43'54"
12+25.00	25.00'	20.89'	0°13'59"	2°57'53"
12+50.00	25.00'	20.89'	0°14'00"	3°11'53"
12+75.00	25.00'	20.89'	0°14'00"	3°25'53"
13+00.95	25.95'	21.68'	0°14'31"	3°40'24"



**BAUGHMAN
 COMPANY**

315 Ellis St.
 Wichita, KS 67211
 316-262-7271
 BaughmanCo.com

BLUE LAKE ADD./2ND ADD.
 PHASE 1

LINE 1

WATER DISTRIBUTION
 SYSTEM

PROJECT NUMBER:
 448-2023-003059

DESIGN: DMV DRAWN: TMS

DATE: 9/25/2023

SHEET **3** OF **20**

File: E:\Projects\Blue Lake 2nd Addition\Engineering\Phase 1\Wtr 23-03-03-E469Water.dwg