

BENCHMARKS:

BM #1 - "□" on top of curb, north side of Calvert, 14.7' south of the most southerly corner common to Lots B3 and B4, Block D, Blue Lake Addition.
Elev. = 103.95 City Datum

BM #2 - "□" with + cut on northwest face of drop inlet on north side of MacArthur Road, 79.4' North of centerline of MacArthur Road and 152.3' E/SE of southwest corner of Reserve "C", Blue Lake 3rd Addition.
Elev. = 95.55 City Datum

Trees in conflict with water line construction to be removed by contractor. To be paid for as lump sum bid item "Site Clearing"

All other trees shall remain and be protected from damage during construction. Overhanging limbs shall be trimmed by the Contractor using a chain saw only as necessary for construction and with approval of the Engineer. Cost of tree trimming to be included in bid item "Site Clearing"

Pipe layout is shown with horizontal and vertical deflections. Contractor to use short pipe lengths, high deflection couplers, and manufacturer recommended pipe deflections to meet planned alignment.

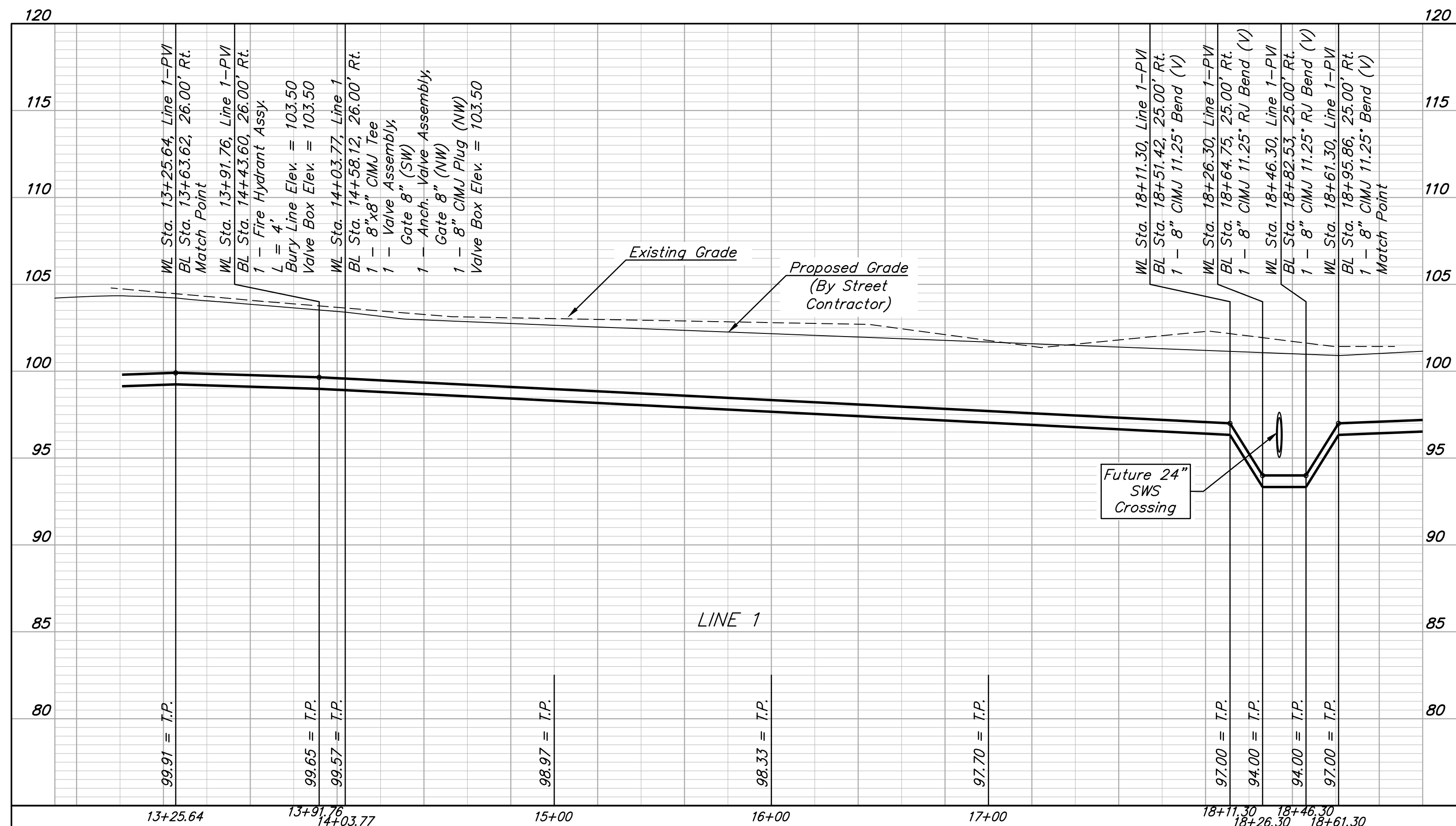
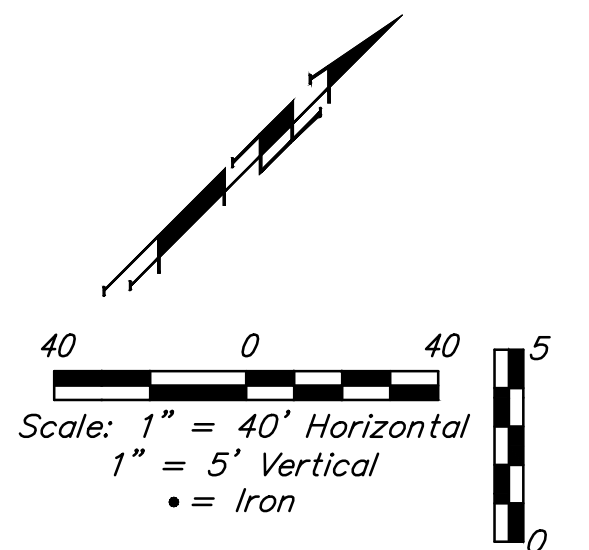
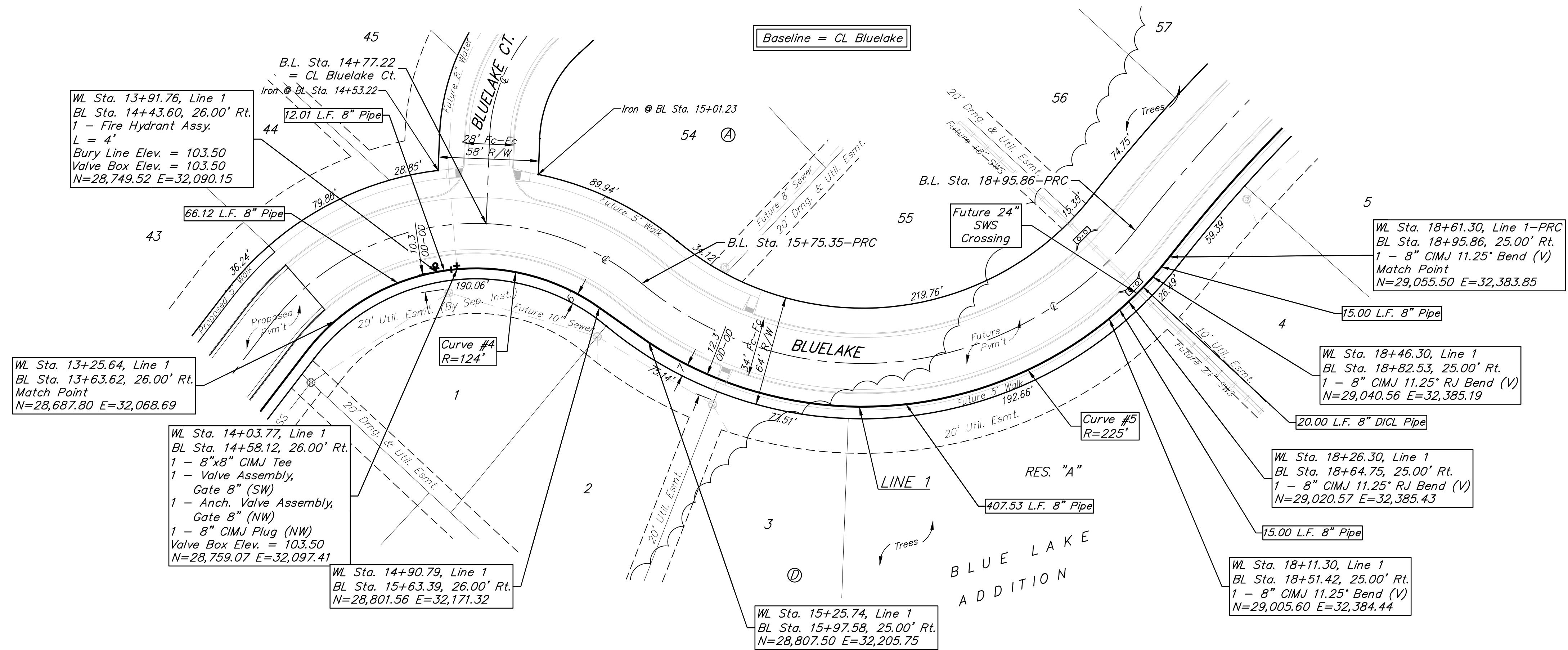
Contractor to maintain a minimum of 10' of horizontal separation (O.D.-O.D.) between sanitary sewer and water line.

Contractor to maintain a minimum of 2' of vertical separation (O.D.-O.D.) between sanitary sewer and water line.

Pipe layout is shown to be circular for radii under 200'. Contractor may use short pipe lengths, high deflection couplers, and manufacturer recommended pipe deflections and pipe bending to meet planned alignment.

Curve #4				
Curve Data Based on Waterline				
Rad. = 124' Delta = 87°43'03" Tangent = 119.16'				
Arc = 189.84' L.C. = 171.83' Def./Ft. = 13.86180 Min.				
Chord Lengths				
Station	Arc	8' Right	Defl.	Total Defl.
13+00.95	-	-	0°00'00"	0°00'00"
13+25.00	24.05'	22.46'	5°33'23"	5°33'23"
13+50.00	25.00'	23.35'	5°46'32"	11°19'55"
13+75.00	25.00'	23.35'	5°46'33"	17°06'28"
13+91.76	16.76'	15.67'	3°52'19"	20°58'47"
14+00.00	8.24'	7.71'	1°54'14"	22°53'01"
14+03.77	3.77'	3.53'	0°52'15"	23°45'16"
14+25.00	21.23'	19.84'	4°54'17"	28°39'33"
14+50.00	25.00'	23.35'	5°46'33"	34°26'06"
14+75.00	25.00'	23.35'	5°46'33"	40°12'39"
14+90.79	15.79'	14.76'	3°38'53"	43°51'32"

Curve #5				
Curve Data Based on Waterline				
Rad. = 225' Delta = 85°27'04" Tangent = 207.81'				
Arc = 335.56' L.C. = 305.32' Def./Ft. = 7.63957 Min.				
Chord Lengths				
Station	Arc	8' Right	Defl.	Total Defl.
15+25.74	-	-	0°00'00"	0°00'00"
15+50.00	24.26'	25.11'	3°05'20"	3°05'20"
15+75.00	25.00'	25.88'	3°11'00"	6°16'20"
16+00.00	25.00'	25.88'	3°10'59"	9°27'19"
16+25.00	25.00'	25.88'	3°10'59"	12°38'18"
16+50.00	25.00'	25.88'	3°11'00"	15°49'18"
16+75.00	25.00'	25.88'	3°10'59"	19°00'17"
17+00.00	25.00'	25.88'	3°10'59"	22°11'16"
17+25.00	25.00'	25.88'	3°11'00"	25°22'16"
17+50.00	25.00'	25.88'	3°10'59"	28°33'15"
17+75.00	25.00'	25.88'	3°10'59"	31°44'14"
18+00.00	25.00'	25.88'	3°11'00"	34°55'14"
18+11.30	11.30'	11.70'	1°26'19"	36°21'33"
18+26.30	15.00'	15.53'	1°54'36"	38°16'09"
18+46.30	20.00'	20.70'	2°32'47"	40°48'56"
18+50.00	3.70'	3.83'	0°28'16"	41°17'12"
18+61.30	11.30'	11.70'	1°26'20"	42°43'32"



BAUGHMAN COMPANY

315 Ellis St.
Wichita, KS 67211
316-262-7271
BaughmanCo.com

BLUE LAKE ADD./2ND ADD.
PHASE 1

LINE 1

WATER DISTRIBUTION SYSTEM

PROJECT NUMBER:
448-2023-003059

DESIGN: DMV DRAWN: TMS

DATE: 9/25/2023

SHEET **4** OF **20**

File: E:\Projects\Blue Lake 2nd Addition\Engineering\Phase 1\Wtr 23-03-E469\Water.dwg