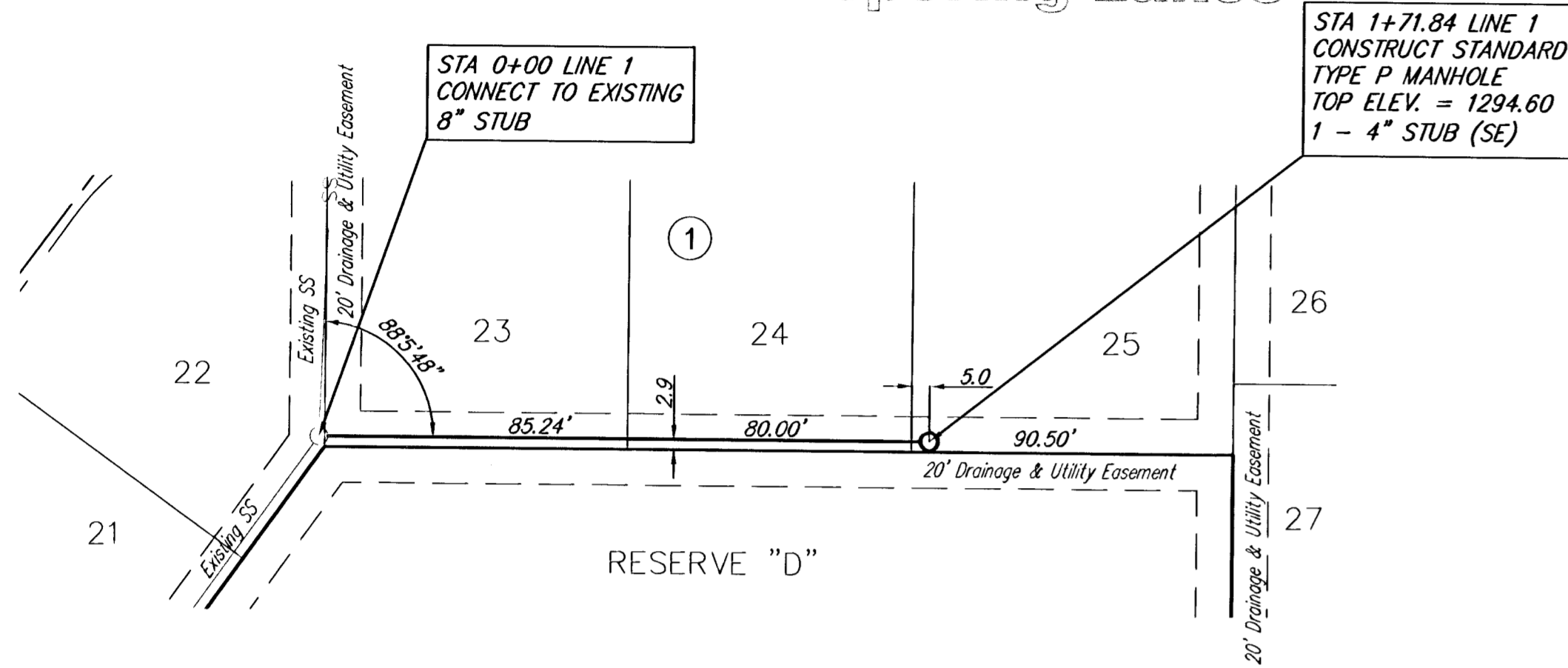


SCALE: Plan 1" = 40'
 Profile 1" = 40' Horiz.
 1" = 5' Vert.
 IRON = •

Whispering Lakes



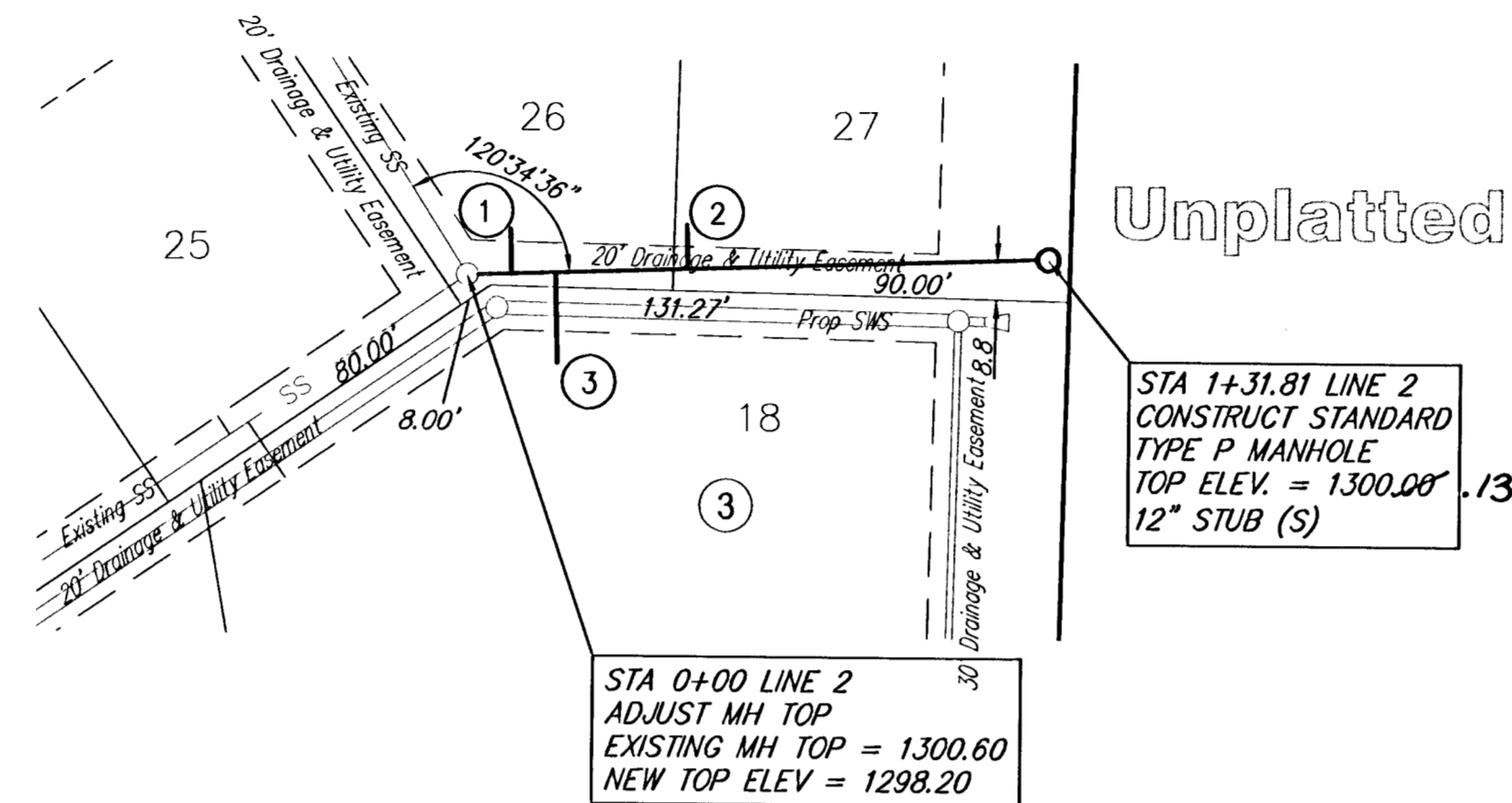
NUMBER	TYPE	LOCATION				FOR INFORMATION ONLY	
		LOT NO.	BLOCK NO.	LINE NO.	STATION/DIRECTION	APPROXIMATE LENGTH 4" PIPE VERTICAL	HORIZONTAL
1	12" X 4" Tee Saddle	26	3	2	0+10/E	10'	18' 11"
2	12" X 4" Tee Saddle	27	3	2	0+50/E	10'	10'
3	12" X 4" Tee Saddle	18	3	2	0+20/ZW	28' 10'	18' 18"

NOTE: Vertical Riser Pipe shall be extended to 2' minimum above ground water elevation and 4' maximum below proposed ground elevation.



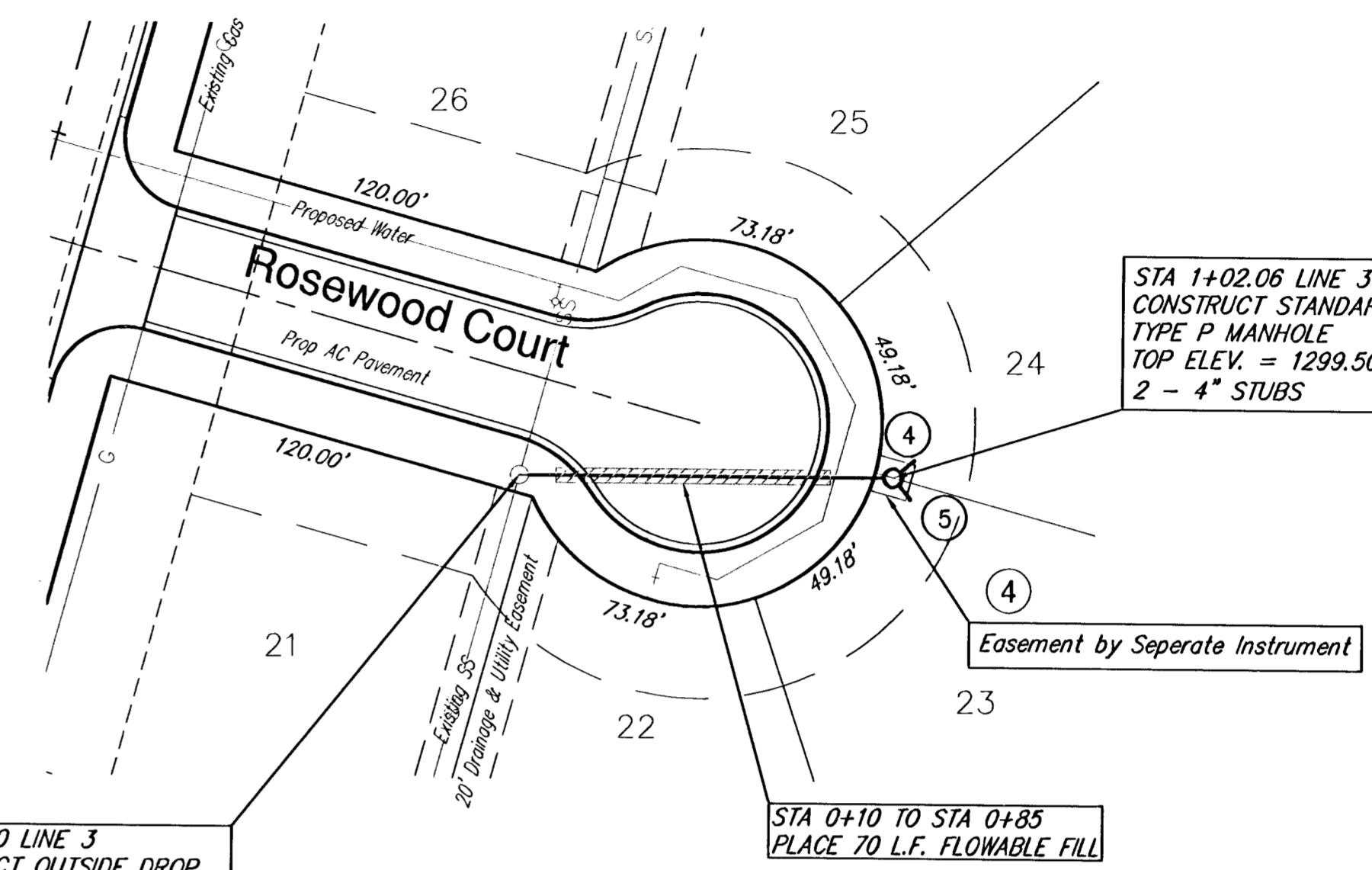
SCALE: Plan 1" = 40'
 Profile 1" = 40' Horiz.
 1" = 5' Vert.
 IRON = •

Whispering Lakes

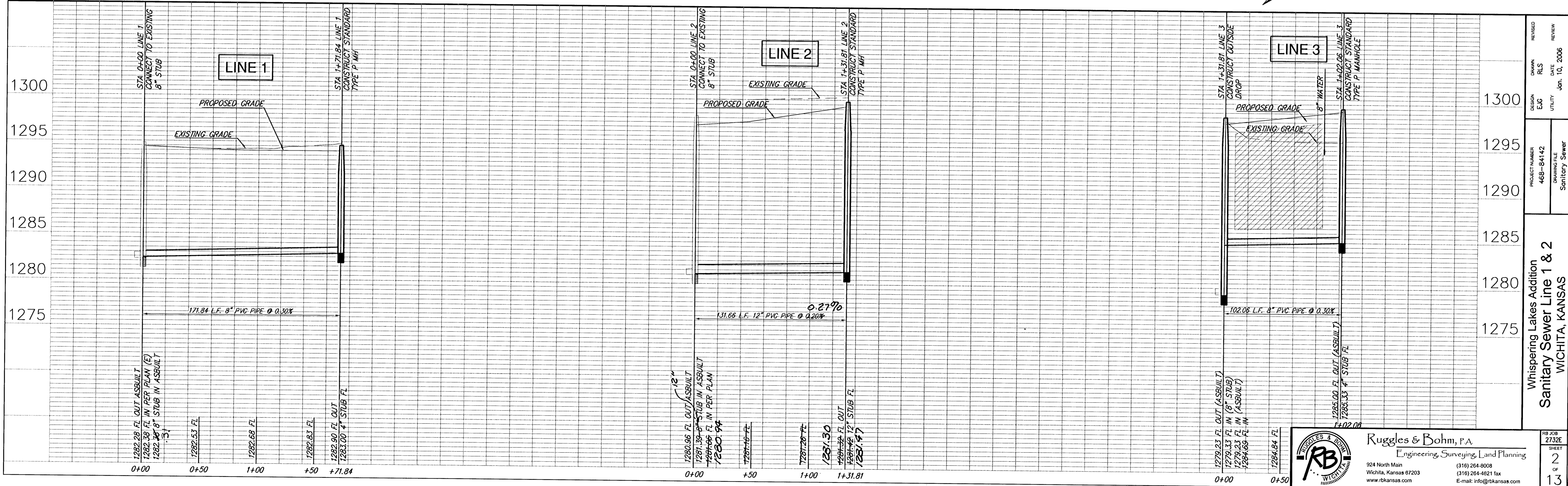


NUMBER	TYPE	LOCATION				FOR INFORMATION ONLY	
		LOT NO.	BLOCK NO.	LINE NO.	STATION/DIRECTION	APPROXIMATE LENGTH 4" PIPE VERTICAL	HORIZONTAL
4	4" Stub w/Riser	24	4	3	1+02.06/SE	10'	5'
5	4" Stub w/Riser	23	4	3	1+02.06/SW	10'	5'

NOTE: Vertical Riser Pipe shall be extended to 2' minimum above ground water elevation and 4' maximum below proposed ground elevation.



SCALE: Plan 1" = 40'
 Profile 1" = 40' Horiz.
 1" = 5' Vert.
 IRON = •



DESIGN	EJC	PROJECT NUMBER	468-84142	DRAWING FILE	Sanitary Sewer
REVISION	DATE	REVIEW	DATE	REVIEW	DATE
	Jan. 10, 2006				

Whispering Lakes Addition
 Sanitary Sewer Line 1 & 2
 WICHITA, KANSAS

Ruggles & Bohm, P.A.
 Engineering, Surveying, Land Planning

924 North Main
 Wichita, Kansas 67203
 www.rbkansas.com

(316) 264-8008
 (316) 264-4621 fax
 E-mail: info@rbkansas.com

RB JOB 2732E
 SHEET 2 OF 13