

GENERAL NOTES:

1. The Contractor shall comply with all applicable safety regulations. All construction shall be completed following current City Standard Specifications and Special Provisions.

2. Contractor will be required to provide notice to utility companies a minimum of seventy-two (72) hours prior to any excavation, as follows:

Kansas One-Call 687-2470

The Contractor must notify the following in case of an emergency:

- AT&T 1-800-246-8464
- Black Hills Energy 1-800-694-8989
- City of Wichita Water & Sewer 1-316-219-8921
- City of Wichita Stormwater 1-316-268-4090
- City of Wichita Traffic 1-316-268-4034
- Cox Communications 1-888-249-3530
- Kansas Gas Service 1-888-482-4950
- Energy 1-800-544-4857

3. Utility service lines, poles, etc. are to be adjusted as necessary by others prior to construction unless the plans specifically call for their adjustment by the Contractor or unless the plans specifically identify a utility to be adjusted by its owner during construction. Existing utilities and their location, as shown on the plans, represent the best information obtainable for design. The Contractor will be required to work around existing utilities within the right-of-way which do not conflict with proposed construction.

4. Rubble from the removal of miscellaneous structures and excess excavation which is to be wasted shall be disposed of on sites to be provided by the Contractor. These sites shall be approved by the Engineer as to suitability, appearance and site location. Locations, in the opinion of the Engineer, that will leave an unsightly appearance will not be approved. All disposal sites must be approved by the Kansas Department of Health and Environment. Material either stockpiled or disposed of in a flood plain will require a Kansas State Board of Agriculture permit. Any material dumped in waters of the United States or wetlands is subject to U.S. Corps of Engineers permitting regulations. Any material buried or stockpiled beyond approved construction limits will require additional archaeological investigations unless buried in a previously approved borrow location.

5. Trees and shrubs in public right-of-way which are in direct conflict with proposed new construction shall be removed by the Contractor with the City Engineer's approval. Trees and shrubs which are not in direct conflict with proposed new construction shall be saved and protected from damage.

6. The Contractor shall give all property owners and/or tenants of developed property abutting the construction of this project a minimum of ten (10) days notice prior to start of construction.

7. The Contractor shall be responsible for preserving property irons. The Contractor will be required to re-establish any property irons which are damaged or destroyed by his construction operations. Such irons shall be re-established by a licensed land surveyor in accordance with state laws.

8. The Engineering Division shall field locate water valves one time during construction when requested by the Contractor. It shall be the Contractor's responsibility to preserve such field locations during the construction process. Water valves, valve boxes or fire hydrants damaged during construction shall be repaired by Contractor at his own expense. Valve boxes and water meters within the project limits shall be adjusted to match final grades by the contractor.

9. All elevations shown are NAVD 88.

10. All areas disturbed during construction that will not be under proposed pavement shall be restored to match existing conditions.

11. All existing pavement and curb and gutter within the construction limits shall be saw cut, full depth, to the lines shown on the plans, or to the nearest joint, and removed, unless otherwise noted. If removal limits are within three feet of a joint, remove to the joint.

12. If traffic will be impacted by construction, a traffic control plan must be submitted and approved by the City Traffic Engineer, Mike Armour at traffic@wichita.gov before construction can begin. The Contractor shall be responsible for all traffic control measures to facilitate construction. All construction zone markings and signage shall conform to the latest version of the Manual on Uniform Traffic Control Devices (MUTCD) as published by the US Dept. of Transportation, Federal Highway Administration. All costs associated with construction markings and signage shall be the Contractor's responsibility.

All traffic control devices in the work zone (including markings and signs) and their installation and maintenance shall comply with the latest edition of the Manual on Uniform Traffic Control Devices (MUTCD). All traffic control devices in the traveled way or clear zone shall be crashworthy (NCHRP Report 350 or MASH compliant). http://safety.fhwa.dot.gov/roadway_dept/policy_guide/road_hardware/wzd

13. All construction equipment, including vehicles, materials, and debris, shall be stored outside of the clear zone. Where this cannot be achieved the contractor shall place appropriate signs, object identifiers, and/or barricades in compliance with the MUTCD.

14. Except when required for safety, traffic control shall not block any lanes or sidewalks when work is not being performed.

15. Traffic lane blockages more than four hours may need permitted. Call 316-268-4501 to determine requirements and request permit.

16. The AT&T and Gas lines in conflict are to be relocated by others and paid for by the Contractor via lump sum bid items "KGS Utility Relocation" and "AT&T Utility Relocation", respectively. KGS will require 30 days to proceed with relocation work, once payment of \$10,000 is received. AT&T's relocation will be performed by Diamond Engineering, who will require 3 days to proceed with relocation work and payment of \$1,343.75. Contractor is responsible for coordination with KGS and Diamond Engineering during relocation process. Contact information is:

Kansas Gas Service: Adam Knolla (316) 832-3123
Diamond Engineering (AT&T): Chad Hinton (316) 943-3651

Project Length:
Goebel Street = 852 LF
Hoyt Street = 652 LF

Stormwater Certification:

New Development or Redevelopment (Circle One)

Stormwater Permit # _____

NOI Permit # KSR114290 / S-WA20-0130

These construction plans were prepared in accordance with the current Stormwater management Regulations as set forth in the City of Wichita's Stormwater Management Ordinance 16.32 and the policies/guidelines presented in the Wichita/Sedgwick County Stormwater Manual.

Site Area (Acres) = 5.63

Disturbed Area (Acres) = 5.63

Water Quality Treatment: COW Off-Site BMP Program

Downstream Channel Protection: N/A

Detention: Existing Detention Pond - Proposed Expansion

The BMP used for this development is COW Off-Site BMP Program

PAVING IMPROVEMENTS WITH STORM WATER SEWER TO SERVE BUENA VISTA ADDITION

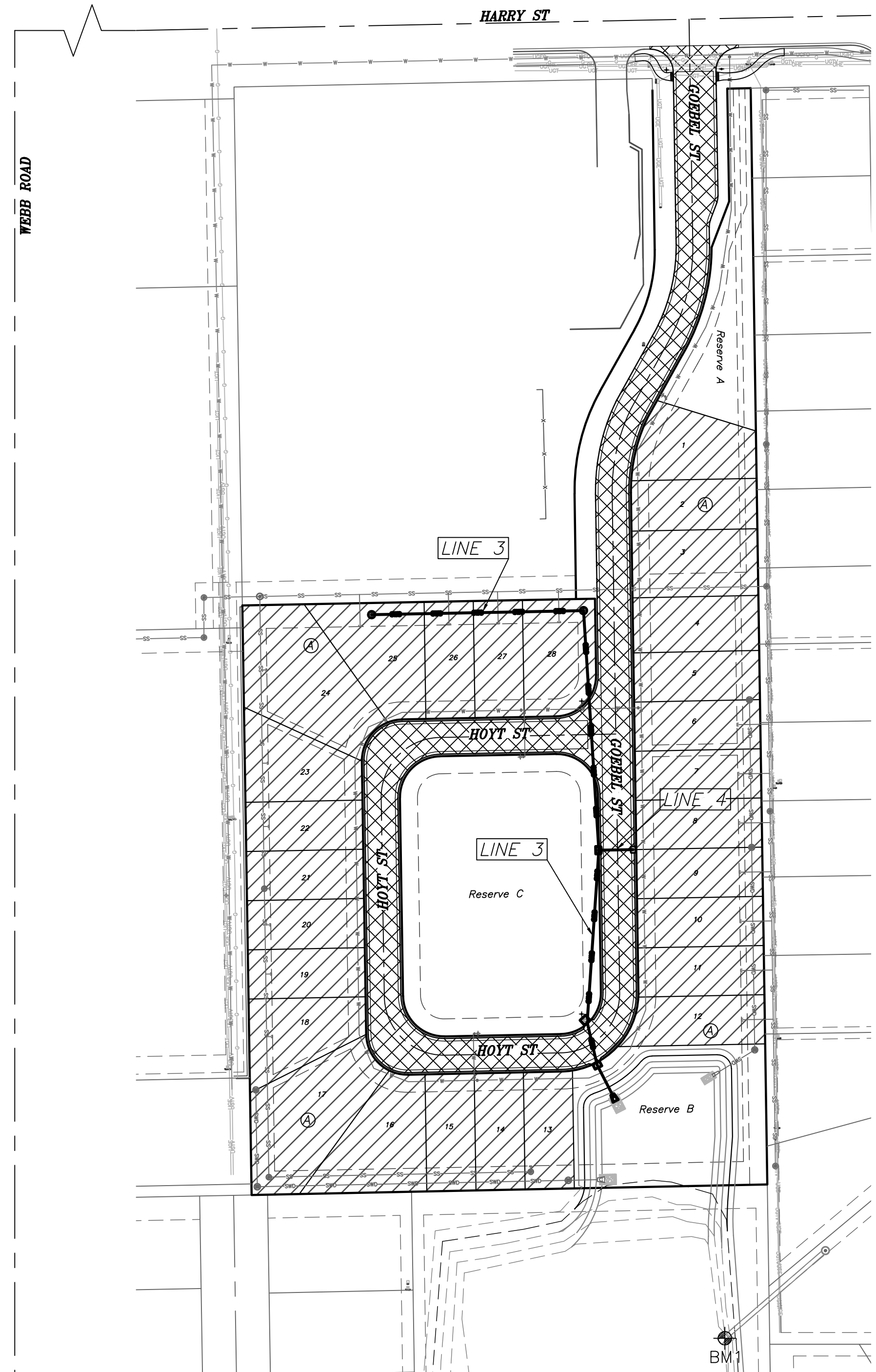
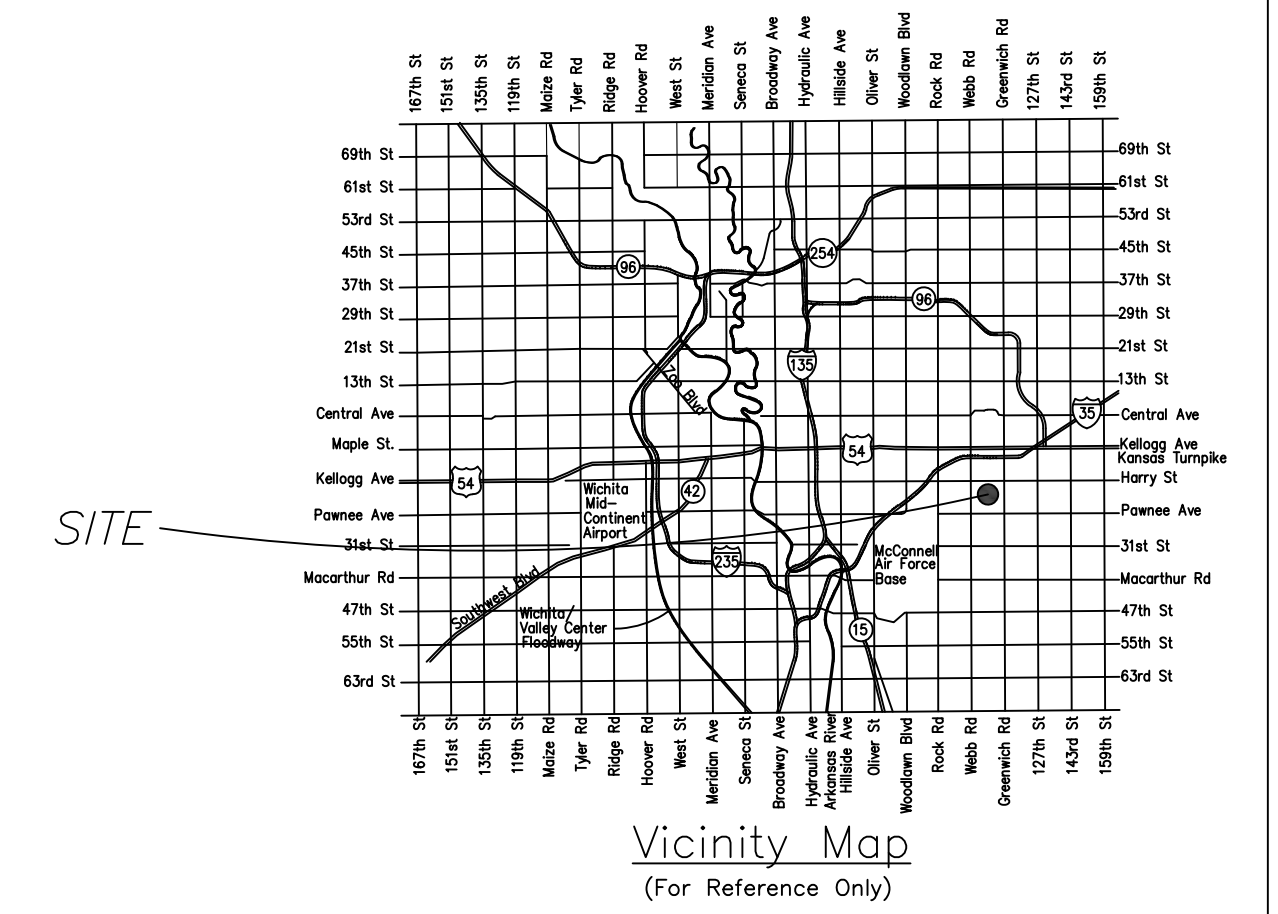
CITY OF WICHITA, KANSAS

Paul Gunzelman, P.E., Interim City Engineer

Project Number: 472-2021-085749

Org Code: 47469121

Munis Number: E1115



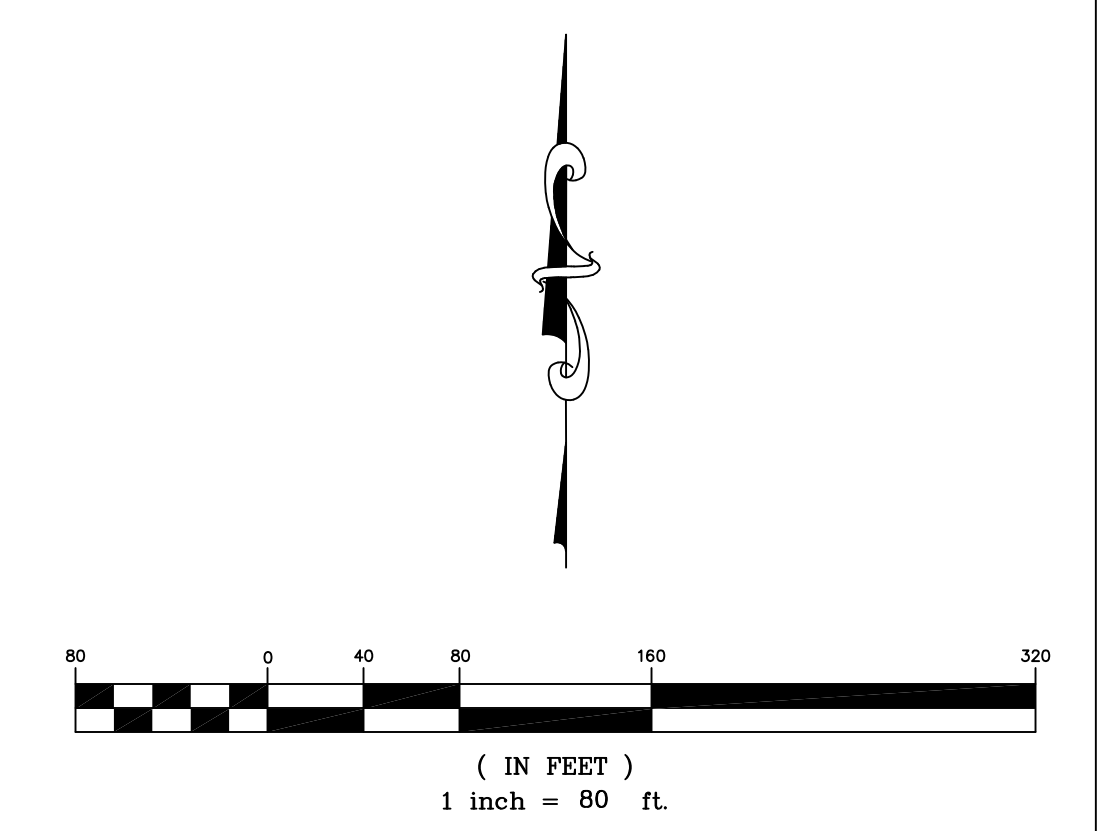
INDEX OF SHEETS:

- 1.0 Cover Sheet
- 2.0 Control Map
- 3.0-3.1 SWS Plan & Profiles
- 4.0-4.3 Paving Plans
- 5.0 Striping Plan
- 6.0-6.2 Cross Sections
- 7.0-7.3 SWS Detail Sheets
- 8.0 Typical Section
- 8.1-8.5 Paving Detail Sheets
- 9.0 Erosion Control Plan
- 9.1-9.5 Erosion Control Details
- 10.0 Lot Grading Plan
- 11.0 Plat

- Proposed Pavement
- Benefit Area

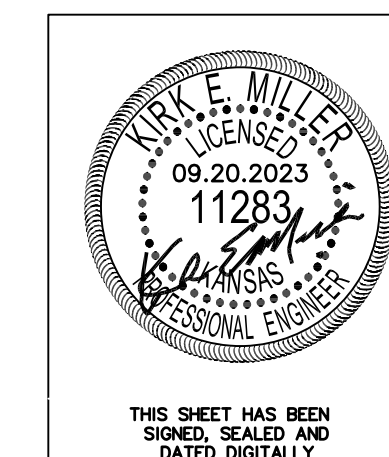
BENCHMARKS:

- BM1: Chiseled "□" on RCP end section, Approx. 131' south and 38' west of the SE corner of Buena Vista Addition
Elevation = 1358.62 (NAVD 88)
- BM2: C.O.W. Disc at the NW corner of Harry and Webb, Approx. 66' NW of the Section Corner
Elevation = 1359.60 (NAVD 88).



Developer:
Miller Family Homes
1907 S Hydraulic Ave,
Wichita, KS 67211
(316) 250.6227

SEPTEMBER 2023



KEMILLER
ENGINEERING PA
117 E. Lewis, Wichita, KS 67202 (316)264-0242